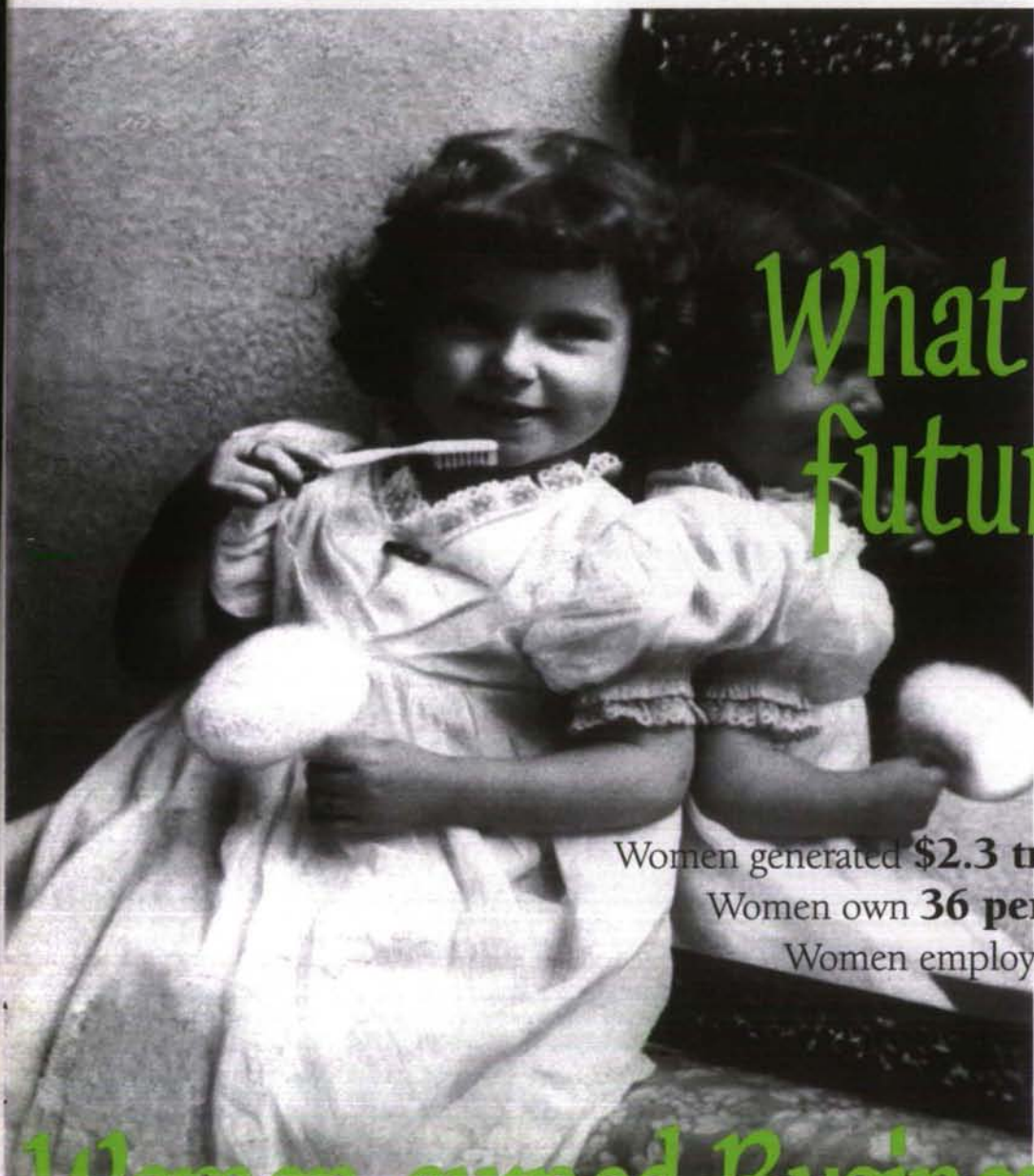


The **Arrow**
of Pi Beta Phi Summer • 1997



What does her
future hold?

Women generated **\$2.3 trillion** in revenues last year.

Women own **36 percent** of all U.S. companies.

Women employ **26 percent** of all workers.

Women-owned Businesses Work

Perspective



Lifelong commitment—

what does that mean in our lives as Pi Phis? Prior to initiation we sign a statement to “promise to accept the responsibilities of lifelong membership in the Fraternity.” That can mean various things to each of us. At some periods in our lives we have more time and more resources to commit to Pi Phi.

However, no matter how little or how much we have to give, it is in the giving that both Pi Phi as an organization and we as individuals benefit.

Our collegiate experience is important as it provides a support system that can permit us to satisfy our potential. It teaches us responsibility, gives us opportunities for leadership roles and service to others, and enables us to

succeed academically. It offers us what other campus organizations cannot—sisterhood.

Alumnae membership provides a greater dimension to our lives. With the world becoming increasingly complex, it is often easy to forget those things we hold closest to our hearts. In the day-to-day world of work, family and other commitments sometimes we lose touch with special friends. As we reflect on friendships formed during our college years, it is those friendships that lead us into further service. One of our entrepreneurs in this issue of *The ARROW* gives Pi Phi credit for “everything from moral support to staffing,” in her entrepreneurial undertakings.

At the 1938 Convention, Founder Libbie Brook Gaddis shared her thoughts with the convention body. “Since 1867 very many have worn and are wearing our golden arrow. It is because of the loyalty of all Pi Phis and the grand way in which they have carried on, that our Fraternity is great and strong today. In keeping with our aim I like to think that each one gives out something of gladness, of friendship, and of service.”

I like to think that membership in Pi Beta Phi has brought us special friendships, joy to our lives, and the desire to serve not only Pi Phi but our communities and those around us.

—GRAND PRESIDENT
BETH VAN MAANEN BEATTY

Volume 113 • Number 4

Contents

Features

- 4** Pi Phi Entrepreneurs are making waves in the business world.

- 40** Alumnae honored for fraternity service as province winners for two international awards are announced.

- 50** Four alumnae are recognized as Carolyn Helman Lichtenberg Crest Award winners.

- 56** Pi Beta Phi announces the launching of an official fraternity web site.

- 60** Graduate Consultants hired for the coming academic year.



3

Departments

- From the Editor14
- From the Reader15
- News from Arrowmont16
- Foundation18
- Academic Excellence26
- Links to Literacy28
- Collegiate News30
- Rush Information Form35
- Directions36
- Fraternity Directory38
- Alumnae News43
- In Memoriam52
- Fraternity News & Notes57
- Pi Phi Express63





Women-owned Businesses Work

Women own 36 percent of all United States companies. They employ 26 percent of all workers. Last year they generated 2.3 trillion dollars in revenues. And they are the fastest growing sector of the business economy. From chocolates to fine jewelry these Pi Phi entrepreneurs are reaping the accolades they deserve in the business world.

A Dressing Ahead of its Thyme



Louisiana Beta Diane Williams Carney, president and co-founder of Gens du Monde, LLC, has realized her dream by marketing a family favorite.

Heirloom dressing dates back three generations to Diane's grandmother, Ada LeBlanc, known affectionately as "Mamma Do." The recipe ahead of its "thyme" is prepared with no preservatives and is a healthy and natural enhancement to salad, pasta and rice, as a marinade for poultry, meat and seafood or as a dipping sauce for bread.

It may have been Diane who was ahead of her time, when as a 14-year-old she came up with the idea to market and sell her grandma's dressing recipe.

According to Diane, it was a 14-year-old boy's reaction which reaffirmed her belief that there was something special about her grandmother's dressing. "Not being old enough to date, I was allowed to have boys for dinner," she says. "After finishing his salad, he politely asked if I would mind if he drank the remaining dressing in the bottom of the bowl," says Diane. From her six-year-old nephews to staunch executives from a major corporation, everyone who tasted the dressing loved it, she says. The product was test-marketed in 1996 and received positive results from area consumers.

In February, Saks Fifth Avenue received its first shipment of Heirloom dressing. The retailer is adding a new salad to its New York Café SFA menu. Heirloom is also being taste-tested in Japan for possible inclusion in a trade catalogue there.

"The dressing is just one of the many heirlooms my grandmother left to me, along with her strong sense of faith, strength and character of heart. Her affection and love for the family

was demonstrated by her labors every Sunday for the weekly family lunch gathering."

Gens du Monde, LLC, is currently working on developing other products based on antiques and heirlooms.



• For more information call: (504) 768-9758.



A Sweet Career

Washington Alpha Fran Watson Bigelow, a one-time accountant, has made a sweet career for herself as the developer of a tasty line of chocolates.

After deciding a career as an accountant wasn't for her, Fran learned how to make desserts at the California Culinary Academy in San Francisco. When Fran founded Fran's Chocolates in 1982, it was a two-employee operation in a quaint Seattle storefront. In the beginning, Fran concentrated on delivering her line of rich specialty cakes to restaurants. As her business evolved, Fran continued to create new products with endless experimentation.

"It just caught on," she says. "I never envisioned I'd be doing a line of chocolates." In its first six months Fran's Chocolates did \$60,000 in sales.

Fran was recently named best chocolatier in America by "The Book of Chocolate" for her signature GoldBar. Made with soft buttery

caramel and almonds (or macadamia nuts) and coated with dark Callebaut Belgian chocolate, these sensations have been dubbed the "adult candy bar."

In November 1996, Fran unveiled her second store, a lush European-style chocolate salon. Fran's will offer in-store dining, mail order services, and custom chocolate creations.

Fran credits Pi Phi as being a constant contact and support network. "Early in the growth of the business it was a good way to let a larger population in Seattle know what we were doing," she says. "Washington Alphas also have served as a good source of part-time employees for my retail store."

The rapid growth of business and growing popularity of the sweets has not caused any changes in their preparation. "We don't do shortcuts," Fran says. "We make truffles the same way as when we started. We just make more of them."

And make more of them, they have—sales topped \$1 million in fiscal 1994, increased 18 percent to \$1.3 million in 1995, and then leapt to nearly \$2 million in projected annual sales through June 1996, a 53-percent increase over the previous year.



Fran's delectable truffles and other creations are available at Fran's Chocolates' retail outlet stores, or call for a mail

order catalog at 800/422-FRAN.

Stay-at-Home Mom Has Hit the Road!

Iowa Gamma DeElda Erbe Wittmack has turned a longtime favorite hobby into a successful national needlepoint design business. Her hand-painted line, "DeElda" began 27 years ago as she designed for friends and shop owners as a stay-at-home-mom.

In June of 1994, she began the national trade show circuit. DeElda got off to a bumpy start as she sat with an empty booth after UPS failed to deliver her canvas shipment.

Since that time, business has been booming as her wild and crazy, colorful "folk art" designs have taken off. The challenges to start and run her own business have been many, according to DeElda. "Twenty-seven years ago the business was lucky to turn out two hand-painted canvases a week," she says. "Now DeElda employs three full-time copy painters and two finishers, has brochures printed and distributed by the thousands and tries to ship at least five wholesale orders a week while keeping up with local custom design orders and the bookwork."

DeElda designs may be personalized. Canvases are available with or without yarn. Custom orders are welcome, and complete stitching and finishing services are available.



DeElda's tree-top angel, one of the best-selling canvases, has recently come out as a kit.

• For more information about this canvas or other DeElda designs call: (888) DeElda-1.



In 1989, Texas Alpha Gay Warren Gaddis purchased a portion of her existing client base from Fellers & Gaddis and opened Warren/Martino, an advertising, marketing and public relations firm. The name changed to T3 in August 1994 to accurately reflect the company's philosophy—The Think Tank.

Gay started Warren/Martino with three employees. Her primary clients were healthcare clients. Last years capitalized billings were \$16.2 million. The company has 35 full-time employees and six-eight interns each semester. Last year, the Austin Business Journal named T3 one of 25 fastest growing companies in Austin. Women's Enterprise named T3 one of the top 20 largest woman-owned businesses in Texas.

Pi Phi Establish Antique Markets

Without a tax number, a business name, a bank account or a single piece of merchandise, Texas Delta Judy Hitchcock Miller opened a business with a friend, Ella Banks. What began as an 8 by 10 foot space more than 10 years ago, has grown into two thriving antique markets in Dallas.

When another Pi Phi alumna, Oklahoma Beta Linda Richardson Holsinger, leased a space across from them a few months later, a friendship formed that would ultimately lead to a professional partnership. In 1989, McKinney Avenue Market was up for sale. The trio purchased the building, where they had once been tenants, and changed the name to McKinney Avenue Antique Market.

"Our space had grown to an 8,000

"T3's formula for success is based on creating strategically focused marketing solutions, based on innovative thinking, executed by one of the top creative teams in the Southwest," says Gay. This year, T3 swept the local American Advertising Awards receiving 21 awards.

In 1995, a program at T3 for working parents with new babies was created.



"T3 and Under" allows new parents to bring their babies to work with them until they are ready for

day care. This program earned Gay national recognition and was featured on NBC's "The Today Show" and in *Working Mother Magazine*.

T3 is located in a three-story historic mansion in the center of Austin.

• For more information call: (512) 499-8811.

square foot, two-story operation—we were shopkeepers," says Judy. "Ella, Linda and I rented every available space to other dealers including the back stairwell and the walls in the ladies restroom."

In 1992, Judy, Linda and Ella decided to expand and purchased three small, connected buildings. They remodeled to form one building. Lovers Lane Antique Market was opened in the Park Cities with 4,700 square feet of space. Today, there are more than 70 dealers represented in the two markets. Their travels in the United States and Europe supply an ever-changing selection of American, English and French antiques and primitives.

"Attractive display and a knowledgeable staff make shopping at both of our markets pleasurable," says Judy.

• For more information call: (214) 871-1904.



Embellishments Distinctive Pillows

A turn-of-the-century Irish crocheted baby collar was turned into a tooth fairy pillow. Silk panne velvet drapes became elaborate pillows. And a bridal train and beaded bodice were reborn as pillow shams. All of this is

possible through the needlework of Texas Delta Carol Griffith Phillips.

According to Carol, her change in career followed a pledge class reunion. At that time, Carol's sister had been diagnosed with terminal cancer, and her travel schedule as regional marketing director for Aramis was extensive. "I didn't have enough time for my family, and when I talked of making a big life change, these friends lent me their support and encouragement," Carol says.

The next year Carol retired from the fragrance business and began the pillow business using vintage fabrics. "At first I did all the sewing. Three years later, my staff of three and eight

contractors make more than 200 items each year," she says.

"Many items are for individual clients from textiles that are important to them," Carol says. "We've made pillow shams from doilies and doll dresses. I love what I am doing. I see tremendous room for growth—both personally and business-wise."

• For more information call:
(713) 465-5893.

A Forerunner of Pi Phi's Consultant Program

Oklahoma Beta Joye Dickens was one of the forerunners of today's Graduate Consultant Program. Before her senior year Pi Beta Phi's then President of Grand Council, Alice Weber Johnson offered Joye a full year's scholarship to attend Syracuse University and live in the Pi Phi house on campus. Joye was one of the first young women Pi Phi sponsored as a consultant for a chapter.

Since her days as a chapter consultant she has continued her firsts as the co-founder of the Counseling Center of Greater Hartford in West Hartford, Connecticut. From the founding of the center to the present time, she has maintained a successful private practice for individuals as well as through classes of various sizes.

"I have owned my business for 17 years and have been with A Child Among Us—The Center for Adoption, Inc. as the Chairman of the Board of Directors and Member of the Corporation since it's founding three years ago," says Joye. "Our theme and focus for my 1957 pledge class was 'The Pursuit of Excellence.' I took this direction to heart and found unending support from my Pi Phi sisters at Oklahoma Beta in any project I undertook. I continue to draw on these early formative experiences in my life today," she says.

Fall Creek Vineyards



Fall Creek Vineyards was established in 1975 by Texas Alpha Susan Teeple Auler along with her husband, Ed. Their winery sits on the shore of Lake Buchanan in one of the most picturesque tourist regions in Texas.

The inspiration for the winery came in 1973 when the Aulers, on a cattle buying trip to France noted the remarkable similarity between the soil, terrain and the microclimate of parts of the French wine country and their own ranch. "I became convinced that certain parts of the Texas Hill Country would be ideally suited to grape growing," says Ed. In 1979, with a few grapes from their first plantings and a borrowed wine press, the couple made their first commercial wine in a renovated garage. "It wasn't exactly world-class wine," says Susan, "But from that moment on, our vision took shape."

Today, Fall Creek is a living testament to the Auler's early vision. Currently, the Fall Creek Chenin Blanc is the most popular wine, leading the pack, with production of about 3,000 cases per year. As the most recent vineyard plantings mature, however, the Aulers will have the greatest production of Chardonnay, Sauvignon Blanc, and Cabernet Sauvignon. According to the Aulers, they see their future in these varietals.

Fall Creek Vineyards has undergone several expansions since 1986, and a visitors/tasting center was completed in June 1990. Future plans at Fall Creek call for more cellar space.

Designed by an architect in accordance with Susan's specifications, the 15,000 square foot winery is a combination of the new and the old. The fermentation room holds the most modern of winemaking equipment. The oak casks reside in a room secured by antique stable doors from the Louis Pasteur Laboratory outside of Paris. The upstairs portions of the winery are the guest quarters which combine early Texas and antique country French and English furnishings.

• For more information call:
(512) 476-4477.

Astra Communications



Missouri Alpha Lynn Gardner Hinkle started Astra Communications, a marketing and public relations firm which specializes in Internet Web Site design in Topeka, Kansas.

Before starting Astra, Lynn owned an advertising and public relations firm for ten years. She has a Bachelor's of Journalism degree from the University of Missouri.

Astra Communications, housed in a high-tech office in the lower level

of Lynn's house, employs a writer, graphic designer, webmaster and executive assistant. Lynn also began a nonprofit organization, Women of the World, a 501c-3 organization which encourages female leadership internationally. "The Women of the World organization was developed after a cultural exchange with Russia and my community," says Lynn. "My underlying mission was to help women get involved in the political arena."

To link Astra Communications and The Women of the World Organization, an Internet site with a Cyber Catalog of products made by women from around the world was developed. The *Seven Sisters* catalog is operated by Astra, and offers unique and beautiful apparel, artwork, jewelry, ornaments, and a variety of collectible crafts. A portion of every sale is donated to help Women of the World with its worldwide efforts. *Seven Sisters* was one of the first catalogs on the web.

If all this activity isn't enough, the Hinkles have donated their home to the Every Woman's Resource Center to be used for its major fund-raiser. The event, known as the Designer Showhouse, raises more than \$100,000 to support its resource and referral services in the Topeka community.

The Hinkles, their four sons, pets and Astra Communications will live in a rented house for the duration of the fund-raiser. "A friend recently asked me, 'How do you get yourself into such adventures?' I guess I don't know better." According to Lynn, out of chaos comes creativity. "We are definitely operating in a creative atmosphere."

To learn more about Astra Communications and The Women of the World Organization check out their website at www.astra.com, call (913) 862-6000 or e-mail wownow@databank.com.

Their Happiness Captures My Heart

"No one will watch your money as you will."—That is why Ohio Beta Linda McReynolds Bryant started Financial Focus for entrepreneurs, and moneywise individuals. Her clients learn how their money works for them. They gain confidence and new ideas, says Linda.

"Whether I am writing an acquisition package for someone to buy a business, or working with retirees on how to preserve their money and maximize their income, my goal is for them to be interested, involved and informed about their money," says Linda.

So, how do you feel about letting your money work for you while you work for your money? Linda says that since an average person spends 10 hours a day, or more, earning it, they should consider spending some time caring for it, spending it wisely, investing it and joyfully watching it grow.

Linda's entrepreneurial business clients are people who invented their product or who are great at marketing the product. "None were great financial people when they started their business," she says. "It's not how much money you make that counts, it's how much you keep."

According to Linda, If you can't spend the time, don't spend the money. "Make time for your money, for just one year, and see how you feel as you learn with a good advisor," she says.

"My greatest reward has been the past four years, serving as volunteer Vice President of Finance of the St. Louis Alumnae Club's needlepoint and gift store, Sign of the Arrow. The shop generates approximately \$200,000 in profits for local charities and I have fun with my Pi Phi sisters while we earn it."

• For more information call: (314) FOR-1999 and beyond.

Lesesne Financial Solutions



Tennessee Delta Kathie Teas Lesesne is founder and President of Lesesne Financial Solutions, P.C., providing financial and tax advice for clients going through divorce.

She started Lesesne Financial Solutions in 1995 after months of networking on how to help and educate women in need of basic financial advice and tax planning. She identified the need to supplement divorce attorneys' work with financial expertise. "Lawyers know the law, but it's not their job to

build the client's financial future after divorce," said Kathie. "Many times the wife is not aware that she can have a financial future."

The divorce process requires proper planning and an analysis of the marital assets and liabilities. Kathie gives personal attention to her clients that ranges from researcher, to accountant, to encourager, and educator. As a recent client explained, "She stands in the gap between the attorney and client."

Divorce has huge financial consequences and armed with all the information, the attorney has the tools to

develop an equitable settlement, says Kathie. Some of the services she provides include identifying future expenses, providing information about medical and life insurance issues, identifying tax consequences of the assets and liabilities in the divorce settlement and preparing budgets.

Kathie began her accounting career with KPMG Peat Marwick in Atlanta in 1978 and has been a CPA since 1981. She attended the University of Memphis where she graduated Cum Laude with a BBA in Accounting.

• For more information call:
(404) 257-1560.



Audie Rapp with
twin sister
California Zeta
Shirley Keough
Richardson.

Dynamic Duo

California Zeta Shirley Keough Richardson started her business to aid others. "I may not be an entrepreneur extraordinaire," she says. "But, what I do provides scholarships for high school seniors who are pursuing higher education."

According to Shirley, after her husband's sudden death she found herself having a rough time getting her life back in order. "I couldn't concentrate or do anything. I knew I had to get going again," she says.

The entrepreneurial idea was spurred by her three grown children who wanted to establish a memorial scholarship in their father's name at the local high school. A way to fund the scholarships needed to be developed—"We decided the funding could come from the sales of my art work—a hobby of mine that had been shelved since my husband's death."

Shirley began creating pen and ink sketches of local scenes to be printed in calendars and note cards.

With the money she has made from sales, Shirley has awarded two scholarships each year for the past six years. One scholarship is awarded to a student pursuing a four-year program to become a teacher. The second scholarship is awarded to a student planning to attend a vocational school. "My husband was a Vocational Education teacher and administrator," says Shirley.

Her calendar and note card sales have grown due to the efforts of her twin sister Audie Raap, who lives in Friday Harbor, Washington. "Audie talked me into doing a calendar of the San Juan Islands of Washington—She is a super salesperson, and I can't keep up with her orders," says Shirley.

Southern Hospitality in a Victorian Setting

Georgia Alpha Betty Webb Krauss, along with her husband George, have owned and operated Goodbread Bed & Breakfast for the past five years. Their bed & breakfast is located in St.

Marys, Georgia, a small yet fast-growing Georgia seacoast town, 40 miles north of Jacksonville. St. Marys offers a mix of natural beauty and lovingly preserved historic build-

ings. The town was recently recognized by *Money* magazine as a "Great Town with Great Jobs." St. Marys was one of the towns spotlighted in the recent *Money* magazine survey "Fifty inviting places where residents can earn big city-bucks in small-town comfort."

"I had been teaching all my life and was ready to do something different when I found the house and fell in love with it," Betty says. "It has definitely been a challenge, but it is fun and we enjoy it."

Betty and George live at their bed & breakfast and serve as gracious

hosts for their visitors. The Goodbread Bed & Breakfast, built circa 1870, has been lovingly restored to its previous charm, complete with its original wide pine floors, high ceilings, paddle fans, spacious rooms, private baths, air conditioning and seven fireplaces.

Guests may stroll in the quaint historic district of St. Marys, meander in the shops and down the shady walkways, eat in the delightful and friendly restaurants or walk along the river.

A recent celebrity wedding on nearby Cumberland Island brought much hustle and bustle to the otherwise quiet town, according to Betty. "John F. Kennedy Jr. and Carolyn Bessettes' recent wedding attracted media from across the county to St. Marys. It was an exciting weekend," she said.

Kings Bay Submarine Base, Okefenokee Swamp Park, the Golden Isles and Amelia Island are also only a short distance from Goodbread Bed & Breakfast.

• For more information about
Goodbread Bed & Breakfast call:
(912) 882-7490.



Janie Emery

Over the past 20 years, Oklahoma Alpha Janie Reding Emery's love of portraiture has been an ever-consuming passion. She was a fine arts major in college and has studied with renowned portrait artists Joe Bowler and the late J. Anthony Wills. Janie is currently in a mentoring program with John Howard Sanden in New York City. She is a member of the Portrait Institute of New York City and has been awarded certification by the American Portrait Society.

"Obtaining a likeness is no great problem—creating a beautiful and timeless work of art, that is the challenge," says Janie.

Janie has been painting portraits since 1974. She has painted more than 250 commissioned works, including many prestigious portraits

which are in private, public and corporate collections. Among the portrait commissions she has completed are those of CEOs, doctors, professors, a PGA tour golfer and a state senator. She also paints many portraits of families and family members.

• For more information call:
(504) 767-5914.



Janie Emery, a Baton Rouge-based artist, unveiled her recently commissioned portrait of former U.S. Secretary of Defense Casper Weinberger. Agent Holly Emery, Casper Weinberger and Janie Emery.

Jack Doyle as Adams & Doyle. In 1955, he bought Jack out and it became M.F. Adams Company.

"Mississippi Belle came into existence in 1975," says Beejay. "Merlin set it up, put the Miller beer account into it and made Mark, our son, the president. I was secretary-treasurer and Merlin was vice president," she says.

Since that time Beejay has overcome obstacles to ensure the success of the business. "I had to teach myself how to do everything." But she triumphed over adversity. "I never felt disadvantaged in being a woman. I say rely on yourself."

California Carousel and Carousel Tours

Oklahoma Beta Norma Jo Markes Hemphill founded her company, California Carousel, 25 years ago, as a pioneer in a new field—Event Planning and Destination Management. When Jo founded the company, the idea was so cutting-edge that finding an insurance company to categorize it was difficult.

Today, there are more than 100 similar companies in San Francisco.

According to Jo, choosing the career path was a natural one for her as she had organized events for neighborhood children beginning at the age of nine. "My career path continued to grow as Social Chairman at Oklahoma State University and blossomed with the growth of my family and involvement in community activities." According to Jo, she has always delighted in turning "ordinary events into special occasions," a tenet she has carried through to her profession.

Since 1972 California Carousel has been creating, organizing and producing events to remember—from the adventurous to the elegantly demure. California Carousel offers; complete event packages, transportation, tours complete with bi-lingual guides, entertainment, music, set-up, speakers, graphics, printing and dining. The company offers professional services with a creative personal touch.

"Coordinating Pope John Paul II's visit to Northern California for the Oakland Diocese was my most memorable event," says Jo.

• For more information call:
(510) 284-2525.

Carter Noble Strategic Marketing

Responding to the need for a company that helps clients define their targets, develop a sound marketing strategy and create imaginative printed materials, New York Alpha Laurie Carter Noble formed Carter Noble Strategic Marketing, a full-service public relations agency.

She has developed corporate image definition and promotional strategies nationwide, with emphasis on the non-profit sector. "The materials we produce are tailored to our individual clients' requirements," Laurie says.

Her interest in market strategy has led her to develop a series of training seminars on how businesses and non-



Photo by Karen Hardy, Quincy, Illinois

Mississippi Belle

Since her early career days as a military writer for a Peoria paper, Illinois Theta Beejay Seabury Adams has not slowed down and has continued to achieve great successes in spite of obstacles. Beejay is vice president and treasurer of Mississippi Belle Distributing, a business she entered when her husband died. "When I first came into this business, a lot of people laughed," she said.

Beejay's husband, Merlin, began his own business and teamed up with

profit organizations can market themselves successfully and cost effectively.

Her special field of interest and expertise is economic empowerment in minority areas. "Our specialty is creating growth strategies for start-up companies," says Laurie. "We have a particular interest in helping women entrepreneurs achieve success."

• For more information call:
(617) 262-2662.

Soolip Paperie & Press

California Gamma Wanda Wen is co-owner of Soolip Paperie & Press along with her husband Grant Forsberg. Soolip Paperie & Press, a boutique specializing in a wide array of unique paper products, opened in June 1995. The store offers a collection of fine paper goods including greeting cards, stationery and invitations.

The store also features a custom letterpress printing department offering one-of-a-kind wedding invitations, announcements, business cards and stationery. Soolip Paperie & Press utilizes this 15th century printing technique in all of its custom work. Soolip Paperie & Press has also created a special environment of inspiration for those who want to design and create their own cards. Colored pencils, paper bits, dried flower petals and foreign stamps are available.

"Everyone has an artist inside," says Wanda. "It is my challenge to inspire and creatively enlighten those around me."

The store, located on Melrose Avenue in West Hollywood, has been featured in *Los Angeles Magazine's* "Best of LA," *Brides*, *W*, *WWD*, *Los Angeles Times Magazine*, *Where*, *Venice* and *Face* magazines.

• For more information call:
(310) 360-0545.

PowerBar



California Beta Jennifer Biddulph Maxwell was born in Ann Arbor, Michigan, grew up in Marin County, California and attended the University of California, Berkeley. Jennifer's interest in sports, nutrition and health led her to a bachelor's degree in nutrition and food science in 1988. She also ran track and cross country in college and competed in dozens of triathlons.

In early 1985 Jennifer met Brian Maxwell and joined the effort of creating a "sports energy food." After finding that standard food industry practices required all bar products be made with unhealthy, hard-to-digest saturated fats, they experimented with formulations in Brian's kitchen. Jennifer combined her knowledge as well as her love of cooking in the hundreds of batches that eventually evolved into the original Chocolate and Malt-Nut PowerBar® energy bars in late 1986. That same year, Powerfood Inc. was founded. In 1987, 50,000 PowerBar energy bars were manufactured and sold via mail order from Brian's basement. By 1988, Jennifer and Brian were married and the company began hiring employees. By late 1989, the compa-

ny opened its own manufacturing plant. A distribution facility in Charlotte, North Carolina, was added in 1992. The company began manufacturing PowerBar energy bars at a second plant in Boise, Idaho, and established PowerBar Foods Canada Inc. in 1994.

Jennifer has played a key role in the growth of Powerfood as a senior manger. She personally developed the Wild Berry, Apple-Cinnamon, Banana and Mocha PowerBar energy bars. In late 1994, Jennifer resigned her position as Research and Development Vice President to focus more on her role as owner and Powerfood Advisory Board member. Jennifer continues to be involved in developing ideas for new products.

The success of PowerBar Inc. has been demonstrable. In April 1996, PowerBar won the American Marketing Association's Edison Best New Product Award of 1995 in the nutrition/health category. That same year, the Maxwells were named one of the top 100 superstars of marketing in *Advertising Age* and *Sportstyle* magazines. Both have also been featured in *Business Week*, *Income Opportunities* and *Business Start-Ups* magazines. In annual awards competitions sponsored by Ernst & Young and *Inc.* magazine, the Maxwells were named the 1992 Entrepreneurs of the Year in the manufacturing category for the Northern California region. Powerfood Inc. was also ranked No. 22 on the *Inc.* 500 list of the fastest-growing privately held companies in America. Today, Powerfood Inc. employs more than 150 people and PowerBar energy bars are available throughout the United States, Canada and in 30 foreign markets.

For more information about PowerBar call: (800) 58-POWER.

From the Editor

entrepreneur

a person who organizes and manages an enterprise, especially a business, usually with considerable initiative and risk.

—Webster's Dictionary

Considerable initiative and risk have been demonstrated by Pi Phis throughout the years, transcending from our beginning to our present day. Our Founders possessed tremendous entrepreneurial spirit. In 1867 they began the business of Pi Beta Phi Fraternity, the first organization of college women founded as a national fraternity.

Continuing in the path of entrepreneurship are the women featured in this issue of The ARROW. Each of the entrepreneurs included demonstrates how she has succeeded in spite of the considerable risks involved in developing, managing and owning a business.

The Pi Phi entrepreneurs we have featured wrote to us sharing their stories in response to our request in the Winter ARROW, were found through Pi Phi's Directions program, or came to our attention through word of mouth.

Each of these women serves as an inspiration and role model for our members. They have taken imagination, initiative and risk and turned it into a successful business. Thank you for sharing your story.

In addition to our inspirational entrepreneurs, other outstanding women highlighted in this issue are scholarship winners, Evelyn Peters Kyle and Emma Harper Turner Award Winners, Carolyn Helman Lichtenberg Crest Award Winners, Traveling Graduate Consultants and 75-year members.

More than 130 years ago our Founders initiated a major undertaking in the development of a national fraternity for women. Today, Pi Phi officers continue the tradition of developing and maintaining the business by managing our collegiate chapters and alumnae clubs and developing new ones. Pictured below are collegiate and alumnae initiates of Ontario Gamma, our newly installed chapter at the University of Guelph.

—Libby Gilkison Cannon



**Editor—Elizabeth Gilkison
Cannon**

**Assistant Editor—Holly Nicole
Schaumberger**

Pi Beta Phi Central Office
7730 Carondelet, Suite 333
St. Louis, MO 63105
(314) 727-7338
FAX: (314) 727-8049

Address correspondence of an
editorial nature to the editor.

Copy Deadlines

Spring—Dec. 1 Fall—June 1
Summer—April 1 Winter—Oct. 1

Address Changes and In Memoriam

Pi Beta Phi Central Office
7730 Carondelet, Suite 333
St. Louis, MO 63105

The ARROW of Pi Beta Phi
(USPS 032-540) is published quar-
terly by Pi Beta Phi Fraternity,
7730 Carondelet, Suite 333,
St. Louis, MO 63105-3328.
Second class postage paid at
St. Louis, MO. POSTMASTER:
Send address changes to
The ARROW of Pi Beta Phi,
7730 Carondelet, Suite 333,
St. Louis, MO 63105-3328.

Pi Beta Phi Fraternity, ΠΒΦ Founded 1867

Emma Brownlee Kilgore
Margaret Campbell
Libbie Brook Gaddis
Ada Bruen Grier
Clara Brownlee Hutchinson
Fannie Whitenack Libbey
Rosa Moore
Jennie Nicol, M.D.
Inez Smith Soule
Fannie Thomson
Jennie Horne Turnbull
Nancy Black Wallace



This is your page made available to anyone wishing to comment on articles, the magazine or any topic of interest to our readers. Letters must be signed with full name, address and chapter. We reserve the right to edit as needed for space requirements and content.

From the Reader

Thank You

I recently moved from Seattle, Washington to Loveland, Colorado. Not only was I homesick and completely scattered the first few days, I was also lonely! I soon discovered that a Pi Phi chapter was only minutes away in Fort Collins at Colorado State University. I jumped at the chance to get involved! Not only have I met dozens of friends and contacts, but from the very first visit with Colorado Gamma, I have felt accepted and welcomed.

The Pi Beta Phi Fraternity deserves recognition for its national standards and high levels of excellence.

The Colorado Gammas deserve a heartfelt thank you. They made my move from Washington manageable and comfortable. I look forward to a long and active adventure with Pi Beta Phi and its infinite opportunities.

MEAGAN UNICK
WASHINGTON ALPHA
LOVELAND, COLORADO

I wanted to share a story about some wonderful Pi Phi alumnae in Tulsa, Oklahoma.

I am a Pi Phi, and when I pledged at Oklahoma State, I could not fully realize how strong the bond would be throughout my life. My mother, Oklahoma Alpha Betty Staggs Huckabay was very active in Pi Beta Phi, and has always told me about the bonds of Pi Phi, but it wasn't until the past year that I realized how much those bonds would mean.

My father married Oklahoma Alpha Marie Voegeli Heisley Drummond, who became terminally ill from breast cancer this past year. It was

in March 1996 that we learned that the cancer had spread to her liver and that Marie's chances for survival were not good. She began a brave battle, which ultimately ended in her death in October 1996. During these months, a group of Pi Phis provided tremendous support. In April 1996 they planted spring flowers in her yard and provided a day that brightened Marie's very grim outlook.

As Marie became less able to take care of herself, the Pi Phis formed a rotation schedule. One person was with her each day. They continued to come until her death. In fact, as the signs of death were growing stronger, one of the women, a nurse, provided tremendous support to the family.

My sister commented, "You Pi Phis do some pretty wonderful things."

I want to thank the Tulsa Pi Phi alumnae group for all of their support for Marie and her family, and for showing how powerful the Pi Phi bond can be. They really made a difference!

KIM DRUMMOND THOMAS
OKLAHOMA BETA
DALLAS, TEXAS

World Wide Web

My grandmother, Mildred Burnham Spottswood, was a Pi Phi at George Washington University in the late 1920s and early '30s. She was a dedicated member of the D.C. Alpha Chapter. As a New York Alpha I wear her pin with pride, but have always been curious about some of the inscriptions that came after her name on the back of the pin. My grandmother

passed away when I was very young and as a result I know very little about her or her years in our Fraternity.

Recently, I placed an entry on the guest book of the Pi Beta Phi (unofficial) web page stating that I was looking for information on D.C. Alpha. I was pleased to receive a reply from New York Alpha Fran DeSimone Becque, Director of Collegiate Programming and Fraternity Archivist. She gave me helpful information about my grandmother's pin and about her chapter's history. Fran also suggested that I look for my grandmother in old editions of *The ARROW* that are kept in our chapter house.

What I discovered in those old editions of *The ARROW*! I was pleased to discover a whole profile, complete with a picture, about my grandmother in the February 1932 edition of *The ARROW* in a section entitled "With the Actives."

I just wanted to thank Fran, *The ARROW*, and Central Office for helping me make this connection to my grandmother. Without the web page, the e-mail from another dedicated Pi Phi, or the old editions of *The ARROW* magazine, I would never have fully known what an exceptional woman my grandmother was. She was a true Pi Phi and I am honored to be a member in her legacy.

JORDANA EVE MORSE
NEW YORK ALPHA
SYRACUSE, NEW YORK

Editor's note: The above mentioned web site is designed and maintained by Maryland Beta Anita Tracy. For more information about Pi Beta Phi's newly-constructed official web site see page 56.

News from Arrowmont

by Gretchen Church

Artists-in-Residence

Profiles continued from the Spring issue of The ARROW.

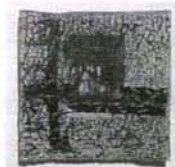
Sondra Dorn



Textile artist Sondra Dorn came to Arrowmont after attending graduate school at the University of Washington in Seattle, Washington. Prior to that she was a CORE student at Penland School of Crafts in North Carolina.

Sondra sought a residency at Arrowmont because she really liked this area of the South. "I also really respect the professionalism of the school and the way it is run," she added. "I really believe this will be a good transition between graduate school and the real world!"

Her work encompasses all aspects of surface designs—dyes, photographic silk screening, free-hand machine and hand embroidery, piecing and layering. "My work is really content driven," Sondra explained. "I look at a lot of early American quilts and their role as a voice for women. My work isn't specifically feminist, but it's about that kind of personal expression in the textile."



She also utilizes her personal journal writings, which are sometimes stitched onto the surface of a particular piece.

Hoping to one day create a small workshop program, Sondra is paying special attention to the day-to-day operation of Arrowmont. She is also grateful for the teaching experience and the spacious resident studio. "I really cherish the fact that I have a private studio," she said.

In May Sondra travelled to Kansas City to teach a workshop at the National Surface Design Conference. Excited about the exposure gained from that opportunity, she plans to enter her work in more shows this year.

Sondra's plans after Arrowmont will take her back to Penland School of Crafts where she has been accepted into the residency program. "I think that these institutions have a responsibility to support a residency program because it isn't easy for artists to go out into the world and make work," she explained. "That's how you make it—with the support of already respected schools like Arrowmont."

Jill Oberman



after graduate school she entered the residency program at Anderson Ranch in Snowmass Village, Colorado. Within five days of leaving Colorado, she was in her car travelling to Arrowmont.

Jill Oberman has been going non-stop since she entered graduate school at the Rochester Institute of Technology. Immediately

When her residency at Arrowmont is complete, she may enter another residency program or return to her hometown of Chicago. "It is really exhausting moving around every year," she professed. "I really miss my family and I may look into finding a clay studio in Chicago."

Jill took her first clay class at New York's Hamilton College, but wasn't completely serious about it until her senior year. "To me the whole process of making art is scary," she said. "Part of that has to do with what I'm saying and how personal it is to me."

Her goals include having her own studio and showing her work nationally. "I have a hard time calling myself an artist," she laughingly said. "I just make stuff!"



The "stuff" she makes consists of influences she picks up in everyday life, like books, music, television and people.

"My work is, in general, about how people make, or don't make, connections," she explained. "I think it's complicated to do that in life and my work is about my perspective, not necessarily my experience."

Jill says she knows that residencies are hard to come by and she feels very lucky about being at Arrowmont. "My favorite thing about Arrowmont is the fact that it supports and encourages new talent. All the things that Arrowmont offers are reinforcing the fact that having art in your life is important."

News from Arrowmont

Special Events at Arrowmont

Wood Studio Opening Reception



Ray Key holds a woodturning demonstration at the wood studio opening reception. Ray, an Arrowmont spring faculty member, is an internationally renowned woodturner from Worcestershire, England.

Arrowmont's wood studio was constructed and equipped to meet a growing national demand for wood education in the specialized fields of carving, sculpture, furniture construction, and turning. In celebration of its recently completed state-of-the-art wood studio, Arrowmont invited wood enthusiasts and the general public to an opening reception on March 10. Approximately 200 guests attended and enjoyed the festivities including an exhibition of the Drown Wood Collection and refreshments. Dawn Ford, Chairman of Arrowmont's Board of Governors, thanked contributors to the studio. Sandra Blain, Director of Arrowmont, also recognized donors, equipment donors, and sponsors of the event.

Tennessee Designer/Craftsman Invitational: Artful Living

Arrowmont hosted a successful opening reception for its Tennessee Designer/Craftsman Invitational, Artful Living exhibition on March 7, 1997. The exhibition featured more than 300 artworks and objects made by 129 of Tennessee's finest artists and craftspeople in a setting related to the home. Gallery Coordinator Billi R.S. Rothove transformed Arrowmont's gallery into an alternative living space with the assistance of a local architect and interior designer.

The threefold purpose of the exhibition included providing Tennessee's professional artists and craftspeople additional public exposure, educating new audiences about the quality and scope of arts and crafts being created in Tennessee, and encouraging connections between living environments and fine arts and crafts.

Nashville, Tennessee artist Karen Turner with her artworks, Angelic Host-Isabel and Angelic Host-Bonnie, attended the Artful Living reception in March.



Calendar of Events Conference/Workshop Schedule

June 2-6, 9-13, 16-20, June 23-July 4,
July 7-11, 14-25, July 28-August 1,
August 4-8, 1997

Summer Classes

August 23-24

Tennessee Woodturners Symposium

September 7-13

Polymer Clay Conference & Workshops

September 21-27, September 28-October 4
Elderhostel

October 14-21

Enameling Conference & Workshops

October 24-25

East Tennessee Art Educators
Workshops

Gallery Exhibitions

April-August 8

National Summer Faculty Invitational

August 15-October 4

Making History; Pushing the Craft of
Polymer Clay

October 10-November 15

Tradition & Transformation:
International Enamel Exhibition

Reception: October 16, 6:30-8 p.m.

Arrowmont galleries are open year round to the public, Monday-Saturday 8:30 a.m.-4:30 p.m. For information call Arrowmont at (423) 436-5860.

Pi Beta Phi Foundation



Two Scholarships Endowed in Memory of Adele Collins Mason

Last fall Jack Mason phoned South Coast, California Alumnae Club President Grayne Ferguson Price to discuss his intentions of funding a scholarship in his wife's name. His wife, California Epsilon Adele Collins Mason, was a devoted member of the alumnae club for many years. The Masons had often discussed establishing a scholarship to benefit members of Pi Beta Phi. Adele had recently passed away and Jack Mason knew it was something he wanted to pursue in her memory.

Grayne Price contacted Pi Beta Phi Foundation President Adrienne Hiscox Mitchell to discuss the contribution Jack Mason was preparing to make to the club. According to Grayne, she had concerns about the tax-deductibility of a gift to the club, as well as the amount of time the club could devote to managing an endowment. Setting up the endowment within the Pi Beta Phi Foundation would allow, Mr. Mason to establish guidelines for the scholarship

endowment, and his gift would be tax-deductible to the full extent of the law. Jack Mason agreed this was an attractive option and made his gift to the Foundation, funding two new scholarships. The first benefits qualifying alumnae; the second

benefits undergraduates. The Adele Collins Mason Alumnae Continuing Education (ACE) Scholarship is the Foundation's first named alumnae scholarship.

The Mason Scholarships were awarded for the 1997-98 academic year. California Kappa Jan Shoenberger is the first recipient of the Adele Collins Mason ACE Scholarship, and California Eta Jennifer Vallejos will receive the first Adele Collins Mason Undergraduate Scholarship.

Both scholarships give preference to Pi Phi candidates from the Southern California region.

Adele Mason was a member of a local sorority at San Diego State University in the 1930s, and served as president her junior year. After her graduation, Adele's sorority chose to become a chapter of Pi Beta Phi. She was an alumna initiate of the California Epsilon chapter in 1948. Adele was active in the South Coast Alumnae Club and the local Panhellenic, participating in bridge groups with both organizations.

"Adele loved Pi Phi so much," said Grayne. "She was willing to do any job and was visible at every club event. She is greatly missed."

Arrowmont Receives Foundation Grant

The Pi Beta Phi Foundation recently granted \$60,000 to Arrowmont School of Arts and Crafts. The grant will provide critical funding for capital expenditures. This marks the first grant to Arrowmont from the Pi Beta Phi Foundation outside of the Campaign for Arrowmont.

The Campaign for Arrowmont was initiated by the Pi Beta Phi Foundation and the Arrowmont Board of Governors in 1989 to provide endowment and capital funding essential to the school's future. The campaign came to a successful conclusion in 1995, raising more than \$2.8 million.

Arrowmont capital expenditures funded by the Foundation's recent grant include equipment for the Drawing and Painting, Textiles, Metals, Printmaking, and Clay Studios; computer systems for administrative staff; a fire alarm system for the Red Barn; and general building repairs.

Continued support of Arrowmont is an important priority for the Foundation. Gifts to the Friendship Fund and unrestricted gifts make this support possible.

All 1997-98 scholarship recipients are pictured on pages 22-24.

This listing includes recognition and memorial gifts to the Pi Beta Phi Foundation from September 1, 1996 through March 31, 1997. Recognition and memorial gifts are listed in the Winter and Summer issues of The ARROW.

Pi Beta Phi Foundation

In Recognition of:

ARIZONA ALPHA PLEDGE CLASS OF 1959

by Norma Nicol Hamilton

PAMELA DUNLOP BECKER, Ohio Zeta, in honor of her 50th birthday

by Kathryn Ruddock Snow

SARA LICHTENBERG BLOOMQUIST, Ohio Zeta

by Carolyn Helman Lichtenberg

ANN WARMACK BROOKSHIRE, Texas Beta

by Jane Porter Warmack

CHAPTER LOYALTY DAY

by Denver, Colorado Alumnae Club

JACYNTH THOMPSON ESTABROOK, Maryland Alpha

by Greater Springfield, Massachusetts Alumnae Club

FLORIDA BETA CHAPTER

by Floy Jean Pflough Hale

CYNTHIA TAYLOR FOLEY, West Virginia Gamma

by Joyce Rogers Vettel

VIRGINIA BLAND FRY, Tennessee Beta

by Carrie-Mae MacNair Blount

Myra De Palma Reimer

GAMMA PROVINCE COLLEGIATE CHAPTERS

by Patricia Emens Anderson

MARIAN DAVIS GOFF, Arkansas Alpha

by Cynthia Coates Miller

ANN JOHNSON GUNN, Louisiana Beta, in honor of her recent visit to our club

by Brazos Valley, Texas Alumnae Club

ANNE PAULE HALL, Iowa Gamma

by Mount Pleasant, Iowa Alumnae Club

JANICE HITE HOYT, Ohio Epsilon, in honor & admiration of her strength & sisterhood

by Carolyn Lake Yenrick

MARTHA ROWAN HYDER, Texas Alpha, in appreciation for hosting Texas Delta's Bid Day Dinner

by Texas Delta Chapter

ILLINOIS ALPHA CHAPTER

by Jean Marie Egmon

ILLINOIS ALPHA PLEDGE CLASS OF 1941, in

honor of the 55th anniversary of our initiation (first to be initiated in Holt House)

by Shirley McElroy Grier

ILLINOIS EPSILON CHAPTER

by Jean Marie Egmon

INDIANA DELTA CHAPTER, in honor of their 75th anniversary

by Janice Kincaid Clifford

LESLIE DOTSON JAGGERS, Georgia Alpha

by Lisa Nicole Masters

CATHY OTREMBIA JOHNSON, Ohio Epsilon, in

honor & admiration of her strength, courage, friendship & dedication

by Carolyn Lake Yenrick

MARTHA BRUCE KUPSKY, Ohio Epsilon, in honor of her service as Theta Alumnae Province President

by Carolyn Lake Yenrick

EVELYN PETERS KYLE, Illinois Alpha

by Sara Wareham Waggoner

ELIZABETH H. LICHTENBERG, Ohio Alpha

by Carolyn Helman Lichtenberg

ANN BARLOW LOVELESS, Arkansas Alpha

by Memphis, Tennessee Alumnae Club

ANNE MARGARET MCCARY, Alabama Alpha

by Emily Bell Wirtes

MARIAN MILLER

by Cynthia Coates Miller

MY WASHINGTON GAMMA SISTERS

by Elaine Hazleton Bolton

NEW YORK ALPHA CHAPTER, in honor of

Chapter Loyalty Day

by Frances DeSimone Becque

PALM BEACH COUNTY, FLORIDA ALUMNAE CLUB

by Jane Burtis Smith

PAST GRAND COUNCIL OFFICERS

by Penelope Dix Bernard

ANN DUDGEON PHY, Texas Alpha

by Carrie-Mae MacNair Blount

Nancy Philen Thompson

RICHMOND, VIRGINIA ALUMNAE CLUB

by Elizabeth Chambers George

JEAN WIRTHS SCOTT, Pennsylvania Beta, in

appreciation for speaking to the Southern Area Council of Pi Beta Phi

by South Bay, California Alumnae Club

MARY FRANCES CLARK SMITH, Texas Gamma

by Ann Warmack Brookshire

EMILY RUSSELL TARR, Texas Beta

by Tennessee Beta Chapter

Nancy Henley Harrington

Christine Lockwood Mazza

Lucy Roberson Pfirman

Kathryn Dunbar Rasmussen

Marcia Miller Scharfen

Julie Ann Zieg

MARY MILLER BEASLEY, Missouri Beta

by Carolyn Beasley Gilbert

SUSAN REARDON BEDINGFIELD, Oklahoma Beta

by Mary Loy Tatum

LOUISE SIMMINGER BEGGS, Indiana Delta

by Kay Cross Baker

Ronald & Vivian Gordon

MARJORIE HERRALD BERG, Iowa Zeta

by Omaha, Nebraska Alumnae Club

CHARLOTTE H. BISSELL, Wisconsin Alpha

by Carolyn Lake Yenrick

JANET PALMER BOBISUTHI, Wisconsin Beta

by Chicago West Suburban, Illinois

Alumnae Club

MIRIAM CLAMMER BOGGESS, Kansas Beta

by Barbara Boggess Davis

ARDATH HAGAMAN BOOTES-STEVENS, Michigan Alpha

by Naples, Florida Alumnae Club

CALISTA CREEL BRANDT, Indiana Delta

by Amy Wheaton Keaton

Naples, Florida Alumnae Club

Stacy Schroeder

KATHLEEN CEARNAL BRIDGES, Missouri Alpha

by Joanne Hunt Hook

Jo Alice Wynne Tomforde

JAMES BROOKS, father of Kathleen Brooks

Verschoyle

by Van, Vanessa and Lu Ann Browning

Redman

Sally Reilly

BILLYANN CLIPPETT BROWN, Michigan Gamma

by Marilyn Webb Hoch

MARGERY BELLOWS BROWN, Illinois Zeta

by Aleen Rosenburger Corbett

FRANCES ROSSER BROWN, Oklahoma Alpha

by Allece Locke Garrard

Maurine Ditmars Kerr

Mary Cole Smith

CAROLINE PAINTER BROWN, Florida Beta

by Barbara L. Wood

CHARLES CARROLL, husband of Amelia Fisher

Carroll

by Washington, D.C. Alumnae Club

MARIAN BIXLER CASSADY, New York Alpha

by Mary Cassady Crommelin

SUZANNE BLACK CAYLOR, Indiana Epsilon

by Betty Eyer Kephart

ANNA STRANQUIST CHAIN, Washington Alpha

by Shirley Butler Frost

CARENE AMBRISTER CLARK, Oklahoma Alpha

by Muskogee, Oklahoma Alumnae Club

In Memory of:

GERTRUDE ADDICOTT, Ohio Alpha

by Virginia Hoover Franklin

BERTHA "BETTY" WILSON ALLEN, D.C. Alpha

by Washington, D.C. Alumnae Club

Jim & Judith Allen Stelson

JANET HEMPHILL ARMSTRONG, Illinois Zeta

by Amy Wheaton Keaton

Naples, Florida Alumnae Club

BETTY BARTHOLOMEW BALDWIN, Illinois Theta

by Southwest Florida Alumnae Club

NATALIE BRYAN BATEMAN, Ohio Alpha

by Virginia Hoover Franklin

CHRISTINE HARRISON BEARD, California Zeta

by Susan Moran Anthony

Patricia Wallis Distad

Susan Wormser Erne

Sandra Widosh Fair

Sally Lewis Grogg

P i B e t a P h i Foundation

ELIZABETH REDFORD COLE, Tennessee Alpha
by Beta Book Club of Chattanooga,
Tennessee Alumnae Club

MARGARET BOWKER COOPER, Illinois Alpha
by Lewis Aten

Stella Blade
Louise Denison
Virginia Bland Fry
Evelyn Peters Kyle
Carolyn Pavletich Lesh
Betty Blades Lofton
Jean Loots
Cecil & Kay Lovdahl
Janet Irey Lovdahl
James & Isabel Marshall
Adrienne Hiscox Mitchell
Alice O'Toole
Eloise Ryan
Marjorie Schaumleffel
Jacqueline McGinnes Shoemaker
James & Frances Toal
Jim & Jackie Wheat
Evelyn Ruskin Work
Ruth Wright

ANNA CAROLYN MILLER COSBY, Texas Delta
by Myldred Allen Hightower
Delia Hines Stephens

ROBERT E. CROSS, father of Kay Cross Baker
by Ethel Reiss Bean
Frances DeSimone Becque
Roberta Boyd Bragan
Kay Knittle Brock

VIRGINIA CULBERSON DAHLBERG, Florida
Alpha

by Tucson, Arizona Alumnae Club

ELIZABETH LANDRESS DALTON, Tennessee
Alpha

by Marion Dobbins Griscom

ETHEL KRIEGER DERING, Kentucky Alpha
by Martha Newkirk Daniels

MARY JACKSON DEUTSCHBEIN, Illinois Zeta
by Naples, Florida Alumnae Club

MARY ANN MIZE DICKINSON, Kansas Alpha
by Joan Darby Edwards
Lawrence, Kansas Alumnae Club

ROSE MCCOLLOCH DRESSLER, Kansas Alpha
by Joanne Hunt Hook

JENNA ANNE DRUCK, Colorado Alpha
by Colorado Alpha Chapter

MARIJEAN HUTCHISON DUCETT, Indiana Delta
by Mary Crane Swarts

WILLIAM DULIN, husband of Maurine Stuart
Dulin

by Myra De Palma Reimer

PATRICIA PRUDEN DYER, Colorado Beta
by Jeanne McClean Ehekircher

JOAN HAMILTON EGAN, Kansas Alpha
by Kansas City, Kansas Alumnae Club
Suzanne Sawyer McCann
Ann Rumsey Olson

ELISE MONTANDON EILAND, Colorado Alpha
by Gordon B. Eiland

DOROTHY ATKINSON ELA, Wisconsin Alpha
by Madison, Wisconsin Alumnae Club

ROBERT ELLIOTT, husband of Jane Salisbury
Elliott

by Jane Burtis Smith

DOROTHY FOWITZ ELLIOTT, Oklahoma Alpha
by Joann Ruese Stucker

EVELYN GABEL ENTEMAN, Michigan Beta
by Northern New Jersey Alumnae Club

JANET SHAW WOODMAN ESTRADA, Wisconsin
Alpha

by Madison, Wisconsin Alumnae Club

BILL FILSON, father of Cathy Filson Cooper
by Illinois Eta Chapter

DOROTHY SAIN FINDLAY, Ohio Beta

by Mildred Marquardt Sain

BARBARA CLINGMAN GALM, Indiana Delta
by Kristin Noer Olson

BILL GARRISON, son of Frances Farris Garrison
by Nancy Fawn Wilkerson Diehl

LOIS ROPER GEIGER, Ohio Alpha

by Indiana Delta Chapter House

Corporation Board

Elizabeth Minnich Stoddart

EMMA DORRIS GIGER, Missouri Beta

by Anita Crozat Cassilly

LEWIS BOND GRAFFT, husband of Margaret
Simpkins Grafft

by Clearwater, Florida Alumnae Club

ANDREW GRIMM, father of Jeanie Grimm
Vickroy

by Margaret Wilson Jones

MARGARET TANNER HAMILTON, Utah Alpha

by Ann Hamilton Pebbles

RUTH WILLIAMS HANSEN, D.C. Alpha

by Jim & Judith Allen Stelson

ELVA HARTFORD HARTLEY, Nebraska Beta

by Annette Harris Johnston

SARAH HEAGLER HARVEY, Arkansas Alpha

by Jane Wills Armel

Emilie Gautier Gordon

Ruth Beasley Hooker

Marian Scott Johnson

Evelyn Peters Kyle

Jackie Hughes Langdon

Barbara Mackey Ogilvie

Virginia Norton Stimson

Rose Marie Mayhew Wiegand

MURIEL BARTLETT HAUBNER, Illinois Alpha

by Shirley McElroy Grier

Marjorie Adcock Seaton

MARGARET SEYBOLD HILL, Kansas Alpha

by Frances Bonnyman Evans

Joan Scholes Hill

Lawrence, Kansas Alumnae Club

Bill & Gwen Chandler Niewoehner

MARGARET GEORGE HOUSTON, Colorado Alpha

by Olivia Ryland Bennett

LUCILE BARNETT HULLFISH, Illinois Delta

by Joan Hullfish Bailey

JEANNE ROUSH JANETT, Iowa Zeta

by Joan Smith Kane

RALPH JOHNSON, husband of Susan Crabb

Johnson

by Northern New Jersey Alumnae Club

MARY WOODCOCK JOSLIN, Oregon Beta

by Janet Johnson Ackles

HAROLD JUCKETT, husband of Carolyn Herrick
Juckett

by Margaret Wilson Jones

EUDELL "HANNAH" RIPPETOE JULIAN,

Tennessee Gamma

by Polly Murray

EDWARD KALAMAROS, husband of Marilyn

Foster Kalamaros

by Michiana, Indiana-Michigan Alumnae
Club

LOUISE ROSSER KEMP, Oklahoma Alpha

by Allee Locke Garrard

KATHLEEN BOHANNON KRAMER, Texas Delta

by Carolyn Pavletich Lesh

MARY KATHLEEN LAFFERTY, Illinois Alpha

by Northern Virginia Alumnae Club

VIRGINIA MIDDLETON LANDRETH, Texas Alpha

by Beth van Maanen Beatty

Frances DeSimone Becque

Marianne Dunstan Brady

Fort Worth, Texas Alumnae Club

Susan Landreth Fry

Maurine Hager Jones

George Landreth

Harry & Donna Landreth

Mary Jane Landreth

Carolyn Pavletich Lesh

Sarah Ruth Mullis

Linda Burrows Priest

Jane Landreth Russell

Shelley Lyn Russell

Carol Inge Warren

NORMA ROSE LAROCK, mother of Peggy

LaRock Blanchard

by Roberta Boyd Bragan

MARTHA FEENY LOHMAN, Missouri Alpha

by Eugene W. Lohman

PATRICIA WARNICK LOTZ, Kansas Alpha

by Susan Baker Campbell

Suzanne Sawyer McCann

CAROLYN KRAUSE MADDOX, Kentucky Alpha

by Lynn Maddox McDonald

BETTY MAGILL, Tennessee Alpha

by Beta Book Club of Chattanooga,

Tennessee Alumnae Club

NANCY L. MANNING, Oregon Delta

by Esther Gibbard Manning

MARY "MIMI" HOWELL MARTIN, Nevada Alpha

by Susan E. Lombardi

W. BEVERLEY MASON JR., husband of Helen

Ann Prather Mason

by Joan Potter Stout

DORIS MULLENDORE MATTHEWS, Oklahoma

Beta

by Jean Orr Donaldson

VERA ALLISON MCCUNE, Oklahoma Alpha

by Muskogee, Oklahoma Alumnae Club

RUTH MCCURDY, mother of Molly McCurdy

Foster

by Jean Burcky Burkholder

Pi Beta Phi Foundation

JEANNE GRAHAM McNICHOLAS, Texas Alpha
by Beaumont, Texas Alumnae Club
Mary Robinson Woodward

NELL BOLANZ MILLER, Texas Beta
by W. C. Miller

JACK MILLS, husband of Annette Mitchell Mills
by Myra De Palma Reimer

PHYLLIS RUSSEY MILTENBERGER, Indiana Beta
by Muncie, Indiana Alumnae Club

MICHAEL MITCH, grandfather of Mary Mitch
Mullendore
by Lou Ann Montgomery Carter

JANE McWHORTER MOORE, Texas Alpha
by Sherman-Denison, Texas Alumnae Club

CHARLOTTE BROWN MURRAY, Vermont Beta
by Roger R. Festa

MY PI PHI FRIENDS
by Cora Miltenberger Creighton

CLARA TAFT NIXON, California Beta
by Adrienne Hiscox Mitchell

NORMA MOWRY NOGGLE, Colorado Beta
by Mary Anne Riddick Cesario

CAROLINE BUSHMAN OTT, Missouri Alpha
by Helen Walton Andrae
Martha Gordon Dewey

PAST MEMBERS OF OUR CLUB
by The Monday Club of the Denver,
Colorado Alumnae Club

IONE SWAN PAUGH, Indiana Beta
by Southwest Florida Alumnae Club

SHIRLEY KELLEY PAYNE, Washington Alpha
by Aileen Aylsworth Welgan

THOMAS ALBERT PHILLIPS, father-in-law of Jan
Schwethelm Phillips
by Waco, Texas Alumnae Club

MARGARET NICHOLSON RAY, Ohio Delta
by Northern New Jersey Alumnae Club

MARTHA GILES REEVES, Iowa Gamma
by Naples, Florida Alumnae Club

ELIZABETH HATCHER RIDDICK, Virginia Beta
by Mary Anne Riddick Cesario

DALTON "DOLLY" BEVILLE ROBERTSON,
Arizona Alpha
by Tucson, Arizona Alumnae Club

MATILDA "MATTIE" MARIS SEVERSON, Montana
Alpha
by Harmon & Julie Abrahamson
Mary Hammond Atkinson
Richard & Mary Baltisberger
Neel & Jeanne Beckner
Debora F. Bergstrom
George & Mary Brushmiller
Marla Church
Marie Norton Eckstein
Ruth J. Hippely
Donna Jackson
Martin & Diana Jones
Bert & Monica Larivee
Kathleen Maher
John & Jeanne Marszalek
Bernard & Marcia O'Kelly

Oktibbeha County, Mississippi
Democratic Party Executive
Committee

Joyce Lester Pond
Beverly Richardson
Virdie Savage
Merla Sawyer
Pam Scarbrough
Mrs. Allan Smith
Sarah Severson Snow
Beverly Simons Spidel
Lauren M. Tonge
Viola Torkelson
Betty L. Ulvedal
Lela M. Wolenz

MARIALICE SHARY SHIVERS, Texas Alpha
by Celia Katharine Roberts

HALCYON MITCHELL SLOSS, Illinois Epsilon
by Valley of the Moon, California Alumnae
Club

PATRICIA MACLEOD SMITH, Washington Alpha
by Shirley Butler Frost
Mary Elizabeth Shipman Lomen

LYNETTE WESTFALL SMITH, Iowa Zeta
by Joan Smith Kane

LAVONE HAMILTON SMITH, Iowa Beta
by Michiana, Indiana-Michigan Alumnae
Club

NELL ANDERSON SPRUCE, D.C. Alpha
by Frances Spruce

BERNICE SCHILL STEARNS, Ohio Beta
by Naples, Florida Alumnae Club

ANNAMAY TABOR, mother of Carolyn Tabor
Krings
by Krista Belt Lee
Tennessee Gamma AAC
Tennessee Gamma Chapter

ELIZABETH JOHNSTON THOMPSON, Wyoming
Alpha
by Valley of the Moon, California Alumnae
Club

WAYNE ETHERIDGE TODD, Texas Beta
by Northern Virginia Alumnae Club

VIVA YOUNG TORCOM, Oregon Beta
by Bruce & Marilyn Thompson Johnston

ZOA THOMASON TRENT, Indiana Beta
by Tom & Jan Threlkeld Moore

LOLA TURNER UPTON, Arizona Alpha
by Las Cruces, New Mexico Alumnae Club

SARAHJANE PAULSON VANASSE, Washington
Beta
by Janet Johnson Ackles
Nancy Johnson Anklam
Kay Cross Baker
Linda Knutzen Barbo
Carol Pomeroy Elwell
Shirley Butler Frost
Jeannine Van Wagenen Funk
Katherine Bain Gaston
Jennifer Johnston Georges
Alba Halverson Hiestand
Chris Moseley Korte
Helen Anderson Lewis

Mary Elizabeth Shipman Lomen
Nashville, Tennessee Alumnae Club

Mary Stocking Noble
Jeannette Chandler Randle
Frances Crookes Rebmann
Myra De Palma Reimer
San Francisco, California Alumnae Club

Luellen Clymo Smith
Upper Olympic Peninsula, Washington
Pocket
Washington Beta Chapter
Joann Rich Willey

KATHY WATERS VERGON, Illinois Theta
by Sharron Langnecker Chimley
Loree Chimley Skvara

JAMES H. VERSCHOYLE, father of Kathleen
Brooks Verschoyle
by Vanessa Ann Redman
Sally Reilly

FLORENCE KING WALLACE, Illinois Zeta
by Jane Burtis Smith

HELEN HOPKINS WAMPLER, Indiana Beta
by Marilyn Wiegand Pecsok

BARBARA SMITH WEBB, Missouri Beta
by Anita Crozat Cassilly

BETTY GARY WEBBER, Arkansas Alpha
by Barbara Bass Berry

ISABELLE PEDDICORD WEIRICK, Iowa Beta
by Betty Bacon Bonge

WILLIAM WELGAN, husband of Aileen
Aylsworth Welgan
by Nancy Johnson Anklam
Linda Knutzen Barbo
Charles & Linda Willis Dagg

KATHRYN BRADLEY WETZEL, Illinois Delta
by Barbara Lee Fay

BARBARA JONES WHARTON, Indiana Zeta
by Joan Hueber McKee

DOROTHY KENWORTHY WHEELER, Illinois Delta
by Quad Cities, Illinois-Iowa Alumnae Club

EDITH CONNET WILLIAMS, Maryland Alpha
by Betty Feezel Wilk

ELINOR GRUBB WILLIAMS, Missouri Alpha
by Kathy Paullin Ashmore
Mary Lou Williams Paullin

MARIAN WEBBER WILLIAMSON, Louisiana
Alpha
by Barbara Bass Berry

SALLIE SCOGGIN WILSON, Michigan Beta
by Fort Worth, Texas Alumnae Club

ELEANOR SEXTON WILSON, Illinois Zeta
by Aleen Rosenburger Corbett

ETHEL MORLAND WORD, Alabama Alpha
by Rebecca Word Hasemeier

ELIZABETH FROST WORTHINGTON, Kentucky
Alpha
by Tucson, Arizona Alumnae Club

JOAN NIXON WUTHRICH, Indiana Delta
by Michiana, Indiana-Michigan Alumnae
Club

ELIZABETH BELLE EWERS ZIMMERMAN,
Colorado Alpha
by Nadine Lake Zimmerman

Pi Beta Phi Foundation Graduate Scholarship Recipients

Scholarship Recipients Selected

The Pi Beta Phi Foundation Trustees and members of the Undergraduate Scholarship, Alumnae Continuing Education Scholarship and Graduate Fellowship Selection Committees are proud to announce that 49 Pi Phis will receive awards for the 1997-98 academic year. These women have displayed excellence in their studies and in their volunteer service for their communities and Pi Beta Phi.

If you are in need of financial assistance and would like to apply for one of the Foundation's awards for the 1998-99 academic year, send a note to the attention of Scholarship Program, Pi Beta Phi Foundation, 7730 Carondelet, Suite 333, St. Louis, Missouri 63105. Please indicate which application you are requesting.

The Foundation selects recipients based upon need, academic performance, service to the community and service to Pi Beta Phi. Eligibility rules for each category are as follows:

Undergraduate scholarships require recipients to be active members in good standing and have a minimum GPA of 3.0.

Alumnae scholarships require recipients to be out of school for two years or more and to be dues-paying alumnae members.

Graduate fellowships require recipients to attend school full time in an accredited program and to be dues-paying alumnae members.

Graduate Fellowships



KIMBERLY GIBSON
California Zeta
University of California-
San Francisco
Doctor of Medicine



DEBRA JACKOWNIAK
Illinois Alpha
Rush University Medical
College
Doctor of Medicine



HOLLY SAIGO
Florida Delta
Juris Doctorate and
Master of Business
Administration

Senior Focus Graduate Fellowship



TRACY BONNER
Tennessee Gamma
University of Tennessee
Master of Science in
Sport Administration



ANDREA LEPORE
GRAHAM
California Delta
Juris Doctorate



MARTA DEBERARD HANSON
Indiana Epsilon
Univ. of Southern Mississippi
Master of Occupational &
Technical Education

Alumnae Continuing Education Scholarships



ROBERTA PHILLIPS HILL
Illinois Epsilon
Wayne State University
Physician Assistant

NOT PICTURED:

SUSAN BETCHER
Washington Alpha
University of Colorado
Juris Doctorate

Adele Collins Mason Alumnae Continuing Education Scholarship



JAN SHOENBERGER
California Kappa
University of Southern
California
Doctor of Medicine

Pi Beta Phi Foundation Undergraduate Scholarship Recipients

Friendship Fund



KAREN DICK
Tennessee Delta
University of Memphis
Political Science



JENNIFER GROSZKOWSKI
Connecticut Beta
Yale University
Psychology



RENEE HAMEL
Oklahoma Alpha
University of Oklahoma
Zoology/Pre-Med



HEATHER HERZOG
New Mexico Alpha
Univ. of New Mexico
Biology and Psychology



HEATHER HUDSON
Ohio Epsilon
University of Toledo
Public Relations



ELIZABETH KEMMERER
Tennessee Beta
Vanderbilt University
Biology



TAMERA KEUNING
Iowa Beta
Simpson College
Elementary Education



TRICIA LAING
Oklahoma Beta
Oklahoma State Univ.
Speech Pathology



SHANNON LAMBERT
Oklahoma Beta
Oklahoma State Univ.
Psychology



JENNIFER LILES
Ohio Zeta
Miami University
Marketing



HEATHER MILLER
Pennsylvania Zeta
Washington & Jefferson College
Political Science



LAURA MULLEN
Indiana Zeta
Ball State University
Fashion Merchandising



LIV NORDIN
Virginia Epsilon
University of Virginia
Business



CARA PACIFICO
Pennsylvania Theta
Villanova University
Communication Arts



ANN PALKER
Pennsylvania Zeta
Washington & Jefferson College
Psychology



FELICIA PLATT
Pennsylvania Iota
Univ. of Pennsylvania
Finance and Marketing



SARAH REINER
Florida Delta
University of Florida
Political Science



STEPHANIE REINHART
Iowa Beta
Simpson College
Psychology



SARAH SCHOPER
Texas Delta
Texas Christian Univ.
Political Science



KATHRYN SCHWIE
Tennessee Delta
University of Memphis
Communication

Friendship Fund



KELLEY TEAGUE
Florida Delta
University of Florida
Public Relations



MARY (KATIE) THOMPSON
Colorado Gamma
Colorado State University
Financial Accounting



STEPHANIE TUINSTRA
Iowa Beta
Simpson College
Elementary Education



JAIMEE UNTIEDT
Colorado Gamma
Colorado State Univ.
Business-Finance



JAIME WIENS
California Mu
Pepperdine University
Accounting

Friendship Fund



CLAIRE ZELLERS
Missouri Beta
Washington University
Business



CHERYL PASSANISI
Missouri Alpha
University of Missouri
Occupational Therapy



ANGELA QUINLEY
Missouri Alpha
University of Missouri
Broadcast Journalism-Pre-Law



EMILY HEWITT
Oklahoma Alpha
University of Oklahoma
Public Relations



JOLYNDA GRAY
Indiana Alpha
Franklin College
Elementary Education

Louisiana Alpha Triple M



JULIE HEITZMAN
Mississippi Alpha
Univ. of Southern Mississippi
Nursing



LINZIE BROWN
Missouri Beta
Washington University
Biochemistry and French



HEATHER CARPENTER
South Dakota Alpha
Univ. of South Dakota
Biology



CAROLINE DILLON
Arizona Alpha
University of Arizona
Marketing



JENNIFER VALLEJOS
California Eta
Univ. of California, Irvine
Psychology and Social
Behavior

Harriet Rutherford Johnstone



ERIN CLINE
Iowa Eta
Drake University
Accounting/Corporate
Finance



SHANNON CLOYES
Oklahoma Beta
Oklahoma State Univ.
Family Relations and
Child Development



MICHELLE CROCKER
California Mu
Pepperdine University
Biology



ANDREA CSOMOS
Ohio Epsilon
University of Toledo
Political Science and
Communication-Pre-Law

Melissa Gail Aptman



MELISSA GAIL APTMAN

Holiday



LINZIE BROWN
Missouri Beta
Washington University
Biochemistry and French



HEATHER CARPENTER
South Dakota Alpha
Univ. of South Dakota
Biology



CAROLINE DILLON
Arizona Alpha
University of Arizona
Marketing



JENNIFER VALLEJOS
California Eta
Univ. of California, Irvine
Psychology and Social
Behavior

New York Zeta



SHANNON CLOYES
Oklahoma Beta
Oklahoma State Univ.
Family Relations and
Child Development

Jo Ann Minor Roderick



MICHELLE CROCKER
California Mu
Pepperdine University
Biology

Ruth Barrett Smith



ANDREA CSOMOS
Ohio Epsilon
University of Toledo
Political Science and
Communication-Pre-Law

Frances Hall Comly

NOT PICTURED:

MEGAN JORDAN
Illinois Epsilon
Northwestern University
Psychology



4U

Zip **ANNUAL FEE**
 Mega **PERKS**
 Low **APR** Prime + 7.9% Annual Percentage Rate
AND it's Solid Pi Phi!

Students { Please call 1-800-787-8711, ext. 3849 now for a special student application.

Alumnae, fill out the application and mail to program manager, Coverdell and Company, Affinity Department, 2622 Piedmont Rd., NE, Atlanta, Georgia 30324.

Yes!

- Please send me the Pi Beta Phi Classic.
 Please send me the Pi Beta Phi Visa Gold.

Minimum \$35,000 household income required.

ALUMNAE APPLICATION

Please be sure to sign and fill out all portions of this application. Be sure to indicate all income you want considered and its source. The processing of this application may be delayed if you omit any of the information requested.

APPLICANT INFORMATION (PLEASE PRINT)

First Name	Middle Initial	Last Name
Social Security Number	Date of Birth	U.S. Citizen?
	/ /	<input type="checkbox"/> Yes <input type="checkbox"/> No
Current Mailing Address (No P.O. Box Numbers)		
City	State	Zip Code
Current Phone Number	Residence Information	
()	<input type="checkbox"/> Rent <input type="checkbox"/> Own <input type="checkbox"/> Live with relative <input type="checkbox"/> Other	
Previous Address	Years There	
City	State	Zip Code
Name of Nearest Relative Not Living With You		Relationship
Relative's Phone Number		
()		

EMPLOYMENT

Employer	<input type="checkbox"/> Self-employed
	<input type="checkbox"/> Retired
Employer Address	Years Employed
City	State
Zip Code	
Employer Phone Number	Position
()	
Previous Employer	Years Employed
Gross Salary	Other Gross Income*
\$ per (wk/mo/yr)	\$ per (wk/mo/yr)
Source of Other Income	

FOR BANK USE ONLY

ID	EMP #	BANK #	AGENT #	BRANCH #
	4900			6038
AC	CDS	BR	APPSC	FINSC
APPROVED BY	CL	DATE		

BANK AND CREDIT REFERENCES

<input type="checkbox"/> Checking	<input type="checkbox"/> Savings	Bank Name
Credit Reference	Account Number	Balance
1.		\$
Credit Reference	Account Number	Balance
2.		\$

CO-APPLICANT INFORMATION

Co-Applicant Name	
Social Security Number	Date of Birth
	/ /
Gross Salary	Other Gross Income*
\$ per (wk/mo/yr)	\$ per (wk/mo/yr)
Source of Other Income	
Employer	Business Phone Number
	()
Years Employed	Position

*Alimony, child support, or separate maintenance need not be revealed if you do not wish to have it considered as a basis for repaying this obligation.

Signature

PLEASE READ BEFORE SIGNING I have answered the questions in this application fully and truthfully, and all information provided is correct. I authorize you to obtain information to check my credit records and statements made in this application. Please mail all cards, credit agreements (if any), monthly billing statements and all correspondence to the address first listed above. I promise not to use the account until I have received and read a copy of the Agreement, as amended from time to time, governing its use and have agreed to its terms. I understand that if applying for the Gold Card, a Classic card may be issued if, based upon the evaluation of the information furnished by me or by others, I do not qualify for the Gold Card account.

Your Signature	Date
X	/ /
Co-Applicant Signature	Date
X	/ /

CREDIT CARD DISCLOSURES

Annual percentage rate:	16.4%.
Variable rate information:	Your Annual Percentage Rate may vary. The rate is determined by the Prime Rate + 7.9%. Prime Rate means the "Prime Rate" published in the Money Rates section of <i>The Wall Street Journal</i> on the last business day of the month before the beginning of the billing cycle.
Grace period for repayment of the balance for purchases:	You have 25 days on average to repay your entire balance before a finance charge on purchases will be imposed.
Method of computing the balance for purchases:	Avg. daily balance (including new purchases).
Annual fee:	None
Minimum finance charge:	\$.50 (in any month a finance charge is assessed)
Transaction fee for cash advances, and fees for paying late or exceeding the credit limit:	Transaction fee for cash advances: 2% of each new advance (\$2 min., \$20 max.) Late payment fee: \$18 Over-the-credit-limit fee: \$15

Note: You will be establishing credit in your name if you apply as the applicant. If you have not previously established credit in your name or have no annual income, then you must have a co-applicant.

The information about the cost of this card is accurate as of this printing (4/97) and is subject to change after that date. For current rates and terms, please write BANKCARD CENTER, P.O. Box 1545, Memphis, Tennessee 38101-1545. This program is currently available only to permanent residents of the United States.

Academic Excellence

Chapters above the all women's 1996 GPA (per institution)

Alabama Alpha, Birmingham-Southern College
*Alabama Beta, University of Alabama
*Alabama Gamma, Auburn University
*Arizona Alpha, University of Arizona
*Arizona Gamma, Northern Arizona University
*Arkansas Alpha, University of Arkansas
Arkansas Beta, University of Arkansas at Little Rock
California Beta, University of California, Berkeley
California Gamma, University of Southern California
*California Delta, University of California, Los Angeles
California Epsilon, San Diego State University
*California Zeta, University of California, Santa Barbara
*California Eta, University of California, Irvine
California Theta, University of California, Davis
California Iota, California State University, Chico
*California Lambda, University of California, Riverside
*California Mu, Pepperdine University
Colorado Gamma, Colorado State University
*Florida Alpha, Stetson University
*Florida Beta, Florida State University
Florida Delta, University of Florida
Florida Epsilon, University of Central Florida
*Georgia Alpha, University of Georgia
Idaho Alpha, University of Idaho
Illinois Beta-Delta, Knox College
*Illinois Epsilon, Northwestern University
*Illinois Zeta, University of Illinois
Illinois Theta, Bradley University
Illinois Iota, Illinois State University
Indiana Alpha, Franklin College

Indiana Beta, Indiana University
*Indiana Delta, Purdue University
Indiana Epsilon, DePauw University
*Indiana Zeta, Ball State University
Iowa Beta, Simpson College
Iowa Gamma, Iowa State University
*Iowa Zeta, University of Iowa
*Iowa Eta, Drake University
*Kansas Alpha, University of Kansas
*Kansas Beta, Kansas State University
*Kentucky Alpha, University of Louisville
*Kentucky Beta, University of Kentucky
*Louisiana Alpha, Tulane University-Newcomb College
*Louisiana Beta, Louisiana State University
Maine Alpha, University of Maine
Michigan Alpha, Hillsdale College
*Michigan Beta, University of Michigan
Michigan Gamma, Michigan State University
*Mississippi Alpha, University of Southern Mississippi
Mississippi Beta, University of Mississippi
*Missouri Alpha, University of Missouri
*Missouri Gamma, Drury College
Montana Alpha, Montana State University
*Nebraska Beta, University of Nebraska
*Nebraska Gamma, Creighton University
New Mexico Beta, New Mexico State University
*North Carolina Gamma, Wake Forest University
*Ohio Alpha, Ohio University
*Ohio Zeta, Miami University
*Ohio Theta, Bowling Green State University
Oregon Alpha, University of Oregon
Oregon Beta, Oregon State University
Pennsylvania Beta, Bucknell University
Pennsylvania Gamma, Dickinson College
*Pennsylvania Epsilon, Pennsylvania State University
Pennsylvania Zeta, Washington & Jefferson College
*Pennsylvania Eta, Lafayette College
*Pennsylvania Iota, University of Pennsylvania
*South Dakota Alpha, University of South Dakota

*Tennessee Beta, Vanderbilt University
Tennessee Gamma, University of Tennessee
*Tennessee Delta, University of Memphis
*Texas Alpha, University of Texas
*Texas Beta, Southern Methodist University
*Texas Gamma, Texas Tech University
Texas Delta, Texas Christian University
*Texas Epsilon, University of North Texas
*Texas Eta, Texas A & M University
Vermont Beta, University of Vermont
*Virginia Gamma, College of William & Mary
*Virginia Zeta, Virginia Polytechnic Institute & State University
Virginia Eta, University of Richmond
*Virginia Theta, Washington & Lee University
*Washington Beta, Washington State University

** Winter, fall and/or spring semesters/quarters*

Chapters ranking first academically in scholarship on campus 1996

Arkansas Beta, University of Arkansas-Little Rock
*California Theta, University of California, Davis
California Iota, California State University, Chico
*California Lambda, University of California, Riverside
California Mu, Pepperdine University
*Florida Alpha, Stetson University
*Illinois Beta-Delta, Knox College
Iowa Beta, Simpson College
Louisiana Alpha, Tulane University-Newcomb College
Missouri Gamma, Drury College
Nebraska Gamma, Creighton University
New York Epsilon, Rensselaer Polytechnic Institute
Oklahoma Beta, Oklahoma State University
*Oregon Alpha, University of Oregon

Academic Excellence

Oregon Beta, Oregon State University
Pennsylvania Zeta, Washington & Jefferson College
Tennessee Beta, Vanderbilt University
Tennessee Delta, University of Memphis
Texas Epsilon, University of North Texas
Virginia Delta, Old Dominion University
*West Virginia Alpha, West Virginia University

* Winter, fall and/or spring semesters/quarters

Chapters with a 1996 Calendar Year GPA of 3.14 (Pi) and above

Alabama Alpha, Birmingham-Southern College
California Alpha, Stanford University
California Delta, University of California, Los Angeles
California Mu, Pepperdine University
Connecticut Beta, Yale University
Florida Alpha, Stetson University
Illinois Beta-Delta, Knox College
Illinois Epsilon, Northwestern University
Illinois Zeta, University of Illinois
Indiana Gamma, Butler University
Iowa Beta, Simpson College
Iowa Eta, Drake University
Kansas Beta, Kansas State University
Louisiana Alpha, Tulane University-Newcomb College
Michigan Alpha, Hillsdale College
Michigan Beta, University of Michigan
Missouri Beta, Washington University
Missouri Gamma, Drury College
Nebraska Beta, University of Nebraska
Nebraska Gamma, Creighton University
New Jersey Alpha, Princeton University
New York Delta, Cornell University
North Carolina Beta, Duke University
North Carolina Gamma, Wake Forest University
Ohio Zeta, Miami University
Oklahoma Beta, Oklahoma State University
Oregon Gamma, Willamette University

Pennsylvania Beta, Bucknell University
Pennsylvania Epsilon, Pennsylvania State University
Pennsylvania Eta, Lafayette College
Pennsylvania Iota, University of Pennsylvania
Tennessee Beta, Vanderbilt University
Tennessee Delta, University of Memphis
Texas Beta, Southern Methodist University
Virginia Epsilon, University of Virginia
Virginia Eta, University of Richmond
Virginia Theta, Washington & Lee University

Kansas Alpha, University of Kansas
Kentucky Beta, University of Kentucky
Louisiana Beta, Louisiana State University
Missouri Alpha, University of Missouri
New York Alpha, Syracuse University
North Carolina Alpha, University of North Carolina
North Dakota Alpha, University of North Dakota
Ohio Alpha, Ohio University
Ohio Eta, Denison University
Ohio Theta, Bowling Green State University
Ohio Iota, University of Dayton
Oklahoma Alpha, University of Oklahoma

Collegiate Chapter
1996 Calendar Year
GPA: 3.052
Dean's List: 4,904 collegians

Chapters with a 1996 Calendar Year GPA of 3.0 to 3.13

Arkansas Alpha, University of Arkansas
California Beta, University of California, Berkeley
California Gamma, University of Southern California
California Eta, University of California, Irvine
California Theta, University of California, Davis
California Kappa, University of California, San Diego
Florida Beta, Florida State University
Florida Delta, University of Florida
Georgia Alpha, University of Georgia
Indiana Alpha, Franklin College
Indiana Beta, Indiana University
Indiana Epsilon, DePauw University
Iowa Gamma, Iowa State University

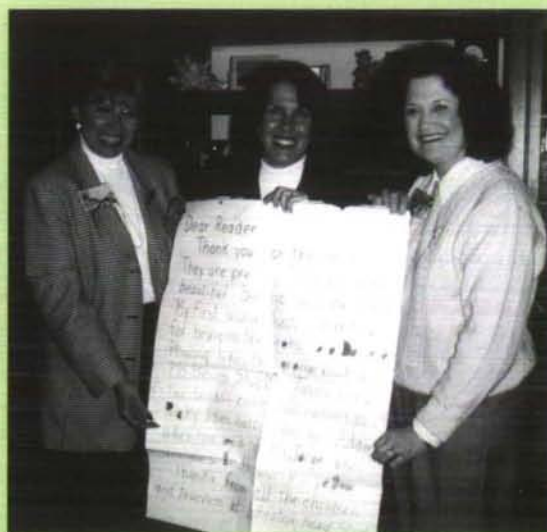
Pennsylvania Gamma, Dickinson College
Pennsylvania Zeta, Washington & Jefferson College
Pennsylvania Theta, Villanova University
South Dakota Alpha, University of South Dakota
Texas Delta, Texas Christian University
Texas Epsilon, University of North Texas
Texas Zeta, Baylor University
Texas Eta, Texas A & M University
Virginia Gamma, College of William & Mary
Virginia Zeta, Virginia Polytechnic Institute & State University
Washington Alpha, University of Washington
Washington Gamma, University of Puget Sound
West Virginia Alpha, West Virginia University

Links to Literacy

Special Thanks

The **GLEN ELLYN-WHEATON, ILLINOIS ALUMNAE CLUB** used its November meeting as a centerpiece for its interest in Links to Literacy. Illinois Zeta Judy Solon Kuhlman, the club's Links to Literacy Chairman, presented opportunities for service in the local Blind Services Association. She recruited volunteers to read one-on-one to the visually impaired and to tape books and newspapers to be widely shared. Illinois

Iota Kerry Miller Halter, a club member and local librarian, then led the group in a lively discussion of "Animal Dreams." The meeting concluded with members purchasing almost \$800 in books from DK Book Look, arranged by club member Patty Allen. Two hundred dollars of the purchase translated into a donation for the local Wheaton Head Start program. The club followed up by donating 26 books to Head Start and received a special thank-you note from the children who received the books.



Alumnae Club President Jacquie Harrel, Links to Literacy Chairman Judy Keehlman and Mu Alumnae Province President Jerilyn Price Simak.

Members of **IOWA GAMMA** contributed to Iowa State University's VEISHEA celebration for the third consecutive year by providing puppet shows to children visiting the campus. Just outside the event's Big Top, Iowa Gammas also provided oral interpretations of children's books that included "Green Eggs and Ham" and "Where the Wild Things Are." "Providing this kind of entertainment not only instills a love of reading in a child, but also takes us all back to our lighthearted memories of childhood," said chapter member Jill Hadsall.

CONNECTICUT BETA continues to support the Pi Beta Phi Children's Library in Yale-New Haven Hospital. Yale University Pi Phis volunteer in the library, as well as augment its collection through the sale of bookplates. Additionally, everyone who attended a chapter social event this year was required to donate a children's book. Individual members provide literacy service through the local Red Cross and through Yale-sponsored programs such as Science and Math Achiever Teams and Tutoring in Elementary Schools.

Members of the **CONROE-HUNTSVILLE-WOODLANDS, TEXAS ALUMNAE CLUB** are on their way to creating a children's library for Memorial Hospital in the Woodlands. A gift of 100 books to the hospital's CEO represents the club's first installment for a room filled with books, games and videos for children to enjoy during their stay in the hospital. "This is just the beginning. We really want to make a difference for the hospital and the community," said Texas Gamma Karen Clifton Northcutt, alumnae club president. "We have a number of ideas for the future including having story time for the children with club members volunteering to read," Karen reported. The idea is modeled after the highly successful Pi Beta Phi Children's Library at Texas Children's Hospital, sponsored by the Houston Alumnae Club now in its 13th year.

The **KATY, TEXAS ALUMNAE CLUB** continues its service to the Katy Medical Center by maintaining the Children's Reading Corner in the hospital's emergency room and the play/reading area in the pediatric wing. Club members also sponsor an annual Holiday Open House to gather books and funds to support their literacy service in the hospital. Recently, the club donated a television and VCR to the pediatric wing.

Members of **TEXAS ZETA** teach Waco, Texas area adults to read through a program called Literacy Mission. Members from Baylor University who participated underwent 14 hours of training to be eligible to tutor. Each member involved has been assigned an adult whom she meets with and tutors once a week.

Links to Literacy

ILLINOIS EPSILONS at Northwestern University worked to strengthen their commitment to literacy this year through multiple Links to Literacy projects. The chapter established a library and a tutoring program for The Reading Room, a reading and writing center for second and third graders in downtown Chicago. Chapter members volunteered 220 hours each quarter to the Adopt-A-School and Teach America programs. Chapter members performed in Evanston's Fairy Tale Trail, a Halloween program that reaches 2,500 Chicago-area children. The chapter also hosted a fireside featuring the Fraternity's Links to Literacy Committee Chairman Jean Egmon and the chapter's seniors doing readings that highlighted famous literature and fraternity heritage. For correctly identifying author and title, new members won the book they identified. Chapter President and former Philanthropy Chairman Sarah Orr explained, "I tried to find activities that we could be involved with over a period of time, something that could continue into the future."

Each member of **MISSISSIPPI BETA** at the University of Mississippi has joined in the Links to Literacy effort by giving one hour or more each semester in providing one-on-one tutoring for local elementary school children. Members also regularly donate books to a number of local literacy-related organizations.

For many years, the **NORTH HILLS ALUMNAE CLUB** of Pittsburgh sought to find a literacy-related service project appropriate for the club's small size. The alumnae club has linked with the Pittsburgh Blind Association to discover a need they could fill in providing

vision screening to pre-schoolers. Alumnae club members received training from the association and purchased a vision screening kit. In their first session, they worked together in groups of four to provide vision screening for 59 children between the ages of three and five. The North Hills alumnae found the project enjoyable and plans to continue serving Pittsburgh pre-schoolers in this way.

TENNESSEE BETAS came together to support their newest Links to Literacy program. Vanderbilt Pi Phis, led by Allison Bonsall and Sarah Delmez, rotated through different modules performing tasks such as cutting out teaching tools, creating vocabulary games and constructing mathematics flashcards. The end products were donated to various Nashville schools in need of assistance and supplies.

A Lasting Link

When the Boca Raton, Florida Alumnae Club posted a request for a Links to Literacy speaker at the Palm Beach County Literacy Coalition, Ontario Alpha Kristen Olson Murtaugh decided to respond. Since she had not been active in Pi Phi since her early college days at the University of Toronto, Kristen thought her Pi Phi membership had lapsed. Still, she was interested in the literacy work of Pi Beta Phi and saw her presentation as a way to reconnect. When Kristen casually mentioned her Pi Phi membership after her presentation, club president, Iowa Gamma Donna Waterous Fleck called Central Office and found out that Kristen was listed as a "lost" Pi Phi. Armed with this new information, Kristen began attending alumnae club meetings and was "found" by Pi Phi again in a big way. Today, Kristen is the Boca Raton Alumnae Club's Links to Literacy Chairman. Under her leadership, club members have collected books for Aid to

Victims of Domestic Violence, sponsored a table at the Palm Beach County Literacy Coalition's annual luncheon, and sponsored a writing contest at a local elementary school, in conjunction with Borders Books and the Palm Beach County Literacy Coalition. Kristen, an Associate Vice President of Florida Atlantic University, graduated with a bachelor's degree in French and Italian and holds a master's degree and a Ph.D. from Harvard in Romance Languages and Literature. Kristen has a Pi Phi mother, a Pi Phi aunt and two Pi Phi sisters. This link to literacy truly represents a lasting link to Pi Beta Phi.

The five student winners of the writing contest hosted by the Boca Raton, Florida Alumnae Club.



Collegiate News

TEXAS DELTAS at Texas Christian University participated in an AIDS Walk-a-thon, attended the Cook Children's Hospital Physical Fitness Fair, and joined Lambda Chi Alpha Fraternity in a fund-raiser for the Salvation Army.

TENNESSEE GAMMAS at the University of Tennessee developed Race to Read, a 5K road race around campus. All proceeds from the race benefit the Smokey Mountain Reading Council. Chapter members also participated in a dance marathon, raising more than \$26,000. The proceeds were donated to a local children's hospital.

TEXAS GAMMAS at Texas Tech University participate in the H.O.S.T. Program, Helping One Student to Succeed, aiding elementary school students with their school work. Texas Gammas also help support an Angel Library in the University Medical Center Children's Hospital.

ILLINOIS ALPHAS at Monmouth College have participated in several philanthropies including sponsoring blood and clothing drives. They also sang Christmas carols at an area nursing home.

NEW YORK ALPHAS at Syracuse University participate in bingo with residents of a local retirement community. Jennifer Hawryschuk volunteers at a local hospital. Christine Zufelt is a Girl Scout Troop leader and runs a women's empowerment program.

NEW MEXICO BETAS at New Mexico State University held a philanthropy car wash. Chapter members also sent both Spanish and English books to a children's shelter in Las Cruces, New Mexico.

NEW JERSEY ALPHA Isabelle Fisher tutors through Companion Tutoring and is the president and founder of Princeton University AIDS Awareness. Laura Wolf, Alison Bartlett and Campbell McKeller are active in the Big Brother/Big Sister program. Estella Villarreal volunteers her time in the English-as-a-second language program for adults. Lucie Kantrow is the project director of "Trenton After School." Dana Deaton is project director of the Young Scholar's Institute, an inner-city tutorial facility. Kerry Jo Lee is the chairman of the Princeton University service project, "Your Future is Our Future," a motivational program organized for junior high school students.

INDIANA DELTA Aimee Nicholson is a volunteer at the Hanna Community Center. Several chapter members at Purdue University participate in the Big Brother/Big Sister program, Adopt-A-School and Habitat for Humanity. Indiana Delta participated in the Festival of Lights benefitting the Battered Women's Shelter of Lafayette.

WISCONSIN ALPHAS at the University of Wisconsin sponsored a 5-year-old girl through a program called Children International. Through the support of the chapter she received educational enrichment and supportive attention. The chapter held "Bullseye with Pi Phi," a dart tournament, which benefits leukemia research.

KENTUCKY ALPHAS at the University of Louisville held a children's book drive. More than 200 books were collected. Kentucky Alphas also collected items for flood victims in their area. All items were donated to the Red Cross.

NORTH CAROLINA GAMMAS at Wake Forest University held their annual Pi Beta Phi Pancakefest, donating proceeds to the Brian Piccolo Cancer Fund. Erin Wilt volunteers her time to the Big Brother/Big Sister program. Erin Sutika is a tutor for children temporarily removed from their homes. Stephanie Jenkins, Snow Roberts and Amanda Edmunds began a campus blood drive for a drug rehabilitation center.

LOUISIANA BETAS at Louisiana State University participated in the Double Shot Basketball Tournament, raising money for Arrowmont. Chapter members also participated in an annual Christmas card sale, selling cards made by children who are patients at the M.D. Anderson Cancer Center in Houston. Proceeds benefit the pediatric wing of the center.

ARKANSAS BETAS at the University of Arkansas-Little Rock provided aid to area tornado-relief-stations after a series of tornados devastated their area. Chapter members donated food and clothes as well as volunteered their time distributing the goods.

TEXAS EPSILONS at the University of North Texas held "Arrowspike," a volleyball and pool tournament which raises money for Arrowmont. Texas Epsilons also participated in a clothing drive, donating clothes to area shelters.

CALIFORNIA ALPHAS at Stanford University volunteer for Habitat for Humanity. For Valentine's Day chapter members delivered more than 300 cans of Orange Crush as a fund-raiser. Proceeds benefitted a battered women's shelter. Members also tutored at the Green Oaks Elementary School.



ARIZONA BETAS at Arizona State University participated in a clothing drive, collecting items for the underprivileged. Kristina Eliason participated in the Pace Program, tutoring autistic children. Katie Olinger volunteers for the Big Brother/Big Sister program.

KANSAS BETAS at Kansas State University participated in Flint Hills Bread Basket, collecting canned goods for the needy. Kansas Betas also held their annual philanthropic project, "Pi Phi Plunge," a swimming and diving contest.

WISCONSIN DELTAS at Marquette University hosted an Easter egg-dyeing party and egg hunt for St. Aemelian's Boys Home. Philanthropy Chairman Laura Gara coordinated the event.

IOWA GAMMAS Jenny Agnew, Lisa Flint, Heather Plagman and Katie Kass served on the Iowa State University's blood drive committee. The university's blood drives are among the largest student-run blood drives in the nation, bringing in between 1,600 and 2,000 pints. Katherine Gregg was co-chairman of the event.

OHIO ZETAS at Miami University tutor children in Headstart on Saturday mornings. Chapter members also support the Senior Citizen Center in Oxford, hosting special meals and celebrations for residents. Ohio Zetas donated clothing and food to women's shelters and have provided assistance at Oxford's Crisis Center.

TEXAS ALPHAS at the University of Texas will team up with Sigma Alpha Mu Fraternity to host a fund-raiser for Multiple Sclerosis. This year's goal is to raise \$15,000—the same amount that was raised last year.



OKLAHOMA ALPHAS at the University of Oklahoma hosted an annual spaghetti dinner raising money for Links to Literacy. A Pi Phi Soccer Tournament raised money for Arrowmont. Oklahoma Alphas also participated in Adopt-A-School, and donated children's books to a local hospital.

NORTH CAROLINA BETAS held their annual pool tournament at Duke University. The proceeds went to the Durham Soup Kitchen. The chapter sponsored a fund-raiser, selling and delivering bagels. This fund-raiser helps support Arrowmont.

MICHIGAN ALPHAS at Hillsdale College raise money for Arrowmont through the "Orange Crush for Your Crush Sale." Chapter members sell the sodas with an attached message and deliver them. Jennifer Holton and Kristina Klatt participate in CATS, Concerned About Teen Sexuality, an abstinence-based organization which visits schools and youth groups in the area. Chapter members sponsored two underprivileged children during the holiday season, buying them clothes and gift items.

MISSISSIPPI ALPHAS Jennifer Tregre, Sherry Walker and Karen Feldmeyer helped host the Queens Tea at the Welsey Manor Retirement Home. Chapter members are involved in various service-related activities at the University of Southern Mississippi including, volunteering at the Hattiesburg Library and the Christian Service Soup Kitchen, decorating a local pediatric ward for Easter and giving blood at the United Way Blood Drive.



ABOVE LEFT: Florida Deltas Lisa Olson and Kathryn McHenry helped raise money on Easter weekend in Orlando, Florida for the University of Florida Dance Marathon.

ABOVE CENTER: Virginia Zetas at Virginia Polytechnic Institute and State University participate in the Adopt-a-Spot Program to help beautify their community.

ABOVE: Alabama Betas at the University of Alabama Shanna Burtram and Amanda Wright volunteer their time reading the newspaper over the radio for the Radio Reading Service.

COLORADO DELTAS at the Colorado School of Mines participated in a variety of service activities, including Habitat for Humanity and a volleyball tournament benefitting Arrowmont.

MAINE ALPHAS at the University of Maine gathered food for local area shelters by collecting canned goods from the community. Members also aided a local women's shelter by painting, washing windows and performing other cleaning tasks. Maine Alphas sell carnations on Valentine's Day to raise money for Arrowmont.

NEVADA ALPHAS at the University of Nevada offered their services at local flood shelters in Reno and Carson Valley, Nevada. Chapter members also participate in CHUMS, a tutorial program that helps the underprivileged children in the community.

PENNSYLVANIA IOTAS at the University of Pennsylvania held their spring philanthropy, "Strike it up with Pi Beta Phi."

Collegiate News

OHIO ETAS at Denison University sponsored a silent auction on campus to benefit Arrowmont. Chapter members also hosted a supply drive for a local battered women's home.

Members of **CALIFORNIA MU** participated in Pepperdine University's Annual Step Forward Day by cleaning the grounds and building a garden/terrace area at a local elementary school. Krista Orchard served as the coordinator for an after-school tutoring program for local elementary students.

COLORADO GAMMAS at Colorado State University participated in Cans Around the Oval, collecting canned goods for the needy. Chapter members hosted the "Pi Phi Plunge" which included a pizza dinner, a penny drive and aquatic events and races. The philanthropy raised money for cancer research and Arrowmont.

ILLINOIS BETA-DELTA Amy Falasz volunteers at the Galesburg Civic Arts Center and the Field Museum of Natural History. Caroline Burgland volunteers at the HOPE Headstart center. Annisa Diaz-Clark is a volunteer suicide-prevention speaker. Katherine Haennicke works with youths to resolve violent tendencies. Chapter members at Knox College participated in a Pink Ribbon Sale for Breast Cancer Awareness Month, a four-leaf clover sale during exams and a carnival for children at a local day care center.

OHIO THETAS at Bowling Green State University participated in a dance marathon fund-raiser. Chapter members danced for 32 hours to help benefit terminally ill children at the Medical College of Ohio. The university raised more than \$102,000.

OKLAHOMA BETAS at Oklahoma State University decorated a local nursing home for Valentine's Day. Oklahoma Betas also participate in the Read Aloud Program, helping first-graders with their reading skills.

PENNSYLVANIA BETAS at Bucknell University raised funds for the Susquehanna Women in Transition Home for battered women in their community. Pennsylvania Betas held an auction in April, with members donating items to be auctioned. Proceeds benefitted Arrowmont.

ILLINOIS EPSILONS Courtney Barnett, Emi Hibino and Jen Bahm spent nine days doing community service in Jamaica over spring break. The three aided in the construction of homes and churches and provided medical care. Chapter members also participated in Northwestern University's annual dance marathon.

NORTH DAKOTA ALPHA Angela Bakken tutors mentally handicapped women. Chapter members also participated in the Adopt-A-School program. Megan Rene volunteers at a local soup kitchen, while keeping a journal to show how state resources are working to help the homeless. Chapter members also participated in a paper airplane flying contest raising money for the Humane Society of Grand Forks.

WASHINGTON BETAS at Washington State University sponsored a "Pancake Breakfast," to raise money for Habitat for Humanity. Chapter members participated in "Jumped for JDF," jumping on a trampoline 24-hours-a-day for three consecutive days. The proceeds benefitted the Juvenile Diabetes Foundation.

VIRGINIA EPSILONS Jocelyn Diaz, Jacqueline Endriss and Jacqueline White serve as Program Directors at Madison House, a University of Virginia volunteer organization. Jocelyn and Anna-Emily Gaupp participated in an alternative spring break volunteering in Honduras. Sarah Ritchie volunteers for the American Cancer Society.

MISSOURI BETAS at Washington University donated children's books to The Cardinal Glennon Children's Hospital of St. Louis. Missouri Betas latest philanthropic project is a cookbook, "Cook Like An Angel." The money raised will go to the Melissa Gail Aptman scholarship fund, in memory of a chapter member.

ILLINOIS IOTAS Shannon Dunn, Leslie Bleke and Emily Miller served as co-chairmen for the Illinois State University's first Children's Miracle Network Dance Marathon. Chapter members also participate in Partners In Reading, blood drives and a Multiple Sclerosis Walk.

IOWA BETAS at Simpson College participate in a variety of service activities, including tutoring, playing BINGO with senior citizens and cleaning local highways and parks. Through VEADA, Victim Empowerment Against Domestic Abuse, chapter members collect canned goods and participate in fund-raisers.

TEXAS BETAS at Southern Methodist University tutor at the J.W. Ray Elementary School. Chapter members also hosted a Halloween party for inner-city youth and sponsored an all-campus "Spikes for Tikes," volleyball tournament. Texas Betas also held their "Arrowmont Mexican Fiesta Party."



TENNESSEE BETAS hosted an Easter Egg Hunt on their lawn for 55 children from the Charles Davis Foundation for inner-city youth. Chapter members Allison Bonsall, Alexis Harrison and Britton Whitson created an exhibit of Arrowmont's permanent collection to be displayed in the Sarratt Student Center at Vanderbilt University.

NEBRASKA GAMMAS at Creighton University held "Paddle for Pi Phi," a rubber duck race for reading. All proceeds support the Omaha Public Library Foundation's project, Kids Connection.

PENNSYLVANIA GAMMAS at Dickinson College helped raise money for the United Way. Chapter members participated in the annual run for leukemia and held "Spike Cancer," an annual volleyball game which raises money for the American Cancer Society.

SOUTH DAKOTA ALPHAS at the University of South Dakota held a bookdrive, donating books to a local children's hospital. Chapter members also participated in a highway clean-up program.

NEW YORK EPSILONS at Rensselaer Polytechnic Institute co-sponsored a fund-raiser to support the Children's Miracle Network.

INDIANA EPSILONS at DePauw University were part of the largest women's state basketball tournament for Special Olympians. Twelve members of the Delaware County Blue Jays stayed in the chapter house and were cheered on by the members. Indiana Epsilon also hosted a pizza party and movie night for the athletes.



IDAHO ALPHAS at the University of Idaho participated in a philanthropy serving as crossing guards at an area intersection. Chapter members also participated in a course to become certified in CPR.

VIRGINIA DELTAS participated in a softball marathon at old Dominion University raising money for Operation Smile. More than \$5,000 was raised to benefit children with facial deformities. Chapter members have also participated in AIDS outreach, cooking dinner for AIDS patients.

MISSISSIPPI BETAS at the University of Mississippi held their annual fundraiser, King of Hearts, in February. Laura Hargraves organized the event.

CALIFORNIA ETAS held their first "Arrowdaze Pool Tournament" at the University of California, Irvine. All proceeds were donated to Arrowmont.

TEXAS ETAS at Texas A & M University donated books to a shelter for abused children. Chapter members also participated in a training session to learn how to assist abused children so they can help these children during a weekly art and photography class.

NORTH CAROLINA ALPHAS at the University of North Carolina participated in Habitat for Humanity. North Carolina Alphas committed to raising \$45,000 towards building a house and providing laborers for its construction.

INDIANA ALPHAS at Franklin College participated in the Cropwalk, raising money to end hunger. Chapter members also donated toys to the children in Riley Hospital and took part in a campus clean-up and a community tree-planting.



ABOVE LEFT: Arizona Gamma Johanna Moss and Philanthropy Chairman Kristine Falk at a fund-raiser at Northern Arizona University.

ABOVE CENTER: Missouri Alphas participated in the first Dance Marathon at the University of Missouri. They raised money for the Children's Miracle Network by dancing for 24 hours straight.

ABOVE: Ohio Alphas donated Christmas presents for three local underprivileged families in Athens.

INDIANA BETAS received the Philanthropy Award at Indiana University. Chapter members held "Arrowgames," hosting field activities and relay games to raise money for Arrowmont. Indiana Betas also held a Mother-Daughter Auction, donating the proceeds to the Make-A-Wish Foundation. Chapter members also purchased cement blocks to aid in the construction of an orphanage in Haiti.

WASHINGTON GAMMAS at the University of Puget Sound collected canned goods for a local food bank. Chapter members also hosted a clothing drive, donating unwanted clothes to various charities such as the Salvation Army and Goodwill.

ONTARIO GAMMAS at the University of Guelph volunteer at a local food bank sorting and delivering food to the needy. Laura Shantz and Casandra Russell volunteer at local schools. Jennifer Thatcher and Tamara Reeve participate in Big Brother/Big Sister program.



INDIANA ZETAS support organizations, including A Better Way Women's Shelter, Special Olympics and Habitat for Humanity. Chapter members also participated in "The Festival of Trees," stringing lights on trees as part of Muncie, Indiana's downtown holiday celebration.

CALIFORNIA BETAS at the University of California, Berkeley made holiday cards for the elderly and decorated cookies for children's organizations. Chapter members donated books to different children's homes and organizations in the area and translated popular stories into Spanish for several homemade children's books.

ONTARIO ALPHAS at the University of Toronto held a toy and food drive over the holiday season. Chapter members raised money for a local charity, Women in Transition. Ontario Alphas held a bake sale on campus, donating proceeds to a child and adult literacy program. Chapter members sponsor a child in a third-world country through World Vision.

CALIFORNIA THETAS at the University of California, Davis organize a haunted house each Halloween for the children of Yolo county. Chapter members also collected food and presents and donated them to needy families during the holiday season.

MONTANA ALPHAS at the University of Montana volunteer at the Eagle Mount Center to work with those who have mental as well as physical disabilities. Chapter members assist with teaching swimming exercises and other recreation activities. The chapter also participates in an "Angels For Alzheimer's" fund-raiser.



ILLINOIS THETAS at Bradley University participated in the annual Jaycees Haunted House in Peoria, Illinois. Each year chapter members participate in the event to support the Peoria City Organization to help keep kids off the street. Chapter members also tutor children through the Adopt-A-School program.

ARKANSAS ALPHAS at the University of Arkansas, Fayetteville hold an annual spaghetti dinner to raise money for Arrowmont. Chapter members cleaned a local city park and helped support a local women's shelter by redecorating one of the shelter's rooms. Chapter members also volunteer their time at a local school for underdeveloped children.

NEW YORK DELTAS at Cornell University volunteer at the local Salvation Army, preparing and serving food to the less fortunate.

IOWA ZETAS at the University of Iowa raised money for the Crohn's and Colitis Foundation of America, through a bowl-a-thon fund-raiser. Chapter members also participated in the university's dance marathon.

MISSOURI GAMMAS at Drury College volunteer their time in fund-raisers, including Into the Streets, Bell Ringing, AIDS Project of the Ozarks and the Adopt-A-Street program.

WEST VIRGINIA ALPHAS held their annual bowl-a-thon at West Virginia University. Chapter members Jill Sieracki and Katherine Snodgrass are both members of Alpha Phi Omega community service fraternity. Crystal Shue volunteers at Stepping Stones, tutoring high school children.



ABOVE LEFT: Michigan Gammas organized their first Broomball Philanthropy Tournament at Michigan State University.

ABOVE CENTER: Oregon Gammas from Willamette University Sarah Higgins, AAC member Carol Kurdy Hawley, Barbra Boyen, Logan Wood and Amy Hicks volunteered at the Salem Diabetes Walk by handing out fruit and water to participants.

ABOVE: Kansas Alphas participated in Rock Chalk Revue at the University of Kansas. The university raised more than \$30,000 for the United Way. Kansas Alphas received the most charitable award with 29.7 community service hours per person.

INDIANA GAMMAS at Butler University tutor and assist with after-school care for the East Tenth Street United Methodist Children and Youth Center. Chapter members also held a "Swing into Spring" fund-raiser, swinging on swing sets for 72 hours to raise money for the American Cancer Society.

FLORIDA ALPHAS at Stetson University participated in a local river clean-up effort. Chapter members also work with local underprivileged school children.

Rush Information Form (RIF)

(To be used by alumnae members only)

Name of Rushee _____ Attending _____ College _____

Home Address _____
Street City State Zip

Year in College: Freshman Sophomore Junior Senior

If transfer student: College attended _____ College GPA _____

High School attended _____
Name City State Zip

Class Size _____ Rank _____ GPA _____ SAT/ACT (if known) _____

Parent or Guardian _____

Pi Beta Phi Relatives _____
(sister, mother, grandmother)

Other Greek Affiliated Relatives _____

Please check ONE of the following:

- Wish to highly recommend Wish to recommend

Please check ONE of the following:

- Known personally by an alumna (if so, how long?) _____
 Only factual information included. Source of information _____
 Other _____

Signed _____
Individual Pi Beta Phi Alumna

Address _____
Street City State Zip

Telephone _____ Date _____
Area Code Number

LIST SCHOOL AND COMMUNITY ACTIVITIES AND HONORS: (Attach another sheet if needed.)
Comment on special interests, talents, leadership qualities, personality.



Directions

Where friendships grow

Pi Beta Phi's Mentoring & Networking Program

A Guide for Networking Night

Information provided by the Bellevue-Eastside, Washington Alumnae Club.

What is Networking Night?

It is an opportunity for Pi Beta Phi alumnae to share their professional experiences with undergraduates. During this event, alumnae and collegians have casual conversations about life after graduation. They discuss everything from how to get experience for a particular profession to what to expect on a daily basis from a job.

What is Done at Networking Night?

Typically, the program begins with a speaker. An example would be a Pi Phi who works in human resources or for a job placement organization. A program regarding resume writing and job interviewing tips is appropriate. Handouts supporting the program, such as sample resumes or questions commonly asked in job interviews may be useful.

Once the speaker has completed her portion of the program, the remainder of Networking Night can be more informal. One option is to have alumnae grouped at tables according to their profession. Collegians are able to speak to those whose careers match their interests. Nametags for each alumna with her name, chapter, degree and current job are helpful.

What Materials do we Need for Networking Night?

Have a display table with handouts for the collegians. Alumnae can bring brochures and business cards from their companies. There should also be applications for "Directions," Pi Phi's Mentoring and Networking Program.

How do we Know if Networking Night is a Success?

Naturally any event that brings alumnae and collegians together is a success, but how can you plan for next year's Networking Night? Before everyone goes home, make sure each participant fills out a survey to help evaluate the evening.

Job Fair

The Chicago Windy City and Arlington Heights, Illinois Alumnae Clubs sponsored a Job Fair at the Illinois Epsilon Chapter House at Northwestern University. Topics discussed included resume and interview techniques, as well as alumnae club opportunities and the Directions program. Eight fields of career interest were decided in advance and were set up at various tables. Alumnae were stationed at each table where collegians could talk to them one on one or in small groups.

Career Networking

In March, the Washington, D.C. Alumnae Club hosted a career networking meeting for its Downtown Junior Club. Recognizing the need for Pi Phis to help one another as they further their careers, the club hosted a meeting with featured speaker, Mr. Roger Whyte, President of The Whyte Group Executive Search Consultants and husband of club co-president Deborah McCarthy Whyte, Maryland Beta. The group talked about issues including, how to best market your experiences and talents, how to make a career change and whether advanced education degrees are necessary to further one's career. Following the formal presentation, Pi Phis enjoyed networking with one another and identifying sisters who could serve as mentors.



Directions

Where friendships grow

Pi Beta Phi's Mentoring & Networking Program

Name: _____ Maiden Name: _____

Home Address: _____

City/State/Zip: _____

Phone: (home) _____ (work) _____

Fax: _____ e-mail: _____

Chapter: _____ Year of Initiation: _____

Check One and complete information below:

_____ I would like to help other Pi Phis. Please add my name, mentoring information and career cluster (if appropriate) to the program. I understand that this information may be released to any Pi Phi who requests the information.

_____ Help! I am entering or re-entering the job market, and/or moving to a new community. I would like some mentoring information from Pi Phi alumnae. Enclosed is my **\$5.00 check payable to Pi Beta Phi** for which I may request up to three locations.

CHECK APPROPRIATE MENTORING CATEGORY:

Career

City/Community Information

(If career, complete occupational cluster information below.)

City: _____ Closest metropolitan area: _____

Occupation Cluster(s): _____ (See listing below)

Occupation Title/Description: _____

OCCUPATION CLUSTERS

- | | |
|---|---|
| A. Agriculture & Environment
Conservation, Forestry, Horticulture, Landscaping, Recycling, Wildlife | J. Health & Medicine
Dentistry, Nursing, Pharmacy, Physician, Psychology, Therapists, Veterinary, Dietitian, Optometry, Pathology, Dermatology, Sales, Consultant |
| B. Architecture, Engineering & Design
Drafting, Graphic and Interior Design, Surveyor, All Engineers, Architect | K. Home Economics & Family Consumer Science
Child and Daycare Service, Family Counseling, Food Marketing and Development, Homemaker |
| C. Communications
Advertising, Broadcasting, Journalism, Media, Public Relations, Publishing, Reporting, Writing | L. Hospitality
Catering, Chef, Conventions, Food Services, Hotel, Restaurant |
| D. Computer & Science
All Computer/Technical Support, Data Processing, All Scientists | M. Legal & Law Enforcement
Attorney, Court Reporting, Judicial, Paralegal, Police |
| E. Construction & Trades
Automotive, Electrical, Mechanical, Painting, Plumbing, Textile | N. Management & Administration
Administrative Support, Clerical, Human Resources, Personnel, Public Relations, Company President |
| F. Cultural & Arts
Crafts, Entertainment, Film, Museums, Music, Performing, Photography, Theater, Actress | O. Manufacturing
Equipment Maintenance, Factory Operation, Plant Management |
| G. Education & Counseling
All Levels of Education, Employment Services, Librarian, Social Work, Administration, Counselor | P. Recreation, Leisure & Travel
Airlines, Fitness Sports, Tourism, Public Relations |
| H. Finance
Accounting, Banking, Consulting, Economist, Investments, Math, Statistics, Auditor | Q. Retail
Consumer, Design, Fashion, Merchandising, Manager |
| I. Government, Non-profit & Religion
Military, Ministry, Public & Social Services, Volunteer, FBI, Legislative Aide, Fund-Raising, Translator | R. Sales & Marketing
Buyer, Import/Export, Insurance, Real Estate, Representative, Research, Wholesale, Telemarketing, Marketing, Manager, Sales |
| | S. Transportation & Moving
Shipping & Freight, Trucking |

Return to: Directions Program

Pi Beta Phi Central Office, 7730 Carondelet, Suite 333, St. Louis, MO 63105

Fraternity Directory

Former Grand Presidents

- ELIZABETH TURNER ORR** - Oregon Alpha, 9450 SW Brentwood Place, Tigard, OR 97224
JEAN WIRTHS SCOTT - Pennsylvania Beta, 1186 Cedarwood Drive, Moraga, CA 94556
CAROLYN HELMAN LICHTENBERG - Ohio Alpha, 1064 Westbrooke Way, Atlanta, GA 30319
JO ANN MINOR RODERICK - Oklahoma Beta, 701 Greystone, Stillwater, OK 74074

Officers Emeriti

- GRAND PRESIDENT EMERITUS** - Alice Weber Johnson, Missouri Beta, Box 337, Carmel Valley, CA 93924
GRAND TREASURER EMERITUS - Orpha O'Rourke Coenen, Indiana Delta, PO Box 8, Little Chute, WI 54140

Grand Council

- GRAND PRESIDENT** - Beth van Maanen Beatty, Texas Gamma, 1506 San Sebastian Lane, Nassau Bay, TX 77058
GRAND VICE PRESIDENT OF COLLEGIANS - Sarah Ruth Mullis, South Carolina Alpha, 10 Kings Tavern Place, Atlanta, GA 30318
GRAND VICE PRESIDENT OF ALUMNAE - Carolyn Pavletich Lesh, Texas Delta, #1 Forest Park, Richardson, TX 75080
GRAND VICE PRESIDENT OF FINANCE - Lou Ann Montgomery Carter, Oklahoma Alpha, Box 3925, 8 Barberry Lane, Wilmington, DE 19807
GRAND VICE PRESIDENT OF MEMBERSHIP - Carol Inge Warren, North Carolina Beta, 5439 Cascade Drive, Lisle, IL 60532
GRAND VICE PRESIDENT OF PHILANTHROPIES - Betty Blades Lofton, Indiana Gamma, 9060 Pickwick Drive, Indianapolis, IN 46260
GRAND VICE PRESIDENT OF PROGRAM DEVELOPMENT - Maurine Hager Jones, Montana Alpha, 14 Dogwood Court, Walnut Creek, CA 94598

Directors

- DIRECTOR OF ACADEMICS** - Kathleen Anderson Witte, Nebraska Beta, 2011 Old Mill Road, Findlay, OH 45840
DIRECTOR OF ALUMNAE ADVISORY COMMITTEES - Carolyn Cromb Brada, Kansas Alpha, 52 Mission Road, Wichita, KS 67207
DIRECTOR OF ALUMNAE COMMUNICATIONS - Emily Russell Tarr, Texas Beta, 1439 Sugar Creek Boulevard, Sugar Land, TX 77478

- DIRECTOR OF ALUMNAE EXTENSION** - Mary Lu Pendergrast Meixell, Tennessee Delta, 4926 Wheatstone Drive, Fairfax, VA 22032
DIRECTOR OF ALUMNAE PROGRAMMING - Lois Huston Ross, Indiana Delta, 4531 Royal Ridge Way, Dayton, OH 45429
DIRECTOR OF CHAPTER HOUSE CORPORATIONS - Julie Geiger Shannon, Kentucky Beta, 29 Lenape Trail, Chatham, NJ 07928
DIRECTOR OF CHAPTER SUPPORT, REGION I - Joanne MaGirl Arnold, Texas Beta, 32640 Spinnaker Drive, Avon Lake, OH 44012
DIRECTOR OF CHAPTER SUPPORT, REGION II - Linda Burrows Priest, Oklahoma Beta, 203 East 11th Street, Pawhuska, OK 74056
DIRECTOR OF CHAPTER SUPPORT, REGION III - Joan Scholes Hill, Kansas Alpha, 3772 Wonderland Hill, Boulder, CO 80304
DIRECTOR OF COLLEGIATE EXTENSION - Jane Landreth Russell, Arizona Alpha, 5711 N 73rd Place, Scottsdale, AZ 85250
DIRECTOR OF COLLEGIATE PROGRAMMING - Fran DeSimone Becque, New York Alpha, 2608 Kent Drive, Carbondale, IL 62901
DIRECTOR OF FINANCE - Karen Consalus Price, Missouri Alpha, 1504 Kingstream Circle, Herndon, VA 20170
DIRECTOR OF FRATERNITY EDUCATION - Ruth Neel Noble, California Delta, 2564 Via Carrillo, Palos Verdes Estates, CA 90274
DIRECTOR OF MEMBERSHIP - Kay Knittle Brock, Colorado Alpha, 5459 West 85th Terrace, Shawnee Mission, KS 66207
DIRECTOR OF RUSH - Melissa Dates Schmidt, Ohio Alpha, 1413 Kingstream Drive, Herndon, VA 20170

Appointed Officers

- NATIONAL PANHELLENIC CONFERENCE DELEGATE** - Jean Wirths Scott, Pennsylvania Beta, 1186 Cedarwood Drive, Moraga, CA 94556
ANNIVERSARY CELEBRATION COORDINATOR - Alison Hennig Moore, Florida Gamma, 2525 Sycamore, Colorado Springs, CO 80906
CONVENTION BOUTIQUE CHAIRMAN - Nancy Fogle Pollard, Arkansas Beta, 120 Hume Lane, Bakersfield, CA 93309
CONVENTION COORDINATOR - Barbara Ehni Van Luven, Indiana Epsilon, 2 Portland Court, St. Louis, MO 63108
CONVENTION SITE COORDINATOR - Martha Sherman Malsbary, Indiana Delta, 10014 Craig Drive, Overland Park, KS 66212

- DIRECTIONS PROGRAM CHAIRMAN** - Kay Knittle Brock, Colorado Alpha, 5459 West 85th Terrace, Shawnee Mission, KS 66207
ELECTIONS COORDINATOR - Jerelyn Wright Biehl, California Delta, 1833 Tusrin Street, San Diego, CA 92106
FRATERNITY HISTORIAN - Marilyn Simpson Ford, Nebraska Beta, 268 Underwood Drive NW, Atlanta, GA 30328
GRADUATE CONSULTANT COORDINATOR - Jo Ann Minor Roderick, Oklahoma Beta, 701 Greystone, Stillwater, OK 74074
MUSIC CHAIRMAN - Suzanne Chapman Lawson, Oklahoma Beta, 44 Rockinghorse Road, Rancho Palos Verde, CA 90275
ASSISTANT MUSIC CHAIRMAN - Jan Kinnune Hillesland, Washington Alpha, PO Box 627, Grapeview, WA 98546
PARLIAMENTARIAN - Janice Shrader Falk, Nebraska Beta, RR 1, Box 10, Fort Calhoun, NE 68023
RISK MANAGEMENT OFFICER - Michelle Murrell Goseco, California Eta, 8 Sepulveda, Rancho Santa Margarita, CA 92688
SUPERVISOR OF CHAPTER HISTORIES - Penny Heyl Moss, Kansas Beta, 14024 Pinnacle Drive, Wichita, KS 67230

Special Officers

- TRAVELING GRADUATE CONSULTANTS** - Rebekah Heiser, Connecticut Beta; Stacy Lantis, Indiana Alpha; Jessica Manning, Washington Beta; Caroline Plauché, Georgia Alpha; Amy Weaver, Texas Eta; Bryn Wilkinson, Iowa Zeta
RESIDENT GRADUATE CONSULTANTS - Jean Hanna, Pennsylvania Iota; Carrie Joyce, Missouri Alpha; Jennifer Plagman, Iowa Gamma

Pi Beta Phi Central Office

7730 Carondelet, Suite 333, St. Louis,
MO 63105 (314) 727-7338;
FAX: (314) 727-8049

EXECUTIVE DIRECTOR - Renée Ross Mercer,
Iowa Zeta

CONTROLLER - Mary Mitch Mullendore,
Illinois Zeta

ARROW EDITOR/COMMUNICATIONS COORDINATOR - Elizabeth Gilkison Cannon,
Missouri Alpha

PI PHI EXPRESS - (800) 322-1867

Fraternity Directory

Fraternity Insurance Representatives

PROPERTY AND LIABILITY INSURANCE - Conseco Risk Management, Inc., PO Box 1910, Carmel, IN 46032

GROUP HOSPITAL INDEMNITY PLAN INSURANCE - Insurance Administrators Co., 216 N 11th Street, Lincoln, NE 68508

Board of Trustee Funds

CHAIRMAN - Lou Ann Montgomery Carter, Oklahoma Alpha, Box 3925, 8 Barberry Lane, Wilmington, DE 19807

Arrowmont

Arrowmont School of Arts and Crafts - Box 567, Gatlinburg, TN 37738 (423) 436-5860

DIRECTOR, ARROWMONT SCHOOL OF ARTS AND CRAFTS - Sandra Blain

SETTLEMENT SCHOOL BOARD OF GOVERNORS CHAIRMAN - Dawn Sheeler Ford, 1936 Stonebrook Drive, Knoxville, TN 37923

Holt House

402 East 1st Avenue, Monmouth, IL 61462

HOURS: By appointment only.

Pi Beta Phi Foundation

7730 Carondelet, Suite 333, St. Louis, MO 63105 (314) 727-7338; FAX: (314) 727-1255

BOARD OF TRUSTEES

PRESIDENT - Adrienne Hiscox Mitchell, Kansas Alpha, 165 Redwood Drive, Hillsborough, CA 94010

DIRECTOR - Lynn M. Raney, Pi Beta Phi Foundation, 7730 Carondelet, Suite 333, St. Louis, MO 63105

Foundation Committees

ALUMNAE SCHOLARSHIP COMMITTEE

CHAIRMAN - Anne Chestnut Bartlett, 282 Curtis Point Drive, Mantoloking, NJ 08738

EMMA HARPER TURNER FUND COMMITTEE

CHAIRMAN - Anne Busch Hills, 440 Meadow View Drive, La Canada, CA 91011

GRADUATE FELLOWSHIP COMMITTEE

CHAIRMAN - Barbara Weihmiller Angotti, 5540 East 75th Street, Indianapolis, IN 46250

UNDERGRADUATE SCHOLARSHIP COMMITTEE

CHAIRMAN - Mary Anne Riddick Cesario, 8850 Oakmont Drive, Santa Rosa, CA 95409

Fraternity Committees

CANADIAN PHILANTHROPIES COMMITTEE

CHAIRMAN - Helen Ford Perkins, 986 Beachview Drive, North Vancouver, BC CANADA V7G 1R1

CAROLYN HELMAN LICHTENBERG CREST AWARD

COMMITTEE CHAIRMAN - Carolyn Pavletich Lesh, #1 Forest Park, Richardson, TX 75080

CONVENTION COMMITTEE CHAIRMAN

- Carolyn Helman Lichtenberg, 1064 Westbrooke Way, Atlanta, GA 30319

HOLT HOUSE COMMITTEE CHAIRMAN

- Alice Gill Goshorn, 4921 East State Road 252, Franklin, IN 46131

LEGISLATIVE COMMITTEE CHAIRMAN

- Dee Rippetoe Richardson, 2801 Camelot Drive, Oklahoma City, OK 73120

LINKS TO LITERACY COMMITTEE CHAIRMAN

- Jean Egmon, 1625 Sheridan Road #203, Wilmette, IL 60091

NOMINATING COMMITTEE CHAIRMAN

- Ellie Moore Merrick, 3200 Poinsettia Avenue, Manhattan Beach, CA 90266

STUDENT LOANS COMMITTEE CHAIRMAN

- Margaret Liebers Lovelette, 2038 Butternut Lane, Northbrook, IL 60062

Pi Beta Phi Foundation Recognition and Memorial Gifts

Gifts may be made to the Pi Beta Phi Foundation in honor or remembrance of any individual or group. If an alumnae club or collegiate chapter is making the gift, please indicate as such and include the president's name and address.

Enclosed is my/our gift of \$ _____



In recognition/memory of (circle one):

Name (first, maiden, last): _____

Chapter/year of initiation: _____

If recognition, occasion if appropriate (birthday, anniversary, special achievement, etc.): _____

If memorial, date of death: _____

Please notify:

Name: _____

Address: _____

City/State/Zip: _____

Donor:

Name: _____

Address: _____

City/State/Zip: _____

Please make checks payable to the Pi Beta Phi Foundation. Gifts to the Foundation are tax-deductible to the full extent of the law. Please mail this form with your gift to: Pi Beta Phi Foundation, 7730 Carondelet, Suite 333, St. Louis, MO 63105



MARILYN LESLIE SLY
Maine Alpha
New Haven,
Connecticut
Alpha Province

Evelyn Peters Kyle Award

Originally presented in 1971 by the Alumnae Directors and the Alumnae Province Presidents, this annual award is for club service. The intent of this award is to honor an alumna for exceptional service to an alumnae club by performing those duties often unrecognized; for example, service on telephone committees, arrangements, hospitality, etc. Judging criteria include promoting the ideals of Pi Beta Phi, reliability, initiative, consistent contribution to the well-being of the club, unstinting loyalty.



PATRICIA ALLISON GERVEY
Texas Gamma
Westchester County,
New York
Beta Province



MARY JANE CHANDLER SEAMANS
Illinois Zeta
Pittsburgh-South Hills,
Pennsylvania
Gamma Province



MONICA DAVIS SKIDMORE
Alabama Alpha
Atlanta, Georgia
Epsilon Province



JEAN CLARK AUCHTERLONIE
Colorado Alpha
North Woodward,
Michigan
Theta Province



BETTY DEAN CALHOUN
North Carolina Alpha
Cleveland East, Ohio
Iota Province



REBECCA GRIFFITH
Alabama Beta
Nashville, Tennessee
Kappa Province



SHIRLEY LOCKER STURM
Indiana Zeta
Indianapolis-South
Suburban, Indianapolis
Lambda Province



HELEN PARKES SPEIR
Illinois Zeta
Chicago West
Suburban, Illinois
Mu Province



DOROTHY ALLEN COUTANT
Illinois Eta
Decatur, Illinois
Nu Province



SUSAN FEATHERSTON COATES
Tennessee Delta
Monroe, Louisiana
Xi Province



MARIE MORAN WOELKE
Iowa Gamma
Milwaukee, Wisconsin
Omicron Province



CAROLYN LUEDER MAY
Iowa Gamma
Omaha, Nebraska
Pi Province



PAMELA MORTON LESTER
Kansas Beta
Wichita, Kansas
Rho Province



ROBERTA CHISHOLM HEFLEY
Mississippi Alpha
Memphis, Tennessee
Sigma Province



MARGARET RORSCHACH KRUMME
Indiana Epsilon
Tulsa, Oklahoma
Tau Province



SARAH DUNN FISHER
West Virginia Alpha
Richardson-Plano, Texas
Upsilon Province



ROSEMARY BLOEDORN LONG
Colorado Beta
Cypress Creek-Northwest
Houston, Texas
Phi Province



LOUEMMA BRECKENRIDGE BROOKEY
Oklahoma Beta
Las Cruces, New Mexico
Chi Province



BARBARA WEATHERWAX MOHAR
Colorado Beta
Jefferson County, Colorado
Psi Province



JACKLIN SIEGER FOUSHEE
California Epsilon
Bellevue-Eastside,
Washington
Omega Province



KATHRYN ULRICH WALKER
Oregon Alpha
Ventura County, California
Alpha-Delta Province



BEVERLY BURHANS HORTON
Nevada Alpha
Reno, Nevada
Alpha-Gamma Province



CHARLOTTE HASKELL HUBER
Iowa Beta
Riverside, California
Alpha-Epsilon Province

NOT PICTURED:
ELIZABETH FISHER BANG
Virginia Alpha
Baltimore, Maryland
Delta Province

KAYE KOON BILLINGS
Kansas Beta
Brevard County, Florida
Zeta Province

CAROLYN HOFFMAN GILBERT
Ohio Alpha
Sandhills of North Carolina
Epsilon Province

SUSAN PERRY BROCKWAY
Florida Alpha
Boca Raton, Florida
Eta Province



LAURIE ANN DAILEY
Connecticut Alpha
Manchester Area,
Connecticut
Alpha Province

Emma Harper Turner Award

Announced at the 1993 Convention in recognition of the establishment of the Alumnae Department in 1893, this award honors an alumna for exceptional leadership at the local club level. Serving as an effective alumnae club officer, aiding in recruiting and maintaining dues-paying members, acting as a role model in promoting Pi Phi loyalty, displaying creativity and flexibility in programming, encouraging long-range planning in her club, and broadening the scope of local alumnae by promoting the international aspects of the Fraternity are criteria for the award.



VIRGINIA BANER DEWEY
New York Alpha
Syracuse, New York
Beta Province



AMY SONKA KASZNEL
California Epsilon
Philadelphia-Main Line,
Pennsylvania
Gamma Province



MARILYN SMITH MERTUS
Michigan Gamma
Durham-Orange County,
North Carolina
Epsilon Province



MARCIA OPDYKE CRAMER
Michigan Alpha
North Woodward,
Michigan
Theta Province



PATRICIA PASCH LEIMER
Ohio Epsilon
Dayton, Ohio
Iota Province



BETTY AMIDON KESMODEL
Florida Alpha
Birmingham, Alabama
Kappa Province



PATRICIA ANDREWS COLE
Indiana Alpha
Indianapolis-South
Suburban, Indiana
Lambda Province



MARY MARGARET BOWER
Indiana Gamma
Chicago West
Suburban, Illinois
Mu Province



BARBARA HALL HEELY
Illinois Eta
Belleville Area, Illinois
Nu Province



**MARGARET BRADY
MAXWELL**
Louisiana Beta
New Orleans, Louisiana
Xi Province



PATRICIA HUNT JAMES
Wisconsin Alpha
Milwaukee, Wisconsin
Omicron Province



DOLORES CARLSON OWEN
Iowa Gamma
Omaha, Nebraska
Pi Province



ATHELIA SWEET CLINGAN
Kansas Beta
Kansas City, Missouri-
Shawnee Mission, Kansas
Rho Province



BECKY WILLIAMS
WILLIAMS
Arkansas Alpha
Conway, Arkansas
Sigma Province



KAY NORDSTROM ZOOK
Kansas Beta
Tulsa, Oklahoma
Tau Province



PEGGY WRIGHT LAIDLAW
California Gamma
Richardson-Plano, Texas
Upsilon Province



**DONNA COFFMAN
DAWSON**
Oklahoma Beta
Houston, Texas
Phi Province



SHIRLEY DAMON PORTOUW
Oregon Beta
Colorado Springs,
Colorado
Psi Province



**AILEEN AYLSWORTH
WELGAN**
Alberta Alpha
Seattle, Washington
Omega Province



JOYANNE WOLF PAQUETTE
Iowa Gamma
San Mateo County,
California
Alpha-Gamma Province



**BARBARA BEAUMONT
DREIBELBIS**
California Zeta
Central Orange County,
California
Alpha-Delta Province



**COLLEEN ALLEN
ALEXANDER**
Indiana Beta
San Diego, California
Alpha-Epsilon Province

NOT PICTURED:
CATHARINE MCGAULY JESSEN
Alabama Beta
Tidewater of Virginia
Delta Province

JENNIFER BLANTON PELUSO
Florida Epsilon
Orlando-Winter Park, Florida
Zeta Province

MARY ANN CLINTON WASSON
Arkansas Alpha
Southwest Florida
Eta Province

SALLY ANN SACCO
New Mexico Alpha
Albuquerque, New Mexico
Chi Province

Alumnae News

The **LAKE SHORE, ILLINOIS ALUMNAE CLUB** enjoyed their annual angel ornament exchange. In January, Michigan Gamma Shelia Spade taught club members how to turn wooden cigar boxes into beautiful "treasure boxes," by covering them with wrapping paper. In March, the club enjoyed spring golf fashions while benefitting their local philanthropy, a shelter for battered women and children.

OKLAHOMA ALPHA LINDA LAKE YOUNG was recently named president of the University of Oklahoma Association. Linda will preside over all officially sponsored University of Oklahoma Association activities on campus and will represent more than 160,000 University of Oklahoma alumni at off-campus events and activities.

The **SACRAMENTO, CALIFORNIA ALUMNAE PANHELLENIC** awarded California Theta Raci Oriona Christianson the Panhellenic Sister of the Year Award. Oriona is a junior at the University of California, Davis. The honor is awarded to collegiate women who demonstrate academic excellence, a commitment to community service and who promote sorority life.

CALIFORNIA ETA MARIA YOUNG CHANDLER, M.D. and her husband Weston were recently featured in *Life in Medicine* magazine. The couple was featured highlighting how their careers in the healthcare field have evolved. Maria is a physician and is finishing her master's degree in business administration. She is a practicing pediatrician and holds two administrative positions. Maria plans a future in healthcare administration.

For its 1996 Christmas Family Project the **CLEVELAND EAST ALUMNAE CLUB** worked with the Transitional Housing, Inc. organization. This agency provides programs, services and housing to homeless women to aid their efforts in becoming self-supporting.

The **HOUSTON ALUMNAE CLUB'S** Tablescape Adventure fund-raiser was held March 4-5, 1997. The event benefitted the Pi Beta Phi Children's Library at Texas Children's Hospital and the Pi Beta Phi Children's Enrichment Program at the University of Texas M.D. Anderson Cancer Center. The event raised \$50,000.

The **SYRACUSE AREA ALUMNAE CLUB** and the **NEW YORK ALPHA CHAPTER** at Syracuse University held a Cancer Awareness program for the alumnae club and chapter members. Radiologist, Dr. Beverly Spurts from the University Radiology Associates in Syracuse, gave a presentation on cancer prevention.

OHIO ZETA DIANE WETHERILL SCHOOLS is a tutor with the Carteret Literacy Council. She is a former teacher who decided it was time to "give something back" to the community by using her time and talents to help others.

Ninety-one Years of Adventure

COLORADO BETA ISABEL PIFER, 91, has been a high flier all her life. Isabel credits Orville Wright for her love of flying. In 1913 when Isabel was 8-years-old, she met Wright, inventor of the airplane, at one of Wright's flying machine demonstrations in a local cow pasture. What started as an afternoon outing with her father, led to the ride of Isabel's life. Wright invited Isabel to join him in a flight over their mutual hometown of Dayton, Ohio. Isabel says she remembers the flight like it was yesterday right down to how the wind felt in her face while she looked down on the roof tops below.

Isabel has always been adventurous, and has teetered on the cutting edge of life for most of this century. After completing her teacher training at the University of Denver in 1923, where she became a Pi Phi, she

taught in Colorado and along the way, became the amateur women's ski champion of the state. That same year she was featured on a cover of *The ARROW* in recognition of her athletic accomplishment.

After conquering Colorado, Isabel went back to Ohio, graduated from Ohio Wesleyan and later earned a master's degree at Boston University. Over the past 70 years her multi-careers as teacher, college administrator and social worker have taken her to Israel, Egypt, Hong Kong, Ethiopia, India, Nepal, Japan and Boston.

Isabel retired to Cape Cod in the 1970s where she has worked tirelessly for the community. Still independent, she lives in Sandwich, Massachusetts, with her five cats and until just last year was delivering Meals on Wheels to her housebound neighbors.

—WASHINGTON ALPHA
SHIRLEY MILLER EASTMAN

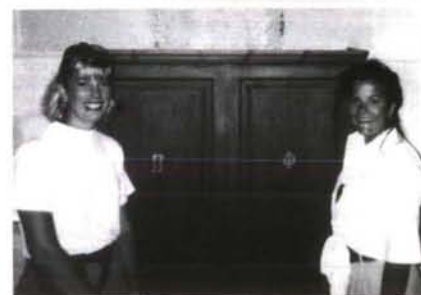
Alumnae News

At the March meeting of the **HUNTSVILLE, ALABAMA ALUMNAE CLUB**, members listened to Cynthia Doubett, a special events coordinator. She offered useful information on different aspects of hosting special events, including details on invitations, menus and decorations.

TEXAS ALPHA SENATOR KAY BAILEY HUTCHISON was honored this year with induction into the 1997 Texas

Women's Hall of Fame. Senator Hutchison has attained the highest levels of achievement in government and community service. The first woman to be elected to the U.S. Senate from Texas, she is a Deputy Majority Whip and serves on the influential Senate Appropriations Committee.

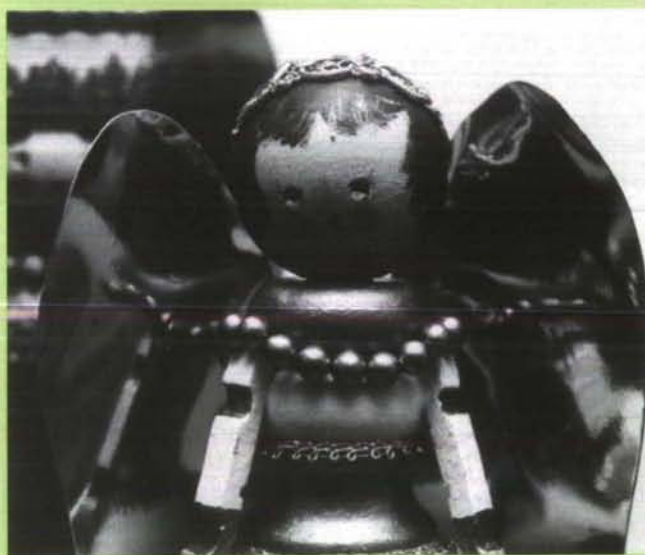
The Texas Women's Hall of Fame ceremonies are a function of the Texas Governor's Commission for women.



ABOVE: The Nashville, Tennessee Alumnae Club's annual Christmas Village earned \$265,000. Nashville Alumnae Club Christmas Village Co-chairmen, Lisa Roes Karpos, Kathy Petrone and Alumnae Club President Ann Gehret McKinney.

CENTER: Louisiana Alpha Carolyn Beutel New with Arkansas Alpha Kathryn Ellis Eason. Carolyn is the president of the Dallas Symphony Orchestra League and Kathryn leads the Symphony's Junior Group.

LOWER: Texas Zetas Diana Dildy and Adrienne Dildy Conrady at a castle in Rhodes, Greece.



chapter house next door to the Pi Beta Phi house at Ohio University. All are hand-painted by Jean in intricate gold details on a cream base. The angels are often embellished

Seventy-five Year Angel

OHIO ALPHA JEAN GIST TREPP was initiated in 1922 and graduated from Ohio University in 1925. Jean has been using her artistic abilities creating angels since 1951. She has made angels, in all sizes, from thread spools, portions of discarded banister spindles and old table legs. At first she gave away her angels, but soon her Chi Omega friends persuaded her to sell her work through their Christmas Boutique held in their

with beads and delicate, lacy trim and their wings are made of variously light, pen-weave scrim, sprayed with gold or from double-sided gold paper. Savvy shoppers began standing in line before the Christmas Boutique doors even opened to buy Jean's newest angel decorations. This year, the 75th anniversary of Jean's Pi Phi initiation, marks her retirement from angel production, but her angels reappear throughout Athens, Ohio every Christmas.

ABOVE: One of the hundreds of angels created by Jean Gist Trepp.



ABOVE LEFT: Teri Clemons McCracken, Kelly Hoyman, Tracy Fagan Olive, Holly White Kuhn, Keli Kinsella, officers of the Denver Colorado Alumnae Club, at their annual Holiday Tea.

ABOVE CENTER: Presidents of the Pi Beta Phi and Kappa Kappa Gamma Atlanta Alumnae Clubs, Nebraska Beta Marilyn Simpson Ford and Arlene Tarrance, at the Atlanta Monmouth Duo—"Tea at the Ritz." This was the first time the Atlanta Alumnae Clubs participated in a Monmouth Duo.

ABOVE: The Reno, Nevada Alumnae Club celebrated Christmas early by making angels. Mary Ralf Levy shared her home, her time and her talent by preparing individual project kits for the 30 members that participated. Participants included Jackie Uhalde Starkweather, Elizabeth Edge Garcia, Susan Starkweather Lani, Jennifer Starkweather Hill, Susan Lombardi, Cindy Buchanan and Linda Vestbie.

The JASON Project



MICHIGAN GAMMA ANNE GOSS BROADDUS will be traveling to Yellowstone National Park as one of six teacher argonauts worldwide to participate in JASON, a global project studying mammal groups. The exploration will be broadcast locally via satellite to Lamphere High School in Madison Heights, Michigan.

Anne learned of the project as a first-year teacher. After taking her class to watch JASON II's Lake Ontario expedition, she immediately

became a project enthusiast. "We couldn't believe what we were seeing live on the big screen. A Remotely Operated Vehicle (ROV) was examining every inch of two perfectly preserved sunken warships from the War of 1812," Anne said. Since seeing her first expedition, Anne a doctorate student in science curriculum and instruction, teaches JASON to her fourth grade class. Anne was able to finish her doctorate with the aid of an Alumnae Continuing Education Scholarship from the Pi Beta Phi Foundation.

The JASON Project, teaches students in grades 4-12 about science and technology through a live, interactive broadcast via a Primary Interactive Network Site (PINS). Michigan's PIN site is located at Lamphere High School and will accommodate more than 25,000 students over a two-week period.



LEFT: The Beaumont, Texas (Nita Hill Stark) Alumnae Club, under the leadership of Kansas Alpha Jana Heilman Elliott, held a successful fall fund-raiser. The alumnae club sold loaves of sweet/sour bread at St. Mark's Chili Supper.



LOWER LEFT: Indiana Beta Stacey McClain Henehan is an automobile auctioneer. She began working for her father, auctioneer Bill McClain, when she was a child, holding up items. She graduated from auction clerk and got her auctioneer's license at 18.

LOUISIANA BETA MARGARET ANDRESS GILBERT of El Dorado, Arkansas joined a team of United States volunteers who taught English in Siedlce, a Polish village located about two hours east of Warsaw. She said the experience provided her with a closer look at the daily life in an emerging democracy. While in Siedlce, Margaret taught basic English language skills to children in local middle schools and adults studying English in college. The service program was sponsored by Global Volunteers, a private, non-profit, nonsectarian organization.

A Lifetime of Quilting and Needlework

COLORADO ALPHA ZELTA

BURROWS REYNOLDS' quilting and needlework has been extraordinarily prolific throughout her lifetime. As a small child, Zelta remembers stitching on a quilt made by her great-grandmother. Since that time she has rarely been without a project: quilting and needleworking with her grandmother, mother, children and grandchildren.

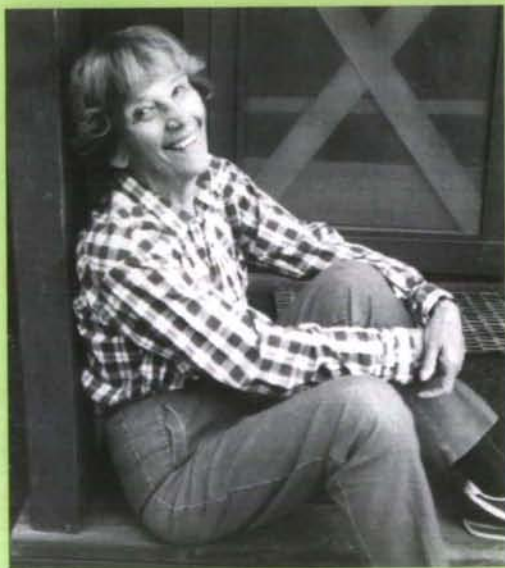
Zelta's quilting frames traveled across the prairies of Kansas on wagon trains which brought her for-bearers to the Heartland after the Civil War. Zelta began making her signature story quilts when her children were young and her husband

would travel for business. She could neatly tuck away one or two blocks to design and stitch at PTA meetings or while listening to her children practice the piano. She would then piece together the blocks to background fabric.

When all the blocks were completed she would bring together family members and friends to "tie off" her handwork in the antique quilting frames. The Reynolds children recall everyone taking turns stitching and tying quilts. Zelta's needlepoint art evolved as her children grew up and she began to accompany her husband, Jim, on business trips all over the world. Paints were too messy to move around, according to Zelta. "So, I'd just stitch in that flower between here and Melbourne—and worry about the dragon's head when we were en route to Sidney," she says. With an eye for color and subtle

contrasts, Zelta's needlepoint pieces are award-winning quality and include Christmas stockings, unique tennis racket and golf club covers, theme vests, wall hangings, piano bench covers and needlepoint pillows.

Although, Zelta has successfully dabbled in other mediums, her greatest artistic contribution has been to carry on the tradition of generations of her prairie foremothers who inspired her lifetime achievement as an American folk artist.



ABOVE: The Texarkana, Arkansas-Texas (Olivia Smith Moore) Alumnae Club entertained members and their Pi Phi daughters with an angel exchange at the home of Mary Collom Buchanan Fore.

CENTER: Members of the San Antonio Alumnae Club at their March Cookie Shine.

LOWER: The Salt Lake City, Utah Alumnae Club Executive Committee "Bowled for Kids' Sake" to benefit the Big Brother/Big Sister Program of Utah. Front row: Cathi Clinch and Jana Faust Isenburg. Back row: Jeni Austin Libin, Laura Jane Tubbs, Brooke Anne Holyoak.

From Pi Phi Pens

TENNESSEE BETA, KRISTINE O'CONNELL GEORGE'S "THE GREAT FROG RACE"



Clarion Books recently announced Kristine's first collection of poetry, "The Great Frog Race," illustrated by Kate Kiesler. Kristine has served as poetry consultant for PBS's *Storytime* program, writes a

book review column and teaches creative writing and poetry. Her poems have been anthologized in children's poetry collections. She lives with her family in the Santa Monica Mountains of Southern California. "This first collection of poems by Kristine George is a loving appreciation for some of the countrysides greatest treasures and a celebration of the child's point of view of the world."

—*Publishers Weekly*.

INDIANA BETA AUDRA SNYDER BAILEY'S "HOLD FAST TO DREAMS"

Audra recently published her autobiography, "Hold Fast to Dreams." This book gives credit to a career that shapes us all—teaching. Audra graduated from college in 1930 with a teaching certificate. Her first teaching job was in a small school in Mt. Auburn. Following that was the broadening experience of teaching in a private boarding school in Maine, a trip abroad with the International Student Service, and on to 50 more years of teaching.

A highlight of Audra's long career as a revered teacher was the pioneering in Indiana of the American Field Service Student Exchange Program. For more than 35 years she helped scores of young people both go abroad and visit American schools and homes. She is the winner of the Thomas Jefferson Award for distinguished community service. The story of her 60-year teaching career is full of anecdotes of teaching in boarding and public schools and the life of a single parent in an age when it was not readily accepted.

Members of the 1968 Alabama Alpha pledge class met at the Grove Park Inn in Asheville, North Carolina to celebrate their collective 50th birthdays. Front row: Dalen McGonigal Livingston, Melanie Duffey Hutto, Anne Walker Drake, Alice Atkins Mercer, Martha Merrill. Back row: Sharon Phillips Kelley, Jane Edge Keeton, Donna Barnwell White, Mary Lynne Gamble Wilson and Pat Strother Ernest.



Family Ties



Karen Elizabeth Bates was initiated into Texas Delta at Texas Christian University. Five of Karen's 13 Pi Phi relatives were present, including Tennessee Gamma Laura Beville, Tennessee Gamma Barbara Huff Beville, member of Arrowmont's Board of Governors, Tennessee Gamma Martha Huff Bates, Texas Delta Karen Bates, Tennessee Gamma Patsy Huff Fuller and Missouri Beta Henrietta McCutchan Huff, now deceased, who taught in the Pi Beta Phi Settlement School.



Ohio Alpha Kelley Galbreath Bower is a fourth generation Ohio Alpha. The others include, her great-grandmother Helen Mauck Galbreath, initiated 1916, her grandmother Joan Galbreath Phillips, initiated in 1942, and her mother Deborah Phillips Bower, initiated in 1972. Front row: Three generations of Pi Phi's Deborah Phillips Bower, Joan Galbreath Phillips and Kelley Galbreath Bower. Back row: Tennessee Beta Dianne Phillips Albrecht and Ohio Beta Beth Shoman Phillips.

Anniversaries and Celebrations

The **FLORIDA BETA CHAPTER** at Florida State University celebrated its 75th anniversary. The three day event drew members of the 1926-1991 pledge classes from all over the United States. The Tallahassee Alumnae Club and Florida Beta collegians worked together to make this a memorable weekend. Special guests included National Panhellenic Conference Chairman Jean Wirths Scott and Iota Collegiate Province President Jill Tucker Read. Senior Charlotte Hogg spent months interviewing alumnae for a commemorative video that highlighted the history of Florida Beta's 75 years on campus.

On Friday evening a "welcome home" was held at the chapter house. On Saturday the festivities continued with breakfast followed by a program of songs, memories, skits, house tours and history displays. Jean Scott addressed Florida State University students at a Panhellenic event Saturday afternoon followed by a reception in her honor at the chapter house. A banquet was held Saturday evening featuring a presentation of Florida Beta's video history. Sunday's "Farewell Breakfast" sent the alumnae off with happy memories of the 75 years of Florida Beta Chapter.

Homecoming weekend at **MONTANA STATE UNIVERSITY** also marked the 75th anniversary celebration of Montana Alpha. Alumnae from all over the United States came to attend the special event. An open house, tailgate party, banquet and an

Seventy-fifth Anniversary



The **INDIANA DELTA CHAPTER** located at Purdue University celebrated its 75th anniversary. More than 200 Alumnae from throughout the nation joined the collegiate members to honor the 1921 founding of the chapter. Grand President Beth van Maanen Beatty was guest speaker at the banquet which was the culmination of a weekend filled with activities designed to renew friendships and cherish sisterhood bonds. Attendees enjoyed "pledge class" gatherings hosted by local alumnae; a tailgate "brunch" preceding a Saturday afternoon football game followed by a formal dinner.

honorary initiation followed by a Cookie Shine were among the activities planned for the celebration. Collegiate members of Montana Alpha entertained alumnae at the banquet with a skit representing the differences in music that have occurred through the past 75 years, including Shirley Temple, the BeeGees and others. Grand Vice President Maurine Hager Jones spoke at the final banquet. T-shirts and a history of the 75 years of the Montana Alpha Chapter were created for the weekend.

Among the highlights of the banquet was the appearance of the world-renowned Purdue Varsity Glee Club. Their rendition of "My Pi Phi Girl" was a surprise addition to their repertoire. A skit recognizing the 16 Indiana Delta founding members was performed by eight collegians and eight alumnae. Remarks were offered by Purdue Assistant Dean of Students for Greek Affairs Greg Singleton as well as Chapter President Amy McCabe.

The celebration ended on Sunday morning with a brunch and Cookie Shine at the chapter house.

All welcomed the appearance of one of Indiana Delta's Founders, 94-year-old Mary Otten Rose (with Charlotte Halsema Ottinger).



During the weekend of October 11-12, 1996, **NORTH DAKOTA ALPHA** celebrated its 75th anniversary. The activities included a tea at J. Lloyd Stone Alumni Center, a bus tour of campus, a banquet at the country club followed by activities at the chapter house. On Saturday a brunch was held for the House Corporation and alumnae. A tree dedication and house tours followed brunch. More than 200 alumnae and collegians were present for the anniversary celebration.

North Dakota Alpha's celebration brought members together to look back and celebrate their special memories, friendships and bonds that were created through Pi Beta Phi. North Dakota Alphas recognized the chapter's successes and accomplishments through the years.



Reunion

CALIFORNIA GAMMA pledge classes from 1958–1965 recently held a reunion organized by Linda Bowen Anderson. The luncheon was held at the Pi Phi house at the University of Southern California. Several collegians served as hostesses for the event. House Director Barbara Grey helped with the set up. CATERED box lunches were served. Decorations consisted of poster-size blowups of old photos from the archives. The pledge class of 1964 had a preparty the night before the luncheon organized by Christy Farrell Foster. Everyone in attendance had a great time, said Christy. Many of those who could not attend asked that it be done again in the near future. The group hopes to make it a semiannual event.

Plan it and They Will Come

At least that seemed to be the case for the 91 **TEXAS GAMMAS** who came to Dallas for a reunion weekend. Texas Gammas came from New York, Illinois, Kansas, New Mexico, Oklahoma, Colorado, Florida, California, Washington State, Washington, D.C. and all over the state of Texas. Pledge classes from 1954–61 were in attendance. The group included doctors, teachers, lobbyists, poets, performers, professors and business women. The group

also included Grand President Beth van Maanen Beatty, a Texas Gamma.

The weekend was filled with laughter, sharing, skits and songs.

Front row: Marilyn Gardner Woods.

Back row: Caryl Yontz, Shirley

Stephens Spillman, Suzanne Duvall,

Karen O'Brien Pfluger.



BETTY SHRIVER TOMLINSON, retired executive producer of Spokane Civic Theatre,

received the prestigious national Art Cole Award for "A lifetime of leadership in community theater," given by the American Association of Community Theatre.

The award was presented at AACT's conference in New York City. Betty is only the eighth person to receive the award.

A few of Betty's accomplishments in Spokane Civic Theatre, of which she was a founding member, have been to help form the Civic's Community Theatre Foundation, produce the production judged "Best in America" in 1989 and train hundreds of volunteers.

Today the Civic's budget is \$487,000 annually, which puts it in the top 20 community theaters in the country. It has 1,800 subscribers and a yearly attendance of 35,000. The theater routinely stages 12 shows a year, with sets by a professional resident set designer and costumes designed by a resident professional costume designer.

The **KANSAS CITY, MISSOURI-SHAWNEE MISSION, KANSAS ALUMNAE CLUB** has developed a unique way to share the Arrowmont spirit. For the past 20 years the club has awarded Arrowmont scholarships to area art teachers and artists. The club chooses the winners from applications received from area school districts and craft guilds. The recipients, upon their return from Arrowmont, present a program for club members in which they share their experience and display their work. The club has found it an effective way to promote Pi Beta Phi's national philanthropy.

Carolyn Helman Lichtenberg Crest Award Winners



Dr. Susan Chace Lottich
North Carolina Beta
Duke University
Indianapolis, Indiana
Breast Surgeon

Chace is founder and director of the Center for Women's Health in Indianapolis, Indiana, specializing in breast disease.

Chace's interest in breast disease began at Duke University where she earned both a chemistry degree with specialization in biology and her medical degree. An eight-year residency followed in general surgery with an additional three-year fellowship in breast cancer research. Chace is board certified by the American College of Surgeons. She is an author and noted lecturer.

Included in her many lectures was one given to her Indianapolis Alumnae Club. She hosted the club at the Center for Women's Health and closed the meeting with a surprise Cookie Shine. Currently Chace serves on the faculty of the Indiana School of Medicine as a breast specialist.

Her dedication to the cause of women's health has made a significant impact on breast cancer awareness and treatment in her community.

The Center for Women's Health is a dedicated place where women can find complete help and support for any condition or question related to breast disease. Their services encompass superior technology and an experienced staff.

"Her patients—we now number in the thousands, have sought and found in Chace a friendly, thoughtful, efficient breast cancer specialist from whom in our darkest moments we have been able to draw strength and hope."

Indiana Gamma Ann Gill Cummins

Sandra Street Estess
Texas Beta
Southern Methodist University
Dallas, Texas
Community Volunteer



Recognized in her community as a dedicated volunteer, Sandra has a history of service reflecting profound commitment to raising funds for children's health and education issues. Sandra has received recognition from the Child and Family Guidance Center at a Tribute to Heroes Luncheon. Hero awards are given to those who have made a difference in the lives of children in the community.

Currently Sandra is a member of the Board of Trustees for the Southwestern Medical Foundation.

She served as a founding board member of Educational First Steps whose mission is to provide quality early childhood education for disadvantaged children and to strengthen the family unit. Sandra has served on the Dallas Child Guidance Center Clinic aiding and achieving its goal of raising

more than \$3 million. She was a major force in founding the local Ronald McDonald House to serve families of children with cancer. Sandra is active in the Dallas, Texas Alumnae Club and shared her fund-raising expertise by serving on the Pi Beta Phi Foundation's Capital Campaign Committee during the Campaign for Arrowmont.

"Sandra is a hard working and dedicated volunteer with an unwavering focus upon the well-being of the children in our community."

Texas Alpha Ann Dudgeon Phy

First presented in 1991, this award honors Carolyn Helman Lichtenberg who served the Fraternity as Grand President from 1985 to 1991. Recipients are distinguished alumnae who exhibit excellence and outstanding leadership in their professions and careers or volunteer service to their communities.



Margaret Taylor Smith
North Carolina Beta
Duke University
Birmingham, Michigan
Community Volunteer

Margaret was president of Women's College Student Government while at Duke University and later presided over the College's Alumnae Association. After moving to Michigan she focused on less fortunate families in need of legal assistance. The result was the formation of the Legal Aid Society of Oakland County. She subsequently began New Horizons, a sheltered workshop for disabled adults. Margaret was honored with the Heart of Gold Award for outstanding service to the community. Her leadership and service to Duke University earned her recognition as an outstanding alumni. Her service includes Chairwoman of the Support Committee for an innovative women's studies program as well as leadership roles in development, admissions and

board of visitors. Answering a need for research on interracial marriages Margaret co-authored "Mother, I Have Something to Tell You." The book explores traditional mothers coping with the non-traditional lifestyles of their children.

In 1985 Margaret was the first woman appointed to the Board of Trustees of the Kresge Foundation, which has annual distributions of \$70 million. She now serves as the foundation's chairman.

"Margaret is a leader in our Detroit area. She attacks every responsibility with openness and integrity."

Missouri Gamma Frances Wilson Merker



Frances Allison Weaver
Kansas Beta
Kansas State University
Pueblo, Colorado
Author and Lecturer

Frances is an inspiring role model for women. Her current successful career began after she was 55 years old. After Frances was widowed in her mid-fifties she returned to school to study journalism, develop new skills, meet new people and face new challenges. She packed up and went to school at Adirondack Community College in upstate

New York—2,000 miles from her Colorado home. Now, 18 years later Frances has enjoyed great successes in the field of communications. The writer and speaker has a book contract with the Walt Disney Company and her career is soaring to new heights. She is the author of 10 books whose main theme centers around encouraging older women to start a new career, go back to school, travel and enjoy life. "The Girls with the Grandmother Faces" is Frances' seventh self-published book which has already sold 100,000 copies. The title was spurred by Frances' granddaughter. When Frances told her that the girls were coming over, the child asked, "What girls?" "You know," said Frances, "the girls I play bridge with." The child responded, "Oh, you mean the girls with the grandmother faces?"

She is a sought after lecturer for writers conferences and women's organizations. Frances frequently is interviewed on television and radio as a knowledgeable and renowned spokesperson for older generations. Presently, she is the Seniors Editor for NBC's, the "Today Show."

"Frances is a remarkable woman whose 'yes you can' attitude is one to be admired"

Colorado Springs Alumnae Club

In Memoriam

Alabama Alpha

LOIS BUTLER ADAMS, 1927; February 1997
MILDRED THOMPSON DOWNS, 1944;
February 1997
MARTHA KLUTZ HASKELL, 1932;
February 1997
ETHEL MORLAND WORD, 1940;
November 1996

Alberta Alpha

MARION MACRAE GRIFFITHS, 1940; July 1996

Arizona Alpha

JACQUELINE ARMSTRONG EHRIK, 1974;
November 1996
HELEN WHITEHEAD GOLDTHWAITE, 1917;
December 1996

Arkansas Alpha

CONSTANCE PETERS GARDNER, 1926;
April 1996
SARAH HEAGLER HARVEY, 1939; January 1997
MARION PRATHER HAYS, 1919;
December 1996
BETTY LOU PIPKIN SIMMONS, 1944;
February 1997

California Alpha

LOUISE HUDSON WILSON, 1930;
February 1997

California Delta

JEANNE ROBERTS BOOTH, 1941; July 1996
SOPHIE MONIQUE MCNITT, 1990;
December 1996

California Gamma

JEAN ROESCH HOWARD, 1947; January 1997
DORIS HAMMOND REID, 1921;
December 1996

Colorado Alpha

MARJORIE WALLACE RANCH, 1945;
December 1996

Colorado Beta

PATRICIA PRUDEN DYER, 1950;
November 1996
MARGARET SMITH GRAHAM, 1938;
December 1996

Colorado Gamma

JENNIFER L. METTENBRINK, 1994; March 1997

Connecticut Alpha

RUTH TENNSTEDT HINGKELDEY, 1944;
November 1996

D. C. Alpha

MURIEL DAVIS HARROLD, 1926; March 1997

Florida Beta

CAROLINE PAINTER BROWN, 1939;
November 1996
JULIA BURNETT BRYANT, 1936;
September 1996
GLADYS LONG STORTS, 1927; March 1997

Georgia Alpha

LAURA VANHOOK LEMMON, 1985;
December 1996
ELON CRUMBLY OWENS, 1943;
February 1997
EMILY HARPER SCHROEDER, 1968; March 1997

Idaho Alpha

JOYCE FREELAND BRIGGS, 1947; March 1997

Illinois Alpha

MARGARET BOWKER COOPER, 1951;
January 1997
LAURETTA DRAYSON HESTER, 1937;
January 1997
JOAN PHIFER HUNT, 1952; January 1997
MARGARET SMILEY MALLEY, 1940;
January 1997

Illinois Beta

HELEN RENK FIMMEN, 1930; January 1996

Illinois Beta-Delta

HELEN MCMASTER STEVENSON, 1935;
February 1996

Illinois Delta

EDITH ALDRICH TEMPLE, 1915;
December 1996
KATHRYN BRADLEY WETZEL, 1922;
December 1996
DOROTHY KENWORTHY WHEELER, 1921,
affiliated Iowa Gamma; October 1996

Illinois Epsilon

VIRGINIA PUNTON KELLEY, 1936;
December 1996
NANCY EGNER LINDSTROM, 1954;
February 1997
HALCYON MITCHELL SLOSS, 1929;
February 1997

Illinois Eta

HARRIETT HOLMES BIRT, 1930;
December 1996
SHEILA HAYES DWYER, 1947; December 1996

Illinois Theta

BETTY BARTHOLOMEW BALDWIN, 1947;
September 1996
LUCY DAY SCHERER, 1947; January 1997
KATHY WATERS VERGON, 1968; January 1997

Indiana Alpha

JOAN WAGONER HOBBS, 1944; February 1997
CAROL RICHARDSON ROBISON, 1913;
January 1997

Indiana Beta

AUDREY GIBSON HOSTETTER, 1938;
March 1997
HELEN WARD MATTINGLY, 1921;
November 1996
PHYLLIS RUSSEY MILTENBERGER, 1954;
November 1996
CORNELIA D. SCHEID, 1929; December 1996
GERALDINE SMITH WADDLE, 1937;
November 1996
ANN BATSCH WALKER, 1936; October 1996
CLARA-MAE ROBBINS WRIGHT, 1914;
June 1996

Indiana Gamma

DORTHA GODDARD PEARCE, 1931;
March 1997
CHARLENE HARRISON SCHENK, 1946;
April 1996

Indiana Delta

LOUISE SIMMINGER BEGGS, 1929;
December 1996
CALISTA CREEL BRANDT, 1940; January 1997
MARIJEAN HUTCHISON DUCETT, 1939;
October 1996
PATRICIA YOUNT KALLAM, 1947;
February 1997

In Memoriam

Indiana Epsilon

SUZANNE BLACK CAYLOR, 1943;
November 1996

Iowa Alpha

MAUDE CALHOUN CAMPBELL, 1913;
January 1997

Iowa Beta

MARY PROUDFOOT GOULART, 1950;
February 1997
MARGARET SCHULER MEEK, 1924;
January 1997
GWEN MEYERHOFF WAGGONER, 1919;
March 1997
ISABELLE PEDDICORD WEIRICK, 1921;
February 1997

Iowa Gamma

JEANNE SCHUMACHER CRANDALL, 1938;
May 1996
MARTHA GILES REEVES, 1931; November 1996

Iowa Zeta

GRACE GILMORE AVERY, 1919;
December 1996
CARLIN IRISH CLEAVER, 1958; December 1996
GRETA GEHRKE MAPES, 1966; October 1996
MABEL STROMSTEN PARSONS, 1930;
February 1997

Kansas Alpha

BARBARA BAKER KIPPES, 1951; February 1997
ELAINE MEIER STELLE, 1925; January 1997

Kansas Beta

JO ANN SCHEU BADLEY, 1945; February 1997
JERALEE AMES HOWARD, 1941; February 1997
HELEN MANGELSDORF PORTER O'DELL, 1930;
January 1997
HELEN BLANK TUTTLE, 1917; September 1996

Kentucky Alpha

ETHEL KRIEGER DERING, 1932;
December 1996

Louisiana Alpha

CORINNE BASS, 1923; January 1997
JUANITA BASS TRUMBO, 1919; January 1997

Louisiana Beta

MELINDA FELKER LYNN, 1960; February 1997
MARGRET PULLEN MUNSON, 1943, affiliated
North Carolina Alpha; January 1997

Manitoba Alpha

KATHLEEN PLAXTON CARRUTHERS, 1929;
March 1996

Maryland Alpha

MARY MERCER COBURN, 1933;
December 1996
JANET MORROW MOORE, 1941;
December 1996
EDITH CONNET WILLIAMS, 1924;
December 1996

Maryland Beta

DOMINICA "MICKEY" REPETTI SEYLE, 1964;
February 1997

Massachusetts Alpha

MABEL CONNELL HENSHAW, 1924;
August 1996
NORMA HOPSON JONES, 1922; July 1996

Michigan Alpha

ARDATH HAGAMAN BOOTES-STEVENS, 1937;
February 1997
THELMA PATTON BUHBE, 1937;
November 1996
ARLENE THOMAS SIEKMAN, 1932;
January 1997

Michigan Beta

EVELYN GABEL ENTEMAN, 1948;
February 1997
GRACE BECKHAM RYAN, 1925; March 1997

Michigan Gamma

BILLYANN CLIPPERT BROWN, 1946;
December 1996

Minnesota Alpha

MARJORIE DARRELL DURANT, 1925;
December 1996
LOUISA WETHERBEE HEDMAN, 1944;
March 1997
ROSAMUND SMITH PRESCOTT, 1942;
March 1996

Missouri Alpha

KATHLEEN CEARNAL BRIDGES, 1950;
November 1996
VIRGINIA HALE FOREMAN, 1922; January 1997
ROSEMARY RUDDY LANGWORTHY, 1935;
December 1996
MARTHA CORNISH SIFERS, 1920;
February 1997

Montana Alpha

IRENE FAXON THOMAS, 1931; December 1996
MATILDA MARIS SEVERSON, 1942;
January 1997
VERLEE SAUNDERS CHRISTIE, 1964;
November 1996

Nebraska Beta

ELVA HARTFORD HARTLEY, 1920; January 1997
ALICE KIEWIT, 1926; October 1996
DOROTHY LORRAINE LOVGREN KNOCK, 1932;
January 1997
MARGARET STEWART MILLS, 1943;
December 1996

Initiation year and month and year of death follow each member's name.

When submitting death notices to Central Office, please give month and year of death.

Names cannot be listed without this information.

In Memoriam

Nevada Alpha

PATRICIA WILSON CROSS, 1946;
December 1996
KATHLEEN HAFFEY HOUX, 1932; January 1997

New York Alpha

MILDRED S. CARVER, 1932; August 1996
MARY MCINROY SHEFFER, 1928;
December 1996

New York Gamma

JEANNETTE SMITH LUNDBERG, 1955;
December 1996

New York Delta

NINA JORDAN SEYMOUR, 1939;
December 1996

North Carolina Alpha

JANE PIPER BOND, 1951; December 1996
VIVIAN PHIPPS BOND, 1944; February 1997

North Carolina Beta

LUCY ELVIRA BURLEIGH ELLIS, 1933;
October 1996
HILLIARD FRANCES HARDIN, 1936;
January 1997
RIVERA INGLE HOLMES, 1933; December 1996

Nova Scotia Alpha

PAULINE B. CORRIGAN, 1934; September 1996

Ohio Alpha

LOIS ROPER GEIGER, 1957; January 1997
ROSALIND "POSIE" FOUTS LANSDOWNE, 1931;
February 1997
LENORE TRIMBLE MALONE, 1929;
November 1996
GERTRUDE FERRELL MEEK, 1927;
February 1997
CHARLOTTE PLISKE SPRINGER, 1937;
December 1996

Ohio Beta

HELEN RUSSELL MITCHELL, 1927;
January 1997
DONNA MORRIS READ, 1947; September 1996
MARY JANE AMRINE RIDDLE, 1926;
January 1997
BERNICE SCHILL STEARNS, 1937; January 1997

Ohio Delta

MARTHA VALENTINE BOWDLE, 1936;
January 1996
JOAN LESLIE BUNNELL GAMBILL, 1940;
December 1996
MARGARET NICHOLSON RAY, 1926;
October 1996

Ohio Epsilon

BARBARA KLAG BROER, 1945; January 1997
BEVERLY BARNARD CLARE, 1957;
February 1997

Oklahoma Alpha

MARIE VOEGELI HEISLEY DRUMMOND, 1964;
October 1996
EVELYN BRADEN HAMMOND, 1937;
October 1996
ELVETA MINTER LEHR, 1922; February 1996
PEGGIE COCHRAN SAPPINGTON, 1927;
January 1997

Oklahoma Beta

MAYMIE SUE DAYTON BROOKS, 1923;
February 1997
DORIS MULLENDORE MATTHEWS, 1939;
January 1997
BETTY JO MORRIS STEWARD, 1944;
October 1996
ELAINE JARVIS YEATON, 1929; March 1997

Ontario Alpha

HELEN M. BARKER, 1924; February 1997
FRANCES BEGG TWAITS, 1929;
November 1996

Ontario Beta

EFFIE WILSON CHAPMAN, 1959; April 1996
BETTY WISMER ZURBRIGG, 1934;
December 1996

Oregon Alpha

FRANCES HARE SIMOLA, 1925; August 1996
PATTY FAGAN YURKOVIC, 1953; March 1997

Oregon Beta

MEREDITH FOOTE MARTIN, 1957;
December 1996
VIVA YOUNG TORCOM, 1932; January 1997

Pennsylvania Beta

MADELINE MORGAN HOLLER, 1941; May 1996
ALICE SWEeley SUCHER, 1928; February 1997
JANE THOMPSON UNRUH, 1941; October 1996
HELEN GODCHARLES WAGNER, 1932;
April 1996
AUDREY HUSK ZIGLER, 1946; November 1996

Pennsylvania Gamma

DOROTHY SPONSLER DYMOND, 1924;
December 1996
MARY MACKIE ESHELMAN, 1940;
September 1996
MILDRED DAY GRAYBILL, 1916;
December 1996
RACHEL FORCEY OWEN, 1924; August 1996
MARY KOLLER PETERS, 1921; March 1997
MARGARET MARTIN SLOANE, 1932;
February 1997

Pennsylvania Delta

SARA WEST WENDLANDT, 1927; March 1997

South Dakota Alpha

VERA CLARK CHRISTENSON, 1930;
November 1996
HELEN KRUEGER MERCHANT, 1954;
September 1996
ALICE ABELL SCHULL, 1930; February 1996

Tennessee Alpha

ELIZABETH REDFORD COLE, 1939;
October 1996

Texas Alpha

KATHLEEN KOON BARTON, 1934;
November 1996
JO RICHARDSON BURCK, 1955; February 1997
KATE MCALPIN CRADY, 1970; January 1997
JANELLE HICKS EASLEY, 1952; January 1997
VIRGINIA MIDDLETON LANDRETH, 1937;
December 1996
ADA WYNNE LIFE, 1925; November 1996
DAPHNA GRISHAM OLES, 1929;
December 1996
VIRGINIA NALLE PAGE, 1930; January 1997
MARY BRUGH BRADEN THOMAS, 1935;
December 1996
EMILY KATHERINE WULFF, 1970;
November 1996

In Memoriam

Texas Beta

ANN WRIGHT GULLEDGE, 1939; July 1996
MARY KNOWLES MONROE, 1934; March 1997
WINIFRED CUTLER O'DONNELL, 1927;
December 1996
VIRGINIA PERKINS WORTHINGTON, 1931;
December 1996

Texas Delta

ANNA CAROLYN MILLER COSBY, 1956;
December 1996
CAROLYN CLARK VAN DENT, 1960;
November 1996

Texas Zeta

MARTHA ALEXANDER CROUCH, 1977;
December 1996
SUSAN MUENZLER HUFFMAN, 1977; June 1996

Utah Alpha

FLORENCE HAMMOND BREWER, 1931;
June 1996
MARGARET TANNER HAMILTON, 1933;
December 1996
MARION STRATFORD HILLIS, 1940;
November 1996
JUDITH HAMPTON WHITNEY, 1936;
January 1997

Vermont Beta

MARY ELIZABETH METCALF FROST, 1941;
January 1997
CHARLOTTE BROWN MURRAY, 1924;
November 1996

Virginia Alpha

MARILYN ODEN BROLLIER, 1946, affiliated
Texas Alpha; February 1997
ANNE HOBSON, 1943; October 1996

Virginia Gamma

MARTHA PAISLEY MARKLE, 1949; March 1997

Washington Alpha

JUNE BARRY ALLEY, 1928; February 1997
SHIRLEY KELLEY PAYNE, 1943; March 1997
JANE WEBB SIMONDS, 1929; February 1997
FRANCES BROWNELL SPRINGSTEEL, 1929;
February 1997
W. ANN WILLIAMS WOLF, 1955;
February 1997

Washington Beta

JUNE ANDERSON VAN LEUVEN, 1931;
January 1997

West Virginia Alpha

KATHLEEN COLEMAN HASTINGS, 1944;
June 1996
VIRGINIA PORTER HICKS, 1973; June 1996
FRANCES THOMPSON YOUNG, 1950, affiliated
Georgia Alpha; January 1997

Wisconsin Alpha

CHARLOTTE H. BISSELL, 1930; January 1997
DOROTHY ATKINSON ELA, 1924;
December 1996
JANET SHAW WOODMAN ESTRADA, 1933;
December 1996

Wisconsin Beta

JANET PALMER BOBISUTHI, 1939;
December 1996
MARY ANN DONLEY BUDDINGTON, 1940,
affiliated Texas Beta; February 1997
JUDITH BULLA MOORE, 1930; January 1997
JOANNE CANNELL SCHUETT, 1946;
November 1996
LOUISE ROSSI VILMAIN, 1932; December 1996

Wyoming Alpha

BETTY BENELL HOOVER, 1940; February 1997
LINDEN L. STOREY GALE, 1948; January 1997
ELIZABETH JOHNSTON THOMPSON, 1925;
March 1997

Pi Beta Phi Memorial Hymn

*Sometime: At dusk when the sun sinks low
The flight of my Arrow shall end.
Through the silent hush of the evening glow,
I shall slip away my friend:*

*But the silken tie of the wine and blue
Will bind through eternity
And friendships chain of golden hue
Will link eternally.*

Follow the Arrow

Pi Beta Phi—Leading the Way Since 1867



Pi Beta Phi will be launching an official Fraternity web site this summer. The Pi Beta Phi site will offer information to our members and non-members about the Fraternity and its programs.

Information on the web site will include:

- **PI PHI PARTICULARS**—Pi Phi's objectives, fraternity heritage and philanthropies will be explored under this section.
- **PI PHI PRESENTLY**—This section will document our roll call of collegiate chapters and alumnae clubs, international officers, Central Office information, graduate consultant and the Directions programs.
- **PI PHI'S PUBLICATION**—The newest features and issues of Pi Phi's magazine *The ARROW*.
- **PI PHI PURCHASING**—Check here for the newest Pi Phi Express merchandise, official jewelry and great sale items.
- **PI PHI PLANNINGS**—Special events, celebrations and extension activities of the Fraternity.
- **PI PHI POSSIBILITIES**—Pi Beta Phi Foundation's pages including scholarship information and innovative programs funded by your gifts.

The Pi Beta Phi Fraternity web site will be best viewed using Microsoft Internet Explorer 3.x or Netscape Navigator 3.x.

Watch for additional information in the Fall 1997 *ARROW*. Check out the site at www.pibetaphi.org and share your thoughts and comments on our guest book.

The site is being designed and maintained in a partnership between the Fraternity and The Marketing Group in Nashville, Tennessee.

Fraternity

News & Notes

Short Term Medical Insurance

Two million dollars in temporary health coverage for 30–185 days is available.

This provides valuable medical protection for those who are recently graduated, waiting to be covered under a group policy, between employment or laid off, and in need of temporary medical protection.

Pi Beta Phi has arranged this service for you through Coverdell & Company (800) 787–8711 ext. 38561.
Time Insurance Company

Pi Phi On-Line

Pi Phi Printings, the quarterly on-line newsletter has been expanded to include Internet users. If you would like to sign up, send a message to Emily Russell Tarr, Director of Alumnae Records, mail40900@pop.net. Network with other Pi Phis and keep up to date with Pi Phi on-line.

Chapter Anniversary

1997 marks the 100th anniversary of the Indiana Gamma Chapter at Butler University. The Centennial Celebration will take place Homecoming Weekend, September 26–28, 1997. For additional information contact:

Lisa Gundaker
6182 Rosslyn Avenue
Indianapolis, Indiana 46220



1997 Historic Ornament

The 1997 Angel Ornament is fourth in a series of limited edition collectible ornaments. This year's ornament, designed by artist Karin Hertel McGinnis, Wisconsin Beta, was a contestant in the Foundation's Angel With a Heart contest. The ornament comes attractively gift boxed and is sold through Pi Phi Express. To order the 1997 Angel Ornament contact Pi Phi Express (800) 322–1867.



Have We Got it Right? Let Us Know!

All 114,500 Pi Beta Phi Fraternity alumnae were recently notified of our upcoming new Alumnae Directory and asked for their input. If you have not already done so, please return your questionnaire today. This will ensure that your personal information will be accurately included in this new reference book.

Within two to three months the verification phase of this project will begin. Alumnae will be receiving a telephone call from Bernard C. Harris Publishing Company, Inc., the official publisher of our Directory. Please give the representative who calls you a few moments of your time to verify your listing.

To place a reservation for the Pi Beta Phi Fraternity Alumnae Directory, please advise the Harris representative during the conversation. This will be the only opportunity alumnae will have to order the book.

Scheduled for release in December 1997, the Pi Beta Phi Fraternity Alumnae Directory promises to be the definitive reference of more than 114,500 of our alumnae. Don't miss the opportunity to be part of it!

Fraternity

News & Notes

Pi Beta Phi Colonizing at Lehigh University

Pi Beta Phi will establish a new chapter at Lehigh University in Bethlehem, Pennsylvania, in September 1997. This will be our 132nd collegiate chapter.

If you know a young woman attending or planning to attend Lehigh University and who may be interested in sorority membership, mail your Rush Information Form to:

Central Office
7730 Carondelet, Suite 333
St. Louis, Missouri 63105

Pi Beta Phi Alumnae to Europe!

Visit 7 countries in 16 days for just \$2,166 including airfare from New York

WHEN: October 6 – 21, 1997

WHERE: Visit London, Paris, Lucerne, Florence, Rome, Venice, Innsbruck, Munich, Heidelberg and Amsterdam!

HOW: Call now for reservations—Space is limited!

Windjammer Travel
Claire or Lynn
(800) 633-1545

Become an Alumnae-At-Large Member

Join the thousands of dues-paying alumnae for 1997-98. Your dues payment will ensure the continued success of our Fraternity. Pi Beta Phi receives its financial support mainly from dues, fees and voluntary contributions from alumnae.

Pi Beta Phi alumnae in a club area are given the opportunity to pay alumnae dues through their alumnae club. For alumnae who live in an area without an alumnae club, dues may be paid directly to Central Office through a new program called Alumnae-At-Large. Members will receive:

- * Pi Beta Phi Alumnae Membership Card
- * *Focus on Alumnae*, alumnae newsletter
- * "Pi Beta Phi Alumna" window decal

Name: _____

Address: _____

City: _____ State: _____ Zip: _____

Chapter: _____

Enclosed is my check for \$15 payable to Pi Beta Phi Fraternity, for alumnae dues.
(Dues are not deductible for federal tax purposes.)

Send check, along with the completed form to:
Pi Beta Phi Central Office,
7730 Carondelet, Suite 333,
St. Louis, MO 63105

For Office Use Only

Sales Code _____

Province No. _____

Ref No. _____

Check No. _____

Amount _____

Seventy-five-Year Members

LYDIA ARMSTRONG ADAMS
Iowa Gamma
Ames, Iowa

MARTHA C. AKERS
Virginia Alpha
Charlotte, North Carolina

KATHRYN BULLINGTON KING
BARBER
Illinois Beta
Lajolla, California

DOROTHY ROGERS BRANHAM
Maryland Alpha, affiliated
New York Delta
Orlando, Florida

RUTH STEELE BRONSON
Indiana Alpha
Vista, California

FRANCES JOHNSTON
BURKHALTER
Ohio Beta
Missoula, Montana

MARY RAMSEY CLARK
Texas Alpha
Washington, D.C.

F. CORNELIA NETTLESHIP
CORKRUM
Washington Beta
Walla Walla, Washington

RUTH JONES CRAFTS
Ohio Beta
Tempe, Arizona

CORA MILTENBERGER
CREIGHTON
Louisiana Alpha
New Orleans, Louisiana

HELEN FOWLES DRYDEN
Michigan Alpha
Waverly, Ohio

HELEN NEWTON EHLERT
Vermont Alpha
Rutland, Vermont

VIRGINIA HALE FOREMAN
Missouri Alpha
Uvalde, Texas



VIRGINIA DEAL GROSSER
Kansas Beta
Salina, Kansas

LYDIA KOTHS HARRIS
North Dakota Alpha
Coeur d'Alene, Idaho

GERTRUDE BINGENHEIMER
HASTINGS
Wisconsin Alpha
Blain, Pennsylvania

LUAN HENDEE HENRY
Wisconsin Beta
Laguna Hills, California

ERNESTINE BASS HOPKINS
Louisiana Alpha
New Orleans, Louisiana

ADA HAVNER JONES
Iowa Gamma
San Jose, California

DORIS DAYTON JONES
Iowa Zeta
Sheboygan, Wisconsin

HELEN THOMPSON JURDEN
Iowa Zeta
Kansas City, Missouri

HELENE SCHUMACHER
KIRKWOOD
Michigan Beta
Denver, Colorado

GEORGIE LOVING
Oklahoma Alpha
Clinton, Oklahoma

DOROTHY CALKINS SMITH
MARTYN
Ohio Beta
Madison, Ohio

EUNICE WHITE MCKINNEY
Indiana Alpha
Greenwood, Indiana

ROZELLA FIETZ MEIZNER
Arkansas Alpha
Colorado Springs,
Colorado

JEROLINE POWELL PIER
Indiana Alpha
Indianapolis, Indiana

ISABEL R. PIFER
Colorado Beta
Sandwich, Massachusetts

MARGARET CAMPBELL POST
Montana Alpha
Bozeman, Montana

MARY LARRICK RICHARDSON
Colorado Alpha
Bloomington, Indiana

THERESA JUDGE ROSS
Iowa Gamma
Gibbon, Nebraska

BERNARDA BRYSON SHAHN
Ohio Alpha
Roosevelt, New Jersey

GRACE KENYON SINGER
New York Gamma
Wilson, New York

FLORENCE CONNER
SULLIVAN
New York Delta
Pittsford, New York

DOROTHY LINE SWARTZ
Pennsylvania Gamma
Mechanicsburg,
Pennsylvania

JEAN GIST TREPP
Ohio Alpha
Athens, Ohio

ELEANOR DABOLL
TROWBRIDGE
Massachusetts Alpha
Stamford, Connecticut

BERNICE STEWART VAN
BUSKIRK
Oklahoma Beta
Houston, Texas

GERTRUDE FLEISHER
WAGNER
Indiana Delta
West Burke, Vermont

BERNICE PURINTON WEBSTER
Maine Alpha
Boise, Idaho

LEDA METZGER WHITEHOUSE
New York Alpha
Tucson, Arizona

DOROTHY DIGGINS WIGGINS
Indiana Delta
Boca Raton, Florida

JOSEPHINE BULLOCK WILSON
Arkansas Alpha
Oklahoma City, Oklahoma

IRMA BRASHER WOODS
Iowa Beta
Indianola, Iowa

MABEL NOTTINGHAM YODER
Illinois Eta
Los Alamitos, California



ABOVE: Ohio Alpha Jean Gist Trepp with a sample of the angels she has made.

For additional information about Jean and her angels see page 44.

Their future—

Serving as Graduate Consultants for the Fraternity



Barbra Boyen

Traveling Graduate Consultant

- **Chapter** Oregon Gamma, Willamette University
- **Degree** Bachelor of Arts, Business Economics
- **Chapter Offices** Chapter President, Chapter Treasurer, Assistant Treasurer
- **Activities** Willamette University's Opening Days leader for incoming freshman, Migrant Family Holiday Gift Collection Coordinator, Bush Elementary School Easter Egg Hunt Coordinator

"I want to give back something to an organization that has added so much to my life. My membership in Pi Beta Phi has helped me develop into a strong, independent and confident woman."

Amy Dailey

Resident Graduate Consultant at Lehigh University

- **Chapter** Virginia Zeta, Virginia Polytechnic Institute & State University
- **Degree** Bachelor of Science, Psychology
- **Chapter Offices** Chapter President, Vice-President of Social Advancement, Chapter Historian
- **Activities** Senior Programming Chairman for Student Alumni Associates, Rho Lambda Honorary, Campus Orientation Leader

"Energy and enthusiasm are the keys to doing a great job and enjoying the job you are doing."



Tillie Galan

Traveling Graduate Consultant

- **Chapter** Florida Delta, University of Florida
- **Degree** Bachelor of Science, Business Administration
- **Chapter Offices** Chapter President, Vice-President of Moral Advancement
- **Activities** Order of Omega Leadership Honorary, Omicron Delta Kappa Leadership Honor Society, Golden Key Academic Honorary, Gamma Sigma Alpha Academic Honorary, National Hispanic Scholar

"Clear, concise communication is essential in our chapters."



For the next year the future of these ten women will be serving as ambassadors for the Fraternity. Six young women will be employed as Traveling Graduate Consultants visiting collegiate chapters from coast to coast. Four women will be based with new chapters or colonies as Resident Graduate Consultants.

Annie Jones

Traveling Graduate Consultant

- **Chapter** Nebraska Beta, University of Nebraska, Lincoln
- **Degree** Bachelor of Education
- **Chapter Offices** Chapter President, Panhellenic Delegate, Philanthropy Chairman
- **Activities** Teacher's College Advisory Board, Chancellor's Senior Innocents Honor Society, Golden Key Academic Honorary, Pi Lambda Theta Education Honor Society

"I have dedicated a great deal of time and commitment to Pi Beta Phi and can honestly say it has been the most worthwhile investment of energy that I have made in my life."



Katrina Kuehn

Traveling Graduate Consultant

- **Chapter** California Beta, University of California, Berkeley
- **Degree** Bachelor of Science, Psychology
- **Chapter Offices** Chapter President, Chapter House Manager
- **Activities** Mentor at Oxford Elementary School, Tutor for Elementary Schools in Berkeley

"Pi Phi has become my home and I want every Pi Phi to realize just how special it can be. As a Graduate Consultant, I will help each chapter find success and meaning in Pi Beta Phi."

Kristin Loupee

Traveling Graduate Consultant

- **Chapter** Iowa Zeta, University of Iowa
- **Degree** Bachelor of Arts, Economics
- **Chapter Offices** Chapter President, Ritual Chairman, Greek Council Chapter Representative/President
- **Activities** Associated Student Honors Program, Greek Woman of the Year, Omicron Delta Kappa Leadership Honor Society, Mortar Board National Honor Society, Order of Omega Greek Honor Society

"It's about working together and being dedicated to something you cherish. I want to be able to help chapters become strong and give new ideas to chapters that have been successful."





Katie Matson

Resident Graduate Consultant at Western Michigan University

- **Chapter** Oregon Alpha, University of Oregon
- **Degree** Bachelor of Arts, Business Administration
- **Chapter Offices** Chapter President, Assistant Pledge Educator
- **Activities** Order of Omega Greek Honor Society, Centurion Award for Top 100 Students, Artemis Award for Top Ten Greek Woman, Greek Community Service Award

"My decision to join Pi Beta Phi was one of the best decisions I ever made. As a Graduate Consultant, I will finally give back to Pi Phi what it has given to me."

Sheila McKenna

Resident Graduate Consultant at Pepperdine University

- **Chapter** Virginia Eta, University of Richmond
- **Degree** Bachelor of Arts, Sociology
- **Chapter Offices** Pledge Class President, Vice President of Mental Advancement, Vice President of Moral Advancement
- **Activities** University Orientation Advisor, College Government Association Senator, University Carnival Committee Member, Alpha Kappa Delta Sociology Honor Society

"Being a Graduate Consultant will give me the opportunity to visit other chapters, see their dedication and better understand the essence of our Founders' goals to form an organization based on the moral, mental and social advancement of women."



Erin Walter

Resident Graduate Consultant at University of Guelph

- **Chapter** Iowa Gamma, Iowa State University
- **Degree** Bachelor of Arts, Journalism and Mass Communications
- **Chapter Offices** Rush Chairman, Assistant Vice President of Moral Advancement, Philanthropy Interest Group Leader
- **Activities** University Theater Publicity Coordinator, University Blood Drive Co-Chairman, Mortar Board National Honor Society, Kappa Tau Alpha Journalism Honor Society

"Through goal setting, team work, creativity, a sense of humor, and always, always an eye toward the future, we can achieve success."

Erica Wood

Traveling Graduate Consultant

- **Chapter** California Theta, University of California, Davis affiliated California Zeta, University of California, Santa Barbara
- **Degree** Bachelor of Arts, Biology
- **Chapter Offices** Vice President of Moral Advancement, Presidential Assistant, Song Chairman
- **Activities** University of California, Davis Concert Choir, University of California, Santa Barbara Gospel Choir and Greek Conduct Board

"The opportunity to see, experience and assist other Pi Phi chapters around the country as well as meet hundreds of Greek women will be an experience of a lifetime."



A. Embroidered sports T-shirt.
Specify color: Hunter, Navy,
Grey (not pictured). M, L.

T233 \$25.00

B. Pi Beta Phi Classic T-shirt.
XL only.

T197 \$14.50

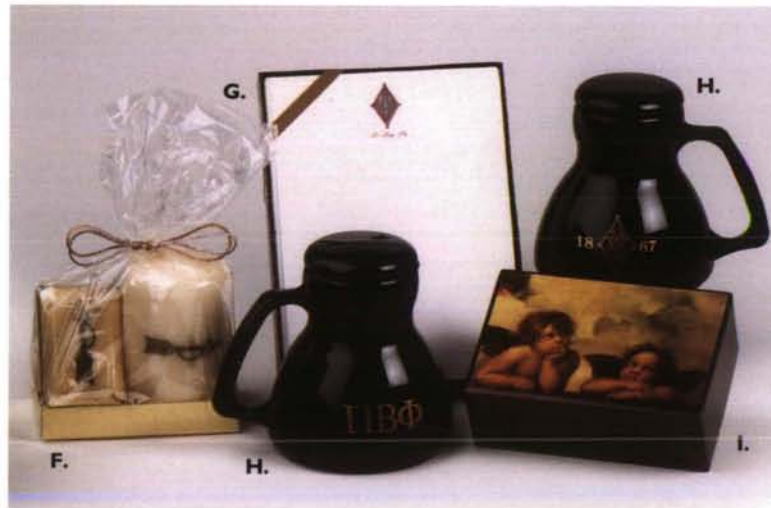
C. Crest T-shirt. L, XL.

T236 \$14.40

D. Pi Phi Facts T-shirt. L, XL.

T127 \$14.00

E. 1997 Angel Ornament. Fourth
in a series of limited edition
collectible ornaments. Gift boxed.
N345 \$12.00



F. Soap and candle set. Gift boxed.

N341 \$12.00

Candle sold separately.

N340 \$8.00

Soap sold separately.

N339 \$3.25

G. Crest stationery. 30 sheets,
20 envelopes.

S153 \$5.00

H. Travel mug. Two-sided design.

N256 \$8.50

I. Wooden angel box.

N323 \$28.00

J. Denim Hat

N197 \$16.00

K. Natural and olive hat

N294 \$18.00

L. Bright Star Designs' framed
three-dimensional work of art.
7 inches X 9 inches.

N260 \$49.00



J.



K.



L.

PI PHI EXPRESS
7730 Carondelet, Suite 333
St. Louis, MO 63105
(800) 322-1867
8:30-4:30 Central Standard Time, Monday-Friday

NAME				
ADDRESS				
CITY/STATE				
DAYTIME PHONE				
SIGNATURE				
VISA <input type="checkbox"/> MC <input type="checkbox"/> #			Exp. Date	
Qty	Description of Item	Color	Cost/Each	Total
SHIPPING RATES: (All orders shipped UPS unless otherwise specified.) \$35.00 and under= \$5.00; \$35.01-\$70.00= \$6.50; \$70.01-\$100.00= \$8.00; Over \$100.00= \$10.00. If different shipping address is desired, please enclose a note.			Merchandise Total	
			MO Residents Add 6.725% Tax	
			Shipping (See chart)	
			TOTAL AMOUNT	

Fast Facts About Pi Beta Phi

Did You Know...

- There are currently 131 Pi Beta Phi Chapters.
- Lehigh University in Bethlehem, Pennsylvania will be the site of our next colony in September 1997.
- The Fraternity's total membership is 191,973.
- Pi Beta Phi has 315 alumnae clubs, 11 junior/night groups, 33 pockets and 4 carnation circles.
- Total number of mailable Pi Beta Phi alumnae is 107,094.
- Total number of undergraduate members is 10,757.
- Last year the Fraternity honored 550 Golden Arrow members and 50 75-year members
- Pi Beta Phi House Corporations maintain \$85 million in property, housing more than 3,500 women.
- Central Office has a staff of 20 employees.
- This year the Pi Beta Phi Foundation awarded 49 scholarships.
- The Foundation has four staff members.
- Central Office has 38,170 members reported as "lost."*

** Help us find our "lost" members. If you know of someone who is not receiving The ARROW, please have her name and address sent to Central Office.*

HAVE YOU MOVED OR CHANGED YOUR NAME?

Initiated Name

New Name (/last/first/middle)

New Address

City/State/Zip

Phone Number

Chapter and Year of Initiation

Clip this form, place in a stamped envelope and send to:
Pi Beta Phi Central Office
7730 Carondelet, Suite 333
St. Louis, MO 63105

Postmaster: Send notice of undeliverable copies to:
Pi Beta Phi Central Office,
7730 Carondelet, Suite 333,
St. Louis, MO 63105

If you are an officer in the Fraternity, please give title so that we may update officer lists.