

# The Arrow

of Pi Beta Phi

Fall • 1998

Every  
Breath  
You  
Take



# Perspective



## Why an issue of *The ARROW* about smoking?

Every two years Pi Beta Phi holds regional Collegiate Leadership Seminars for our undergraduate chapters. Chapter officers are able to attend one of three regional seminars where they share chapter programming ideas, attend an awards banquet and are able to meet in small break-out groups for a session titled "Consults with Council." One of the topics discussed at this year's seminars was undergraduate smoking. Each chapter in attendance was asked to estimate the percentage of members in their chapter who are smokers. Many of our chapter officers estimated that more than 50% of their chapter members smoked. Fraternity officers were shocked at these numbers. So surprised, Grand Council decided to address the topic of smoking in this issue of *The ARROW*.

We would enjoy receiving your thoughts about smoking. Please feel free to contact *The ARROW* with your ideas or comments about this issue.

A very special thank you to Jean Orr Donaldson for her contribution to the feature. Jean is the author of "A Century of Friendship in Pi Beta Phi," and served as Fraternity Historian from 1963-77. She has been a member of Oklahoma Beta's Alumnae Advisory Committee as well as president and panhellenic delegate for the Stillwater Alumnae Club. Jean has attended 16 conventions, receiving the Dorothy Weaver Morgan Award for Fraternity Loyalty at the 1993 Convention.

# Contents

Volume 115 • Number 1



## Features

**4** To smoke or not to smoke.  
Is it a question?

**12** Pi Phi's finest: the  
1997-98 collegiate and  
alumnae award winners.

**40** Province winners of the  
prestigious Amy Bumham  
Onken and Chapter  
Service Awards.

**59** See the new fall line  
of Pi Phi Express  
merchandise.

## Departments

From the Editor	10
From the Reader	11
News from Arrowmont	16
Foundation	18
Rush Information Form	19
Alumnae News	20
Fraternity Directory	27
Internet	39
Collegiate News	44
Links to Literacy	50
Directions	52
In Memoriam	54
Remember	56
News & Notes	57





# Every Breath You Take

If you mention Oklahoma Beta Jean Orr Donaldson to her collegiate and alumnae Pi Phi sisters, they think of a 70-year-old woman who is strong mentally and emotionally. They think of a woman who readily laughs, who loves having parties at her condo, who enjoys her life. They think of a woman who cares about her friends' health as well as her own.

Yet, in college, Jean made the choice to light her first cigarette. Each cigarette she lit did not remind her of the health hazards the smoke brought to those around her and herself. At a penny per cigarette, she did not think of the financial loss. She simply enjoyed the smell, and why not? She only smoked a few cigarettes a week, plus many of her pledge sisters smoked socially, too ...



Years later, Jean began smoking a pack per day. Her doctor urged her to quit, saying her lungs would heal.

And although Jean was slow to take his advice, she did quit smoking. However, 12 years after quitting, Jean has had to start carrying an oxygen tank because her smoking-induced emphysema makes simple tasks like breathing, laughing and walking difficult. Now, she cannot be around smoke, and she regrets not realizing she made nonsmokers uncomfortable throughout her life.

When Jean chose to quit after more than 40 years of smoking, she realized she was partly responsible for the health of those around her every time she lit, or did not light, a cigarette. The friends and family who helped Jean quit realized they had a responsibility to help someone they loved. Jean knew she had a responsibility to help herself be healthy.

Smoking is a difficult issue. It's not illegal for those under 18. It's socially accepted in many places. It's often looked on as trendy or hip. Yet on the flip side, smoking is also dirty, unhealthy and deadly. Jean's situation is one of the more tragic smoking stories, but it's not unusual. Jean made a choice she was entitled to make. After years of smoking her advice now is simply, "don't." But, it's ultimately up to you. It's your life and the life of those around you. It's ultimately your responsibility.

### *Lung cancer kills more women than breast cancer.*

As we heighten our health awareness, we need to look truthfully at smoking. As women, we have a choice to take care of our bodies. We know we need to perform monthly breast self examinations. We know we need to have yearly check-ups to fight against possible ovarian and cervical cancers. But, we don't have a choice whether we contract these different cancers. Yet daily, many women choose to increase their chances of lung cancer and heart disease every time they light a cigarette.

General healthy living is a focus of many women. We exercise religiously, we eat sparingly and yet many women also smoke regularly. Smoking does change your body's metabolic rate, so you do burn calories faster. However, according to Ann Schensky, Education and Outreach Program Director for the Center for Tobacco Research and Intervention of the Department of Medicine at the University of Wisconsin, Madison, you would need to gain 80 to 100 pounds to put the same amount of strain on your heart as smoking a pack of cigarettes.

*There are no ultimate differences in weight between persons who have never smoked and those who have quit.*

For women, the easiest choice is to quit before starting, before getting addicted. Ann says smoking, like any addiction, begins with a choice. "You choose to start, but stopping is clouded by the addiction," she says. According to Ann, tobacco is one of the strongest addicting drugs, more so than cocaine or heroine. Once you are addicted to the nicotine, the other toxins in the cigarette begin to damage your body.

According to a recent article in *Patient Care*, women reported a greater dependency than men both emotionally and physically on cigarettes, once they began to smoke. The same article states that nicotine actually leaves men's bodies more rapidly than women, even after "correction for body weight." Thus women form an attachment to cigarettes much more readily than other groups of smokers.

Our health is vital to our quality of life. As humans, we continue to live longer and more physically fit lives. Resisting the possible urge to pick up a cigarette enhances your life expectancy. As a woman who cares about her body, you are responsible for your body's well-being. As a caring woman who smokes, you are responsible for your friends' and family's health, too.

*Each year secondhand smoke kills an estimated 3,000 adult nonsmokers from lung cancer.*

As humans, we interact and communicate with each other. Throughout college and our lives, Pi Phi has connected us with lifelong friends—friends close enough to call our sisters. Yet when cigarette smoke encircles a lunch table or rises from a group of laughing women, you as a smoker, endanger your friends.

*Secondhand smoke causes 30 times as many lung cancer deaths as all regulated air pollutants combined.*

Although just one cigarette every once in a while does not harm nonsmokers, being around someone who smokes all day in an office or home



is equivalent to an adult nonsmoker smoking five to 10 cigarettes a day, says Ann.

*Compared to nonsmokers, it takes smokers longer to get pregnant.*

Even unborn children are harmed by secondhand smoke. According to "The Growing Problem of Smoking in Women," women who smoke, or are exposed to secondhand smoke, pass carcinogens to their unborn babies that may cause lung, skin, bladder and liver cancer. You care for your child by taking him to the doctor, or giving him medicine when he has a fever. However, when you smoke around your child, you make the choice to expose him to cancer causing agents.

*Children of smokers tend to lag three to five months behind their peers in reading and math abilities.*



“The Stop Smoking Workbook: A Guide to Healthy Quitting” says pneumonia and other upper respiratory tract infections are more common in children under two years old, whose par-

ents smoke. The higher health risks to children stem from their small body weight.

*Secondhand smoke increases the risk of lung cancer in dogs.*

If you smoke light cigarettes hoping to reduce the harmful effects on your body and bodies around you, be careful. Although these cigarettes contain less nicotine, Ann says this often means you will smoke more so that your body receives the same nicotine dosage. Many of these cigarettes have extra holes in the filter, to disseminate the smoke, making them less harmful. However, putting your fingers over the filter negates the extra holes, says Ann.

*In addition to bad breath and brown teeth, smokers are also at risk for developing cancer of the mouth tongue, lips and pharynx.*

Smoking damages more than the human body. One of the most visible signs of smoking is the dirty yellow film left on your teeth, furniture and walls. Plus, the smell soaks into skin, upholstery and clothing. Ann says many smokers think their

laundry is clean until they leave their house. The difference between the smell of virtually clean air and smokey clothes is obvious.

There are endless reasons why, if you smoke, you should take the responsibility to quit. However, nicotine is addictive. For a drug to be addictive, it's user must have a physiological need for the habit-forming drug. Nonsmokers have the responsibility to help friends and family erase this physiological need.

*Fewer than 50% of smokers receive advice or assistance on quitting.*

Some people just stop smoking. But as Mark Twain said, “To cease smoking is the easiest thing I ever did; I ought to know because I've done it a thousand times.” After they have decided they are willing to quit, most smokers need an encouraging group of friends and family to really make cessation successful.

There are a variety of ways to stop smoking, from a nicotine patch or gum, to enrolling in a cessation program. Yet support from those around the smoker is the key to each of these methods. “If you started with your friends, quit with your friends,” says Ann. “Those are the people you need to go to for support.”

*Each year, more than 8,350 people in the United States die of oral cancer directly related to tobacco.*

However, simply telling a friend “smoking is bad for you” or “you need to quit” is not enough. A smoker often needs new activities, since old activities included the habit of lighting a cigarette. If you are going to have a few drinks with a friend who is trying to quit, and she usually drinks and smokes, offer a different outing. Be willing to change plans or activities in order to help your friend feel less vulnerable to her habit.



*Cigarettes cost Americans more than 100 billion dollars annually in tobacco-related health expenses and lost productivity. That's about \$398 per American per year.*

Ann recommends smokers make a list of simple activities to do when the urge to smoke strikes. She suggests including activities such as closing your eyes and concentrating on relaxing, drinking lots of water, chewing on straws, bending paper clips or stretching. Encourage your friend to carry this list with her, so when the urge arises, she doesn't even have to think about what to do—she reads the list.

*Physical withdrawal symptoms from nicotine usually last three to 10 days.*

If your friend has physical withdrawal symptoms for the first few weeks, such as insomnia or excessive coughing, tell her these side effects are normal, and after a few months, she will be feeling better than when she smoked. Encourage her that quitting is worth the difficult stages.

Ann says the addiction is "like a screaming child. If you give him something every time he screams, he keeps screaming." Soon the child is screaming all the time. Remind your friend of her choice to break her addiction and the healthy rewards of the break.

"When you quit, you gain control," says Ann. "You gain health and gain the ability to deal with things in a healthy, alternative way."

Every cigarette you smoke does damage in often irreparable ways—maybe in as little as five years. So whether you are just beginning to smoke, classify yourself as a smoker or don't smoke at all, remember you are responsible as a human and a Pi Phi to care for yourself and for those whom you care about.

### Long-term benefits of quitting:

#### 5-15 years

- Risk of stroke is reduced to that of people who have never smoked.

#### 10 years

- Risk of lung cancer drops to as little as one-half that of continuing smokers.
- Risk of cancer of the mouth, throat, esophagus, bladder, kidney and pancreas decreases.
- Risk of ulcer decreases.

#### 15 years

- Risk of coronary heart disease is now similar to that of people who have never smoked.
- Risk of death returns to nearly the level of people who have never smoked.

### References

"7-Steps to a Smoke-Free Life" by Edwin B. Fisher Jr., Ph.D. with Toni L. Goldfarb

"The Stop Smoking Workbook: Your Guide to Healthy Quitting" by Lori Stevic-Rust, Ph.D. and Anita Maximin, Psy.D.

*Patient Care*, "The Growing Problem of Smoking in Women" by Wendy M Bjornson, MPH, Michael C. Fiore, MD, MPH and Beverly A. Logan-Morrison, MD

"Facts about Secondhand Smoke" and "Secondhand Smoke in Your Home" by the U.S. Department of Health and Human Services

Ann E. Schensky, Education and Outreach Program Director, Center for Tobacco Research and Intervention, Department of Medicine at the University of Wisconsin, Madison

# From the Editor

**Editor—Elizabeth Gilkison Cannon**  
**Assistant Editor—Sara Ellen Bell**

Pi Beta Phi Central Office  
7730 Carondelet, Suite 333  
St. Louis, MO 63105  
(314) 727-7338  
FAX: (314) 727-8049  
www.pibetaphi.org

Address correspondence of an editorial nature to the editor.

#### Copy Deadlines

Spring—Dec. 1      Fall—June 1  
Summer—April 1      Winter—Oct. 1

#### Address Changes and In Memoriam

Pi Beta Phi Central Office  
7730 Carondelet, Suite 333  
St. Louis, MO 63105

The *ARROW of Pi Beta Phi* (USPS 032-540) is published quarterly by Pi Beta Phi Fraternity, 7730 Carondelet, Suite 333, St. Louis, MO 63105-3328. Second class postage paid at St. Louis, MO. POSTMASTER: Send address changes to *The ARROW of Pi Beta Phi*, 7730 Carondelet, Suite 333, St. Louis, MO 63105-3328.

#### Pi Beta Phi Fraternity, ΠΒΦ Founded 1867

Emma Brownlee Kilgore  
Margaret Campbell  
Libbie Brook Gaddis  
Ada Bruen Grier  
Clara Brownlee Hutchinson  
Fannie Whitenack Libbey  
Rosa Moore  
Jennie Nicol, M.D.  
Inez Smith Soule  
Fannie Thomson  
Jennie Horne Turnbull  
Nancy Black Wallace



Member College Fraternity Editors Association

## taking it personally ...

*I will not debate and re-debate the ills of smoking. Do I like smoking? No. Have I ever smoked? Yes. Do I like to be around smokers? No ... however, some people I love very much smoke. My family has struggled with the challenge of trying to encourage someone to quit smoking. There have been some successes, but more failures. This scene is played out in many families over and over again.*

*Why do people insist on doing something that is so unhealthy? What will make them stop smoking?*

*Motherhood has given me a different insight into many topics. I am driven to tears each time any violence toward children is portrayed on television. I look both ways twice before I cross the street. I always fasten my seat belt. And I never say goodbye to someone I love without telling them that I love them. In the midst of all of this, I know that I have the responsibility of instilling in my daughter the realization that there are things in life that cannot be controlled. I owe it to her, to be a healthy parent, to lead by example. I owe it to my child, and to my family, to not smoke.*

*Maybe I did enjoy the occasional cigarette in social situations. Did I ever consider myself a "smoker"? No. Should I have considered myself a smoker? Yes. I now understand that it is not about the quantity that is smoked. A smoker is someone who smokes.*

*I realize the choices I make in my life affect many people. Each of us is part of a family unit. Whether a conventional, traditional family or a family in the broadest sense, we owe it to our "family" to be healthy and to control those things that we can.*

*Smoking is a personal choice. I chose family over a habit. I chose to be a better, healthier person for my daughter. Before you take your next puff, think about somebody who loves you. Don't you owe it to them to be healthy? Are you making the right choice?*

—Libby Gilkison Cannon

The ARROW invites comments about the magazine, its articles or any other topic of interest to our readers. In order for your letter to be published, please include full name, address and chapter of initiation. Letters may be edited for style, clarity and length. The address is 7730 Carondelet, Suite 333, St. Louis, MO, 63105 or e-mail at [thearrow@primary.net](mailto:thearrow@primary.net).

## Summer ARROW

I've been receiving *The ARROW* for over 50 years and this summer of 1998 is so outstanding that I want to thank you. The content and layout is interesting. But the charming sketches by Katie Pieper were what I enjoyed. With that kind of talent, I hope art will be her life's pursuit.

JOYCE ORLOB EVANS  
UTAH ALPHA  
SALT LAKE CITY, UTAH

Just a note of congratulations on the best issue of *The ARROW* yet! I was especially delighted with the recurring hat motif.

What can you tell me about the marvelous watercolorist who did these charmingly simple and extremely feminine chapeaux? They spoke of femininity and summertime, a perfect touch for your fine issue on alumnae.

Evelyn Peters Kyle's poem, "Loyal Ties," on page 6, says it all! Yes, Pi Phi is there forever and ever. I am thinking of moving to Ann Arbor, Michigan. I contacted Central Office to find the name of the president of the alumnae club and I wrote to her. She telephoned me. She is a real estate agent and is going to help me find a home.

Thanks again for a marvelous issue. I devoured every page.

JO ANN DAVIDSON STEGGERDA  
ILLINOIS ZETA  
CHAMPAIGN, ILLINOIS

The letter from Grand Vice President of Alumnae Carolyn Pavletich Lesh in the Summer 1998 issue of *The ARROW* touched me in ways you cannot know.

I would never have gotten to know and love a Colorado Alpha if it had not been for our mutual involvement in the Honolulu, Hawaii Alumnae Club.

When I first met Colleen Susu Leong Markham, I thought she was a lovely person and a good Pi Phi. I enjoyed her company and watching her young family grow.

Little did I know this woman, young enough to be my daughter, would swing into action and become a lifesaver to me when my husband died on my 50th birthday.

In the 10 years that have followed, she and her family have included me in their activities, and since my grown children happened to both be gone from the islands most of the time, I became Aunt Ger to her two children, had Mother's Day with them, and was the recipient of many laboriously printed children's notes and fond wishes. Her husband has even become my attorney, helping me with the legal changes in my life.

Carolyn's article meant a lot to me, because for 40 years I have known the golden chain of friendship through Pi Phi, but never as dramatically as the last ten, when a Pi Phi angel enfolded me in her wings and said "you're always helping others, let me help you."

GERALDINE DeBENEDETTI  
NEVADA ALPHA  
HONOLULU, HAWAII

Hats off to you and all the dedicated staff of *The ARROW* for absolutely the best issue ever! Totally motivating on all levels. I am so proud to be a Pi Phi!

JOAN ADAMS AVIS  
ILLINOIS ETA  
DECATUR, ILLINOIS

I just got *The ARROW* and read your lead article. I can't agree with you more. I commend all the alumnae who continue to participate in Pi Phi. It has certainly been very fulfilling for me.

BETH GREINER MICKELSON  
OHIO ALPHA  
EATON, OHIO

I just loved the latest issue of *The ARROW*. It made me realize how much I miss being in an alumnae club. I was president of the Contra Costa, California Alumnae Club more than ten years ago, and was hoping to get involved once again.

ANDREA ANDREWS VENTRIS  
COLORADO ALPHA  
SAN RAFAEL, CALIFORNIA

# From the Reader

# Award

## Winners



### Collegiate Awards

**BALFOUR CUP** (Top Chapter)—Texas Eta (Texas A & M University)

**STOOLMAN VASE** (2nd)—Oklahoma Beta (Oklahoma State University)

**PHILADELPHIA BOWL** (3rd)—Kansas Beta (Kansas State University)

**DIRECTORS' AWARD** (4th)—Tennessee Beta (Vanderbilt University)

**JO ANN MINOR RODERICK CHAPTERS OF EXCELLENCE** (excluding top four)—Florida Alpha (Stetson University), Iowa Beta (Simpson College), Iowa Gamma (Iowa State University), Michigan Alpha (Hillsdale College), Tennessee Delta (University of Tennessee) and Virginia Eta (University of Richmond)

**ANNETTE MITCHELL MILLS AWARD** (New Chapter Achievement)—Virginia Theta (Washington & Lee University); HM: Nebraska Gamma (Creighton University)

#### APP AWARD FOR SENIOR

**PROGRAMMING**—New Mexico Alpha (University of New Mexico); HM: California Beta (University of California, Berkeley) and California Mu (Pepperdine University)

**NITA HILL STARK AWARD** (Best Chapter History)—Ohio Theta (Bowling Green State University)

**HISTORIAN'S VASE** (2nd Best History)—Montana Alpha (Montana State University); HM: California Theta (University of California, Davis), California Mu (Pepperdine University) and Oklahoma Alpha (University of Oklahoma)

**CENTENNIAL AWARD** (Best Fraternity Orientation)—Virginia Zeta (Virginia Polytechnic Institute and State University); HM: Oklahoma Beta (Oklahoma State University) and Connecticut Alpha (University of Connecticut)

**PI PHI SPIRIT AWARD**—Arizona Alpha (University of Arizona), Illinois Zeta

(University of Illinois), Nevada Alpha (University of Nevada), New Mexico Alpha (University of New Mexico), North Dakota Alpha (University of North Dakota), Ohio Alpha (Ohio University), Oklahoma Alpha (University of Oklahoma), Texas Zeta (Baylor University), Virginia Delta (Old Dominion University) and Virginia Theta (Washington & Lee University)

**LINKS TO LITERACY AWARD**—Wyoming Alpha (University of Wyoming); HM: Arizona Beta (Arizona State University)

**HELEN ANDERSON LEWIS AWARD** (Community Service)—Texas Gamma (Texas Tech University); HM: Oklahoma Beta (Oklahoma State University)

**LUCILE D. CARSON AWARD** (Community Service)—Illinois Zeta (University of Illinois); HM: Michigan Epsilon (Western Michigan University)

**D.C. ALPHA PANHELLENIC AWARD LARGE**—Arizona Alpha (University of Arizona); HM: Illinois Zeta (University of Illinois) and Iowa Gamma (Iowa State University)

**SMALL**—Arkansas Alpha (University of Arkansas); HM: New Mexico Alpha (University of New Mexico) and Mississippi Alpha (University of Southern Mississippi)

**ELIZABETH S. KOZA AWARD** (1st Standards)—Virginia Eta (University of Richmond)

**HARRIETTE W. EVANS AWARD** (2nd Standards)—Florida Alpha (Stetson University); HM: Missouri Alpha (University of Missouri) and Missouri Gamma (Drury College)

**FRANCES ROSSER BROWN AWARD** (Fraternity Heritage)—Alabama Beta (University of Alabama); HM: Missouri Alpha (University of Missouri) and Texas Eta (Texas A & M University)

**LILLIAN BECK HOLTON AWARD** (Best House Manager)—Courtney Beck, Michigan Beta (University of Michigan); HM: Renee Purdy, Oregon Gamma (Willamette University) and Laura Veazey, Oklahoma Alpha (University of Oklahoma)

**MARILYN SIMPSON FORD AWARD** (Best ARROW Correspondent)—Ashley Youle, Kansas Beta (Kansas State University); HM: Tara Orkney, Connecticut Alpha (University of Connecticut) and Jessica Miles, Wisconsin Alpha (University of Wisconsin)

**MAY L. KELLER AWARD** (Best Arrowmont Programming)—Michigan Alpha (Hillsdale College); HM: Georgia Alpha (University of Georgia) and Missouri Alpha (University of Missouri)

**OLIVIA SMITH MOORE SILVER SLIPPER** (Best Chapter Treasurer)—Sara Stevens, Illinois Theta (Bradley University); HM: Piper Stills, Missouri Gamma (Drury College) and Aimee Reed, Minnesota Alpha (University of Minnesota)

**VERA MOSS BOWL** (Most Improved S & S)—Colorado Alpha (University of Colorado)

**SARAHJANE P. VANASSE PITCHER** (2nd Improved S & S)—California Zeta (University of California, Santa Barbara)

**ALICE WEBER JOHNSON BOWL** (Top Ten in S & S, Last Ten Years)—Texas Eta (Texas A & M University)

**GRAND COUNCIL SCHOLARSHIP INCENTIVE** (Most Academically Improved Small Chapter)—Indiana Eta (Indiana-Purdue University at Fort Wayne); HM: Minnesota Alpha (University of Minnesota) and Pennsylvania Zeta (Washington & Jefferson College)



**WESTCHESTER CLUB AWARD** (*Most Academically Improved Large Chapter*)—Ohio Epsilon (University of Toledo); HM: Indiana Alpha (Franklin College) and Nevada Alpha (University of Nevada)

**PI BETA PHI SCHOLARSHIP PLAQUE** (*Highest GPA, Large Chapter*)—Virginia Epsilon (University of Virginia); HM: New Jersey Alpha (Princeton University) and Virginia Theta (Washington & Lee University)

**DR. HAZEL R. MCCUAIG AWARD** (*Highest GPA, Small Chapter*)—Connecticut Beta (Yale University); HM: Pennsylvania Zeta (Washington & Jefferson College) and Iowa Beta (Simpson College)

**MCCUAIG CANADIAN AWARD** (*Highest GPA, Canadian Chapter*)—Ontario Alpha (University of Toronto)

**ADDA P. WILLIAMS AWARD** (*Best Academic Excellence Chairman*)—Teri Binkoski, West Virginia Alpha (West Virginia University); HM: Jamie Feist, Montana Alpha (Montana State University) and Taylor Kepler, Texas Beta (Southern Methodist University)

## Alumnae Awards

**IDEAL CLUB AWARD**—Northern Virginia

**TOP TEN ALUMNAE CLUBS**—Colorado Springs, Colorado; Dallas, Texas; Houston, Texas; Kansas City, Missouri-Shawnee Mission, Kansas; La Jolla, California; Manchester Area, Connecticut; Nashville, Tennessee; Oklahoma City, Oklahoma and South Coast, California

**EMERGING EXCELLENCE AWARD**—Louisville, Kentucky; HM: Des Moines, Iowa

**BEST CHAPTER/CLUB RELATIONS AWARD**—Indianola, Iowa; HM: Manchester Area, Connecticut and Nashville, Tennessee

**HOUSTON ALUMNAE CLUB LINKS TO LITERACY AWARD**—Kansas City, Missouri-Shawnee Mission, Kansas; HM: Katy, Texas

**EXCELLENCE IN COMMUNICATION AWARD**—Akron, Ohio; Austin, Texas; Chicago Windy City, Illinois; Colorado Rocky Mountain, Colorado; Jefferson County, Colorado; La Canada, California; La Jolla, California; New Orleans, Louisiana; Oklahoma City, Oklahoma; Orlando-Winter Park, Florida; Palo Alto, California; Seattle, Washington; Southern Fairfield County, Connecticut; Southern New Jersey; Tucson, Arizona and Tulsa, Oklahoma

**MARIANNE REID WILD AWARD** (*Greatest Increase in Membership*)—Denver, Colorado

*Membership Highest Percent of Potential:*  
Under 50—Duncan, Oklahoma  
51 to 100—Hutchinson, Kansas  
101 to 150—Tyler, Texas  
151 to 250—Southwest Florida  
251 to 600—Fort Worth, Texas  
More than 601—Houston, Texas

**D.C. ALPHA AWARD FOR AAC**—New Mexico Alpha, (University of New Mexico); HM: Indiana Gamma (Butler University) and Georgia Alpha (University of Georgia)

**CAROL INGE WARREN AWARD** (*AAC Financial Advisor*)—Andrea Tew, Kentucky Beta (University of Kentucky); HM: Carol Atteberry, Missouri Gamma (Drury College) and Vicki Sivesind, Iowa Gamma (Iowa State University)

**SARA SHIPLEY BOWERS AWARD** (*House Corporation*)—California Zeta (University of California, Santa Barbara) and Illinois Epsilon (Northwestern University); HM: Ohio Theta (Bowling Green State University) and Kansas Beta (Kansas State University)

LEFT TO RIGHT:

**AMY BURNHAM ONKEN AWARD**—Renee Hamel, Oklahoma Alpha (University of Oklahoma)

**CHAPTER SERVICE AWARD**—Casey Cole, Alabama Beta (University of Alabama)

**JEAN WIRTHS SCOTT AWARD** (*Individual Leadership*)—Tiffany Kingery, Ohio Epsilon (University of Toledo)

**EVELYN PETERS KYLE AWARD** (*Alumnae Club Service*)—Nancy Johnson Ankdam, Washington Alpha (University of Washington)

**EMMA HARPER TURNER AWARD** (*Alumnae Club Leadership*)—Donna Lathrop Fontaine, Minnesota Alpha (University of Minnesota)

## 1998 Leadership Seminars— “Leadership ... Toward 2000 Together”

The 1998 Leadership Seminars were a time of learning leadership skills and renewing Pi Phi spirit for collegians and alumnae. Attendees included representatives from all 132 Pi Beta Phi chapters and one Pi Beta Phi colony. Collegians were joined by members of their Alumnae Advisory Committees, and by members of their Chapter House Corporations who attended House Corporation sessions. Attendance at the three seminars totaled more than 626. Seminars were held at Duquesne University June 26–28, the University of Utah July 10–12 and the University of Memphis July 17–19.

Seminar agendas covered various aspects of chapter programming with emphasis given to developing leadership skills and effective risk management. Participants also enjoyed province meetings, a Cookie Shine, an awards banquet and a keynote address by Ohio Beta Barbie Tootle. Barbie, whose address was titled “Effective Leadership,” is presently Director of Special Projects for the Office of the President of The Ohio State University.

A special thanks to the Pi Beta Phi Foundation for sponsoring Barbie Tootle and providing a grant to fund educational portions of the seminars.



**Stoolman Vase—Oklahoma Beta (Jennifer Hill), Balfour Cup—Texas Eta (Ashley Schilhab), Directors' Award—Tennessee Beta (Jennifer Mendillo)**



**Historian's Vase—Montana Alpha (Mila Gaub), Alumnae Province Presidents' Award—New Mexico Alpha (Meredith Ford), Philadelphia Bowl—Kansas Beta (Melissa Marvel)**



**Jo Ann Minor Roderick Chapters of Excellence Award—Michigan Alpha (Amy Byrd), Jean Wirths Scott Award—Tiffany Kingery, Ohio Epsilon (Meghan Perry), Nita Hill Stark Award—Ohio Theta (Sandra Karlen)**



**Jo Ann Minor Roderick Chapters of Excellence Award—Florida Alpha (Veronica Vucho), Tennessee Delta (Corrie Martin), Iowa Beta (Sarah Lottridge), Iowa Gamma (Stephanie Beane), Virginia Eta (Sarah Barnes)**



**Pi Phi Spirit Award—New Mexico Alpha (Meredith Ford), Nevada Alpha (Stephanie Hardie), North Dakota Alpha (Megan Stroh), Arizona Alpha (Amy Anders)**



**Pi Phi Spirit Award—Ohio Alpha (Tanya Szumlic), May L. Keller Award—Michigan Alpha (Amy Byrd), Pi Phi Spirit Award—Illinois Zeta (Stacy Dunton)**

*Names in parentheses are those photographed.*

# 1998 Leadership Seminars



**Pi Phi Spirit Award—Oklahoma Alpha (Emily Hewitt), Texas Zeta (Marissa Mariner), Virginia Delta (Robynn Stokes), Virginia Theta (Mary Kathryn Williams)**



**Olivia S. Moore Silver Slipper—Sara Stevens, Illinois Theta (Whitney Kirby), Sara Shipley Bowers Award—Illinois Epsilon (Kara Kunz), Lucile D. Carson Award—Illinois Zeta (Stacy Dunton)**



**Frances R. Brown Award—Alabama Beta (Ashley Gnemi), Elizabeth S. Koza Award—Virginia Eta (Sarah Barnes), Helen A. Lewis Award—Texas Gamma (Christy Andrews), D.C. Alpha Award for Small Panhellenic—Arkansas Alpha (Katherine Jones), Harriette W. Evans Award—Florida Alpha (Veronica Vucho)**



**Chapter Service Award—Casey Cole, Alabama Beta (Ashley Gnemi), Amy Burnham Onken Award—Renee Hamel, Oklahoma Alpha (Emily Hewitt), Annette Mitchell Mills—Virginia Theta (Mary Kathryn Williams), Centennial Award—Virginia Zeta (Moya Toohey)**



**Adda P. Williams Award—Teri Binkoski, West Virginia Alpha, Pi Beta Phi Scholarship Plaque—Virginia Epsilon (Jennie Sittig), Alice W. Johnson Bowl—Texas Eta (Ashley Schilhab), Carol Inge Warren Award—Andrea Tew, Kentucky Beta**



**Marilyn Simpson Ford Award—Ashley Youle, Kansas Beta (Melissa Marvel), D.C. Alpha Award for Large Panhellenic—Arizona Alpha (Amy Anders), Sarahjane P. Vanasse Pitcher—California Zeta (Jennifer Bills), Vera Moss Bowl—Colorado Alpha (Kate Julian), Links to Literacy Award—Wyoming Alpha (Lindsey Lee)**



**D.C. Alpha Award for AAC—New Mexico Alpha (Meredith Ford), Sara Shipley Bowers Award—California Zeta (Jennifer Bills)**



**Grand Council Scholarship Incentive—Indiana Eta (Christie Moss), Westchester Club Award—Ohio Epsilon (Meghan Perry), McCuaig Canadian Award—Ontario Alpha (Monica Diaz), Dr. Hazel R. McCuaig—Connecticut Beta (Katherine Ivers)**

Not pictured: Lillian B. Holton—Michigan Beta

Leadership ...  
Toward **2000** Together

# News from Arrowmont

by Gretchen Church



Alberta Alpha Aileen Aylsworth Welgan with close friends who flew to Gatlinburg to attend the dedication ceremony. Seated (left to right): Dan Knapp, Sam Sutherland and his wife Washington Alpha Judy Smythe Sutherland, Aileen Welgan and Roger Bass.

## Aileen Welgan Memorial Fountain Dedicated

A memorial fountain has been designed and installed at Arrowmont School of Arts and Crafts in memory of former Board Chairman and Alberta Alpha Hesperia ("Hep") Aylsworth Henderson. Alberta Alpha Aileen Aylsworth Welgan commissioned the work in honor of her late sister.

Hep was a Pi Beta Phi convention initiate in 1964 in Victoria, British



Alberta Alpha Aileen Aylsworth Welgan at the fountain dedication ceremony, Saturday, May 2, 1998.

Columbia, and an Arrowmont Board Chairman from 1970-72. Hep and Aileen had envisioned a fountain at Arrowmont, but it never came to fruition. Hep passed away in July, 1981.

"Originally, in 1970, Hep and I wanted to bring the lasting beauty of a fountain to the first new Arrowmont building just as the architect Hubert Bebb had envisioned," Aileen explained. "Now, in 1998, I want to add a remembrance of my sister who gave sterling service in the early formative years of Arrowmont."

Located on the second level of Arrowmont's main educational facility, the fountain consists of three carved and sculpted limestone vessels in a circular pool that is filled with river rock from Gatlinburg. The limestone fountain forms, entitled "Woven Stone Vessels," were designed and created by Clarksville, Tennessee, artist Tom Rice. Each vessel is embellished with designs influenced by early weaving patterns.

A graduate of the University of Tennessee at Knoxville, Tom was a student and assistant in several post-graduate courses at Arrowmont. He teaches at Cheatham County Central High

School in Ashland, Tennessee, and maintains a studio in Clarksville. His works are in private, corporate and public collections throughout the world.

Sandra Blain, Arrowmont's director, has expressed enthusiasm for the fountain installation. "It not only provides a rich aesthetic addition to a facility already imbued with a creative spirit, but allows recognition of an individual immersed in Arrowmont's history.

Using a regional sculptor with the status of Tom Rice, with his previous ties to the school, makes the installation that much more personal."

The fountain was officially dedicated at a reception during Pi Phi Arts Weekend, on Saturday, May 2, 1998, with Aileen and members of her family, Tom, Pi Beta Phi members and other friends in attendance.

### Attention Artists!

**Who:** You

**What:** Arrowmont National 1999 Juried Exhibition

**Where:** The Main Gallery, Arrowmont School of Arts and Crafts, Gatlinburg, Tennessee

**When:** February 26-May 15

**How ...** For an entry form, send a self-addressed, stamped envelope to Billi R.S. Rothove at Arrowmont School of Arts and Crafts, PO Box 567, Gatlinburg, TN 37738 or call (423) 436-5860. Send slides and entry materials to Arrowmont by November 6, 1998.

*The show will be juried by Joanne Rapp, owner and director, The Hand & The Spirit gallery in Scottsdale, AZ.*



Find out about Arrowmont events and class schedules at our new web site at [www.arrowmont.org](http://www.arrowmont.org). Keep in touch via e-mail at [arrowmnt@aol.com](mailto:arrowmnt@aol.com).

# News from Arrowmont

www.arrowmont.org

## Arrowmont's Traveling Collection Visits Ocean Springs



**Pat Emens Anderson, Betty Wainscott Kirk, Kay Cromb Brada, Jane Hainkel Drennan, Kitsie Barkley Roth, Bunny Ward and Nancy Morarity Michiels visited Arrowmont's Traveling Collection.**

The 50th Anniversary Traveling Collection was exhibited at the Walter Anderson Museum of Art in Ocean Springs, Mississippi, February 15–April 15, 1998. The Mississippi Gulf Coast Alumnae Club helped the museum promote the exhibit, and the reception chairman was Mississippi Alpha Kathryn Schledwitz Lewis. Louisiana Beta Kitsie Barkley Roth, former Xi Alumnae Province President, coordinated the efforts concerning all events related to the exhibition.

Established in 1995, the 50th Anniversary Traveling Collection contains more than 100 objects and commemorates 50 years of successful educational programming at Arrowmont. Purposes of the Traveling Collection include expanding Arrowmont's educational outreach and extending the school's mission of "enriching lives through art" by providing a collection of quality artwork to surrounding communities.

## 1998 Pi Phi Arts Weekend

The 1998 Pi Phi Arts Weekend was successful with more than 75 students in seven classes. Dates for the next Pi Phi Arts Weekend are April 29–May 2, 1999. Brochures will be available in late fall.

"I have been truly enlightened by my class and this experience at Arrowmont," said Arkansas Beta Nancy Fogle Pollard. "It gave me a whole new perspective about our philanthropy and what Arrowmont is all about."



**Arkansas Beta Nancy Fogle Pollard puts the finishing touches on a stained glass arrow she created.**



**Grand Vice President of Collegians, Sarah Ruth "Sis" Mullis turns a wooden vessel.**



**Instructor Kim Keats (left) helps Arkansas Alpha Patty Shelton Pyle (right) start a basket.**

## Contributions received from June 1, 1997–May 31, 1998

### Top Ten Clubs

1. Nashville, Tennessee	\$50,800
2. St. Louis, Missouri	15,100
3. Houston, Texas	3,515
4. Kansas City, Missouri— Shawnee Mission, Kansas	2,000
5. Wichita, Kansas	2,000
6. Oklahoma City, Oklahoma	1,000
7. Philadelphia—Main Line	1,000
8. South Bay, California	1,000
9. Tulsa, Oklahoma	825
10. Arlington Heights, Illinois	600

\* These amounts do not include capital campaign pledges

### Top Ten Chapters

1. Texas Alpha	\$4,038
2. Illinois Theta	3,046
3. Texas Delta	3,000
4. Arizona Alpha	2,720
5. Indiana Delta	2,519
6. Florida Delta	2,518
7. Georgia Alpha	2,500
8. Texas Beta	2,000
9. Texas Zeta	2,000
10. Texas Eta	2,000

# Pi Beta Phi Foundation

## Leadership Funds Established

Funding programs which promote the leadership development of Pi Phis is an important part of the mission of the Pi Beta Phi Foundation. Through their generous gifts, recent donors have established within the Foundation two endowments dedicated to leadership education. The Foundation is grateful for this support of its mission.

### **Mary Ann Behlen Hruska Creates New Fund**



Mary Ann Behlen Hruska, a founding Pi Beta Phi Foundation Trustee and a current Arrowmont Board of Governors member, has created the Mary Ann Behlen Hruska Leadership Program Development Endowment.

This unique endowment will provide the Fraternity with funds for qualifying aspects of leadership education program planning and development, including, but not limited to, the investigation of ideas, consulting with professionals in the field, Fraternity officer or staff involvement and materials necessary for implementation.

"The skills we learn as chapter and alumnae club officers are transferrable to all areas of our lives," explained Mary Ann, a Nebraska Beta. "I hope to promote programming which teaches the basic principles of leadership including ethics, trustworthiness, responsibility and citizenship."

Individuals who wish to provide support for the development of the Fraternity's leadership programming are welcome to make gifts to the Foundation designated for the Hruska Endowment.

### **Kevin and Janice Kincaid Clifford Endow Indiana Delta CLEE**

A Chapter Leadership Education Endowment (CLEE) has been established to benefit the Indiana Delta Chapter at Purdue University. The endowment was created through a gift to the Pi Beta Phi Foundation from Kevin G. and Janice Kincaid Clifford, Indiana Delta.

The CLEE provides Indiana Delta with permanent funding for qualifying portions of Pi Beta Phi leadership education and training. As a former collegiate province president, Jan Clifford knows the impact Pi Beta Phi conventions and leadership seminars can have on chapter officers. "They learn so much when they see beyond their chapter, beyond their campus," shared Jan.

A CLEE may be established through a one-time gift or through a gift pledged over a three-year period. A CLEE is an investment in the future of a chapter. Such funds support proper training for our collegiate leaders thereby cultivating their leadership potential.

Leadership training benefits the individual, the chapter, the international Fraternity and, ultimately, the greater society.

Currently, five chapters have fully funded CLEEs. They are California Alpha, Indiana Delta, Iowa Zeta, Texas Alpha and Texas Beta. Kansas Alpha will join this group upon the completion of a donor's pledge. Chapters, alumnae clubs or individuals who are interested in learning more about establishing a CLEE should contact the Foundation Office.

## The Future is Yours to Give

You can provide for your chapter's future. Chapter Leadership Education Endowments may be funded by an individual, a chapter, an alumnae club or any special group interested in shaping Pi Beta Phi's future leaders. Contact the Foundation Office for more information.

## Web Site

Browse the Foundation section of Pi Beta Phi's official web site ([www.pibetaphi.org](http://www.pibetaphi.org)) by choosing "Possibilities" from the navigation bar. Information on scholarships, the Emma Harper Turner Fund and much more may be found within the site.

# Rush Information Form (RIF)

Rush Information Forms are to be used by alumnae members only. An address for each chapter is listed as part of the Fall Directory (page 29). RIFs may be sent to the attention of the Chapter Membership Chairman.

**Beginning in 1999, chapter addresses will be listed in the Summer ARROW.**

Name of Rushee \_\_\_\_\_ Attending \_\_\_\_\_ College \_\_\_\_\_

Home Address \_\_\_\_\_  
Street \_\_\_\_\_ City \_\_\_\_\_ State \_\_\_\_\_ Zip \_\_\_\_\_

Year in College:  Freshman  Sophomore  Junior  Senior

If transfer student: College attended \_\_\_\_\_ College GPA \_\_\_\_\_

High School attended \_\_\_\_\_  
Name \_\_\_\_\_ City \_\_\_\_\_ State \_\_\_\_\_ Zip \_\_\_\_\_

Class Size \_\_\_\_\_ Rank \_\_\_\_\_ GPA \_\_\_\_\_ SAT/ACT (if known) \_\_\_\_\_

Parent or Guardian \_\_\_\_\_

Pi Beta Phi Relatives \_\_\_\_\_  
(sister, mother, grandmother)

Other Greek Affiliated Relatives \_\_\_\_\_

Please check ONE of the following:

Wish to highly recommend  Wish to recommend

Please check ONE of the following:

Known personally by an alumna (if so, how long?) \_\_\_\_\_

Only factual information included. Source of information \_\_\_\_\_

Other \_\_\_\_\_

Signed \_\_\_\_\_  
Individual Pi Beta Phi Alumna

Address \_\_\_\_\_  
Street \_\_\_\_\_ City \_\_\_\_\_ State \_\_\_\_\_ Zip \_\_\_\_\_

Telephone \_\_\_\_\_ Date \_\_\_\_\_  
Area Code \_\_\_\_\_ Number \_\_\_\_\_

LIST SCHOOL AND COMMUNITY ACTIVITIES AND HONORS: (Attach another sheet if needed.)  
Comment on special interests, talents, leadership qualities, personality.

# Alumnae News



**OREGON BETA JENNIFER L. DORN** is the new National Health Museum President. C. Everett Koop, Chairman of the Museum's Board of Trustees, appointed Jennifer to the position. She was a 1973 journalism graduate from the University of Oregon. She also sits on the Board of Trustees of the National Academy of Public Administration. As the museum's president, Jennifer is working to increase the nation's health awareness at the National Mall, on the Internet and in schools throughout America. Twenty million people visit the Washington D.C. museum every year.

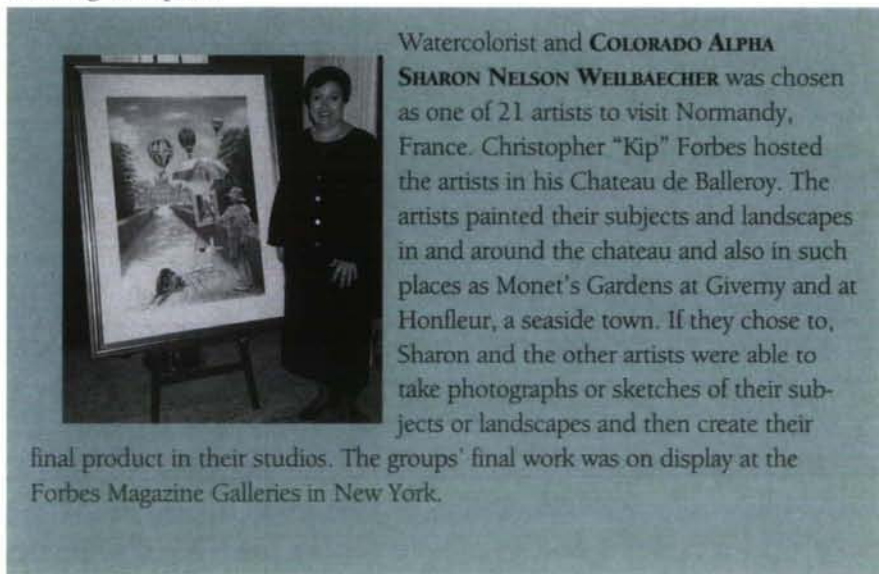
**NORTH DAKOTA ALPHA LOREE VIVATSON KORB** was featured in Quincy, Illinois' local newspaper for her outstanding volunteerism. Loree serves her community through the school system and numerous organizations. She is a Quincy Foundation for Quality Education trustee and serves on the Policy Committee for Quincy Public Schools. She has chaired the Quincy High School Showcase of Excellence twice, and is on the Quincy Symphony Orchestra Association Board.

On March 27 **NEW YORK ALPHA MEGAN RIEGER** followed her family's Pi Phi tradition. Megan's grandmother, Illinois Epsilon Mary Sutter Zick, mother, Iowa Beta Sharon Zick Rieger and aunt, Texas Beta Catherine Blair Zick joined her as she was initiated.

**BELLEVUE-EASTSIDE AND SEATTLE ALUMNAE CLUB** members were busy this past spring. They celebrated Founders' Day in Seattle with inspirational speeches and songs. The Seattle Alumnae Club hosted the event. Washington Gamma Luellen Clymo Smith and Washington Alpha Melissa Roberts Holmes heard California Delta MarKay Hannum Neumann speak about collegiate-alumnae relations while representing the club at the Regional Leadership Retreat at Maryhurst College. Luellen and Melissa were again representatives at the Seattle Alumnae Club's Senior Send-Off Dinner for the Washington Alphas. The Bellevue-Eastside Alumnae Club also held a Cookie Shine with the Washington Alphas.

Thirteen **COLORADO AREA ALUMNAE GROUPS** celebrated Founders' Day on April 25 in Denver, Colorado. Three active chapters, Colorado Alpha, Colorado Gamma and Colorado Delta as well as nine Golden Arrow initiates of 1948 joined the clubs to total 275 women at the celebration. The keynote speaker, Kansas Beta and Golden Arrow Frances Allison Weaver, shared humorous and insightful anecdotes from her book, "The Girls with the Grandmother Faces: A Celebration of Life's Potential for those Over 55." Special guests included: Grand Vice President of Alumnae Carolyn Pavletich Lesh, Director of Alumnae Programming Susan Landreth Fry, Director of Alumnae Advisory Committees Linda Noel Ibsen and former Director of Chapter Support Jo Scholes Hill.

**SLIDELL, LOUISIANA ALUMNAE CLUB** members hosted a spring Panhellenic Rush tea.



Watercolorist and **COLORADO ALPHA SHARON NELSON WEILBAECHER** was chosen as one of 21 artists to visit Normandy, France. Christopher "Kip" Forbes hosted the artists in his Chateau de Balleroy. The artists painted their subjects and landscapes in and around the chateau and also in such places as Monet's Gardens at Giverny and at Honfleur, a seaside town. If they chose to, Sharon and the other artists were able to take photographs or sketches of their subjects or landscapes and then create their final product in their studios. The groups' final work was on display at the Forbes Magazine Galleries in New York.



**MICHIGAN BETA ELIZABETH SHAW GESCHIEDLE** was appointed as the International Food Safety Council's Vice President. As vice president, Elizabeth's duties will include day-to-day council management as well as maintaining sponsor relationships. Elizabeth received her undergraduate degree in communications from the University of Michigan and stayed involved with the university. She previously served both as president of the university's Club of Chicago and as the national secretary for the university's Alumni Association in Ann Arbor, Michigan. Elizabeth also has served on the board of directors for the Multicultural Foodservice and Hospitality Alliance. She is a current Women's Foodservice Forum member and is active in the International Foodservice Manufacturers Association.

**PHOENIX, ARIZONA ALUMNAE CLUB** members held an ice cream social for Arizona Beta new members. Arizona Alpha and Golden Arrow Frances Martin Andrews entertained both alumnae and collegians with her humor. She also educated the group through sharing her scrapbook.

**MARYLAND ALPHA JANICE MARTIN BENARIO** recently published an article in "The Classical Bulletin" about her experience as a WAVE officer in World War II. During the war, Janice worked with a group on a top secret mission in which they used enigma codes to track submarines. This elite group received a Presidential Unit Citation for its success.

**CONNECTICUT ALPHA PHYLLIS VALENTI McMAHON** was named one of Connecticut's Educators of the Year. While teaching for 25 years, Phyllis has helped many adult students expand their education.

The **VALLEY OF THE MOON, CALIFORNIA ALUMNAE CLUB** celebrated Founders' Day April 22. The members enjoyed Kansas Alpha Adrienne Hiscox Mitchell's speech on Pi Phi's beginning, growth and traditions. During the celebration, members held a candle-lighting ceremony. Two members, Oregon Gamma Pauline Morse Rock and Nevada Alpha Sara Gaston Siler, were given Golden Arrow pins. It wasn't the first time Nevada Alpha Barbara Gould Hoffman had presented Sara with a pin. As chapter president, Barbara initiated Sara in 1948.

The Texas A & M Panhellenic Council will be giving an annual scholarship in **TEXAS ALPHA BETTY BENBOW WESTBROOK'S** name. Betty was instrumental in establishing the Texas Eta chapter as well as serving as its Alumnae Advisory Committee Chairman. She also served as the Panhellenic Financial Adviser.

**ABOVE LEFT: For their Founders' Day luncheon, Southern Fairfield County, Connecticut Alumnae Club members welcomed Grand Vice President of Finance Lou Ann Montgomery Carter as the luncheon's guest speaker. Lou Ann served as the club's president from 1980-82. The Westchester County, New York Alumnae Club joined in the celebration. Both groups honored their Golden Arrow members. A special honor was given to D.C. Alpha Sophia Waldman Brumbaugh. Sophia is a 75-year member and an inspiration to her fellow Pi Phi sisters.**

**ABOVE CENTER: Louisiana Beta Carol Calkins was one of three Louisiana State University alumni to be inducted into the E.J. Ourso College of Business Administration Hall of Distinction. Carol, who received her bachelor's degree in accounting, is a regional tax partner for the Price Waterhouse Multistate Tax Consulting Services group based in Dallas.**

**ABOVE: Iowa Zetas Susan Amend Woody, Gail Ganske Ross and Mary Roan had fun this year at a Texas Rangers' baseball game.**

**INDIANA DELTA CAPRICIA PENAVIC MARSHALL** has recently been hired as Hillary Clinton's social secretary. In this position Capricia is responsible for planning every event that occurs in the White House, or on its grounds. Capricia is a lawyer, and was previously Mrs. Clinton's executive assistant.

# Alumnae News



**ABOVE:** Adrienne Hiscox Mitchell and Grand President Beth van Maanen Beatty help Nancy Dunne O'Farrell present a founding member's yearbook to chapter president Linzi Oliver for the archives.



**BELOW:** A group of Kansas Alpha alumnae prepare invitations for the celebration.

Kansas Alphas celebrated their 125th Anniversary, April 4, at the University of Kansas. About 540 alumnae and active members toured the chapter house and campus, performed old and new rush skits and cheered with the KU marching band as they played the fight song and the Rock Chalk Chant. The celebration concluded with a Cookie Shine.

## **WASHINGTON GAMMA JULIE**

**JACOBSON** was recognized as Albuquerque's Favorite Radio Personality along with her co-host Gene Gates at the 8th Annual People's Choice Awards in Albuquerque, New Mexico. Julie and Gene host the morning show on KPEK FM.

The **AKRON, OHIO AND CANTON, OHIO ALUMNAE CLUBS** celebrated Founders' Day, April 25. The celebration took place at the Massillon Women's Club, which is on the National Register of Historic Places. The event included a house tour and a candlelighting ceremony. Golden Arrow members who received their pins during the program were: Ohio Zeta Lois Crumbaker Frazier, Pennsylvania Beta Susan Williams Gessner and Ohio Zeta Marthelyn Sears Kistler. As favors, the Canton Alumnae Club gave angel cookie cutters tied with wine and blue ribbons and the original Cookie Shine cookie recipe.

## **NORTH CAROLINA BETA SUSAN**

**MONROE GORDON** was awarded the Arthur S. Flemming Award. This award is given each year to the federal government's ten most outstanding executives under the age of 40. Susan is the senior staff officer at the CIA, where she watches weapons technology developments in foreign countries. Other recipients of this prestigious award include astronaut Neil Armstrong, Senator Daniel Patrick Moynihan and American Red Cross President Elizabeth Dole.

## **WEST VIRGINIA ALPHA PEGGY**

**WAGENER** publishes a magazine called *Without*. The magazine has recipes and articles for people across the nation who are gluten intolerant. Gluten is found in wheat, rye, barley and oats.

Two-time women's amateur champ in golf, **TEXAS ALPHA KELLI KUEHNE**, is often compared to, and has played with, Tiger Woods. Not only did she turn pro recently and obtain a spot on the U.S. Women's Open, Kelli is Nike's first female golf spokeswoman.

**OREGON BETA PATRICIA PALMER** is the top executive of her own sewing business. Patricia sells Palmer/Pletsch patterns to McCall's. One Palmer/Pletsch blazer in the '80s was McCall's best selling pattern with more than 1 million copies. The Museum of the Fashion Institute of Technology featured Palmer/Pletsch patterns in its exhibit called "Dreams on Paper." Patricia also writes sewing books and holds sewing seminars to teach other seamstresses her skills. She runs her business out of the third floor of her Portland, Oregon home. Both Patricia and her husband work in their two Mama Ro La Bottega Di shops, selling Italian-style ceramics and home furnishings.



## **TEXAS GAMMA MARLA**

**CARDEN-GREEN** is a Dallas Symphony Chorus member. This select group performs with the Dallas Symphony. The group also sings in various locations around the United States and the world, including recent performances in New York and Israel.



The Central Orange County, California Alumnae Panhellenic Association honored **ILLINOIS EPSILON SUSAN KELLY DROBISH** with the 1997 Athena Woman of the Year Award, given at the annual Pageant of Athena Luncheon. Susan won the award based on her tireless dedication to the community and to Pi Beta Phi. Susan has given

her time to her church, Boy Scouts, Girl Scouts, the PTA, her Pi Phi Alumnae Club, the Assistance League of Orange and its affiliate the Orangewood Home for Abused Children. Susan has donated 2,200 hours to the Assistance League of Orange, where she has worked in the thrift shop, served in several officer positions and demonstrated, through a puppet show for children, the importance of wise social decisions. She has served as treasurer, recording secretary, membership directory publisher and president for her Pi Phi alumnae club, and she has served on California Eta's House Corporation for 11 years.

The Dallas Association of Young Lawyers presented **TEXAS ALPHA CHRISTINA MELTON CRAIN** with the Outstanding Young Lawyer of Dallas Award. Christina is a solo practitioner focusing on general corporate law, ad litem representation, estate planning and elder law. She is also an active volunteer serving on various community committees such as Dallas' Junior League, the Baylor Health Care System Foundation Board and the Friends of the Dallas Public Library, Inc. Board. Previous honors Christina has received include being named both to the 40 under 40 Tribute by *The Dallas Business Journal* and as Outstanding Young Republican Woman of the Year. She has also received the U.S. Silver Congressional Medal of Honor for Volunteerism.

**INDIANA ALPHA ANN BRIDGES** is currently the Indiana marketing representative for Six Flags Theme Parks and is living in Greenwood, Indiana.

Last spring, the University of Iowa gave its Distinguished Alumni Award to **IOWA ZETA MADGE JONES PHILLIPS**. Madge won the award based on her dedication to children and the elderly. She was instrumental in creating both the Witwer Senior Center for area senior citizens and the St. Luke's Child Protection Center for sexually abused children. The Cedar Rapids YMCA is also home to the Madge Phillips Resource Center, a 24-hour emergency shelter for women and children. The American Hospital Association named Madge National Volunteer of the Year, and Rotary International named Madge a Paul Harris Fellow. United Way of America gave her the Alexis de Tocqueville volunteer award as well.

**ABOVE LEFT: The Phoenix Panhellenic Association named Arizona Alpha Sarah Nix a continuing education scholarship winner and the club's president, Virginia Alpha Kay Kunz Gianopulos, as a Woman of the Year nominee. Washington Alpha Donna Lory Draper is the Phoenix Panhellenic Association's president-elect.**

**ABOVE CENTER: Eighteen members of the Sun Lakes, Arizona Carnation Circle and the Green Valley, Arizona Carnation Circle met on April 25 in Tucson, Arizona's Botanical Park to observe Founders' Day. The group enjoyed the weather on the patio as they dined. This is the second year the two groups have met.**

**ABOVE: Florida Deltas Kelley and Kim Jonda recently traveled to Tanu Resort in Western Samoa. Kelley is a Peace Corp volunteer in Western Samoa and teaches chemistry to high school-age Samoans.**

Illinois Epsilon's Alumnae Advisory Committee Chairman, **ILLINOIS ALPHA JEAN EGMON**, was awarded the Panhellenic Award for Best Greek Adviser at the Annual Greek Leadership Conference at Northwestern University. Jean won the award based on her dedication, commitment and service to the Pi Phi chapter at the university and to the university itself. Jean is the assistant dean and a professor at Northwestern's School of Education and Social Policy. On April 25, Illinois Epsilon gave the first Jean M. Egmon Award created in Jean's name for outstanding alumnae contributions.

## Jean Wirths Scott Receives CFEA's Varner Award

The College Fraternity Editors Association proudly recognized Pennsylvania Beta Jean Wirths Scott of Pi Beta Phi as the 1998 winner of CFEA's most prestigious honor, the Evin C. Varner Award.

The annual award recognizes an individual for performing extraordinary fraternal service and achieving peer respect through the spirit of assistance and kindness. The award was presented on July 11 at the CFEA Annual Conference in Norfolk, Virginia.

"Being recognized by an outstanding group of editors has special meaning, for journalism in some form has been the key to enjoyment in most all of my life's adventures," says Jean. "From serving as high school and then university newspaper editor, to employment at an advertising agency in New York, to a technical editor in southern California, to writing speeches and managing a local political campaign, the written word and public relations have been at the core of my professional and personal life. Positive communication is the basis for making a difference in people's lives ... and our editors do that on a daily basis."

Jean has been contributing to the Greek community on a national level for more than 20 years as a volunteer. During her 12 years on the Grand Council of Pi Beta Phi, Jean served as an inspirational leader for the Fraternity. She accomplished great things because she maintained open lines of communication and



**Pennsylvania Beta Jean Wirths Scott received the Evin C. Varner Award at CFEA's annual awards banquet.**

encouraged success. As a former member of the NIC Commission on Values and Ethics, National Panhellenic Conference Chairman, and now as Public Relations Committee Chairman and President of the NPC Foundation, Jean dedicates herself to improving the Greek system.

According to Grand President Beth van Maanen Beatty, "Throughout her work, Jean maintains the quiet composure and grace which make her an effective leader. Jean's calm demeanor, positive attitude and propensity for kindness are valuable assets in her professional and personal life."

Jean has used her calm demeanor and positive attitude to help build a strong, unified Greek system. She has visited more than 100 campuses in the United States and Canada conducting workshops and special programs to undergraduates and alumni. Jean has shared her belief in the need to work with higher education to produce a well-rounded student in the areas of social, moral and academic development.

Generosity, approachability and a cheerful attitude have bonded Jean's Greek edifice into an indestructible unit. For her strong character and

service Jean was named Pi Beta Phi's Panhellenic Woman of the Year, has been awarded the NIC Gold Medal, and is a Lambda Chi Alpha Order of Interfraternity Service inductee. In addition, Pepperdine University created the Jean Scott Award of Dedication to be given annually to women who exemplify outstanding commitment to Pepperdine University's Greek System through leadership and service.

"Jean is one of the most dedicated interfraternity leaders I have known. Under her leadership as NPC Chairman, the relationship between NPC and NIC was immeasurably strengthened through the frequent meetings held between the executive boards of the two conferences. This led to two major joint initiatives: one addressing substance-free housing, and the other being the jointly sponsored research initiative," says George Spasyk of Lambda Chi Alpha.

"Having known Evin Varner well during his too-brief life on earth, I have the feeling that he would smile favorably upon the nomination of Jean Scott for the award named in his memory."





After being a Hollywood stunt woman for 11 years, **VIRGINIA DELTA BARBARA ANNE KLEIN** has started her own film production company Angel Partners, Incorporated. Barbara's goal is to produce public service announcements, educational films and family features to raise public awareness about social issues. Through her company,



Barbara has produced PSA's about drug and alcohol abuse, youth smoking, domestic violence, school drop out rate, motorcycle safety, seat belt use and drunk driving.

You might say **NEW YORK DELTA MELISSA GALT** has designing in her blood. Melissa's great-grandfather is Frank Lloyd Wright, and her mother is former actress Anne Baxter. Although Melissa received her undergraduate degree in hotel administration, she had a special interest in interior design. She went back to school and graduated from Southern Institute's design program, and later launched her own interior design firm Lifestyle Interiors, Inc. in Atlanta, Georgia.

The United States Department of Labor recognized **TEXAS ALPHA GAY WARREN GADDIS** for a program she began in 1994 at her Austin, Texas, advertising agency, T3. The program is called T3 and Under, and it gives parents time to bring their children to work instead of taking a long-term maternity leave. Gay and her 14-year-old daughter, Rebecca, attended a ceremony at the White House where President Clinton honored 30 companies from around the nation that have family-friendly policies in the work place. Gay's program was also featured on the "Today Show" and in *Working Mother* magazine.



**ABOVE LEFT: Florida Epsilons at the University of Central Florida hosted an Easter Egg Hunt and party for the children of Orlando-Winter Park, Florida Alumnae Club members.**

**ABOVE CENTER: Tennessee Alpha Cynthia Englerth Dupree had a special reason to celebrate when alumnae gathered to recognize Founders' Day. Over the past 74 years, nine women in Cynthia's family, including herself, have been Tennessee Alpha Pi Phis. Four of these women were together for the Founders' Day celebration. The four women present were Cynthia, Elizabeth Spaulding Houser, Barbara Pruette Englerth and Carol Pruette Varner, Cynthia's cousin, mother and aunt, respectively.**

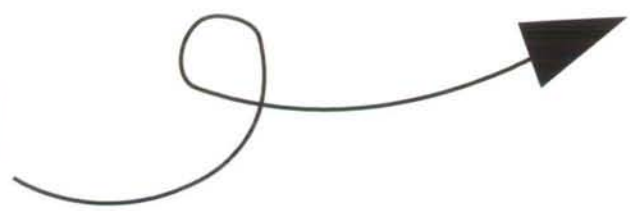
**ABOVE: Philadelphia-Main Line Alumnae Club members held their 22nd annual benefit for the Epilepsy Foundation of Southeastern Pennsylvania. California Epsilon Nancy Kirwin Giles helped organize the event where about 80 attendees enjoyed a superbox buffet and a Phillies game at Veterans Stadium.**



Texas Governor George W. Bush appointed **INDIANA DELTA DEBORAH GODICH HANKINSON** to the Texas Supreme Court. Deborah received her B.A. from Purdue University in 1973 and her M.S. from the University of Texas at Dallas in 1978. She then taught seven years as a special education teacher in Plano, Texas. Seeing how the law affects children with severe learning difficulties, mental retardation and physical handicaps led Deborah to attain her law degree. In 1983 Deborah received her J.D. cum laude from Southern Methodist University School of Law where she graduated first in her class. Deborah practiced civil trial and appellate law before her prestigious appointment.

# Alumnae

Dues



## Are you a Loyal Link?

*Join the thousands of dues-paying alumnae for 1998-99. Your dues payment will ensure the continued success of our Fraternity. Pi Beta Phi receives its financial support mainly from dues, fees and voluntary contributions from alumnae.*

*Pi Beta Phi alumnae in a club area are given the opportunity to pay alumnae dues through their alumnae club. Alumnae who live in an area without an alumnae club were sent a dues notice inviting them to become a Loyal Link member. If you have already paid your alumnae dues for 1998-99, thank you. If you have not yet taken the opportunity to send in your alumnae dues, you may do so by filling out the form below.*

*As a Loyal Link you will receive:*

- ◆ **PI BETA PHI ALUMNAE MEMBERSHIP CARD**
- ◆ **DIRECT LINK, ALUMNAE NEWSLETTER**
- ◆ **"PI BETA PHI ALUMNA" WINDOW DECAL**

26

Name (first, maiden, last): \_\_\_\_\_

Address: \_\_\_\_\_

City: \_\_\_\_\_ State: \_\_\_\_\_ Zip: \_\_\_\_\_

Chapter & date of initiation: \_\_\_\_\_

Enclosed is my check for \$15 payable to Pi Beta Phi Fraternity, for alumnae dues.  
(Dues are not deductible for federal tax purposes.)

Send check, along with the completed form to:  
Pi Beta Phi Central Office,  
7730 Carondelet, Suite 333,  
St. Louis, MO 63105

<b>For Office Use Only</b>	Ref No. _____
Sales Code _____	Check No. _____
Province No. _____	Amount _____

# Fraternity Directory

## Former Grand Presidents

- ELIZABETH TURNER ORR** - Oregon Alpha, 9450 SW Brentwood Place, Tigard, OR 97224  
**JEAN WIRTHS SCOTT** - Pennsylvania Beta, 1186 Cedarwood Drive, Moraga, CA 94556  
**CAROLYN HELMAN LICHTENBERG** - Ohio Alpha, 1064 Westbrooke Way, Atlanta, GA 30319  
**JO ANN MINOR RODERICK** - Oklahoma Beta, 701 Greystone, Stillwater, OK 74074

## Officer Emerita

- GRAND TREASURER EMERITA** - Orpha O'Rourke Coenen, Indiana Delta, PO Box 8, Little Chute, WI 54140

## Grand Council

- GRAND PRESIDENT** - Beth van Maanen Beatty, Texas Gamma, 1506 San Sebastian Lane, Nassau Bay, TX 77058  
**GRAND VICE PRESIDENT OF COLLEGIANS** - Sarah Ruth Mullis, South Carolina Alpha, 10 Kings Tavern Place, Atlanta, GA 30318  
**GRAND VICE PRESIDENT OF ALUMNAE** - Carolyn Pavletich Lesh, Texas Delta, #1 Forest Park, Richardson, TX 75080  
**GRAND VICE PRESIDENT OF FINANCE** - Lou Ann Montgomery Carter, Oklahoma Alpha, PO Box 3925, 8 Barberry Lane, Wilmington, DE 19807  
**GRAND VICE PRESIDENT OF MEMBERSHIP** - Kay Knittle Brock, Colorado Alpha, 5459 West 85th Terrace, Shawnee Mission, KS 66207  
**GRAND VICE PRESIDENT OF PHILANTHROPIES** - Lois Huston Ross, Indiana Delta, 4531 Royal Ridge Way, Dayton, OH 45429  
**GRAND VICE PRESIDENT OF PROGRAM DEVELOPMENT** - Maurine Hager Jones, Montana Alpha, 14 Dogwood Court, Walnut Creek, CA 94598

## Directors

- DIRECTOR OF ACADEMICS** - Frances DeSimone Becque, New York Alpha, 2608 Kent Drive, Carbondale, IL 62901  
**DIRECTOR OF ALUMNAE ADVISORY COMMITTEES** - Linda Noel Ibsen, Colorado Beta, 5241 Lichen Place, Boulder, CO 80301  
**DIRECTOR OF ALUMNAE COMMUNICATIONS** - Emily Russell Tarr, Texas Beta, 1439 Sugar Creek Boulevard, Sugar Land, TX 77478  
**DIRECTOR OF ALUMNAE EXTENSION** - Mary Lu Pendergrast Meixell, Tennessee Delta, 4926 Wheatstone Drive, Fairfax, VA 22032  
**DIRECTOR OF ALUMNAE PROGRAMMING** - Susan Landreth Fry, Texas Delta, PO Box 1266, Edwards, CO 81632

## DIRECTOR OF CHAPTER HOUSE CORPORATIONS

- EAST** - Patricia Emens Anderson, South Carolina Alpha, 1903 Petit Bois Street North, Jackson, MS 39211  
**DIRECTOR OF CHAPTER HOUSE CORPORATIONS WEST** - Ivonna Peterson McCabe, Washington Gamma, 1328 North Jackson, Tacoma, WA 98406  
**DIRECTOR OF CHAPTER SUPPORT, REGION I** - Kristin Noer Olson, Indiana Delta, 2250 Wessman Parkway, Cherry Valley, IL 61016  
**DIRECTOR OF CHAPTER SUPPORT, REGION II** - Melissa Dates Schmidt, Ohio Alpha, 12533 Philmont Drive, Herndon, VA 20170  
**DIRECTOR OF CHAPTER SUPPORT, REGION III** - Jane Landreth Russell, Arizona Alpha, 5711 North 73rd Place, Scottsdale, AZ 85250  
**DIRECTOR OF COLLEGIATE EXTENSION AND RUSH** - Julie Geiger Shannon, Kentucky Beta, 29 Lenape Trail, Chatham, NJ 07928  
**DIRECTOR OF COLLEGIATE PROGRAMMING** - Joanne MaGirl Arnold, Texas Beta, 32640 Spinnaker Drive, Avon Lake, OH 44012  
**DIRECTOR OF FINANCE** - Karen Consalus Price, Missouri Alpha, 1504 Kingstream Circle, Herndon, VA 20170  
**DIRECTOR OF FRATERNITY EDUCATION** - Ruth Neel Noble, California Delta, 2564 Via Carrillo, Palos Verdes Estates, CA 90274  
**DIRECTOR OF MEMBERSHIP** - Ann Johnson Gunn, Louisiana Beta, 2207 Salisbury Lane, Houston, TX 77019

## Appointed Officers

- NATIONAL PANHELLENIC DELEGATE** - Jean Wirths Scott, Pennsylvania Beta, 1186 Cedarwood Drive, Moraga, CA 94556  
**ANNIVERSARY CELEBRATIONS COORDINATOR** - Joy Vanasse Goodenough, Washington Beta, 3932 West Barrett Street, Seattle, WA 98199  
**CHAPTER SERVICES COORDINATOR** - Jessica Lynn Manning, Washington Beta, 7730 Carondelet, Suite 333, St. Louis, MO 63105  
**CONVENTION COORDINATOR** - Barbara Ehni Van Luven, Indiana Epsilon, 2 Portland Court, St. Louis, MO 63108  
**CONVENTION SITE COORDINATOR** - Martha Sherman Malsbary, Indiana Delta, 1001+ Craig Drive, Overland Park, KS 66212  
**DIRECTIONS PROGRAM CHAIRMAN** - Ann Johnson Gunn, Louisiana Beta, 2207 Salisbury Lane, Houston, TX 77019  
**ELECTIONS COORDINATOR** - Jo Ann Minor Roderick, Oklahoma Beta, 701 Greystone, Stillwater, OK 74074

## FRATERNITY HISTORIAN

- Marilyn Simpson Ford, Nebraska Beta, 268 Underwood Drive NW, Atlanta, GA 30328  
**MUSIC CHAIRMAN** - Suzanne Chapman Lawson, Oklahoma Beta, 44 Rockinghorse Road, Rancho Palos Verdes, CA 90275  
**ASSISTANT MUSIC CHAIRMAN** - Jan Kinnune Hillesland, Washington Alpha, PO Box 627, Grapeview, WA 98546  
**PARLIAMENTARIAN** - Janice Shrader Falk, Nebraska Beta, 3944 County Road P 43, Fort Calhoun, NE 68023  
**RISK MANAGEMENT OFFICER** - Michelle Murrell Goseco, California Eta, 8 Sepulveda, Rancho Santa Margarita, CA 92688  
**SUPERVISOR OF CHAPTER HISTORIES** - Penelope Heyl Moss, Kansas Beta, 14024 Pinnacle Drive, Wichita, KS 67230

## Special Officers

- TRAVELING GRADUATE CONSULTANTS** - Becky Glaze, Oklahoma Beta; Rebecca Grinager, Iowa Beta; Taylor Kepler, Texas Beta; Emma-Anne Millard, Pennsylvania Eta; Jennifer Shaffer, Texas Beta; Michelle Vieira, California Kappa  
**RESIDENT GRADUATE CONSULTANTS** - Julie Petty, Illinois Eta; Katie Schwie, Tennessee Delta

## Pi Beta Phi Central Office

7730 Carondelet, Suite 333, St. Louis, MO 63105 (314) 727-7338

FAX: (314) 727-8049

E-mail: [pibetaphi@compuserve.com](mailto:pibetaphi@compuserve.com)

Web site: [www.pibetaphi.org](http://www.pibetaphi.org)

**EXECUTIVE DIRECTOR** - Renée Ross Mercer, Iowa Zeta

**CONTROLLER** - Tisha Hamasaki

**ARROW EDITOR/COMMUNICATIONS**

**COORDINATOR** - Elizabeth Gilkinson Cannon, Missouri Alpha

**PI PHI EXPRESS** - (800) 322-1867

Web site: [www.pibetaphi.org/purch.htm](http://www.pibetaphi.org/purch.htm)

## Fraternity Insurance Representatives

**PROPERTY AND LIABILITY INSURANCE** - Consecro Risk Management, Inc., PO Box 1910, Carmel, IN 46032

**MEDICAL INSURANCE** - Coverdell & Company, 2622 Piedmont Road NE, Atlanta, GA 30324 (800) 787-8711

# Fraternity Directory

Please remove this center portion for future reference.  
The complete Fraternity Directory appears in the Fall issue of The ARROW only. This listing is published for the private use of our members. Unauthorized use of this mailing list is prohibited.

## Board of Trustee Funds

**CHAIRMAN** - Lou Ann Montgomery Carter,  
Oklahoma Alpha, PO Box 3925, 8 Barberry  
Lane, Wilmington, DE 19807

## Arrowmont

**Arrowmont School of Arts and Crafts -  
Box 567, Gatlinburg, TN 37738  
(423) 436-5860**

**DIRECTOR** - Sandra Blain, Arizona Beta

## Holt House

**402 East 1st Avenue, Monmouth,  
IL 61462  
(309) 734-3988**

**HOSTESS** - Jane Mears Warfield, Illinois Alpha  
**HOURS** - By appointment only.

## Pi Beta Phi Foundation

**Office - 7730 Carondelet, Suite 333,  
St. Louis, MO 63105 (314) 727-7338  
FAX: (314) 727-1255  
E-mail: pibetaphifndn@compuserve.com  
Web site: pibetaphi.org/foundation.htm**

### BOARD OF TRUSTEES

**PRESIDENT** - Betty Blades Lofton, Indiana  
Gamma, 9060 Pickwick Drive, Indianapolis,  
IN 46260

**VICE PRESIDENT** - Elizabeth Davenport Garrels,  
Iowa Alpha, 2257 235th Street, Mount  
Pleasant, IA 52641

**SECRETARY** - Carol Inge Warren, North  
Carolina Beta, 5439 Cascade Drive, Lisle,  
IL 60532

**TREASURER** - Ann Warmack Brookshire, Texas  
Beta, 820 Mallory Court, Tyler, TX 75703  
Beth van Maanen Beatty, Texas Gamma, 1506  
San Sebastian Lane, Nassau Bay, TX 77058  
Lois Huston Ross, Indiana Delta, 4531 Royal  
Ridge Way, Dayton, OH 45429

**DIRECTOR** - Lynn M. Raney, Pi Beta Phi  
Foundation, 7730 Carondelet, Suite 333,  
St. Louis, MO 63105

## Foundation Committees

### ALUMNAE SCHOLARSHIP COMMITTEE

**CHAIRMAN** - Elizabeth Gray Caldwell, 2636  
Cambria Mill Road NE, Granville, OH  
43023

Marion Swanson Oster, 38 Flood Circle,  
Atherton, CA 94027

Carrie-Mae MacNair Blount, 7712 Pickard NE,  
Albuquerque, NM 87110

### EMMA HARPER TURNER FUND COMMITTEE

**CHAIRMAN** - Anne Busch Hills, 440  
Meadowview Drive, La Canada, CA 91011  
Marga Larson Bales, 108 Island Bay Court,  
Penhook, VA 24137  
Barbara Varner Frizell, 2609 Heather Parkway,  
Hutchinson, KS 67502

### GRADUATE FELLOWSHIP COMMITTEE

**CHAIRMAN** - Susan Crane Kyle, 1303  
Jambalana Lane, Fort Myers, FL 33901  
Elizabeth Jordan Holman, 9225 North 53  
Place, Paradise Valley, AZ 85253  
Kristy Lynn Weber, 4819 Saxon, Bellaire, TX  
77401

### UNDERGRADUATE SCHOLARSHIP COMMITTEE

**CHAIRMAN** - Claire Curry Carlson, 2400  
Shoreline, Abilene, TX 79602  
Sally Roney Hogle, 3729 Normandy, Dallas,  
TX 75205  
Marci Murray Derrick, 4123 Christacy Way,  
Marietta, GA 30066

## Fraternity Committees

### CANADIAN PHILANTHROPIES COMMITTEE

**CHAIRMAN** - Helen Steeves Jull, 1318  
Quebec Avenue SW, Calgary AB T2T 1G2  
CANADA

### CAROLYN HELMAN LICHTENBERG CREST

**AWARD COMMITTEE**  
**CHAIRMAN** - Carolyn Pavletich Lesh, #1  
Forest Park, Richardson, TX 75080  
Martha Bowman Ebeling, 456 Lookout Ridge,  
Dayton, OH 45419  
Catherine Nelson Evans, 2217 Patterson  
Place, Arlington, TX 76012

### CONVENTION COMMITTEE

**CHAIRMAN** - Donna Coffman Dawson,  
11635 Greenbay Drive, Houston, TX 77024  
Pam Plumley Barineau, 155 Radney Road,  
Houston, TX 77024  
Lynn Harrison Baird, 5809 Annapolis Street,  
Houston, TX 77005

### HOLT HOUSE COMMITTEE

**CHAIRMAN** - Alice Gill Goshorn, 4921 East  
State Road 252, Franklin, IN 46131  
**SECRETARY** - Kathleen June Hanson, 907 Main,  
Sioux City, IA 51103  
**FINANCIAL SECRETARY** - Patricia Baird Link,  
11915 Bardmont, St. Louis, MO 63126  
**PUBLICITY** - Leisa Ebeling Lowrey, 375 East  
Timberlin Lane, Huntingburg, IN 47542

### MONMOUTH REPRESENTATIVE - Jeanne Gittings

Robeson, RR 3, Monmouth, IL 61462  
**VIDEOS** - Pi Beta Phi Central Office, 7730  
Carondelet, Suite 333, St. Louis,  
MO 63105

### LEGISLATIVE COMMITTEE

**CHAIRMAN** - Dee Rippetoe Richardson, 2801  
Camelot Drive, Oklahoma City, OK 73120  
Virginia Bland Fry, 13820 Clayton Road,  
Town & Country, MO 63017  
Lynn Partleton Hudy, 4454 North Maryland  
Avenue, Milwaukee, WI 53211

### LINKS TO LITERACY COMMITTEE

**CHAIRMAN** - Jean Egmon, 1625 Sheridan  
Road, #212, Wilmette, IL 60091  
Joan Scholes Hill, 3772 Wonderland Hill  
Avenue, Boulder, CO 80304  
Camilla Philson Humphrey, 16 Conifer  
Square, Augusta, GA 30909  
Barbara Roe Luhrs, 14067 Mastin, Overland  
Park, KS 66221

### NOMINATING COMMITTEE

**CHAIRMAN** - Robin McPherson Rohrback,  
2300 Riviera Drive, Vienna, VA 22181  
Lisa Masters, PO Box 214, Fayetteville,  
GA 30214  
Alison Hennig Moore, 2525 Sycamore,  
Colorado Springs, CO 80906

### SETTLEMENT SCHOOL BOARD OF GOVERNORS

**CHAIRMAN** - Dawn Sheeler Ford, 1936  
Stonebrook Drive, Knoxville, TN 37923  
**VICE CHAIRMAN** - Barbara Blanks Bullard,  
1118 Blue Springs Road, Franklin,  
TN 37069  
**SECRETARY** - Sammye Johnston Chaffin, 4723  
Crestwood Drive, Little Rock, AR 72207  
**TREASURER** - Jill Lanman Schneider, 21  
Augusta Court, Greenville, SC 29605

### MEMBERS OF THE BOARD

Martha Wohler Bickel, 30 Huntleigh Woods,  
St. Louis, MO 63131  
Sandra Blain, Arrowmont, 567 Parkway,  
Gatlinburg, TN 37738  
Ann Ward Burton, 1989 Siringo Road, Santa  
Fe, NM 87505  
Barbara Lyons Crawford, 203 Jackson Avenue,  
Lexington, VA 24450  
Catherine Nelson Evans, 2217 Patterson  
Place, Arlington, TX 76012  
Carolyn Brown Ferebee, 419 Forest Grove  
Drive, Richardson, TX 75080  
Mary Ann Behlen Hruska, 133 Springside  
Road, Walnut Creek, CA 94596

# Fraternity Directory

Kilmeny Dunne Jackson, 4047 West 124th Terrace, Leawood, KS 66209  
Margaret Ann Struble Norris, 1302 Wickford Place, Huron, OH 44839  
Phyllis Fazzari Speer, 5978 Karensue Lane, San Diego, CA 92122  
Beth van Maanen Beatty, 1506 San Sebastian Lane, Houston, TX 77058  
Sarah Ruth Mullis, 10 Kings Tavern Place, Atlanta, GA 30318  
Carolyn Pavletich Lesh, #1 Forest Park, Richardson, TX 75080  
Lou Ann Montgomery Carter, Box 3925, 8 Barberry Lane, Wilmington, DE 19807  
Kay Knittle Brock, 5459 West 85th Terrace, Shawnee Mission, KS 66207

Lois Huston Ross, 4531 Royal Ridge Way, Dayton, OH 45429  
Maurine Hager Jones, 14 Dogwood Court, Walnut Creek, CA 94598

**VIDEOS** - Pi Beta Phi Central Office, 7730 Carondelet, Suite 333, St. Louis, MO 63105

#### STUDENT LOANS COMMITTEE

**CHAIRMAN** - Nancy Fogle Pollard, 120 Hume Lane, Bakersfield, CA 93309  
Marisa Dallmen, 346 Sun Mountain Drive, Loveland, CO 80538  
Melissa Lofton Guinn, 415 Mulcahy Circle, Niceville, FL 32578

## National Panhellenic Conference 1997-99 Biennium

**PI BETA PHI DELEGATE** - Jean Wirths Scott, 1186 Cedarwood Drive, Moraga, CA 94556

**PI BETA PHI FIRST ALTERNATE** - Carol Inge Warren, 5439 Cascade Drive, Lisle, IL 60532

**PI BETA PHI SECOND ALTERNATE** - Ellie Moore Merrick, 3200 Poinsettia Avenue, Manhattan Beach, CA 90266

**PI BETA PHI THIRD ALTERNATE** - Jo Ann Minor Roderick, 701 Greystone, Stillwater, OK 74074

## Roll of Chapters

*Chapters are listed in provincial order with chapter name, date of founding, university and chapter address.*

### Alpha Province

**COLLEGIATE PROVINCE PRESIDENT** - Margaret E. Mulkern, Massachusetts Beta, 11A Ambassador Drive, Manchester, CT 06040  
**CONNECTICUT ALPHA** - (1943) University of Connecticut, 10 Whitney Road, Storrs, CT 06268  
**CONNECTICUT BETA** - (1989) Yale University, PO Box 202319, New Haven, CT 06520  
**MAINE ALPHA** - (1920) University of Maine, 375 College Avenue, Orono, ME 04473  
**NEW YORK EPSILON** - (1984) Rensselaer Polytechnic Institute, 8 Sherry Road, Troy, NY 12180  
**VERMONT BETA** - (1898) University of Vermont, 369 South Prospect Street, Burlington, VT 05401

### Beta Province

**COLLEGIATE PROVINCE PRESIDENT** - MaryMargaret McDonough, Maryland Beta, 217 Prospect Avenue #12A-2C, Cranford, NJ 07016  
**NEW YORK ALPHA** - (1896) Syracuse University, 210 Walnut Place, Syracuse, NY 13210  
**NEW YORK DELTA** - (1919) Cornell University, 330 Triphammer Road, Ithaca, NY 14850  
**ONTARIO ALPHA** - (1908) University of Toronto, 220 Beverley Street, Toronto, ON M5T 1Z3 Canada

**ONTARIO BETA** - (1934) University of Western Ontario, 293 Central Avenue, London, ON N6B 2L9 Canada

**ONTARIO GAMMA** - (1996) University of Guelph, Box 3008 Park Mall Postal Outlet, 2 Quebec Street, Guelph, ON N1H 8J5 Canada

### Gamma Province

**COLLEGIATE PROVINCE PRESIDENT** - Lori Poveromo Haight, Virginia Eta, 4507 Lyons Run Circle #204, Owings Mills, MD 21117  
**NEW JERSEY ALPHA** - (1990) Princeton University, 20 Nassau Street, Room 408, Princeton, NJ 08540  
**PENNSYLVANIA ETA** - (1980) Lafayette College, Farinon Center, Box 9485, Easton, PA 18042  
**PENNSYLVANIA THETA** - (1990) Villanova University, Connelly Center 2nd Floor, 204 Dougherty Hall, Villanova, PA 19085  
**PENNSYLVANIA IOTA** - (1993) University of Pennsylvania, 4027 Walnut Street, Philadelphia, PA 19104  
**PENNSYLVANIA KAPPA** - (1997) Lehigh University, 39 University Drive, Box E377 Bethlehem, PA 18015

### Delta Province

**COLLEGIATE PROVINCE PRESIDENT** - Karen Neely Faryniak, Pennsylvania Gamma, 223 West Pomfret Street, Carlisle, PA 17013  
**PENNSYLVANIA BETA** - (1895) Bucknell University, Box C-3948, Bucknell University, Lewisburg, PA 17837  
**PENNSYLVANIA GAMMA** - (1903) Dickinson College, LDC-HUB, PO Box 4888, Carlisle, PA 17013  
**PENNSYLVANIA EPSILON** - (1953) Pennsylvania State University, 5 Hiester Hall, University Park, PA 16802  
**PENNSYLVANIA ZETA** - (1979) Washington & Jefferson College, 50 South Lincoln Street, Campus Box 181, Washington, PA 15301

### Epsilon Province

**COLLEGIATE PROVINCE PRESIDENT** - Dorothy Helfenstein, Virginia Zeta, 117 Cameron Mews, Alexandria, VA 22314  
**VIRGINIA EPSILON** - (1975) University of Virginia, 1509 Grady Avenue, Charlottesville, VA 22903  
**VIRGINIA ZETA** - (1981) Virginia Polytechnic Institute & State University, 301 SPH-E, Blacksburg, VA 24060  
**VIRGINIA THETA** - (1992) Washington & Lee University, PO Box 1559, Lexington, VA 24450  
**WEST VIRGINIA ALPHA** - (1918) West Virginia University, 1493 University Avenue, Morgantown, WV 26505

# Directory

## Zeta Province

- COLLEGIATE PROVINCE PRESIDENT** - Karen Shelton Chevalier, California Delta, 8509 Browning Court, Annandale, VA 22003
- VIRGINIA GAMMA** - (1925) College of William & Mary, CSU 4232, PO Box 8793, Williamsburg, VA 23186
- VIRGINIA DELTA** - (1965) Old Dominion University, Old Dominion University, Office of Student Activities, Webb 200, Norfolk, VA 23508
- VIRGINIA ETA** - (1987) University of Richmond, RC 55, 28 Westhampton Way, Univ. of Richmond, VA 23173

## Eta Province

- COLLEGIATE PROVINCE PRESIDENT** - Jennifer Plagman-Galvin, Iowa Gamma, 9511-2B Willow Ridge Road, Charlotte, NC 28210
- NORTH CAROLINA ALPHA** - (1923) University of North Carolina, 109 Hillsborough Street, Chapel Hill, NC 27514
- NORTH CAROLINA BETA** - (1933) Duke University, PO Box 99315, Durham, NC 27708
- NORTH CAROLINA GAMMA** - (1994) Wake Forest University, PO Box 8745, Wake Forest University, Winston-Salem, NC 27109

## Theta Province

- COLLEGIATE PROVINCE PRESIDENT** - Tracy Johnson Zaldo, Georgia Alpha, 4519 Silver Peak Parkway, Suwanee, GA 30024
- ALABAMA ALPHA** - (1927) Birmingham-Southern College, Box 549059, Birmingham, AL 35254
- ALABAMA BETA** - (1949) University of Alabama, PO Box 11067, Tuscaloosa, AL 35486
- ALABAMA GAMMA** - (1957) Auburn University, Boyd Hall (Dorm J), Auburn, AL 36830
- GEORGIA ALPHA** - (1939) University of Georgia, 886 South Milledge Avenue, Athens, GA 30605

## Iota Province

- COLLEGIATE PROVINCE PRESIDENT** - Renee McDonald Hill, Arkansas Alpha, 1660 Parkside Circle, Niceville, FL 32578
- FLORIDA ALPHA** - (1913) Stetson University, Box 8237 Stetson University, DeLand, FL 32720
- FLORIDA BETA** - (1921) Florida State University, 519 West Jefferson Street, Tallahassee, FL 32301

**FLORIDA DELTA** - (1969) University of Florida, 37 West Fraternity Row, Gainesville, FL 32603

**FLORIDA EPSILON** - (1981) University of Central Florida, 4304 Greek Park Drive, Orlando, FL 32816

## Kappa Province

- COLLEGIATE PROVINCE PRESIDENT** - Karen Anne Gunther, Ohio Epsilon, 4318 Grantley Road, Toledo, OH 43613
- MICHIGAN ALPHA** - (1887) Hillsdale College, 304 Hillsdale Street, Hillsdale, MI 49242
- MICHIGAN BETA** - (1888) University of Michigan, 836 Tappan, Ann Arbor, MI 48104
- MICHIGAN GAMMA** - (1945) Michigan State University, 343 North Harrison Road, East Lansing, MI 48823
- MICHIGAN EPSILON** - (1996) Western Michigan University, 219 Woodward Avenue, Kalamazoo, MI 49007

## Lambda I Province

- COLLEGIATE PROVINCE PRESIDENT** - Nealie Pidcock-Houk, Ohio Alpha, 1912 Grafton Road, Elyria, OH 44035
- OHIO ALPHA** - (1889) Ohio University, 6 South College Street, Athens, OH 45701
- OHIO BETA** - (1894) Ohio State University, 1845 Indianola Avenue, Columbus, OH 43201
- OHIO ETA** - (1954) Denison University, 425 West College Street, Granville, OH 43023

## Lambda II Province

- COLLEGIATE PROVINCE PRESIDENT** - Rae Wohlhueter Maier, Kentucky Beta, 1840 Beacon Hill, Fort Wright, KY 41011
- OHIO EPSILON** - (1945) University of Toledo, 2999 West Bancroft C1, Toledo, OH 43606
- OHIO ZETA** - (1945) Miami University, Suite 126, Minnich Hall, Oxford, OH 45056
- OHIO THETA** - (1986) Bowling Green State University, Pi Beta Phi House, Bowling Green, OH 43403
- OHIO IOTA** - (1989) University of Dayton, 421 College Park, Dayton, OH 45409

## Mu Province

- COLLEGIATE PROVINCE PRESIDENT** - Barbara McReynolds LaMaster, Kentucky Beta, 3602 Locust Circle West, Prospect, KY 40059
- KENTUCKY ALPHA** - (1925) University of Louisville, 2030 Confederate Place, Louisville, KY 40208

**KENTUCKY BETA** - (1962) University of Kentucky, 409 Columbia Avenue, Lexington, KY 40508

**KENTUCKY GAMMA** - (1976) Eastern Kentucky University, 128 Powell, Richmond, KY 40475

**TENNESSEE BETA** - (1940) Vanderbilt University, 101 24th Avenue South, Nashville, TN 37212

**TENNESSEE GAMMA** - (1948) University of Tennessee, 1531 Cumberland Avenue, Suite 301, Knoxville, TN 37916

## Nu Province

- COLLEGIATE PROVINCE PRESIDENT** - Eileen O'Neil Grigutis, Kentucky Beta, N77-W7089 Oak Street, Cedarburg, WI 53012
- ILLINOIS EPSILON** - (1894) Northwestern University, 636 Emerson Street, Evanston, IL 60201
- ILLINOIS ZETA** - (1895) University of Illinois, 1005 South Wright Street, Champaign, IL 61820
- INDIANA DELTA** - (1921) Purdue University, 1012 State Street, West Lafayette, IN 47906
- INDIANA ETA** - (1974) Indiana-Purdue University-Fort Wayne, 2101 East Coliseum Boulevard, Fort Wayne, IN 46805
- INDIANA THETA** - (1998) Valparaiso University, 324 Scheele Hall, Valparaiso, IN 46383

## Xi Province

- COLLEGIATE PROVINCE PRESIDENT** - Judith Pigg Mullinix, Kentucky Beta, 4876 Brentridge Court, Greenwood, IN 46143
- INDIANA ALPHA** - (1888) Franklin College, 501 East Monroe Street, Elyse Hall Box C, Franklin, IN 46131
- INDIANA BETA** - (1893) Indiana University, 928 East 3rd Street, Bloomington, IN 47406
- INDIANA GAMMA** - (1897) Butler University, 831 West Hampton Drive, Indianapolis, IN 46208
- INDIANA EPSILON** - (1942) DePauw University, 303 South Locust, Greencastle, IN 46135
- INDIANA ZETA** - (1952) Ball State University, Rogers Hall, Suite 316, Muncie, IN 47306

## Omicron Province

- COLLEGIATE PROVINCE PRESIDENT** - Laura Judd Fulton, Illinois Theta, 31 Walnut Circle, Aurora, IL 60506
- ILLINOIS ALPHA** - (1867) Monmouth College, 318 North 9th Street, Monmouth, IL 61462
- ILLINOIS BETA-DELTA** - (1930) Knox College, Box 1737, Knox College, Galesburg, IL 61401

# Fraternity Directory

**ILLINOIS ETA** - (1912) Millikin University, 235 North Fairview, Decatur, IL 62522

**ILLINOIS THETA** - (1947) Bradley University, 1004 North Institute Place, Peoria, IL 61606

**ILLINOIS IOTA** - (1974) Illinois State University, 709 West College Avenue, Normal, IL 61761

## Pi Province

**COLLEGIATE PROVINCE PRESIDENT** - Heather Keefe Hicks, Alabama Beta, 1279 Village Green Drive, Hixson, TN 37343

**LOUISIANA ALPHA** - (1891) Tulane University-Newcomb College, 7014 Zimple Street, New Orleans, LA 70118

**LOUISIANA BETA** - (1936) Louisiana State University, Pi Beta Phi House, PO Box 25110, Baton Rouge, LA 70894

**MISSISSIPPI ALPHA** - (1961) University of Southern Mississippi, Southern Station Box 8376, Hattiesburg, MS 39406

**MISSISSIPPI BETA** - (1962) University of Mississippi, PO Box 8347, University, MS 38677

**TENNESSEE DELTA** - (1962) University of Memphis, U of M PO Box 528035, Panhellenic Building, Memphis, TN 38152

## Rho Province

**COLLEGIATE PROVINCE PRESIDENT** - Sara Wareham Waggoner, Wisconsin Alpha, 408 Pine Ridge Drive, Shell Lake, WI 54871

**MINNESOTA ALPHA** - (1890) University of Minnesota, 1109 5th Street SE, Minneapolis, MN 55414

**NORTH DAKOTA ALPHA** - (1921) University of North Dakota, 409 Cambridge Street, Grand Forks, ND 58203

**WISCONSIN ALPHA** - (1894) University of Wisconsin, 130 Langdon Street, Madison, WI 53703

**WISCONSIN DELTA** - (1990) Marquette University, Box 139 ORC, AMU 140 PO Box 1881, Milwaukee, WI 53201

## Sigma Province

**COLLEGIATE PROVINCE PRESIDENT** - Kimberly Ann Barger, Oregon Alpha, 2100 Heatherwood Drive #B2, Lawrence, KS 66047

**KANSAS ALPHA** - (1873) University of Kansas, 1612 West 15th Street, Lawrence, KS 66044

**KANSAS BETA** - (1915) Kansas State University, 1819 Todd Road, Manhattan, KS 66502

**NEBRASKA BETA** - (1895) University of Nebraska, 426 North 16th, Lincoln, NE 68508

**NEBRASKA GAMMA** - (1994) Creighton University, Student Activities Office-SC 110, 2500 California Plaza, Omaha, NE 68178

**SOUTH DAKOTA ALPHA** - (1927) University of South Dakota, 118 North Plum, Vermillion, SD 57069

## Tau Province

**COLLEGIATE PROVINCE PRESIDENT** - Janine Hjort Reames, Iowa Beta, 7702 Dellwood, Urbandale, IA 50322

**IOWA ALPHA** - (1868) Iowa Wesleyan University, 605 North Broadway, S-T Hall, Mount Pleasant, IA 52641

**IOWA BETA** - (1874) Simpson College, 406 North Buxton, Indianola, IA 50125

**IOWA GAMMA** - (1877) Iowa State University, 208 Ash Avenue, Ames, IA 50014

**IOWA ZETA** - (1882) University of Iowa, 815 East Washington, Iowa City, IA 52240

**IOWA ETA** - (1983) Drake University, 1219 34th Street, Des Moines, IA 50311

## Upsilon Province

**COLLEGIATE PROVINCE PRESIDENT** - Barbara Bittner Hakkio, Tennessee Alpha, 6523 Jefferson, Kansas City, MO 64113

**ARKANSAS ALPHA** - (1909) University of Arkansas, 502 West Maple, Fayetteville, AR 72701

**ARKANSAS BETA** - (1963) University of Arkansas-Little Rock, 3117 South Taylor, Little Rock, AR 72204

**MISSOURI ALPHA** - (1899) University of Missouri, 511 East Rollins, Columbia, MO 65201

**MISSOURI BETA** - (1907) Washington University, Box 1128, Washington University, St. Louis, MO 63105

**MISSOURI GAMMA** - (1914) Drury College, 900 North Benton Avenue, Springfield, MO 65802

## Phi Province

**COLLEGIATE PROVINCE PRESIDENT** - Shannon Strain Schultheis, Oklahoma Beta, 5201 NW 108 Terrace, Oklahoma City, OK 73162

**OKLAHOMA ALPHA** - (1910) University of Oklahoma, 1701 Elm Avenue, Norman, OK 73072

**OKLAHOMA BETA** - (1919) Oklahoma State University, 324 South Cleveland Avenue, Stillwater, OK 74074

**TEXAS GAMMA** - (1953) Texas Tech University, #17 Greek Circle, Lubbock, TX 79424

**TEXAS EPSILON** - (1976) University of North Texas, PO Box 310668, Denton, TX 76203

## Chi Province

**COLLEGIATE PROVINCE PRESIDENT** - Lyn Arnot Clark, Texas Alpha, 3 Chaparral, Breckenridge, TX 76424

**TEXAS ALPHA** - (1902) University of Texas, 2300 San Antonio, Austin, TX 78705

**TEXAS BETA** - (1916) Southern Methodist University, 3101 Daniel, Dallas, TX 75205

**TEXAS DELTA** - (1956) Texas Christian University, PO Box 290943, Fort Worth, TX 76129

**TEXAS ZETA** - (1977) Baylor University, PO Box 85618, Waco, TX 76798

**TEXAS ETA** - (1985) Texas A & M University, 1601 Munson Avenue, College Station, TX 77840

## Psi Province

**COLLEGIATE PROVINCE PRESIDENT** - Cheryl Ruvolo Orr, Colorado Gamma, 10667 Goosehaven Drive, Lafayette, CO 80026

**COLORADO ALPHA** - (1884) University of Colorado, 890 11th Street, Boulder, CO 80302

**COLORADO GAMMA** - (1954) Colorado State University, 625 West Lake Street, Fort Collins, CO 80521

**COLORADO DELTA** - (1986) Colorado School of Mines, 910 13th Street, Golden, CO 80401

**WYOMING ALPHA** - (1910) University of Wyoming, 1502 East Sorority Row, Laramie, WY 82070

## Omega Province

**COLLEGIATE PROVINCE PRESIDENT** - Jimmie Lou (Bimi) Lane Huebner, New Mexico Beta, 7605 East Sabino Vista Drive, Tucson, AZ 85750

**ARIZONA ALPHA** - (1917) University of Arizona, 1035 North Mountain Avenue, Tucson, AZ 85719

**ARIZONA BETA** - (1965) Arizona State University, 340 East University #171, Tempe, AZ 85281

**ARIZONA GAMMA** - (1990) Northern Arizona University, PO Box 23590, Flagstaff, AZ 86011

**NEW MEXICO ALPHA** - (1946) University of New Mexico, 1701 Mesa Vista NE, Albuquerque, NM 87106

**NEW MEXICO BETA** - (1972) New Mexico State University, 300 Greek Complex, Las Cruces, NM 88003

# Fraternity Directory

## Alpha-Beta Province

- COLLEGIATE PROVINCE PRESIDENT** - Michael Marie Bettin, Utah Alpha, 630 South Elizabeth Street, Salt Lake City, UT 84102
- ALBERTA ALPHA** - (1931) University of Alberta, 11019-88 Avenue, Edmonton, AB T6G 0Z3 Canada
- MONTANA ALPHA** - (1921) Montana State University, 1304 South 5th, Bozeman, MT 59715
- UTAH ALPHA** - (1929) University of Utah, 1443 East 100 South, Salt Lake City, UT 84102

## Alpha-Gamma Province

- COLLEGIATE PROVINCE PRESIDENT** - Vicki Sinkunas Mendenhall, Washington Alpha, 15920 41st Street NE, Seattle, WA 98155
- IDAHO ALPHA** - (1923) University of Idaho, 507 Idaho Avenue, Moscow, ID 83843
- WASHINGTON ALPHA** - (1907) University of Washington, 4548 17th NE, Seattle, WA 98105
- WASHINGTON BETA** - (1912) Washington State University, NE 825 Linden, Pullman, WA 99163
- WASHINGTON GAMMA** - (1948) University of Puget Sound, 1500 North Warner, Tacoma, WA 98416

## Alpha-Delta Province

- COLLEGIATE PROVINCE PRESIDENT** - Julie Ann Jacobson, Washington Gamma, Apartment 5103, 6000 Cortaderia Street NE, Albuquerque, NM 87111
- NEVADA ALPHA** - (1915) University of Nevada, 869 North Sierra Street, Reno, NV 89503
- OREGON ALPHA** - (1915) University of Oregon, 1518 Kincaid Street, Eugene, OR 97401
- OREGON BETA** - (1917) Oregon State University, 2685 NW Taylor, Corvallis, OR 97330
- OREGON GAMMA** - (1944) Willamette University, 900 State Street, H-230, Salem, OR 97301

## Alpha-Epsilon Province

- COLLEGIATE PROVINCE PRESIDENT** - Darlene Daum Papano, Ohio Beta, 760 West California Way, Woodside, CA 94062
- CALIFORNIA ALPHA** - (1893) Stanford University, PO Box 4342, Stanford, CA 94309
- CALIFORNIA BETA** - (1900) University of California, Berkeley, 2325 Piedmont, Berkeley, CA 94704
- CALIFORNIA THETA** - (1980) University of California, Davis, 445 Russell Boulevard, Davis, CA 95616
- CALIFORNIA IOTA** - (1986) California State University, Chico, 413 West Fourth Street, Chico, CA 95928

## Alpha-Zeta Province

- COLLEGIATE PROVINCE PRESIDENT** - Jennifer Gapasin Yguico, Missouri Beta, 3823 Royal Woods Drive, Sherman Oaks, CA 91403
- CALIFORNIA GAMMA** - (1917) University of Southern California, 667 West 28th Street, Los Angeles, CA 90007
- CALIFORNIA DELTA** - (1927) University of California, Los Angeles, 700 Hilgard, Los Angeles, CA 90024
- CALIFORNIA ZETA** - (1950) University of California, Santa Barbara, 763 Camino Pescadero, Goleta, CA 93117
- CALIFORNIA MU** - (1996) Pepperdine University, 24255 Pacific Coast Highway, Malibu, CA 90263

## Alpha-Eta Province

- COLLEGIATE PROVINCE PRESIDENT** - Diane Marie Bielman, California Eta, 623 Terrace Circle, Huntington Beach, CA 92648
- CALIFORNIA EPSILON** - (1949) San Diego State University, 5080 College Place, San Diego, CA 92115
- CALIFORNIA ETA** - (1974) University of California, Irvine, Box 46-Arroyo, Irvine, CA 92612
- CALIFORNIA KAPPA** - (1987) University of California, San Diego, 7770 Regents Road #113-238, San Diego, CA 92122
- CALIFORNIA LAMBDA** - (1988) University of California, Riverside, 1020 Linden Street #12, Riverside, CA 92507

## Roll of Alumnae Clubs

### Alpha Province

- ALUMNAE PROVINCE PRESIDENT** - Hannah Fallon Burke, Connecticut Alpha, 12 Whispering Rod Road, Farmington, CT 06032
- BERKSHIRE COUNTY, MASSACHUSETTS** - Pamela Hawkins-Pelkey, 831 Tamarack Road, Pittsfield, MA 01201
- BOSTON CITY, MASSACHUSETTS** - Katherine Antony Fitzgerald, 60 Waverly Road, Woburn, MA 01801
- BOSTONIAN, MASSACHUSETTS** - Cherylann Chase Taylor, PO Box 8, Upton, MA 01568
- CAPE COD, MASSACHUSETTS CARNATION CIRCLE** - Elizabeth Hewins Gallagher, Morningside Tonset Rd, Orleans, MA 02653
- EASTERN MAINE** - Sandra White Dubay, RFD 2 Box 2465, Old Town, ME 04468

- GREATER SPRINGFIELD, MASSACHUSETTS** - Patricia Noonan Lowell, 409 Williams Street, Longmeadow, MA 01106
- HARTFORD, CONNECTICUT** - Theodora Gronau Barley, 15 Sunset Terrace, West Hartford, CT 06107
- LONDON POCKET** - Ellen Walp Khoshkish, 17 Berkeley Street, Flat #1, Mayfair, London, W1X 5AE ENGLAND
- MANCHESTER AREA, CONNECTICUT** - Laurie Ann Dailey, 65 Fairview Avenue, Enfield, CT 06082
- NEW HAVEN, CONNECTICUT** - Joanne Wiedow Nault, 21 Bayberry Lane, Guilford, CT 06437
- RHODE ISLAND** - Louise Davies Dailey, 191 Tuckertown Road, Wakefield, RI 02879
- SCHENECTADY, NEW YORK** - Maria Larsen Greskovich, 1229 Viewmont Drive, Schenectady, NY 12309

- SOUTHERN FAIRFIELD COUNTY, CONNECTICUT** - Janet Blume Hamilton, 20 Heritage Lane, Stamford, CT 06903
- VERMONT** - Beth Ann Nutter, 4 Kristen Court, Williston, VT 05495

### Beta Province

- ALUMNAE PROVINCE PRESIDENT** - Nancy Ellen Ashbrooke, Missouri Beta, 117 Beekman Street #6D, New York, NY 10038
- BERGEN COUNTY, NEW JERSEY** - Carolyn Carlson Blake, 111 Midwood Avenue, Allendale, NJ 07401
- BUFFALO, NEW YORK** - Kelly O'Hare Borrello, 3898 Ridge Lea Road, Amherst, NY 14228
- GREATER PRINCETON AREA, NEW JERSEY** - Deanna Gianninoto Spoth, 723 Lake Drive, Lawrenceville, NJ 08648



# Fraternity Directory

**HOBOKEN AREA, NEW JERSEY** - Leslie Anne Downs, 140 Main Street, East Rutherford, NJ 07073

**JERSEY SHORE, NEW JERSEY** - Mary Beth Schroeder Cox, 363 20th Avenue, Brick, NJ 08724

**LONG ISLAND-NORTH SHORE, NEW YORK** - Judith Ferguson Wasilchuk, 21 Capitol Heights Road, Oyster Bay, NY 11771

**NEW YORK CITY-MANHATTAN, NEW YORK** - Deborah Jean Gendreau, 97 Ledgebrook Drive, Norwalk, CT 06854

**NORTHERN NEW JERSEY** - Allison Brown McGeough, 44 Colt Road, Summit, NJ 07901

**ROCHESTER, NEW YORK** - Donna Rae Pasch Cianciotto, 12 Kirkby Trail, Fairport, NY 14450

**SOUTHERN NEW JERSEY** - Melissa Andreatna O'Donnell, 29 Eden Avenue, Oaklyn, NJ 08107

**SYRACUSE, NEW YORK** - Susan Davies Wegman, 3409 Bishop Hill Road, Skaneateles, NY 13152

**TORONTO, ONTARIO** - Michele Gabay, 96 Garnier Court, North York, ON M2M 4C9 Canada

**WESTCHESTER COUNTY, NEW YORK** - Lisa Freeman McCarthy, 40 Fox Den Road, Danbury, CT 06811

## Gamma Province

**ALUMNAE PROVINCE PRESIDENT** - Lisa Foote Maloney, West Virginia Alpha, 12801 Misty Creek Lane, Fairfax, VA 22033

**CENTRAL PENNSYLVANIA POCKET** - Lois Small Peterson, 100 Blessing Road, Watsonstown, PA 17777

**CHARLESTON, WEST VIRGINIA** - Hallie Schenker Mason, 517 Carriage Drive, Beckley, WV 25801

**CLARKSBURG, WEST VIRGINIA** - Lori Berardi Gemondo, 56 Garden Circle, Bridgeport, WV 26330

**HARRISBURG-CARLISLE, PENNSYLVANIA** - Elizabeth Bishop Hanemann, 101 Pleasantview Terrace, New Cumberland, PA 17070

**MORGANTOWN, WEST VIRGINIA** - Kelly Schwarck Legg, 30 Brandywine Estates, Morgantown, WV 26505

**PHILADELPHIA-MAIN LINE PENNSYLVANIA** - Lynn Waddell Tyre, 824 Galer Drive, Newtown Square, PA 19073

**PITTSBURGH-NORTH, PENNSYLVANIA** - Dana Marie Benec, 562 Bairdford Road, Gibsonia, PA 15044

**PITTSBURGH-SOUTH HILLS, PENNSYLVANIA** - Phyllis Brownlee Blair, 246 Lynn Haven Drive, Pittsburgh, PA 15228

**WHEELING, WEST VIRGINIA-OHIO VALLEY** - Jenifer Lyn Kujawa, 88 Acheson Avenue, Washington, PA 15301

## Delta Province

**ALUMNAE PROVINCE PRESIDENT** - Mary Stuart Smith, Pennsylvania Gamma, 5004 Oakcrest Drive, Fairfax, VA 22030

**BALTIMORE, MARYLAND** - Elizabeth Bietsch Brizendine, Apartment 732 Blakehurst, 1055 West Joppa Road, Towson, MD 21204

**CENTRAL MARYLAND** - Betty Schaaf DeGraff, 9309 Wild Bees Lane, Columbia, MD 21045

**CHARLOTTESVILLE, VIRGINIA** - Margaret Wright Whiteside, Lands End Farm, Route 4, Box 231, Charlottesville, VA 22911

**CHESAPEAKE, MARYLAND** - Mary Frances Holland Coleman, 23 Rockwell Court, Annapolis, MD 21403

**FREDERICKSBURG, VIRGINIA AREA POCKET** - Shirley Young Spelman, 3031 Mediterranean, Stafford, VA 22554

**MARYLAND-DC SUBURBAN** - Catherine Scanga Ribaldo, 11800 Dewey Road, Silver Spring, MD 20906

**NATION'S CAPITOL-DC** - Stephanie Anne Marshall, 1280 21st Street NW #505, Washington, DC 20036

**NORTHERN VIRGINIA** - Helen Ingham Pixton, 8113 Creekview Drive, Springfield, VA 22153

**POTOMAC FALLS, VIRGINIA** - Meredith Morrill, 680 Southview Court #B, Culpeper, VA 22701

**RICHMOND, VIRGINIA** - Vicki Dembo Parlantieri, 12700 Stonebriar Lane, Richmond, VA 23233

**ROANOKE VALLEY, VIRGINIA** - Marilyn Mitchell Putnam, 1611 Blair Road, Roanoke, VA 24015

**TIDEWATER OF VIRGINIA** - Amy Austin Petersen, 2457 Entrada Avenue, Virginia Beach, VA 23456

**WASHINGTON, DC** - Frances Spruce, Apartment 101, 4720 Chevy Chase Drive, Chevy Chase, MD 20815

## Epsilon Province

**ALUMNAE PROVINCE PRESIDENT** - Caroline Crowley Wilkerson, Virginia Zeta, 7029 Spandril Lane, Charlotte, NC 28215

**ATLANTA, GEORGIA** - Jane Kleinschmidt Hirsch, 6310 Brittny Lane, Cumming, GA 30040

**AUGUSTA, GEORGIA** - Connie Forrest Mintz, 413 Santa Anna Trail, Martinez, GA 30907

**CHARLOTTE, NORTH CAROLINA** - Anne Anderson McKnight, 8433 Greencastle Drive, Charlotte, NC 28210

**COLUMBIA, SOUTH CAROLINA** - Brenda Williams Hellams, 6509 Olde Knight Parkway, Columbia, SC 29209

**DURHAM-ORANGE COUNTY, NORTH CAROLINA** - Ginger Vann King, 6 Surrey Lane, Durham, NC 27707

**GREATER CHARLESTON AREA, SOUTH CAROLINA** - Elizabeth McCroskey White, 707 Angus Court, Mt. Pleasant, SC 29464

**GREATER RALEIGH, NORTH CAROLINA** - Lauren Pekrul Ingall, 6708 Ebon Court, Raleigh, NC 27615

**GREENVILLE, SOUTH CAROLINA** - Thomasia Hancock Cravens, 32 Wiseton Court, Simpsonville, SC 29681

**HILTON HEAD ISLAND, SOUTH CAROLINA** - Margaret Nelson Smith, 8 Genoa Court, Hilton Head Island, SC 29928

**SANDHILLS OF NORTH CAROLINA CARNATION CIRCLE** - Betty Hoffman Dresher, 12 Pine Tree Terr. Foxfire, Jackson Springs, NC 27281

**WESTERN NORTH CAROLINA POCKET** - Lynn Kluberg Cunningham, 460 Windswept Drive, Asheville, NC 28801

**WINSTON-SALEM, NORTH CAROLINA** - Suzanne Bates Meck, 1801 Ramhurst Drive, Clemmons, NC 27012

## Zeta Province

**ALUMNAE PROVINCE PRESIDENT** - Cynthia Stringfield Provencher, Florida Beta, 2900 North Westmoreland Drive, Orlando, FL 32804

**BREVARD COUNTY, FLORIDA** - Jody Marie Hogan, 2185 Windsor Drive, Merritt Island, FL 32952

**DAYTONA AREA, FLORIDA** - Marilyn Reynolds Harman, 2916 Cypress Ridge Trail, Daytona Beach, FL 32124

**DELAND, FLORIDA** - Floy Jean Pflough Hale, 237 West Plymouth Avenue, DeLand, FL 32720

**IMPERIAL POLK COUNTY, FLORIDA** - Mona Calhoun Hosey, 2006 Castle Court, Lakeland, FL 33813

**JACKSONVILLE, FLORIDA** - Barbara Haws Demi, 4375 Kincardine Drive, Jacksonville, FL 32217

**ORLANDO-WINTER PARK, FLORIDA** - Yasmin Susan Choudhury, 2952 Cottage Grove Court, Orlando, FL 32822

**TALLAHASSEE, FLORIDA** - Georgene Stone Hesse, 3033 White Ibis Way, Tallahassee, FL 32308

## Eta Province

**ALUMNAE PROVINCE PRESIDENT** - Charlene Foster Copeland, Virginia Gamma, 561 Sterling Street NE, Palm Bay, FL 32907

**BOCA RATON, FLORIDA** - Marguerite Alderman Thomas, 540 SE 15th Avenue, Deerfield Beach, FL 33441

## Directory

**CHARLOTTE COUNTY, FLORIDA POCKET** - Patricia Barrett Martin, 3264 Village Lane, Port Charlotte, FL 33952

**CLEARWATER, FLORIDA** - Patricia Dunn Moriarty, 2975 Whisper Lane North, Clearwater, FL 33762

**NAPLES, FLORIDA** - Sally Jo Bacon Kleinschmidt, PO Box 524, Naples, FL 34106

**PALM BEACH COUNTY, FLORIDA** - Heather Hill Heiligbrodt, 7206 Glenmoor Drive, West Palm Beach, FL 33409

**ST. PETERSBURG, FLORIDA** - Suchitramba Urs, Apartment 1014, 500 110th Avenue North, St. Petersburg, FL 33716

**SARASOTA-MANATEE, FLORIDA** - Jane Woolner Stanley, 517 Dante Street, Venice, FL 34285

**SOUTHWEST FLORIDA** - Shirley Nichols Christlieb, 859 San Carlos Drive, Fort Myers Beach, FL 33931

**STUART AREA, FLORIDA** - Phyllis Lahren Rosscup, 4306 SW Bimini Circle South, Palm City, FL 34990

**TAMPA, FLORIDA** - Crystal Blalock Jordan, 13531 Lake Magdalene Drive, Tampa, FL 33613

## Theta Province

**ALUMNAE PROVINCE PRESIDENT** - Julie Talley Hooton, Michigan Alpha, 2383 Bevington Road, Rochester Hills, MI 48309

**ANN ARBOR, MICHIGAN** - Amy Loughry Lazarou, 9460 Scully, Whitmore Lake, MI 48189

**BLOOMFIELD HILLS, MICHIGAN** - Martha Bliss Ehlers, 4751 North Chipping Glen, Bloomfield Hills, MI 48302

**DETROIT WEST SUBURBAN, MICHIGAN** - Theresa Louise Deeter, 3131 Monroe Street, Dearborn, MI 48124

**GRAND RAPIDS, MICHIGAN** - Ann Peterson Broker, 2685 Cascade Springs Drive SE, Grand Rapids, MI 49546

**NORTH WOODWARD, MICHIGAN** - Amy Justice-Bouque, 2922 Guilford, Royal Oak, MI 48073

**SOUTHWEST MICHIGAN** - Lorraine Cangelosi Zorbo, 36 Hiawatha Drive, Battle Creek, MI 49015

**TOLEDO, OHIO** - Elizabeth Gunther Sheets, 2222 River Road, Maumee, OH 43537

**TRAVERSE BAY AREA, MICHIGAN** - Janet Wickham Gregory, 6369 Peninsula Drive, Traverse City, MI 49686

## Iota Province

**ALUMNAE PROVINCE PRESIDENT** - Katherine Handel Harris, Ohio Alpha, 94 Chadbourne Drive, Hudson, OH 44236

**AKRON, OHIO** - Betsy Strother Davis, 866 Lafayette, Akron, OH 44303

**ATHENS, OHIO** - Mary-Elizabeth Lasher Myers, 33 Meadow Lane, Athens, OH 45701

**CANTON, OHIO** - Ann Davies Moyer, 1814 Amarillo Street Northwest, North Canton, OH 44720

**CINCINNATI, OHIO** - Judith Douglas Overstreet, 8910 Roan Lane, Cincinnati, OH 45242

**CLEVELAND EAST, OHIO** - Marjorie Daubenmire Katherman, 6597 Kingswood Drive, Mayfield Heights, OH 44124

**CLEVELAND WEST, OHIO** - Christy Toy Poorman, 20566 Beaconsfield Blvd, Rocky River, OH 44116

**COLUMBUS, OHIO** - Joanne French Taylor, 1025 Oberlin Drive, Columbus, OH 43221

**DAYTON, OHIO** - Laura Sabiston Beyer, 211 Wiltshire Boulevard, Dayton, OH 45419

**PORTSMOUTH, OHIO** - Cynthia Walker Kayser, 2212 Cleveland Avenue, Portsmouth, OH 45662

**WESTERN RESERVE, OHIO** - Tracy Parsons Jensen, 5811 Sunset Drive, Hudson, OH 44236

## Kappa Province

**ALUMNAE PROVINCE PRESIDENT** - Lora Ruble Bohannon, Georgia Alpha, 4920 Oakmont Bend Drive, Alpharetta, GA 30004

**BIRMINGHAM, ALABAMA** - Annette Mitchell Mills, 2128 Vestridge Drive, Birmingham, AL 35216

**BIRMINGHAM, ALABAMA NIGHT GROUP** - Leigh Ann Jeter, 3416 Woodcrest Drive, Birmingham, AL 35216

**CHATTANOOGA, TENNESSEE** - Barbara Anderson Recktenwald, 1022 Scenic Highway, Lookout Mountain, TN 37350

**HUNTSVILLE, ALABAMA** - Leslie Titcomb Shepard, 127 Raleigh Way NE, Huntsville, AL 35811

**KNOXVILLE, TENNESSEE** - Sue Meredith Carey, 3405 Commodore Pointe, Knoxville, TN 37922

**LEXINGTON, KENTUCKY** - Patricia Krieger Vanaman, 2044A Fountaine Road, Lexington, KY 40502

**LOUISVILLE, KENTUCKY** - Elisabeth Long Young, 1805 Grantham Court, Louisville, KY 40222

**MONTGOMERY, ALABAMA** - Rebecca Sanderson Haynes, 1639 London Town Lane, Montgomery, AL 36117

**NASHVILLE, TENNESSEE** - Rebecca Ann Griffith, 1808 Hayes Street, Nashville, TN 37203

**OWENSBORO, KENTUCKY POCKET** - Ashlie Blaney Iracane, 3411 Ashlawn Drive, Owensboro, KY 42301

**THOMASVILLE, ALABAMA POCKET** - Alisa Rolison Davis, 29 Alabama Avenue, Thomasville, AL 36784

**TUSCALOOSA, ALABAMA** - Amy Rebecca Smith, 330 Summit Place, Birmingham, AL 35243

## Lambda Province

**ALUMNAE PROVINCE PRESIDENT** - Lisa Lahman Carmin, Indiana Gamma, 100 Hampton Court, Bloomington, IN 47408

**BLOOMINGTON, INDIANA** - Carol Edlund Pierce, 1006 Sherbrooke Court, Bloomington, IN 47401

**FORT WAYNE, INDIANA** - Kimberly Crozier-Willson, 201 Weeks Drive, Albion, IN 46701

**FRANKLIN, INDIANA** - Stephanie Ann Sakes, 71 1/2 East Jefferson Street, Franklin, IN 46131

**INDIANAPOLIS, INDIANA** - Shirley Gayda Dora, 5121 Green Braes East, Indianapolis, IN 46234

**INDIANAPOLIS-SOUTH SUBURBAN, INDIANA** - Susan Mills Stretchberry, 284 Sunset Boulevard, Greenwood, IN 46142

**LAFAYETTE, INDIANA** - Gail Cox Vonderheide, 1705 Teakwood Court, Lafayette, IN 47905

**MICHIANA, INDIANA-MICHIGAN** - Jeanette Mueller Slaby, 1207 Riverside Drive, South Bend, IN 46616

**MUNCIE, INDIANA** - Julie Pratt Simmons, 3600 West Gatewood Lane, Muncie, IN 47304

**RICHMOND, INDIANA** - Elva Downing Turner, 4380 South C Street, Richmond, IN 47374

**SOUTHEASTERN INDIANA** - Deborah Loudenback Smith, 3592 W. County Rd. 500 South, Greensburg, IN 47240

**SOUTHLAKE, INDIANA** - Charlene Markovich Kamanaroff, 7728 Delaware Place, Merrillville, IN 46410

**VALPARAISO, INDIANA** - Jennifer Lodovisi Evanseck, 3204 Saddlebrook Crossing, Valparaiso, IN 46385

## Mu Province

**ALUMNAE PROVINCE PRESIDENT** - Glenda Mika Dailey, Illinois Iota, 135 Arlington Avenue, Elmhurst, IL 60126

**ARLINGTON HEIGHTS, ILLINOIS** - Nancy Cooney Taub, 884 Bosworth Field, Barrington, IL 60010

**CHICAGO SOUTH SUBURBAN, ILLINOIS** - Sally Sundstrom Barnes, 1020 Evans Road, Flossmoor, IL 60422

**CHICAGO WEST SUBURBAN, ILLINOIS** - Mary Margaret Bower, 1020 Claremont Drive, Downers Grove, IL 60516 and Kathleen Kunkle, 6320 Blackhawk Trail, Indian Head Park, IL 60525

# Fraternity Directory

**CHICAGO WINDY CITY, ILLINOIS** - Kristin Ann Comes, Apartment 1110, 444 West St. James Place, Chicago, IL 60614

**DUPAGE COUNTY, ILLINOIS** - Phyllis Gentry Renfro, 479 Anthony Street, Glen Ellyn, IL 60137

**FOX RIVER VALLEY, ILLINOIS** - Stephanie Schlievert Pavlik, 709 Lancaster, Geneva, IL 60134

**GLEN ELLYN-WHEATON, ILLINOIS** - Erin Phelan Dierking, 1862 Wingate Lane, Wheaton, IL 60187

**HINSDALE-NAPERVILLE, ILLINOIS** - Debora Zaccardelli Zimmer, 531 North Elm Street, Hinsdale, IL 60521

**LAKE COUNTY, ILLINOIS** - Suzanne Gill Kriz, 15646 Idlewood Lane, Libertyville, IL 60048

**LAKE SHORE, ILLINOIS** - Margaret Liebers Lovelette, 2038 Butternut Lane, Northbrook, IL 60062

**NORTH SHORE, ILLINOIS CARNATION CIRCLE** - Edith Mitten Burns, 15 Warrington Drive, Lake Bluff, IL 60044

**OAK PARK-RIVER FOREST, ILLINOIS** - Lisa Guglielmone Gillis, 1043 Keystone Avenue, River Forest, IL 60305 and Debra Jackowniak, 3304 North Southpark #2, Chicago, IL 60657

## Nu Province

**ALUMNAE PROVINCE PRESIDENT** - Cheryl Raber Patterson, Illinois Theta, 501 South Main Street, Morton, IL 61550

**ALTON-EDWARDSVILLE, ILLINOIS** - Barbara Smith Eckhard, 4701 Brecht Lane, Godfrey, IL 62035

**AVON-BUSHNELL-MACOMB, ILLINOIS** - Anne Eckley Haynes, 21 Sunset Lane, Bushnell, IL 61422

**BELLEVILLE AREA, ILLINOIS** - Patricia Murphy Fairbairn, 27 Melwood, Belleville, IL 62223

**BLOOMINGTON-NORMAL ILLINOIS** - Amy Sue Mersinger, 1311 South Main, Bloomington, IL 61701

**CHAMPAIGN-URBANA, ILLINOIS** - Abby Turner Hobbs, 914 West Park Avenue, Champaign, IL 61821

**DECATUR, ILLINOIS** - Betty Traver Zeaman, 10 Eighth Drive, Decatur, IL 62521

**GALESBURG, ILLINOIS** - Mary Mangieri Burgland, 1441 North Prairie, Galesburg, IL 61401

**MONMOUTH, ILLINOIS** - Tiffany Mekshes Cole, 409 North 3rd Street, Monmouth, IL 61462

**PEORIA, ILLINOIS** - Lisa Yerby Grant, 2710 West Kenwood, West Peoria, IL 61604

**SOUTHERN ILLINOIS** - Susan Smedley Jenkins, 501 Emerald Lane, Carbondale, IL 62901

**SPRINGFIELD, ILLINOIS** - Kammie Haynes, 2604 Parsifal Avenue, Springfield, IL 62704

## Xi Province

**ALUMNAE PROVINCE PRESIDENT** - Elizabeth Ann Ellison, Louisiana Beta, 128 Karolwood Drive, Lafayette, LA 70503

**ALEXANDRIA, LOUISIANA** - Susan Dupuy Myrick, 115 Comanche Drive, Pineville, LA 71360

**BATON ROUGE, LOUISIANA** - Rebecca Jo Anderson, Apartment D, 1106 West Lee Drive, Baton Rouge, LA 70820

**EASTERN SHORE ALABAMA** - Emily Bell Wirtes, PO Box 332, Point Clear, AL 36564

**HATTIESBURG, MISSISSIPPI** - Elizabeth Ann Ellison, 128 Karolwood Drive, Lafayette, LA 70503

**JACKSON, MISSISSIPPI** - Leslie Marque Rogers, 132 Glenwood Drive, Madison, MS 39110

**LAFAYETTE, LOUISIANA** - Shannon Herpin Turnley, 516 South Irving Avenue, Kablan, LA 70548

**LAKE CHARLES, LOUISIANA** - Sara McLeod Judson, 1722 Enterprise Boulevard, Lake Charles, LA 70601

**LOUISIANA NORTHSORE** - Theda Meade Cahill, PO Box 266, Abita Springs, LA 70420

**MERIDIAN, MISSISSIPPI** - Paige Brown Brooks, 8373 Northside Drive, Meridian, MS 39305

**MISSISSIPPI GULF COAST** - Lucia Fishel, 303 9th Street, Bay St. Louis, MS 39520

**MOBILE, ALABAMA** - Sally Dowling Johnston, 203 Ridgewood Place, Mobile, AL 36608

**MONROE, LOUISIANA** - Laura Chapman Anderson, 306 Briarcliff, West Monroe, LA 71291

**NEW ORLEANS, LOUISIANA** - Nancy Blum Hadden, 6306 Prytania Street, New Orleans, LA 70118

**PENSACOLA, FLORIDA** - Marjorie Gowing Taylor, 4195 Baisden Road, Pensacola, FL 32503

**SHREVEPORT, LOUISIANA** - Kristine Dietrich Keating, 1012 Ockley Drive, Shreveport, LA 71106

**SLIDELL, LOUISIANA** - Leslie Bouler Patrick, 107 Ayshire Court, Slidell, LA 70461

## Omicron Province

**ALUMNAE PROVINCE PRESIDENT** - Patricia Rudy Fleet, Indiana Delta, 6419 Timber Ridge, Edina, MN 55439

**BELOIT, WISCONSIN POCKET** - Helen Mackdem Eldred, 1549 South Ridge Road, Beloit, WI 53511

**GREATER GRAND FORKS, NORTH DAKOTA** - Nan Stokesberry Vaaler, 4574 Belmont Road, Grand Forks, ND 58201

**MADISON, WISCONSIN** - Jennifer Smith Taylor, 4005 Birch Avenue, Madison, WI 53711

**MILWAUKEE, WISCONSIN** - Carol Crouse Hudson, 1828 Underwood Avenue, Wauwatosa, WI 53213

**MINNEAPOLIS, MINNESOTA** - Stephanie Jo Pokorney, 913 Woodhill Court, Hopkins, MN 55343

**ROCKFORD, ILLINOIS** - Margaret Wiseman Shappert, 7950 Distillery Road, Belvidere, IL 61008

**SOUTH SUBURBAN MINNEAPOLIS/ST. PAUL, MINNESOTA** - Lauren Loflin Reardon, 5248 Heritage Hills Drive, Bloomington, MN 55437

**ST. PAUL, MINNESOTA** - Mary Lawrence, #508, 208 Western Avenue North, St. Paul, MN 55102

**WINNIPEG AREA, MANITOBA** - Barbara Wozny Larkins, 110 Eastcote Drive, Winnipeg, MB R2N 2Y6 Canada

## Pi Province

**ALUMNAE PROVINCE PRESIDENT** - Mary Kiewer Hughey, Oklahoma Beta, 404 Martin Drive North, Bellevue, NE 68005

**AMES, IOWA** - Jane Montgomery Herbold, 3806 Phoenix Street, Ames, IA 50014

**CEDAR RAPIDS, IOWA** - Suzanne Rosien Dostal, 4625 Northwood Drive NE, Cedar Rapids, IA 52402

**Des Moines, Iowa** - Wynn Ann Walters, 1219 34th Street, Des Moines, IA 50311

**HASTINGS, NEBRASKA POCKET** - Marilyn Moomey Nielsen, #10 Village Drive, Hastings, NE 68901

**INDIANOLA, IOWA** - Lora Diane Duncan, 5219 Douglas Avenue, Des Moines, IA 50310

**IOWA CITY, IOWA** - Sheryl Harder Skaugstad, 602 South Summit Street, Iowa City, IA 52240

**LINCOLN, NEBRASKA** - Kathleen Kuethe Wortman, 2916 Cedar Avenue, Lincoln, NE 68502

**Mt. Pleasant, Iowa** - Margaret Bentzinger Gregory, 320 North Park, Donnellson, IA 52625

**OMAHA, NEBRASKA** - Julie Ann Richards, 1403 Marbee Drive #1, Omaha, NE 68124

**QUAD CITIES, ILLINOIS-IOWA** - Mary E. Garrels, 2926 Jefferson Avenue, Davenport, IA 52803

## Rho Province

**ALUMNAE PROVINCE PRESIDENT** - Barbara Lee Fay, Illinois Beta-Delta, 5500 West 85th Terrace, Overland Park, KS 66207

**COLUMBIA, MISSOURI** - Elizabeth Bridwell O'Connell, 3103 Yorktown Drive, Columbia, MO 65203

**HAYS, KANSAS POCKET** - Cheryl Campbell Jeter, 1117 Oakmont, Hays, KS 67601

**HUTCHINSON, KANSAS** - Carol Stockham Murray, 2401 Sand Dunes Drive, Hutchinson, KS 67502

**JEFFERSON CITY, MISSOURI POCKET** - Amy Diane Walz Freeman, 1324 Roseview Drive, Jefferson City, MO 65101

# Fraternity Directory

- KANSAS CITY, KANSAS** - Mary Lynn Rogers  
Holbrook, 11101 West 119th Terrace,  
Overland Park, KS 66213
- KANSAS CITY, MISSOURI-SHAWNEE MISSION,  
KANSAS** - Adrienne Childers Melcher, 3816  
West 65 Street, Shawnee Mission,  
KS 66208
- KANSAS CITY, MISSOURI-SHAWNEE MISSION,  
KANSAS EVENING GROUP** - Jorie Niemiec  
Siegwald, #8, 9600 West 118th Terrace,  
Overland Park, KS 66210
- LAWRENCE, KANSAS** - Judith Anthony Wright,  
1046 Wellington Road, Lawrence,  
KS 66049
- MANHATTAN, KANSAS** - Cynthia Peshla  
Schwensen, 710 Hillcrest, Clay Center,  
KS 67432
- ST. JOSEPH, MISSOURI** - Trisha Graves  
Johnson, 2427 Ashland Avenue, St. Joseph,  
MO 64506
- ST. LOUIS, MISSOURI** - Nancy Steiner Sheridan,  
14617 Timberlake Manor Court,  
Chesterfield, MO 63017
- SPRINGFIELD, MISSOURI** - Ellen Breithaupt  
Chindlund, 903 East McClernon,  
Springfield, MO 65803
- TOPEKA, KANSAS** - Jane Kathyne Hillyer, 6700  
Aylesbury Road, Topeka, KS 66610
- WICHITA, KANSAS** - Frances Garver Copeland,  
415 North Broadview, Wichita, KS 67208

## Sigma Province

- ALUMNAE PROVINCE PRESIDENT** - Jane Porter  
Warmack, Iowa Gamma, #3 Wood Place,  
Texarkana, AR 71854
- CONWAY, ARKANSAS** - Sloan Deer Powell, 13  
Woodbridge Drive, Conway, AR 72032
- EASTERN ARKANSAS POCKET** - Courtney Carter  
Zeiser, 105 Oak Forrest, Helena, AR 72342
- FORREST CITY, ARKANSAS** - Catherine Long  
Cline, 1415 East Broadway Street, Forrest  
City, AR 72335
- FORT SMITH, ARKANSAS** - Sara Shipley Bowers,  
6400 South Lakewood Drive, Van Buren,  
AR 72956
- HOT SPRINGS, ARKANSAS** - Shannon E.  
Luebben, 23 Flintwood Drive, Little Rock,  
AR 72227
- LITTLE ROCK, ARKANSAS** - Elizabeth Rainwater,  
2200 Andover #1001, Little Rock,  
AR 72227
- MEMPHIS, TENNESSEE** - Courtney Clement  
Ciaramitaro, 3617 Aurora Circle, Memphis,  
TN 38111
- NORTHWEST ARKANSAS** - Susan Kay Hart, 2451  
Hampton Court, Fayetteville, AR 72703
- TEXARKANA, ARKANSAS-TEXAS** - Mary Collom  
Fore, 207 Georgian Terrace, Texarkana,  
AR 71854
- TUPELO, MISSISSIPPI POCKET** - Kathryn  
Tenkhoff Gatlin, 1936 Allyson Drive,  
Tupelo, MS 38801

## Tau Province

- ALUMNAE PROVINCE PRESIDENT** - Sarah Ware  
Hoch, Oklahoma Alpha, 1708 Drakestone,  
Oklahoma City, OK 73120
- ADA, OKLAHOMA POCKET** - Lara Redman  
Broadrick, 104 West 17th, Ada, OK 74820
- ARDMORE, OKLAHOMA** - Sherry Wilson Healey,  
2208 Hickory Drive, Ardmore, OK 73401
- BARTLESVILLE, OKLAHOMA** - Stacey Bynum  
Gallery, Rt 1 Box 223, Dewey, OK 74029
- DUNCAN, OKLAHOMA** - Eleanor Douthitt  
Glasscock, 2104 Country Terrace, Duncan,  
OK 73533
- EDMOND, OKLAHOMA** - Lisa Pithan Sabatino,  
1400 Lamplighter Lane, Edmond,  
OK 73034
- ENID, OKLAHOMA** - Mary Bogert Iselin, 1522  
Tahlequah, Enid, OK 73703
- KAY COUNTY-PONCA CITY, OKLAHOMA** -  
Melissa Munderloh Smith, 1409 Cookson,  
Ponca City, OK 74604
- LAWTON-FORT SILL, OKLAHOMA** - Katherine  
Gilkeson Young, 2008 SW 38th Street,  
Lawton, OK 73505
- MIDWEST CITY, OKLAHOMA POCKET** - Coleen  
Hughey Alward, 5321 Mackleman Drive,  
Oklahoma City, OK 73135
- MUSKOGEE, OKLAHOMA** - Trude Steele  
Norman, PO Box 1096, Muskogee, OK  
74402
- NORMAN, OKLAHOMA** - Elizabeth Nelson  
Ridgway, 3804 Wyndham Place, Norman,  
OK 73072
- OKLAHOMA CITY, OKLAHOMA** - Colette Denney  
Buxton, 1442 NW 36th Street, Oklahoma  
City, OK 73118
- PAULS VALLEY, OKLAHOMA POCKET** - Susan  
Pyeatt Henderson, 821 North Walnut,  
Pauls Valley, OK 73075
- SAPULPA, OKLAHOMA POCKET** - Theresa Wisor  
Collins, 411 North Hodge, Sapulpa,  
OK 74066
- STILLWATER, OKLAHOMA** - Janis Turner Polk,  
2204 Oak Trail Drive, Stillwater, OK 74074
- TULSA, OKLAHOMA** - Louise McMasters Bryant,  
6677 East 60th Place, Tulsa, OK 74145

## Upsilon Province

- ALUMNAE PROVINCE PRESIDENT** - Peggy Wright  
Laidlaw, California Gamma, 5708 Archer  
Court, Dallas, TX 75252
- ARLINGTON, TEXAS** - Robin Moore Buchanan,  
2214 Chapel Downs, Arlington, TX 76017
- DALLAS, TEXAS** - E. Elizabeth Mizell  
Schoenvogel, 4224 Stanhope, Dallas,  
TX 75205
- DALLAS, TEXAS JUNIOR DAY GROUP** - Delaney  
Lancaster Rolfe, 4321 Stanhope Street,  
Dallas, TX 75205
- DALLAS, TEXAS JUNIOR NIGHT GROUP** -  
Suzanne Gerum Stiles, 2921 Rosedale  
Avenue, Dallas, TX 75205

- DENTON, TEXAS** - Linda Rochelle Lee, 918  
Bayfield Drive, Denton, TX 76201
- EAST TEXAS POCKET** - Helen Sue Thomas  
Martin, #3 Huntington Street, Longview,  
TX 75601
- FORT WORTH, TEXAS** - Deborah Kyle McGee,  
205 Hazelwood, Fort Worth, TX 76107
- LUFKIN, TEXAS POCKET** - Claire Webber  
McLaurin, 1707 Copeland Street, Lufkin,  
TX 75904
- MARSHALL, TEXAS POCKET** - Suzanne Watson  
Planchard, 402 Yates, Marshall, TX 75670
- METROCREST, TEXAS** - Brandi Davis Ewoldt,  
3105 Green Hollow Court, Highland  
Village, TX 75077
- MID-CITIES, TEXAS** - Diane Mirr Spangler,  
2708 Greenbrook Court, Grapevine,  
TX 76051
- NORTHEAST TEXAS POCKET** - Laurie Manning  
Ramsay, Route 2, Box 439, Mount Vernon,  
TX 75457
- RICHARDSON-PLANO, TEXAS** - Tawn Merklind  
Merrill, 4605 Hinton Drive, Plano,  
TX 75024
- SHERMAN-DENISON, TEXAS** - Susan Weber  
Munson, 911 South Fairbanks, Denison,  
TX 75020
- SOUTHWEST DALLAS COUNTY, TEXAS POCKET** -  
Alicia Harris Clark, 602 Mobley Road,  
Cedar Hill, TX 75104
- TEMPLE, TEXAS POCKET** - Kimberly Christie  
Burke, 4809 Wellington Court, Temple,  
TX 76502
- TYLER, TEXAS** - Beth Leachman Whitney, 2601  
South Chilton Avenue, Tyler, TX 75701
- WACO, TEXAS** - Janice Gordon Stewart, 732  
Arlington, Waco, TX 76712

## Phi Province

- ALUMNAE PROVINCE PRESIDENT** - Madalyn  
Marchman Jones, Arkansas Alpha, 16622  
Manningtree Lane, Spring, TX 77379
- BAY AREA, TEXAS** - Dianne Gunderson Friel,  
PO Box 580562, Houston, TX 77258
- BEAUMONT, TEXAS** - Jana Heilman Elliott, 3920  
North Street, Beaumont, TX 77706
- BRAZOS VALLEY, TEXAS** - Susan Waid Childs,  
15425 Archopulos, College Station,  
TX 77845
- CONROE-THE WOODLANDS, TEXAS** - Laurie  
Bacon Waters, 104 Stone Mountain Drive,  
Conroe, TX 77302
- CORPUS CHRISTI, TEXAS** - Joanne Shackelford  
Arnold, 929 Coral Place, Corpus Christi,  
TX 78411
- CYPRESS CREEK-NORTHWEST HOUSTON, TEXAS** -  
Lisa Marie Kelly, 16839 Scenic Gardens  
Drive, Spring, TX 77379
- EAST FORT BEND COUNTY, TEXAS** - Shelly Cain  
Caldwell, 2831 Cane Field, Sugar Land,  
TX 77479

# Fraternity Directory

**HARLINGEN-BROWNSVILLE, TEXAS** - Julie Steves Powers, 110 Brentwood, Harlingen, TX 78550

**HIDALGO COUNTY, TEXAS POCKET** - Trudie Elmore Abbott, 408 Byron Nelson, McAllen, TX 78503

**HOUSTON, TEXAS** - Sally Cooksey Reynolds, 5212 Briar Drive, Houston, TX 77056

**HOUSTON, TEXAS JUNIOR NIGHT GROUP** - Lynette Neugebauer Snider, 5631 Piping Rock, Houston, TX 77056

**KATY, TEXAS** - Jacquelynn Siebert Green, 22707 Ravens Lake Drive, Katy, TX 77450

**KINGWOOD AREA, TEXAS POCKET** - Marie Williams Halvatzis, 1506 Chestnut Grove Lane, Kingwood, TX 77345

**VICTORIA, TEXAS** - Ann Spears Hudson, 209 Woodlands Lane, Victoria, TX 77904

## Chi Province

**ALUMNAE PROVINCE PRESIDENT** - Maria Alberico Morgan, Utah Alpha, 32 Silverhorn Drive, San Antonio, TX 78216

**AUSTIN, TEXAS** - Mary Anne Young Potter, 5202 Kite Tail Drive, Austin, TX 78730

**ABILENE, TEXAS** - Julie Brown Denny, 1454 Woodland Trail, Abilene, TX 79605

**ALBUQUERQUE, NEW MEXICO** - Julie Steputis Nunley, 10287 Las Casitas Court NE, Albuquerque, NM 87111

**AMARILLO, TEXAS** - Diedre Ann Schuler, 3535 West Point Drive, Amarillo, TX 79121

**BRECKENRIDGE, TEXAS POCKET** - Michele Hickey Arnot, 1302 West Walker, Breckenridge, TX 76424

**EL PASO, TEXAS** - Lana Baltzley Harrison, 1120 Regal Ridge Drive, El Paso, TX 79912

**GRAHAM, TEXAS POCKET** - Ann Chiles Graham, 1510 Oak Forest Drive, Graham, TX 76450

**HILL COUNTRY, TEXAS** - Anna Moseley Osborn, 103 Connally Drive, Kerrville, TX 78028

**LAS CRUCES, NEW MEXICO** - Karin Gustafson Davidson, PO Box 279, San Miguel, NM 88058

**LUBBOCK, TEXAS** - Tracy Elizabeth Gilbreath, 3205 64th Street, Lubbock, TX 79413

**MEXICO CITY, MEXICO POCKET** - Patricia Atkin Bano, General Mendez 3, 11830 Mexico DF, MEXICO

**MIDLAND, TEXAS** - Virginia Hathoot Bailey, 1703 North I Street, Midland, TX 79705

**PAMPA, TEXAS POCKET** - Linda Brumley Johnson, 2516 Chestnut Drive, Pampa, TX 79065

**ROSWELL, NEW MEXICO** - Ann Lynn Stege Anderson, 612 North Kentucky Street, Roswell, NM 88201

**SAN ANGELO, TEXAS** - Martha Page Oliver, 3121 Oak Mountain Trail, San Angelo, TX 76904

**SAN ANTONIO, TEXAS** - Hilary Hale Cline, 1215 Vista del Rio, San Antonio, TX 78216

**WICHITA FALLS, TEXAS** - Sara Jane Snell Wood, 2201 Ellingham Drive, Wichita Falls, TX 76308

## Psi Province

**ALUMNAE PROVINCE PRESIDENT** - Sidney Cottle Nelson, Colorado Gamma, 2369 South Holland Court, Lakewood, CO 80227

**AURORA, COLORADO** - Karla Seybert Ives, 14133 East Florida Place, Aurora, CO 80012

**BOULDER, COLORADO** - Linda Werner Cook, 4035 Old Westbury Court, Boulder, CO 80301

**CASPER, WYOMING** - Julianne Gary, 153 North Park, Casper, WY 82601 and Erin Wilkes Wesnitzer, 2024 Hyview, Casper, WY 82604 or Erin Wilkes Wesnitzer, 2024 Hyview, Casper, WY 82604

**CHEYENNE, WYOMING** - Ruth Harrower Arnold, 10018 Wayne Road, Cheyenne, WY 82009

**COLORADO ROCKY MOUNTAIN** - Mary Jeurink MacRossie, PO Box 2167, Eagle, CO 81631

**COLORADO SPRINGS, COLORADO** - Anne Hopley Watson, 506 Penrose Boulevard, Colorado Springs, CO 80906

**DENVER, COLORADO** - Amy Doran Inkell, 1811 South Quebec Way #18, Denver, CO 80231

**ESTES PARK, COLORADO POCKET** - Loretta Dennard DeWitt, 3200 Rockwood Lane North, Estes Park, CO 80517

**EVERGREEN, COLORADO** - Mary Windle Beaty, 5403 Coyote Canyon Way #A, Morrison, CO 80465

**FORT COLLINS, COLORADO** - Elizabeth Dunning Jones, 625 Warren Landing, Fort Collins, CO 80525

**GRAND JUNCTION, COLORADO POCKET** - Myra Hrubes Brown, 576 Heidel, Grand Junction, CO 81504

**HIGHLANDS RANCH, COLORADO** - Marlyce Eiesland Buch, 3763 West Bucknell Drive, Highlands Ranch, CO 80126

**JEFFERSON COUNTY, COLORADO** - Lisa Gamel Scott, 5200 Aspen Drive, Littleton, CO 80123

**LARAMIE, WYOMING** - Kay Hefti Coletti, 162 Corthell Road, Laramie, WY 82070

**LOVELAND, COLORADO POCKET** - Marisa Morgan Dallman, PO Box 1443, Loveland, CO 80539

**NORTHERN COLORADO** - Susan Benson Todd, 1756 37th Avenue Place, Greeley, CO 80634

**PUEBLO, COLORADO** - Wanda Morrison Glover, 1 Twilight Lane, Pueblo, CO 81005

**SOUTHERN DOUGLAS COUNTY, COLORADO** - Patricia Davisson Brown, 7818 Towhee Road, Parker, CO 80134

## Omega Province

**ALUMNAE PROVINCE PRESIDENT** - Luellen Clymo Smith, Washington Gamma, 12917 205th Court SE, Issaquah, WA 98027

**ANCHORAGE, ALASKA** - Elizabeth Jane Snodgrass, 8440 Ragged Top Circle, Anchorage, AK 99504

**BELLEVUE-EASTSIDE, WASHINGTON** - Melissa Roberts Holmes, 15131 NE 154th Street, Woodinville, WA 98072

**OLYMPIA, WASHINGTON** - Nancy Salt Dahlen, 2226 Vista Avenue SE, Olympia, WA 98501

**SEATTLE, WASHINGTON** - Nancy Johnson Anklam, PO Box 213, Bothell, WA 98041

**SKAGIT-CAMANO, WASHINGTON POCKET** - Julianne Vanasse Vaux, 5108 Heather Court, Anacortes, WA 98221

**SOUTHWEST WASHINGTON POCKET** - Alexandra Schweier Ullman, 23504 NE 120th Court, Battle Ground, WA 98604

**SPOKANE, WASHINGTON** - Joan Hanson Degerstrom, 2906 East Snowberry Lane, Spokane, WA 99223

**TACOMA, WASHINGTON** - Sally Hanson Flaherty, 13311 Bracken Fern Drive NW, Gig Harbor, WA 98332

**UPPER OLYMPIC PENINSULA POCKET** - Alba Halverson Hiestand, 41 Sundial Loop, Sequim, WA 98382

**VANCOUVER, BRITISH COLUMBIA** - Wendy Newton Reifel, 6325 McCleery, Vancouver, BC V6N 1G5 Canada

**VASHON ISLAND, WASHINGTON POCKET** - Karen Paulson Kirschner, 22338 91st Place SW, Vashon, WA 98070

**WENATCHEE, WASHINGTON** - Bettie Tyrrell Kolb, 1450 Castlerock #15, Wenatchee, WA 98801

**YAKIMA, WASHINGTON** - Sandra Scaman Rowland, 3141 Naches Heights Road, Yakima, WA 98908

## Alpha-Beta Province

**ALUMNAE PROVINCE PRESIDENT** - Mari Lou Psihogios Diamond, Oregon Alpha, 17821 Marylcreek Drive, Lake Oswego, OR 97034

**BOISE, IDAHO** - Andrea Noland Lange, 12047 West Patrina Drive, Boise, ID 83713

**BOZEMAN, MONTANA** - Melanie Bury Schell, 121 Michael Grove Avenue, Bozeman, MT 59718

**CALGARY, ALBERTA** - Helen Steeves Jull, 1502 330 26th Avenue SW, Calgary, AB T2S 2T3 Canada

**CORVALLIS, OREGON** - Lynne Morphew Neville, 7575 NW McDonald Place, Corvallis, OR 97330

**EDMONTON, ALBERTA** - Colleen Conroy Murray, #24, 10172-118 Street, Edmonton, AB T5K 1Y4 Canada

# Fraternity Directory

**EUGENE, OREGON** - Joanne Wilson Solomon,  
2473 Lariat Mesa, Eugene, OR 97401

**IDAHO FALLS, IDAHO POCKET** - Kathryn  
Burgess Martin, 4931 North 125 West,  
Idaho Falls, ID 83402

**LAKE OSWEGO-DUNTHORPE, OREGON** - Leslie  
Dardano Hasson, 13048 Knaus Road, Lake  
Oswego, OR 97034

**MOSCOW, IDAHO** - Dana Wortham Wekerle,  
1699 Appaloosa Road, Moscow, ID 83843

**PORTLAND, OREGON** - Erin Leake Friesen,  
2015 SE Grant Street, Portland, OR 97214

**SALEM, OREGON** - Carolyn Brady Lindbeck,  
1417 Orchard Heights Road NW, Salem,  
OR 97304

**SALT LAKE CITY, UTAH** - Jennifer Austin Libin,  
218 New Century Lane #F18, Salt Lake  
City, UT 84115 and Michelle Lindberg, PO  
Box 680613, Park City, UT 84068

## Alpha-Gamma Province

**ALUMNAE PROVINCE PRESIDENT** - Patricia Getto  
Plumlee, Kansas Alpha, 10384 Melissa  
Court, Cupertino, CA 95014

**CENTRAL SAN JOAQUIN VALLEY, CALIFORNIA** -  
Myrna Robertson Estes, 157 Peach, Clovis,  
CA 93612

**CONTRA COSTA, CALIFORNIA** - Edith Anderson  
Lee, 350 North Civic Drive #408, Walnut  
Creek, CA 94596

**MARIN COUNTY, CALIFORNIA** - Janice Fraser,  
PO Box 1595, Ross, CA 94957

**MONTEREY PENINSULA, CALIFORNIA** - Linda  
Spinner Piper, PO Box 1749, Pebble Beach,  
CA 93953

**PALO ALTO, CALIFORNIA** - Brooke Pryor  
Schiller, 550 Kelly Way, Palo Alto,  
CA 94306

**RENO, NEVADA** - Beverly Pincolini Reginato,  
2780 Outlook Drive, Reno, NV 89509

**SACRAMENTO, CALIFORNIA** - Jane Watson  
Blythe, 4228 Callanan Court, Carmichael,  
CA 95608

**SAN FRANCISCO, CALIFORNIA** - Jocelyn Morris,  
245 Northpoint Street #104, San  
Francisco, CA 94133

**SAN JOSE, CALIFORNIA** - Kari Alise Blair, 2460  
Plummer Avenue, San Jose, CA 95125

**SAN MATEO COUNTY, CALIFORNIA** - Adrienne  
Hiscox Mitchell, 165 Redwood Drive,  
Hillsborough, CA 94010

**STANISLAUS COUNTY, CALIFORNIA** - Claudia  
Allen Vicino, 2716 Hobart Way, Modesto,  
CA 95351

**VALLEY OF THE MOON, CALIFORNIA** - Sue  
Hallin Barnes, 21145 Via Colombard,  
Sonoma, CA 95476

## Alpha-Delta Province

**ALUMNAE PROVINCE PRESIDENT** - Jill Jensen  
Meynen, Illinois Iota, 3564 Del Amo  
Boulevard #A, Torrance, CA 90503

**BAKERSFIELD, CALIFORNIA** - Nancy Fogle  
Pollard, 120 Hume Lane, Bakersfield,  
CA 93309

**CENTRAL ORANGE COUNTY, CALIFORNIA** -  
Sharon Parker Algeo, 745 South Londerry  
Lane, Anaheim Hills, CA 92803

**CONEJO VALLEY, CALIFORNIA** - Laura Jane  
Walker, 2686 Regina Avenue, Thousand  
Oaks, CA 91360

**GLENDALE, CALIFORNIA** - Nancy Holland  
DeWind, 321 Wonderview Drive, Glendale,  
CA 91202

**LA CANADA, CALIFORNIA** - Katharine  
Zimmerman Lincoln, 756 Greenridge Drive,  
La Canada, CA 91011

**LONG BEACH, CALIFORNIA** - Christine Yuri  
Maeoka, 233 A Granada Avenue, Long  
Beach, CA 90803

**LOS ANGELES-SANTA MONICA, CALIFORNIA** -  
Michelle Koerwer Higgins, 4294 Motor  
Avenue, Culver City, CA 90232

**PASADENA, CALIFORNIA** - Barbara Anderson  
Blake, 704 South Oakland Avenue,  
Pasadena, CA 91106

**PASADENA, CALIFORNIA EVENING GROUP** -  
Maryann Hayward Brockmeyer, 1801  
Oakwood Avenue, Arcadia, CA 91006

**SAN FERNANDO VALLEY, CALIFORNIA** - Jane  
Anne LeGate, 615 North Evergreen Street,  
Burbank, CA 91505 or Krista Davis Pearl,  
4927 Reforma Road, Woodland, CA 91364

**SOUTH BAY, CALIFORNIA** - Sara Laverty  
Fallgren, 6620 Via Siena, Rancho Palos  
Verdes, CA 90275

**SOUTH COAST, CALIFORNIA** - Lois Milliken  
Richardson, 16982 Bedford Lane,  
Huntington Beach, CA 92649

**SOUTH COAST, CALIFORNIA EVENING GROUP** -  
Diane Watters Joslyn, 1200 Westcliff Drive,  
Newport Beach, CA 92660

**SOUTH ORANGE COUNTY, CALIFORNIA** -  
Kathleen Erickson Bridges, 15 Telura,  
Rancho Santa Margarita, CA 92688

**VENTURA COUNTY, CALIFORNIA** - Joan  
Singleton Prestine, 4020 West Hemlock  
Street, Oxnard, CA 93035

**WHITTIER AREA, CALIFORNIA** - Anne Nate  
Walker, 1418 Alta Mesa Drive, Brea,  
CA 92821

## Alpha-Epsilon Province

**ALUMNAE PROVINCE PRESIDENT** - Celaine  
Bartow Derickson, Arizona Alpha, 7156  
North Lemmon Rock Place, Tucson,  
AZ 85718

**CATALINA MOUNTAIN, ARIZONA POCKET** - Ina  
Reed Mapes, 4425 East Palomino Lane,  
Tucson, AZ 85739

**DEL SOL NORTH, CALIFORNIA** - Diane Buehrig  
Schnoebelen, 7958 Calle Posada, Carlsbad,  
CA 92009

**GREEN VALLEY, ARIZONA CARNATION CIRCLE** -  
Alice Wright Coler, 991 W. Vuelta Del  
Yaba, Green Valley, AZ 85614

**HONOLULU, HAWAII** - Victoria Lewis Suyat,  
46-065 Aliipapa Place 1525, Kaneohe,  
HI 96744

**LA JOLLA, CALIFORNIA** - Phyllis Fazzari Speer,  
5978 Karensue Lane, San Diego, CA 92122

**LAS VEGAS, NEVADA** - Kristina Konrath  
Swallow, 600 Rancho Del Norte, North Las  
Vegas, NV 89031

**NORTH SAN DIEGO, CALIFORNIA** - Henrietta  
Byers Bilhom, 18174 Viceroy Drive, San  
Diego, CA 92128

**PALM SPRINGS-DESERT CITIES, CALIFORNIA** -  
Carolyn Zipprodt Long, 114 Mission Hills  
Drive, Rancho Mirage, CA 92270

**PHOENIX, ARIZONA** - Catharine Kunz  
Gianopoulos, 1309 East Secretariat Drive,  
Tempe, AZ 85284

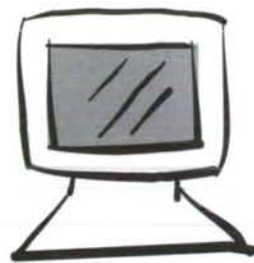
**PRESCOTT, ARIZONA POCKET** - Ann Scheid  
Hein, 4701 North Stageway Lane, Prescott  
Valley, AZ 86314

**RIVERSIDE, CALIFORNIA** - Charlotte Haskell  
Huber, 5492 Argyle Way, Riverside,  
CA 92506

**SAN DIEGO, CALIFORNIA** - Janet Collins Prael,  
9945 Grandview Drive, La Mesa, CA 91941

**SUN LAKES, ARIZONA CARNATION CIRCLE** -  
Phyllis Gilkison Conrey, 26620 South  
Schumaker Drive, Sun Lakes, AZ 85248

**TUCSON, ARIZONA** - Pam Morris Samuels,  
2934 North Placita Nueva, Tucson,  
AZ 85715



# Internet

[www.pibetaphi.org](http://www.pibetaphi.org)

The official Pi Beta Phi web site, launched last fall, is an important tool for spreading information about the Fraternity and its programs to members and non-members. The site allows Pi Phi alumnae and collegians to locate alumnae clubs in their area, to sign up for Directions, to order club or chapter supplies via e-mail, to change their address on-line and to stay in touch with the Fraternity. The web site also spreads information about Pi Beta Phi's heritage and activities to potential members, parents and individuals outside the Greek community.

If you are one of the thousands who has already become familiar with [www.pibetaphi.org](http://www.pibetaphi.org), please continue to check for new additions to the site. If you have not yet visited the site, we encourage you to check out Pi Phi on-line. The News section is a great place to start and to catch up on the latest Fraternity happenings.

#### NEW ITEMS IN THE NEWS SECTION INCLUDE:

- Rush Information Form  
The Rush Information Form is now available on-line.
- Best Rush Skit Contest  
Enter your chapter in the 1998–99 contest for Best Rush Skit or Preference Party and you could win an award at convention!
- Pi Beta Phi Web Site Guidelines  
All collegiate chapters and alumnae clubs that already have a web site or are interested in establishing one, need to refer to the Pi Beta Phi Web Site Guidelines.

#### WHAT'S NEW?

- New Table of Contents Page
- Extension—read about Pi Beta Phi's newest chapter, Indiana Theta at Valparaiso University.
- Publications—read the Spring 1998 feature article, "The ABC's and 123's of Risk Management," from *The ARROW*.
- Plannings—the anniversaries page has been updated to include new information about chapter and club anniversary celebrations.

#### COMING SOON

- E-mail Directory
- Foundation Scholarship Applications

## Amy Burnham Onken

Originally presented in 1935, this award is named for Amy Burnham Onken, Grand President from 1921 to 1952. The award recognizes a senior who demonstrates outstanding participation and leadership skills. Winners are selected based on scholarship, service to the Fraternity and participation in student activities.



**JENNIFER BEYOR**  
New York Alpha  
Syracuse University  
Beta Province



**ANJA BRAU**  
New Jersey Alpha  
Princeton University  
Gamma Province



**JULIA HOLT**  
Pennsylvania Gamma  
Dickinson College  
Delta Province



**CELESTE RASMUSSEN**  
Virginia Theta  
Washington & Lee  
University  
Epsilon Province



**LESLIE BAE**  
North Carolina Gamma  
Wake Forest University  
Eta Province



**NICOLE NABORS**  
Alabama Alpha  
Birmingham-Southern  
College  
Theta Province



**SARAH REINER**  
Florida Delta  
University of Florida  
Iota Province



**MICHELE KRYSZAK**  
Ohio Eta  
Denison University  
Lambda Province



**CYNTHIA DUCKRO**  
Kentucky Beta  
University of Kentucky  
Mu Province



**SHANNON MURPHY**  
Indiana Alpha  
Franklin College  
Xi Province



**JULIE PETTY**  
Illinois Eta  
Millikin University  
Omicron Province



**ELIZABETH THOMAS**  
Louisiana Beta  
Louisiana State University  
Pi Province





**ROBIN LOIGNON**  
Minnesota Alpha  
University of Minnesota  
Rho Province



**REBECCA DERRINGER**  
Kansas Alpha  
University of Kansas  
Sigma Province



**STEPHANIE REINHART**  
Iowa Beta  
Simpson College  
Tau Province



**JENNIFER BAKER**  
Missouri Alpha  
University of Missouri  
Upsilon Province



**RENEE HAMEL**  
Oklahoma Alpha  
University of Oklahoma  
Phi Province



**MARY CURRY**  
Texas Zeta  
Baylor University  
Chi Province



**KATIE THOMPSON**  
Colorado Gamma  
Colorado State University  
Psi Province



**HEATHER HERZOG**  
New Mexico Alpha  
University of New Mexico  
Omega Province



**JOANNE OLEKSZYK**  
Alberta Alpha  
University of Alberta  
Alpha-Beta Province



**JENNIFER REEVES**  
Nevada Alpha  
University of Nevada  
Alpha-Delta Province



**MEGAN FIFER**  
California Beta  
University of California,  
Berkeley  
Alpha-Epsilon Province



**KRISTIN ARMSTRONG**  
California Zeta  
University of California,  
Santa Barbara  
Alpha-Zeta Province



**RAQUEL NIMITZ**  
California Lambda  
University of California,  
Riverside  
Alpha-Eta Province

**NOT PICTURED:**

**MELISSA KAPLAN**  
Connecticut Alpha  
University of Connecticut  
Alpha Province

**KENNA MILLS**  
Virginia Gamma  
College of William & Mary  
Zeta Province

**MANDI KOBASIC**  
Ohio Epsilon  
University of Toledo  
Kappa Province

**KARRIE WEILER**  
Indiana Delta  
Purdue University  
Nu Province

**TIFFANIE NIELSEN**  
Washington Beta  
Washington State  
University  
Alpha-Gamma Province

## Chapter Service

The Chapter Service Award recognizes individuals for outstanding leadership in the chapter, responsibility, dependability, initiative, and contribution to the chapter's spirit and chapter unity. The award has been given since 1956.



**NINA GONSHOLT**  
Ontario Gamma  
University of Guelph  
Beta Province



**ANN PALKER**  
Pennsylvania Zeta  
Washington & Jefferson  
College  
Delta Province



**JILL SIERACKI**  
West Virginia Alpha  
West Virginia University  
Epsilon Province



**LORI BRUNE**  
Virginia Eta  
University of Richmond  
Zeta Province



**GRETCHEN SPANGLER**  
North Carolina Alpha  
University of North  
Carolina  
Eta Province



**CASEY COLE**  
Alabama Beta  
University of Alabama  
Theta Province



**CATHERINE SARNOVSKY**  
Ohio Alpha  
Ohio University  
Lambda I Province



**GINA STACCONI**  
Ohio Theta  
Bowling Green State  
University  
Lambda II Province



**AMBER POOLE**  
Tennessee Beta  
Vanderbilt University  
Mu Province



**STEPHANIE DUNTON**  
Illinois Zeta  
University of Illinois  
Nu Province



**ERIN CHAPEL**  
Indiana Gamma  
Butler University  
Xi Province



**SARA STEVENS**  
Illinois Theta  
Bradley University  
Omicron Province



**MELISSA CARKEET**  
Tennessee Delta  
University of Memphis  
Pi Province



**LISA MUELLER**  
Minnesota Alpha  
University of Minnesota  
Rho Province



**JENNIFER BONGE**  
Nebraska Beta  
University of Nebraska  
Sigma Province



**KARIE HORN**  
Iowa Eta  
Drake University  
Tau Province



**ERIN BREDLOW**  
Arkansas Beta  
University of Arkansas,  
Little Rock  
Upsilon Province



**AMY WEDGEWORTH**  
Texas Epsilon  
University of North Texas  
Phi Province



**KRISTIN SCOTT**  
Texas Zeta  
Baylor University  
Chi Province



**LINDSAY MITCHELL**  
Wyoming Alpha  
University of Wyoming  
Psi Province



**STEFANIE WHITTEN**  
Arizona Alpha  
University of Arizona  
Omega Province



**JODY WALKER**  
Idaho Alpha  
University of Idaho  
Alpha-Gamma Province



**KILEY SIMMONS**  
Oregon Gamma  
Willamette University  
Alpha-Delta Province



**TOSHA ELLISON**  
California Beta  
University of California,  
Berkeley  
Alpha-Epsilon Province



**LAUREN WEINER**  
California Mu  
Pepperdine University  
Alpha-Zeta Province



**MICHELLE VIEIRA**  
California Kappa  
University of California,  
San Diego  
Alpha-Eta Province

**NOT PICTURED:**

**SUE VIVOLO**  
Pennsylvania Iota  
University of Pennsylvania  
Gamma Province

**MELANIE HARRELL**  
Florida Alpha  
Stetson University  
Iota Province

**EMILY CVAR**  
Utah Alpha  
University of Utah  
Alpha-Beta Province

# Collegiate News

**CALIFORNIA ZETA** Courtney Leary was nominated for Greek woman of the year and Gretchen Smalley was nominated for president of the year at the University of California, Santa Barbara's Greek awards ceremony.

The women of **NORTH CAROLINA BETA** at Duke University excelled in community service as well as community endeavors. They raised \$10,000 for the Durham Boys and Girls Club and \$700 for the Durham Rape Crisis Center. Senior Alexandra Winokur received the Mary Duke Biddle Foundation Summer Internship Award for her internship with New York's Sotheby's.

**MISSOURI BETA** Heather Glick was selected for membership in Phi Lambda Psi, a women's Health Honorary at Washington University. She also serves on the university's Panhellenic Executive Council.

**KENTUCKY GAMMAS** at Eastern Kentucky University were rewarded for their academic dedication, as they placed first in overall, sorority grades. Four members were also initiated into Lambda Sigma, a national honor society based on scholarship, leadership and service.

**OHIO ALPHA** members at Ohio University gave several chapter awards based on members' excellence in community service, foreign language knowledge and fraternity spirit.

**TEXAS BETA** Taylor Kepler received Southern Methodist University's most prestigious honor, the M Award. SMU gave Taylor this award based on her dedication and service to the university.

The Panhellenic and Interfraternity Councils at the University of Illinois recognized the **ILLINOIS ZETAS** for their scholarship, internal organization, new membership program and campus involvement. They were also recognized for their outstanding environmental and social awareness.

At the University of Arkansas, **ARKANSAS ALPHA** Ashley Rodgers won three prestigious awards. She was named Outstanding Chapter President and 1998 Outstanding Greek Woman. Ashley also received the Arkansas Alumni Association Senior Citation. The award is given for outstanding achievements in academics, campus involvement, leadership, personal goals and aspirations.

**TEXAS ETAS** Tara Toliver and Lea Anne Heath are officers for their respective classes at Texas A & M. Kelley Wonsmos was named the Fish Camp co-chairman for the Class of 2002. Aggie Fish and Marcie Watson will be planning the university's parents' weekend this April as the event's co-chairman.

**OHIO ZETAS** were named the most outstanding sorority in the area of campus leadership and involvement at Miami University's Greek awards ceremony. Katie Smith won the Outstanding Greek Leader Award, and Jennifer Rifkin was named Greek Woman of the Year.

During Greek Honors night at the University of Missouri, **MISSOURI ALPHA** senior Rachel Cohen was named Outstanding Greek Woman of the Year, while Missouri Alpha as a whole was named the sorority with the best sisterhood.

At Purdue University's annual Greek Honorary Banquet, **INDIANA DELTA** sisters Alicia and Alison Lanham were inducted into Gamma Sigma Alpha honorary fraternity. Order of Omega also inducted Alicia as well as Aimee Burger and Carrie Klockow. For her involvement in Greek and university activities, Cara Jo Dunbar was named Greek Sophomore of the Year. Carrie Klockow also competed against 168 Indiana women and was named one of 33 princesses for The Indianapolis 500 stock car race. Each princess is active in many organizations and has a GPA between 3.4 and 4.0.

During the Greek Awards Banquet at the University of Maine, **MAINE ALPHAS** were named Sorority of the Year due to their commitment to tradition, community service and maintaining a strong sisterhood. The Community Efforts office also recognized Maine Alpha with an Outstanding Effort in Community Service award.

**CALIFORNIA DELTAS** at the University of California, Los Angeles excelled athletically throughout the year. They have athletes on the women's soccer team, the women's swim team and the diving team. Plus, NCAA Champion Meg Spieker plays women's water polo. At California Delta's Inter-Sorority Mother's Club Annual Tea senior Jen Fulford won the Greek Woman of the Year award, and Melissa Northam received the ISMC and Carolyn Engel Memorial Scholarships.

During New Mexico State University's Greek Week, **NEW MEXICO BETAS** placed first in Greek sing and second in Greek games.



Drury College gave its most prestigious Greek award, the Standards of Excellence Award, to the **MISSOURI GAMMA** Chapter. Drury also awarded the Coat of Arms and the Founders Trophy to Missouri Gammas for their outstanding community service. Individuals received awards for excellence in their various academic fields such as finance, Spanish, communication and English.

**IOWA ZETAS** at the University of Iowa showed their philanthropic excellence this year. Not only did they win an award for raising the most money for a hospice near the university, but they also placed first in the sports competition for Pi Kappa Alpha's philanthropy and second in the same category for Phi Gamma Delta's philanthropy.

**ALABAMA BETAS** were inducted into several honor societies at the University of Alabama. The societies included: Omicron Delta Kappa National Honor Society, Blue Key National Honor Society, Anderson Society, Elliot Society and Order of Omega. Casey Cole was named one of the university's top 31 Women of the Year and Rebecca Partesotti was named Junior of the Year. Order of Omega gave the chapter as a whole the Best Alumnae Programming Award.

Community service is a high priority to **KENTUCKY ALPHAS** at the University of Louisville. The chapter was ranked as one of the top three in community service for such projects as the Muscular Dystrophy fund-raising walk through the Louisville Zoo. Tracy Elder led many of the community service drives and, along with Crystal Settles, was named one of the university's top 10 outstanding Greeks.



**TEXAS EPSILONS** achieve excellence as a team and individually at the University of North Texas. The chapter received the intramural Sportsmanship Award, while individuals Blair Burkhardt received the President of the Year award, Aurora Bartzat and Dena Long were nominated for Outstanding Greek Woman of the Year, and Michelle Corbitt received Best Panhellenic Delegate.

Academics are a strong focus for the **OREGON ALPHAS**. Cara Tsoi achieved the highest GPA in the University of Oregon's Greek system, and the 1997 pledge class achieved the highest GPA for a pledge class. Overall, Oregon Alphas won the Edmunson Davis Cup for the highest sorority GPA.

**ILLINOIS IOTAS** excelled at the award reception at Illinois State University's annual Greek Week Banquet. Individual members and the chapter as a whole won eight of the 12 awards presented. Individual awards were: Greek Woman of the Year, Emily Miller; Sister of the Year, Jill Jozwiak; Best GAMMA Representative, Melissa Schmitt; Best Panhellenic Representative, Anne Finn; and Community Service Award, Maureen August. The chapter won Best GAMMA chapter, Best Community Service and the overall Greek Week competition.

Casey Custer of **FLORIDA BETA** is Florida's 1997 NCAA Woman of the Year. Casey achieved all-American status as a Florida State University 4 x 100 meter relay track and field team member. To win the title, Casey excelled in academics, athletics and community leadership. As a chapter, Florida Beta ranked first in Homecoming competitions.



**ABOVE LEFT: Texas Etas at Texas A & M University welcomed Grand President Beth van Maanen Beatty during a recent visit. Not only did Mrs. Beatty speak about the members' accomplishments and awards at a weekly meeting, but a senior luncheon as well as various other activities filled the short visit.**

**ABOVE CENTER: California Lambda members at the University of California, Riverside participated in a 10k walk for Juvenile Diabetes research.**

**ABOVE: Mississippi Betas at the University of Mississippi, along with 3,000 other volunteers, helped build a \$200,000 playground for the Oxford community.**

**OHIO BETA** Eve Ellinger is a well-rounded and accomplished individual. Not only did she win two chapter awards, the Jane Woodward-Brown Spirit Award and the Jodi Lorraine-Patterson Award for her exceptional academics, but Ohio State University also awarded Eve with the Conaway-Chase Outstanding Greek Senior Woman award for her excellence in contributions, honors, achievements and service at Ohio State. The university also gave Eve a membership in SPHINX Senior Honorary, a group of 24 seniors highly dedicated to the institution through service, leadership and scholarship. Eve is now attending law school.

**NEW YORK ALPHA'S** Anne-Marie Anderson was inducted into Order of Omega and elected as its vice president. She also helped to develop and present the Greek Alcohol Summit to Syracuse University's chancellor.

# Collegiate News



**TENNESSEE DELTA** members participated with Delta Sigma Thetas in the annual All Sing/Follies competition at the University of Memphis. The group's theme was Sister Act, and Rebecca Stolarick won the Best Performer Award in the competition.

**VIRGINIA DELTAS** at Old Dominion University had the highest campus GPA. Member Nicole Blackmar received an award for her outstanding campus leadership. The English Department gave Dara Cattani an award for tutoring students, and Cammie Selibovsky was a Communication Honor Society inductee.

University of Wisconsin's Panhellenic Council, Order of Omega and Homecoming committees are just a few of the organizations **WISCONSIN ALPHAS** are involved in throughout the school year. After winning Homecoming Week competitions, Wisconsin Alphas participated in and held several successful philanthropic projects.

**COLORADO GAMMAS** won several awards for grades at Colorado State University's Greek Night Out. The fall new members, initiated members and total chapter GPAs were above the university's all-women's average in each category.

At Knox College, **ILLINOIS BETA-DELTAS** achieved great individual accomplishments. Sarah Lewis was named to the golf Midwest All Conference and is a member of Chi Alpha Omega, a sports honor society. Marisa McShane's research was honored at the Illinois State Academy Science Conference, where she tied for first place in the undergraduate cell and molecular biology division.

Lehigh University's Panhellenic Council recognized **PENNSYLVANIA KAPPAS** for their outstanding membership development. As part of that development, Pennsylvania Kappas give individuals awards for sisterhood, service, most improved GPA, highest GPA and the big sis/little sis team with the highest GPA. Individual, university awards went to Beth Matonak and Christina Eberhart as Scholar Athletes; Allison Merkle, Christina Eberhart, Jennifer Kaiser, Jennifer Elmer and Kathy Veluya as Phi Eta Sigma Honor Society inductees; Taryn Filo for a Varsity Letter in diving; and Tanya Barone as an All Patriot Team member in swimming.

Sponsoring a pancake breakfast was just one way, **ILLINOIS EPSILONS** achieved second place for the most money raised for the Children's Miracle Network Dance Marathon. Kay Watson caught on to the philanthropic spirit and was site leader for an Alternative Spring Break in Washington D.C. Amanda Johnson was honored with the presidency of Northwestern University's Arts and Organizations, while University Police gave Lauren Wolfson an award for her help in arresting a man who had assaulted several students on campus.

**MISSISSIPPI ALPHAS** placed first overall in Greek Week at the University of Southern Mississippi. Leigh Herrington won Outstanding Greek Woman while Nicole Judice won Best Panhellenic Delegate.

Scholarship recipients and university sports team members are just a few of the outstanding **CALIFORNIA THETAS** at the University of California, Davis. Cady Norene is an ASUCD senator and Lauren Taylor is Greek Woman of the Year. The chapter as a whole achieved top honors in grades, too.

**WYOMING ALPHAS** placed first in several Greek-wide events at the University of Wyoming. The chapter won first place in the following categories: philanthropic/community service, overall athletics, GAMMA and overall Greek Week. Briana Teets was named Overall Female Greek Athlete, while Ashley Sprecher was first in Individual Community Service.

At Birmingham-Southern College, **ALABAMA ALPHAS** were named the scholastically most improved chapter on campus. Nicole Nabors was nominated for the Margaret Dunn Phillips Panhellenic Award as well.

Two **TEXAS DELTAS**, Tara Watson and Staci Outhouse will represent Dallas as they compete to be Miss Texas for the Miss America and the Miss USA pageants, respectively. Sarah Burleson, Jill Petersen, Alison Indergard and Catherine Collins will assist incoming Texas Christian University freshmen this fall, Sarah as an Orientation Student Assistant and Jill, Alison and Catherine as Frog Camp Facilitators.



At Wake Forest University, **NORTH CAROLINA GAMMAS** placed second in Greek Week, raised money for Arrowmont and organized a booth for Special Olympics.

**OREGON BETAS** at Oregon State University were given the Community Outreach Award for their chapter programs Invite a Professor for Dinner and Dispelling the Myth. Dispelling the Myth is a campus program about the dangers of alcohol and date rape.

Not only did **OHIO EPSILONS** tie for first in academics, win the Panhellenic Chapter Excellence Award and win the University of Toledo's Songfest, but individuals achieved high goals as well. Four women were Mortar Board inductees, two women were Blue Key National Honor Society inductees and four university golf team members won the first ever Division 1 Mac Golf Championship. To top out the year, Mandi Kobasic was named Greek Woman of the Year.

At Creighton University, **NEBRASKA GAMMAS** dominated the annual Order of Omega Greek Awards. They placed first in scholarship, community involvement, new member education, chapter awards and first overall. Individual members also excelled in various academic areas. Michelle Gerken received the Creighton University Family Medical Scholarship. The New York Zeta Undergraduate Scholarship went to Dawn Imada. Jackie Behles, Missy Schultz, Kristen Kolesar and Erin Kouri were four of 12 Clare Booth Luce Scholarship for Women in Science recipients.



**MICHIGAN ALPHA** Meaghan Heater was named the Outstanding Psychology Student of the Year, and accepted the Vice Presidency of Psi Chi, a Psychology Honorary. Omicron Delta Kappa inducted Michelle Anderson, Nicole Khoury and Julie Mitchell.

Once again **INDIANA ZETAS** were the Greek women's Intramural Champions at Ball State University.

Ashleigh Davis and Jenny Abramson were initiated into Phi Beta Kappa at Stanford University. Another **CALIFORNIA ALPHA**, Lila Musser, received a Fulbright Scholarship. Kristine Penner was one of five individuals in the nation to receive the Howard B. Swearer Humanitarian Award, which recognizes community service and outstanding academics.

Bronson Hospital Oncology awarded **MICHIGAN EPSILONS** for their outstanding volunteer work this past year. Within the chapter, Jenn Diepenhorst achieved the highest GPA and Michelle Carte was named AAC's most Outstanding Senior. At Western Michigan University's Greek Awards, Myka Beach was named the Most Outstanding Michigan Epsilon member and the chapter received the Standards of Excellence Award for outstanding membership recruitment.

**MINNESOTA ALPHAS** Sarah Stauffer and Lisa Mueller were recognized for their dedication to their chapter and community at the University of Minnesota. Sally received the Diane Hart Service Award at Founders' Day and Lisa was named the Outstanding Senior for both the chapter and Rho Province.



**ABOVE LEFT:** At Florida State University, Florida Betas gave an Easter party for a needy Tallahassee family. After learning the eight children did not have a place for clothes, members decorated boxes for the children's clothing. They also helped the family dye eggs, and took them to buy clothes and shoes as well as Easter outfits.

**ABOVE CENTER:** Cans Around the Oval was the theme for Colorado State University and the city of Ft. Collins recycling contest. With enthusiasm and dedication, Colorado Gammas placed third in this event. They also placed second in the university's intramural competition. Colorado Gamma's House Corporation gave scholarships to Melissa Young and Kristin Lohman. Melissa also received a scholarship from the Denver Alumnae Club.

**ABOVE:** The women of West Virginia Alpha at West Virginia University followed the tradition of Pi Phi firsts when they placed first in Pi Kappa Phi, Delta Chi and Phi Delta Theta's philanthropies as well as first place in Greek Week.

Greek Weekend at the University of Connecticut was fun and fulfilling for the **CONNECTICUT ALPHAS**. During the weekend, chapter members raised the most money for the Special Olympics and won the Spirit Award. Erika Bates was also named Greek Goddess. Apart from the weekend, Connecticut Alpha is home to three Rho Chis this year.

# Collegiate News

Twelve **VIRGINIA GAMMAS** at the College of William & Mary studied around the world in places ranging from Europe to Israel, while at home, 14 women made the Dean's List.

Greek Sing at the University of New Mexico would not have been the same without the **NEW MEXICO ALPHAS**. Paired with the Lambda Chi Alphas, they won the small group mix. In the large group mix category, New Mexico Alphas and Sigma Alpha Epsilons received second place. At the closing Greek Week Banquet, they received most improved GPA, the Karen Abrams Campus Involvement Award and, for the third year in a row, the Philanthropic Award.

**TENNESSEE BETA** Amy Worden received a 3.94 while playing Lacrosse at Vanderbilt University. Thirty-four members are on the Dean's list.



**MONTANA ALPHA** members at Montana State University ended their school year on a high scholastic note. The members achieved the highest sorority GPA on their campus. Senior Dana Forsman also was named 1998 Woman of Achievement for her outstanding GPA, leadership and service.

**FLORIDA DELTAS** hold several leadership positions across campus. Danielle Damato was selected as University of Florida's Panhellenic Council's executive vice president. Kathy Carmichael will be a liaison between students, administration and alumni as a Florida Cicerone member. Shana O'Kane was elected to a cabinet position in the Blue Key Honorary, and Stephanie Linton placed fourth in the Miss University of Florida pageant.

At the University of Texas' Greek Week Awards Banquet, **TEXAS ALPHAS** were recognized for their great sportsmanship. The chapter gave internal awards to members at both its scholarship dinner and Founders' Day celebration. To congratulate the seniors, Texas Alphas held a Senior Week with fun activities for the whole chapter, and finished the year with a chapter cook-out.

**SOUTH DAKOTA ALPHAS** brought home the first place plaque and the Best Director Award at the University of South Dakota's Mortar Board sponsored, annual choral competition, Swingout. The chapter also received five of the seven awards given for Greek Week. These awards were Outstanding New Member Education and Retention, Outstanding Risk Management, Excellence in Greek Leadership, Outstanding Contribution to Philanthropies and Overall Outstanding Chapter. Sophomore April Ross was named Outstanding New Member, and Jacalynn Hofstetzer was named Outstanding Greek Woman. In other award ceremonies, member Jamie Sage was recognized as the individual who collected the most money for the Children's Miracle Network Dance Marathon, and Heather Carpenter tied for the highest GPA on campus.

**GEORGIA ALPHA** Heather Layfield, a landscape architect student at the University of Georgia, received a scholarship from the American Society of Landscape Architects. The Rotary Club chose Georgia Wood as one of five students in the state to study at the University of Oslo in Norway. For her leadership in both campus and Greek activities, Heather Quinn was named Greek Woman of the Week. The chapter also hosted their annual mother/daughter day brunch and first ever alumnae tea.

Between volunteering and studying, **VIRGINIA ZETAS** kept busy this year. The members' involvement with a Red Cross blood drive and various other philanthropic activities lead to Virginia Zetas winning the Philanthropy Award at the Annual Greek Awards. Approximately 25% of the chapter was initiated into various academic honor societies at Virginia Polytechnic Institute and State University as well.

**FLORIDA ALPHAS** at Stetson University received several awards for their academic excellence. Elizabeth Maresca earned the highest Greek, junior GPA. Glennys Ortega won the English Honor Award and the Outstanding Senior English Award. Lori Ann Francis won the AKA Pearl of Excellence Plaque for outstanding service. The Master Family Trust Accounting Award was given to Jennifer Townsend. Psi Chi initiated Kristen Thompson as did Alpha Kappa Delta. Kimala Barclay was elected Alpha Kappa Delta president and was named the sociology department's Outstanding Junior. Courtney Parnell is a new Mortar Board member.





**OHIO THETA** members at Bowling Green State University are proud of Kathryn Fortlage, who, through her academic and leadership excellence, is an Order of Omega initiate, Golden Key member, Phi Upsilon Omicron member and Omicron Delta Kappa member.

The **VIRGINIA THETA** Chapter at Washington & Lee University celebrated its sixth anniversary on April 25. The chapter led the way on campus through several leadership positions, an outstanding GPA, a successful Holiday Angel Tree in partnership with Wal-Mart, an incredible rush and shining performances in theater and the arts.

**TENNESSEE DELTAS** received many awards at the University of Memphis' annual Order of Omega Banquet. The awards and recipients were: Intramural Woman of the Year, Erin Dickson; the Centennial Award, Jennifer Wilson; Chapter President of the Year, Melissa Carkeet; the Campus Leadership Award, Kate Rose; Emerging Leader of the Year and the Samuel T. Boswell Award, Katie Schwie. The chapter as a whole won intramural sorority softball.

**KENTUCKY BETA** members not only won first place in three fraternity philanthropies, but they also won several awards during the Inter-Greek Programming Assembly Awards Banquet at the University of Kentucky. The chapter won Level of Achievement in recruitment and retention and Levels of Excellence in chapter house management, membership education, organizational management and international relations. Five seniors received an Academic Excellence Award. Melissa Miller received the Friendship Fund Undergraduate Scholarship, and Joann Hollen was runner-up for Homecoming Queen.

This is the third year the **OKLAHOMA BETAS** have won the all-university intramural sports championship. Many individual members were recognized for achievements as well. Amy Puckett is Oklahoma State University's Student Government Association Vice President, and Shannon Lambert is serving as Panhellenic Co-Rush Chairman. Shannon Cloyes was named the year's Outstanding Greek Sophomore, while Carrie Combs was named Outstanding Greek Sportswoman. The Oklahoma State Panhellenic Council also recognized the chapter for the best new member programming on campus.

## Collegiate Topics and Deadlines

The *ARROW* editor designates a collegiate topic for each issue. Pi Phi is interested in how your chapter plans for or reacts to such topics.

The following are deadlines and topics selected for the 1998-99 academic year.

- October 1, 1998 (Winter 1998)—Panhellenic Activities  
How is your chapter involved with other Panhellenic groups on your campus? Share news about interesting programs your chapter is involved in with other Panhellenic groups.
- December 1, 1998 (Spring 1999)—Community Service  
How does your chapter help the community in your area? What are your major philanthropic projects?
- April 1, 1999 (Summer 1999)—Chapter and Alumnae Activities  
How is your chapter involved with local Pi Beta Phi alumnae and alumnae clubs? Has your chapter developed any interesting or creative activities to get chapter members and alumnae more acquainted?
- June 1, 1999 (Fall 1999)—Accomplishments  
What outstanding achievements did your chapter or an individual in your chapter receive this academic year?

# Links to Literacy

## What really "links" us to literacy?

Is it the pages of a glossy new Dr. Seuss book? Is it the intrigue of an adventure novel? Or is it the giddy smile of a new reader and his tutor after the pupil has read his first sentence?

As Pi Phi, we share the new book, delve into the intrigue and glow with excitement as we help link others to literacy. Through literacy, we also link with other humans to enhance not only their lives, but also our own by expanding our learning limits.

Throughout this year Pi Phis across the country have participated in Links to Literacy in a variety of ways. Members have creatively heightened the community's awareness about literacy.

**ILLINOIS EPSILONS** at Northwestern University held a spaghetti dinner to raise money for literacy kits. They donated the kits to Aunt Martha's Youth Service in the Chicago area. Members also tutored and developed a writing contest for Haven Middle School in Evanston, Illinois, and helped the Evanston Women's Club host a story-telling centered Halloween party for local children.



**The Maryland-D.C. Suburban Alumnae Club** sponsored a book wrapping service at a local bookstore. The club set up an easel to describe Links to Literacy and Pi Phi's philanthropic mission.

The **CATALINA MOUNTAIN POCKET** has adopted students in the Oracle, Arizona School District. The group donates a large assortment of new children's books to first graders as part of the district's Learning Corner Project.

**CONNECTICUT ALPHAS** held a campus-wide book donation at the University of Connecticut.

**OHIO THETAS** at Bowling Green State University corresponded with first grade students via letters stressing the importance of reading and the benefits learning to read can provide. Chapter members also volunteered in another classroom, where they assisted the teacher and hosted an end-of-the-year luncheon for the students at their chapter house.



## Links to Literacy Writing Contest

In keeping with the Pi Phi tradition of service, education and recognizing talent within its membership, all Pi Phis are encouraged to participate in the Third Annual Pi Beta Phi Links to Literacy Writing Contest.

All Pi Beta Phi alumnae and collegians are invited to submit an original piece of writing not longer than 350 words answering the following question: What has your involvement in Links to Literacy taught you?

Submissions may include poems, essays, short stories or any genre of the author's choosing. Criteria will include a unique approach to the topic, effective use of the genre selected and quality of writing. Alumnae and collegiate submissions will be judged separately.

One winner and one honorable mention from both alumnae and collegiate submissions will be chosen. The alumnae and collegiate winning submissions will be published in the Spring 1999 issue of *The ARROW*. All entries will be available for Pi Phi use for educational purposes.

Submit your entries by November 30, 1998 to Links to Literacy Chairman Jean Egmon, 1625 Sheridan Road #212, Wilmetter, IL 60091, E-mail [egmon@nwu.edu](mailto:egmon@nwu.edu).

Your submission must include your name, address, phone number, alumnae/collegiate status and chapter or alumnae club name, if applicable.

## Links to Literacy Questions & Answers

- Q:** What is Links to Literacy Week?  
**A:** Links to Literacy Week is the time set aside each year when all Pi Beta Phi members promote literacy through service in their communities, on their campuses and throughout the Fraternity.
- Q:** When was Links to Literacy Week established?  
**A:** Links to Literacy Week was established in 1994.
- Q:** Why was Links to Literacy Week established?  
**A:** Links to Literacy Week was established so that alumnae and collegians could share a time to promote Links to Literacy.
- Q:** When is Links to Literacy Week?  
**A:** Links to Literacy Week is the second full week in October. This year, Links to Literacy Week is October 11-17.
- Q:** What are some guiding principles for Links to Literacy Week and for Links in general?  
**A:** There are as many activities you can do for Links to Literacy as there are Pi Phis. Three key principles to keep in mind when planning your activities for Links to Literacy are:

- 1. Service**—The purpose of Links to Literacy is service. Its success is measured in volunteer hours, not in donations made or money raised.
- 2. Full Participation**—Try to get as many of your members participating in Links to Literacy, especially during Links to Literacy Week.
- 3. Awareness**—Through Links to Literacy Pi Phis and the community should be more aware of the need for literacy.

- Q:** What are some ideas for Links to Literacy Week activities?  
**A:** Consult *Links to Literacy: A Pi Beta Phi Programming Guide* for Links to Literacy activity ideas. It contains ideas for everything from model programs to motivation to publicity and awards. There are ideas and processes in the Links guide that can help you with other sorts of programming as well. If you do not have a copy, please obtain one by calling Pi Beta Phi Central Office.

### Ideas

Here are some other ideas that have been submitted by Pi Beta Phi chapters, clubs, individuals and members of the Fraternity's Links to Literacy Committee. As a pair, a chapter and club could:

- 1.** Kick off a year-long, joint Links to Literacy project.
- 2.** Sponsor a literacy speaker for the campus and community.
- 3.** Build and staff a library in a local hospital.

- 4.** Read together and/or perform a story in the classroom of a local alumna who teaches school.
- 5.** Have dinner together and invite a literacy speaker, or conduct a literacy activity.
- 6.** Conduct a reading hour at a local library.
- 7.** Conduct a writing contest with a local bookstore.
- 8.** Invite a speaker from the organization with whom you conduct literacy service to a chapter or club meeting to speak about the difference you make to literacy and the ways you can expand your service.

- Q:** What if for some reason we are not holding a meeting during Links to Literacy Week?  
**A:** Make everyone aware of the week's date and purpose. Then encourage people to observe and promote literacy on their own in a special way and bring back stories of what they did to the next club or chapter meeting. Conduct your Links to Literacy Week event at the next possible meeting.

### Other Links to Literacy Hints

Submit a program evaluation form for each Links to Literacy activity you hold. Include materials from the program and a contact person's name and number.

Encourage participation in the Links to Literacy Writing Contest.

Elect a special Links to Literacy officer and/or interest group.



# Directions

Where friendships grow

*Pi Beta Phi's Mentoring & Networking Program*

## Directions Success

I got involved in the Directions program because I like to help people, and I was provided a lot of help from family and friends during my initial search for a job. Everyone needs a "foot in the door" and I'd like to help push the door open a little and help out. I feel that it would be a shame not to share my experience with women who are in the career search process I was once in. Especially when it comes to the field of advertising. I only wish I had someone to share their experiences with me. I think it's important to convey that having the help and guidance of those in your field of expertise can really help to guide you to the appropriate contacts. It is a big world out there, and many people are vying for the same job—you need a little edge and Directions can help you get that.

DIANE DELUCA LOBIONDO  
NEW YORK ALPHA  
GARDEN CITY, NEW YORK

I graduated in 1996 from Marquette University with a degree in Business, but didn't have much of an idea of the kind of career I wanted to pursue. I contacted the Directions program to expand the networking I was

doing through my university, friends and family. The Pi Phi alumnae who responded to my letter were, by far, the most helpful of all my contacts. Not only did I receive leads for jobs, but invaluable advice from women who had the successful career I was seeking. One of my Pi Phi's leads was fruitful and landed me an entry level position in a pharmaceutical firm. Since then I've been promoted and moved to New York City as a pharmaceutical sales representative! Coincidentally, I contacted the Directions program again when I moved to New York to meet some new people—it worked well for that, too! This is my second year with the company, and I am as thrilled with my career as the day I started my job. I truly love what I do! I would have never considered this field, but because the Pi Phi alumnae took the time to get to know me, they saw the potential for a perfect match before I recognized my own interest was there!

Thank you for providing us with this program which is such an invaluable resource. Thank you to the many alumnae for participating and offering your time to sisters like me—you've made such a difference!

JENNIFER TRENN  
WISCONSIN DELTA  
FOREST HILLS, NEW YORK

## We Want to Print Your Story

If you have given or received support through Directions, Pi Phi's mentoring and networking program, please share your success story with our readers. All you need to do is answer these questions:

1. Why did you get involved with the Directions Program?
2. How has Directions helped you find a place in your community or career?
3. How have you been able to help others through the Directions program?
4. How has your Directions mentoring relationship helped to improve your life?
5. How can Pi Beta Phi encourage participation in the Directions program?
6. What is the most helpful aspect of Directions?

Please send information to  
The ARROW, 7730 Carondelet,  
Suite 333, St. Louis, MO 63105

# Directions

Where friendships grow

*Pi Beta Phi's Mentoring & Networking Program*

Name: \_\_\_\_\_ Maiden Name: \_\_\_\_\_

Home Address: \_\_\_\_\_

City/State/Zip: \_\_\_\_\_

Phone: (home) \_\_\_\_\_ (work) \_\_\_\_\_

Fax: \_\_\_\_\_ e-mail: \_\_\_\_\_

Chapter: \_\_\_\_\_ Year of Initiation: \_\_\_\_\_

Check One and complete information below:

\_\_\_\_\_ I would like to help other Pi Phis. Please add my name, mentoring information and career cluster (if appropriate) to the program. I understand that this information may be released to any Pi Phi who requests the information.

\_\_\_\_\_ Help! I am entering or re-entering the job market, and/or moving to a new community. I would like some mentoring information from Pi Phi alumnae. Enclosed is my **\$5.00 check payable to Pi Beta Phi** for which I may request up to three locations.

CHECK APPROPRIATE MENTORING CATEGORY:

Career

City/Community Information

*(If career, complete occupational cluster information below.)*

City: \_\_\_\_\_ Closest metropolitan area: \_\_\_\_\_

Occupation Cluster(s): \_\_\_\_\_ (See listing below)

Occupation Title/Description: \_\_\_\_\_

OCCUPATION CLUSTERS

- |   |   |
|---|---|
| <b>A. Agriculture &amp; Environment</b><br>Conservation, Forestry, Horticulture, Landscaping, Recycling, Wildlife   | <b>J. Health &amp; Medicine</b><br>Dentistry, Nursing, Pharmacy, Physician, Psychology, Therapists, Veterinary, Dietitian, Optometry, Pathology, Dermatology, Sales, Consultant |
| <b>B. Architecture, Engineering &amp; Design</b><br>Drafting, Graphic and Interior Design, Surveyor, All Engineers, Architect                               | <b>K. Home Economics &amp; Family Consumer Science</b><br>Child and Daycare Service, Family Counseling, Food Marketing and Development, Homemaker                               |
| <b>C. Communications</b><br>Advertising, Broadcasting, Journalism, Media, Public Relations, Publishing, Reporting, Writing                                  | <b>L. Hospitality</b><br>Catering, Chef, Conventions, Food Services, Hotel, Restaurant  |
| <b>D. Computer &amp; Science</b><br>All Computer/Technical Support, Data Processing, All Scientists   | <b>M. Legal &amp; Law Enforcement</b><br>Attorney, Court Reporting, Judicial, Paralegal, Police   |
| <b>E. Construction &amp; Trades</b><br>Automotive, Electrical, Mechanical, Painting, Plumbing, Textile  | <b>N. Management &amp; Administration</b><br>Administrative Support, Clerical, Human Resources, Personnel, Public Relations, Company President                                  |
| <b>F. Cultural &amp; Arts</b><br>Crafts, Entertainment, Film, Museums, Music, Performing, Photography, Theater, Actress                                     | <b>O. Manufacturing</b><br>Equipment Maintenance, Factory Operation, Plant Management   |
| <b>G. Education &amp; Counseling</b><br>All Levels of Education, Employment Services, Librarian, Social Work, Administration, Counselor                     | <b>P. Recreation, Leisure &amp; Travel</b><br>Airlines, Fitness Sports, Tourism, Public Relations   |
| <b>H. Finance</b><br>Accounting, Banking, Consulting, Economist, Investments, Math, Statistics, Auditor   | <b>Q. Retail</b><br>Consumer, Design, Fashion, Merchandising, Manager   |
| <b>I. Government, Non-profit &amp; Religion</b><br>Military, Ministry, Public & Social Services, Volunteer, FBI, Legislative Aide, Fund-Raising, Translator | <b>R. Sales &amp; Marketing</b><br>Buyer, Import/Export, Insurance, Real Estate, Representative, Research, Wholesale, Telemarketing, Marketing, Manager, Sales                  |
|   | <b>S. Transportation &amp; Moving</b><br>Shipping & Freight, Trucking   |

Return to: Directions Program

Pi Beta Phi Central Office, 7730 Carondelet, Suite 333, St. Louis, MO 63105

# In Memoriam

## Alabama Alpha

OLIVE MOSES SWENSON, 1935; April 1998  
MELINDA KERR WILSON, 1961; January 1998

## Alberta Alpha

MARY ELEANORE GRIFFITH TWEDDLE, 1931;  
May 1998

## Arizona Alpha

JEANNE DURAND KYLEIGH, 1950; May 1998  
FRANCES RAYBURN ROHRER, 1931;  
March 1998  
DORIS CREPIN SUMAN, 1921; March 1998

## Arkansas Alpha

MARJORIE JONES CROSSON, 1925;  
February 1998  
ELIZABETH OGLESBY GREISSER, 1940;  
November 1997  
MARILOU SMITH MOBLEY, 1938; April 1998  
MARY BETH TERRY POWELL, 1926;  
January 1998  
RUTH MOORE MALONE VAUGHAN, 1960;  
June 1998

## California Beta

FRANCES SEYMOUR HOLMES, 1923; April 1998  
BEVERLY BIRBECK PARK, 1947; June 1998

## California Gamma

CAROLYN J. AYARS, 1927; April 1998  
DOROTHY WHEELER PRICE, 1934; March 1998

## California Zeta

LYNN PENDLETON DUNDAS, 1962; May 1998

## Colorado Alpha

CAROL NEWMAN BALL, 1943; November 1997  
MARGARET PLETTNER COUNTER, 1931;  
May 1998

## Colorado Beta

JEAN VANDEMOER BOYD, 1934; June 1998  
MARIE KACKSTETTER DAVIDSON, 1933;  
March 1998  
BETTY BUELL KENNEDY, 1939; May 1998  
MARJORY WALKER NEWBY, 1939; May 1998

## Florida Beta

JANE LLOYD TELFRIN, 1941; November 1997

## Idaho Alpha

FERN CRANSTON ANDERSON, 1923; April 1998  
GWEN WEBER COCHRANE, 1971; February  
1998  
JEAN CLEVELAND STUART, 1937; May 1998

## Illinois Delta

AILEEN SNIVELY EKMAN, 1921; May 1998

## Illinois Epsilon

CHARLOTTE BEILFUSS WHITTINGTON, 1935;  
March 1998

## Illinois Zeta

MARTHA BROWN PAYTON, 1925; April 1998

## Illinois Eta

DOROTHY MCGAUGHEY MYNARD, 1929;  
April 1998

## Illinois Theta

PATRICIA JACQUIN MOYLAN, 1948;  
August 1997

## Indiana Beta

CHAR KINCAID ANTCLIFF, 1952; May 1998  
JEANNE HAYES CAMPBELL, 1941;  
February 1998  
BETTY MCCORMICK MICHAEL, 1939;  
February 1998

## Indiana Delta

MARY HUNT CULVER, 1938; November 1997  
ANN THOMPSON GILARDI, 1964; May 1998

## Indiana Epsilon

GAIL WAGNER BUTLER, 1948; May 1998

## Indiana Zeta

JANICE H. HATTENDORF, 1957; February 1998

## Iowa Alpha

AMY SKINNER BASARAB, 1942; January 1998  
EMMA LOUISE FRICKE, 1935; June 1998

## Iowa Beta

DOROTHY HEATON KNAPPE, 1931;  
October 1997

## Iowa Zeta

VIRGINIA KAYE LABLONDE, 1931; April 1998  
MARGARET GRAHAM LEWIS, 1924; June 1997  
MARGARET MILLER STOUTNER, 1932;  
April 1998  
GWENDOLYN VINSON WEIDEMANN, 1925;  
April 1998

## Kansas Alpha

ELIZABETH HECOX, 1931; April 1998  
CAROLINE BRINK VAN CLEAVE, 1934;  
June 1998

## Kansas Beta

VIRGINIA CARNEY CURRIE, 1923;  
February 1998  
FRANCES GIBSON, 1927; January 1998  
KATHERINE HOSMER MCCORMICK, 1944;  
April 1998

## Kentucky Alpha

MILDRED SCHEIRICH MAY ATKINS, 1925;  
June 1998  
DOROTHY ALTHAUS LOTSPEICH, 1936;  
April 1998

Initiation year and month and year of death follow each member's name. When submitting death notices to Central Office, please give month and year of death. Names cannot be listed without this information.

# In Memoriam

## Louisiana Alpha

LIDA SMITH HANSON, 1954 affiliated Missouri Beta; April 1998

## Maryland Alpha

JULIA COE, 1920; May 1998

## Massachusetts Alpha

CONSTANCE REUTER SCHWARTZ, 1934; June 1998  
PHYLLIS GLAZIER STEELE, 1927; August 1997

## Michigan Alpha

RUTH SOULE WALLEY, 1931; March 1998

## Michigan Beta

MARIAN GIDDINGS WITWER, 1931; May 1998

## Minnesota Alpha

BETTY PALMER HANSON, 1935; February 1998

## Missouri Alpha

MARGARET OWEN HINTON, 1923; March 1998  
MARIAN LIEBERMAN NELSON, 1933; May 1998  
MARGARET WATERS NEWLIN, 1935; February 1998

## Missouri Beta

MARTHA SUBLETTE BIRK, 1929; April 1998

## Nebraska Beta

MARGARET AMES ROEHL, 1927; June 1998

## New York Alpha

BARBARA SMITH DEAN, 1937; May 1998  
GLORIA CRAINE DICKINSON, 1942; March 1998

## North Carolina Alpha

ELOISE BROUGHTON WHYTE, 1937; March 1998

## North Carolina Beta

BABBETTE BAKER SMITH, 1938; May 1998

## Ohio Alpha

MAXINE WEINRICH NELSON, 1927; June 1998  
ELIZABETH GAILEY VINCENT SKOU, 1939; May 1998

## Ohio Beta

FRANCES JOHNSTON BURKHALTER, 1922; May 1998  
HELEN TRACY HUBER, 1916; April 1998  
MARY JEAN ROSE LINDQUIST, 1940; July 1997  
MARY GOLD MOORE, 1934; April 1998

## Ohio Delta

ANNE FULLER BOYD, 1944; December 1997  
JOAN MANSUR HOELSHER, 1939 affiliated Ohio Beta; March 1998

## Oklahoma Alpha

KATHERINE WEEKS BRIDEWELL, 1930; May 1998

## Oklahoma Beta

JERRY HICKS CUNNINGHAM, 1959; April 1998  
GERALDINE YERGLER HOOVER, 1942; February 1998  
CORABELL CORBIN MCKEE, 1931; January 1998  
JANE MCCOLLUM PAYNE, 1949; May 1998  
CHARLENE ALLEN SKAER, 1934; June 1998

## Ontario Alpha

BETTY HARA WILSON, 1932; February 1998

## Oregon Alpha

BONITA TICHENOR CHAPMAN, 1928; April 1998

## Oregon Beta

KAREN THOMPSON GREENWOOD, 1958; May 1998  
DOROTHY KEZAR PRITCHETT, 1926; May 1998

## South Dakota Alpha

PHYLLIS ULLYOT HUNT, 1946; December 1997  
JEAN JORSTAD MCHUGH, 1943; July 1997  
JANE STEWART TICE, 1936; June 1998

## Tennessee Alpha

ELIZABETH ROWDEN LLEWELLYN, 1930; April 1998

## Texas Alpha

ISABEL CAMP JACKSON, 1919; December 1997  
CORAL YOUNG MICHAELIS, 1926; September 1997  
RUTH HILL SKELLEY, 1941; March 1998

## Texas Beta

MARGARET LYONS IRBY, 1945 affiliated Louisiana Alpha; January 1998  
KATHRINE "BUNNY" RAGSDALE, 1947 affiliated Texas Alpha; March 1998

## Utah Alpha

BARBARA BOONSTRA HOLMES, 1948; January 1998

## Vermont Beta

OLIVE FIELDS HOUGH, 1929; October 1997  
PHYLLIS SAVAGE JOHNSON, 1940; April 1998

## Virginia Alpha

MARY SUE COWLES SHOUP, 1956 affiliated Louisiana Alpha; May 1998

## Washington Alpha

KAYLEEN SANDTNER HAASL, 1954; March 1998  
VIRGINIA CRUSE SPONBERG, 1934; February 1998

## Washington Gamma

MARY ELLEN "MIMI" HOWELL MCELROY, 1949; May 1998

# From I.C. Sorosis to Pi Beta Phi



The I.C. Sorosis was organized at Monmouth, Illinois, in April, 1867, making it the oldest of women's college secret societies. It was the result of a need for cooperation on the part of young women then attending that co-educational institution. The history of co-education in our land gives emphasis to this need, for the paths of young women attending co-educational colleges twenty-five years ago were thorny with ridicule, sarcasm and often with insult; but these pioneers in co-education were sustained by the very ambition and indomitable will that from that day to this have enabled women to gain the foothold they must have in order to carry forward the education of the world as they alone can carry it forward—to the point where the education of intellect goes hand in hand with that of manhood and womanhood.

To these women at Monmouth the strength of united effort suggested organization and the I.C. Sorosis was organized for defense, cooperation, education; and the product of that time has proved so helpful to all times that the fraternity system is now made up, not of chapters for one time or place and with limited membership, but of great national organizations with chapters throughout the land.

As a name for such an organization Fraternity is the only word in our language which expresses the idea embodied. The word is without sex and is most fittingly applied to all Greek-letter college organizations be the membership men or women. It was a grave mistake to have named our organization Sorosis as the word has no signification in itself save that of a heap or crowd. The women's fraternities of later organization profited by our mistake and with commendable foresight adopted the name Fraternity, at once identifying themselves with the Greek-letter movement. This step gave them every advantage since to be a part of the Greek-letter fraternity system was what college people wanted.

I.C. Sorosis, though the oldest lost much time and wasted much effort in attempting to carry the burden of an English name among the Greeks in spite of the fact that its organization was identical from the beginning with that of the men's fraternities.

Tradition tells us the grip of I.C. was always expressed in the Greek words Pi Beta Phi, but that these words were kept secret.

Even now they are the sacred words of our fraternity around which cluster all the beauty and sweetness of our fraternity life.

However true the tradition may be, sure it is the need of a Greek name became so patent to the chapter which published the first issue of *The ARROW* that without legislation and unadvised, the editor ventured to make the title page read, "I.C. Sorosis of Pi Beta Phi," a meaningless jingle, but it caused a revolution, the outcome of which was a Greek name. That (a) I.C. was not a fraternity, but Sorosis; (b) I.C. was not Greek but English, were the two most effective arguments used by rival organizations and which proved insurmountable stumbling blocks to membership and to outsiders. The name I.C. Sorosis did not index the character of the organization.

Meanwhile the active membership became more and more restless under the needless burden of an objectionable name and the movement grew rapidly to make the organization in name what it always had been in fact—a member of the college Greek-letter world,—hence the name Pi Beta Phi was substituted for I.C. in 1888 and Fraternity for Sorosis in 1892. Pi Beta Phi Fraternity thus became the official title of the organization, a name in every way expressive of its ideas and work.

Grand President  
Emma Harper Turner  
September 1892



# Fraternity

## News & Notes

### An Update on North Dakota Alpha

In the spring of 1997, the North Dakota Alpha Chapter at the University of North Dakota was devastated by the flood that hit the Greater Grand Forks area. Water filled the basement of the chapter house and the contaminated water crept into the carpet on the main floor of the house. The kitchen, too, was destroyed, so chapter members shared meals at the Alpha Chi Omega house.

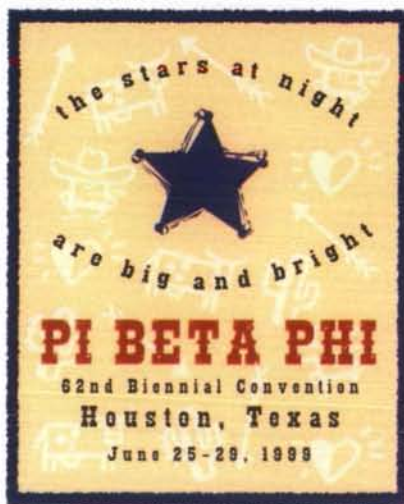
A year ago, the basement was remodeled and the chapter celebrated their unity with a successful bid day and a chapter-wide house retreat. This year, sod and a few bushes were replaced in the lawn. Library furniture that was ruined through soaking up much of the flood water, was removed from the basement and replaced. This summer, curtains were also added to the kitchen, dining room, laundry room and library windows.

North Dakota Alpha's House Corporation placed the needs of the chapter ahead of their own needs and worked very hard to be sure the house would be habitable again. Chapter members have remained strong, and supportive of each other and of the hard work their House Corporation has done throughout this period of adjustment.

### 1998 Fraternity Ornament



The newest Pi Beta Phi Greek Letter Ornament is now available. Kansas Alpha Christy Wohltman Goessling designed the ornament to commemorate Pi Beta Phi's adoption of its Greek letters from the original name, I.C. Sorosis. The attractively gift boxed ornament is sold through Pi Phi Express. Limited quantities of the 1995, 1996 and 1997 collectable ornaments are also available. To order an ornament, contact Pi Phi Express (800) 322-1867.



### Convention 1999

"The stars at night are big and bright ..." Why? Pi Beta Phi's 62nd Biennial Convention is coming June 25-29, 1999 to Houston, Texas. Look for more detailed information in the Winter issue of *The ARROW*.

### Chapter Anniversaries

The Missouri Alpha Chapter at the University of Missouri will celebrate its Centennial Anniversary April 23 and 24, 1999. For additional information contact Margaret Pemberton McKinney, 2826 Melody Lane, Columbia, MO, 65203, (573) 874-1327.

The California Eta Chapter at the University of California, Irvine will celebrate its 25th Anniversary. The celebration is being held Memorial Day weekend, 1999. For more information contact Toni Martinovich, 1623 Sunnyside Terrace, San Pedro, CA, 90732.

# Fraternity

News & Notes

## Ford Award Winner Named

The Marilyn Simpson Ford Award was established in 1989 by Pi Beta Phi to honor Marilyn's service as editor of *The ARROW*. The award honors an individual who represents a College Fraternity Editors Association member organization and who provides outstanding service.

This year's award recipient is Mary Lauck-Barr, director of communications and editor of the Alpha Gamma Delta *Quarterly* since 1991. First place in writing, color cover award and innovative handling of routine material are just a few of the many awards Mary has won for her work on the *Quarterly*.

Her energy and dedication has shown as she served CFEA as president, president-elect, treasurer, board member and editor of the *Fraternity Editor*. As book designer of "The Fraternity Voice: A 75-Year History of the College Fraternity Editors Association," Mary demonstrated her talent in designing, editing and writing.

Mary is well known and highly respected in the Greek community. She was the Our Chapter, Our Choice publication and poster designer for the National Interfraternity Conference's national issues awareness materials. Mary also created the national Adopt-A-School logo for the National Interfraternity Conference.

Anyone who knows Mary knows her infectious smile and positive attitude motivates others to continue in excellence. "As Greek communicators, we should never lose sight of the important role we play in the Greek community, shaping and sharing the Greek message."

## Hazing Hotline

Pi Beta Phi has developed a new Hazing Hotline. Concerned collegians, alumnae, parents or administrators can call to report any hazing activities. The Hotline is (800) 320-1867.

## Scholarship Applications

Pi Beta Phi Foundation alumnae and collegiate scholarship applications are now available for the 1999-2000 academic year. Completed applications and supporting documents must be postmarked by January 31, 1999 to be considered.

For more information on an undergraduate scholarship, alumnae scholarship or graduate fellowship, please contact: Scholarship Program, Pi Beta Phi Foundation, 7730 Carondelet, Suite 333, St. Louis, MO 63105 (314) 727-7338.

In addition, the Foundation offers scholarships for Arrowmont classes. The Arrowmont scholarship application deadlines are January 10, 1999, for Spring session, and March 15, 1999, for Summer session. Preference is given to members of Pi Beta Phi.

58

## No Stamp? No Problem

Get in touch with Pi Phi on-line.

**Pi Beta Phi web site**

[www.pibetaphi.org](http://www.pibetaphi.org)

**Central Office e-mail**

[pibetaphi@compuserve.com](mailto:pibetaphi@compuserve.com)

**The ARROW e-mail**

[thearrow@primary.net](mailto:thearrow@primary.net)

## The ARROW Recognized for Excellence

*The ARROW* received two awards at the annual conference of the College Fraternity Editors Association in Norfolk, Virginia. The Winter 1997 issue won second place in feature article content for the article, "A Hands-On Approach to Health." The Spring 1998 issue won a certificate of merit for General Excellence, which rewards the artistic and editorial excellence of an entire issue of the magazine.

# Pi Phi EXPRESS

- A. Toggle necklace with lavalier and arrow.  
J173 \$28.00
- B. Greek letter bead necklace.  
J174 \$22.00
- C. Silver ΠΒΦ necklace.  
J101 \$26.00
- D. Square hook bracelet.  
J103 \$29.00
- E. Wire choker.  
J111 \$22.00
- F. ΠΒΦ pendant.  
J108 \$18.00
- G. Delicate hook bangle.  
J170 \$31.00
- H. Square earrings.  
J110 \$18.00
- I. Silver square engraved ΠΒΦ ring. Sizes 5, 6, 7, 8  
J118 \$19.00
- J. Guardian angel pin.  
J165 \$8.00

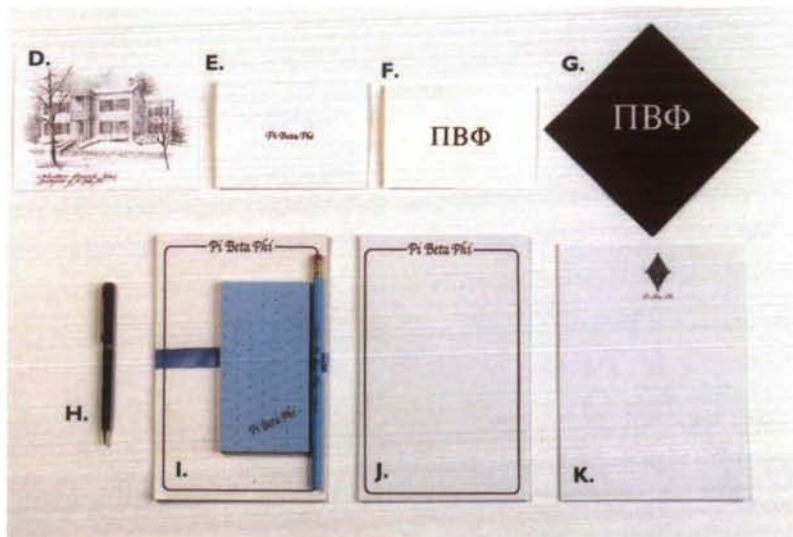
- K. Contemporary arrow pin.  
J155 \$30.00
- L. Arrow rhinestone pin.  
J167 silver \$14.00  
J175 gold \$14.00
- M. Angel on arrow pin.  
J169 \$8.00
- N. Silver and gold angel tac pin.  
J168 \$4.00
- O. Silver ΠΒΦ ring. Sizes 4, 5, 6, 7  
J163 \$14.00
- P. Silver locket ring. Sizes 5, 6, 7, 8  
J117 \$19.00
- Q. ΠΒΦ rhinestone pin.  
J166 \$12.00
- R. Pewter angel pendant/ornament.  
J138 \$8.00



- S. Polar fleece jacket. Forest green, khaki, navy. S, M, L  
SW209 \$60.00
- T. Khaki and thyme Pi Phi hat.  
N110 \$16.00
- U. Plastic ID holder and key chain.  
K110 \$3.00

- V. Natural and navy tote bag.  
N325 \$24.00
- W. Burgundy and navy tote bag.  
N326 \$19.00
- X. Navy and burgundy attaché.  
N349 \$15.50
- Y. Hunter duffel bag.  
N327 \$23.00
- Z. Hunter backpack.  
N328 \$32.50
- AA. Reversible sweatshirt. L, XL  
SW152 \$31.50





A. Ballet angel blanket. 46" x 67"

N360 \$45.00

B. Arrow throw. 46" x 65"

N312 \$40.00

C. Angel throw. 46" x 65"

N100 \$40.00

D. Holt House notecards. 10/pkg.

S185 \$6.00

E. Pi Beta Phi notecards. 9/pkg.

S109 \$5.00

F. Pi Beta Phi notecards. 10/pkg.

S206 \$4.00

G. Pi Beta Phi cocktail napkins. 12/pkg.

S205 \$2.50

H. Pi Beta Phi black pen.

S209 \$7.00

I. Designer gift set.

S103 \$6.00

J. Designer notepad.

S104 \$2.50

K. Crest Stationery. 30/pkg.

S153 \$5.00

L. Arrow bookmark with poem.

J121 \$7.00

M. Angel bookmark with poem.

J114 \$7.00

N. Frame with carnation and poem.

F113 \$14.00

O. Hand-painted ring holder (assorted shapes).

N103 \$5.00

P. Hand-painted trinket box (assorted shapes).

N104 \$5.00

Q. Carnation notecards and pin. 4/pkg.

S113 \$12.50

R. Arrow pin with poem.

J112 \$6.00

S. Sisterhood double-heart pin with poem.

J113 \$6.00

T. Ash-gray sweatshirt with plaid Pi Beta Phi. L, XL

SW197 \$34.50

U. Ash-gray sweatshirt with arched Pi Beta Phi. M only

SW211 \$32.50

V. Navy sweatshirt with Pi Beta Phi and founding date. M, L, XL

SW207 \$32.00

W. Ash-gray sweatshirt with burgundy and blue Pi Beta Phi. L, XL

SW196 \$39.50





**A.** University T-shirt. Lists all universities with Pi Phi chapters. S, M, L

**T125 short sleeve \$15.00**  
**T126 long sleeve \$18.00**

**B.** Acrylic photo book. 5" x 7"  
**F111 \$19.00**

**C.** Burgundy PiBetaPhi alumna mug.  
**N347 4.00**

**D.** Pi Phi flower pot.  
**N320 \$10.00**

**E.** Pi Beta Phi mat frame. 4" x 6"  
**F110 \$5.50**

**F.** Square frame. 2" x 3"  
**F122 \$1.50**

**G.** Stoneware angel mug.  
**N331 \$7.50**

**H.** Cobalt blue PiBetaPhi mug.  
**N348 \$4.00**

**I.** Lucite confetti cup.  
**N330 \$6.00**

**J.** 30 oz. tumbler.  
**N324 \$2.60**

**K.** Ribbon confetti frame. 4" x 6"  
**F126 \$24.00**

**L.** 3-D framed artwork. 7" x 9"  
**N260 \$49.00**

**M.** Slip-on can cooler.  
**N352 \$5.00**

**N.** Water bottle.  
**N298 \$5.00**

**O.** Silver engraved key chain.  
**K119 \$10.50**

**P.** Pewter PiBetaPhi key chain.  
**K115 \$7.00**

**Q.** Wood PiBetaPhi key chain.  
**K100 \$4.00**

**R.** Brass luggage tag with crest.  
**N351 \$11.00**

**S.** Black leather wallet and key chain.  
**K101 \$16.00**

**T.** Tan leather key chain and clip.  
**K102 key chain \$9.00**

**K103 clip \$3.00**

**U.** Lucite arrow key chain.  
**K118 \$5.00**

**V.** Leather and pewter key chain.  
**K109 \$12.00**

**W.** Tan leather ID holder and key chain.  
**K114 \$10.00**

**X.** Alumna corstone key chain.  
**K116 \$6.00**

**Y.** Ash-gray sweatshirt with athletic design. L, XL  
**SW205 \$31.50**



**Z.** Burgundy Pi Phi sweatshirt.  
M, L, XL  
**SW202 \$39.50**

**AA.** Hunter sweatshirt with plaid  
PiBetaPhi. L, XL  
**SW195 \$34.50**

**BB.** Ash-gray sweatshirt with crest. L, XL  
**SW204 \$31.50**

**CC.** Athletic design T-shirt.  
Specify color: navy, burgundy or hunter. L, XL  
**T193 \$12.95**

**BB.** Ash-gray sweatshirt with crest. L, XL  
**SW204 \$31.50**

**CC.** Athletic design T-shirt.  
Specify color: navy, burgundy or hunter. L, XL  
**T193 \$12.95**



- A. 1996 Original badge ornament.  
N233 \$12.00
- B. 1997 Angel ornament.  
N345 \$12.00
- C. 1998 Greek letter ornament.  
N400 \$12.00
- D. Ultra polar fleece. Specify color: black or gray. S, M, L.  
SW212 \$42.50
- E. Khaki and black Pi Phi hat.  
N111 \$16.00
- F. White Pi Beta Phi baby-tee. M, L  
T128 \$14.00
- G. Long sleeve crest T-shirt. S, M, L  
T250 \$20.00
- H. Navy ringer T-shirt. S, M, L  
T240 \$15.00
- I. Maroon ringer T-shirt. S, M, L  
T241 \$15.00
- J. Pi Beta Phi blue and white stripe tote bag.  
N367 \$22.00



Profits from Pi Phi Express help support Fraternity programming.

Name \_\_\_\_\_ Daytime Phone (\_\_\_\_) \_\_\_\_\_

Billing Address \* \_\_\_\_\_ City \_\_\_\_\_ State \_\_\_\_\_ Zip \_\_\_\_\_

Undergraduate     Alumna     Nonmember

	QTY.	ITEM #	DESCRIPTION	COLOR	SIZE	PRICE	TOTAL
<b>Shipping and Handling</b>							
\$35.00 and under	\$5.00						
\$35.01-\$70.00	\$6.50						
\$70.01-\$100.00	\$8.00						
Over \$100.00	\$10.00						
Additional charges:							
2nd Day	\$10.00						
Overnight	\$18.00						
			<input type="checkbox"/> VISA <input type="checkbox"/> MC	<b>Subtotal</b>			
			<b>Signature</b>	<b>MO Residents</b>			
			<b>Card Number</b>	add 7.225% sales tax			
			<b>Expiration Date</b>	<b>Shipping &amp; Handling</b>			
				<b>TOTAL AMOUNT</b>			

Make checks payable to: Pi Beta Phi. Phone orders accepted 8:00-5:00 CST, Monday-Friday \*Billing address is required for all orders including credit card orders. If different shipping address is desired, please enclose a note. Gift certificates are available.

Send completed form and payment to:  
 Pi Beta Phi, 7730 Carondelet, Suite 333, St. Louis, MO 63105  
 (800) 322-1867  
[www.pibetaphi.org/purch.htm](http://www.pibetaphi.org/purch.htm)

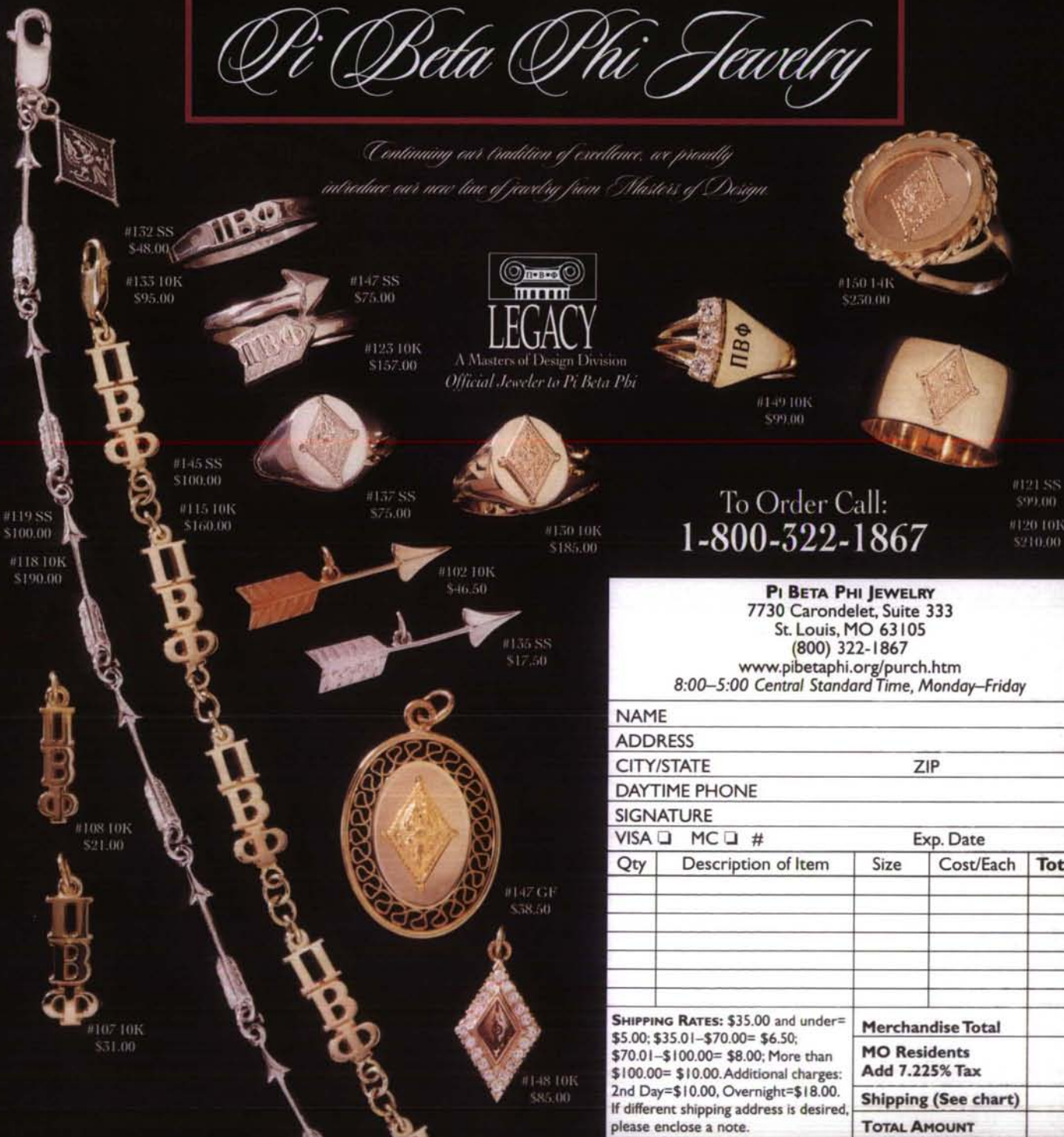


# Pi Beta Phi Jewelry

*Continuing our tradition of excellence, we proudly introduce our new line of jewelry from Masters of Design*



A Masters of Design Division  
Official Jeweler to Pi Beta Phi



To Order Call:  
**1-800-322-1867**

**PI BETA PHI JEWELRY**  
7730 Carondelet, Suite 333  
St. Louis, MO 63105  
(800) 322-1867  
[www.pibetaphi.org/purch.htm](http://www.pibetaphi.org/purch.htm)  
8:00-5:00 Central Standard Time, Monday-Friday

NAME				
ADDRESS				
CITY/STATE			ZIP	
DAYTIME PHONE				
SIGNATURE				
VISA <input type="checkbox"/> MC <input type="checkbox"/> #			Exp. Date	
Qty	Description of Item	Size	Cost/Each	Total

**SHIPPING RATES:** \$35.00 and under= \$5.00; \$35.01-\$70.00= \$6.50; \$70.01-\$100.00= \$8.00; More than \$100.00= \$10.00. Additional charges: 2nd Day=\$10.00, Overnight=\$18.00. If different shipping address is desired, please enclose a note.

<b>Merchandise Total</b>
<b>MO Residents Add 7.225% Tax</b>
<b>Shipping (See chart)</b>
<b>TOTAL AMOUNT</b>

## HAVE YOU MOVED OR CHANGED YOUR NAME?

\_\_\_\_\_  
Initiated Name

\_\_\_\_\_  
New Name (/last/first/middle)

\_\_\_\_\_  
New Address

\_\_\_\_\_  
City/State/Zip

\_\_\_\_\_  
Phone Number

\_\_\_\_\_  
Chapter and Year of Initiation

\_\_\_\_\_  
If you are an officer in the Fraternity, please give title so that we may update officer lists.

Clip this form, place in a stamped envelope and send to:  
Pi Beta Phi Central Office  
7730 Carondelet, Suite 333  
St. Louis, MO 63105

Pi Beta Phi Central Office,  
7730 Carondelet, Suite 333,  
St. Louis, MO 63105