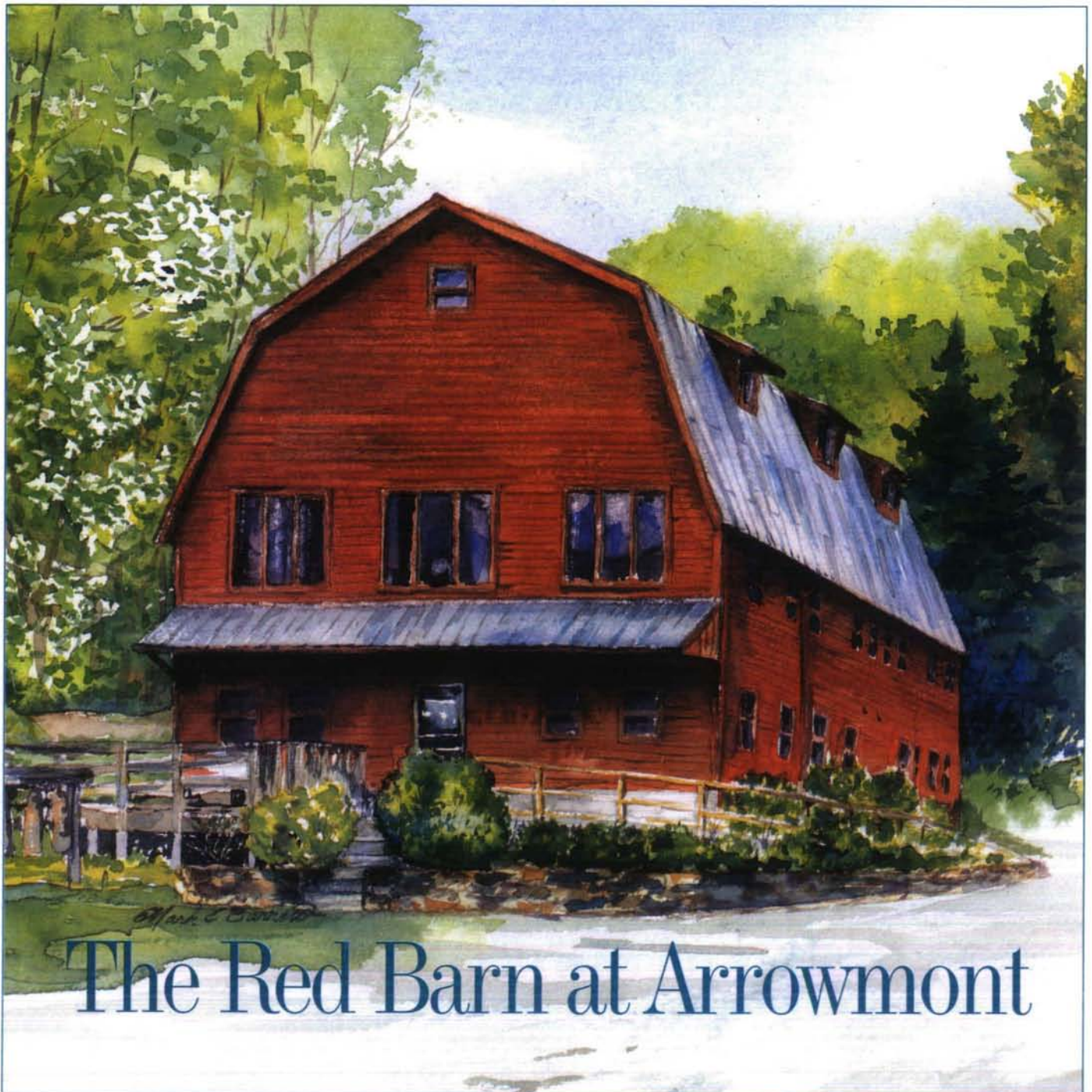


The
Arrow
of Pi Beta Phi Summer • 1999



The Red Barn at Arrowmont

Perspective



**Lois Huston Ross,
Grand Vice President of
Philanthropies**

Pi Beta Phi Philanthropies

Philanthropies are the backbone of our Fraternity. Our members have volunteered thousands of hours of community service. Connections we make inside and outside the Fraternity are often through these philanthropies.

As Grand Vice President of Philanthropies, I serve on the Board of Governors of Arrowmont and the Pi Beta Phi Foundation Board. I assist with Arrowmont, Links to Literacy, Holt House, Arrow in the Arctic and Student Loans. Let me take a few moments to bring you up-to-date on these programs and what they offer.

Arrowmont

Pi Beta Phi was the first women's fraternity to create its own philanthropy. That project, which began as Settlement School, is today Arrowmont School of Arts and Crafts in Gatlinburg, Tennessee. Please read further in this issue about the changes taking place at Arrowmont.

Links to Literacy

Pi Beta Phi has made a real difference through the Links to Literacy program. This philanthropy is about service to others. Since its inception in 1990, thousands of Pi Phis have encouraged reading, writing and other forms of educational advancement through teaching adults to read, tutoring children and staffing libraries.

Holt House

Holt House, our founding home, is located in Monmouth, Illinois and is open to the public on Wednesdays and Fridays. The Holt House Committee's mission is to preserve Fraternity Heritage.

Arrow in the Arctic

The Canadian Philanthropies Committee has supported literacy for a number of years with the Arrow in the Arctic Fund. Thousands of dollars have been donated to the library systems of the Yukon and Northwest Territories. A new Arrow in the Arctic video, "Reading the Signs," has been completed and will be available through Central Office.

Student Loans

Pi Beta Phi has been loaning funds to students since 1910. We are happy to announce loans this year were raised to \$1,500 for undergraduates and \$2,000 for the graduate level.

Thank you for promoting our Pi Phi philanthropies. It is because of your generous financial support, your gifts of time and energy, and your sincere interest that the Fraternity is able to accomplish so much and to maintain its important position in the Greek world. Pi Beta Phi, with your help, is making a difference, a positive difference!

Volume 115 • Number 4
Contents

Editor
Elizabeth Gilkison Cannon

Assistant Editor
Sara Ellen Bell

Copy Deadlines
Spring—December 1 Fall—June 1
Summer—April 1 Winter—October 1

Address correspondence of an editorial nature to the editor.

Pi Beta Phi Central Office
7730 Carondelet, Suite 333
St. Louis, MO 63105
(314) 727-7338
FAX: (314) 727-8049
E-mail: centraloffice@piphico.org
www.pibetaphi.org

**Address Changes and
In Memoriam**
Pi Beta Phi Central Office
7730 Carondelet, Suite 333
St. Louis, MO 63105

**Pi Beta Phi Fraternity, ΠΒΦ
Founded 1867**

Founders
Emma Brownlee Kilgore
Margaret Campbell
Libbie Brook Gaddis
Ada Bruen Grier
Clara Brownlee Hutchinson
Fannie Whitenack Libbey
Rosa Moore
Jennie Nicol, M.D.
Inez Smith Soule
Fannie Thomson
Jennie Horne Tumbull
Nancy Black Wallace

Features

- 4 **The Red Barn at Arrowmont**
Arrowmont's Red Barn gets a facelift.
- 12 **Membership Recruitment**
Rush information including a Legacy Introduction Form, Rush Information Form and chapter addresses.
- 42 **Carolyn Helman Lichtenberg Crest Award Winners**
Four alumnae are recognized as CHL Crest Award Winners.
- 44 **1999–2000 Graduate Consultants**
Graduate Consultants hired for the coming academic year.

Departments

- 8 **Collegiate News**
20 **Academic Excellence**
22 **Fraternity Directory**
24 **News from Arrowmont**
26 **Pi Beta Phi Foundation**
32 **Links to Literacy**
33 **75-Year Members**
34 **Alumnae News**
38 **In Memoriam**
41 **Fraternity News & Notes**
46 **Pi Phi Express**

On the Cover

Artist Mark Barrett, has been a student and an instructor at Arrowmont. He is proud to give something back by preserving the renowned Red Barn with paint and paper.

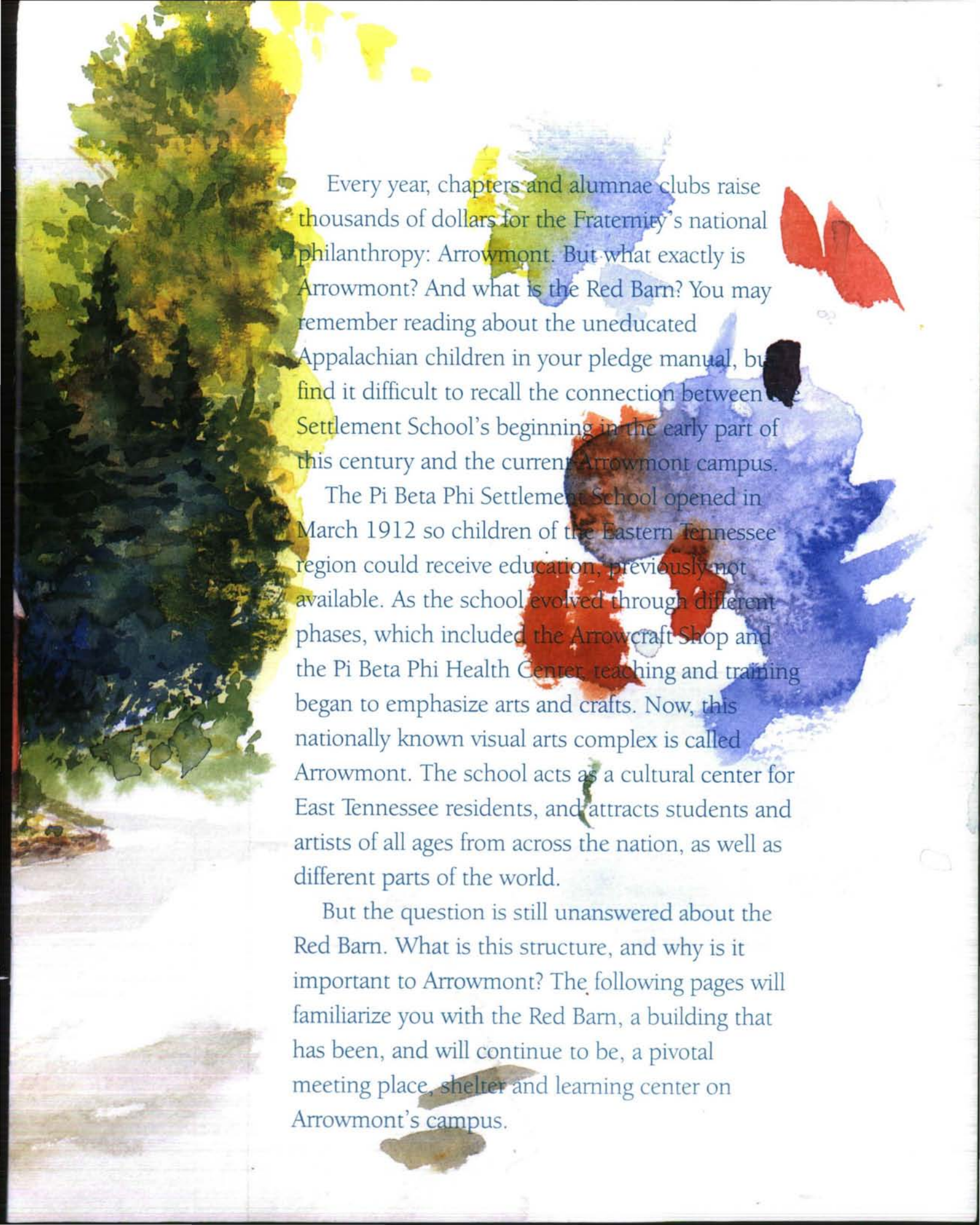


Member College Fraternity Editors Association

The *ARROW of Pi Beta Phi* (USPS 032-540) is published quarterly by Pi Beta Phi Fraternity, 7730 Carondelet, Suite 333, St. Louis, MO 63105-3328. Second class postage paid at St. Louis, MO. POSTMASTER: Send address changes to *The ARROW of Pi Beta Phi*, 7730 Carondelet, Suite 333, St. Louis, MO 63105-3328.



The Red Barn at Arrowmont

A watercolor illustration on the left side of the page depicts a large, leafy tree with green and yellow foliage. To the right of the tree, a red butterfly is shown in flight. The background features soft, blended washes of blue and red colors. The text is overlaid on the right side of the page.

Every year, chapters and alumnae clubs raise thousands of dollars for the Fraternity's national philanthropy: Arrowmont. But what exactly is Arrowmont? And what is the Red Barn? You may remember reading about the uneducated Appalachian children in your pledge manual, but find it difficult to recall the connection between the Settlement School's beginning in the early part of this century and the current Arrowmont campus.

The Pi Beta Phi Settlement School opened in March 1912 so children of the Eastern Tennessee region could receive education, previously not available. As the school evolved through different phases, which included the Arrowcraft Shop and the Pi Beta Phi Health Center, teaching and training began to emphasize arts and crafts. Now, this nationally known visual arts complex is called Arrowmont. The school acts as a cultural center for East Tennessee residents, and attracts students and artists of all ages from across the nation, as well as different parts of the world.

But the question is still unanswered about the Red Barn. What is this structure, and why is it important to Arrowmont? The following pages will familiarize you with the Red Barn, a building that has been, and will continue to be, a pivotal meeting place, shelter and learning center on Arrowmont's campus.

The Red Barn Then ...

Excerpt from the Winter 1959 ARROW.

1959
With tremendous pride in a dream that has become a reality, Pi Beta Phi formally dedicated the Red Barn at the Settlement School in Gatlinburg, Tennessee on June 22, 1959.

The red barn, now completely remodeled and christened the Red Barn, was built in 1923. It served its purpose then as a model barn where the herd was kept and where boys of the Settlement School were taught the care of livestock. It was the home of Lady, the horse that the first Pi Phi nurse, Miss Phyllis Higgenbotham, rode far into the hills to serve the mountain people. In the hayloft, a new form of education was introduced when the first movies ever shown in the Burg [Gatlinburg] were shown there. It was also the site of the first basketball games in the region.

The old red barn begins a new career and a period of new usefulness. It will provide attractive and comfortable housing for students who attend the Summer Craft Workshop; it will make possible a series of special workshops in early spring and late fall; and it will provide housing facilities for those participating in the Craftman's Fair. The front half of the hayloft has been retained as it originally was built, with the ceiling extending to the roofline. This spacious lounge—fashioned for relaxation and recreation—is called the Owl's Nest.

Occupants and visitors find the Red Barn a well-planned, modern building with an attractive background for their work and recreation.

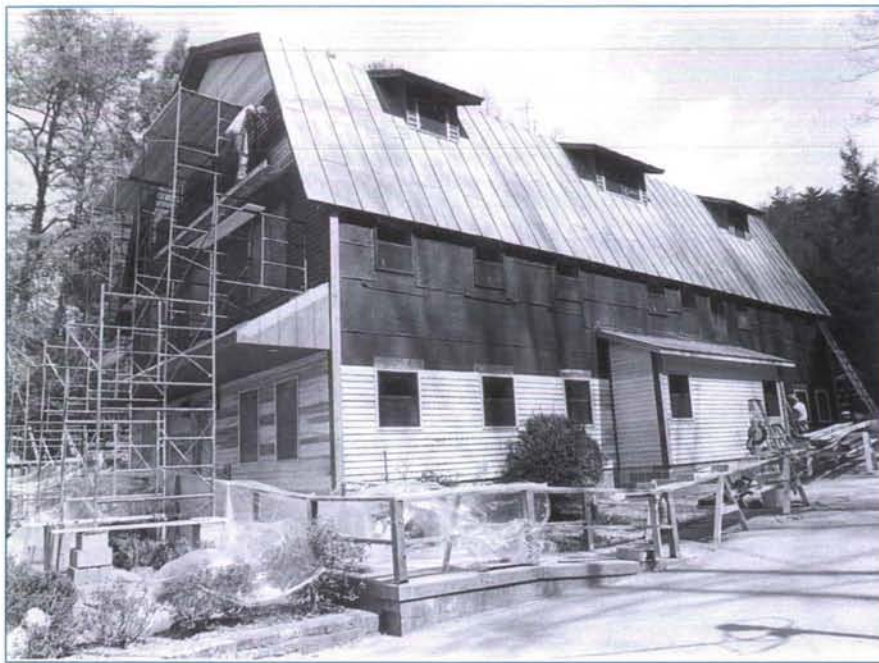
It is hoped that the Red Barn will fulfill the purpose for which it is intended—that of widening the scope of the Fraternity's usefulness in educational fields.



The Settlement School's red barn before it was converted into a dormitory.



The Red Barn circa 1963.



The Red Barn during renovation in 1999.

And Now . . .

1999 Forty years later, the Red Barn is once again being remodeled to accommodate Arrowmont's continuing growth and expansion. The building will still be used for housing students participating in Arrowmont workshops. However, the structure is being fortified with insulation, a roof on the fire escape, an upgraded fire alarm system, a sprinkler system and a complete electrical rewiring of the building.

Guests of the Red Barn will enjoy new flooring, renovated restrooms, additional storage areas and customized clothes storage space. The spacious Owl's Nest will now include a new wall to enhance the room's quiet, inviting atmosphere. New tinted windows, new siding and sub-siding, and new exterior and interior paint will complete the Red Barn's renovations. The Fraternity has donated more than \$350,000 for the remodeling.

This spring, to show their appreciation to the Fraternity and to the city of Gatlinburg, 5th graders from the Pi Phi Elementary School donated a tile mural to complement the Red Barn's interior. The students researched their project at Arrowmont, and created the mural from individually painted tiles. Installed in the Owl's Nest, visitors to the Red Barn can easily view the unique thank you, which was inspired by the original Settlement School's mission to bring education to the mountain people.

Since its inception in 1923, the Red Barn has been a symbol on Arrowmont's grounds. The barn's interior has changed as the school's outreach to its students has evolved. Yet, the actual structure has remained the same, as has the Fraternity's original principle—to educationally enhance individual's lives every day.

Red Barn Magnets & Pollard Pins



You can own a piece of the Red Barn that has been on the Arrowmont property since the early 1900s. The siding was preserved and barn magnets are available to keep the memory of the barn with you.

The memory of the recently demolished Pollard residence at Arrowmont will continue to be remembered with the purchase of an Arrow pin. The pins have been made from the siding of the residence, which was constructed circa 1899. The 100-year-old building was recently demolished to make way for a new residence for Arrowmont's Artists-in-Residence.

The Barn Magnets and the Pollard Pins are available for \$5.00 each with proceeds benefitting the Barn Interior Furnishings Fund and the Pollard Endowment. You can purchase these items at the Pi Beta Phi Convention in Houston, or you may fax an order request to (423) 430-4072, or e-mail Judy Scoonover at arrowmnt@aol.com. A shipping and handling charge will be added to all mail orders.



Collegiate News



Alumnae joined Pennsylvania Epsilon members at Pennsylvania State University to participate in the Children's Miracle Network Dance Marathon. Chapter members, together with members of Sigma Alpha Epsilon Fraternity, raised more than \$56,000, adding to the total \$2.5 million raised during the 48-hour marathon. Alumnae supported chapter members with contributions, as well as with moral support.

An alumna who is an employee of the American Cancer Society, recently visited **GEORGIA ALPHAS** at the University of Georgia to give a presentation about smoking risks.

FLORIDA BETA AAC members at Florida State University have lunch with collegians at the chapter house once a month.

SOUTH DAKOTA ALPHAS at the University of South Dakota, together with alumnae, compiled an updated alumnae address book.

KANSAS BETAS at Kansas State University participate in an alumnae-hosted, new-member ice cream social; a safe trick-or-treat event for alumnae children; and a day of baby-sitting for an alumnae Mom's Day Out during the holiday season.

NORTH CAROLINA BETAS at Duke University enjoyed listening to Pennsylvania Epsilon Laurann Hill Clayton speak about her experiences at Pi Phi Arts Weekend.

Members of the New York City-Manhattan, New York Alumnae Club visited **CONNECTICUT BETAS** at Yale University to inform collegians about career opportunities and the Pi Beta Phi Directions program.

Texas Epsilon Kelli Cole Ladwig hosted a luncheon for **TEXAS EPSILONS** at the University of North Texas and members of the Richardson-Plano, Texas Alumnae Club. Chapter members helped Texas Zeta Shari Williams Zoda assemble Christmas baskets.

WASHINGTON BETAS at

Washington State University help an alumna volunteer at Ronald McDonald House by saving soda can tabs to raise money for the organization.

Alumnae host fireside dinners for **TEXAS ZETAS** at Baylor University. During this event, chapter members divide into groups to attend dinner in different alumnae's homes. Alumnae also serve as Slightly Older Sisters to each pledge.

During the annual Corvallis Area Panhellenic Recognition Brunch at Oregon State University, alumnae enjoy seeing **OREGON BETAS** receive recognition for various programs and activities.

California Zeta Catherine Hamrick-Down, **CALIFORNIA ALPHA'S** AAC Adviser, hosted a new officer training retreat at her home. California Alphas invited four alumnae who attended Stanford University from 1941 to 1946 to share stories of their college experiences during a recent meeting.

TEXAS BETAS at Southern Methodist University organize a luncheon in honor of their new initiates and include parents and local alumnae. At this event, alumnae recognize outstanding chapter members, and collegians recognize alumnae for their unselfish dedication of time, support and friendship.

ARIZONA ALPHAS at the University of Arizona attend a dinner hosted by the local alumnae for the chapter's new pledges. In-coming and out-going chapter officers and members of the chapter's AAC attend an officer training retreat each year.



IOWA BETA members at Simpson College join alumnae for an annual Christmas party where alumnae give gifts for the chapter house.

Alumnae and collegians enjoyed brunch, speakers and a video during **IOWA ZETA'S** Founders' Day celebration at the University of Iowa. Chapter members and alumnae also participated in a Cookie Shine, during which both groups discussed the chapter's future plans and shared past stories.

OHIO THETAS at Bowling Green State University joined Toledo, Ohio Alumnae Club members for a Breakfast with Santa. Area alumnae also annually meet with chapter seniors to discuss careers, resumés, interviewing and job opportunities.

ALABAMA GAMMAS at Auburn University invite local alumnae to the chapter's Homecoming Tea in November and the Founders' Day Picnic in April. Alumnae also are invited to attend chapter activities such as the annual Scholarship Banquet. In addition, the chapter stays in contact with alumnae through their biannual newsletter.

Local lawyers organized and presented a mock trial to **LOUISIANA BETAS** at Louisiana State University, emphasizing the importance of safety and responsibility during chapter events. Chapter members also joined area alumnae to volunteer at Bonne Fete, a festival celebrating Baton Rouge's 300th Birthday.



CALIFORNIA ETAS at the University of California, Irvine recently elected an Alumnae Relations Chairman who is responsible for furthering relations between chapter members and alumnae. After researching ideas via e-mailing alumnae, she prepared a manual to help preserve the ideas for the future position holders. The chairman also notified the South Coast, California Alumnae Club of the chapter's upcoming activities.

Alumnae participate in **WYOMING ALPHA'S** formal dinners, rush and Links to Literacy program. Chapter members at the University of Wyoming also participate in weekly AAC meetings.

LOUISIANA ALPHAS at Tulane University-Newcomb College joined area alumnae to celebrate Founders' Day at the New Orleans Country Club.

VIRGINIA GAMMAS at the College of William and Mary hosted a tea during which seniors and alumnae could become better acquainted. Director of Alumnae Extension Mary Lu Pendergrast Meixell provided seniors with information about opportunities available for them through Alumnae Club membership.

IDAHO ALPHAS at the University of Idaho held a Cookie Shine in honor of the newly established Moscow, Idaho Alumnae Club. Chapter members and alumnae developed a strategic plan for the university's Greek system during the Greek Campus Meeting. Committees addressed issues such as recruiting, academics, Interfraternity Council relations and alumnae involvement.



ABOVE LEFT: Grand Vice President of Philanthropies Lois Huston Ross visited her chapter of affiliation, **Indiana Delta** at **Purdue University**. Chapter members, including **President Bridget Carey**, enjoyed exchanging stories and learning how to become a more effective chapter officer.

ABOVE CENTER: Arizona Betas at **Arizona State University** host an annual trick-or-treat event for children of alumnae. Chapter members dress up in costumes and the children are able to safely receive their candy.

ABOVE: Two Texas Etas, Elaine Tidholm and Lauren Svetgoff, celebrated **Bid Day** at **Texas A & M University** with their mothers, **Oklahoma Alphas Karen Jennings Tidholm and Melissa Bonar Cantrell**.



Indiana Epsilon Phyllis Barkman Ferrell spoke to chapter members on career topics ranging from networking protocol to interview etiquette. Phyllis encouraged members not to underestimate the importance of their Pi Beta Phi leadership positions. She also held a workshop on strategies for formulating cohesive responses to challenging interview questions. Left to right: Heather O'Gara, Joni Crosley, Anne Becker, Janet Briner, Phyllis Barkman Ferrell, Lindsay Sandman, Krista Lutterman, Kristyn Sakelarlis and Lauren Bennett.

Local alumnae joined **WISCONSIN ALPHAS** at the University of Wisconsin to celebrate Founders' Day. Both alumnae and collegians performed a skit depicting each founder, and members were recognized for qualities that reflected qualities in the founders.

Area alumnae hosted a spaghetti dinner for **KENTUCKY ALPHAS** at the University of Louisville. After dinner, the alumnae and collegians sang familiar Pi Phi songs and learned new songs, as well.

NORTH CAROLINA GAMMAS at Wake Forest University stay in touch with their alumnae through an annual, fall newsletter.

VIRGINIA ETAS at the University of Richmond recognize Golden Arrows, distribute awards to collegians and alumnae, and welcome seniors into alumnae status during their Founders' Day celebration.

Local alumnae, as well as alumnae from surrounding areas, supported **INDIANA THETA** at Valparaiso University as they were installed last October. This spring, the chapter enjoyed a potluck with their local alumnae.

TEXAS DELTAS at Texas Christian University and area alumnae have tea and make cookies during their annual Christmas party. In April, chapter members hold an Easter party for alumnae and their children.

OREGON ALPHAS at the University of Oregon annually gather at an alumna's home to become better acquainted with their alumnae and to enjoy dessert. During this event each chapter member is paired with an alumna who becomes an alum mum for the school year. This past winter, Edith Bader Pate, Oregon Alpha's president in 1927 visited the chapter house and met the members.

TENNESSEE BETAS at Vanderbilt University hold an annual career night, during which local alumnae share their occupation expertise.

CALIFORNIA MU members at Pepperdine University host an annual Scholarship Brunch. Parents and alumnae are invited to attend this event where chapter members are recognized for their academic dedication. Alumnae are also invited to attend different chapter functions, including Pie with the Pi Phi, a philanthropic event to raise money for Arrowmont.

ARKANSAS ALPHAS at the University of Arkansas provide their alumnae with lists of members who can baby-sit and tutor, and they hold a safe trick-or-treat night and an Easter egg hunt for the alumnae's children.

MISSOURI ALPHAS at the University of Missouri were hosts to more than 400 alumnae at the chapter's Centennial celebration this spring. Alumnae and chapter members enjoyed an afternoon tea, a bus tour of campus and an evening banquet.



NEW YORK ALPHAS at Syracuse University enjoyed attending an alumnae-sponsored lunch, and holding a homecoming brunch with their alumnae.

IOWA ALPHAS at Iowa Wesleyan College planned a game night at a local alumna's home to increase positive relations between alumnae and new members. The chapter also held a barbecue with alumnae, and helped Iowa Alpha Edith Whiting celebrate her 80th year of Pi Beta Phi membership.

At Bradley University, the **ILLINOIS THETA** alumnae relations Interest Group organized a secret pal semester for graduating seniors and Peoria, Illinois Alumnae Club members. The alumnae sent cards and other gifts to the seniors, and then revealed their identity at a surprise finale party.

Every Monday night, an alumna visits the **TENNESSEE DELTAS** at the University of Tennessee so members can become better acquainted with each alumna. The chapter also gives the Torri Wyatt Davis Award to an alumna who has made a powerful impact on the chapter throughout the year.

FLORIDA EPSILONS at the University of Central Florida joined alumnae from the Orlando-Winter Park Florida Alumnae Club for a luncheon and style show. All the proceeds benefited two local programs designed to provide disadvantaged women with the education and technical support necessary to enter today's competitive work force.



NEW YORK EPSILONS at Rensselaer Polytechnic Institute will be celebrating their 15th Anniversary with special dinners, games and breakfast shines, a concept based on a Cookie Shine. To keep updated with these upcoming events, chapter members and alumnae have been participating in their own e-mail list serve.

Each member of **OKLAHOMA BETA** at Oklahoma State University invited an alumna from her hometown to the chapter's annual Alumnae Appreciation Dinner.

During the holidays, **MICHIGAN ALPHAS** at Hillsdale College participate in an ornament exchange with local alumnae.

TEXAS ALPHAS at the University of Texas and local alumnae designed a patchwork quilt, which they later donated to Arrowmont.

Alumnae helped **MISSOURI BETAS** at Washington University during rush and initiation.

MONTANA ALPHAS at Montana State University join their alumnae for a barbecue each year. The chapter also provides baby-sitting and house-sitting for alumnae, as well as a surprise Alumnae Appreciation Day in April.



ABOVE LEFT: California Betas at the University of California, Berkeley hosted an alumnae dinner, with all proceeds going to Arrowmont. The chapter is also preparing for their Centennial celebration next year. Left to right: Katherine Nesmith, alumnae Paulina Guerrero and Katrina Kuehn, and Katie Beggs.

ABOVE CENTER: Missouri Gammas at Drury College enjoyed visiting with Mildred Pitt, who attended Drury in 1925, and hosted a tea in her honor. The chapter and local alumnae also participated in a picnic and Founders' Day activities together.

ABOVE: Illinois Iota President Keli Gallagher, Membership Chairman Bonnie McChristy and Emily Miller gathered at Illinois State University's groundbreaking ceremony for the new Performing Arts Center. Members of more than 50 organizations participated in the construction kick off ceremony for the center, which will feature the largest, acoustically correct auditorium in the region.

Legacies



Legacies ... Responsibilities and Obligations

by Kay Knittle Brock,
Grand Vice President of Membership

As members of Pi Beta Phi we are all aware of what the Pi Phi experience has meant and continues to mean to us. It is only natural we are eager to share that experience with our sisters, daughters and granddaughters. We anxiously await the phone call that says, "Mom, I've pledged Pi Beta Phi!"

For many there is great joy and happiness when a legacy is pledged. There can also be heartache, disappointment and disbelief, and in some cases even anger and bitterness, when our legacies are not pledged. Each year there are more and more Pi Phi legacies participating in rush and the outcome is uncertain.

A legacy is ...

"A legacy is a daughter, sister or granddaughter of a member." A legacy brings a rich heritage to our Fraternity through a supportive family and an understanding of Fraternity values. Grand Council believes in the tradition and loyalty legacies bring to a chapter. They encourage chapters to give special consideration to legacies whose qualities are comparable to those of other rushees. Legacies are given extra credit in the membership selection ranking process. This credit is added to that given for academics, leadership and activities.

However, membership is by mutual selection and a bid to Pi Beta Phi is no guarantee. It is the privilege and responsibility of chapters to select the members who will enhance their chapter. It is also the privilege of rushees to select the group that is best for them. This year 1,275 legacies took part in rush. Thirty-five percent pledged Pi Phi. The competition is great and difficult decisions are made by both chapters and rushees.

Preparing legacies for rush ...

Alumnae have a responsibility to educate legacies about the rush experience and about Pi Beta Phi. They also have the responsibility to explain the benefits of Greek membership and the importance of keeping an open mind, remembering rush is a mutual selection process. The rushee must feel free to pledge the chapter on her campus where she is most comfortable.

The chapter and its responsibility ...

Chapters have the responsibility of following Pi Beta Phi policies on legacies:

- ▶ The Chapter Membership Chairman shall inform the chapter of all rushees known to be Pi Beta Phi legacies.
- ▶ A legacy shall be invited to at least one invitational round of rush.
- ▶ A legacy who attends a preference party shall be placed on the first bid list.

The chapter must remember the legacy brings an innate dedication, support and commitment to Pi Phi.

The rushee's obligation ...

It is the rushee's obligation to enter rush with an open mind, to look at all Greek groups where she may have an affinity and to select the group that is best for her.

It would be wonderful if Pi Beta Phi could extend membership to every legacy participating in rush, but that is not realistic. Family members and legacies must understand the emotional issues faced during the rush process and not place undue expectations on the rushee or the chapter. The Greek system has many advantages for its members. Those benefits will be best realized when a rushee selects her own group. Knowing a legacy has made the decision that best suits her will bring joy and happiness to all on Bid Day.

It is imperative that our chapters know the Pi Phi legacies going through rush. Please introduce your Pi Phi legacy to the chapter by completing the Legacy Introduction Form provided on page 13.

Someone provided a recommendation
for you. Now is the time for you to return
that favor to Pi Beta Phi.

Rush

How You Can Help

What to send

- Fill out a Rush Information Form (RIF) on any prospective rushee you wish to sponsor for membership in Pi Beta Phi. See form on page 14 in this issue of *The ARROW*. The form may be copied or additional forms are available from Central Office, 7730 Carondelet, Suite 333, St. Louis, MO 63105, (314) 727-7338.
- Return the completed form to the Chapter Membership Chairman of the appropriate chapter. Collegiate chapters and Chapter Membership Chairmen are listed in this issue of *The ARROW* beginning on page 15.

- Please send the RIF early. Complete information about the rushee's qualifications is essential. If possible, send a picture of the rushee.
- Although only one RIF is needed for each rushee, letters are welcome from all alumnae who may wish to write and offer their comments.
- If you know of a legacy going through rush, please fill out a Legacy Introduction Form found on the bottom of this page. The Legacy Introduction Form **does not** take the place of a RIF.
- Save the Summer issue of *The ARROW* with all 1999-2000 rush information. This information **will not** be repeated.

Remember Panhellenic Rules

Dos

- Do use the information gathered by the alumnae panhellenic group in your city, if available. If the rushee has not filled out a panhellenic information form, please encourage her to do so.

Don'ts

- Do not call the family or the rushee for information.
- Do not send food or gifts of any kind to a chapter on behalf of a rushee. Breaking Panhellenic rules may cause the collegiate chapter to be penalized.
- Do not contact the collegiate members during rush.

Legacy Introduction Form

This form is provided as a convenience for Pi Phi alumnae to introduce legacies to collegiate chapters. Please complete the following to ensure that the chapter is aware of your legacy. Return this form to the Chapter Membership Chairman of the appropriate chapter. Please remember this introduction **does not** take the place of a Rush Information Form.

Date: _____ Chapter: _____

College or University: _____

This is to inform you that my: granddaughter daughter sister

Name: _____

From: _____

Will be/is a student on your campus as a: Freshman Sophomore Junior Senior

Her school address (if known) will be/is: _____

City State Zip

Signed: _____

Name (First, Maiden, Last)

Year & Chapter of Initiation

Rush Information Form (RIF)

To be used by Pi Beta Phi alumnae only

- This form may be copied.
- Include a picture of prospective rushee if possible.
- Send this form directly to the Chapter Membership Chairman (CMC) or process through your Alumnae Club Rush Information Chairman, if rushee is from the same area. For addresses of CMCs, consult pages 15-19 in this issue of The ARROW. **Do not** send this form to Central Office.

Name of Rushee _____ Attending _____ College _____

Home Address _____
Street City State Zip

Year in College: Freshman Sophomore Junior Senior

If transfer student: College attended _____ College GPA _____

High School attended _____
Name City State Zip

Class Size _____ Rank _____ GPA _____ SAT/ACT (if known) _____

Parent or Guardian _____

Pi Beta Phi Relatives _____
(sister, mother, grandmother)

Other Greek Affiliated Relatives _____

Please check ONE of the following:

- Wish to highly recommend Wish to recommend

Please check ONE of the following:

- Known personally by an alumna (if so, how long?) _____
 Only factual information included. Source of information _____
 Other _____

Signed _____
Individual Pi Beta Phi Alumna

Address _____
Street City State Zip

Telephone _____ Date _____
Area Code Number

LIST SCHOOL AND COMMUNITY ACTIVITIES AND HONORS: (Attach another sheet if needed.)
Comment on special interests, talents, leadership qualities, personality.

Chapter Addresses, Rush Dates and Chapter Membership Chairmen for the 1999-2000 Rushing Season

Alabama

ALABAMA ALPHA BIRMINGHAM-SOUTHERN COLLEGE

Sarah Sharpe
Box 549110
Birmingham, AL 35254
Late August

ALABAMA BETA UNIVERSITY OF ALABAMA

Laurie Ezell
PO Box 11067
Tuscaloosa, AL 35486
Mid-August

ALABAMA GAMMA AUBURN UNIVERSITY

Rebecca Bougeois
Boyd Hall (Dorm J)
Auburn, AL 36830
Early September

Arizona

ARIZONA ALPHA UNIVERSITY OF ARIZONA

Michelle Perry
1035 North Mountain Avenue
Tucson, AZ 85719
Mid-August

ARIZONA BETA ARIZONA STATE UNIVERSITY

Sara Simmons
340 East University #171
Tempe, AZ 85281
Late August

ARIZONA GAMMA NORTHERN ARIZONA UNIVERSITY

Heather Lindahl
PO Box 6036
Flagstaff, AZ 86011
Mid-August

Arkansas

ARKANSAS ALPHA UNIVERSITY OF ARKANSAS

Mary McGlothlin
502 West Maple
Fayetteville, AR 72701
Mid-August

ARKANSAS BETA UNIVERSITY OF ARKANSAS-LITTLE ROCK

Melissa Robins
3117 South Taylor
Little Rock, AR 72204
Early September

California

CALIFORNIA ALPHA STANFORD UNIVERSITY

Erin McCook
c/o Catherine Hamrick-Down
1570 Notre Dame Avenue
Belmont, CA 94002
April 2000

CALIFORNIA BETA UNIV. OF CALIFORNIA, BERKELEY

Kelly Noonan
2325 Piedmont
Berkeley, CA 94704
Late August

CALIFORNIA GAMMA UNIV. OF SOUTHERN CALIFORNIA

Natasha de Man
667 West 28th Street
Los Angeles, CA 90007
Early September

CALIFORNIA DELTA UNIV. OF CALIFORNIA, LOS ANGELES

Lisa Peterson
700 Hilgard
Los Angeles, CA 90024
Late September

CALIFORNIA EPSILON SAN DIEGO STATE UNIVERSITY

Jennifer Funderburke
5080 College Place
San Diego, CA 92115
Early September

CALIFORNIA ZETA UNIV. OF CALIFORNIA, SANTA BARBARA

Erica Noriega
763 Camino Pescadero
Goleta, CA 93117
Late September

CALIFORNIA ETA UNIVERSITY OF CALIFORNIA, IRVINE

Melinda Vince
218 Arroyo Drive
Irvine, CA 92612
Late September

CALIFORNIA THETA UNIVERSITY OF CALIFORNIA, DAVIS

Kathleen McGlynn
445 Russell Boulevard
Davis, CA 95616
Late September

CALIFORNIA IOTA CALIFORNIA STATE UNIV., CHICO

Amanda Weimer
413 West Fourth Street
Chico, CA 95928
Late August

CALIFORNIA KAPPA UNIV. OF CALIFORNIA, SAN DIEGO

Erica Haibach
7770 Regents Road #113-238
San Diego, CA 92122
Late September

CALIFORNIA LAMBDA UNIV. OF CALIFORNIA, RIVERSIDE

Alison Zachry
1020 Linden Street #12
Riverside, CA 92507
Late September

CALIFORNIA MU PEPPERDINE UNIVERSITY

Laura Miller
24255 Pacific Coast Highway
Malibu, CA 90263
Early October

Colorado

COLORADO ALPHA UNIVERSITY OF COLORADO

Kyndra Gregg
890 11th Street
Boulder, CO 80302
Late August

COLORADO GAMMA COLORADO STATE UNIVERSITY

Caryn Wagner
625 West Lake Street
Fort Collins, CO 80521
Late August

COLORADO DELTA COLORADO SCHOOL OF MINES

Heidi Morrow
910 13th Street
Golden, CO 80401
Late August

Connecticut

CONNECTICUT ALPHA UNIVERSITY OF CONNECTICUT

Melissa Hatteyer
10 Whitney Road
Storrs, CT 06268
Late January 2000

CONNECTICUT BETA YALE UNIVERSITY

Corinne Coughenour
PO Box 202319
New Haven, CT 06520
Mid-September

Florida

**FLORIDA ALPHA
STETSON UNIVERSITY**
Stefanie Cole
Box 8237 Stetson University
DeLand, FL 32720
Mid-October

**FLORIDA BETA
FLORIDA STATE UNIVERSITY**
Kristen Brinkmeyer
519 West Jefferson Street
Tallahassee, FL 32301
Mid-August

**FLORIDA DELTA
UNIVERSITY OF FLORIDA**
Brooke Halcrow
37 West Fraternity Row
Gainesville, FL 32603
Mid-August

**FLORIDA EPSILON
UNIVERSITY OF CENTRAL FLORIDA**
Cathi Cunningham
4304 Greek Park Drive
Orlando, FL 32816
Mid-August

Georgia

**GEORGIA ALPHA
UNIVERSITY OF GEORGIA**
Kelly Crowe
886 South Milledge Avenue
Athens, GA 30605
Mid-August

Idaho

**IDAHO ALPHA
UNIVERSITY OF IDAHO**
Janel Sillflow
507 Idaho Avenue
Moscow, ID 83843
Mid-August

Illinois

**ILLINOIS ALPHA
MONMOUTH COLLEGE**
Mariah Sexton
318 North 9th Street
Monmouth, IL 61462
Late August

**ILLINOIS BETA-DELTA
KNOX COLLEGE**
Nissa Gustafson
Box 1737, Knox College
Galesburg, IL 61401
Early January 2000

**ILLINOIS EPSILON
NORTHWESTERN UNIVERSITY**
Katie Nash
636 Emerson Street
Evanston, IL 60201
Early January 2000

**ILLINOIS ZETA
UNIVERSITY OF ILLINOIS**
Laura Myers
1005 South Wright Street
Champaign, IL 61820
Late August

**ILLINOIS ETA
MILLIKIN UNIVERSITY**
Sarah Horan
235 North Fairview
Decatur, IL 62522
Mid-January 2000

**ILLINOIS THETA
BRADLEY UNIVERSITY**
Camille Wilcox
1004 North Institute Place
Peoria, IL 61606
Mid-August

**ILLINOIS IOTA
ILLINOIS STATE UNIVERSITY**
Bonnie McChristy
709 West College Avenue
Normal, IL 61761
Late August

Indiana

**INDIANA ALPHA
FRANKLIN COLLEGE**
Lisa Harmon
501 East Monroe Street
Elsey Hall Box C
Franklin, IN 46131
Mid-September

**INDIANA BETA
INDIANA UNIVERSITY**
Rachel Romanello
928 East 3rd Street
Bloomington, IN 47406
Early January 2000

**INDIANA GAMMA
BUTLER UNIVERSITY**
Amanda Horvath
831 West Hampton Drive
Indianapolis, IN 46208
Early January 2000

**INDIANA DELTA
PURDUE UNIVERSITY**
Cara Budreau
1012 State Street
West Lafayette, IN 47906
Early January 2000

**INDIANA EPSILON
DEPAUW UNIVERSITY**
Jane Stewart
303 South Locust
Greencastle, IN 46135
Early February 2000

**INDIANA ZETA
BALL STATE UNIVERSITY**
Kristyl Adcock
Ball State Student Center L-1, Box 39
Muncie, IN 47306
Early September

**INDIANA ETA
INDIANA/PURDUE U.-FORT WAYNE**
Jennifer Kennedy
2101 East Coliseum Boulevard
Fort Wayne, IN 46805
Mid-September

**INDIANA THETA
VALPARAISO UNIVERSITY**
Gail Judge
c/o Kelly Nofs, Chapter President
324 Scheele Hall
Valparaiso, IN 46383
Early January 2000

Iowa

**IOWA ALPHA
IOWA WESLEYAN UNIVERSITY**
Jessica Cavins
605 North Broadway, S-T Hall
Mount Pleasant, IA 52641
Mid-September

**IOWA BETA
SIMPSON COLLEGE**
Andrea Nelson
406 North Buxton
Indianola, IA 50125
Late August

**IOWA GAMMA
IOWA STATE UNIVERSITY**
Elizabeth Pelletier
208 Ash Avenue
Ames, IA 50014
Mid-August

**IOWA ZETA
UNIVERSITY OF IOWA**
Sarah Cushman
815 East Washington
Iowa City, IA 52240
Mid-August

**IOWA ETA
DRAKE UNIVERSITY**
Jana Cook
1219 34th Street
Des Moines, IA 50311
Early September

Kansas

**KANSAS ALPHA
UNIVERSITY OF KANSAS**
Stephanie Cooper
1612 West 15th Street
Lawrence, KS 66044
Mid-August

KANSAS BETA
KANSAS STATE UNIVERSITY
Brooke Evans
1819 Todd Road
Manhattan, KS 66502
Mid-August

Kentucky

KENTUCKY ALPHA
UNIVERSITY OF LOUISVILLE
Karessa Knight
2030 Confederate Place
Louisville, KY 40208
Mid-August

KENTUCKY BETA
UNIVERSITY OF KENTUCKY
Elizabeth Isaacs
409 Columbia Avenue
Lexington, KY 40508
Mid-August

KENTUCKY GAMMA
EASTERN KENTUCKY UNIVERSITY
Sarah Massamore
128 Powell
Richmond, KY 40475
Mid-August

Louisiana

LOUISIANA ALPHA
TULANE UNIV./NEWCOMB COLLEGE
Amy Snow
7014 Zimple Street
New Orleans, LA 70118
Mid-January

LOUISIANA BETA
LOUISIANA STATE UNIVERSITY
Jamie Gosserand
Pi Beta Phi House
PO Box 25110
Baton Rouge, LA 70894
Mid-August

Maine

MAINE ALPHA
UNIVERSITY OF MAINE
Danielle Myers
375 College Avenue
Orono, ME 04473
Mid-September

Michigan

MICHIGAN ALPHA
HILLSDALE COLLEGE
Sarah Pederson
304 Hillsdale Street
Hillsdale, MI 49242
Mid-January 2000

MICHIGAN BETA
UNIVERSITY OF MICHIGAN
Anne Riley
836 Tappan
Ann Arbor, MI 48104
Mid-September

MICHIGAN GAMMA
MICHIGAN STATE UNIVERSITY
Kristen McKenzie
343 North Harrison Road
East Lansing, MI 48823
Late August

MICHIGAN EPSILON
WESTERN MICHIGAN UNIVERSITY
Jessica Parr
4304 West Michigan
Kalamazoo, MI 49006
Late August

Minnesota

MINNESOTA ALPHA
UNIVERSITY OF MINNESOTA
Sarah Kinneberg
1109 5th Street SE
Minneapolis, MN 55414
Early October

Mississippi

MISSISSIPPI ALPHA
UNIV. OF SOUTHERN MISSISSIPPI
Kerri Callen
Southern Station Box 8376
Hattiesburg, MS 39406
Mid-August

MISSISSIPPI BETA
UNIVERSITY OF MISSISSIPPI
Marisa Ellender
PO Box 8347
University, MS 38677
Late September

Missouri

MISSOURI ALPHA
UNIVERSITY OF MISSOURI
Melanie Spingler
511 East Rollins
Columbia, MO 65201
Mid-August

MISSOURI BETA
WASHINGTON UNIVERSITY
Melissa Tevik
1 Brookings Drive, Box 1182
St. Louis, MO 63130
Early January 2000

MISSOURI GAMMA
DRURY COLLEGE
Nicki Loewe
900 North Benton Avenue
Springfield, MO 65802
Late August

Montana

MONTANA ALPHA
MONTANA STATE UNIVERSITY
Deena Hendrickson
1304 South 5th
Bozeman, MT 59715
Early September

Nebraska

NEBRASKA BETA
UNIVERSITY OF NEBRASKA
Lindsey Ellsworth
426 North 16th
Lincoln, NE 68508
Mid-August

NEBRASKA GAMMA
CREIGHTON UNIVERSITY
Mikki Chullino
Student Activities Office-SC 110
2500 California Plaza
Omaha, NE 68178
Mid-January 2000

Nevada

NEVADA ALPHA
UNIVERSITY OF NEVADA
Carrie Lawton
869 North Sierra Street
Reno, NV 89503
Mid-August

New Jersey

NEW JERSEY ALPHA
PRINCETON UNIVERSITY
Dana Berneman
20 Nassau Street, Room 408
Princeton, NJ 08540
Late October

New Mexico

NEW MEXICO ALPHA
UNIVERSITY OF NEW MEXICO
Francesca Martinez
1701 Mesa Vista NE
Albuquerque, NM 87106
Mid-August

NEW MEXICO BETA
NEW MEXICO STATE UNIVERSITY
Martha Cobb
300 Greek Complex
Las Cruces, NM 88003
Late August

New York

NEW YORK ALPHA
SYRACUSE UNIVERSITY
Megan Rieger
210 Walnut Place
Syracuse, NY 13210
Mid-January 2000

NEW YORK DELTA
CORNELL UNIVERSITY
Elaine Mazor
330 Triphammer Road
Ithaca, NY 14850
Mid-January 2000

NEW YORK EPSILON
RENSELEAR POLYTECHNIC INSTITUTE
Jennifer Sullivan
8 Sherry Road
Troy, NY 12180
Early September

North Carolina

NORTH CAROLINA ALPHA
UNIVERSITY OF NORTH CAROLINA
Shields Carstarphen
109 Hillsborough Street
Chapel Hill, NC 27514
Mid-August

NORTH CAROLINA BETA
DUKE UNIVERSITY
Caryn Bell
PO Box 99315
Durham, NC 27708
Mid-January 2000

NORTH CAROLINA GAMMA
WAKE FOREST
Yvonne Moelk
PO Box 8745
Wake Forest University
Winston-Salem, NC 27109
Early January 2000

North Dakota

NORTH DAKOTA ALPHA
UNIVERSITY OF NORTH DAKOTA
Jodi Lee
409 Cambridge Street
Grand Forks, ND 58203
Mid-September

Ohio

OHIO ALPHA
OHIO UNIVERSITY
Tami Burns
6 South College Street
Athens, OH 45701
Early October

OHIO BETA
OHIO STATE UNIVERSITY
Erin Scott
1845 Indianola Avenue
Columbus, OH 43201
Early January 2000

OHIO EPSILON
UNIVERSITY OF TOLEDO
Cristin Vail
2999 West Bancroft C1
Toledo, OH 43606
Mid-September

OHIO ZETA
MIAMI UNIVERSITY
Kristen Johnson
Suite 126, Minnich Hall
Oxford, OH 45056
Early January 2000

OHIO ETA
DENISON UNIVERSITY
Kristen E. McClure
425 West College Street
Granville, OH 43023
Mid-January 2000

OHIO THETA
BOWLING GREEN STATE UNIVERSITY
Lisa Hill
Pi Beta Phi House, BGSU
Bowling Green, OH 43403
Early September

OHIO IOTA
UNIVERSITY OF DAYTON
Lisa Behme
421 College Park
Dayton, OH 45409
Early September

Oklahoma

OKLAHOMA ALPHA
UNIVERSITY OF OKLAHOMA
Rachel Gregory
1701 Elm Avenue
Norman, OK 73072
Mid-August

OKLAHOMA BETA
OKLAHOMA STATE UNIVERSITY
Melody Freeman
324 South Cleveland Street
Stillwater, OK 74074
Early August

Oregon

OREGON ALPHA
UNIVERSITY OF OREGON
Megan Edwards
1518 Kincaid Street
Eugene, OR 97401
Mid-September

OREGON BETA
OREGON STATE UNIVERSITY
Caralynn Walker
2685 NW Taylor
Corvallis, OR 97330
Mid-September

OREGON GAMMA
WILLAMETTE UNIVERSITY
Nora Mork
900 State Street, H-230
Salem, OR 97301
Mid-January 2000

Pennsylvania

PENNSYLVANIA BETA
BUCKNELL UNIVERSITY
Melanie Fisher
Box C-3948, Bucknell University
Lewisburg, PA 17837
Late August

PENNSYLVANIA GAMMA
DICKINSON COLLEGE
Emilie Grenier
PO Box 1773
Carlisle, PA 17013
Mid-September

PENNSYLVANIA EPSILON
PENNSYLVANIA STATE UNIVERSITY
Tram-Anh Tran
5 Hiester Hall
University Park, PA 16802
Late August

PENNSYLVANIA ZETA
WASHINGTON & JEFFERSON COLLEGE
Denice Davidson
50 South Lincoln Street, Campus Box 181
Washington, PA 15301
Early February 2000

PENNSYLVANIA ETA
LAFAYETTE COLLEGE
Amy Agresta
Farinon Center, Box 9485
Easton, PA 18042-1783
Mid-September

PENNSYLVANIA THETA
VILLANOVA UNIVERSITY
Elizabeth Kurtz
Connelly Center 2nd Floor
204 Dougherty Hall
Villanova, PA 19085
Early January 2000

PENNSYLVANIA IOTA
UNIVERSITY OF PENNSYLVANIA
Sandhya Kawatra
4027 Walnut Street
Philadelphia, PA 19104
Early January 2000

PENNSYLVANIA KAPPA
LEHIGH UNIVERSITY
Jennifer Elmer
59 University Drive
Bethlehem, PA 18015
Mid-January 2000

South Dakota

SOUTH DAKOTA ALPHA
UNIVERSITY OF SOUTH DAKOTA
Amy Jones
118 North Plum
Vermillion, SD 57069
Early September

Tennessee

TENNESSEE BETA
VANDERBILT UNIVERSITY
Martha Jones
118 24th Avenue South
Nashville, TN 37212
January 2000

TENNESSEE GAMMA
UNIVERSITY OF TENNESSEE
Meredith Brock
1531 Cumberland Avenue, Suite 301
Knoxville, TN 37916
Mid-August

TENNESSEE DELTA
UNIVERSITY OF MEMPHIS
Katharine Oldham
PO Box 528035, Panhellenic Building
Memphis, TN 38152
Mid-August

Texas

TEXAS ALPHA
UNIVERSITY OF TEXAS
Ann Montgomery
2300 San Antonio
Austin, TX 78705
Mid-August

TEXAS BETA
SOUTHERN METHODIST UNIVERSITY
Kathryn Hicks
3101 Daniel
Dallas, TX 75205
Early January 2000

TEXAS GAMMA
TEXAS TECH UNIVERSITY
Jamie Johnston
#17 Greek Circle
Lubbock, TX 79424
Mid-August

TEXAS DELTA
TEXAS CHRISTIAN UNIVERSITY
April Bates
PO Box 290943
Fort Worth, TX 76129
Mid-August

TEXAS EPSILON
UNIVERSITY OF NORTH TEXAS
Nancy Johnson
PO Box 310668
Denton, TX 76203
Mid-August

TEXAS ZETA
BAYLOR UNIVERSITY
Emily Johnson
PO Box 85618
Waco, TX 76798
Early January 2000

TEXAS ETA
TEXAS A & M UNIVERSITY
Kimberly Heisler
1601 Munson Avenue
College Station, TX 77840
Mid-August

Utah

UTAH ALPHA
UNIVERSITY OF UTAH
Jessica Millet
1443 East 100 South
Salt Lake City, UT 84102
Late August

Vermont

VERMONT BETA
UNIVERSITY OF VERMONT
Cora Maddox
369 South Prospect Street
Burlington, VT 05401
Mid-September

Virginia

VIRGINIA GAMMA
COLLEGE OF WILLIAM & MARY
Leslie Burdett
CSU 4232
PO Box 8793
Williamsburg, VA 23186
Late September

VIRGINIA DELTA
OLD DOMINION UNIVERSITY
Sarah Alexander
2122 Webb Center
Norfolk, VA 23529
Early September

VIRGINIA EPSILON
UNIVERSITY OF VIRGINIA
Rachel Moody
1509 Grady Avenue
Charlottesville, VA 22903
Early January 2000

VIRGINIA ZETA
VIRGINIA POLYTECHNIC & STATE UNIV.
Kimberly Sanborn
301 SPH-E
Blacksburg, VA 24060
Early January 2000

VIRGINIA ETA
UNIVERSITY OF RICHMOND
Alexis Pope
RC 55, 28 Westhampton Way
Univ. of Richmond, VA 23173
Early January 2000

VIRGINIA THETA
WASHINGTON & LEE UNIVERSITY
Jenna White
PO Box 1559
Lexington, VA 24450
Early January 2000

Washington

WASHINGTON ALPHA
UNIVERSITY OF WASHINGTON
Meghan Halligan
4548 17th NE
Seattle, WA 98105
Early September

WASHINGTON BETA
WASHINGTON STATE UNIVERSITY
Nichole Osborne
NE 825 Linden
Pullman, WA 99163
Mid-August

WASHINGTON GAMMA
UNIVERSITY OF PUGET SOUND
Kirsten Swieso
1500 North Warner
Tacoma, WA 98416
Mid-January 2000

West Virginia

WEST VIRGINIA ALPHA
WEST VIRGINIA UNIVERSITY
Tiffany Wince
1493 University Avenue
Morgantown, WV 26505
Early September

Wisconsin

WISCONSIN ALPHA
UNIVERSITY OF WISCONSIN
Brenda Balkunas
130 Langdon Street
Madison, WI 53703
Early September

WISCONSIN DELTA
MARQUETTE UNIVERSITY
Michelle Dulski
Box 139 ORC
AMU 140 PO Box 1881
Milwaukee, WI 53201
Late January 2000

Wyoming

WYOMING ALPHA
UNIVERSITY OF WYOMING
Kerri Sawyer
1502 East Sorority Row
Laramie, WY 82070-3418
Late August

Canada

ALBERTA ALPHA
UNIVERSITY OF ALBERTA
Daena Lupal
11019-88 Avenue
Edmonton, AB T6G 0Z3 CANADA
Early September

ONTARIO ALPHA
UNIVERSITY OF TORONTO
Christine Acolacol
220 Beverley Street
Toronto, ON M5T 1Z3 CANADA
Late September

ONTARIO BETA
UNIVERSITY OF WESTERN ONTARIO
Jenny Aaron
293 Central Avenue
London, ON N6B 2L9 CANADA
Late September

ONTARIO GAMMA
UNIVERSITY OF GUELPH
Kate Butler
PO Box 30008, Park Mall Postal Outlet
2 Quebec Street
Guelph, ON N1H 8J5 CANADA
Mid-September

Academic Excellence



Chapters above the all women's 1998 GPA on their campus

- * Alabama Beta, University of Alabama
- * Alabama Gamma, Auburn University
- Arizona Alpha, University of Arizona
- Arizona Gamma, Northern Arizona University
- Arkansas Alpha, University of Arkansas
- * Arkansas Beta, University of Arkansas-Little Rock
- * California Delta, University of California, Los Angeles
- * California Zeta, University of California, Santa Barbara
- California Eta, University of California, Irvine
- * California Theta, University of California, Davis
- * California Kappa, University of California, San Diego
- * California Lambda, University of California, Riverside
- California Mu, Pepperdine University
- Colorado Alpha, University of Colorado
- * Colorado Gamma, Colorado State University
- * Florida Alpha, Stetson University
- Florida Beta, Florida State University
- Florida Epsilon, University of Central Florida
- * Georgia Alpha, University of Georgia
- Idaho Alpha, University of Idaho
- Illinois Alpha, Monmouth College

- * Illinois Beta-Delta, Knox College
- * Illinois Epsilon, Northwestern University
- * Illinois Zeta, University of Illinois
- Illinois Eta, Millikin University
- Illinois Iota, Illinois State University
- Indiana Beta, Indiana University
- Indiana Delta, Purdue University
- * Indiana Epsilon, DePauw University
- Indiana Zeta, Ball State University
- Iowa Beta, Simpson College
- * Iowa Gamma, Iowa State University
- Iowa Zeta, University of Iowa
- Iowa Eta, Drake University
- * Kansas Alpha, University of Kansas
- * Kansas Beta, Kansas State University
- Kentucky Beta, University of Kentucky
- * Kentucky Gamma, Eastern Kentucky University
- Louisiana Alpha, Tulane University-Newcomb College
- * Louisiana Beta, Louisiana State University
- * Michigan Alpha, Hillsdale College
- * Mississippi Alpha, University of Southern Mississippi
- Mississippi Beta, University of Mississippi
- * Missouri Alpha, University of Missouri
- Missouri Gamma, Washington University
- Nebraska Beta, University of Nebraska
- * Nebraska Gamma, Creighton University
- New Mexico Beta, New Mexico State University
- North Carolina Alpha, University of North Carolina

- * North Carolina Beta, Duke University
 - North Carolina Gamma, Wake Forest University
 - North Dakota Alpha, University of North Dakota
 - * Ohio Alpha, Ohio University
 - * Ohio Beta, Ohio State University
 - Ohio Epsilon, University of Toledo
 - * Ohio Zeta, Miami University
 - Ohio Theta, Bowling Green State University
 - * Oklahoma Beta, Oklahoma State University
 - Oregon Alpha, University of Oregon
 - * Oregon Beta, Oregon State University
 - Oregon Gamma, Willamette University
 - Pennsylvania Gamma, Dickinson College
 - * Pennsylvania Epsilon, Pennsylvania State University
 - * Pennsylvania Zeta, Washington & Jefferson College
 - Pennsylvania Eta, Lafayette College
 - Pennsylvania Iota, University of Pennsylvania
 - Pennsylvania Kappa, Lehigh University
 - South Dakota Alpha, University of South Dakota
 - * Tennessee Beta, Vanderbilt University
 - * Tennessee Delta, University of Memphis
 - * Texas Alpha, University of Texas
 - * Texas Beta, Southern Methodist University
 - * Texas Gamma, Texas Tech University
 - Texas Delta, Texas Christian University
 - Texas Epsilon, University of North Texas
 - Texas Zeta, Baylor University
 - * Texas Eta, Texas A & M University
 - Vermont Beta, University of Vermont
 - * Virginia Zeta, Virginia Polytechnic Institute & State University
 - * Virginia Eta, University of Richmond
 - * Virginia Theta, Washington & Lee University
 - * Washington Alpha, University of Washington
 - Washington Beta, Washington State University
 - Washington Gamma, University of Puget Sound
- * two or more semesters/quarters

Collegiate Chapter
1998 Calendar Year
GPA: 3.084

Academic Excellence

Chapters ranking first academically on campus 1998

- * California Theta, University of California, Davis
- California Mu, Pepperdine University
- * Florida Alpha, Stetson University
- Illinois Beta-Delta, Knox College
- Indiana Eta, Indiana Purdue University-Fort Wayne
- * Iowa Beta, Simpson College
- Iowa Gamma, Iowa State University
- * Kentucky Gamma, Eastern Kentucky University
- Louisiana Alpha, Tulane University-Newcomb College
- New Jersey Alpha, Princeton University
- * Ohio Epsilon, University of Toledo
- * Oregon Alpha, University of Oregon
- Pennsylvania Epsilon, Pennsylvania State University
- Pennsylvania Zeta, Washington & Jefferson College
- Vermont Beta, University of Vermont
- Virginia Delta, Old Dominion University
- Washington Gamma, University of Puget Sound
- West Virginia Alpha, West Virginia University

* two or more semesters/quarters

Chapters with a 1998 calendar year GPA of 3.14 (Pi) and above

- California Alpha, Stanford University
- California Delta, University of California, Los Angeles
- California Mu, Pepperdine University
- Connecticut Beta, Yale University
- Florida Alpha, Stetson University
- Georgia Alpha, University of Georgia
- Illinois Epsilon, Northwestern University
- Illinois Zeta, University of Illinois
- Iowa Beta, Simpson College

- Iowa Eta, Drake University
- Kansas Beta, Kansas State University
- Louisiana Alpha, Tulane University-Newcomb College
- Michigan Alpha, Hillsdale College
- Michigan Beta, University of Michigan
- Missouri Alpha, University of Missouri
- Missouri Beta, Washington University
- Missouri Gamma, Drury College
- Nebraska Gamma, Creighton University
- New Jersey Alpha, Princeton University
- New York Delta, Cornell University
- North Carolina Beta, Duke University
- Ohio Alpha, Ohio University
- Ohio Epsilon, University of Toledo
- Ohio Zeta, Miami University
- Oklahoma Beta, Oklahoma State University
- Oregon Gamma, Willamette University
- Pennsylvania Beta, Bucknell University
- Pennsylvania Epsilon, Pennsylvania State University
- Pennsylvania Zeta, Washington & Jefferson College
- Pennsylvania Eta, Lafayette College
- Pennsylvania Iota, University of Pennsylvania
- Tennessee Beta, Vanderbilt University
- Texas Beta, Southern Methodist University
- Texas Zeta, Baylor University
- Virginia Epsilon, University of Virginia
- Virginia Eta, University of Richmond
- Virginia Theta, Washington & Lee University
- Washington Alpha, University of Washington
- Washington Gamma, University of Puget Sound

Chapters with a 1998 calendar year GPA of 3.0 to 3.13

- Alabama Alpha, Birmingham-Southern College
- Arizona Alpha, University of Arizona
- Arizona Gamma, Northern Arizona University
- Arkansas Alpha, University of Arkansas
- California Gamma, University of Southern California
- California Zeta, University of California, Santa Barbara
- California Theta, University of California, Davis
- California Kappa, University of California, San Diego
- Colorado Alpha, University of Colorado
- Colorado Gamma, Colorado State University
- Connecticut Alpha, University of Connecticut
- Florida Beta, Florida State University
- Florida Delta, University of Florida
- Idaho Alpha, University of Idaho
- Illinois Alpha, Monmouth College
- Illinois Eta, Millikin University
- Illinois Theta, Bradley University
- Indiana Alpha, Franklin College
- Indiana Beta, Indiana University
- Indiana Gamma, Butler University
- Indiana Epsilon, DePauw University
- Iowa Gamma, Iowa State University
- Kansas Alpha, University of Kansas
- Kentucky Beta, University of Kentucky
- Kentucky Gamma, Eastern Kentucky University
- Louisiana Beta, Louisiana State University
- Mississippi Alpha, University of Southern Mississippi
- Nebraska Beta, University of Nebraska
- New York Alpha, Syracuse University
- New York Epsilon, Rensselaer Polytechnic Institute
- North Dakota Alpha, University of North Dakota
- Ohio Eta, Denison University
- Ohio Iota, University of Dayton
- Oklahoma Alpha, University of Oklahoma
- Oregon Alpha, University of Oregon
- Pennsylvania Theta, Villanova University
- Pennsylvania Kappa, Lehigh University
- Tennessee Delta, University of Memphis
- Texas Alpha, University of Texas
- Texas Gamma, Texas Tech University
- Texas Eta, Texas A & M University
- Vermont Beta, University of Vermont
- Virginia Gamma, College of William & Mary
- Virginia Zeta, Virginia Polytechnic Institute & State University

Fraternity Directory

Former Grand Presidents

- ELIZABETH TURNER ORR** - Oregon Alpha, 9450 SW Brentwood Place, Tigard, OR 97224
JEAN WIRTHS SCOTT - Pennsylvania Beta, 1186 Cedarwood Drive, Moraga, CA 94556
CAROLYN HELMAN LICHTENBERG - Ohio Alpha, 1064 Westbrooke Way, Atlanta, GA 30319
JO ANN MINOR RODERICK - Oklahoma Beta, 701 Greystone, Stillwater, OK 74074

Officer Emerita

- GRAND TREASURER EMERITA** - Orpha O'Rourke Coenen, Indiana Delta, PO Box 8, Little Chute, WI 54140

Grand Council

- GRAND PRESIDENT** - Beth van Maanen Beatty, Texas Gamma, 1506 San Sebastian Lane, Nassau Bay, TX 77058
GRAND VICE PRESIDENT OF COLLEGIANS - Sarah Ruth Mullis, South Carolina Alpha, 10 Kings Tavern Place, Atlanta, GA 30318
GRAND VICE PRESIDENT OF ALUMNAE - Carolyn Pavletich Lesh, Texas Delta, #1 Forest Park, Richardson, TX 75080
GRAND VICE PRESIDENT OF FINANCE - Lou Ann Montgomery Carter, Oklahoma Alpha, PO Box 3925, 8 Barbary Lane, Wilmington, DE 19807
GRAND VICE PRESIDENT OF MEMBERSHIP - Kay Knittle Brock, Colorado Alpha, 5459 West 85th Terrace, Shawnee Mission, KS 66207
GRAND VICE PRESIDENT OF PHILANTHROPIES - Lois Huston Ross, Indiana Delta, 4531 Royal Ridge Way, Dayton, OH 45429
GRAND VICE PRESIDENT OF PROGRAM DEVELOPMENT - Maurine Hager Jones, Montana Alpha, 14 Dogwood Court, Walnut Creek, CA 94598

Directors

- DIRECTOR OF ACADEMICS** - Frances DeSimone Becque, New York Alpha, 2608 Kent Drive, Carbondale, IL 62901
DIRECTOR OF ALUMNAE ADVISORY COMMITTEES - Linda Noel Ibsen, Colorado Beta, 5241 Lichen Place, Boulder, CO 80301
DIRECTOR OF ALUMNAE COMMUNICATIONS - Emily Russell Tarr, Texas Beta, Route 2 Box 477-B, New Boston, TX 75570
DIRECTOR OF ALUMNAE EXTENSION - Mary Lu Pendergrast Meixell, Tennessee Delta, 4926 Wheatstone Drive, Fairfax, VA 22032

DIRECTOR OF ALUMNAE PROGRAMMING - Susan Landreth Fry, Texas Delta, 2660 South University Boulevard #1, Denver, CO 80210

DIRECTOR OF CHAPTER HOUSE CORPORATIONS EAST - Patricia Emens Anderson, South Carolina Alpha, 1903 Petit Bois Street North, Jackson, MS 39211

DIRECTOR OF CHAPTER HOUSE CORPORATIONS WEST - Ivonna Peterson McCabe, Washington Gamma, 1328 North Jackson, Tacoma, WA 98406

DIRECTOR OF CHAPTER SUPPORT, REGION I - Kristin Noer Olson, Indiana Delta, 2250 Wessman Parkway, Cherry Valley, IL 61016

DIRECTOR OF CHAPTER SUPPORT, REGION II - Melissa Dates Schmidt, Ohio Alpha, 12533 Philmont Drive, Herndon, VA 20170

DIRECTOR OF CHAPTER SUPPORT, REGION III - Jane Landreth Russell, Arizona Alpha, 5711 North 73rd Place, Scottsdale, AZ 85250

DIRECTOR OF COLLEGIATE EXTENSION AND RUSH - Julie Geiger Shannon, Kentucky Beta, 29 Lenape Trail, Chatham, NJ 07928

DIRECTOR OF COLLEGIATE PROGRAMMING - Joanne MaGill Arnold, Texas Beta, 32640 Spinnaker Drive, Avon Lake, OH 44012

DIRECTOR OF FINANCE - Karen Consalus Price, Missouri Alpha, 1504 Kingstream Circle, Herndon, VA 20170

DIRECTOR OF FRATERNITY EDUCATION - Ruth Neel Noble, California Delta, 2564 Via Carrillo, Palos Verdes Estates, CA 90274

DIRECTOR OF MEMBERSHIP - Ann Johnson Gunn, Louisiana Beta, 2207 Salisbury Lane, Houston, TX 77019

Appointed Officers

ANNIVERSARY CELEBRATIONS COORDINATOR - Joy Vanasse Goodenough, Washington Beta, 3932 West Barrett Street, Seattle, WA 98199

CONVENTION COORDINATOR - Barbara Ehni Van Luven, Indiana Epsilon, 2 Portland Court, St. Louis, MO 63108

CONVENTION SITE COORDINATOR - Martha Sherman Malsbary, Indiana Delta, 10014 Craig Drive, Overland Park, KS 66212

DIRECTIONS PROGRAM CHAIRMAN - Ann Johnson Gunn, Louisiana Beta, 2207 Salisbury Lane, Houston, TX 77019

ELECTIONS COORDINATOR - Jo Ann Minor Roderick, Oklahoma Beta, 701 Greystone, Stillwater, OK 74074

FRATERNITY HISTORIAN - Marilyn Simpson Ford, Nebraska Beta, 268 Underwood Drive NW, Atlanta, GA 30328

ASSISTANT MUSIC CHAIRMAN - Jan Kinnune Hillesland, Washington Alpha, PO Box 627, Grapeview, WA 98546

NATIONAL PANHELLENIC DELEGATE - Jean Wirths Scott, Pennsylvania Beta, 1186 Cedarwood Drive, Moraga, CA 94556

PARLIAMENTARIAN - Janice Shrader Falk, Nebraska Beta, 3970 Trails End Lane, Fort Calhoun, NE 68023

RISK MANAGEMENT OFFICER - Michelle Murrell Goseco, California Eta, 8 Sepulveda, Rancho Santa Margarita, CA 92688

SUPERVISOR OF CHAPTER HISTORIES - Penelope Heyl Moss, Kansas Beta, 14024 Pinnacle Drive, Wichita, KS 67230

Fraternity Committees

CANADIAN PHILANTHROPIES COMMITTEE CHAIRMAN - Helen Steeves Jull, 1318 Quebec Avenue SW, Calgary AB T2T 1G2 CANADA

CAROLYN HELMAN LICHTENBERG CREST AWARD COMMITTEE CHAIRMAN - Carolyn Pavletich Lesh, #1 Forest Park, Richardson, TX 75080

CONVENTION COMMITTEE CHAIRMAN - Donna Coffman Dawson, 11635 Greenbay Drive, Houston, TX 77024

HOLT HOUSE COMMITTEE CHAIRMAN - Alice Gill Goshorn, 4921 East State Road 252, Franklin, IN 46131

LEGISLATIVE COMMITTEE CHAIRMAN - Dee Rippetoe Richardson, 2801 Camelot Drive, Oklahoma City, OK 73120

LINKS TO LITERACY COMMITTEE CHAIRMAN - Jean Egmon, 1625 Sheridan Road, #212, Wilmette, IL 60091

NOMINATING COMMITTEE CHAIRMAN - Robin McPherson Rohrback, 2300 Riviera Drive, Vienna, VA 22181

SETTLEMENT SCHOOL BOARD OF GOVERNORS CHAIRMAN - Dawn Sheeler Ford, 1936 Stonebrook Drive, Knoxville, TN 37923

STUDENT LOANS COMMITTEE CHAIRMAN - Nancy Fogle Pollard, 120 Hume Lane, Bakersfield, CA 93309

Consultants

TRAVELING GRADUATE CONSULTANTS - Becky Glaze, Oklahoma Beta; Rebecca Grinager, Iowa Beta; Taylor Kepler, Texas Beta; Emma-Anne Millard, Pennsylvania Eta; Jennifer Shaffer, Texas Beta; Michelle Vieira, California Kappa

RESIDENT GRADUATE CONSULTANTS - Julie Petty, Illinois Eta; Katie Schwie, Tennessee Delta

Fraternity Directory

Pi Beta Phi Central Office

7730 Carondelet, Suite 333, St. Louis,
MO 63105

Phone: (314) 727-7338

FAX: (314) 727-8049

E-mail: centraloffice@piphico.org

Web site: www.pibetaphi.org

EXECUTIVE DIRECTOR - Renée Ross Mercer,
Iowa Zeta

CONTROLLER - Tisha Hamasaki

ARROW EDITOR/COMMUNICATIONS

COORDINATOR - Elizabeth Gilkison Cannon,
Missouri Alpha

PI PHI EXPRESS - (800) 322-1867

Web site: www.pibetaphi.org/purch.htm

Arrowmont

Arrowmont School of Arts and Crafts -

Box 567, Gatlinburg, TN 37738

Phone: (423) 436-5860

E-mail: arrowmnt@aol.com

Web site: www.arrowmont.org

DIRECTOR - Sandra Blain, Arizona Beta

Holt House

402 East 1st Avenue, Monmouth,
IL 61462

Phone: (309) 734-3988

HOSTESS - Jane Mears Warfield, Illinois Alpha

HOURS - By appointment only.

Fraternity Insurance Representatives

PROPERTY AND LIABILITY INSURANCE - M-J
Insurance, Inc., Sorority Department, PO
Box 50435, Indianapolis, IN 46250

MEDICAL INSURANCE - Coverdell & Company,
2622 Piedmont Road NE, Atlanta,
GA 30324 (800) 787-8711

Pi Beta Phi Foundation Board of Trustees

PRESIDENT - Betty Blades Lofton, Indiana
Gamma, 9060 Pickwick Drive, Indianapolis,
IN 46260

VICE PRESIDENT - Elizabeth Davenport Garrels,
Iowa Alpha, 2257 235th Street, Mount
Pleasant, IA 52641

SECRETARY - Carol Inge Warren, North
Carolina Beta, 5439 Cascade Drive, Lisle,
IL 60532

TREASURER - Ann Warmack Brookshire, Texas
Beta, 820 Mallory Court, Tyler, TX 75703
Beth van Maanen Beatty, Texas Gamma, 1506
San Sebastian Lane, Nassau Bay, TX 77058
Lois Huston Ross, Indiana Delta, 4531 Royal
Ridge Way, Dayton, OH 45429

Foundation Committees

ALUMNAE SCHOLARSHIP COMMITTEE

CHAIRMAN - Elizabeth Gray Caldwell, 2636
Cambria Mill Road NE, Granville,
OH 43023

EMMA HARPER TURNER FUND COMMITTEE

CHAIRMAN - Anne Busch Hills, 440
Meadowview Drive, La Canada, CA 91011

GRADUATE FELLOWSHIP COMMITTEE

CHAIRMAN - Susan Crane Kyle, 1303
Jambalana Lane, Fort Myers, FL 33901

UNDERGRADUATE SCHOLARSHIP COMMITTEE

CHAIRMAN - Claire Curry Carlson, 2400
Shoreline, Abilene, TX 79602

Pi Beta Phi Foundation

7730 Carondelet, Suite 333, St. Louis,
MO 63105

Phone: (314) 727-7338

FAX: (314) 727-1255

E-mail: fndn@piphico.org

Web site: pibetaphi.org/foundation.htm

DIRECTOR - Lynn M. Raney



Who: Graduating seniors

What: Pi Beta Phi's Directions Program

Where: Pi Beta Phi Central Office

When: Today

Why: Because you're graduating and moving to a new area

How: Contact Pi Beta Phi Central Office for information

News from Arrowmont

by Gretchen Church

A Home Away from Home



Construction on the New Pollard Housing Facility

Construction has begun on a new housing facility for the Artists-In-Residence, studio assistants and work study students at Arrowmont.

The first floor will house Artists-In-Residence. It has five bedrooms with bathrooms, a living room, a kitchen, a dining room, a laundry room and a storage space. The second floor, which will be for work study students and studio assistants, will include five dormitory style rooms with bathrooms and will house 17 people. It will also contain two apartments for visiting artists or VIPs. The new facility is located at the site of the Pollard dorm and will bear the same name.

Named in honor of Mary O. Pollard, the first head resident of the Pi Beta Phi Settlement School, the existing building dates back to the early 1900s and was one of the first structures on the Settlement School property. The building originally housed the kitchen, dining room and girls dormitory.

The story of Vermont Alpha Mary O. Pollard and the building bearing her name is an interesting part of Arrowmont's history. Born in Placerville, California, on October 12, 1873, Mary received her undergraduate degree from Vermont's Middlebury College in 1896.

Miss Pollard was a teacher for many years serving in schools in Vermont, Minnesota and Illinois, before she filled the position of head resident of the Settlement School from 1913-1916.

At the 1922 meeting of the Settlement School Committee and the Pi Beta Phi Grand Council, the original cottage was named the Mary Pollard Cottage in recognition of her "loyalty and worthy service to the Fraternity as the first Pi Beta Phi Head Resident." In later years the cottage, known simply as Pollard, housed the work study and studio assistants that came to Arrowmont each spring and summer.

Time and weathering have taken their toll on the old building. Over the

years, the structure, which had no solid foundation, only stacked rock supports, was repaired repeatedly. The antiquated plumbing and electrical system were too costly to maintain, and heavy rains flooded the building several times. Though the building was carefully maintained on a regular basis, it was a war against the elements, according to Arrowmont Director Sandy Blain.

The building has housed many young artists throughout the years. Pollard's atmosphere encouraged camaraderie and togetherness, according to Roy Overcast, an accomplished Nashville artist, who spent five summers at Arrowmont during the 1970s. "Living in Pollard was quaint—like being with your family in a mountain cabin. I made lots of friends that I still keep in touch with. The whole Arrowmont experience is one that changed my life and enhanced my talents. It was the most stimulating time in my life. I can honestly say that I have never been in a more creative working environment since."

Pollard will remain a symbol of the past, of Arrowmont's historic beginning as the Settlement School and of the remarkable woman for which it is named.

It will also serve as a beacon of the future and of the continued tradition of educating young artists.



Find out about Arrowmont events and class schedules at www.arrowmont.org. Keep in touch via e-mail at arrowmnt@aol.com.

News from Arrowmont

www.arrowmont.org



Arrowmont Board of Governors member Ann Norris observes as Arrowmont BOG Chairman Dawn Sheeler Ford gives the Arrowmont Distinguished Service Award to Clare Verstegen. Looking on is Arrowmont Director Sandra Blain.

Former Assistant Director Receives Distinguished Service Award

Clare M. Verstegen, associate professor of surface design at Arizona State University, was recently awarded the Distinguished Service Award from Arrowmont School of Arts and Crafts in honor of her exemplary service and commitment to furthering the mission of the school.

Clare began her association with Arrowmont as a studio assistant in 1979. She became Arrowmont's first full-time assistant director from

1980 to 1987. While at Arrowmont, Clare coordinated all gallery programs, including a successful gallery fundraising campaign in 1992. She also initiated Arrowmont's current Saturday morning children's classes and Elderhostel Program.

A current member of Arrowmont's Advisory Council, Clare regularly teaches screen printing workshops and is a consultant to the school on surface design issues and conferences.

Clare, born in Little Chute, Wisconsin, holds a bachelor's of science degree in art education and received a master's of fine arts degree from the Cranbrook Academy of Art. Before working at Arrowmont, Clare was an elementary school art teacher.

Calendar of Events June–August 1999

Gallery Exhibitions

- **1999 National Summer Faculty Invitational**
A mixed media exhibition featuring the works of Arrowmont's nationally recognized visiting faculty members who are teaching during the Summer Workshop sessions.

May 21–August 13, 1999

- **All Things Considered Basketry Exhibition**
Shown in conjunction with the Tradition & Innovation: Basketry Today Conference in October. Co-sponsored by Arrowmont and the Handweaver's Guild of America.

August 20–October 10, 1999

Workshop Schedule

- **Summer Adult Classes**
Arrowmont's well-known one- and two-week workshop sessions in a variety of craft media. On-campus housing and meals are available.

June 7–11, 14–18, 21–25, June 28–

July 9, July 12–16, 19–30, August 2–6, 9–13, 1999

Educational Program

- **Tennessee Wood Turners Conference**
For more information contact the Tennessee Association of Wood Turners, Mike Zinser—President, at (615) 292-8652 or (615) 366-4173.

August 27–29, 1999

Arrowmont galleries are open year-round to the public, Monday–Saturday, 8:30 a.m.–4:30 p.m. For more information contact Arrowmont at (423) 436-5860 or visit the Web site at www.arrowmont.org.

Foundation

Scholarship Recipients Selected

The Pi Beta Phi Foundation Trustees and members of the Undergraduate Scholarship, Graduate Fellowship and Alumnae Continuing Education (ACE) Scholarship committees are pleased to announce that 50 Pi Phis will receive awards for the 1999–2000 academic year. These women exemplify academic excellence and have demonstrated a commitment to volunteer service in their communities, on their campuses and within Pi Beta Phi.

Collegians and alumnae interested in applying for scholarships and/or fellowships for the 2000-2001 academic year should contact the Scholarship Program, Pi Beta Phi Foundation, 7730 Carondelet, Suite 333, St. Louis, MO 63105. An indication should be made as to which application is requested. Applications can also be obtained through Pi Phi's official Web site, www.pibetaphi.org/foundation.htm. A firm January 31 deadline applies for all applications and supporting materials.

Betty Blades Lofton Scholarship



ALLISON BELL
Indiana Epsilon
DePauw University
Health & Physical Performance

Melissa Gail Aptman Scholarship



JAMALEE HUNTLEY
Missouri Gamma
Drury College
Chemistry

Joyce Wherritt Bowers Scholarship



SARAH IDTINGS
Ohio Alpha
Ohio University
Political Science

New York Zeta Scholarship



KATHERINE JOLLON
Virginia Eta
University of Richmond
English

Dallas Alumnae Club/ Ann Dudgeon Phy Scholarship



KENDRA KEIERLEBER
Texas Gamma
Texas Tech University
Elementary Education

Jo Ann Minor Roderick Scholarship



CATHRYN LUEDTKE
Arizona Alpha
University of Arizona
Elementary Education

Harriet Rutherford Johnstone Scholarship



MERRITT NOBLE
Alabama Beta
University of Alabama
Marketing

Adele Collins Mason Scholarship



CADY NORENE
California Theta
Univ. of California, Davis
Agricultural & Managerial
Economics

Ruth Barrett Smith Scholarship



APRIL ROSS
South Dakota Alpha
Univ. of South Dakota
English & Spanish

Frances Hall Comly Scholarship



GINA RUSSO
Iowa Zeta
University of Iowa
Communications Studies

Holiday Scholarship



KRISTIN IRION
North Dakota Alpha
Univ. of North Dakota
Communications Disorders/
Speech Pathology
Johnanna Zournas
Scholarship

Holiday Scholarship



STEPHANIE KIDD
Nebraska Gamma
Creighton University
News Journalism & Theater
Louisiana Alpha
Triple M Scholarship

Holiday Scholarship



CORA MADDOX
Vermont Beta
University of Vermont
European Studies

Holiday Scholarship



TIFFANY WOHLFEIL
Connecticut Beta
Yale University
Anthropology

Sarah Ruth Mullis
Scholarship



KRISTI SECHMAN
Indiana Gamma
Butler University
Pharmacy



COURTNEY STALEY
Texas Gamma
Texas Tech University
Psychology



AVALYN TAYLOR
Virginia Epsilon
University of Virginia
Political & Social Thought



MANDY BRILL
Illinois Theta
Bradley University
Elementary Education



PEGGY CHENG
Nebraska Gamma
Creighton University
Biology



CARA JO DUNBAR
Indiana Delta
Purdue University
Health Science/Physical Therapy

Friendship Fund
Scholarship

Friendship Fund
Scholarship

Friendship Fund
Scholarship

Friendship Fund
Scholarship

Friendship Fund
Scholarship



DELIA GOOLSBY
Florida Epsilon
University of Central Florida
Education



JESSICA GUSTAFSON
Oklahoma Beta
Oklahoma State University
Family Relations & Child
Development



JULIE HANSON
Montana Alpha
Montana State University
Spanish



JANORA HAWKINS
Mississippi Alpha
Univ. of Southern Mississippi
International Studies &
German



KENDRA HOLMES
Oklahoma Alpha
University of Oklahoma
Psychology

Friendship Fund
Scholarship

Friendship Fund
Scholarship

Friendship Fund
Scholarship

Friendship Fund
Scholarship

Friendship Fund
Scholarship



JAMIE JANOTA
Oklahoma Beta
Oklahoma State University
Chemical Engineering



MARGO KEITH
Alabama Gamma
Auburn University
Accounting



EMILY LARSEN
Wisconsin Alpha
Univ. of Wisconsin, Madison
Exercise Science



GINA MARNELL
Pennsylvania Kappa
Lehigh University
Psychology



LAURA MILLER
California Mu
Pepperdine University
Psychology

Scholarship



REBECCA MOCNIAK
Ohio Epsilon
University of Toledo
Biomedical Engineering

Friendship Fund
Scholarship



RACHEL STOCKLEY
Illinois Beta-Delta
Knox College
Elementary Education
& Psychology

Friendship Fund
Scholarship



AMBER WILLIAMSON
Mississippi Alpha
Univ. of Southern Mississippi
Hotel, Restaurant &
Tourist Management

Alumnae Continuing
Education Scholarship



MARYBETH DUES KEMP
Illinois Alpha
Master's in Business
Administration

Scholarship



JULIE MORAN
Minnesota Alpha
University of Minnesota
Marketing

Friendship Fund
Scholarship



SHANNON THOMES
Missouri Gamma
Drury College
Business Administration
& French

Graduate Fellowship



PHYLLIS BARKMAN FERRELL
Indiana Epsilon
Master's in Business
Administration

Alumnae Continuing
Education Scholarship



TARA RODERICK LINVILLE
Oklahoma Beta
Physician's Assistant

Scholarship



KRISTINE MORIARTY
Idaho Alpha
University of Idaho
Political Science & Spanish

Friendship Fund
Scholarship



LAURA VEAZY
Oklahoma Alpha
University of Oklahoma
Microbiology

Graduate Fellowship



EMILY KAHLER
Mississippi Beta
Doctor of Medicine

Alumnae Continuing
Education Scholarship



RENA MURPHY
Kentucky Gamma
Doctor of Higher Education
Administration

Scholarship



LAURA RAINER
Alabama Gamma
Auburn University
Zoology

Friendship Fund
Scholarship



MELANIE WAGNER
Kansas Beta
Kansas State University
Elementary Education

Graduate Fellowship



**REBECCA HARBOUR
PARTESOTTI**
Alabama Beta
Juris Doctorate

Alumnae Continuing
Education Scholarship



DONNA CUNNINGHAM WOOD
Texas Zeta
Master's in Counseling

Scholarship



SUSAN RO
Oklahoma Beta
Oklahoma State University
Microbiology & Public Relations

Friendship Fund
Scholarship



SHERRY WALKER
Mississippi Alpha
Univ. of Southern Mississippi
Nursing

Past Grand Presidents
Memorial Fellowship



KARLA ERICKSON SATCHWELL
Montana Alpha
Doctor of Educational Policy
Studies

Adele Collins Mason
Alumnae Continuing
Education Scholarship



BONNIE SWANTON BITNER
Wyoming Alpha
Master's in Education

This listing includes recognition and memorial gifts to the Pi Beta Phi Foundation from September 1, 1998 through March 31, 1999. Recognition and memorial gifts are listed in the Winter and Summer issues of The ARROW.

Pi Beta Phi Foundation

In Recognition of:

- ARKANSAS BETA FEBRUARY 1974 INITIATES**, as we celebrate 25 years of membership
by Nancy Fogle Pollard
- BETH VAN MAANEN BEATTY**, Texas Gamma
by Nancy Carlock Rogers
- BARBARA BASS BERRY**, Oklahoma Alpha, honoring her work with Pi Beta Phi
by Kathryn Louise Taylor
- RUTH RAMLOW BERTKE**, Ohio Epsilon, alumna initiate, celebrating her 15th anniversary as a member of Pi Beta Phi
by Carolyn Lake Yenrick
- ANN WARMACK BROOKSHIRE**, Texas Beta
by Jane Porter Warmack
The Todd S. Healy Family
- ANN WILLIAMS BROWN**, Ohio Beta
by Merry Maidlow Hamilton
- MARTHA THOMAS CASSELBERRY**, Illinois Theta, for her friendship
by SaraCathryn Jones Ball
- ANNE ALLEN CLIFFORD**, Ohio Beta
by Merry Maidlow Hamilton
- DANIELLE ELENA DAMATO**, Florida Delta, celebrating her graduation
by Christine Margaret Sharak
- KAYE WOODMAN DAVIS**, Ohio Beta
by Merry Maidlow Hamilton
- MAURINE STUART DULIN**, Virginia Gamma
by Judy Smythe Sutherland
- CHRISTINE A. FITZLER**, Missouri Alpha, on her graduation
by Ronald & Margaret Fitzler
- JEANNE NICOLE FITZLER**, Missouri Alpha, on her graduation
by Ronald & Margaret Fitzler
- MOLLY MAIDLOW FRANTZ**, Ohio Beta
by Merry Maidlow Hamilton
- JESSICA GEE**, Texas Beta, celebrating her initiation as our family's third generation Pi Phi
by Marilyn Beckmann Henderson
- JOCELYN FOSTER GIVENS**, Oklahoma Alpha
by Julia Corley Fish
- JANET ELLIS GOFF**, Ohio Beta
by Merry Maidlow Hamilton
- MYRNA LATOURETTE GREENE**, Indiana Beta
by Barbara Greene Hollingsworth
- JAMES & HARRIET BEARDSLEY HAWKINS**
by Harry & Martha Bowman Ebeling
- INDIANA THETA CHAPTER**, celebrating the chapter's installation at Valparaiso University
by Illinois Iota Chapter
- JULIE MARIE JONES**, Missouri Alpha, for her work on the Foundation's Collegiate Phonathon with Texas Beta
by Nancy Carlock Rogers
- LOIS BADGLEY LAYCRAFT**, Alberta Alpha
by Judy Smythe Sutherland
- VIRGINIA DENBROCK MAIDLOW**, Ohio Beta
by Merry Maidlow Hamilton
- KENDRA L. MCCLINTIC**, North Dakota Alpha, on her graduation
by Debra McClintic
- MARY MCFARLAND**, Indiana Gamma House Director, for her friendship to the collegians and alumnae of Indiana Gamma
by Katherine Wohlfield Peters
- MICHIGAN DELTA CHAPTER**
by Robina Quale
- MARGINE TESSENDORF MOUL**, Ohio Zeta
by Merry Maidlow Hamilton
- NEW YORK ALPHA CHAPTER**, on the occasion of Chapter Loyalty Day
by Frances DeSimone Becque
- OHIO EPSILON 1968 PLEDGE CLASS**, Happy Anniversary Pledge Sisters!
by Carolyn Lake Yenrick
- JEAN WHITE POTTS**, Oregon Gamma
by Vivian Aspinwall Chambers
- BETTY SHELTON RAY**, Louisiana Alpha, for her friendship
by SaraCathryn Jones Ball
- PATTY NEWTON RENNICK**, Arizona Alpha, celebrating her membership as a Golden Arrow
by Louemma Breckenridge Brookey
- LINDA LINSKOTT ROBERT**, Ohio Zeta
by Merry Maidlow Hamilton
- LOIS HUSTON ROSS**, Indiana Delta
by Harry & Martha Bowman Ebeling
- CYNTHIA BREWER SAACKS**, Louisiana Beta, for achieving board certification in obstetrics/gynecology
by Don & Barbara Wallace Brewer
- DAWN RENEE SCHAEFER**, Texas Delta, on her graduation
by Lloyd & Karen Schaefer
- JEAN WIRTHS SCOTT**, Pennsylvania Beta
by Carrie-Mae MacNair Blount
- JEANNE FISHER SNEATH**, Ohio Alpha, for her friendship
by SaraCathryn Jones Ball
- EMILY RUSSELL TARR**, Texas Beta, for her wonderful leadership and guidance to our club
by East Fort Bend County, Texas Alumnae Club
- TEXAS BETA CHAPTER**, for their work on the Foundation's Collegiate Phonathon
by Nancy Carlock Rogers
- WASHINGTON GAMMA CHARTER MEMBERS**
by Tacoma, Washington Alumnae Club
- AILEEN AYLSWORTH WELGAN**, Alberta Alpha
by Judy Smythe Sutherland
- STEPHANIE LEONARD WITTE**, Ohio Theta
by Kathleen Anderson Witte

In Memory of:

- JEANETTE "STEVE" ADAIR**, mother of Pat Adair Bothe & Stephanie Adair Vickery
by Sarah Ruth Mullis
- VIRGINIA MACKINTOSH ALDRICH**, Colorado Alpha
by Helen Welch Rehwaldt
- CHAR KINCAID ANTCLIFF**, Indiana Beta
by Alice Vanosdol Gray
- MARYLYN SANDEFER ARNOT**, North Carolina Alpha
by Lyn Amot Clark
Courtney Clark Grigsby
- HARRIET RICE BAGNELL**, Maryland Alpha
by Valerie Siegel Bertoglio
- LESLEY SEATOR BENNETT**, Indiana Epsilon
by Robin McPherson Rohrbach
- PAUL BLOLAND**, husband of Ruth Nolte Bloland
by Ruth Neel Noble
- JANE WALKER BOTSFORD**, Ohio Epsilon
by Julia Sullivan Boyer
- LAVERNE MATTESON BOYLES**, Oklahoma Beta
by Emma Swim Bennett
Connie Collins Givens
Sue Ann Magness
- KATHERINE WEEKS BRIDEWELL**, Oklahoma Alpha
by Judy B. Biondini
- BETTY REITZEL BROCK**, Indiana Gamma
by M. Jean Hackathorn
Morgantown, West Virginia Alumnae Club
- NELLIE BOUSE BURGER**, Arizona Alpha
by Tom & Jan Threlkeld Moore
- NANCY BENNETT BURRELL**, Illinois Zeta
by Barbara Sands Olsen
- VERNON BURROWS**, father of Linda Burrows Priest
by Sarah Ruth Mullis
Jane Landreth Russell
- CHERIE WARD CARAVETTE**, Michigan Gamma
by Sue Kemp August
- ANNA CHITTY**, grandmother of Lynn Partleton Hudy
by Frances DeSimone Becque
- LUCILLE V. CLARKE**, New York Gamma
by Philadelphia-Main Line, Pennsylvania Alumnae Club
- JANICE RASH CLEVELAND**, Indiana Beta
by Bloomington, Indiana Alumnae Club
- ANN FULTON CRESSOR**, Ohio Beta
by Josephine Price Buehner
Judith Emch Hilton
Donna Sell Kohlhepp
Adair Appleton Lazell
Ruth Neel Noble
Marjorie Young Wittich
- PATRICIA CROSBY CROFFEAD**, South Carolina Alpha
by Maurice Gilchrist Semler
- VIRGINIA CARNEY CURRIE**, Kansas Beta
by Ann Harkins Hartman
- NORMA FLEMING CUSICK**, Indiana Beta
by Sarasota-Manatee, Florida Alumnae Club
Jane Hattendorf Scudder
- FREDERICK F. DANNEMILLER**, husband of JoAnne Dilley Dannemiller
by Akron, Ohio Alumnae Club
- BRITA ABRAHAMSON DANNAISON**, Montana Alpha
by Daran & Pamela Lammers deCalesta
- JENNY JONES DEAN**, Ohio Zeta
by Allison Brown McGeough

Pi Beta Phi Foundation

RUTH GOODHOLM DONART, Oklahoma Beta
by Jean Orr Donaldson
Stillwater, Oklahoma Alumnae Club

MARY LOU LANDON DREDGE, Illinois Beta-Delta
by Carlene Nichols Barstow

LYNN PENDLETON DUNDAS, California Zeta
by Diana Litts Fedrick

MARION HARRIS DYER, Oregon Alpha
by William & Frances Cox Ehrman

VIRGINIA SIMMONDS ELSBREE, Tennessee Alpha
by Alpha Book Club of Chattanooga,
Tennessee Alumnae Club

MICHAEL FERNBERG, husband of Patricia
Toth Fernberg

by Roberta Boyd Bragan

CHARLES FERREE, husband of Gayla Velvin Ferree
by Beth van Maanen Beatty
Ann Warmack Brookshire
Nancy Carlock Rogers

LOIS C. FINCH, Texas Alpha
by Carol Brollier Deason

GLORIA MARION FULLER, Connecticut Alpha
by Patricia Confrey Thevenet

GREGG GEIGER, father of Julie Geiger Shannon
by Ruth Neel Noble

WILLIAM NEULL GEIGER, father of Mary
Geiger Lewis

by Columbia, South Carolina Alumnae Club
ANITA GILLUM, mother of Gayle Gillum
Macdiarmid

by New Orleans, Louisiana Alumnae Club

LOUIS GOEHRING, husband of Lydia "Jane"
Chenoweth Goehring, father of Sandra
Goehring Wilson

by Nina Brazell Bass

BRUCE GONSER, father of Diana Gonser Witter
by Marjorie Young Wittich

WILMA FEDDERSEN GRANTHAM, Montana Alpha
by Barbara Keudell Eaton

PATRICIA HERBER GRAVES, Colorado Alpha
by Kelly Swan Bahlburg

Jim & Carrol Herber
Robert & Annette Herber
Margaret Wright Laidlaw
Carolyn Pavletich Lesh

JEANNINE FLETCHER GRAY, Arizona Alpha
by Tom & Jan Threlkeld Moore

KAREN THOMPSON GREENWOOD, Oregon Beta
by Barbara Keudell Eaton
Nancy C. Trogman

THELMA JOHNSON GREIN, mother of Margaret
Green Hilfinger, grandmother of Kathryn
Hilfinger Camp

by Carolyn Lake Yerrick

MARTHA MULL GUTTING, Indiana Beta
by Bergen County, New Jersey
Alumnae Club

FREDERICK HAGEE, husband of Virginia Rose
Hagee

by Elizabeth Bietsch Brizendine

ALIDA HAINKEL, our mother
by Jane Hainkel Drennan
Mary Hainkel Plummer

PATRICIA SHINER HAKES, Colorado Alpha
by Mary Lue Grandbois Moore
Sally Perry Schulenburg

STACY HALL, Kentucky Alpha
by Florence Isert Gans

EVELYN REEVES HARDY, Utah Alpha
by Tuesday Night Bridge Group of
Salt Lake City, Utah

IDA MAY HEATON, Illinois Beta
by Virginia Dawson Walton

KAREN LARAINÉ HENRY, Arkansas Alpha
by Mitzi Walch Cleaver

LOLA LYON HENRY, Missouri Alpha
by Janice Lyon Yates

PATRICIA PRICE HERRICK, California Delta
by Virginia Wood Lee

SADIE CALLEN HINSEY, Iowa Alpha
by Hinsdale-Naperville, Illinois
Alumnae Club

Westchester County, New York
Alumnae Club

ELIZABETH GRAHAM HODGES, Texas Beta
by Nancy Carlock Rogers

HARRIET LAUDER HOPKINS, Illinois Alpha
by Barbara Gesell Lauder

TERRY DONE HOSMAN, Oregon Beta
by Kelly Swan Bahlburg

MARJORIE MATHERS ILIFF, Colorado Beta
by Philadelphia-Main Line, Pennsylvania
Alumnae Club

PAULINE (POLLY) SMITH PEARSON ITEN,
New York Gamma

by Naples, Florida Alumnae Club

PATRICIA HUNT JAMES, Wisconsin Alpha
by Charles & Maxine Trotter Conant

C. R. & Tracey Conant
Robert & Sandra Cox
David & Dawn Whiteley

CATHARINE MCGAULY JESSEN, Alabama Beta
by Ruth Neel Noble

ANNA ATTWATER JONES, Kansas Beta
by Dean & Diane Skaer

ABBY SARGENT NEESE KELLY, Maine Alpha
by Philadelphia-Main Line, Pennsylvania
Alumnae Club

MARY J. KLOTZ, mother of Diane Klotz Wexler
by Carolyn Lake Yerrick

JUNE BILGERE KUHLE, Illinois Eta
by Elizabeth W. Kuhle

VIVIAN HARTH LAGERLOF, California Delta
by Pamela S. Jordan

Los Angeles-Santa Monica, California
Alumnae Club

PATRICIA STODDARD LIEBENOW,
South Dakota Alpha

by Southwest Florida Alumnae Club

CLEAT LITTLEFIELD, husband of Mary Ann
Shepherd Littlefield

by Denton, Texas Alumnae Club
Texas Epsilon Chapter
Texas Epsilon House Corporation

EDNA HEATON DAWSON LOMEN, Illinois Delta
by Virginia Dawson Walton

MARY NORRIS MAGIRL, Illinois Zeta
by Beth van Maanen Beatty

Frances DeSimone Becque
Kay Knittle Brock

Lou Ann Montgomery Carter
Cathy Filson Cooper

Ann Johnson Gunn
Illinois Iota Chapter

Maurine Hager Jones
Adrienne Hiscox Mitchell

Sarah Ruth Mullis
Linda Burrows Priest

Nancy Carlock Rogers
Lois Huston Ross

Jane Landreth Russell
Melissa Dates Schmidt

Vermont Beta Chapter
Lucy Baker Warner

Carol Inge Warren

HARRIET LEE HILLMAN MARKS,
North Dakota Alpha

by Mary Helen Hillman

FLORA DEEN FINLEY MARTIN, Oklahoma Alpha
by Mary Ellis Tack Carrere
Allie Conner Collins

WILBER O. MARTIN, husband of Jean
Charroin Martin

by Palm Springs-Desert Cities, California
Alumnae Club

VERA MOWERY MCANINCH, Kansas Beta
by Penelope Heyl Moss

R. PATRICK MCGUIGAN, husband of

Sally Steele McGuigan

by Aileen Aylsworth Welgan

LINDA BEAL MELLIN, Nebraska Beta

by Christine Pasko Falls

SARAH ODOM MINNING, Washington Beta

by Charles J. Minning

ANNA MARIE MINOR, mother of

Jo Ann Minor Roderick

by Beth van Maanen Beatty

Kay Knittle Brock

Lou Ann Montgomery Carter

Virginia Bland Fry

Ann Johnson Gunn

Maurine Hager Jones

Carolyn Pavletich Lesh

Betty Blades Lofton

Renée Ross Mercer

Adrienne Hiscox Mitchell

Sarah Ruth Mullis

Ann Dudgeon Phy

Linda Burrows Priest

Nancy Carlock Rogers

Lois Huston Ross

Jane Landreth Russell

Melissa Dates Schmidt

Barbara Ehni Van Lusen

Lucy Baker Warner

Carol Inge Warren

MARY PITTMAN MINTER, Texas Beta

by Estee Gregory Rinehart

DONALD MOSS, husband of Vivian Marlow Moss

by Daytona-Ormond Beach, Florida
Alumnae Club

Pi Beta Phi Foundation

ANN STANTON NEE, Kansas Alpha
by Robert & Elinor Frye Hansen

NANCY HARVEY NEWTON, Pennsylvania Alpha
by Daytona-Ormond Beach, Florida
Alumnae Club

DOUGLAS PERRY, husband of Rosemary
Hemmingson Perry
by Nancy Carlock Rogers

RUBY A. PHILSON, mother of
Camilla Philson Humphrey
by The family of Ruby A. Philson

O. EDWARD POLLOCK, husband of
Nancy Blaicher Pollock
by Jean Orr Donaldson
Barbara Sands Olsen

BRANDT POWELL, father of Ashley Powell Sutton
by Ann Warmack Brookshire

JANE VAN MAANEN PRATT, sister of Beth
van Maanen Beatty, aunt of Elizabeth
Ann Beatty & Beverly Beatty Nester
by Pat Tisdale Bell
Roberta Boyd Bragan
Ann Warmack Brookshire
Lou Ann Montgomery Carter
Catherine Nelson Evans
Marilyn Simpson Ford
Patti Hill King
Ruth Neel Noble
Robin McPherson Rohrback
Lois Huston Ross
Jean Wirths Scott
Janice Newsom Tapp

HILDA QUIGLEY, my mother
by Mary Quigley George

MARIAN PORTER REIFF, Kansas Alpha
by Wichita, Kansas Alumnae Club

EVELYN LYON RISDON, Missouri Alpha
by Janice Lyon Yates

CHARLES D. ROSS, husband of Lois Huston Ross
by Janice Kincaid Clifford
Ruth Neel Noble

KATHERINE ANNE SCOTT, Nebraska Beta
by Carla Vincent Mead
Bruce & Sandra Vincent

MARY FERGUSON SHAW, Indiana Delta
by Lawrence & Ann Ferguson Brown
Mary Davidson Craig
Roland Ferguson
Donald L. Shaw

JANE BAGNELL SIEGEL, New York Alpha
by Valerie Siegel Bertoglio

ROBERTA FRENCH SOLHAUG, Washington Beta
by Marilyn Melin Sandberg

NORMA CURTIS STEIGER, Virginia Gamma
by Tucson, Arizona Alumnae Club

NADINE WILSON SUTHERLAND, Wyoming Alpha
by Cape Cod, Massachusetts Carnation
Circle

MILDRED CURRY WUCHER TALBOT, Indiana Beta
by Bloomington, Indiana Alumnae Club

HAYWOOD TURNER, husband of
Reba Sellers Turner
by Patricia Loomis Robinson

ELIZABETH VAN MAANEN, mother of Beth
van Maanen Beatty, grandmother of
Elizabeth Ann Beatty & Beverly Beatty
Nester
by Patricia Emens Anderson
Frances DeSimone Becque
Kay Knittle Brock
Ann Warmack Brookshire
Lou Ann Montgomery Carter
Catherine Nelson Evans
Marilyn Simpson Ford
Virginia Bland Fry
Elizabeth Davenport Garrels
Ann Johnson Gunn
Maurine Hager Jones
Carolyn Pavletich Lesh
Betty Blades Lofton
Renée Ross Mercer
Adrienne Hiscox Mitchell
Sarah Ruth Mullis
Ruth Neel Noble
Ann Dudgeon Phy
Linda Burrows Priest
Jo Ann Minor Roderick
Lois Huston Ross
Jane Landreth Russell
Melissa Dates Schmidt
Janice Newsom Tapp
Barbara Ehni Van Luven
Lucy Baker Warner
Carol Inge Warren

ARLINE MEHNER VOEPEL, Washington Beta
by Tom & Jan Threlkeld Moore
Marcia Perry Nix

SARA WAREHAM WAGGONER, Wisconsin Alpha
by Sharon Parker Algeo
Patricia Emens Anderson
Beth Waggoner Aust
Ron, Sandra & Jeff Barry
Beth van Maanen Beatty
Mr. & Mrs. L. C. Boxhorn
Kay Knittle Brock
Ann Warmack Brookshire
Lou Ann Montgomery Carter
Central Orange County, California
Alumnae Club
Janice Kincaid Clifford
Sally Godbolt Conover
Patricia Wolfe Davis
Mary Joan Morse Dutrisac
Marilyn Simpson Ford
Robert & Sara Goss
Clarence & Mary-Ann Haack
Janet Blume Hamilton
Donald & Sharon Hand
Anne Busch Hills
Tom & Martha Rowe Holler
Jim & Pat Hubin
JoAnn Jones
Maurine Hager Jones
Denver & Sharol Kaufman
Evelyn Peters Kyle
Carolyn Pavletich Lesh
Lyn Wiesenthal Listecki
Betty Blades Lofton

Madison, Wisconsin Alumnae Club
Thomas & Judith Papenfuss Malueg
Joe & Penny White Mayer
Rebecca Hopkins McHolland
Minneapolis, Minnesota Alumnae Club
Edward & Barbara Moersch
Sarah Ruth Mullis
Marcia Perry Nix
Ruth Neel Noble
Barbara Sands Olsen
Kristin Noer Olson
Palm Springs-Desert Cities, California
Alumnae Club
Phoenix, Arizona Alumnae Club
Ann Dudgeon Phy
Nancy Fogle Pollard
Don & Jackie Powell & Family
Phyllis Rasnick
Jo Ann Minor Roderick
Lois Huston Ross
William Rummier
Jane Landreth Russell
Sandra Gerland Schley
Jean Wirths Scott
Stanley & Patricia Siegel
Roger & Linda Burt Sisterman
Southern California Area Council
Adam J. Stone
Lee & Dotha Swan
Mary Moersch Taggart
Nancy C. Trogman
Richard C. Wareham
Carol Inge Warren
Wisconsin Alpha AAC
Kathleen Anderson Witte
Stephanie Leonard Witte

KATHRYN ULRICH WALKER, Oregon Alpha
by Norma Kirkpatrick Griffith
Eleanor Thomas Nye
Roberta Bliss Pittman
Ventura County, California
Alumnae Club

CONNIE PHELPS WANDER, Michigan Alpha
by Claudia Louise Menton

WALTER LEE WEAVER JR., father of
Amy Margaret Weaver
by Carol Inge Warren

LEONORE BROWN WEBB, Washington Beta
by Wilma Siepman Ranney

CATHERINE HEUBECK WELTNER, Maryland Alpha
by Margaret Black Ulle

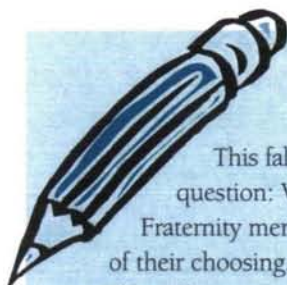
GRACE KELLEY WEST, California Gamma
by Pasadena, California Alumnae Club

MARY TONKENS WILKINSON, Pennsylvania Beta
by Cape Cod, Massachusetts Carnation
Circle

MARY FRANCES (FRAN) PAINE WILLIS,
Idaho Alpha
by Linda Willis Dagg
Ann McIntyre Simmons
Aileen Aylsworth Welgan

MARIAN GIDDINGS WITWER, Michigan Beta
by Valley of the Moon, California
Alumnae Club

Links to Literacy



Links to Literacy Writing Contest

This fall Pi Beta Phi sponsored the third annual Links to Literacy Writing Contest. The contest posed the question: What has your involvement in Links to Literacy taught you?

Fraternity members, collegiate and alumnae, were asked to submit poems, essays, short stories or any other genre of their choosing. Works were judged on originality, creativity, writing style and response to the question.

The collegiate winning entry, "Endless Possibilities," is by Texas Zeta Marissa Mariner and the alumnae winning entry, "Literacy Beyond Words," is by former Carolyn Helman Lichtenberg Crest Award Winner Indiana Alpha Betty Reed Packard-Voris.

"Endless Possibilities"

"Give a man a fish, feed him for a day. Teach a man to fish, feed him for a lifetime."

The possibilities are endless
For little ones and old ones
Who try to make it through
But stumble on the words
Ones that mean so much
So much to me and you.
Pi Phi women,
Angels who bring light
If we take the time
Just an hour or two
Turn the stumbling blocks
To stepping stones,
Make a future brighter
Make an elder wiser,
If we seize this call
Teach those set before us
They will read for a lifetime
A lifetime of endless possibilities.

"Literacy Beyond Words"

With every click of the camera, the youthful smiles radiated everywhere. As each fourth grader posed for their Polaroid picture, "Ohhh," one would squeal. "Let me see; let me see." Except for one shy girl who winced with each flash of the camera, this was the highlight of the luncheon. Her hand covered her eyes and embarrassment at the thought of a picture. "But I'm so ugly," she volunteered.

It was time for solidarity. One by one a Pi Phi would tell this child how special she was; how pretty she was; how pleased they were to meet her. By the end of the picture-taking session, she had progressed from no self-image to a sense of hesitant pride. She allowed her picture to be taken.

The students, mostly underprivileged and many new immigrants, were awed by this wondrous change in their routine. Pizzas for lunch. Served by these old but kindly women.

Now the ultimate: their very own book to take home with their picture. They even got to choose the book. Boys were quick to choose those about sports; beautiful picture books captivated those still struggling to learn English; and many of the young girls were fascinated by family and friend-oriented books. There was exciting clamor as each triumphantly showed friends their new possession. Several of the students hugged Pi Phis, eager to show their appreciation. Some even asked if they could be pen pals; addresses were eagerly exchanged.

Suddenly it was over. The bell rang. Time to return to reality and another class. Grabbing their books, the students ran for the door.

"Thanks," they screamed. "Thank you, thank you!" The shyest of the shy ran back. "Thank you," she whispered while tears rimmed her eyes. With careful deliberation, she positioned her picture between the pages of her new book and, hugging it to her chest, slipped out the door. If she had turned around, she would have glimpsed Pi Phis choking back private tears.

Literacy is about more than collecting books or encouraging reading. It is also about instilling pride, sharing compassion, and making new friends ... even if they do think you are old.

Seventy-five-Year Members

ESTELLE FARLEY BEHAN

Illinois Epsilon
Sedro Woolley, Washington

DORIS DUNSMOOR BELL

California Gamma
Arcadia, California

LYDIA BLOEDORN BIRKLE

Colorado Beta
Denver, Colorado

WINIFRED TEACHOUT BOUVET

Vermont Beta
Montpelier, Vermont

ELEANOR JACKSON BRENTON

Vermont Alpha
Wilbraham, Massachusetts

KATHLEEN WILLIAMS CAMPBELL

Virginia Alpha
Dallas, Texas

MARY ATKINSON CARDOT

Missouri Gamma
Edwardsville, Kansas

FRANCES LAWSON CHURCHMAN

New York Delta
Richmond, Virginia

RUTH MCCAULEY CLYDE

Pennsylvania Alpha
Newtown Square, Pennsylvania

HELEN CORNWELL COPELAND

Montana Alpha
Portland, Oregon

HELEN MEREDITH DICKSON

Missouri Alpha
St. Louis, Missouri

PRISCILLA EAKIN DUNCAN

Oregon Alpha
Seattle, Washington

ALICE JUDSON FISHER

Iowa Beta
Boone, Iowa

HORTENSE GEHRING

Illinois Beta
Knoxville, Illinois

LUELLA CRUM GILL

Texas Beta
New York, New York

FRANCES MARIAN BOSSEMAYER GOFF

Arkansas Alpha
Valley Mills, Texas

HELEN HOBBS HAWKINS

Iowa Alpha
Mount Pleasant, Iowa

RUTH BARKER HUGHES

Maryland Alpha
Lockport, New York

ELLEN HUDSON JONES

Indiana Delta
North Palm Beach, Florida

ETHEL POLLARD KRAUSE

Wisconsin Beta
Bismarck, North Dakota

MADELEINE CLOSS LAFON

Missouri Beta
St. Louis, Missouri

DOROTHY DELZELL LEWIS

Oregon Alpha
Boulder, Colorado

KATHARINE KIBLER LYONS

Kansas Alpha
Kansas City, Missouri

JANE GASTON MAHLER

Wisconsin Alpha
Summerville, South Carolina

MARION PARKER MARVIN

Vermont Beta
Shelburne, Vermont

MARGARET PATTERSON MATTESON

Iowa Beta
Wilmington, Delaware

EDITH BROWN MCKENZIE

Illinois Delta
Sun City, Arizona

CAROL CROWE METCALFE

Missouri Beta
St. Louis, Missouri

EVA JANE WILSON NIXON

Idaho Alpha
Mesa, Arizona

MARGARET JONES ORMOND

North Carolina Alpha
Ayden, North Carolina

MAURINE BROCK PLUMB

Illinois Eta
San Diego, California

JEANNE MISNER POPE

Nevada Alpha
Vallejo, California

CATHERINE MCCULLOUGH POTTS

Pennsylvania Delta
Pittsburgh, Pennsylvania

MILDRED SEARS RAILSBACK

Indiana Alpha
Redwood City, California

MARY HALL ROBINSON

Nebraska Beta
Lincoln, Nebraska

GLADYS BAXTER ROSS

Illinois Zeta
Rockford, Illinois

ELLA JOHNSON SCOTT

Colorado Alpha
St. Louis, Missouri

ELIZABETH MORTON STEHLIN

Missouri Beta
Atlanta, Georgia

MARY ROBINSON SUGGS

Texas Alpha
Dallas, Texas

MAE KELLER WEISS

Michigan Beta
Memphis, Tennessee

HARRIETT ROSS WRIGHT

Oregon Alpha
Beaverton, Oregon



Alumnae News



The Baton Rouge, Louisiana Alumnae Club helped local seventh graders paint a downtown mural depicting their idea of Baton Rouge in 2020. The mural is a permanent exhibit used at all downtown celebrations on the Mississippi River levee, including the Fourth of July. At a dedication ceremony, Baton Rouge's mayor pro tem recognized the Pi Phi women as a primary volunteer group, saying the Greek system was all about giving back to the community.

The MARYLAND/D.C. SUBURBAN ALUMNAE CLUB held a Sisterhood Celebration tea at Kansas Alpha Lisa Evans Tuchtan's home. Since the tea took place during the holiday break, alumnae and area undergraduate members attended. During the tea, the group held an angel ornament exchange.

OHIO DELTA KATHLEEN MELLING RICE was recently named Bedford, Ohio's Teacher of the Year. Kathleen teaches first and second grade, and developed a full-day kindergarten and a transitional, first-grade program.

TEXAS GAMMA FRANCES WESTBROOK OWENS was recently featured in the *Denver Post*. She became Colorado's first lady, when her husband, Bill Owens, became the state's governor. Colorado Beta Beatrice Miller Romer, one of Colorado's previous first ladies, was also a Pi Phi.

LOUISIANA BETA CAROLYN COLEMAN RILEY and INDIANA BETA ALICE THORN FINNEY played sisters-in-law in the play "The Man Who Came to Dinner" at the Harlequin Dinner Theatre in San Antonio, Texas.

Edenton, North Carolina honored NORTH CAROLINA ALPHA ELIZABETH VANN MOORE for her life-long commitment to and achievements in historic preservation. Edenton's mayor declared that one day per year would be set aside as Elizabeth Vann Moore Day. A fund to further investigation and preservation of accurate history was also created in her name.

TEXAS BETA ANGELA DORSEY YATES is the Assistant District Attorney in Domestic Violence Court in Memphis, Tennessee. Angela graduated from the University of Memphis Law School in 1998 and is a member of the Tennessee Bar.

BELLEVUE-EASTSIDE, WASHINGTON ALUMNAE CLUB members enjoyed learning ways to research their family history at a recent club meeting held at the Bellevue Public Library. Marty Gale from the Eastside Genealogical Society taught club members how to use Web sites and community resources to find family information.

During its second meeting, the newly-chartered MOSCOW, IDAHO ALUMNAE CLUB enjoyed a Cookie Shine with Idaho Alpha members.

The TEXARKANA, ARKANSAS-TEXAS ALUMNAE CLUB held its annual Angel Exchange at Arkansas Alpha Mary Collom Fore's home. Guests included collegians and their mothers.

In 1934, eight CHAMPAIGN-URBANA, ILLINOIS ALUMNAE CLUB members formed a bimonthly dessert and bridge group. Throughout the years, the bridge group has flourished and has developed into a 16-member luncheon and bridge group, still meeting bimonthly. Two of the founding bridge-playing members, Illinois Zetas Helen Porterfield White, initiated in 1929, and Beth Olwin Dawson initiated in 1930, are still active in the group.

TEXAS ALPHA GAY WARREN GADDIS' Austin-based marketing firm, T3, has recently purchased the Rio Grande Street mansion, which houses the firm, and two historic buildings behind and adjacent to it. The T3 campus will foster the agency's continuing growth.

Last April, 15 to 20 IOWA ZETAS from the 1949 to 1951 pledge classes gathered in Charleston, South Carolina for a Cookie Shine in '99.

The NORTHERN VIRGINIA ALUMNAE CLUB held its annual fund-raiser, which was entitled April in Paris. Proceeds from the night benefitted The Reading Connection, the Northern Virginia Alumnae Club Graduate Tuition Scholarship, the Pi Beta Phi Foundation, and the Northern Virginia Alumnae Club foundation.

INDIANA ZETA KARI BOWIE HERTEL is Ohio Senator Voinovich's Legislative Counsel in Washington, D.C. She and her husband live in Columbus, Ohio.



OKLAHOMA ALPHA NANCY

JOHNSTON RECORDS is a member of the Fred Jones Jr. Museum of Art Board of Visitors and the Oklahoma University Institute for Breast Health. She helped endow faculty chairmen at the university in the Michael F. Price College of Business and the obstetrics and gynecology program at the Health Sciences Center.

ILLINOIS ZETA JULIE FREISCHLAG is the first and only woman in the United States to be chief of vascular surgery. Recently, Julie was appointed to this position at the UCLA School of Medicine, where she completed her residency in the early '80s. Julie was also named director of UCLA's Gonda Goldschmied Vascular Center, and her outstanding accomplishments were featured in several area papers including the *Westside Weekly*, a supplement to the *Los Angeles Times*.

The ABWA honored **KANSAS ALPHA NANCY JASPERSON PERRY** at its 1999 scholarship luncheon, which raised funds for women pursuing a degree at Washburn University. In the 1970s and 1980s, Nancy hosted the Romper Room television program and conducted a talk show concerning everything from cooking to current events. Currently, Nancy is the president and CEO for the United Way of Greater Topeka. Nancy was honored at the luncheon for her achievements as a business woman, volunteer and civic leader.

This past year, the **INDIANA BETA** pledge class of 1958 gathered in Bloomington, Indiana to celebrate their 40th Anniversary.



During their Founders' Day brunch, the **CHAMPAIGN-URBANA ALUMNAE CLUB** held a book drive for the new Angel Library at Matthew House, a daytime refuge for five- to 18-year-old children.

PENNSYLVANIA ETA BARBARA HAWS DEMI is a new member of the Conference of Consulting Actuaries. Barbara, who is a consulting pension actuary in Jacksonville, Florida, is an Associate of the Society of Actuaries, an American Academy of Actuaries member and an Enrolled Actuary under ERISA. In addition to being Jacksonville, Florida's Alumnae Club President, Barbara is on United Way of Northeast Florida's Finance Committee, an active parishioner at St. Joseph's Catholic Church and the mother of two.

Two years ago, **NEBRASKA BETA KAREN DUNNING** sold her multimillion dollar projector/computer supply company in Lincoln, Nebraska and began to pursue an acting career. She believed women were not being portrayed realistically in movies or television programs, and she thought she could be a positive influence in the entertainment business. Karen has been an extra on "Chicago Hope," "ER," "LA Doctors" and "Maggie." She has also been an extra in movies starring Steve Martin, Eddie Murphy, Bruce Willis and Michelle Pfeiffer. After three months, Karen was accepted into the Screen Actors Guild, a process which usually takes a year and a half. She is now working on hiring an agent and auditioning for roles, while taking acting classes and voice lessons.



ABOVE LEFT: The Indianapolis, Indiana Alumnae Club held its annual holiday luncheon at the Meridian Hills Country Club. Fifty-five members attended the event, where Texas Zeta Julie Zook Musser shared decorating, custom furniture and accessory ideas for children based on her business Just Kidding Interiors. Club members also collected books for their Reach Out and Read program. The program provides new books for children, 6-months to 5-years, on their "well" visits to a local clinic.

ABOVE CENTER: Texas Alpha Ann Dudgeon Phy and Texas Beta Sam Whitelock Mauldin attended the Dallas Alumnae Club's annual Tasting Bee and recipe collection sale benefiting the collegiate chapters. Oklahoma Alpha Margaret Lee Harder and Texas Alpha Kay Bailey Hutchison were just two of the many alumnae who submitted recipes for the event.

ABOVE: Oklahoma Beta Rosemary Patten Herzig was thrilled when her daughters Jane Ellen Herzig Benson and Barbara Herzig Benson become Oklahoma Betas. Last fall, Katherine Benson, Barb's daughter and Rosemary's granddaughter, was initiated at Oklahoma Beta.

Emory University's Women's Center selected **ARIZONA ALPHA CAMERON WELBORN** to receive its 1999 Unsung Heroine Award in the graduate student category. Cameron, an Emory law student, received the award based on her work to update Georgia's antiquated rape statute by proposing a bill she and two fellow students drafted last fall.



Illinois Epsilon Jean Evans Jones spoke to the Denver, Colorado Alumnae Club about the importance of women's organizations and their role in female leadership development. Jean is a past president of the club and has served the Denver community as the Executive Director of the Girl Scouts Mile Hi Council, president of the Women's Forum of Colorado, previous president and first woman member of the Denver Rotary Club, and past chairman of the Colorado Civil Rights Commission.

Sixty-one years ago, a group of Pi Phis began the Beta Book Club in Chatanooga, Tennessee. Twenty to 25 women gather the last Saturday of every month to discuss books they have read and to share their latest personal news with each other. The club is one of the oldest book clubs in Chatanooga.

The **MONTEREY PENINSULA, CALIFORNIA ALUMNAE CLUB** held a Christmas Party and Cookie Shine at the Monterey Plaza Hotel. Approximately 20 attendees enjoyed lunch while interacting with their special guest, Alumnae Province President Patricia Getto Plumlee.

The **CYPRESS CREEK NORTHWEST HOUSTON ALUMNAE CLUB** recently held a Golden Arrow luncheon for their nine Golden Arrows. After a short introduction highlighting the college days and the recent accomplishments of each Golden Arrow, the group enjoyed lunch at a local restaurant.

Twenty-three **TEXAS ZETAS** from the 1989 pledge class gathered for a 10-year reunion in Dallas, Texas last January. During the weekend, everyone received a memories book containing each pledge class member's favorite college memory and updated personal information.

In 1996 the **HOUSTON, TEXAS ALUMNAE CLUB** collaborated with the University of Texas M.D. Anderson Cancer Center to create the Pi Beta Phi Children's Enrichment Program at M.D. Anderson Cancer Center in Houston, Texas. The program's goals are to insure that every child is computer literate, to enhance the literacy of children whose learning skills have been compromised by cancer and its therapy, and to provide regular and gifted children the chance to excel academically. Now the club is able to support the program through volunteering, interacting with the children and providing valuable learning aids such as CD-Roms, an electronic world globe and books.

NORTHERN NEW JERSEY ALUMNAE CLUB members hold an annual meeting dedicated to creating a craft. This year members made their own fabric-covered bulletin boards.

The **SLIDELL, LOUISIANA ALUMNAE CLUB** celebrated the holidays with a Holiday Tea.

During the year, **BOSTONIAN, MASSACHUSETTS ALUMNAE CLUB** members participated in activities including the Annual Walk for Breast Cancer, a fall potluck to welcome new club members, a workshop on stained glass, a Yankee-style gift exchange and dinner at Paparazzi's, a local restaurant. Club members also held an auction with proceeds benefitting the New England Home for Little Wanderers, and took time to organize books in the home's library.

To celebrate Presidents' Month, **TULSA, OKLAHOMA ALUMNAE CLUB** members honored their past club presidents at their February meeting. Twenty-two past presidents attended, including two presidents in their 80s.

The Board of the Presbyterian Intercommunity Hospital of Whittier, California honored **OHIO ALPHA PATRICIA LENHART SCHEIFLY** for her dedicated service to community organizations. Patricia has been a member of the hospital's Foundation Board for 10 years, and the board has chosen to name a new hospital building The Patricia L. Scheifly Breast Health Center. Patricia has also been a loyal and dedicated member of the Whittier Area Alumnae Club, which she helped charter in 1958.

OKLAHOMA ALPHA JENONNE WALKER has served as the U.S. ambassador to the Czech Republic for the last three years. Previously, she worked for the Central Intelligence Agency as an analyst for Western European affairs and for the State Department policy planning staff. Jenonne has also accepted a position with the World Monuments Fund, a New York non-profit group.



From Pi Phi Pens



SOUTH DAKOTA ALPHA KAREN FREIBERG MUSOLF wrote a book, "From Plymouth to Parliament," about Nancy Astor, the first woman to take a seat in the British House of Commons. It is the first in-depth exploration of Astor's initial parliamentary campaign in 1919. The book is said to be a highly readable, engaging work that tells the story of the pathbreaking campaign that launched the career of one of the most popular politicians of our century. Karen is an independent scholar living in Breckenridge, Colorado. She has taught at the University of Minnesota and Macalester College, and studied in England as a Fulbright Scholar.

IOWA GAMMA DOROTHY ROOST BATES and her son Albert K. Bates, an attorney and environmentalist, are co-authors of the newly published "Y2K Survival Guide and Cookbook." The book covers planning for the millennium to coping with emergencies in general. Dorothy has written nine books and is a member of the International Association of Culinary Professionals.

When **OKLAHOMA BETA JANICE WORTHINGTON LISKO's** toddler son began talking, Janice began jotting down his profound and hilarious phrases. Now her son is 10, and Janice wrote a book to help other parents record their children's funny quips. The book, which is a journal that includes a quote from her son on every page, is entitled "The Cutest Things My Children Say!" The book can be purchased at www.bluebird1.com or by calling (888) 672-2275.

KANSAS ALPHA SUSAN MCBRIDE recently wrote her first novel "And Then She was Gone." The book was named the winner of Mayhaven Publishing's 1997 Award for Fiction, the winner of the National Writers Association's Best Novel Contest and a finalist in St. Martin's Best First Traditional Mystery Novel Contest. The novel's official publishing date is in May.

ABOVE LEFT: The Board of Directors of Hays Medical Center met for a Planning Retreat. Of the 18 women present, six were Pi Phis. Kansas Alpha Ann Horton Jeter, Kansas Betas Carol Bates Eddy and Karen Lister Cook and Kansas Alpha Nancy Suellentrop Curtis are standing with internationally known heart surgeon Dr. Michael DeBakey. He pioneered open heart surgery and has served as an advisor to every U.S. president over the past 50 years. He will be assisting Hays Medical Center in establishing a new heart center institute to promote the prevention of heart disease in western Kansas.

ABOVE CENTER: At the annual Panhellenic luncheon held at the Pendennis Club in downtown Louisville, the Louisville, Kentucky Alumnae Club President, Kentucky Alpha Elisabeth Long Young, was named the Louisville City Panhellenic Outstanding Alumna of the Year. Kentucky Alpha Annemarie Long Wilson, Elisabeth's sister, and Kentucky Alpha Thelma Knebelkamp Long, Elisabeth's 95-year-old grandmother attended the event. Thelma is one of Kentucky Alpha's charter members. Here she enjoys the luncheon with Kentucky Alpha Lea Metzmeier.

ABOVE: The Valley of the Moon Alumnae Club adopted the California Iota chapter. Club members send the collegians midterm and finals goodies and items for the chapter house. Recently, two collegiate members attended an alumnae club meeting so club members and collegiate members could become even better acquainted.



The Kansas Music Educators Association recently named Kansas Beta Anita Swain Allard Kansas Honor Administrator of the Year. The association gave this award to Anita, who is the principal at Stanley Elementary in Wichita, Kansas, at its recent state workshop.

In Memoriam

Alabama Alpha

MARY JOHNSON BRADFORD, 1929;
September 1998
VIRGINIA HICKS SUTTER, 1927;
December 1998

Arizona Alpha

JEANNINE FLETCHER GRAY, 1997;
February 1999
DORIS DAYTON MCCORD, 1941;
December 1998
DOROTHY INGRAM RUTTER, 1944;
December 1998

Arkansas Alpha

MARY JANE STORMONT BARLOW, 1942;
January 1999
HELEN HOFMANN FRY, 1933; December 1998
ELIZABETH PAISLEY HUCKABY, 1924;
March 1999

California Beta

ELEANOR BREED DUMM, 1931;
December 1998

California Delta

PATRICIA PRICE HERRICK, 1943;
December 1998
VIVIAN HARTH LAGERLOF, 1939;
February 1999
MARTHA PIRIE MOULENBELT, 1960;
March 1999
MARY CAMPBELL SEBRING, 1930;
September 1998

Colorado Alpha

VIRGINIA MACKINTOSH ALDRICH, 1932;
October 1998
JUDITH GRAHAM, 1950; January 1999
GEORGIA HIRST LEARD, 1919; July 1998
JEANETTE PARKER REILLY, 1926; January 1999

Colorado Beta

BERNICE MARTIN HEITZNER, 1934;
October 1998

Connecticut Alpha

MARILYN MATHER CZEPIEL, 1951;
January 1999
GLORIA MARION FULLER, 1943;
December 1998

D.C. Alpha

CHARLOTTE PATTERSON PUSEY, 1940;
March 1999

Florida Beta

JEAN ROWE BAGBY, 1928; October 1998
MARGARET CHACE COLE, 1928;
November 1998
ANNE CARTER FUNK, 1946; February 1999
ELINOR ESTES MILLER, 1931 affiliated
Florida Gamma; January 1999
FRANCES LURVEY SALMON, 1932; June 1998
JACQUITA JONES TERRIER, 1946;
February 1999
POLLY WHITE TURMAN, 1936; March 1999

Florida Gamma

MARY HALL HENDRICKSON, 1929; March 1999
JANE THAYER MACGAFFIN, 1933;
October 1998

Georgia Alpha

FRANCES CANNON WRIGHT, 1941; July 1998

Idaho Alpha

NELLIE IRWIN MACGREGOR, 1932;
December 1998
FRANCES WENDLE MILLER, 1926;
February 1999
MARY FRANCES (FRAN) PAINE WILLIS, 1935;
February 1999

Illinois Alpha

HARRIET LAUDER HOPKINS, 1941, affiliated
Illinois Zeta; February 1999

Illinois Beta-Delta

MARION YEOMAN BAKER, 1934; February 1999
ELIZABETH OSBORN LACEY, 1936;
February 1998
MARY TURNER LUDWIG, 1937;
December 1998

Illinois Epsilon

JEAN LASHER GREGORY, 1959; April 1998

Illinois Zeta

ANN WAYLAND BLAIR, 1939; January 1999
NANCY BENNETT BURRELL, 1948;
January 1999
LUCILLE TRIEBEL IRELAND, 1928;
October 1998
MARY NORRIS MAgirl, 1927; January 1999
DOROTHY DAVIS OWEN, 1939; December
1998
RUTH BUCHHOLZ TURNBULL, 1936;
January 1999

Illinois Eta

JUNE BILGERE KUHLE, 1941; January 1999

Illinois Theta

FRANCES ROECKER EAGLESON, 1948,
February 1999
DONNA SCHAFER JOHNSON, 1947;
February 1999
JEAN CLATFELTER SCHEFFLER, 1947;
September 1998
BETTY BARCLAY WEST, 1947; January 1999

Indiana Alpha

MARY GENE WIESMAN BROCK, 1943;
December 1998
MARTHA DRYBREAD DEPPE, 1934;
January 1999
LELLA KELLY, 1923; January 1999
REBECCA ABBETT LEWIS, 1942; April 1998
EUNICE WHITE MCKINNEY, 1922;
November 1998

Indiana Beta

NORMA FLEMING CUSICK, 1953;
November 1998
PATRICIA SCOTT EDWARDS, 1957;
November 1998
ELIZABETH WARREN HUDSON, 1932;
January 1999
MARGARET A. TORPHY, 1939; February 1999

Indiana Gamma

BETTY REITZEL BROCK, 1943; October 1998
GERALDINE JOHNSON DEHART, 1935;
January 1999
ELIZABETH MCCrackEN EWING, 1931;
December 1998
PHYLLIS PENNINGTON SLAUGHTER, 1939;
December 1998
JENNIFER JACKSON WETZEL, 1976;
January 1999

Due to space limitations, it is a policy of The ARROW to not print obituaries in the magazine.

There is one exception, upon the death of a former Grand President. We would love to print small obituaries about each of our members, but unfortunately, there isn't space. The one section in each ARROW devoted to those who have passed away, is our In Memoriam section.

Initiation year and month and year of death follow each member's name. When submitting death notices to Central Office, please give month and year of death. Names cannot be listed without this information.

Indiana Delta

ONDA WARNOCK DELASKI, 1921; August 1998
NADINE MUENTZER KING, 1934; August 1998
MARY FERGUSON SHAW, 1950; January 1999

Iowa Beta

KATHERINE HILMER ADDISON, 1923;
February 1999
REBEKAH BEYMER HUFSTADER, 1925;
January 1999

Iowa Gamma

SUSAN WILLIS HEIBERGER, 1956, affiliated
Colorado Alpha; October 1998
SHIRLEY L. WELLS, 1928; December 1998

Iowa Zeta

JANE PONTIUS DUTCHER, 1929; March 1999
DORIS DAYTON JONES, 1922; December 1998
LOUISE MCCOY LOOMIS, 1945;
December 1998
MARY REEDQUIST REQUA, 1953;
December 1998
BETTY JEAN (B. J.) HOEGH SCHUKEI, 1946;
March 1999

Kansas Alpha

RUTH McDOWELL CLARK, 1920;
November 1998
VIRGINIA EDWARDS HARDING, 1933;
January 1999
BARBARA MIZE MILLER, 1930; February 1999
CONSTANCE COBERLY TWEITO, 1961;
February 1999
BARBARA BENTON WESCOE, 1942;
November 1998

Kansas Beta

ETHELINDA PARRISH AMOS, 1942;
September 1998
DOROTHY KENDALL SMITH, 1928; May 1998

Kentucky Alpha

PHYLLIS PAYNE DILLON, 1951; December 1998
GERTRUDE VOGT DONOGHOE, 1928;
March 1999
STACY HALL, 1937; January 1999
SARAH STITES HENDON, 1931;
September 1998

Louisiana Alpha

MONTINE MCDANIEL FREEMAN, 1934;
December 1998
MARY ALPAUGH MCILHENNY, 1939;
August 1998
LETITIA WOOD SADLER, 1923; August 1998

Louisiana Beta

VIRGINIA NORFLEET SIBLEY, 1949;
February 1999

Maine Alpha

ABBY SARGENT KELLY, 1930; January 1999

Maryland Alpha

FRANCES BREWER RANKIN, 1923, affiliated
Missouri Alpha; June 1998
CATHERINE HEUBECK WELTNER, 1942;
February 1999

Michigan Alpha

ELEANOR WEAVER DINGMAN, 1943;
February 1999
SALLY THOMAS KREAMELMEYER, 1938;
February 1999
CONNIE PHELPS WANDER, 1973; May 1998

Michigan Beta

VIRGINIA BELL MILLER, 1933; November 1998
GRETA WALLINGTON SMITH, 1928;
January 1999

Michigan Gamma

JULIA MACKAY DOYAL, 1945; January 1999

Mississippi Beta

DENA KATHERINE TODD, 1998;
December 1998

Missouri Alpha

KARLA RENEE BAUER, 1996; November 1998
LOLA LYON HENRY, 1942; February 1999
ALLENE SNYDER LOVE, 1943; March 1999
ZOA WHITE MCGEE, 1927; December 1998

Missouri Beta

JANE ALGER CRIDER, 1934; July 1998
BETTY CLAY CUNNINGHAM, 1945;
February 1999
NELL ANDERSON MARTING, 1943; March 1999

Montana Alpha

EDITH WATERMAN ANDERSON, 1930;
March 1999
BRITA ABRAHAMSON DAVIDSON, 1989;
December 1998

Nebraska Beta

CORINNE HAMMOND GRAY, 1941;
February 1999
VIRGINIA BECKER GRIFFIN, 1925;
October 1998

Nevada Alpha

GRACE BORDEWICH, 1928; March 1999
SISTER MARGARET P. MCCARRAN, 1923;
December 1998

New York Alpha

DORIS McHALE OWENS, 1937; October 1998

New York Gamma

PAULINE (POLLY) SMITH PEARSON ITEN, 1918;
February 1999
MARGARET LENNOX, 1943; August 1998

North Carolina Alpha

MARILYN McRAE BILYEU, 1945; January 1999
ARDIS KIPP COHOON, 1942; March 1999
ALICE CARR MILLER, 1931; November 1998
MARGARET JONES ORMOND, 1924;
February 1999
LELIA GRADY RAINEY, 1944; December 1998

North Dakota Alpha

PHYLLIS OSMER HERMES, 1960; July 1998
HELEN BOWMAN JACOBSEN, 1923;
February 1999
CLEO NELSON JOHNSTON, 1936;
December 1998

Ohio Alpha

DORIS NAZOR ALEXANDER, 1919; March 1999
BETTY SMITH HAFLEY, 1940; January 1999
WILMA BOLON DAVIS MECHEM, 1925;
December 1998
KATHRYN McCABE SCOTT, 1947;
December 1998

In Memoriam

Ohio Beta

MARGARET WEINLAND BROOKER, 1926;
November 1998
CHARLOTTE WORRELL LEMON, 1928;
February 1999
MILDRED BAKER SHIVELY, 1920; March 1998
MARTHA COHAGEN STANHOPE, 1939;
February 1999

Ohio Delta

MARTHA O'NEIL NEISWANDER, 1930;
March 1999

Ohio Epsilon

JANE WALKER BOTSFORD, 1974;
December 1998
CAROL SMITH PETERS, 1957; February 1999

Oklahoma Alpha

LEKATHRIN OZBIRN BOND, 1942;
January 1999
NAN LENSGRAF COPELAND, 1968; June 1998
ALLECE LOCKE GARRARD, 1928; March 1999
DOROTHY STANDIFER LUDLUM, 1932;
January 1999
CATHERINE CLONTS MARION, 1936;
February 1999
FLORA FINLEY MARTIN, 1937; March 1999
MARGARET MARTIN MCCANN, 1929;
January 1999
PATRICIA BURNS OLSON, 1946; February 1999
JUANITA WRIGHT STOUTZ, 1921; January 1999

Oklahoma Beta

GRACE STEWART GIBSON, 1947; January 1999

Ontario Alpha

ISOBEL WELLS HUFFMAN, 1928; March 1999
MARGARET E. ROBINSON, 1928; January 1999

Ontario Beta

MARION MCCOLL RUSTON, 1935;
December 1998

Oregon Alpha

MARGARET CUMMINGS REEVES, 1928;
December 1998
KATHRYN ULRICH WALKER, 1924;
February 1999

Oregon Beta

NINA ROBISON GREGORY-KINNEY, 1969;
November 1998
MARGARET MILLIKEN, 1941; October 1998
OPAL COLE PANNELL, 1931; March 1999
EVELYN KING RUEGG, 1938; November 1998

Pennsylvania Beta

MARTHA LININGER HAMLIN, 1939;
January 1999

Pennsylvania Gamma

JOYCE SETO SMITH, 1953; January 1999

South Dakota Alpha

HAZEL CONWAY, 1927; March 1999

Tennessee Alpha

MARTHA FLETCHER COX, 1935;
November 1998
VIRGINIA SIMMONDS ELSBREE, 1927;
December 1998

Tennessee Gamma

MARIAN GRUBB HUTSON, 1953; August 1998

Texas Alpha

MARY WATSON CAREY, 1931; December 1998
JOSEPHINE HUTSON GRAHAM, 1932;
January 1999
MARY THORNTON JOSEPH, 1933;
November 1998
BETTIE McDAVID REHMANN, 1934;
February 1999
LINDA ROBERTS SOMERVILLE, 1976;
January 1999
PEGGY KREISLE STRAW, 1937; March 1999
ADELE HOWIE WEAVER, 1932; January 1999

Texas Beta

VIRGINIA SMITH BARWICK, 1944;
December 1998
GRETA GRIFFIN HOLDER, 1947; March 1999
MARY PITTMAN MINTER, 1932;
December 1998
BARBARA GROVES PASCHALL, 1946;
January 1999

Texas Gamma

JOANNE MARSH RHEA, 1953; March 1999

Utah Alpha

EVELYN REEVES HARDY, 1929; December 1998
ANNE MARIE JAHRIES SLEATER, 1987;
January 1999

Virginia Alpha

JO ANNA BUTT BURKE, 1954, affiliated Texas
Beta; February 1998
KATHERINE DAVIS DAVIDSON, 1937;
December 1998

Virginia Gamma

EDYTHE MARSH TRAYLOR, 1943;
September 1998

Washington Beta

ELIZABETH GREEN ENGSTROM, 1927;
November 1998
BETTEE SETTLE KALBERG, 1936;
November 1998

Washington Gamma

DORIS NISONGER MCKONIC, 1948;
December 1998

West Virginia Alpha

MARY FISHER WALLACE, 1943; February 1998

West Virginia Beta

VIRGINIA SNYDER SMITH, 1950;
December 1998

Wisconsin Alpha

ANNE PIDCOE IGOU, 1950; November 1998

Wisconsin Beta

KAREN DICKEY JOHNSON, 1957;
November 1998
DOROTHY VALE KISSINGER, 1936; March 1999
MAYBETH QUINLAN, 1938; December 1998

Wyoming Alpha

CAROLA ROWLAND CAMPBELL, 1956;
March 1999
MARGARET LYNN PRIAL, 1933; October 1998
NADINE WILSON SUTHERLAND, 1939;
January 1999

Fraternity

News & Notes

The Collegiate Connection

This is the second in a continuing column highlighting the support and dedication of Alumnae Advisory Committee and Chapter House Corporation members.

"Pi Phi is our home away from home ... a very special place to be." For more than 500 House Corporation Board members there is no greater compliment our collegiate women can give.

All House Corporations are incorporated under the state or province laws where they are located. Their general duties include leasing and insuring chapter property, as well as hiring house employees. This is where the similarities end and the differences begin. As each chapter has its own personality, so does each Chapter House Corporation. The hardworking and dedicated women of House Corporation Boards often find themselves in roles as problem solvers, decorators, "handy" women, budget stretchers, contractors, cost efficiency experts and friends. They are diligently working to protect and maintain Pi Phi assets and are the "glue" that keeps everything running smoothly. With House Corporation's special touches, our collegians enjoy facilities that are not only comfortable, but safe and technologically current.

Each spring, nominations for the Sara Shipley Bowers Award provide a special opportunity to recognize these loyal and dedicated women who so willingly share their time and talents with our collegians. Our co-winners from last year could not have had more different challenges, and at the same time, be classified as doing the same job.

Illinois Theta Phyllis Biebel Nielsen, Iowa Gamma Jane Williams Criswell and California Epsilon Holly Nielsen Russ, all members of the California Zeta House Corporation, faced the El Nino rains that caused a roof leak, which resulted in the eventual cave-in of the dining room. Their agenda additionally included exterior painting and the design and implementation of a state-of-the-art, in-house computer facility known as Arrowmont Arcade. This facility is equipped with Internet access and linked to campus programs. These House Corporation members have accepted the challenges and "weathered the storms" to ensure a comfortable home for this chapter.

At the same time, the Illinois Epsilon Board, consisting of Illinois Eta Melissa Bilyeu Naughton, Illinois Eta Suzanne Gill Kriz, Louisiana Alpha Judy Obrien Lague, Illinois Eta Heather Lisk Rakosnik and Michigan Gamma Nicole Zubeck, pursued quite a different set of challenges. This board worked diligently to modernize and reorganize its records. They conducted an extensive reassessment of all documentation and developed an updated inventory procedure, which is now in place. These members are very innovative and their complete long-range planning is in effect to oversee the on-going decorating and maintenance of their house. As a result of a cost efficiency survey, better staff job descriptions have been written and clearly defined expectations along with newly developed contracts have been implemented.

How often we are unaware or fail to recognize all the small things being done and only seem to notice major accomplishments! Pi Phi collegians and alumnae owe much to our House Corporations.

Masters of Design

Looking for the perfect Pi Phi badge or ring? For a complete Jewelry brochure call (800) 322-1867.

Hazing Hotline

Do you think hazing is taking place in your chapter? Concerned collegians, alumnae, parents or administrators please call to report any hazing activities. The Hotline is (800) 320-1867.

Chapter Anniversaries

The 50th Anniversary celebration of the **CALIFORNIA EPSILON** Chapter at San Diego State University will be held on August 21, 1999. For more information contact Jeanne Kloss Blair, 7245 Navajo Road #350, San Diego, CA 92119, (619) 461-1446.

MARYLAND BETA will celebrate its 55th Anniversary on Saturday, October 2, 1999. For additional information, please contact Betty Schaaf DeGraff, 9309 Wild Bees Lane, Columbia, MD 21045-1827, (410) 730-4870, betty.and.hart@erols.com.

Carolyn Helman Lichtenberg

1999 Crest Award Winners

*Dr. Susan M. Cooley
Texas Alpha
University of Texas
Houston, Texas
Community Volunteer*



As she cared for children who previously suffered from inadequate health care in poverty-stricken Haiti, Susan started to become "energized and focused, and realized that because I was a nurse, I could do something effective. I could sit at my patient's bedside and let them know I cared." Now, Susan is

the Assistant Professor of Pediatrics at the University of Texas-Houston Medical School and the Director of the UT Children's Clinic-Spring Branch. Through the children's clinic, Susan is able to care for low-income families.

In the last 10 years, she has made more than 19 presentations ranging from Developmental Screening Tools for Pediatricians to How One Person Can Make a Difference. She has shared her expertise through articles in medical journals and videotapes. She has served on the boards of many community enrichment programs and services, including the Harris County Task Force for the Prevention of Child Abuse, Can-Do-It for Children's Mental Health, March of Dimes, National Committee for Prevention of Child Abuse and the Houston Child Guidance Center. She currently serves on the boards of such community help programs as Bo's Place: Center for Grieving Children, Lord of the Streets—a program for homeless men, and the Children's Assessment Center. Susan received a Bachelor's of Science in Nursing, a Master's of Public Health and a Doctorate of Philosophy in Nursing. She is a registered nurse and a certified pediatric nurse practitioner.

*Rita Crocker Clements
Texas Alpha
University of Texas
Dallas, Texas
Community Volunteer*



Throughout her life Rita has volunteered in local and national venues to enhance her community. Politically, Rita has served on several committees including the National Federation of Republican Women and the Republican National Finance Committee. She was the co-chairman for the Statewide Steering

Committee—Texans for Bush for President and has been a delegate for two Republican National Conventions. As Texas' First Lady from 1979 to 1983 and again from 1987 to 1991, Rita worked on the Governor's Mansion restoration.

In her community, Rita has served on the boards of many service programs including the Dallas Society for Crippled Children, the Dallas Women's Club, the Economy Task Force of Goals for Dallas and the St. Paul Medical Center Foundation. Through previous board memberships with programs including the United Way of both Austin and Texas, the National Museum of Women in the Arts, AWARE—Alerting Women About Resources and Energy, the Project Teach Advisory Council, the University of Texas at Austin Development Board and the Texas Preservation Trust Fund, Rita has impacted her community. Rita is currently on boards of community outreach groups including the Center for Human Nutrition, Charter 100, the Communities Foundation of Texas' advisory council, the Dallas Historical Society, the Salvation Army of Dallas County and the Dallas Historical Society.

First presented in 1991, this award honors Carolyn Helman Lichtenberg who served the Fraternity as Grand President from 1985 to 1991. Recipients are distinguished alumnae who exhibit excellence and outstanding leadership in their careers or volunteer service to their communities.

*Sonja Hillgren
Missouri Alpha
University of Missouri
Philadelphia, Pennsylvania
Magazine Editor*



Evening discussions around the dinner table were possibly the impetus that spurred Sonja to be a journalist. The family spent time talking about current political issues on and around their South Dakota farm. At 14, Sonja decided to become a journalist, and eight years later, she received her

Bachelor's in Journalism from the University of Missouri with an emphasis in newspaper writing and editing. She then proceeded to earn a Master's of Arts in journalism with an emphasis in broadcasting, also from the University of Missouri. Later, she was one of 12 journalists in the country selected as a Nieman Fellow at Harvard University.

Sonja has written, broadcast and edited agricultural stories for United Press International, Knight-Ridder Newspapers, National Public Radio and several national television programs. She is currently the editor of *Farm Journal*, the nation's largest magazine published for farmers and agricultural businessmen with more than 600,000 subscribers, and she is the Executive Vice President of the parent company, Farm Journal Inc. She has served as President of the National Press Club, one of the world's most prestigious professional and social organizations with 4,500 members. In 1998, Sonja was awarded the Oscar in Agriculture for her outstanding support and promotion of agriculture. The National Agri-Marketing Association named Sonja the 1996 Agricultural Communicator of the Year, based on her constant devotion to accurately communicating about agricultural issues.

*Patricia Neal
Illinois Epsilon
Northwestern University
New York, New York
Actress*



As a young child, Patricia demonstrated her interest in acting by reciting monologues at church and other social gatherings in her childhood home of Knoxville, Tennessee. When she was 11, Patricia's parents allowed her to take acting lessons, and she continued to study acting while in college. Patricia joined her drama coach for summer theater in Pennsylvania, at the end of which, Patricia left for New York City to launch her acting career.

Patricia has acted in more than four Broadway plays, including "The Miracle Worker" (1958) and "Suddenly Last Summer" (1958); 25 movies including "The Fountainhead" (1948), "Breakfast at Tiffany's" (1958), "Baxter" (1973) and "Cookie's Fortune" (1999); and 13 television programs including "Little House on the Prairie," "Murder She Wrote" and "Heidi." She has won a Tony for her performance in "Another Part of the Forest"; an Academy Award for Best Actress in "Hud"; an Academy Award nomination for "The Subject was Roses"; a Golden Globe for Best Television Actress in the drama "The Homecoming"; and three Emmy award nominations.

During her career, Patricia suffered a series of strokes, which left her partially paralyzed. However, she successfully finished years of rehabilitation and has been tireless in developing the Fort Sanders Medical Center's Patricia Neal Rehabilitation Center in Knoxville, Tennessee.

Graduate Consultants



Anne-Marie Anderson
Traveling Graduate Consultant

- New York Alpha
- Bachelor's of Science, Public Relations
- Chapter President, Standards Board, Unity Chair, Song Leader
- Order of Omega; Phi Eta Sigma; Golden Key National Honor Society; Syracuse University Oratorio Society; Hendrick's Chapel Choir

"The organization can only become stronger when its future members are properly trained and maintain the same vision that our Founders created many years ago. It is my desire to continue to be a part of the vision as an alumna while working with collegiate women on leadership training, encouragement and suggestions. I know that the lessons that I have learned can be a resource to other chapters."



Jennifer Bills
*Resident Graduate Consultant
Valparaiso University*

- California Zeta
- Bachelor's of Arts, English
- Chapter President, Philanthropy Chairman, Panhellenic Delegate, Alumnae Relations Chairman
- Selected member for the Statement of Relations between the University of California,

Santa Barbara and the Greek Community; Campus Crusade for Christ; Dean's List; Hillside House, Friendship Manor and Special Olympics Volunteer

"Learning more about my strengths and weaknesses is what I hope to do ... I am certain that I will be able to do this and to help other chapters and individual members do the same. My lessons in college and Pi Phi have been invaluable, and it is my goal to pass this on next year and many years to come."



Christy Andrews
Traveling Graduate Consultant

- Texas Gamma
- Bachelor's of Business Administration, Accounting
- Chapter President, Philanthropy Chairman, Bylaws Revision Committee
- President and Secretary of Order of Omega; President, Membership Chairman and

Philanthropy Chairman Omicron Delta Kappa; Mortar Board; Rho Lambda; Golden Key National Honor Society; Texas Tech University Homecoming Queen; Texas Tech University Student Leader of the Year; Texas Tech University Outstanding Greek Freshman and Junior

"Pi Phi has afforded me the opportunity to be a leader, to be a friend, to be a volunteer, and, most importantly, to be exactly who I am, perhaps more, but never less. I want chapters to know how far reaching the bonds of Pi Beta Phi really are, and how much their individual chapters have to offer them."



Stephanie Hardie
Traveling Graduate Consultant

- Nevada Alpha
- Bachelor's of Science, Business Administration and Finance
- Chapter President, Rush Chairman, Panhellenic Representative
- Gamma Sigma Alpha; Order of Omega; College of Business Administration scholarship recipient; Business Dean's List;

American Express Financial Advisers Recruiting Specialist

"My experiences as President, Rush Chairman and Panhellenic Representative for Nevada Alpha will be beneficial as a Graduate Consultant. As a former President, I understand the excitement that goes along with changes and decision making! At the 1997 Convention, I formed a solid understanding of Pi Beta Phi's goals and objectives, and mine are one in the same."

For the next year these women will serve as ambassadors for the Fraternity. Seven women will be Traveling Graduate Consultants, visiting chapters coast to coast. One consultant will be based with a new chapter as a Resident Graduate Consultant.



Dena Long
Traveling Graduate Consultant

- Texas Epsilon
- Bachelor's of Arts and Science, Psychology
- Chapter President, Membership Chairman, Panhellenic Delegate
- Order of Omega; Outstanding Greek Female; North Texas Forty member; Dean's List

"Pi Beta Phi has enabled me to grow as a woman more than any other experience in my life. I truly want to give back to Pi Phi everything that it has given me."



Sarah Orr
Traveling Graduate Consultant

- Illinois Epsilon
- Bachelor's of Science, Audiology, Speech Pathology and Learning Disabilities
- Chapter President, Philanthropy Chairman, Assistant Rush Chairman
- Panhellenic Vice President Judicial; President of Rho Lambda; Order

of Omega; Student Athletic Trainer for Northwestern's football team; Student Coach and Co-Captain Women's Club Soccer

"I developed a pride and faith in Pi Beta Phi that I hope will wear off on many other Pi Phis. I am extremely excited and prepared to serve as an educator, diplomat, counselor, role model, mentor, liaison, ambassador and resource to other Pi Phis."



Lauren Mengel
Traveling Graduate Consultant

- Georgia Alpha
- Bachelor's of Arts, Psychology
- Chapter President, House Manager, Panhellenic Representative, Committee Head of Home Improvement Group, Georgia Alpha Woman of the Year
- Academic Honesty Board,

Student Judiciary; Communitary Best Buddies Program; University of Georgia Equestrian Team; Order of Omega; Rho Lambda

"I have learned about crises management, techniques for group cohesiveness, and how efficiently the Alumnae Advisory Committee, Executive Council and House Corporation can work together. In other words, I have seen and experienced what sisterhood truly is."



Kelley Teague
Traveling Graduate Consultant

- Florida Delta
- Bachelor's of Arts, Telecommunications, News and Public Affairs
- Chapter President, Chapter Membership Chairman
- Chairman of J. Wayne Reitz Union Board of Managers Long Range Planning Committee;

Preview Staff for New Student Orientation; Florida Cicerones, Student Ambassador for the University of Florida; Named Outstanding University of Florida Student; Order of Omega

"Attitude is everything. If the chapter does not sense your desire to reach a goal, they will not be able to accept the goal as their own. Be excited about the things you do. Enthusiasm is contagious!"



A. White alumna johnny collar shirt. M, L
T257 \$28.00
 B. Navy alumna sweatshirt. M, L, XL
SW206 \$25.00
 C. Navy and white pullover. S, M, L
SW208 \$52.00
\$48.00 Sale

D. Alumna T-shirt. L, XL
T194 \$12.95
 E. Embroidered zig-zag T-shirt. L, XL
T222 \$19.95
\$16.00 Sale
 F. White T-shirt with blue and burgundy print. S, M, L
T251 \$15.50

G. Arched hat with ΠΒΦ on back.
N361 White \$18.00
N362 Navy \$18.00
 H. Bar design hat. Specify color: white or red.
N363 \$18.00
 I. Two-tone navy and hunter hat.
N121 \$16.00
 J. Two-tone hunter and khaki hat.
N122 \$16.00
 K. Khaki ΠΒΦ hat.
N120 \$16.00

L. Ash-gray jersey shorts. S, M, L, XL
SH138 \$22.50
 M. Crest T-shirt. L, XL
T236 \$14.50
 N. Arrow T-shirt. L, XL
T119 \$17.00
 O. Facts T-shirt. L, XL
T127 \$14.00
\$10.00 Sale
 P. History T-shirt. M, L, XL
T239 \$12.00



A Gift for the Red Barn



After visiting Arrowmont and the Red Barn, a fifth-grade class at Pi Beta Phi Elementary School created this 6' x 8' mural and donated it to Arrowmont. Twenty-seven children painted the 192-tile mural, which captures the spirit of the Settlement School. Each child also painted a tile for the border.

HAVE YOU MOVED OR CHANGED YOUR NAME?

Initiated Name (first/middle/maiden)

Name (first/maiden/last)

New Address

City/State/Zip

Phone Number

Chapter and Year of Initiation

If you are an officer in the Fraternity, please give title so that we may update officer lists.

Clip this form, place in a stamped envelope and send to:
Pi Beta Phi Central Office
7730 Carondelet, Suite 333
St. Louis, MO 63105

Pi Beta Phi Central Office,
7730 Carondelet, Suite 333
St. Louis, MO 63105