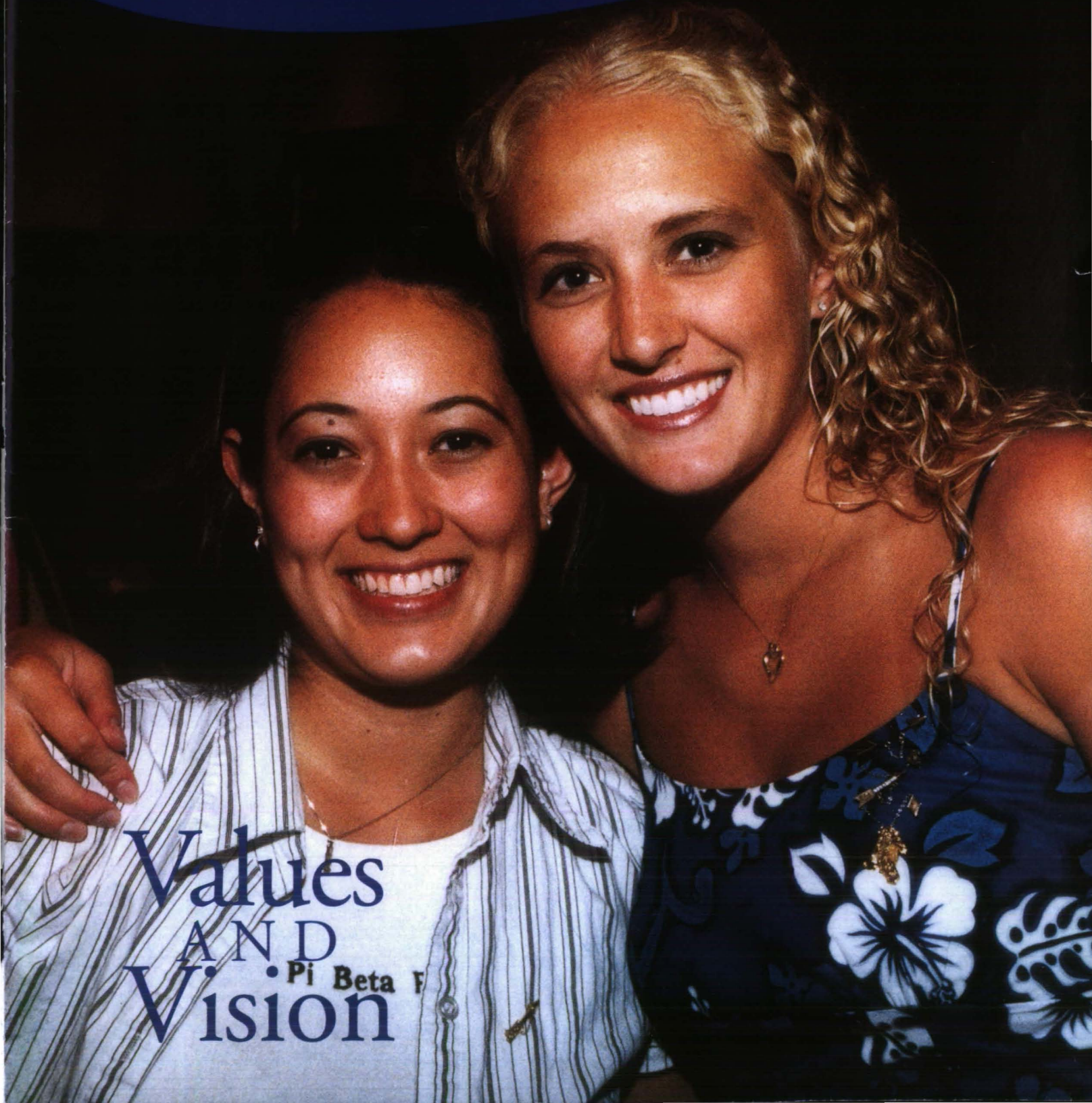


FALL 2003

The **Arrow** of Pi Beta Phi



Values  
AND  
VISION  
• Pi Beta Phi

# Dear Pi Phis,



Grand President Emily Russell Tarr.

Values and Vision were abundantly present at the 64th biennial convention this June in Anaheim. I wish each and every one of you could have been there to experience the excitement in the convention ballroom as nearly 1,000 women watched and listened intently as bigger than life collegians and alumnae told their Pi Phi story on dual projection screens.

Following that, the new collegiate programming, "Leading with Values" was launched. In addition to the programming, our new Pi Phi graphic identity was unveiled and much much more.

## BUT WHY ALL THE NEW?

The future strength of Pi Beta Phi both sociologically and financially depends on the overall involvement of its members. In recent years, the Fraternity has experienced a decline in the number of collegiate members who remain active through four years. There has also been a decrease in the number of alumnae who stay involved in the Fraternity after graduation.

There is mounting evidence that Pi Beta Phi is falling short in adapting to the needs of members today. For Pi Beta Phi to be recognized as a premier organization for women it must restructure existing programs and create new ones in order to make them more engaging, relevant, and appealing. Pi Beta Phi is preparing Friends and Leaders for Life. In doing that we will continue to build on our traditions, but we will not limit ourselves to traditional thinking.

## MUCH ADO ABOUT NEW

"Leading with Values" is Pi Beta Phi's Member Development Program. Each collegiate member receives her personal program overview binder which details the Fraternity's commitment to delivering developmental opportunities and support to all members consistent with the ideals defined through the Lifelong Growth Objectives. Because of the need for programming to be adaptable and fluid, many of the program resources are located in the Leading with Values section of the Fraternity Web site. A more in-depth look at Leading with Values can also be found on the Web site. The member development program continues to be grounded

on our founding values of integrity, honor and respect, lifelong commitment, personal and intellectual growth, philanthropic service to others, and sincere friendship. This programming replaces existing programming.

*The Arrow* template has a new design. In keeping with the updated look there are reformatted pages, more color pictures, and larger images for all to enjoy.

The Fraternity Logo has been designed to bring together the elements of our heritage and augment that with a sense of positive forward motion. The modern font and upward design of the arrow are specifically utilized to illustrate those elements. The logo, which will be used on all printed material, is designed to bring a forward-thinking contemporary look and feel to our graphics.

The Fraternity Web site has taken on a bold new look too. Have you visited it at [www.pibetaphi.org](http://www.pibetaphi.org)? Our Fraternity's proud heritage is showcased, but at the site it's easy to see how we are poised for the future — programming and manuals are downloadable, there are bulletin boards for questions and comments and more user friendly navigation, and logo and graphics are there for members, too.

Champions Are Readers (CAR) literacy program has been adapted from an original concept of the Houston, Texas Alumnae Club. The CAR program is designed to serve as an international literacy program that all alumnae clubs and chapters can easily conduct, and it encourages collegian and alumnae interaction for the benefit of literacy. (See CAR article on page 15.) The purpose of the program is to improve the child's reading skills. Program implementation is easy and materials can be ordered at [www.pibetaphi.org](http://www.pibetaphi.org). Books for the CAR program are generously provided by the Pi Beta Phi Foundation.

## YES, THERE'S MUCH ADO ABOUT NEW ...

In our fast-paced world, things change quickly. Pi Phi must position itself so that we can alter direction easily in order to meet the needs of the organization, but also to succeed in providing all members with a lifelong paramount experience. Grand Council believes the right direction has been determined and the Fraternity is on the road to success. We are beginning a new journey; one which will ensure for all Pi Phis the experience of a lifetime.

*Pi Phis are you ready?*

Ring ching,

A handwritten signature in cursive script that reads "Emily".

**ASSISTANT EDITOR**

Sara Bell English  
thearrow@pibetaphi.org

**COPY DEADLINES**

Fall - June 1  
Spring - November 1  
Summer - April 1

**PI BETA PHI HEADQUARTERS**

1154 Town & Country Commons Drive  
Town & Country, Missouri 63017  
(636) 256-0680  
FAX (636) 256-8095  
centraloffice@piphico.org  
www.pibetaphi.org

**ADDRESS CHANGES AND  
IN MEMORIAM**

Pi Beta Phi Headquarters  
1154 Town & Country Commons Drive  
Town & Country, Missouri 63017

**PI BETA PHI FRATERNITY**

ΠΒΦ

Founded 1867

**FOUNDERS**

Emma Brownlee Kilgore  
Margaret Campbell  
Libbie Brook Gaddis  
Ada Bruen Grier  
Clara Brownlee Hutchinson  
Fannie Whitenack Libbey  
Rosa Moore  
Jennie Nicol, M.D.  
Inez Smith Soule  
Fannie Thomson  
Jennie Horne Turnbull  
Nancy Black Wallace

**Features**

- 6 Pi Phi is On the Move!**  
Have you seen our new logo and look?
- 8 Values and Vision**  
Take a look at Pi Phi's 64th Biennial Convention.
- 14 Meet Grand Council**  
Council members share a little of their lives.
- 15 Champions Are Readers**  
An introduction to Pi Phi's new philanthropy.
- 16 Award Winners**  
Pi Phi's finest: 2003 collegiate and alumnae award winners.
- 29 EPK/EHT Winners**  
International winners highlighted.
- 41 ABO/CS Winners**  
Province winners of two prestigious collegiate awards.

**Departments**

- 4 From the Reader**
- 20 Foundation**
- 22 Arrowmont**
- 24 Alumnae News**
- 30 Reunions & Anniversaries**
- 32 State of the Fraternity**
- 34 Directory**
- 36 Collegiate News**
- 44 Masters of Design**
- 45 In Memoriam**
- 46 News and Notes**

**On the Cover:**  
Collegians at the 64th  
Biennial Convention in  
June.

Member College Fraternity Editors Association



*The Arrow of Pi Beta Phi* is published by Pi Beta Phi Fraternity, 1154 Town & Country Commons Drive, Town & Country, MO 63017. POSTMASTER: Send address changes to *The Arrow of Pi Beta Phi*, 1154 Town & Country Commons Drive, Town & Country, MO 63017.

# From the Reader

The Arrow invites comments about the magazine, its articles or any other topic of interest to our readers.

In order for your letter to be published, please include full name, address and chapter of initiation. Letters may be edited for style, clarity and length.

Send comments to:  
1154 Town & Country Commons Drive  
Town & Country, Missouri 63017  
or e-mail [thearrow@pibetaphi.org](mailto:thearrow@pibetaphi.org)

## ALUMNAE NOTES

Dear Pi Phi Sisters,

I'm writing to thank you for the incredible warmth you showed me at the 2003 convention. When I boarded the plane in Omaha, I had no idea what awaited me in Anaheim. To my delight, I discovered hundreds of intelligent, successful, goal-oriented women willing to share a smile or a few kind words. The most remarkable discovery I made was the Pi Phi sisters' genuine interest in each other's climb up the ladder of success. You've mastered the art of supporting each other where some organizations criticize successful members amongst them. Not only did I feel welcome, my time in Anaheim sharing with those incredible women was invaluable.

My family often spoke of Pi Beta Phi and Fannie's dream that time couldn't erase. I laughed when I saw Pi Beta Phi inscribed on a pair of flip flops and wondered what Fannie would think of the success born out of their humble beginning. I took an alternate route in my educational pursuit and felt I'd missed an opportunity to continue her tradition.

Anaheim afforded me a chance to walk in my great-great-grandmother's footsteps and I have chills recalling the initiation process.

The desire to research my heritage was the catalyst for contacting the Pi Beta Phi organization to offer my services volunteering at a local university. A few months later I learned I'd been selected as the 2003 honor initiate. To those of you who shared in my initiation ceremony and to those of you I've yet to meet, please accept my deepest gratitude for allowing me to join your phenomenal organization. The support system woven through time by Pi Phi women touches my heart. I'm truly thrilled to call myself an Illinois Alpha and look forward to many years in Pi Phi service.

MICHELLE LIBBEY  
ILLINOIS ALPHA  
GREAT-GREAT-GRANDDAUGHTER OF  
FOUNDER FANNIE WHITENACK  
LIBBEY  
BELLEVUE, NEBRASKA

Today I saw something I never expected to see, my name in *The Arrow* as a newly initiated alumnae member of Pi Beta Phi! What a wonderful honor to join such a stellar group of women, many of whom I already knew through my job as vice chancellor of the University of Tennessee at Chattanooga or through civic work and friends in Chattanooga.

I am especially grateful to Tennessee Alpha Marion Dobbins Griscom, the regional officer who nominated me for the honor, to the members of the Chattanooga, Tennessee Alumnae Club who welcomed me so heartily, and to the Tennessee Gamma chapter at UT where I received my doctorate a few years ago after turning 60. I feel as if I have a great new group of sisters

with whom I will be friends forever and I will work side by side to make great things happen.

DR. MARGARET KELLEY  
TENNESSEE GAMMA  
CHATTANOOGA, TENNESSEE

I was so happy to see in the Summer 2003 issue a photo of the Pi Phis in London. This Pi Phi Pocket was started a few years ago by my beloved little sister, dear and treasured friend, California Gamma Elizabeth Robertson Gollin. I was thrilled when I heard she wanted to do this, and know of the dedicated time and effort she put into it.

Years ago our family lived in Germany, and I found there was a thriving Panhellenic group in the area. I joined, and one of the first ladies I met was a Pi Phi. This affiliation helped me make an easy adjustment to living abroad, and I realized that one can probably bump into a sister in the wine and blue just about anywhere. Nice feeling!

DUCHESS TOMSON EMERSON  
CALIFORNIA GAMMA  
HAYDEN LAKE, IDAHO

## SUMMER 2003 FEATURE

This letter is to personally commend you on the Summer 2003 edition of *The Arrow*. Thank you for the insight and critical information. I found the materials useful and am using them to share with friends. My personal story starts back in 1993, where one of my Pi Phi sisters confronted me [about an eating disorder]. I had many other friends confront me, yet I was not ready to listen. A week before graduation, I was out roller blading, fell and fractured my jaw in five places. I was

under 100 pounds at that point — not a healthy place to be.

I am very thankful today for the life I have [without an eating disorder]. I am proud to say that years later, I am coming along side friends and strangers to share in the hope that I found. I want to advise sisters to continue loving and never give up believing in one another, continue to encourage one another, and never give up hope.

**JULIE SCHAEFER**  
NEW YORK GAMMA  
SCOTTSDALE, ARIZONA

How refreshing to see a fraternal magazine deal with a real issue in a real way! Eating disorders in the Summer 2003 issue of *The Arrow* was impressive and appropriate. My thanks to you and Pi Beta Phi for the courage to address topics that matter and inform rather than paint the picture of perfection with the [usual] illusory fraternity propaganda.

**BRITT DUNAWAY**  
DIRECTOR OF RESOURCES AND  
DEVELOPMENT  
SIGMA PHI EPSILON FRATERNITY  
RICHMOND, VIRGINIA

I eat “normally” and so was shocked to discover through this article [“Eating Disorders,” Summer 2003] the extent to which I “inventory” food and ingredients, additives, processing, supplements, etc. in the name of good health. I am beginning to own up to the way I must comment in some way about everything that might pass my lips. I’ve sought out information on all aspects of nutrition and the effects of food on the body. Considering the amount of literature in all media on the subject, I am deducing that

maybe this is not strange behavior, and that I, too, DO qualify as one obsessed by food. And I am recognizing how insidious this behavior is. Rather than bless and enjoy the fruits of the earth, and the labors of those who prepare and bring it to me, I have become a pseudo-food scientist and critic, unable to break bread joyfully. This attitude is surely a contributing factor to the dis-ease many of us face around food.

Since reading the Summer issue of *The Arrow*, I have been making a concerted effort to approach food shopping, preparation and consumption in a less verbal and more appreciative way. My husband, for one, will be ecstatic!

Thank you for bringing this issue to such an appropriate readership in a clear and helpful manner.

**JEAN RIDGLEY SAMPEL-BUECHELE**  
COLORADO ALPHA  
BISBEE, ARIZONA

As a professional in the field of fraternity and sorority advising, I have been sadly impacted by disordered eating all too often. Chapter presidents have confided in me about their experiences with members suffering from this disease, women survivors have shared with me their sometimes horrific stories, and I have had to intervene in cases more than once.

I want to thank Pi Beta Phi for its continued education about this issue. Your recent program development on disordered eating coupled with *The Arrow* article [Summer 2003 issue] provide important information for the members of your sorority to understand and educate others on.

I have always held great respect for your organization and it continues to grow with this type of quality programming and information being

provided to your undergraduate members.

**DAN BUREAU**  
ASSISTANT DEAN OF STUDENTS AND  
COORDINATOR OF GREEK AFFAIRS  
UNIVERSITY OF ILLINOIS AT  
URBANA-CHAMPAIGN

I loved the article about eating disorders [Summer 2003 issue]. I have been battling bulimia for six years and with the help of my sorority sisters and friends, have come to the point where I have nearly won the fight. I am not 100 percent better, but I am closer to the finish line than I was even a few months ago. I just wanted to tell you how much I appreciated the article and hope that others will be aware of suspicious eating activities and help others (like my sisters have done for me).

**SAMANTHA BRASDIS**  
VIRGINIA DELTA  
CHESAPEAKE, VIRGINIA

I was thrilled to read the article on eating disorders by Jessica Setnick in the Summer 2003 issue. This is a serious issue that Jessica addressed head on! I applaud you for featuring this clinical article and helping to get the word out. Working for a hospital that specializes in the treatment of eating disorders, I know that nothing is as important as education and early intervention. Congratulations and keep up the great work!

**MARY LOU BONNAMY MASTRO**  
INDIANA EPSILON  
PRESIDENT/CEO LINDEN OAKS  
HOSPITAL  
PALOS PARK, ILLINOIS

# We're on the move

Pi Beta Phi was the first women's Fraternity, and has continued to be the first in many of its endeavors. In order to continue our leadership, Pi Beta Phi is embarking on innovative and visionary changes. Changes that will benefit all members and depict our Fraternity as one of the premier women's organizations.

In the 1960s Pi Phi experienced a

similar repositioning and looked outside the Fraternity for critical support when it retained Booz, Allen & Hamilton to assist in the organizational structure of the Fraternity. Last summer and fall the Fraternity formed an agreement with Dye, VanMol & Lawrence (DVL), an outside communications firm with national branding experience to help Pi Phi develop a brand.

DVL hosted focus groups with collegians and alumnae and conducted follow-up testing. A recurring message emanating from all Pi Phi

audiences is that the Fraternity cannot afford to stand still and run the risk of eroding the assets that members before have established. Pi Phi must stay focused on its collegiate programming, its development of member benefits and its service to the community.

## THE BRAND

One of the primary outcomes of Grand Council's strategic plan last July was the creation of three key goals: retention of lifelong committed members; attraction of visionary leadership; and the establishment of significant revenue growth from dues-paying members.

In order to successfully achieve these goals, emphasis had to be refocused on values-based programming and service partnership for members, as well as branding the Fraternity to clearly and consistently convey Pi Phi's messages to its present and prospective members.

From the research and brand attributes, DVL developed Pi Phi's primary positioning statements that defined the brand for each Pi Phi audience. For collegians, Pi Phi is positioned as a young women's community. For senior collegians and recent graduates, Pi Phi is positioned to maintain its friendship and support aspects, but has broadened its mission to help women transition from college life to the real world. For established alumnae, Pi Phi is positioned to be a consistent part of life.

The power of the brand visuals is reflected on all Fraternity communications and materials such as envelopes, letterhead, business cards, a Fraternity purpose brochure and *The Arrow*. The Web site is also an integral part of the member branding initiative. The newly designed site is live today.

Just as the graphics of the Fraternity are receiving a facelift, so

## RESEARCH FINDINGS

After Pi Beta Phi completed the first phase of an internal strategic planning process it sought outside professional counsel in evaluating and strengthening the Pi Phi "brand," both on college campuses and among the Fraternity's alumnae community. The first phase of this process included a research initiative under direction of Grand Council, the Foundation and DVL's research partner, Prince Market Research. This multi-pronged research effort consisted of two telephone surveys — one of collegians, the other of alumnae, and two focus groups with collegians and two with young alumnae. What they found reflected research the National Panhellenic Conference and the North American Interfraternity Conference conducted, as well:

- Collegians cited opportunities for personal development, leadership and a fun social life as important elements of their experience.
- Collegians do not always have a positive view of alumnae clubs, but are interested in what the Fraternity could do for them leading up to and after college and graduation. They are interested in social activities, "hands-on" participation in philanthropic activities and career-oriented events sponsored by Pi Phi.
- Alumnae who have lost touch with their sisters or who have not reconnected with the Fraternity (losing touch usually happens within the first five years of graduation) on their own will probably need a personal invitation to get involved in some specific activity.
- All groups were interested in the idea of partnering with one or more other national organizations to make its efforts with literacy more visible and effective.
- *The Arrow* is widely read and liked by collegians and alumnae, even by those who do not pay their dues.
- Donors to the Foundation are the segment most likely to have visited the Pi Phi Web site, although one in five non-dues paying alumnae also reported having visited the site at least once.



too are communication materials of the Foundation.

The brand embodies the promise of Pi Phi, its programs and its services.

### LEADING WITH VALUES

Leading with Values member development program for collegiate members is a new programming guide to set collegians on a course of lifelong personal growth. Member development continues to be grounded on our founding values: integrity, honor and respect, lifelong commitment, personal and intellec-

tual growth, philanthropic service to others, and sincere friendship.

This program reflects the Fraternity's commitment to be responsive to the critical requirements of the collegiate members. This means the program needed to be clear and simple with the flexibility to be customized at the local level. It also had to be practical and manageable for our busy collegians, as well as contain a well-defined structure with Web-based technological resources that are updated regularly. The new program focuses on personal and chapter develop-

**At convention, Grand Vice President of Program Development Karen Shelton Chevalier and Grand Vice President of Collegians Linda Noel Ibsen helped present Pi Phi's exciting initiatives for the future.**

ment while offering the promise of lifelong development and commitment. The following growth objectives should be the ideal to which all Pi Phis — collegians and alumnae — should aspire throughout our lifetimes: organizational knowledge; good citizenship; intellectual development; and leadership development.

Pi Phi is committed to delivering developmental opportunities to all members, and this support must be consistent with the ideals defined through lifelong growth objectives, with emphasis on how this helps us fulfill our mission and live our values.

Our Leading with Values member development program sets young Pi Phis on a course of lifelong personal growth, creating the opportunity to be Friends and Leaders for Life.

### MISSION

The mission of Pi Beta Phi Fraternity for women is to promote friendship, develop women of intellect and integrity, cultivate leadership potential and enrich lives through community service.

### VISION

Pi Beta Phi Fraternity is committed to being recognized as a premier organization for women by providing lifelong enrichment to its members and contributing to the betterment of society.

Values  
& VISION  
ANAHEIM, CA JUNE 20-24, 2003

Pi Beta Phi  
64th Biennial  
Convention

*"The values were the highlight of convention." —Collegian*

From the California oranges at the welcome desk, to the introduction of Pi Phi's new branding, to the in-depth look at the Fraternity's values, the 64th Biennial Convention was the Pi Phi place-to-be June 20-24, 2003.

*"The highlight of convention is the infusion of ideas, the reunion with loved but seldom seen friends, and the making of new friendships." —Alumna*

If you were unable to join the more than 1,000 convention delegates and visitors during this time,

here is your time to experience convention — to see the friendships, understand the traditions and keep up-to-date with Fraternity business. Then in 2005 join us in Tampa, Florida to share more ideas and make new friends.

*"Everything was great. I loved it all and will hopefully be back in two years." —Collegian*

For those of you who did attend convention, let this be a reminder of the new friendships you made, the old friendships you rekindled, and the new ideas to continue to share with alumnae club and chapter members.

*"I have so many ideas and I'm so excited to motivate my chapter about all I learned! Wahoo!" —Collegian*

The preparation, planning and organization required to host four days and nights of meetings, meals and entertainment is a staggering responsibility that extended to many hundreds in Anaheim. Convention Coordinator Carolyn Pavletich Lesh, Convention Site Coordinator Nancy Trogman, the Convention Executive Committee, together with the alumnae clubs of Southern California worked hard to provide a memorable reunion for Pi Phis from all over North America. From the smiling faces in the airport, to the strum-





ming guitars at the opening dinner, to the helpful visitors desk, the committee and volunteers helped make convention one that members will remember for years to come.

*"I enjoyed meeting Pi Phi's from around the country and finding so many things and acquaintances in common! It's a small world in Pi Phi!"*

—Alumna

General Chairman Margo Wilton Lesser assembled a great committee that included Assistant General Chairman Sharon Parker Algeo, Arrangements and Communications Chairman Toni Martinovich, Volunteer Chairman Kathie Erickson Bridges, Assistant

Volunteer Chairman Breeze Cooper, Hospitality Chairman Grayne Ferguson Price, and Assistant Hospitality Chairman Bunny Charlson Burns.

*"The highlight of convention was reuniting with the feelings I had toward Pi Phi as a collegian and breaking a new ground with the chapter I advise."*

—Alumnae Advisory Committee Member

So whether you are just now getting a glimpse of convention or are remembering four fun-filled, busy days enjoy recapping Pi Phi's "Values and Vision."

**A collegiate voting delegate and a collegiate alternate voting delegate take time out during dinner for a quick photo.**



**Grand President Sis Mullis presents Jean Wirths Scott with her Grand President Emerita convention seat cover. Being given the new title was a surprise for Jean.**

### LOV SOCIETY

The Living Our Values (LOV) Society recognizes chapters that made financial contributions to the Fraternity to support special projects, including member development programming and brand identity initiative.

At convention, all chapters that are members of the LOV Society received a certificate and an LOV Society ribbon. Those chapters will also be recognized on the Fraternity's Web site at [www.pibetaphi.org](http://www.pibetaphi.org). In addition, Charter Member Chapters, those chapters that contributed \$5,000 or more, will be recognized on a plaque at Headquarters. All LOV chapters are recognized here in *The Arrow*, as well.

*"Love the new direction the Fraternity is heading toward. We are and will continue to be outstanding!"*

*—Alumna*



**Charter members and other members of Pi Beta Phi's Living Our Values Society.**



**Convention Coordinator Carolyn Pavletich Lesh with Convention Site Coordinator Nancy Trogman.**

### Charter Members

- |                  |                |
|------------------|----------------|
| Alabama Beta     | Missouri Alpha |
| Arizona Alpha    | Nebraska Gamma |
| Arkansas Alpha   | New York Delta |
| California Alpha | Ohio Beta      |
| California Beta  | Oklahoma Alpha |
| California Gamma | Oklahoma Beta  |
| California Theta | Oregon Gamma   |
| Colorado Alpha   | Tennessee Beta |
| Florida Beta     | Texas Alpha    |
| Florida Delta    | Texas Beta     |
| Kentucky Beta    | Texas Eta      |
| Louisiana Alpha  |                |

### Other Members

- |                  |                      |
|------------------|----------------------|
| California Eta   | Nebraska Beta        |
| California Iota  | Nevada Alpha         |
| California Kappa | New Mexico Alpha     |
| California Mu    | North Carolina Alpha |
| Colorado Epsilon | Ohio Zeta            |
| Connecticut Beta | Ohio Iota            |
| Florida Alpha    | Ontario Gamma        |
| Idaho Alpha      | Oregon Alpha         |
| Illinois Iota    | Pennsylvania Eta     |
| Indiana Beta     | Pennsylvania Theta   |
| Indiana Gamma    | South Dakota Alpha   |
| Indiana Theta    | Tennessee Gamma      |
| Kansas Beta      | Utah Alpha           |
| Michigan Alpha   | Washington Alpha     |
| Michigan Beta    | Wisconsin Delta      |
| Mississippi Beta |                      |

## HONOR INITIATE

Michelle Libbey is a dynamic individual who is kind, honorable, dedicated, confident and fun. "Fannie would never have imaged there would be so many flip flops at convention," Chelley laughs.

About a year ago, Chelley logged onto [www.pibetaphi.org](http://www.pibetaphi.org) thinking she would volunteer at Creighton University's chapter, Nebraska Gamma. After all, her mother said that with her last name (she is related to Fannie through her paternal line), any Pi Phi would know who she is because "all Pi Phis know the Founders." And she was right. Soon after contacting Grand Vice President of Membership Kay Brock, Chelley was having lunch with Parliamentarian Jan Shrader

## LEGISLATION INCLUDED:

- Fraternity Collegiate dues were changed to \$9 per month and Fraternity Initiation Fee was changed to \$115.
- Ability to receive aid from the Emma Harper Turner Fund was extended to include undergraduate, initiated members.
- Student Loans and Student Loans Committee were discontinued.
- Only Fraternity members and house directors can reside in a chapter room or house.
- Time limits for holding the assets of an inactive chapter were added.
- Changes were made to the duties of the Grand Vice President of Membership, Director of Alumnae Communications, Director of Membership and Collegiate Province President.
- The Fraternity governing documents were edited to reflect more widely accepted terminology. (See "New NPC Terminology" page 46.)

**Illinois Alpha Chapter President Autumn McGee proudly carries her chapter's flag during the parade of chapter banners.**

Falk, APP Linda Oakeson Dobry and Omaha, Nebraska Alumnae Club member South Dakota Alpha Teri Hafner Teutsch, where she was asked if she would like to become a member of Pi Beta Phi. Chelley was so excited, and said yes.

"It gives me chills just thinking about it," Chelley says. She is excited to follow in the footsteps of her great, great-grandmother — a woman not unlike herself.

"We've always had strong women in our family, and I think I have some of her [Fannie] in me," Chelley says. "I took my own path, just as Fannie did so many years ago." And aren't we glad?!

Welcome to you, Chelley Libbey. A true servant leader who is already continuing the Fraternity's tradition of excellence.

*"Michelle Libbey is a wonderful woman and we're lucky to have her as a sister!" — Collegian*



**Evelyn Peters Kyle, the oldest initiate at convention with convention honor initiate Illinois Alpha Michelle Libbey.**



**Foundation sponsored speaker Iowa Gamma Jane Cox brought Iowa Gamma Carrie Chapman Catt's hard work to life.**





**New York City-Manhattan, New York Alumnae Club President Kari Bien McCafferty with Beta Collegiate Province President Rachel Cohen.**



**Pi Beta Phi Directors for the 2003-2005 biennium.**



**Collegians grab a hug and smile with their convention "Values and Vision" binders.**

### PROGRAMMING

Convention attendees schedule started at 8 a.m. every morning and was full of informational meetings and workshops. Programming for convention included:

- Collegians took a deeper look at mentors and Fraternity Education and how the the two combine.
- Collegians also looked at the new four-year programming and brainstormed on taking it back to their chapters. They did the same for the new programming offered to seniors.
- Alumnae attended Angel Exchanges covering interactive leadership training, Fraternity Heritage, the new Holt House video and alumnae club president training.
- Alumnae Advisory Committees were invited to ask questions about the new programming during a question and answer forum and House Corporation members addressed risk management and finances.

### DIRECTORS

- ACADEMICS — Karen Gunther
- ALUMNAE ADVISORY COMMITTEES — Michael Bettin
- ALUMNAE COMMUNICATIONS — Elisabeth Long Young
- ALUMNAE EXTENSION — Jill Jensen Meynen
- ALUMNAE PROGRAMMING — Barbara Lee Fay
- CHAPTER HOUSE CORPORATIONS EAST — Laura Judd Fulton
- DIRECTOR OF CHAPTER HOUSE CORPORATIONS WEST — Lyn Arnot Clark
- CHAPTER SUPPORT REGION I — Shannon O'Donnell Ross
- CHAPTER SUPPORT REGION II — Susan Kingsley Robinson
- CHAPTER SUPPORT REGION III — Diane Bielman
- COLLEGIATE EXTENSION AND RECRUITMENT — Luellen Clymo Smith
- COLLEGIATE PROGRAMMING — Bimi Lane Huebner
- FINANCE — Rae Wohlhueter Maier
- FRATERNITY EDUCATION — Jane Bony Heiserman
- MEMBERSHIP — Kim Barger

## GRAND EXITS

These three “grand” women have shared 26 years of service on Grand Council, not to mention their service to the Fraternity prior to their election to Grand Council. At the Wine Carnation Banquet Sunday night, Sis Mullis, Kay Brock and Maurine Jones were honored for their dedication and hours of outstanding service for Pi Beta Phi. We will miss the leadership of these women.

After 12 years of Grand Council service as Grand Vice President of Program Development, Grand Vice President of Collegians and Grand President, Sis Mullis is retiring from Council. Prior to being a council member, Sis was the Director of AACs, a CPP, the AAC chairman for Georgia Alpha and chairman of the Arrowmont Board of Governors. She has attended every convention since her initiation and we hope she continues to come! When she is not “working” with Pi Phi, Sis is a pharmacist at one of the major hospitals in Atlanta.

Maurine Jones has served eight years on Council as Grand Vice President of Program Development and Grand Vice President of Finance. She previously served as Director of Finance and on California Beta’s AAC as the financial adviser. With a new granddaughter, Maurine is retiring to spend more time with her husband and family.

With six years of Council experience under her belt as Grand Vice President of Membership, Kay Brock is also retiring to spend more time with her husband, four children and 11 grandchildren. Before her stint on Grand Council Kay served as

**Collegians enjoyed getting to know collegians from other chapters while interacting with alumnae club delegates and Fraternity officers.**

Director of Membership, APP and Kansas City, Missouri-Shawnee Mission, Kansas Alumnae Club President.

Thank you to these three women for their dedication to our Fraternity. “We’d like to linger, a little longer, a little longer here with you. We hate to say goodbye, remember Pi Phi, true sisters in the Wine and Blue.”

## SPECIAL GUESTS

Several former Grand Council members attended convention. These honored guests included Adrienne Hiscox Mitchell, Evelyn Peters Kyle, Carolyn Helman Lichtenberg, Jo Ann Minor Roderick, Jean Wirths Scott, Janet Goode Durham-Gard, Carol Inge Warren, Betty Blades Lofton, Carolyn Pavletich Lesh, Lou Ann Montgomery Carter, Ann Dudgeon Phy and Beth van Maanen Beatty.

*“Sis truly is a ‘firecracker’ — she did an excellent job.” — Collegian*



**Retiring Grand Council members Kay Knittle Brock, Maurine Hager Jones and Sis Mullis.**



**A group of alumnae at the Foundation's dinner Sunday night, “Dance Like the Stars.”**



# Meet Grand Council

**GRAND PRESIDENT EMILY RUSSELL TARR**



Texas Beta Emily Russell Tarr graduated from Southern Methodist University with a bachelor of arts degree in elementary education and a minor in German. Throughout her years of service to Pi Phi, Emily has held almost every alumnae club position, was an Alumnae Province President for five years, the Director of Alumnae Communications for six years and Grand Vice President of Alumnae for four years. Emily was also a charter member of the East Fort Bend County, Texas Alumnae Club in suburban Houston.

**GRAND VICE PRESIDENT OF ALUMNAE MARY LOY TATUM**



Oklahoma Beta Mary Loy Tatum received her bachelor of science in home economics education from Oklahoma State University. While earning her degree, she served Pi Phi as Chapter President and Panhellenic Delegate. After graduation, Mary stayed involved in Pi Phi and helped charter the Richardson, Texas and Lake Cities, Texas Alumnae Clubs and was president of both the Richardson, Texas and Northern Virginia Alumnae Clubs. Mary also served as an Alumnae Province President and as Director of Alumnae Programming.

**GRAND VICE PRESIDENT OF COLLEGIANS LINDA NOEL IBSEN**



As a collegian, Linda Noel Ibsen served Colorado Beta as New Member Educator, Corresponding Secretary and Convention Delegate. Since graduation from Denver University with a bachelor of arts in political science, Linda has served on Arizona Beta's Alumnae Advisory Committee for six years, two years as chairman. She was also president of the Phoenix, Arizona Alumnae Club, a Collegiate Province President, the Director of Alumnae Advisory Committees and Grand Vice President of Program Development.

**GRAND VICE PRESIDENT OF FINANCE KAREN CONSALUS PRICE**



Missouri Alpha Karen Consalus Price graduated from the University of Missouri with a bachelor of science in interior design. While in school, Karen served her chapter as Song Leader. After graduation, Karen served Pi Phi as Missouri Alpha's House Corporation Treasurer and as Jackson, Mississippi Alumnae Club's secretary. Karen is also a charter member of the Potomac Falls, Virginia Alumnae Club. Later, she was Graduate Consultant Coordinator, a Collegiate Province President, Director of Finance and Grand Vice President of Philanthropies.

**GRAND VICE PRESIDENT OF MEMBERSHIP BARBARA MCREYNOLDS LAMASTER**



Kentucky Beta Barbara McReynolds LaMaster received her bachelor of science in textiles, clothing and merchandising. While at the University of Kentucky she served as Chapter President, Pledge Class President, Panhellenic Delegate and Panhellenic

Treasurer. As an alumna, Barbara has served Pi Phi as the Alumnae Advisory Committee Chairman for Kentucky Alpha, a Collegiate Province President and the Director of Chapter Support, Region I.

**GRAND VICE PRESIDENT OF PROGRAM DEVELOPMENT KAREN SHELTON CHEVALIER**



California Delta Karen Shelton Chevalier earned her bachelor of science degree in history from the University of California, Los Angeles. Currently, Karen is the Director of Operations at *U.S. News and World Report*. Before her first term as Grand Vice President of Program Development Karen served Pi Phi as Northern Virginia Alumnae Club's secretary, Junior Group President, First Vice President and President. For her outstanding leadership in the club, Karen was named the international Emma Harper Turner Award winner. She then was a Collegiate Province President and Director of Chapter Support, Region I.

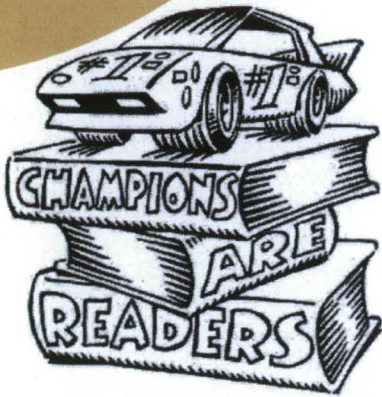
**GRAND VICE PRESIDENT OF PHILANTHROPIES BETSY HARRIS CANTLIE**



New York Gamma Betsy Harris Cantlie graduated from St. Lawrence University with a bachelor of arts in sociology. While in school, Betsy served her chapter as activities chairman and social chairman. After graduation, Betsy stayed involved in Pi Phi as the Cleveland East, Ohio Alumnae Club's President and Vice President and as President of the North Orange County, California Alumnae Club. Before she became Grand Vice President of Philanthropies, Betsy was Alumnae Province President and Director of Alumnae Communications.

# CAR

## INTRODUCING CAR!



Rolled out at the 2003 Convention, the Champions Are Readers (CAR) literacy program was adapted by the Links to Literacy Committee in 2003 using the creative concept originated by the Houston, Texas Alumnae Club. The program is designed to serve as an international literacy program that all Pi Beta Phi alumnae clubs and collegiate chapters can conduct easily. Targeting children in the third grade who are at a critical juncture in developing both good reading skills and a lifelong love of reading, CAR supplements reading activities already being provided in the schools and provides an easy-to-administer program for teachers.

The CAR program enables alumnae clubs and collegiate chapters to offer a turnkey reading enrichment program to their own schools and communities during a designated month of the school year. The program also provides incentives including a recognition ceremony at the completion of the program. The CAR program can be used for one classroom or several, one time during the year or repeated at a later

time in the school year. The options are numerous and will compliment current club or chapter literacy projects. It is specifically designed to compliment other local literacy programs that are currently underway by a club or chapter. It is also designed for any size club or a chapter — from the smallest group to the largest.

Champions Are Readers (CAR) offers many benefits and opportunities for clubs, chapters and individuals:

- Opportunity for meaningful community service in the area of literacy
- Opportunity for one-on-one interaction with students
- Opportunity for alumnae clubs and chapters to work together on a literacy program
- Opportunity for recognition and publicity opportunities for Pi Phi, clubs, and chapters
- Opportunities for organization and teamwork within a club or chapter
- And specifically for chapters, the opportunity to showcase a meaningful philanthropy and service opportunity during recruitment

The CAR Program also promotes family literacy within the community. Students are expected to read aloud with a parent or caregiver for 15 minutes daily during the CAR month. Could this become a habit for these students and parents? What better way to foster a lifelong love of reading among children than by reading aloud with a family member. Adult family members will participate in the growth of their children while potentially developing a love of reading. Parents will be invited to attend an awards ceremony and share in their children's pride in reading. The CAR program will touch many beyond the classroom.

The components of the CAR program may be found in the Fall

Mailing and on the Fraternity Web site at [www.pibetaphi.org](http://www.pibetaphi.org) (click on Philanthropy, then Literacy). All marketing tools necessary are easily available. Letters and forms may be downloaded and personalized to your club or chapter needs. A sample budget, timeline, letters to principals and parents, as well as invitations to an award ceremony, and even award certificates are available. The average cost of the basic CAR program for a class of 25 students is approximately \$112 or \$4.50 a child. A bargain and easily affordable.

The Fraternity has pre-packaged Classroom Packs that contain materials for 25 students. A five student add-on pack is also available. These Classroom Packs for the award ceremony at the conclusion of the CAR program include a book for each child, a bookplate to be placed in each book, a bookmark, AND the official Champions Are Readers — Pi Beta Phi medallion! Complete program materials and Classroom Packs may be ordered from Headquarters by completing an order form found on the Web site and in the Fall Mailing. Ordering may also be done by calling Headquarters at (636) 256-0680.

With your participation, dedication, and commitment, Champions Are Readers (CAR) will become a premier program for your club or chapter and for Pi Beta Phi and will reflect the true attributes and values of our Fraternity.

Start your engines and bring "CAR" to your community through your club and/or chapter!

### QUESTIONS ABOUT CHAMPIONS ARE READERS?

Check out [www.pibetaphi.org](http://www.pibetaphi.org) for answers about the CAR program!

# Award Winners

## COLLEGIATE AWARDS

**BALFOUR CUP** (*top chapter*) — Arizona Alpha (University of Arizona)

**STOOLMAN VASE** (*2nd*) — Ohio Beta (Ohio State University)

**PHILADELPHIA BOWL** (*3rd*) — Oklahoma Alpha (University of Oklahoma)

**DIRECTORS' AWARD** (*4th*) — Arkansas Alpha (University of Arkansas)

**JO ANN MINOR RODERICK CHAPTERS OF EXCELLENCE** (*excluding top four*) — California Mu (Pepperdine University), Florida Alpha (Stetson University), Iowa Beta (Simpson College), Iowa Gamma (Iowa State University), Nebraska Gamma (Creighton University) and Tennessee Beta (Vanderbilt University)

**AMY BURNHAM ONKEN AWARD** — Jessica Najjar, Alabama Beta (University of Alabama)

**CHAPTER SERVICE AWARD** — Noel Feminella, Pennsylvania Gamma (Dickinson College)

**JEAN WIRTHS SCOTT AWARD** (*individual leadership*) — Missy Carrie, New York Delta (Cornell University)

**ANNETTE MITCHELL MILLS AWARD** (*new chapter achievement*) — Indiana Theta (Valparaiso University)

**APP AWARD FOR SENIOR PROGRAMMING** — Missouri Beta (Washington University); HM: California Theta (University of California, Davis) and Illinois Alpha (Monmouth College)

**NITA HILL STARK AWARD** (*best chapter history*) — Indiana Gamma (Butler University)

**HISTORIAN'S VASE** (*2nd best history*) — Oklahoma Alpha (University of Oklahoma)

**CENTENNIAL AWARD** (*best fraternity orientation*) — Tennessee Beta (Vanderbilt University); HM: California Mu (Pepperdine University) and Montana Alpha (Montana State University)

**PI PHI SPIRIT AWARD** — Arizona Beta (Arizona State University), California Gamma (University of Southern California), Florida Epsilon (University of Central Florida), Indiana Gamma (Butler University), Iowa Zeta (University of Iowa), New York Delta (Cornell University), Pennsylvania Gamma (Dickinson College), Pennsylvania Theta (Villanova University), Utah Alpha (University of Utah) and Vermont Beta (University of Vermont)

**LINKS TO LITERACY AWARD** — Pennsylvania Gamma (Dickinson College); HM: Ohio Eta (Denison University), Illinois Alpha (Monmouth College) and California Gamma (University of Southern California)

**HELEN ANDERSON LEWIS AWARD** (*community service*) — Pennsylvania Gamma (Dickinson College); HM: Ontario Gamma (University of Guelph) and Iowa Beta (Simpson College)

**LUCILE D. CARSON AWARD** (*community service*) — Kentucky Beta (University of Kentucky); HM: Texas Gamma (Texas Tech University) and Wyoming Alpha (University of Wyoming)

**D.C. ALPHA PANHELLENIC AWARD** **LARGE** — Iowa Gamma (Iowa State University); HM: Arizona Alpha (University of Arizona) and Tennessee Beta (Vanderbilt University)

**SMALL** — Nebraska Gamma (Creighton University); HM: Florida Alpha (Stetson University) and Illinois Theta (Bradley University)

**ELIZABETH S. KOZA AWARD** (*1st standards*) — Arizona Alpha (University of Arizona)

**HARRIETTE W. EVANS AWARD** (*2nd standards*) — New York Alpha (Syracuse University); HM: Arkansas Alpha (University of Arkansas)

**FRANCES ROSSER BROWN AWARD** (*Fraternity Heritage*) — Arizona Alpha (University of Arizona); HM: California Alpha (Stanford University) and Tennessee Delta (University of Memphis)

**LILLIAN BECK HOLTON AWARD** (*best house manager*) — Bridget Sontag, Oklahoma Beta (Oklahoma State University); HM: Sarah Deskins, Kentucky Beta (University of Kentucky)

**MARILYN SIMPSON FORD AWARD** (*best Arrow correspondent*) — Katherine MacArthur, Missouri Beta (Washington University) and Katie Lemmon, Texas Eta (Texas A & M University); HM: Tiffany Hinson, Oklahoma Beta (Oklahoma State University) and Elizabeth McCoy, Texas Alpha (University of Texas)

**MAY L. KELLER AWARD** (*best Arrowmont programming*) — Kentucky Beta (University of Kentucky); HM: Florida Delta (University of Florida) and Nebraska Gamma (Creighton University)

**OLIVIA SMITH MOORE SILVER SLIPPER** (*best chapter treasurer*) — Holly Carr, Michigan Alpha (Hillsdale College); HM: Katie Chevalier, Ohio Beta (Ohio State University) and Brooke Dooley, California Alpha (Stanford University)

**VERA MOSS BOWL** (*most improved S&S*) — Pennsylvania Gamma (Dickinson College)

**SARAHJANE P. VANASSE PITCHER** (*2nd improved S&S*) — Pennsylvania Theta (Villanova University)

**ALICE WEBER JOHNSON BOWL** (*Top 10 in S&S, last 10 years*) — Iowa Beta (Simpson College)



- GRAND COUNCIL SCHOLARSHIP INCENTIVE (*most academically improved small chapter*) — Indiana Eta (Indiana Purdue University-Ft. Wayne); HM: Iowa Alpha (Iowa Wesleyan College)
- WESTCHESTER CLUB AWARD (*most academically improved large chapter*) — Oregon Gamma (Willamette University); HM: Kentucky Alpha (University of Louisville)
- PI BETA PHI SCHOLARSHIP PLAQUE (*highest GPA, large chapter*) — California Alpha (Stanford University); HM: New Jersey Alpha (Princeton University)
- DR. HAZEL R. MCCUAIG AWARD (*highest GPA, small chapter*) — Connecticut Beta (Yale University); HM: Virginia Theta (Washington & Lee University)
- MCCUAIG CANADIAN AWARD (*highest GPA, Canadian chapter*) — Ontario Gamma (University of Guelph)
- ADDA P. WILLIAMS AWARD (*best academic excellence chairman*) — Katherine MacArthur, Missouri Beta (Washington University); HM: Laura Doner, Ontario Gamma (University of Guelph)
- COLLEGIATE ORIGINAL SONG AND LIGHT PARODY — Zita Dube and Grace Park, Alberta Alpha (University of Alberta)
- COLLEGIATE SERIOUS PARODY — Connecticut Alpha (University of Connecticut)

## ALUMNAE AWARDS

- IDEAL CLUB AWARD — Kansas City, Missouri-Shawnee Mission, Kansas
- TOP 10 ALUMNAE CLUBS — Cypress Creek-NW Houston, Texas; Kansas City, Missouri-Shawnee Mission, Kansas; Manchester Area, Connecticut; Nashville, Tennessee; Northern Virginia; Oklahoma City, Oklahoma; Richardson-Plano, Texas; Richmond, Virginia; Seattle,

- Washington; Southern Fairfield County, Connecticut
- EMERGING EXCELLENCE AWARD — Denver, Colorado; HM: Amarillo, Texas
- EVELYN PETERS KYLE AWARD (*alumnae club service*) — Roberta Bliss Pittman, Wisconsin Beta; Ventura, California
- EMMA HARPER TURNER AWARD (*alumnae club leadership*) — Marilyn Smith Rowell, Alabama Alpha; Birmingham, Alabama
- BEST CHAPTER/CLUB RELATIONS AWARD — Tucson, Arizona; HM: Colorado Springs, Colorado
- NASHVILLE AWARD — Richmond, Virginia; HM: Colorado Springs, Colorado
- JESSE MOEUR FRENCH AWARD — Portland, Oregon
- HOUSTON ALUMNAE CLUB LINKS TO LITERACY AWARD — Kansas City, Missouri-Shawnee Mission, Kansas
- NORTHERN VIRGINIA COMMUNITY SERVICE AWARD — Southwest Florida
- ADRIENNE HISCOX MITCHELL AWARD — Kansas City, Missouri-Shawnee Mission, Kansas
- EXCELLENCE IN COMMUNICATION AWARD — (*Region I*) Arlington Heights, Illinois; Minneapolis, Minnesota; Portland, Oregon; Seattle, Washington; Western Reserve, Ohio (*Region II*) Colorado Springs, Colorado; Indianapolis, Indiana; Kansas City, Missouri-Shawnee Mission, Kansas; Northern Virginia; Oklahoma City, Oklahoma; Potomac Falls, Virginia; St. Louis, Missouri (*Region III*) Brevard County, Florida; Cypress Creek/NW Houston, Texas; Del Sol North, California; Lake Cities, Texas; Long Beach, California
- MARIANNE REID WILD AWARD (*greatest increase in membership*) — Fort Smith, Arkansas and Beaumont, Texas

## Membership Highest Percent of Potential:

- Under 50 — Pueblo, Colorado
- 51 to 100 — Hutchinson, Kansas
- 101 to 150 — Corpus Christi, Texas
- 151 to 250 — Southwest, Florida
- 251 to 600 — Oklahoma City, Oklahoma
- More than 601 — Houston, Texas
- D.C. ALPHA AWARD FOR AAC — Arkansas Alpha (University of Arkansas); HM: Indiana Delta (Purdue University), Utah Alpha (University of Utah) and Wisconsin Alpha (University of Wisconsin)
- CAROL INGE WARREN AWARD (*AAC financial adviser*) — LaDonna Aronoff, Arizona Alpha (University of Arizona) HM: Susan Coomes Booth, Tennessee Beta (Vanderbilt University) and Kristen Rains Hillis, Oklahoma Alpha (University of Oklahoma)
- DOROTHY WEAVER MORGAN AWARD (*Fraternity loyalty*) — Carolyn Pavletich Lesh, Texas Delta
- SARA SHIPLEY BOWERS AWARD (*House Corporation*) — Texas Zeta (Baylor University); HM: Colorado Alpha (University of Colorado) and Minnesota Alpha (University of Minnesota)
- CHAPTER CHALLENGE WINNER (*highest percentage of dues-paying alumnae*) — Texas Alpha (University of Texas)
- ALUMNAE LIGHT PARODY — Lisa Schlup Reese, Denver, Colorado; HM: Toni Martinovich, South Bay and South Coast
- ALUMNAE SERIOUS PARODY — Chan Poyner Pike, LaJolla, California; HM: Susan Hendry Manley, Maryland/DC Suburban

## AWARD WINNERS



Balfour Cup — Arizona Alpha (Asia Dymecki), Stoolman Vase — Ohio Beta (Andrea Robinson), Jo Ann Minor Roderick Chapter of Excellence — California Mu (Jeena Titus), Philadelphia Bowl — Oklahoma Alpha (Natalie Hess) Directors' Award — Arkansas Alpha (Lauren Dutton), Jo Ann Minor Roderick Chapters of Excellence — Iowa Beta (Sarah Mannetter), Iowa Gamma (Katherine Knoll), Tennessee Beta (Victoria Jaymont), Nebraska Gamma (Nicola Caldecott) and Florida Alpha (Amie Davis)



Centennial Award — Tennessee Beta (Victoria Jaymont), Harriette W. Evans Award — New York Alpha (Megan Fortunato), Elizabeth S. Koza Award — Arizona Alpha (Asia Dymecki), Sarahjane P. Vanasse Pitcher — Pennsylvania Theta (Tina Rivard), Vera Moss Bowl — Pennsylvania Gamma (Ashley Gregg)

*Names in parentheses are those photographed.*



APP Award for Senior Programming — Missouri Beta (Kristen Pierce), Frances Rosser Brown Award — Arizona Alpha (Asia Dymecki), Historian's Vase — Oklahoma Alpha (Kristen Weidner)



Lillian Beck Holton Award — Bridget Sontag, Oklahoma Beta (Tracy Ashcraft); Sara Shipley Bowers Award — Texas Zeta (Kathryn Flowers); Olivia Smith Moore Silver Slipper — Holly Carr, Michigan Alpha (Carly Dau); Carol Inge Warren Award — LaDonna Hopper Aronoff, Arizona Alpha (Asia Dymecki)



Links to Literacy Award and Helen Anderson Lewis Award — Pennsylvania Gamma (Ashley Gregg), May L. Keller Award and Lucile D. Carson Award — Kentucky Beta (Julia Whitton), Marilyn Simpson Ford Award — Katherine MacArthur, Missouri Beta (Kristen Pierce) and Katie Lemmon, Texas Eta (Jennifer Sponberg)



Nita Hill Stark Award — Indiana Gamma (Alison Stojak), Alice Weber Johnson Bowl — Iowa Beta (Sarah Mannetter), Annette Mitchell Mills — Indiana Theta (Lauren Rowan)



Pi Phi Spirit Award — front: California Gamma (Whitney Schreiber), Arizona Beta (Kelly Such), New York Delta (Amy Hoffmann), and Utah Alpha (Erica Hipple); back: Florida Epsilon (Tammy Weiler), Indiana Gamma (Alison Stojak), Vermont Beta (Shanna Eisner), Pennsylvania Theta (Tina Rivard), and Pennsylvania Gamma (Ashley Gregg); not pictured: Iowa Zeta



Amy Burnham Onken Award — Jessica Najjar, Alabama Beta (Jessica Najjar); Jean Wirths Scott Award — Missy Carrie, New York Delta (Amy Hoffmann); Chapter Service Award — Noel Feminella, Pennsylvania Gamma (Ashley Gregg)

## AWARD WINNERS



**Best Chapter/Club Relations Award** — Tucson, Arizona (Elizabeth Herp Hicks), D.C. Alpha Award for AAC — Arkansas Alpha (Erin Giddings Rogers), D.C. Alpha Panhellenic Award Large — Iowa Gamma (Katherine Knoll), Small — Nebraska Gamma (Nicola Caldecott), Chapter Challenge — Texas Alpha (Elizabeth Carter)



**Grand Council Scholarship Incentive** — Indiana Eta (Alyson Lindholm), Westchester Club Award — Oregon Gamma (Miranda Shea), Dr. Hazel R. McCuaig Award — Connecticut Beta (Debra Weinstein), McCuaig Canadian Award — Ontario Gamma (Oriana Bertucci), Pi Beta Phi Scholarship Plaque — California Alpha (Brooke Dooley), Adda P. Williams Award — Katherine MacArthur, Missouri Beta (Kristen Pierce)



**Collegiate Serious Parody** — Connecticut Alpha (Amy Griffin), Collegiate Original Song and Light Parody — Zita Dube and Grace Park, Alberta Alpha (Grace Park), Alumnae Serious Parody — Chan Poyner Pike, LaJolla, California (Marilyn Gardner Woods); Alumnae Light Parody — Lisa Schlup Reese, Denver, Colorado (Kelly Gaudet)



**Nashville Award** — Richmond, Virginia (Cathy Kresan Ellis), **Emerging Excellence Award** — Denver, Colorado (Susan Carlson Penner); **Houston Alumnae Club Links to Literacy Award and Adrienne Hiscox Mitchell Award** — Kansas City, Missouri-Shawnee Mission, Kansas (Linda Cozad)



**Top 10 Alumnae Clubs** — Nashville, Tennessee (Elaine Ortoleva Youngblood); Seattle, Washington (Brenda McClure Mallet and Marian Hauke Thom); Richardson-Plano, Texas (Nancy Adams Griffith); Northern Virginia (Amy Favor Moorman); Richmond, Virginia (Cathy Kresan Ellis); Cypress Creek-NW Houston, Texas (Marilyn Miller Smith); Southern Fairfield County, Connecticut (Lori Hanley Moody and Gayle Bradley Mimnaugh); Manchester Area, Connecticut (Angela Doody); and Ideal Club — Kansas City, Missouri-Shawnee Mission, Kansas (Linda Hickerson Cozad); Not pictured: Oklahoma City, Oklahoma



**Northern Virginia Community Service Award** — Southwest Florida (Shirley Strong Weiler); **Jesse Moeur French Award** — Portland, Oregon (Kristi Detlefsen Peterson)



**Emma Harper Turner Award** — Marilyn Smith Rowell Birmingham, Alabama (Marilyn); **Evelyn Peters Kyle Award** — Roberta Bliss Pittman, Ventura, California (Roberta)



**Marianne Reid Wild Award** — Beaumont, Texas (Ashley Edson Bryan); Fort Smith Arkansas (Annemarie Long Wilson)

# Foundation

## GREAT EXPECTATIONS

She comes from a small rural community. Her parents' combined income is less than the sticker price of some automobiles. She is an excellent student, making the Dean's List every semester. She is actively involved in the community and on campus. She works full time in the summer and part time during the school year. Relying on loans, scholarships and whatever financial aid she can find, she is financing her college education entirely herself. She is a Pi Phi. With expectations high and finances minimal, she faces one test that would challenge even the most judicious collegian.

As federal financial aid decreases and tuition costs continue to escalate, the Pi Beta Phi Foundation is proud to administer a scholarship program that offers undergraduates, graduates and alumnae financial assistance to accomplish their educational goals.

Over the years, hundreds of Pi Phis have received financial rewards for their academic achievements. Ranging from \$1,000 to \$10,000, these scholarships exhibit an investment in the futures of talented and deserving Pi Phis. The awards are empowering opportunities for success.

*"Knowing how much faith and value you place in the quality of my education only pushes me to go farther and try harder."*  
—Oklahoma Alpha Tara Hagan

The Foundation awarded 65 scholarships and fellowships for the 2003–2004 academic year. COULD we award more — yes! An additional

54 members applied for Foundation assistance whose needs, unfortunately, we could not meet this year. CAN we award more — yes, but only with more and continued support from Pi Phi sisters and friends.

*"My heartfelt thanks to the very generous donor and all who have made this award possible. Your gifts are truly making a difference in the lives of Pi Phis like me."* —Texas Alpha Michel Miller

Realizing the importance of assisting their own members in need, Oklahoma Alpha and Arizona Alpha endowed undergraduate scholarships this past year. This is the first time in the Foundation's history that such generous chapter gifts have been used for the purpose of creating scholarship endowments. Collegians are not the only ones with an eye out for their members. Pennsylvania Beta's House Corporation endowed the Hanna Mervine Miles Undergraduate Scholarship funded in part by a gift from Mrs. Miles' son. This scholarship was given for the first time this past school year.

*"This scholarship will enable me to reach my goals and attend fully to the pursuit of my studies. Your kind assistance will allow me to continue excelling in my academic work and enable me to devote my attention to helping children succeed in school."*  
—Louisiana Alpha Emily Strassner

Individual, chapter and alumnae club gifts to the Foundation's scholarship program make a significant difference in the lives of our members. Giving to the Foundation's

scholarship program demonstrates a caring and respect for those who strive to achieve, yet struggle due to insufficient personal means. As Pi Phis, we must maintain high expectations. We must offer every Pi Phi sister the opportunity to reach her full potential.

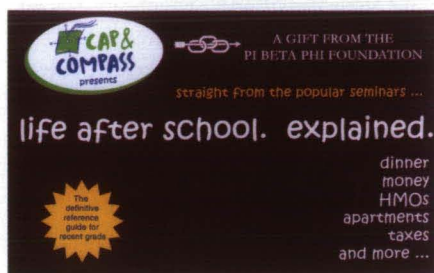
*"Thank you for this generous scholarship. My first year of law school will be filled with new encounters and the exploration of ideas, but I will always know that Pi Phi is supporting me every step of the way."*  
—Indiana Beta Emily Smith

Many more Pi Phis seek ways to finance their undergraduate, graduate and continuing education. Please support the Foundation's scholarship program by making a gift or endowing a scholarship. As one develops a connection with recipients, it becomes a personally rewarding experience. Contact the Foundation's Executive Director for more information.

*Quotes are excerpts from letters the Foundation received from 2003–2004 undergraduate scholarship, graduate fellowship and Alumnae Continuing Education scholarship recipients.*

## APPLICATION DEADLINE

The 2004–2005 academic year application deadline is January 31, 2004. A new scholarship application packet is available on the Foundation's Web site, [www.pibetaphifoundation.org](http://www.pibetaphifoundation.org), or through the Foundation Office.



## SURVIVING POST-COLLEGE

One would have to be living on a deserted island not to be familiar with the explosive attraction to reality-based television programs. It is no longer just the survival of the fittest, but the survival of the smartest. Such is life for the recent graduate, armed with a new diploma, a new job and a flood of questions rushing through her mind. She is no longer living in the comfortable cocoon of college life. She is now living in the “real world”!

The big question is, now what? There were no electives to answer the questions of how to find an apartment, how to decipher HMO, PPO, POS and 401K jargon or how to handle oneself at a business lunch.

The answers are in a clever little book titled “Life After School. Explained.” This humorous wealth of information was a gift to recent graduates from the Pi Beta Phi Foundation. A second mailing of customized, wine-colored books will occur after the first of the year to December graduates and additional 2003 spring and summer graduates.

“Life After School. Explained.” is the creation of two college graduates who founded the company Cap & Compass in 1999. After three years in the working world, they recognized a gap between the subjects learned in the classroom and the challenges faced in life.

“New graduates appreciate that the book is written from the vantage point of a ‘big brother’ or ‘big sister’ giving helpful advice,” co-author

Jesse Vickey says.

Recent graduates receiving the book also have online access to major city guides across the country designed for new alumnae on the move.

Feedback already indicates a positive response to this gift. Indiana Beta Laura Purdy wrote, “Thank you so much for the Cap & Compass ‘Life After School. Explained.’ book. I have read most of it and have really profited from the information.”

Parents also appreciate the information “Life After School. Explained.” provides. Nebraska Beta Susan McMannama wrote, “My daughter, Carolyn, graduated from Kansas State this May. She received the greatest book from the Pi Phi Foundation — thank you, thank you! What a fabulous gift! Both my husband and I read through it and were impressed.”

Popular reality-based television shows may present tough challenges their participants must overcome for survival. Recent Pi Phi graduates, on the other hand, have “Life After School. Explained.,” a fun and informative “decoder ring” for the reality of their new lives.

*Note: The Foundation's gift mailing was based on 2003 graduates whose senior forms had been submitted by the end of May.*



## MEETING MORE NEEDS

Fifty-seven years ago at the 1946 Fraternity Convention in Swampscott, Massachusetts, a transfer of \$50,000 from the Fraternity's Contingent Fund established the Emma Harper Turner Fund. The principal of this new Fund was to be used for chapter house loans and the interest to be used for assistance to Pi Phis in special need.

Today, almost 60 years later, the Emma Harper Turner Fund, now administered by the Foundation, has evolved. Once a Fund that included assistance only to alumnae in severe financial need, the Fund is now available to all initiated members, including collegians.

A study conducted by the Emma Harper Turner Fund Task Force in October 2001 recommended that a legislative proposal should be presented at the 2003 Convention. This proposal would expand the purpose of the Emma Harper Turner Fund to include emergency educational grants to undergraduate members of the Fraternity. It passed resoundingly.

The eligibility requirement for a collegiate member is that she must be an active undergraduate member of the Fraternity with a recent life-changing experience that jeopardizes her ability to stay in school (e.g. death, job loss, disaster). Grants cover educational expenses only, no Pi Phi-related expenses. Because these are “gifts of love,” Emma Harper Turner Fund grants do not have to be repaid.

For more information about this supportive Fund or to inform the committee of someone who could be eligible, contact Ellie Moore Merrick, EHT Committee Chairman. (See page 35 for contact information.)

# Arrowmont

Arrowmont Board of Governors FRONT: Grand Vice President of Finance Karen Consalus Price, Arkansas Alpha Patty Shelton Pyle, Ohio Alpha Carolyn Helman Lichtenberg, Nebraska Beta Mary Ann Behlen Hruska, Massachusetts Alpha Phyllis Fazzari Speer; MIDDLE: Tennessee Beta Susan Williams Knowles, Iowa Gamma Suchi Urs Daniels, South Carolina Alpha Sis Mullis; BACK: Illinois Zeta Cathy Swengel Hunt, Iowa Gamma Anne Ward Burton, Georgia Alpha Liz Anne Greer Allen, David Willard, Texas Gamma Catherine Nelson Evans, Montana Alpha Maurine Hager Jones and Geoffrey Wolpert.



## BOARD INITIATIVE BUILDS COMMUNITY

The Arrowmont Board of Governors met for their bi-annual meeting at Arrowmont, May 4–6, following on the heels of Pi Phi Arts Weekend. The Board is actively engaged with charting the future course of the school with Director David Willard.

Gatlinburg restaurateur Geoffrey Wolpert, the first non-Pi Phi to be on the board, along with other members, are focusing on building additional community support.

The first step in this effort was the formation of a patron's group composed of local art supporters. They were invited to participate in an "Arts Indulgence Weekend," especially planned for the group, that consisted of an upscale Arrowmont experience complete with hands-on

art workshops and information sharing about the school. This project is just one example of building essential philanthropic support for Arrowmont. The board will reconvene again November 6–8, 2003.

## MURAL A REMINDER TO "PLANT NEW SEEDS"

A ceramic tile mural created by students and friends of Arrowmont in memory of Marian Heard, first Arrowmont Director, and in memory of Doris Byars, mother of Sevier County art teacher and project initiate Karen Byars, adds color and interest to Arrowmont's newly renovated lounge. The 14 artists who designed the mural were a very diverse group and included children from third grade to college age. The mural retreat began with sketching

around campus and finally regrouping to combine all of the images into a coherent composition. The artists transferred the drawing onto the tiles with low-fire glazes before kiln firing.

The theme of the mural titled, "Plant New Seeds," represents the vision of Marian Heard and Pi Beta Phi to evolve the Settlement School into a national school of arts and crafts. Images depict scenes from early Gatlinburg, including the Ogle cabin, which now resides beside Arrowcraft Shop, and present day scenes from Arrowmont's campus including many flowers, trees and a tree swing on campus crafted by studio assistants. "Marian was a planter of seeds for Arrowmont and the community," Karen Byars says. "Doris was a planter of heritage seeds for the Landis Valley Farm Museum in Lancaster, Pennsylvania, and a planter of seeds for her family and neighborhood throughout her life." The mural project was funded by donations from Arrowmont staff and friends.



Mural artists pose for a group shot with Karen Byars (upper right) as they gathered with friends and family for the dedication on May 5.

## MAY L. KELLER AWARDS AND DONATION RECOGNITION

### 2003 RECIPIENTS OF THE MAY L. KELLER AWARD

First Place: Kentucky Beta, University of Kentucky

Honorable Mention: Florida Delta, University of Florida; Nebraska Gamma, Creighton University

### CHAPTERS

#### TOP SEVEN

California Zeta, University of California, Santa Barbara

California Kappa, University of California, San Diego

Georgia Alpha, University of Georgia

New Mexico Alpha, University of New Mexico

Oregon Gamma, Willamette University

Texas Epsilon, University of North Texas

Virginia Epsilon, University of Virginia

#### GOLD CIRCLE (\$2,000 TO \$9,999)

Arkansas Alpha, University of Arkansas

Arizona Alpha, University of Arizona

California Beta, University of California, Berkeley

California Nu, Loyola Marymount University

Florida Beta, Florida State University

Florida Delta, University of Florida

Georgia Alpha, University of Georgia

Indiana Zeta, Ball State University

Louisiana Beta, Louisiana State University

Oklahoma Alpha, University of Oklahoma

Tennessee Delta, University of Memphis

Texas Alpha, University of Texas

Texas Beta, Southern Methodist University

Texas Delta, Texas Christian University

Texas Eta, Texas A&M University

Texas Gamma, Texas Tech University

#### SILVER CIRCLE (\$800 TO \$1,999)

Alabama Alpha, Birmingham-Southern College

California Eta, University of California, Irvine

California Gamma, University of Southern California

California Mu, Pepperdine University

California Theta, University of California, Davis

Illinois Theta, Bradley University

Indiana Delta, Purdue University

Iowa Beta, Simpson College



Students in Barbara Joiner's class, "Basic Jewelry Techniques: Rings and Things," during this spring's Pi Phi Arts Weekend, proudly don their fabulous new rings created from silver and semi-precious stones. For more information about Arrowmont's upcoming classes go to [www.arrowmont.org](http://www.arrowmont.org).

Kansas Alpha, University of Kansas

Maine Alpha, University of Maine

Minnesota Alpha, University of Minnesota

Mississippi Alpha, University of Southern Mississippi

Nebraska Beta, University of Nebraska

North Carolina Gamma, Wake Forest University

Ohio Eta, Denison University

Ohio Iota, University of Dayton

Pennsylvania Eta, Lafayette College

Tennessee Beta, Vanderbilt University

Tennessee Gamma, University of Tennessee

Utah Alpha, University of Utah

#### BRONZE CIRCLE (\$500 TO \$799)

California Kappa, University of California, San Diego

Colorado Alpha, University of Colorado

Florida Epsilon, University of Central Florida

Idaho Alpha, University of Idaho

Illinois Alpha, Monmouth College

Indiana Epsilon, DePauw University

Iowa Gamma, Iowa State University

Kentucky Alpha, University of Louisville

Nebraska Gamma, Creighton University

North Carolina Alpha, University of North Carolina

Nevada Alpha, University of Nevada

New Mexico Beta, New Mexico State University

New York Alpha, Syracuse University

New York Epsilon, Rensselaer

Polytechnic Institute

Ohio Alpha, Ohio University

Ohio Beta, Ohio State University

Oklahoma Beta, Oklahoma State University

Oregon Gamma, Willamette University

Pennsylvania Beta, Bucknell University

Virginia Theta, Washington & Lee University

Virginia Zeta, Virginia Polytechnic & State University

Washington Beta, Washington State University

Wisconsin Alpha, University of Wisconsin

#### CLUBS

##### PLATINUM CIRCLE (\$10,000 OR MORE)

Nashville, Tennessee

##### SILVER CIRCLE (\$800 TO \$1,999)

Kansas City, Missouri-Shawnee Mission, Kansas

Metrocrest, Texas

Oklahoma City, Oklahoma

Philadelphia-Main Line, Pennsylvania

South Bay, California

Wichita, Kansas

##### BRONZE CIRCLE (\$500-\$799)

Austin, Texas

San Antonio, Texas

Tulsa, Oklahoma

# Alumnae News

One family especially enjoyed Oklahoma Alpha's initiation. Texas Gamma Sally Perkins Walker and her two daughters Texas Eta Meghan and Jill (who was initiated that day) enjoyed the ceremony with Oklahoma Beta Amy Ward Seamens, their niece and cousin respectively, and Oklahoma Beta Gayle Perkins Ward, their sister and aunt respectively.



President George W. Bush recently nominated **TEXAS ALPHA PAMELA PITZER WILLEFORD** as the next ambassador to Switzerland. If approved she would also oversee U.S. relations with tiny Lichtenstein, which borders Switzerland. In 1995, Bush appointed her to the Texas Higher Education Coordinating Board. She has been chairman of the board since 1998. According to the *Austin-American Statesman*, Pam likes to hunt, help those in need and work hard. In the story, which appeared in the August 3, 2003 issue, "Everyone else loves her because, they say, she is (fair warning, you are about to read the world's longest list of superlatives applied to one human being): com-

passionate, fair, humble, ethical, trustworthy, calm, brilliant, energetic, fun, generous, athletic, thoughtful, humorous, detail-oriented, big-picture oriented, beautiful, loyal, wise, creative, charitable, gracious and diplomatic."

**THE CASCADE, OREGON ALUMNAE CLUB** celebrated Founders' Day with a potluck salad luncheon. The attendees also used the new Founders' Day ceremony about the vision and values of the Founders.

**THE ABILENE, TEXAS ALUMNAE CLUB** enjoyed pinning their newest Golden Arrows **TEXAS GAMMA SUE DUGGAN BURGESS** and **TEXAS BETA PORTIA BLUDWORTH MOORE**, at this year's Founders' Day celebration.

**AKRON, OHIO ALUMNAE CLUB** members enjoyed their annual Loyalty Day Luncheon in memory of Carrie Chapman Catt and in honor of the club's past presidents, nine of whom attended the event. Members also enjoyed a visit from their Alumnae Province President Nancy Crull.

**THE DAYTON, OHIO ALUMNAE CLUB** held its year-end meeting this past March at the home of **OHIO DELTA RAEANN LOGAN HERMAN**. After dinner the members surprised former Grand Council member and **INDIANA DELTA LOIS HUSTON ROSS** with a birthday cake.



TENNESSEE GAMMA DONNA CRUZE received the first place award in the headline writing category of the East Tennessee chapter of the Society of Professional Journalist's Golden Press Card competition. Donna submitted a portfolio of three headlines she wrote in 2002 to be considered for the award. All the entries were judged by a chapter of the Professional Journalist Society in Washington. Donna currently works as a copy editor at the *Knoxville New Sentinel* and has been employed there for the past 13 years.

ALABAMA ALPHA MARGARET MILLER celebrated her 75th anniversary in Pi Beta Phi this year. Margaret is a member of the Birmingham, Alabama Alumnae Club. Club president ALABAMA ALPHA MARILYN SMITH ROWELL gave Margaret her framed 75-year certificate. ALABAMA ALPHA EULETTE FRANCIS CARTER, FLORIDA ALPHA BET AMIDON KESMODEL, and ALABAMA BETAS JAN RUFFIN HATCHETT and BITSY FLOWERS YOUNGBLOOD were also present during the gathering.

On March 30, 2003 *The Duncan Banner* of Duncan, Oklahoma ran a story featuring 25 outstanding people within Stephens County under the age of 40. On that list is TEXAS BETA DR. DEMETRA GRAHAM COX, M.D. and her husband. Demetra is in a family practice in Duncan, as well as being the vice chief of staff and director of the newborn nursery at Duncan Regional Hospital. She also serves on the hospital's obstetrics and gynecology board and the medical executive committee. In the story, Demetra says, "I never thought I'd be anything else but a doctor, even when I was a little girl. ... I was never sorry about the decision; I was that impassioned about it."



The Brazos Valley, Texas Alumnae Club celebrated its first Mad Hatter Luncheon at Texas Gamma Gail Lewis Moore's home in Navasota, Texas. The women enjoyed the spring salad luncheon and the installation of this year's alumnae club officers.



One of the highlights of the year for the Knoxville, Tennessee Alumnae Club, planned by Oklahoma Beta Debbie Hunt Greenwood (pictured) and her co-chairmen was an evening gala to host former Knoxville, movie star and Illinois Epsilon Patricia Neal.



The Phoenix, Arizona Alumnae Club and the Arizona Beta chapter celebrated Dr. Suess's birthday by reading his books to students at ASU's Pappas School for homeless children. The group also gave a check to the school's director to be used for the school library.



The Career Interest Group of the Birmingham, Alabama Alumnae Club hosted a dinner for the seniors and officers of the Alabama Alpha chapter at Birmingham-Southern College.

## ALUMNAE NEWS

Texas Alpha Bea Ann Smith has been elected as president of the National Association of Women Judges. This organization of state and federal judges has more than 1,200 members across the nation and will celebrate its 25th Anniversary in Washington, D.C. in October with a conference devoted to "Justice in America, Justice in the World." Bea lives in Austin where she serves on the Texas Court of Appeals. She and Senator Kay Bailey Hutchison were in the same pledge class at Texas Alpha.



On March 6, 2003, five members of the PHOENIX, ARIZONA ALUMNAE CLUB along with four Arizona Beta collegiate members participated in a pledge drive to help raise money for Arizona State University's Channel 8 KAET-TV public television station. The group facilitated approximately 136 new pledges amounting to \$24,876 in one night. Club and chapter members participate in various joint philanthropy activities throughout the year.

OHIO ZETA MARY SUE KESSLER was honored with Dayton, Ohio's YWCA Lifetime Achievement Award. Mary Sue has volunteered more than 30 years at the YWCA.

IOWA GAMMA BETSY BEATTY REITHEMEYER is the director of the Wal-Mart/Sam's Club Foundation in Rogers, Arkansas. Betsy graduated from Rogers High School, and more than 20 years after college made her way back to Rogers. Under her leadership the foundation grew 100 percent last year. Recent gifts from the foundation were \$5 million to the University of Arkansas for scholarships; \$2 million to area Bentonville High School; \$600,000 to Rogers High School; \$500,000 to the Boys and Girls Club of Benton County; and \$100 million to Washington Regional Medical Center for breast cancer research.

PENNSYLVANIA BETA RACHEL SKOVRONSKY BANDARENKO was honored with the Young Alumni Award from Bucknell University this spring. Following graduation, Rachel worked in public relations and personnel management in New York City. After a move to Annapolis, Maryland she joined the Junior League where she soon became president. She has served as chairman of "Kids on the Block," a group that works with children dealing with difficult issues including learning disabilities, divorce and abusive situations. She also was chairman of the "Star Chef" fund-raiser, raising \$44,000 for the March of Dimes. Rachel and her husband also sponsor a midshipman at the Naval

Academy. This program provides a midshipman a "home away from home" during the first year at the academy. Her Bucknell alumni activities include serving as president of the Pittsburgh and Baltimore Alumni Clubs, co-chairman of the Council of Club Presidents, alumni admissions representative, and entering student reception host.

The ATLANTA, GEORGIA ALUMNAE CLUB had a wonderful year of events and activities this year including an afternoon tea to honor former Grand President Sarah Ruth, "Sis," Mullis and an annual Holiday Mother/Daughter Party. The club year culminated with a luncheon program hosted by club members for the Georgia Alpha senior class titled "Networking — Getting that First Job!" Alumnae shared their career experiences and provided helpful tips to seniors.

KANSAS BETA KAREN LARSON MILNER GRAVES is a recipient of the Kansas State Alumni Medallion for 2003. The award is the highest honor given to KSU graduates in recognition of lifetime humanitarian service. Karen served Salina, Kansas as its first female mayor.

For more than a quarter of a century, CALIFORNIA DELTA ELANA SCHREINER PETERS, M.A., CMC, a professional geriatric care manager, has touched the lives of many. In April, Elana received the 2003 "Caregiver Friendly Award" at *Today's Caregiver* magazine's annual conference held in Ft. Lauderdale, Florida. Elana won the award for "Hard Questions, Simple Answers," a workbook she wrote to take the crises out of care giving. She is also founder and president of CareOptions/Caregiving Solutions in Irvine, California.



Washington State University selected Washington Beta Bettie Alexander Steiger as its Woman of the Year. After 17 years of community service, international volunteer work and raising children, Bettie went back into the corporate arena. Now she is CEO of her own company, Steiger Associates, which specializes in management consulting and strategic marketing services.



Virginia Eta Amy Neubauer, Slidell, Louisiana Alumnae Club President Wyoming Alpha Libby Schlessman Bentson, and club membership chairman Louisiana Beta Suzanne Bensabat Inabnet attended the Slidell, Louisiana Panhellenic tea for graduating high school seniors in the area.



Calgary, Alberta, Canada Alumnae Club members enjoyed celebrating Founders' Day with one of the first Alberta Alphas, Betty Lough (seated), who was initiated in 1931, and Carly Smith (standing, middle), Alberta Alpha's most recent initiate.



Nation's Capitol Alumnae Club members enjoyed their yearly progressive dinner.

## ALUMNAE NEWS



The Texarkana, Arkansas-Texas Alumnae Club recently honored Grand President Emily Russell Tarr with a celebration in the home of California Alpha Megan DeLamar Schroeder. Emily is a native Texarkanian.



Wisconsin Delta Jessica Pitroski has been promoted to the position of marketing services manager at Koss Stereophones. In her new position, Jessica is responsible for all marketing services functions including a recent fund-raising event, "An Evening with the Osbournes," hosted by Ozzy and Sharon Osbourne and Sir Elton John. The purpose of the event was to raise money for the Colon Cancer Foundation and the AIDS Foundation.



Five Pi Phis, all graduates of different colleges, enjoyed setting up and participating in this year's Loyola High School's 72nd annual Birthday Luncheon sponsored by the Loyola High School Mothers' Guild, for which Indiana Delta Jan Kincaid Clifford is president. About 1,200 people attend the two-day event, which is the Guild's largest fund-raiser. The Pi Phi moms' sons attend the all-male Jesuit high school in Los Angeles.

During the two years WASHINGTON BETA HOLLY BARKER LOVE has been president of the SPOKANE, WASHINGTON ALUMNAE CLUB, she has introduced members to many fresh and innovative ideas. She determined to contact and/or locate all area Pi Phis from a list of nearly 500. Now the club's dues-paying membership is at an all-time high. The club continues to enjoy supporting the Washington Beta chapter.

INDIANA GAMMA AMY LOW and INDIANA BETA AMY BERKEMEIER both won the intern of the year for the Indiana Senate and House of Representatives for the Republican caucuses.

Members of the SACRAMENTO, CALIFORNIA ALUMNAE CLUB held their first game night, which they hope to make an annual treat. Club members and friends met for an evening of fun playing board games and cards. The club also joined with seven other area alumnae clubs and four collegiate chapters to enjoy a joint celebration of Founders' Day.

AUSTIN, TEXAS ALUMNAE CLUB members recently honored the Founders and Golden Arrows during their Founders' Day celebration. Members also had the opportunity to present a \$1,500 scholarship to TEXAS ALPHA ALY EHLINGER a collegiate member from Plano, Texas. The scholarship and other donations are made possible by the club's annual fund-raiser.

# Alumnae Winners

*Included below are the nomination letters for each of this year's winners. Now you can share in knowing what makes these women outstanding Pi Phis.*

## EPK PROVINCE WINNERS

|               |                              |
|---------------|------------------------------|
| Alpha         | Lori Hanley Moody            |
| Beta          | Lisa Freeman McCarthy        |
| Delta         | Carol Veasey Powers          |
| Epsilon       | Beth Viering                 |
| Zeta          | Beverly Bryant Huttinger     |
| Eta           | Shirley Nichols Christlieb   |
| Theta         | Margery Boos Murray          |
| Iota          | Judith Douglas Overstreet    |
| Kappa         | Nancy Martin Tice            |
| Lambda        | Ursula (Sally) Jasch Gifford |
| Mu            | Lucille Haynes Wagener       |
| Nu            | Marilynn Trinder             |
| Xi            | Elinor Brown Benefield       |
| Omicron       | Jane Balster                 |
| Pi            | Darcy Ruka                   |
| Rho           | Emma Jostes Keller           |
| Sigma         | Roberta Chisholm Hefley      |
| Tau           | Lucille Sneed Sparks         |
| Upsilon       | Laura Jamieson Williamson    |
| Phi           | Cora Sue Wootters Warren     |
| Chi           | Yvonne Pearl Moise           |
| Psi           | Bonnie Swanton Bitner        |
| Omega         | Susan Rehschuh Hayes         |
| Alpha-Beta    | Dawn Blout Jensen            |
| Alpha-Gamma   | Catherine Alsasser Thomson   |
| Alpha-Delta   | Roberta Bliss Pittman        |
| Alpha-Epsilon | Eleanor Hunt Tucker          |

## EHT PROVINCE WINNERS

|               |                             |
|---------------|-----------------------------|
| Alpha         | Gayle Badley Mimnaugh       |
| Beta          | Allison Brown McGeough      |
| Delta         | Deborah Kay                 |
| Epsilon       | Peggy Batson Ballard        |
| Eta           | Janet Courchene Little      |
| Theta         | Caryl Wing Johnson          |
| Iota          | Anne Hubbard Shambaugh      |
| Kappa         | Marilyn Smith Rowell        |
| Lambda        | Ann Gill Cummins            |
| Mu            | Pam Crowder Petersen        |
| Nu            | Joan Dowell Sick            |
| Xi            | Kitsie Barkley Roth         |
| Omicron       | Kim Westhoven Apfelbach     |
| Pi            | Anne Paule Hall             |
| Rho           | Cynthia Rice Svec           |
| Sigma         | Stacy Haggard Hudgens       |
| Tau           | Ann Washington Radford      |
| Upsilon       | Rebecca White Meyer         |
| Phi           | Tamera Vuchkovich Pirraglia |
| Chi           | Mary Jane Gerhards Sloan    |
| Psi           | Margo Hubbard Schlup        |
| Omega         | Joy Vanasse Goodenough      |
| Alpha-Beta    | Kristi Detlefsen Peterson   |
| Alpha-Gamma   | Tracy Beaufort Whitehead    |
| Alpha-Delta   | Susan Kelly Drobish         |
| Alpha-Epsilon | Jennifer Mahon Harris       |

### EVELYN PETERS KYLE WINNER ROBERTA BLISS PITTMAN

*Evelyn Peters Kyle Award — to honor a Pi Phi alumna for exceptional service to an alumnae club by performing those duties often unrecognized.*

“Wisconsin Beta Roberta ‘Bobbie’ Pittman has been a member of the Ventura Club since 1989, but when our Conejo Valley Club was formed, Bobbie was so anxious for us to succeed that she became a very active member in our club, as well. She has been an invaluable resource and wealth of knowledge for us since 1997, our charter year. She knows all club and chapter procedures and is always willing to lend a helping hand, no matter how large or small the project.

Bobbie has served as treasurer of two clubs and as the Alumnae Club President of the Ventura County, California Alumnae Club. Bobbie produced the club’s yearbook in 1982–84 and from 1994–present. She has attended three Regional Leadership Retreats — two of which she made the nametags for and handled the Pi Phi Express sales. Bobbie fills in where anyone needs a helping hand. Bobbie has also not missed an international convention in the last 13 years and always insists on paying her own way.

Though her chapter, Wisconsin Beta, no longer exists, it has not curtailed her enthusiasm for Pi Phi one bit! She even designed a new banner to be carried every year at the Parade of Chapters at convention honoring her own Beloit College. We think Bobbie is truly deserving of the Evelyn Peters Kyle Angel Award for her many years of loyalty and service to Pi Beta Phi.”

### EMMA HARPER TURNER WINNER MARILYN SMITH ROWELL

*Emma Harper Turner Award — to honor a Pi Phi alumna for exceptional leadership of an alumnae club.*

“Alabama Alpha Marilyn Rowell is an outstanding leader who is exceptional in everything she attempts and inspires all those around her to do their best. She has excelled in each of her offices and has made the Birmingham, Alabama Alumnae Club stronger in every way.

Communication is Marilyn’s forte. E-mails and typed meeting notification cards are sent to those members interested in attending meetings. Telephone calls are also made. These efforts have increased our dues-paying membership.

Marilyn took over the reins of a strong daytime alumnae club. She had a long-range vision of making both the Career Club (night) and the Luncheon Club (day) equally strong. That is now a reality. The young women in the night group have gained confidence and knowledge and will make excellent future leaders of alumnae clubs because of Marilyn’s leadership. Her devotion to Pi Phi is unequalled and she inspires her sisters (both young and old) with her loyalty, devotion and dedication. To accomplish her goals she has gone to both day and night meetings and has visited interest groups sometimes traveling as much as 30 miles one way. At each meeting, Marilyn makes our group aware of the wide scope and importance of our Fraternity.

I can say without reservation that Marilyn is the best leader I have ever known. This is the unanimous opinion of all Pi Beta Phis in Birmingham.”

*To see pictures of province winners visit [www.pibetaphi.org](http://www.pibetaphi.org).*

# Reunions & Anniversaries

Five Ohio Alphas from the 1969 pledge class held their third reunion in five years in Islamorda, Florida where they enjoyed snorkeling, spa treatments and lots of laughs. They planned the next two reunions for Las Vegas and Chicago. Pictured are Gail Ruddy Orr, Patty McCollom, Sue Nelson Roesgen, Sandy Witt Murphy and (seated) Linda Crow Caden.



This past June, four **TENNESSEE ALPHAS** gathered for their second biennial reunion on St. Simon's Island, Georgia. In 2001 the women decided to meet since all four had not been together in 35 years. This year, the group carried Pi Phi tote bags, which they used while they went sightseeing. The bags turned out to be a topic of conversation — other Pi Phi members, as well as other Greek members, stopped the women just to say hi and chat.

Eight **OHIO ZETAS**, who were initiated in 1979 and 1980, reunited for a weekend in Chicago at the end of May. The group plans to continue their yearly reunions at different cities in the United States.

Chartered on May 4, 1963, **ARKANSAS BETA** celebrated its 40th anniversary on April 26, 2003. Arkansas Beta members, alumnae and collegiate, attended an open house, a luncheon and a Cookie Shine at the lodge on the University of Arkansas at Little Rock campus. Two original Alumnae Advisory Committee members, the Resident Graduate Consultant, the first two Chapter Presidents and the first Chapter Treasurer attended the celebration.

The 1945 **KANSAS ALPHA** pledge class members held a reunion in Kansas City in April to celebrate their 58th year in Pi Phi. The reunion included: a tour of Kansas City on Friday; a bus tour of the

Kansas University campus, student union and Lawrence and a luncheon at the recently renovated chapter house on Saturday; and brunch on Sunday. Each night the group sang Pi Phi songs and shared memories.

Eighteen members of the **EVERGREEN, COLORADO ALUMNAE CLUB** celebrated the 25th anniversary of its establishment with a dinner and gathering in the foothills outside of Denver. The group continues to be the only Panhellenic group that organized an alumnae association in that area.

During their annual Founders' Day celebration, **KANSAS CITY, MISSOURI-SHAWNEE MISSION, KANSAS ALUMNAE CLUB** members

priority. Regional has provided assistance in their regional issues in abuse, e of our v

**ALUMNI**

Grand C member bers nar Society.

Chica were in Pi Phi r included penings and rete ming tu between the day used in areas ha

**PHILAN**

The Ch program Conven Commi an inter that all and cha program pared m incentiv Founda of the p for the t

Holt l civic gre and cha emonies of wided House e have be derful a the hon As on

celebrated the club's 90th Anniversary. Eighty members gathered for a gourmet luncheon at Webster House, a newly renovated historic schoolhouse. The group honored 16 Golden Arrow members.

Twenty-seven MONTANA ALPHA alumnae gathered in Scottsdale, Arizona May 9-12. Many of the women had not seen each other for more than 10 years. During the reunion, the group decided to start meeting annually. For more information contact Dawn Falcon Snow at dawnfalcon@earthlink.net.

On April 26, 2003, the BIRMINGHAM, ALABAMA ALUMNAE CLUB celebrated its 75th Anniversary. During the celebration, which took place in conjunction with the club's Founders' Day, club members recognized their 10 founders, as well as Pi Phi's 12 Founders.

Upon graduation from the University of Massachusetts in 1951, several members of MASSACHUSETTS BETA started a round robin letter, which has been winging its way back and forth across the country for the past 52 years.

MISSOURI GAMMA MILDRED PITT recently celebrated her 100th birthday in San Luis Obispo. Mildred was initiated in 1922, and since graduation has been teaching, and giving back to the community. In 1981 she was named citizen of the year. Mildred is known as trusted, kind, generous, smart and reliable.

Thirty-three CALIFORNIA GAMMAS from 1967-70 pledge classes met to celebrate "A Day of Friendship" at the beautiful home of Joan Heid Boul on Coral Cay in Huntington Harbour, California. Those attending came from as far away as Michigan to share in the day's memories.



Florida Betas Danielle Felter, Melissa Dorinski, Angela Bowen, Kinley Osborne and Casey Jo Custer Ritter from the pledge class of 1994 held a reunion in Fort Worth, Texas. The women enjoyed a weekend of catching up, shopping and sight-seeing in the Metroplex.



Nine Indiana Epsilon 1957 graduates gathered in Victoria, British Columbia for a mini-reunion in May. This is the fourth informal reunion Ginger Armstrong Weise has hosted for Pi Phis coming from Maine, Oregon, Texas, Wisconsin and several points in between.



Six California Betas returned to the chapter house for a tour during their 10th annual Girls Weekend. Those who attended included: Lissa Beazley, Susan Reynolds Gould, Ann Gwerder Durst, Gail Halford Morey, Muriel Anderson Martens and Meg Carmack Symes.



The Washington Beta graduating class of 1965 has been meeting for years. FRONT: Judy Bryant Pearson and Linda Kellman Simmons. BACK: Jan Moodie Smith, Sandy Anderson Holt, Carmen Snitily Sirmon, Lynda Hofstad Hendrickson, Donna Howard Kennedy and Judy Johnson.



Indiana Alphas met for the 1962 class reunion at Franklin College. FRONT: Virginia Cummings, Jane Betts, Peggy Toler Howe, Linda Suhre O'Connor; BACK: Charlotte Hensley Walters, Jo Ann Watt Mock, Peri Irish Switzer and Georgia Bullard Long.



Texas Gammas Ann Smith Byrd, Christie Davis Williams, Angie Rye Merriman, Courtney Hall, Stephanie Speer Anderson, Jenny Trenary Gambel and Erin Smith recently enjoyed a weekend reunion at Lake Travis in Austin, Texas.

# Directory

GR

G  
SA

G  
CL

G  
AE

G  
MK

G  
FM

G  
PK

G  
PK

## FORMER GRAND PRESIDENTS

- CAROLYN HELMAN LICHTENBERG, Ohio Alpha, 114 Planterswood Court, Greenville, SC 29615  
 JO ANN MINOR RODERICK, Oklahoma Beta, 4718 Village Court, Stillwater, OK 74074  
 BETH VAN MAANEN BEATTY, Texas Gamma, 13 Westerleigh, San Antonio, TX 78218  
 SARAH RUTH MULLIS, South Carolina Alpha, 10 Kings Tavern Place, Atlanta, GA 30318

## OFFICER EMERITA

- GRAND PRESIDENT EMERITA — Jean Wirths Scott, Pennsylvania Beta, 1186 Cedarwood Drive, Moraga, CA 94556  
 GRAND TREASURER EMERITA — Orpha O'Rourke Coenen, Indiana Delta, PO Box 8, Little Chute, WI 54140

## GRAND COUNCIL

- GRAND PRESIDENT — Emily Russell Tarr, Texas Beta, Route 2 Box 477-B, New Boston, TX 75570  
 GRAND VICE PRESIDENT OF COLLEGIANS — Linda Noel Ibsen, Colorado Beta, 5241 Lichen Place, Boulder, CO 80301  
 GRAND VICE PRESIDENT OF ALUMNAE — Mary Loy Tatum, Oklahoma Beta, 630 Sorita Circle, Heath, TX 75032  
 GRAND VICE PRESIDENT OF FINANCE — Karen Consalus Price, Missouri Alpha, HCR 69, Box 363-9, Sunrise Beach, MO 65079  
 GRAND VICE PRESIDENT OF MEMBERSHIP — Barbara McReynolds LaMaster, Kentucky Beta, 3602 Locust Circle West, Prospect, KY 40059  
 GRAND VICE PRESIDENT OF PHILANTHROPIES — Betsy Harris Cantlie, New York Gamma, 805 Hanover Road, Gates Mills, OH 44040  
 GRAND VICE PRESIDENT OF PROGRAM DEVELOPMENT — Karen Shelton Chevalier, California Delta, 8509 Browning Court, Annandale, VA 22003

## DIRECTORS

- DIRECTOR OF ACADEMICS — Karen Gunther, Ohio Epsilon, 7312 Elizabeth Place, Plano, TX 75025  
 DIRECTOR OF ALUMNAE ADVISORY COMMITTEES — Michael Bettin, Utah Alpha, 630 South Elizabeth Street, Salt Lake City, UT 84102  
 DIRECTOR OF ALUMNAE COMMUNICATIONS — Elisabeth Long Young, Kentucky Alpha, 12984 Andover Drive, Carmel, IN 46033  
 DIRECTOR OF ALUMNAE EXTENSION — Jill Jensen Meynen, Illinois Iota, 3564 Del Amo Boulevard #A, Torrance, CA 90503  
 DIRECTOR OF ALUMNAE PROGRAMMING — Barbara Lee Fay, Illinois Beta-Delta, 5500 West 85th Terrace, Overland Park, KS 66207  
 DIRECTOR OF CHAPTER HOUSE CORPORATIONS (EAST) — Laura Judd Fulton, Illinois Theta, 31 Walnut Circle, Aurora, IL 60506  
 DIRECTOR OF CHAPTER HOUSE CORPORATIONS (WEST) — Lyn Arnot Clark, Texas Alpha, 3 Chaparral, Breckenridge, TX 76424  
 DIRECTOR OF CHAPTER SUPPORT, REGION I — Shannon O'Donnell Ross, Indiana Delta, 913 Kildeer Court, Zionsville, IN 46077

- DIRECTOR OF CHAPTER SUPPORT, REGION II — Susan Kingsley Robinson, Missouri Alpha, 5000 West 68th Street, Prairie Village, KS 66208  
 DIRECTOR OF CHAPTER SUPPORT, REGION III — Diane Bielman, California Eta, 623 Terrace Circle, Huntington Beach, CA 92648  
 DIRECTOR OF COLLEGIATE EXTENSION & RUSH — Luellen Clymo Smith, Washington Gamma, 12917 205th Court SE, Issaquah, WA 98027  
 DIRECTOR OF COLLEGIATE PROGRAMMING — Bimi Lane Huebner, New Mexico Beta, 7605 East Sabino Vista Drive, Tucson, AZ 85750  
 DIRECTOR OF FINANCE — Rae Wohlhueter Maier, Kentucky Beta, 1840 Beacon Hill, Fort Wright, KY 41011  
 DIRECTOR OF FRATERNITY EDUCATION — Jane Bony Heiserman, California Delta, 801 Carriage Court, Southlake, TX 76092  
 DIRECTOR OF MEMBERSHIP — Kim Barger, Oregon Alpha, 10917 Rochester Avenue #103, Los Angeles, CA 90024

## APPOINTED OFFICERS

- ANNIVERSARY CELEBRATIONS COORDINATOR — Ann Denker Webster, Arkansas Alpha, 2249 Caminito Preciosa Norte, La Jolla, CA 92037  
 CONVENTION COORDINATOR — Maureen Wilson Adams, Texas Delta, 1154 Town & Country Commons Drive, Town & Country, MO 63017  
 CONVENTION SITE COORDINATOR — Nancy Trogman, Illinois Theta, 2363 Larkin Street #32, San Francisco, CA 94109  
 ELECTIONS COORDINATOR — Carolyn Helman Lichtenberg, Ohio Alpha, 114 Planterswood Court, Greenville, SC 29615  
 FRATERNITY ARCHIVIST AND HISTORIAN — Frances DeSimone Beque, New York Alpha, 2608 Kent Drive, Carbondale, IL 62901  
 LEADERSHIP DEVELOPMENT OFFICER — Lisa Masters, Georgia Alpha, 195 Carriage Chase, Fayetteville, GA 30214  
 MUSIC CHAIRMAN — Jeannine Van Wagenen Funk, Nevada Alpha, 3290 Piazzo Circle, Reno, NV 89502  
 ASSISTANT MUSIC CHAIRMAN — Cynthia England Hicks, Arkansas Alpha, 3105 W 71st Street, Shawnee Mission, KS 66208  
 NATIONAL PANHELLENIC CONFERENCE DELEGATE — Carol Inge Warren, North Carolina Beta, 9972 Wellington Bay, Woodbury, MN 55125  
 NPC FIRST ALTERNATE — Jill Tucker Read, Tennessee Beta, 1005 Temple Grove, Winter Park, FL 32789  
 NPC SECOND ALTERNATE — Pat Emens Anderson, South Carolina Alpha, 1903 Petit Bois Street N., Jackson, MS 39211  
 NPC THIRD ALTERNATE — Jessica Manning, Washington Beta, 1307 North 43rd, Apartment 101, Seattle, WA 98103  
 PARLIAMENTARIAN — Janice Shrader Falk, Nebraska Beta, 3970 Trails End Lane, Fort Calhoun, NE 68023  
 RISK MANAGEMENT OFFICER — Michelle Murrell Willbanks, California Eta, 5 Sprucewood, Aliso Viejo, CA 92656  
 SUPERVISOR OF CHAPTER HISTORIES — Ann Johnson Gunn, Louisiana Beta, 2207 Salisbury Lane, Houston, TX 77019

## FRATERNITY COMMITTEES

- CANADIAN PHILANTHROPIES COMMITTEE  
 CHAIRMAN — Catherine Clinch, Nevada Alpha, 4732 Willow Creek Road, West Vancouver, BC CANADA, V7W 1C4

- CAROLYN HELMAN LICHTENBERG CREST AWARD COMMITTEE  
 CHAIRMAN — Mary Loy Tatum, Oklahoma Beta, 630 Sorita Circle, Heath, TX 75032  
 CONVENTION COMMITTEE  
 CHAIRMAN — Pat Dunn Moriarty, New York Alpha, 2975 Whisper Lane N., Clearwater, FL 33762  
 HOLT HOUSE COMMITTEE  
 CHAIRMAN — Leisa Ebeling Lowrey, Ohio Eta, 735 East Timberlin Lane, Jasper, IN 47546  
 MEMBERS — Connie Brownlee Hutchinson Hardin, Illinois Alpha; Carolyn Ottinger Kovener, Iowa Alpha; Patricia Baird Link, Illinois Alpha; Jerilyn Price Simak, Illinois Theta  
 LEGISLATIVE COMMITTEE  
 CHAIRMAN — Peggy Wilson Lawrence, Tennessee Gamma, 4303 Iroquois Avenue, Nashville, TN 37205  
 MEMBERS — Jan Chandler Randle, Kansas Beta; Jo Ann Minor Roderick, Oklahoma Beta  
 LINKS TO LITERACY COMMITTEE  
 CHAIRMAN — Sheila Consaul, Illinois Theta, 2550 Brenton Point Drive, Reston, VA 20191  
 MEMBERS — Linda Hickerson Cozad, Missouri Alpha; Holly White Kuhn, Oklahoma Alpha; Eileen Conway Seitz, Illinois Zeta; Anna White Litton, Texas Alpha; Katie Doyle Kennicott, Michigan Gamma  
 NOMINATING COMMITTEE  
 CHAIRMAN — Mary Lu Pendergrast Meixell, Tennessee Delta, 4926 Wheatstone Drive, Fairfax, VA 22032  
 MEMBERS — Barbara Bittner Hakkio, Tennessee Alpha; Carolyn Pavletich Lesh, Texas Delta

## CONSULTANTS

- CHAPTER SERVICES COORDINATOR/GRADUATE CONSULTANT COORDINATOR — Carrie Daech, Illinois Iota, 1154 Town & Country Commons Drive, Town & Country, MO 63017  
 TRAVELING GRADUATE CONSULTANTS — Sara Alpi, Arizona Alpha; Carolyn Clements, Virginia Eta; Abbie Honaker, Indiana Theta; Christy Hunter, California Mu; Jessica Najjar, Alabama Beta; Abbe Stewart, Ohio Eta; Gillian Wilgus, Utah Alpha  
 Resident Graduate Consultants — Abby Barnes, Indiana Theta

## PI BETA PHI HEADQUARTERS

- 1154 Town & Country Commons Drive, Town & Country, MO 63017  
 Phone: (636) 256-0680; FAX: (636) 256-8095  
 E-mail: centraloffice@piphico.org,  
 Web site: www.pibetaphi.org  
 EXECUTIVE DIRECTOR — Renée Ross Mercer, Iowa Zeta  
 CONTROLLER — Juli Holmes Willeman, Iowa Beta  
 Pi Phi Express — (800) 453-5344  
 WEB SITE: www.pibetaphi.org  
 JEWELRY: (800) 322-1867

## ARROWMONT SCHOOL OF ARTS AND CRAFTS

- PO Box 567, 556 Parkway, Gatlinburg, TN 37738  
 Phone: (865) 436-5860  
 E-mail: info@arrowmont.org  
 Web site: www.arrowmont.org  
 DIRECTOR — David Willard  
 SETTLEMENT SCHOOL BOARD OF GOVERNORS  
 CHAIRMAN — Mary Ann Behlen Hruska, Nebraska Beta, 133 Springside Road, Walnut Creek, CA 94596  
 MEMBERS — Elizabeth Greer Allen, Georgia Alpha; Anne Ward Burton, Iowa Gamma; Suchi Urs Daniels, Iowa Gamma; Catherine Nelson Evans,



Texas Gamma; Lloyd E. Herman; Cathy Swengel  
 Hunt, Illinois Zeta; Kilmeny Dunne Jackson,  
 Kansas Alpha; Susan Williams Knowles, Tennessee  
 Beta; Carolyn Helman Lichtenberg, Ohio  
 Alpha; Patricia Shelton Pyle, Arkansas Alpha; Mary  
 Stuart Smith, Pennsylvania Gamma; Phyllis Fazzari  
 Speer, Massachusetts Alpha; Geoffrey Wolpert  
 EX-OFFICIO MEMBERS — Emily Russell Tarr, Texas  
 Beta; Karen Consalus Price, Missouri Alpha;  
 Betsy Harris Cantlie, New York Gamma

**HOLT HOUSE**

402 East 1st Avenue, Monmouth, IL 61462  
 (309) 734-3988  
 Curator — Jane Mears Warfield, Illinois Alpha  
 Hours — Wednesday and Friday, 9 a.m.–5 p.m. Other  
 times by appointment only.

**FRATERNITY INSURANCE  
 REPRESENTATIVES**

PROPERTY AND LIABILITY INSURANCE — M-J  
 Insurance, Inc., Sorority Department, PO Box  
 50435, Indianapolis, IN 46250  
 Phone: (888) 442-7470  
 Web site: www.mjinsurance.com  
 MEDICAL INSURANCE — Coverdell & Company, 2622  
 Piedmont Road NE, Atlanta, GA 30324  
 (800) 787-8711

**COLLEGIATE PROVINCE PRESIDENTS**

ALPHA, REGION I — Ann Dodson, New York Epsilon,  
 15 Blakely Court, Troy, NY 12180  
 BETA, REGION I — Rachel Cohen, Missouri Alpha,  
 241 West 13 Street #17, New York, NY 10011  
 GAMMA, REGION II — Jody Morse Al-Saigh, New  
 York Alpha, 3051 Braxton Wood Court, Fairfax, VA  
 22031  
 DELTA, REGION II — Nancy Strine, South Carolina  
 Alpha, 18030 Sand Wedge Drive, Hagerstown, MD  
 21740  
 EPSILON, REGION II — Missy Ingham Pixton, Colorado  
 Alpha, 12006 Sawhill Boulevard, Spotsylvania, VA  
 22553  
 ZETA, REGION II — Sally McQuail Goodnight,  
 Virginia Zeta, 1431 Breckenridge Drive, Blacksburg,  
 VA 24060  
 ETA, REGION III — Kristen VanVorls Armary,  
 Pennsylvania Beta, 8 Middlewick Court,  
 Simpsonville, SC 29681  
 THETA, REGION III — Leslie Dotson Jagers, Georgia  
 Alpha, 3260 Millwood Trail, Smyrna, GA 30080  
 IOTA, REGION III — Lucy Palmer DiLeo, Ohio Eta,  
 1505 NW 91st Terrace, Gainesville, FL 32606  
 KAPPA, REGION I — Beth Torres, Ohio Iota, 1560  
 North Sandburg Terrace #3607, Chicago, IL 60610  
 LAMBDA I, REGION II — Barbara Green Zahm,  
 Oregon Beta, 361 Granville Square, Worthington,  
 OH 43085  
 LAMBDA II, REGION II — To be announced (see Web  
 site).  
 MU, REGION II — Carol Colacello Erwin, Kentucky  
 Beta, 756 Longwood Road, Lexington, KY 40503  
 NU, REGION I — Nancy Glover Carr, Indiana Alpha,  
 761 Grace Court, Carmel, IN 46032  
 XI, REGION II — Kendra Gardner Decker, Indiana  
 Alpha, 8182 Amarillo Drive, Indianapolis, IN 46237  
 OMICRON, REGION II — Amy Strickland Dreller,  
 Arizona Beta, 1060 Cabernet Drive, Town &  
 Country MO 68017  
 PI, REGION III — Suzanne Malone, Mississippi Beta,

8352 Troon Drive #204, Memphis, TN 38125  
 RHO, REGION I — Becky Schwartz Knutson,  
 Minnesota Alpha, 3136 Georgia Avenue S, Saint  
 Louis Park, MN 55426  
 SIGMA, REGION I — Martha McWilliams Weishahn,  
 Maine Alpha, 1516 Sunset Road, Lincoln, NE 68506  
 TAU, REGION I — Kristy Schoneboom, Iowa Beta,  
 5517 Aurora Avenue #21, Des Moines, IA 50310  
 UPSILON, REGION II — Kerry O'Keefe Shepard,  
 Oklahoma Beta, 3829 O'Hara Terrace, Springdale,  
 AR 72762  
 PHI, REGION III — Sally Ware Hoch, Oklahoma  
 Alpha, 1708 Drakestone, Oklahoma City, OK  
 73120  
 CHI, REGION III — Madalyn Marchman Jones,  
 Arkansas Alpha, 16622 Manningtree Lane, Spring,  
 TX 77379  
 PSI, REGION I — Suzette Thompson Farrar, Colorado  
 Delta, 20158 East Aintree Court, Parker, CO  
 80138  
 OMEGA, REGION III — Barbara Robertson Schwyzer,  
 Minnesota Alpha, 995 Lynx Loop NE,  
 Albuquerque, NM 87122  
 ALPHA-BETA, REGION I — Betty Lopez Smithgall,  
 Tennessee Gamma, 303 North Sweetgrass Avenue,  
 Bozeman, MT 59718  
 ALPHA-GAMMA, REGION I — MarKay Hannum  
 Neumann, California Delta, 9915 183rd Court NE,  
 Redmond, WA 98052  
 ALPHA-DELTA, REGION II — Heather Butler Skogen,  
 Oregon Beta, 23431 South Pine Street, Sherwood,  
 OR 97140  
 ALPHA-EPSILON, REGION III — Beth Seidelhuber,  
 California Kappa, 389 Belmont Street #304,  
 Oakland, CA 94610  
 ALPHA-ZETA, REGION III — Anne-Marie Anderson  
 Bulawka, New York Alpha, 4700 Natick Avenue  
 #16, Sherman Oaks, CA 91403  
 ALPHA-ETA, REGION III — Cindy Henricks,  
 California Epsilon, 818 Ostend Court, San Diego,  
 CA 92109

**ALUMNAE PROVINCE PRESIDENTS**

ALPHA & BETA, REGION I — Hannah Fallon Burke,  
 Connecticut Alpha, 12 Whispering Rod Road,  
 Farmington, CT 06032  
 GAMMA & DELTA, REGION II — Betsy Beese  
 Sheridan, Texas Gamma, 47215 Redbark Place,  
 Potomac Falls, VA 20165  
 EPSILON & KAPPA, REGION II — Marion Dobbins  
 Griscom, Tennessee Alpha, 2928 Blue Teal Lane,  
 Signal Mountain, TN 37377  
 ZETA & ETA, REGION III — Kathryn Schwie,  
 Tennessee Delta, 14303 Verano Drive, Orlando, FL  
 32837  
 THETA & MU, REGION I — Julie Talley Hooton,  
 Michigan Alpha, 2383 Bevington Road, Rochester  
 Hills, MI 48309  
 IOTA, REGION I — Nancy Crull, Michigan Alpha,  
 4037 White Chapel, Loveland, OH 45140  
 LAMBDA & NU, REGION II — Laura Huber Barber,  
 Indiana Gamma, 635 Red Oak Way, Mooresville,  
 IN 46158  
 XI, REGION II — Ann Crigger Shaw, Arkansas Alpha,  
 404 Twin River Drive, Covington, LA 70433  
 OMICRON & PI, REGION I — Linda Oakeson Dobry,  
 Nebraska Beta, 2911 North 161 Street, Omaha, NE  
 68116  
 RHO & TAU, REGION II — Penelope Heyl Moss,  
 Kansas Beta, 14024 Pinnacle Drive, Wichita, KS  
 67230  
 SIGMA, REGION III — Annemarie Long Wilson,

Kentucky Alpha, 1938 Lemon Mint Drive,  
 Birmingham, AL 35244  
 UPSILON, REGION III — Ann Warmack Brookshire,  
 Texas Beta, 3045 Concord Place, Tyler, TX 75701  
 PHI, REGION III — Linda Walker Ligon, Texas Alpha,  
 3615 Ella Lee Lane, Houston, TX 77027  
 CHI, REGION III — Patsy Read Overmiller, Texas  
 Alpha, 1103 Belmont Parkway, Austin, TX 78703  
 PSI, REGION II — Patricia Davisson Brown, Kansas  
 Beta, 7818 Towhee Road, Parker, CO 80134  
 OMEGA, REGION I — Ruth Walsh McIntyre, South  
 Carolina Alpha, PO Box 1135, Bellevue, WA 98009  
 ALPHA-BETA & ALPHA-GAMMA, REGION I — Mari  
 Lou Psihogios Diamond, Oregon Alpha, 17821  
 Marylcreek Drive, Lake Oswego, OR 97034  
 ALPHA-DELTA & ALPHA-EPSILON, REGION III —  
 Cathy Birch Daniel, California Eta, 811 Orange  
 Grove Avenue, South Pasadena, CA 91030

**PI BETA PHI FOUNDATION**

BOARD OF TRUSTEES  
 PRESIDENT — Betty Blades Lofton, Indiana Gamma,  
 9060 Pickwick Drive, Indianapolis, IN 46260  
 VICE PRESIDENT — Beth van Maanen Beatty, Texas  
 Gamma, 13 Westerleigh, San Antonio, TX 78218  
 SECRETARY — Rebecca Smith Jones, Indiana Alpha,  
 4312 Heritage Lane, Rohnert Park, CA 94928  
 TREASURER — Carol Inge Warren, North Carolina  
 Beta, 9972 Wellington Bay, Woodbury, MN 55125  
 TRUSTEE — Lisa Gamel Scott, Colorado Alpha, PO  
 Box 5680, Pagosa Spring, CO 81147  
 EX-OFFICIO MEMBERS — Emily Russell Tarr, Texas  
 Beta; Betsy Harris Cantlie, New York Gamma

**FOUNDATION COMMITTEES**

ALUMNAE CONTINUING EDUCATION SCHOLARSHIP  
 COMMITTEE  
 CHAIRMAN — Marie Gruetzemacher Whitacre,  
 Missouri Alpha, 8815 Ensley, Leawood, KS 66206  
 MEMBERS — Georgia Khym Heath, Texas Beta; Mary  
 Ann Fisher Olinger, Indiana Zeta  
 EMMA HARPER TURNER FUND COMMITTEE  
 CHAIRMAN — Ellie Moore Merrick, Illinois Beta-  
 Delta, 3200 Poinsettia Avenue, Manhattan Beach,  
 CA 90266  
 MEMBERS — Merrilee Bukowski Hall, Iowa Gamma;  
 Jill Lanman Schneider, Alabama Gamma  
 GRADUATE FELLOWSHIP COMMITTEE  
 CHAIRMAN — Sheila Consaul, Illinois Theta, 2550  
 Brenton Point Drive, Reston, VA 20191  
 MEMBERS — Heidi Dake Keogh, Colorado Alpha;  
 Margy Liebers Lovelette, Pennsylvania Eta

UNDERGRADUATE SCHOLARSHIP COMMITTEE  
 CHAIRMAN — Robin McPherson Rohrback, Florida  
 Beta, 2300 Riviera Drive, Vienna, VA 22181  
 MEMBERS — Sue Melberg Davis, Indiana Epsilon;  
 Doreen Mueller, Georgia Alpha

**PI BETA PHI FOUNDATION OFFICE**

1154 Town & Country Commons Drive, Town &  
 Country, MO 63017  
 Phone: (636) 256-0680  
 FAX: (636) 256-8124  
 E-mail: fndn@piphico.org  
 Web site: www.pibetaphifoundation.org  
 EXECUTIVE DIRECTOR — Kay Schiller Hyde, South  
 Dakota Alpha

# Collegiate News

More than 80 Oklahoma Alphas placed second out of 12 sororities on campus for donations and attendance at the Children's Miracle Network Dance Marathon, which the University of Oklahoma sponsors. The Children's Miracle Network raises funds for 170 children's hospitals across North America. During the event, members were able to meet some of the children they were helping.



Due to the unfortunate death of their sister, Andrea Newbold, a victim of a drunk driver, **MISSOURI GAMMAS** at Drury University sponsored an alcohol awareness speaker who focused on the possible loss of life while driving drunk, as well as the legalities behind such a bad decision.

Many women, no matter who they are, are targeted as "easy" because they are women. The **NEVADA ALPHA** chapter at the University of Nevada participated in a programming event that explained to all campus women how to prevent such stereotypes and what to do if they are a victim.

**Sigma Chi Edward King** recently visited the Valparaiso University campus to speak with all Greek members about the importance of ritual, not only in Greek affairs, but also in everyone's life. **INDIANA THETAS** who attended the event left with insight as to how ritual can help reinforce the values Greek life promotes.

The University of North Texas Greek community had the opportunity to hear Harlan Cohen, author of "College in the Nude," speak on topics relating to dating, relationships and rejection. **TEXAS EPSILONS** found Harlan to be effective because he touched on topics that affect collegian's everyday life.

**INDIANA EPSILONS** from DePauw University enjoyed celebrating Founder Jennie Horne Turnbull's birthday. Those who attended the party enjoyed cake, party favors, white elephant gifts and a much deserved study break.

Emme, a plus size model, formal journalist, television star from E! Entertainment Television and a mother of a young girl, came to Villanova University to dispel body myths. She told students, including **PENNSYLVANIA THETAS**, that real beauty comes from within. Emme's motivating stories of success as a woman in the real world captivated the audience, and encouraged the college students.

**FLORIDA BETAS** at Florida State University invited A.J. Smith to speak to the chapter about statistics and traffic violations associated with alcohol. A.J. is the Chief of Law Enforcement for the State of Florida Division of Alcoholic Beverages & Tobacco. He brought several props including specialized goggles with different levels of distortion that helped the women act out what would happen while under the influence of alcohol.

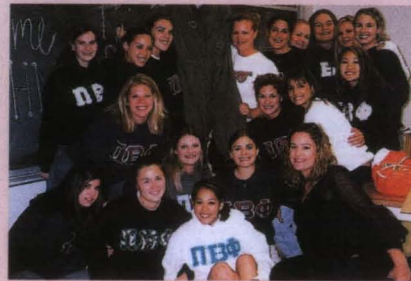
**NEBRASKA GAMMAS** attended a Creighton University campus program titled, "Kristin's Story" which was told by Kristin's mother, Andrea Cooper. During Kristin's first year of college she developed depression. The onset of her depression most likely resulted from the rape she had experienced the summer before her freshman year. Kristin did not seek help or counseling for the rape and held this secret inside. Kristin reached a point where she viewed suicide as the only escape. Andrea provided important tips to the audience on what to do if you are raped or have a close friend or family member who has experienced such a trauma. She also gave crucial information regarding depression and what to do if you or someone close to you is suffering from the disease.

**COLORADO GAMMAS** enjoyed the keynote speaker for Greek Week at Colorado State University, TJ Sullivan. He spoke about confronting the struggling member in the chapter.

**VIRGINIA EPSILON** members at the University of Virginia held an educational program about self-defense for sexual assault, harassment and awareness. Scott McGraf, an instructor from the Life Alliance, traveled from Newark, New Jersey in order to give the safety presentation.



**Tennessee Deltas** at the University of Tennessee participated in the annual Empathy Dinner. Every other member received a disability when they entered the dinner. For instance some wore oven mitts to signify the loss of a hand. Those who did not receive a disability helped the other members go through the buffet line and eat their meals.



Joel Anderson, president of Sigma Alpha Epsilon at the University of California, San Diego left school to serve the nation in Operation Iraqi Freedom and Operation Enduring Freedom. California Kappas made and sent a simple card to him and in return he sent the women a thank you letter and his flight suit.



**Texas Alphas** attended a nutrition program organized by peers at the University of Texas. The representatives from University Health Services provided members with pamphlets describing proper eating habits and foods to help students stay healthy.



A representative from the National Crime Stop Program spoke to Florida Epsilons at the University of Central Florida. The women learned various personal, campus and car safety tips.

Texas Etas heard a young man named Buddy speak on his personal experience with drunk driving. His true story, told in person, was a violent wake-up call to anyone who has ever thought about driving drunk. While in college, Buddy decided to drink and drive home with his friends in the car. The resulting car accident left him unharmed, but killed his best friend in the passenger seat. Buddy spoke at Texas A&M less than two weeks after his own sister was killed by a drunk driver. Buddy's story inspired Texas Etas to take a stronger stand against drunk driving.



The Louisiana State University newspaper, *The Reveille*, the LSU police department and the school's chancellor, Mark Emmert, held a program to answer questions about the south Louisiana serial killer before he was apprehended. This panel helped increase LOUISIANA BETAS safety awareness in their daily lives and gave tips to help members from becoming a victim.

ONTARIO GAMMAS and Delta Upsilon from the University of Guelph participated in the Canadian Greeks Conference, an annual event that unites Greek groups from all across Canada to talk about fraternal life.

OHIO BETAS joined other Greeks during Ohio State University's Greek Week to hear Ross Szabo a student at American University speak about his battle with depression and as a result his bipolar mental illness. According to Ross, an estimated one in five teenagers and adults in the United States suffer from mental illnesses. The point of Ross' speech was to remove and decrease common stigma's associated with mental illnesses.

PENNSYLVANIA GAMMAS welcomed Dr. Linda Chalk of Dickinson College to speak to the female Greek community about the importance of recognizing and caring for eating disorders. She spoke about the specifics of eating disorders and how

to deal with them if you or a friend is struggling with one. A Pennsylvania Gamma spoke about her own battle with anorexia, which alerted chapter members to the possibility of their fellow sisters dealing with this disease.

Sigma Alpha Epsilon held an ethics seminar that was open to all Greeks and non-Greeks at the University of Maine. Several MAINE ALPHAS attended the event during which many different speakers talked about the ethics of Aristotle, Kant and Mill. The Chief of the Public Safety Department spoke about the ethics involved in crimes.

**TEXAS DELTAS** hosted two Texas Christian University police officers who informed the campus-wide audience of the risk involved in underage drinking.

**NEW MEXICO BETAS** showed their support for New Mexico State University's Women's Studies Program by attending "The Vagina Monologues" to raise funds for La Pinon, a rape crises center; La Casa Inc., a domestic violence shelter; and Amigos de Las Mujeres de Juarez, a group advocating the safety of women in Juarez, Mexico.

Ms. Odessa Johnson, a member of the Board of UC Regents, spoke during **CALIFORNIA BETA'S** scholarship dinner about the power of women and the importance of Greek affiliation. Odessa spoke fondly of her Greek experience at Tennessee State University and wowed the audience, which included University of California, Berkeley graduate student instructors and professors, with her amazing stories of sisterhood.

**TENNESSEE BETAS** at Vanderbilt University visited the Bill Wilkerson Center, their local philanthropy, to hear three patients tell of the accidents which led them to need brain therapy, the trials and challenges they experienced throughout the rehabilitation process, and the remarkable progress they were able to make because of the center.

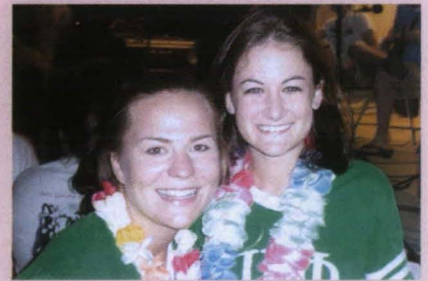
**ILLINOIS ZETAS** at the University of Illinois learned about eating disorders from Juliet Funt, the daughter of Allen Funt, the creator of "Candid Camera." Juliet struggled with eating disorders her whole life, fluctuating between high and dangerously low weights. Now at a stable weight, Juliet talks across the country about the psychological and emotional cravings that stimulate eating disorders.



Ohio Eta chapter members heard a unique talk about alcohol and drugs by Dr. Kennedy, a Denison University psychology professor with a concentration in psychopharmacology. Dr. Kennedy aimed the conversation and advice toward young women and the dangers that drugs and alcohol pose to their bodies.



Mississippi Betas participated in the University of Mississippi's Worldfest, a festival to celebrate the diversity on campus. International students presented information about their country of origin to students through informational and food booths.



Georgia Alphas at the University of Georgia participated in Relay for Life. Festivities ranged from speakers to local bands to a "Locks of Love" tent where volunteers from a local salon cut hair to be made into wigs for children with cancer.



Florida Deltas joined other students at the University of Florida and residents of the community to hear former president, Bill Clinton, speak about current political issues facing the nation.



University of Utah Greeks, including Utah Alpha, enjoyed listening to Will Keim, a motivational speaker. He gave a refreshing speech about the importance of scholarship, how to be a good student, and what it means to be a sorority sister or fraternity brother.



The University of Arizona's Panhellenic Association hosted a new member symposium for all new female Greek members on campus. The event, attended by Arizona Alphas, helped new members understand what the Greek community was all about.



At the University of Idaho, Idaho Alpha's Risk Management Chairman Catherine Thiessen arranged a presentation provided by Planned Parenthood of Washington State. Above, Katie Guho prepares for the risk management seminar.



California Zetas have been participating in a series of activities put on by the University of California, Santa Barbara's Student Health Center aimed at promoting health and safety within the Greek community.

NEW YORK DELTAS took advantage of nutritionist Carolyn Hodges', RD, seminar on healthy eating, which was open to all Cornell University sorority members. Carolyn spoke about the importance of developing a healthy body image.

CALIFORNIA ETAS proudly participated in Seeking Alliances through Leadership and Diversity (S.A.L.A.D.) at the University of California, Irvine. Representatives from the chapter, with other fraternity and sorority leaders at UCI's Cross Cultural Center, discussed teambuilding, perception of Greeks, and current events in the Greek community. Twenty-30 Greek organizations participated in the event.

OHIO ZETA members attended Zeta Tau Alpha's breast cancer awareness presentation at Miami University in support of the sorority's national philanthropy, Susan G. Komen's Breast Cancer Foundation.

Twenty-two years ago, Southern Methodist University inaugurated the Willis M. Tate Distinguished Lecture Series. Since then, many of the finest minds in the world have shared their unique perspectives with the people of Dallas, Texas. Recently, SMU proudly hosted Vice President Dick Cheney. TEXAS BETA members helped with the event through organizing parts of it, handing out programs and attending.

# AMY BURNHAM ONKEN AWARD

Originally presented in 1935, this award is named for Amy Burnham Onken, Grand President from 1921 to 1952. The award recognizes a senior who demonstrates outstanding participation and leadership skills. Winners are selected based on scholarship, service to the Fraternity and participation in student activities.

## THIS YEAR'S WINNER



JESSICA NAJJAR  
Alabama Beta  
University of Alabama  
Theta Province



JENNIFER WILLIAMS  
Connecticut Alpha  
University of Connecticut  
Alpha Province



TALITHA GREENWOOD  
Ontario Alpha  
University of Toronto  
Beta Province



YASMIN DELIZ  
Pennsylvania Kappa  
Lehigh University  
Gamma Province



AMANDA WEIGEL  
Pennsylvania Gamma  
Dickinson College  
Delta Province



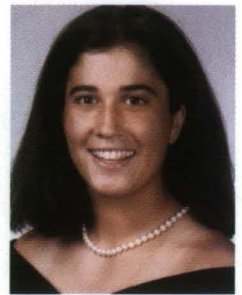
MEGHAN STEELE  
Virginia Zeta  
Virginia Polytechnic Inst.  
& State University  
Epsilon Province



SARA MALLORY  
North Carolina Alpha  
University of North  
Carolina  
Eta Province



FAITH JORDAN  
Florida Beta  
Florida State University  
Iota Province



JENNA ROBISON  
Michigan Alpha  
Hillsdale College  
Kappa Province



DANIELLE SIELATYCKI  
Ohio Zeta  
Miami University  
Lambda II Province



CHRISTINE BOJANOWSKI  
Tennessee Beta  
Vanderbilt University  
Mu Province



ABIGAIL HONAKER  
Indiana Theta  
Valparaiso University  
Nu Province



KERRY O'CONNOR  
Indiana Gamma  
Butler University  
Xi Province



JODI FEARDAY  
Illinois Eta  
Millikin University  
Omicron Province



DANIELLE BROWN  
Louisiana Alpha  
Tulane University-  
Newcomb College  
Pi Province



JACQUELINE BRITTAIN  
Iowa Beta  
Simpson College  
Tau Province



JESSICA SPEED  
Texas Epsilon  
University of North Texas  
Phi Province

## COLLEGIATE NEWS



ASHLEY WATKINS  
Texas Zeta  
Baylor University  
Chi Province



OLIVIA HARREN  
Colorado Delta  
Colorado School of  
Mines  
Psi Province



CRYSTAL LEFF  
New Mexico Beta  
New Mexico State  
University  
Omega Province



MAGGIE MACHEN  
Utah Alpha  
University of Utah  
Alpha-Beta Province



TIFFANY MACKEY  
Idaho Alpha  
University of Idaho  
Alpha-Gamma Province



LESLEY DAVIS  
Nevada Alpha  
University of Nevada  
Alpha-Delta Province



MELYNDA BARNES  
California Alpha  
Stanford University  
Alpha-Epsilon Province



CHRISTY HUNTER  
California Mu  
Pepperdine University  
Alpha-Zeta Province

NOT PICTURED:  
MACKENZIE KORHN  
Ohio Eta  
Denison University  
Lambda I Province

ALISA HEITZ  
Wisconsin Delta  
Marquette University  
Rho Province

KATHLEEN TALBOT  
Nebraska Gamma  
Creighton University  
Sigma Province

KATRINA JOHNSON  
Missouri Beta  
Washington University  
Upsilon Province

JILL MCQUIDDY  
California Epsilon  
San Diego State University  
Alpha-Eta Province

## CHAPTER SERVICE AWARD

The Chapter Service Award recognizes individuals for outstanding leadership in the chapter, responsibility, dependability, initiative, and contribution to the chapter's spirit and chapter unity. The award has been given since 1956.

### THIS YEAR'S WINNER



ANNA SMITH  
New York Epsilon  
Rensselaer Polytechnic  
Institute  
Alpha Province



EILEEN HARTUNIAN  
Ontario Gamma  
University of Guelph  
Beta Province



CORY DELAFIELD  
Pennsylvania Eta  
Lafayette College  
Gamma Province



CAROLYN CLEMENTS  
Virginia Eta  
University of Richmond  
Zeta Province



NOEL FEMINELLA  
Pennsylvania Gamma  
Dickinson College  
Delta Province



EMILY KLOEBLEN  
North Carolina Beta  
Duke University  
Eta Province



KATHRYN MCGAW  
Georgia Alpha  
University of Georgia  
Theta Province



SUSAN PERNOUD  
Florida Alpha  
Stetson University  
Iota Province



ASHLEY MORRILL  
Michigan Epsilon  
Western Michigan  
University  
Kappa Province





KATHERINE RASMUSSEN  
Ohio Beta  
Ohio State University  
Lambda I Province



ALLISON BISIG  
Ohio Iota  
University of Dayton  
Lambda II Province



DANA AYNES  
Kentucky Beta  
University of Kentucky  
Mu Province



JAMIE JENNINGS  
Illinois Zeta  
University of Illinois  
Nu Province



ANNE PLYMATE  
Indiana Epsilon  
DePauw University  
Xi Province



JENNIFER NENDZA  
Illinois Alpha  
Monmouth College  
Omicron Province



EMORY MCGINNIS  
Mississippi Beta  
University of Mississippi  
Pi Province



APRIL CLAESON  
Wisconsin Alpha  
University of Wisconsin  
Rho Province



DIXIE ROUNDS  
South Dakota Alpha  
University of South  
Dakota  
Sigma Province



AMY SIRIANNI  
Iowa Beta  
Simpson College  
Tau Province



EMILY VREELAND  
Missouri Alpha  
University of Missouri  
Upsilon Province



LAURA SNIDER  
Texas Gamma  
Texas Tech University  
Phi Province



HOLLIS SMITH  
Texas Eta  
Texas A&M University  
Chi Province



LAUREN RUDOLPH  
Colorado Alpha  
University of Colorado  
Psi Province



RYANN COLLARD  
New Mexico Alpha  
University of New Mexico  
Omega Province



ERIN LARSON  
Alberta Alpha  
University of Alberta  
Alpha-Beta Province



KELSEY JENSEN  
Oregon Alpha  
University of Oregon  
Alpha-Delta Province



JESSICA SMITH  
California Theta  
University of California,  
Davis  
Alpha-Epsilon Province



ASHLEY WEITZMAN  
California Mu  
Pepperdine University  
Alpha-Zeta Province

NOT PICTURED:  
ELIZABETH MITCHELL  
Virginia Epsilon  
University of Virginia  
Epsilon Province

MALISSA ROBERTSON  
Washington Gamma  
University of Puget Sound  
Alpha-Gamma Province

TALIA NIKOLAO  
California Eta  
University of California, Irvine  
Alpha-Eta Province

**Great Gift Ideas!**  
 Please order by  
 November 15th to ensure holiday delivery!



#PMD117  
Snake Chain  
GF \$20.00

#PMD167  
Small Toggle Bracelet  
SS \$22.00

#PMD148  
Figaro Chain  
SS \$20.00

#PMD174  
CZ Arrow Charm  
10K \$250.00  
(Chain sold separately)

#PMD178  
Heart & Arrow  
Necklace  
SS \$35.00

#PMD179  
Pearl & Garnet Bracelet  
w/SS Crest Charm  
\$35.00

#PMD173  
CZ Arrow Charm  
SS \$150.00  
(Chain sold separately)

**NEW ADDITIONS!**

**PI PHI'S FALL COLLECTION 2003**



#MD208  
Diamond Badge  
10K \$299.00

#PMD186  
Garnet Crest Ring  
10K \$225.00

#PMD185  
Aquamarine Crest Ring  
SS \$150.00

#PMD181  
Garnet Slider  
Necklace  
SS \$99.00

#MD311  
Aquamarine & Garnet Badge  
w/Diamond Point  
10K \$180.00

#MD910  
Pierced Crest Guard  
10K \$23.00

#PDK1 President Dangle  
10K \$19.50

#PD1 GG \$10.50

#PMD182 Aquamarine Slider Necklace  
SS \$99.00

#PMD183 CZ Slider Necklace  
SS \$99.00  
(not shown)

Oval Incised Ring  
#PMD144 SS \$70.00  
#PMD140 10K \$155.00

**GREAT GIFT IDEAS!**

Mini Monogram Ring  
#PMD132 SS \$50.00  
#PMD133 10K \$95.00

#PMD180  
Bracelet  
w/Heart Charm  
SS \$65.00

#PMD124  
Swirl Ring w/Garnets  
SS \$85.00

THE COMPLETE COLLECTION OF OFFICIAL JEWELRY IS AVAILABLE FOR VIEWING AND ORDERING ONLINE AT OUR WEBSITE.

PLEASE CALL TO INQUIRE ABOUT SPECIAL ORDER JEWELRY, OR TO REQUEST A BROCHURE.

**To Order Call: 1.800.322.1867**

Hours: Monday-Friday: 8:00am-5:00pm CST

[www.pibetaphi.org](http://www.pibetaphi.org)

PI Beta Phi Fraternity 1154 Town and Country Commons Drive Town and Country, MO 63017

Not all ring sizes are stocked. Order early for holiday gifts.

*Masters*  
OF DESIGN

Official Jeweler to PI Beta Phi

# In Memoriam

**ALABAMA BETA**

Juanita "Nita" Rucker Cavanaugh, 1950; February 2003

Judith Keister Klyce, 1965; April 2003  
Marilyn Louise Olson, 1965; October 2002

**ARIZONA ALPHA**

Marilyn Tench Alexander, 1955; March 2003

**ARIZONA BETA**

Vicki Madson Looman, 1968; May 2003

**ARKANSAS ALPHA**

Elise Bedwell Ross, 1976; April 2003

**CALIFORNIA GAMMA**

Eileen Holland Hodge, 1944; April 2003

**CALIFORNIA DELTA**

Genevieve Christopher Roberts, 1949; May 2003  
Allyn Smith Simmons, 1949; May 2003

**CALIFORNIA EPSILON**

Grace Bentley Allen, 1949; October 2002  
Margaret McKinney Burgert, 1949; August 2002

**CALIFORNIA ZETA**

Dorothy May Gibson, 1951; April 2003

**COLORADO ALPHA**

Joan Fitzgerald Rossman, 1941; May 2003

**COLORADO BETA**

Blanche Robertson Norcross, 1941 affiliated  
Iowa Gamma; April 2003

**COLORADO GAMMA**

Jeanne Watson Denson, 1956; April 2003

**CONNECTICUT ALPHA**

Deborah Horowitz Greenberg, 1988; April 2003

**D.C. ALPHA**

Louise Arnold Menefee, 1938; March 2003  
Virginia Tehas, 1936; November 2002

**FLORIDA ALPHA**

Inez Hill Nichols, 1935; May 2003

**ILLINOIS ALPHA**

Sarah "Sally" Wallace Glass, 1943; March 2003  
Margery Litton Schott, 1935; March 2003

**ILLINOIS BETA-DELTA**

Jane Sperry Sherrick, 1938; May 2003

**ILLINOIS ZETA**

Helen Miller Keck, 1928; April 2003

**ILLINOIS ETA**

Margaret Admire Hall, 1937; April 2003

**INDIANA BETA**

Sue Ann Harrell McGuire, 1950; March 2003  
Geraldine Getz Ward, 1938 affiliated Indiana  
Gamma; April 2003

**INDIANA GAMMA**

Ruth Ann Thomas Fisher Cummins, 1948; April 2003

Marjorie McElroy Mullen, 1927; May 2003

**INDIANA DELTA**

Bernice Baugh, 1927; April 2003

**IOWA GAMMA**

Dorothy Roost Bates, 1938; May 2003  
Jean Cruikshank Kline, 1935; April 2003

**IOWA ZETA**

Sarah Bailey Roberts, 1942; October 2002

**KANSAS ALPHA**

Virginia Wilber Bolin, 1928; August 2002

**KANSAS BETA**

June Fleming Wilkerson, 1936; May 2002

**LOUISIANA ALPHA**

Josephine (Pimmie) Spencer Tucker, 1934;  
May 2003

**LOUISIANA BETA**

Sharyn McDowell Michaelson, 1966; February 2003

**MARYLAND ALPHA**

Katharyn Price Johnson, 1916; February 2003

**MICHIGAN ALPHA**

Ida Jane Spicer Sharpe, 1935; February 2003

**MINNESOTA ALPHA**

Kerry Kokesh Diepholz, 1976; March 2003

**MISSOURI ALPHA**

Alice Maughs Dale, 1937; September 2002  
Ann Masek Scott, 1947; February 2003

**MISSOURI BETA**

Ellen Fisher Chamberlain, 1933; April 2003  
Jo Anne Bebermeyer Kindorf, 1950; April 2003  
Mary Jane Richards Moise, 1929; May 2003  
Helen Louise Speer, 1969; April 2003

**NEBRASKA BETA**

Marion Wilson Mossman, 1934; May 2003

**NEVADA ALPHA**

Betty Grutt Burgess, 1938; May 2003

**NEW MEXICO ALPHA**

Judy Mincey Paynter, 1956; April 2003

**NORTH CAROLINA ALPHA**

Anne Straub Bishopric, 1943; April 2003  
Adelaide Linton Cartier, 1938; July 2002  
Elsa Winters March, 1938; May 2003

**NORTH CAROLINA BETA**

Nina Westwood Barry, 1941; April 2003

**OHIO ALPHA**

Mary Elizabeth (Betty) Force Williams, 1931;  
April 2003

**OHIO BETA**

Mary Alice "Betty" Thompson Esselstyn, 1941;  
March 2003

Barbara Close James, 1945; April 2003

**OHIO DELTA**

Shirlee Skelton Dalton, 1937; October 2002  
Ohio Epsilon

Joanne Birkenkamp Finucan, 1947; January 2003  
Marilyn Shuey Yark, 1945; May 2003

**OKLAHOMA ALPHA**

Frances Finley Ferguson, 1935; May 2003  
Georgia Sue Crossland Vaughn, 1950; March 2003

**OKLAHOMA BETA**

Jean Orr Donaldson, 1939; May 2003  
Betty Merveldt Smith, 1948; April 2003

**OREGON BETA**

Elizabeth Robley Knutsen, 1928; April 2003

**PENNSYLVANIA BETA**

Grace Mathewson Van Lengen, 1928; December 2002

**TEXAS ALPHA**

Katherine Booty Doherty, 1939; March 2003  
Jeanne Tyrrell Eastman, 1952; April 2003  
Elizabeth Jeanne Gannon Hunt, 1939; February 2003  
Jeanne Schneider Park, 1939; April 2003

**TEXAS BETA**

Barbara McWilliams Allen, 1951; March 2003  
Catharine Brannin Templeton, 1925; April 2003

**VIRGINIA GAMMA**

Daphne McGavack Durant, 1938; April 2003

**WEST VIRGINIA ALPHA**

Marjorie Annon Marsteller, 1939; August 2002  
Elizabeth Aronson Thompson, 1942; August 2002

**WASHINGTON ALPHA**

Ella McBride Crowl, 1941; April 2003  
Julianna Neu Felt, 1934; April 2003

**WASHINGTON BETA**

Ruth Swann Goddard, 1932; March 2003  
Kathrine Gray Miles, 1940; January 2003

**WASHINGTON GAMMA**

Barbara "Bobbi" Brown Johnsen, 1962; April 2003

**WISCONSIN ALPHA**

Carol Heiss Lazar, 1951; January 2003  
Charmion Siegner Taylor, 1951; June 2002

# News & Notes

## NEW NPC TERMINOLOGY

During convention, new terminology was officially adopted by Pi Beta Phi for use in its publications, on campus and in alumnae clubs.

Rush is now Recruitment  
Pledge is now New Member  
Actives are now Initiated Members



## A GREAT HONOR

The Fraternity Executive Directors Association (FEA) gave Pennsylvania Beta Jean Wirths Scott the Distinguished Service Award at the association's annual conference this year. The award is presented to individuals "who have contributed outstanding service in the betterment of all college fraternal organizations," through such accomplishments as "lifelong and selfless work on behalf of his/her Fraternity and the interfraternity world and serves as an example for all to follow."

Jean served on Grand Council for 12 years, including six as Grand President. During her 12 years on Council, Jean was instrumental in developing programming aimed at

## POSSIBLE NEW ALUMNAE POCKET

If you live in the Fort Lauderdale, Florida area and are wanting to get involved in a Pi Phi alumnae group, here's your chance! Members in the area are in the process of starting a pocket and need to know if you are interested in joining them as a charter member. For more information please contact:

Pennsylvania Zeta Gina Marchando  
2640 S. University Drive, Apt. #206  
Davie, Florida 33328  
gmarchando@yahoo.com

**Former FEA president Theta Chi David Westol and current president Lambda Chi Alpha Thomas Helmbock present Jean Scott with FEA's Distinguished Service Award.**

maintaining open lines of communication and abolishing hazing. She was essential in the installation of nine additional Pi Phi chapters during her tenure. She has been a delegate to the National Panhellenic Conference (NPC) since 1985, serving on the Executive Committee from 1991-1997. Jean served as Chairman of the Conference in 1995-1997 and Chairman of the NPC Public Relations Committee from 1997-2001. She has served as President of the NPC Foundation from 1997-present.

Jean has been contributing to the Greek community for more than 20 years as a volunteer. She has visited more than 100 campuses in the United States and Canada conducting workshops and special programs for undergraduates and alumnae. She has shared her belief in the need to work with higher education to produce well-rounded students in areas of social, moral and academic development. The lives she has touched across the years have been enriched by knowing and working with her.

## UPCOMING ANNIVERSARIES

Pennsylvania Epsilon is proud to announce the celebration of its 50th Anniversary with a Pennsylvania Epsilon Alumnae Reunion. The celebration will take place November 8, 2003 at the Nittany Lion Inn Grand Ball Room in State College, Pennsylvania. Current Pennsylvania Epsilon collegians are looking forward to sharing good food, memories and laughter with alumnae.

Pennsylvania Gamma will be holding a Centennial Celebration Saturday, May 1, 2004 at Dickinson College in Carlisle, Pennsylvania. The events start at noon with an open house at the chapter's apartment. At 5 p.m. everyone will begin to meet in the Holland Union Building followed by a formal dinner at 6 p.m. in the Social Hall. For additional information look for an invitation, which will be mailed after the holidays, or contact Karen Neely Faryniak at faryniak@dickinson.edu.

## HAZING HOTLINE

Do you think hazing is taking place in a chapter? Concerned collegians, alumnae, parents and administrators please call to report any hazing activities. The Pi Beta Phi Hazing Hotline is 800-320-1867.

## ARROW CONTRIBUTIONS

Photos and artwork given to *The Arrow* for publication are property of the Fraternity and subject to use in all Pi Beta Phi publications, including the Web site.

## PI PHI EXPRESS

Check out great fall Pi Phi merchandise at [www.pibetaphi.org](http://www.pibetaphi.org)!

**LEADERSHIP OPPORTUNITIES**

In spring 2004, the Fraternity will hold elections for all Alumnae Province Presidents (APPs) and Collegiate Province Presidents (CPPs). Although previous officer experience is not required, it is helpful. Training is provided.

What are the qualifications needed to serve as a province officer?

- Be an alumna in good standing with the Fraternity.
- Be a values-driven individual known for high personal and professional standards.
- Be a good oral communicator whether conversing with an individual or speaking to a group.
- Be a good writer, skilled in using modern technology.
- Be a team player with the ability to step up to coaching when the situation warrants.
- Be a forward thinker and mentor demonstrating Fraternity values by example.

Benefits of being an APP or CPP include attending convention, assisting with regional workshops, making new friends, the support of Grand Council and Headquarters staff, and the satisfaction of working with collegians and alumnae.

All province officers will be slated, but due to constitutional term limits, there will be vacancies in Phi (Oklahoma/Texas) collegiate province and the following alumnae provinces: Alpha (New England); Beta (New Jersey/New York); Theta (Michigan); Iota (Ohio); Mu (Chicago Area); Alpha-Beta (Oregon/Alberta, Canada); Alpha-Delta (Los Angeles area); and Alpha-Epsilon (Southern California and Arizona). "There is currently a vacancy in the Lambda II (Ohio) collegiate province." Other vacancies may occur before the first of the year.

If you are interested in serving Pi Beta Phi as a province officer or know someone who would be a strong officer, please complete the form below. If you would like more information about these volunteer positions, contact Nominating Committee Chairman Mary Lu Meixell (nomchair@pibetaphi.org).

- .....
- I would like to be considered for the position of province officer. Circle one:            APP      CPP
- I recommend the following Pi Phi for consideration as a province officer. Circle one:            APP      CPP

Name: \_\_\_\_\_ Chapter of Initiation: \_\_\_\_\_

Address: \_\_\_\_\_

Phone (with area code): \_\_\_\_\_

If you are submitting the name of someone other than yourself, please give your name and phone number:  
 \_\_\_\_\_

List all Pi Beta Phi collegiate/alumnae offices, awards, recognitions, etc. \_\_\_\_\_  
 \_\_\_\_\_

List qualifications/experiences that make you or the person you are recommending a good candidate.  
 \_\_\_\_\_  
 \_\_\_\_\_

Please return this form by November 15, 2003 to: Nominating Committee Chairman, Pi Beta Phi Headquarters, 1154 Town & Country Commons Drive, Town & Country, Missouri 63017.

**A FINE FAREWELL**

You may have noticed that long-time *Arrow* editor, Elizabeth Gilkison Cannon's name is missing from this issue's Table of Contents. This summer, Libby left Pi Beta Phi to teach writing classes at a local community college. Libby served the Fraternity as *The Arrow's* first assistant editor for five and a half years and then as editor for six years. Over the last 11 and a half years, she has worked on more than 40 issues of the magazine. Libby's contagious upbeat personality and daily dedication to the Fraternity will be missed by those who worked with her.

# What are you doing after graduation?



Graduate Consultants at the 2003 Convention in Anaheim, California.

## Pi Phi has a job for you!

Join the 2004–05 Graduate Consultant team and interact with collegians while traveling throughout the United States and Canada. For application information visit [www.pibetaphi.org](http://www.pibetaphi.org), check with your chapter president or call Pi Beta Phi Headquarters at 636–256–0680.

### HAVE YOU MOVED OR CHANGED YOUR NAME?

Help us keep our database updated. Clip this form, place in a stamped envelope and send to: Pi Beta Phi Headquarters, 1154 Town & Country Commons Drive, Town & Country, MO 63017.

Please print changes:

Initiated Name (first/middle/maiden)

Name (first/maiden/last)

New Address

City/State/Zip

Phone Number

E-mail

Chapter and Year of Initiation

If you are an officer in the Fraternity, please give title so that we may update officer lists.

PI BETA PHI FRATERNITY  
1154 TOWN & COUNTRY COMMONS DRIVE  
TOWN & COUNTRY, MO 63017

CHANGE SERVICE REQUESTED

NONPROFIT  
ORGANIZATION  
U.S. POSTAGE  
PAID  
Dulles, VA  
PERMIT NO. 490