

# *The* OF PI BETA PHI *Arrow*

## Fair Game

The Impact of Title IX  
on Women in Sports pg 4

Pi Beta Phi Installs  
New York Eta pg 10



# Hazing is Wrong!

What is hazing? Hazing is any activity expected of someone who is joining or participating in a group that humiliates, degrades, abuses or endangers them regardless of a person's willingness to participate.



EMILY RUSSELL TARR  
Texas Beta  
Grand President

Elizabeth J. Allan, Ph.D., and Mary Madden, Ph.D., both associate professors at University of Maine College of Education and Human Development, have completed the most comprehensive examination of student hazing to date, “The National Study of Student Hazing.” The study surveyed more than 11,000 students at 53 colleges and universities as well as more than 300 interviews with student personnel. Findings from the study give significant insight into the hazing culture.

Hazing has been a problem for many years, but until recently, has been largely overlooked. Athletic teams and Greek organizations often are stereotyped as groups who routinely haze, but information about marching bands, theatre groups, church groups, club sports, dorm groups and the military are also in the study.

*Some of Dr. Allan's findings are as follows:*

- More than half of college students involved in clubs, teams and organizations experience hazing.
- Alcohol consumption, isolation and sleep deprivation are some of the common hazing practices among student groups.
- Knowledge of hazing extends beyond student groups engaging in the behavior. Pictures are often posted on Web sites of hazing activities.
- More students perceive positive rather than negative outcomes of hazing. They feel that their actions are justified based on the fallacy that hazing promotes unity.

One finding I find particularly troubling is 47 percent of the study's respondents experienced hazing prior to college. These same students also recognize hazing as part of the campus culture and report that prevention efforts of campus groups and universities primarily focus on the “hazing is not tolerated” approach. While these students have a clear understanding that hazing is not acceptable, they continue to haze others and be victims of hazing.

Hazing is a complex issue interfering with the physical and mental health of students, causing some to carry emotional scars for a lifetime. Data clearly supports that hazing is woven into the fabric of student life and campus culture in colleges and universities. Hazing defies Pi Phi values. We must partner with universities, campus organizations and other fraternal groups to eliminate hazing.

Ring Ching,

EMILY RUSSELL TARR

*Editor's Note: Dr. Mary Madden, Ph.D., will be a featured speaker at the 67<sup>th</sup> Biennial Convention in Texas.*



# The OF PI BETA PHI Arrow



## Features

- 4** Fair Game — The Impact of Title IX on Women in Sports
- 10** Pi Beta Phi Installs New York Eta
- 12** A New Legacy Begins at Mississippi State
- 18** Pi Phi Collegians Making a Difference:  
The 2008 Philanthropy & Community Service Report
- 19** Meet the Carolyn Helman Lichtenberg Crest Award Winners

## Departments

- 2** From our Readers
- 13** Literacy
- 23** Collegiate News
- 29** Housing
- 30** Convention
- 32** Foundation
- 34** Remember
- 35** Alumnae News
- 40** In her Words
- 41** Reunions & Anniversaries
- 42** Ask the Webmaster
- 43** The “A” List
- 44** In Memoriam
- 46** Pi Phi Express®
- 48** News & Notes

ON THE COVER: She shoots ... she scores! Read about the impact of Title IX on women in sports beginning on Page 4.

*The Arrow of Pi Beta Phi* is published by Pi Beta Phi Fraternity, 1154 Town & Country Commons Drive, Town & Country, Missouri 63017. POSTMASTER: Send address changes to *The Arrow of Pi Beta Phi*, 1154 Town & Country Commons Drive, Town & Country, Missouri 63017.



Member Fraternity Communications Association

# From our Readers



## EDITOR

Jennifer Whittom  
editor@pibetaphi.org

## EDITORIAL STAFF

Eily Cummings  
eily@pibetaphi.org

Juliette Losapio  
thearrow@pibetaphi.org

## DIRECTOR OF MARKETING & COMMUNICATIONS

Wendy Woolard Drochelmann  
wendy@pibetaphi.org

## COPY DEADLINES

Summer — May 1  
Fall — August 1  
Winter — November 1  
Spring — February 1

## PI BETA PHI HEADQUARTERS

1154 Town & Country Commons Drive  
Town & Country, Missouri 63017  
(636) 256-0680  
FAX (636) 256-8095  
headquarters@pibetaphi.org  
www.pibetaphi.org

## PI BETA PHI FRATERNITY

**ΠΒΦ**

Founded 1867

## FOUNDERS

Emma Brownlee Kilgore  
Margaret Campbell  
Libbie Brook Gaddis  
Ada Bruen Grier  
Clara Brownlee Hutchinson  
Fannie Whitenack Libbey  
Rosa Moore  
Jennie Nicol, M.D.  
Inez Smith Soule  
Fannie Thomson  
Jennie Horne Turnbull  
Nancy Black Wallace

## MISSION STATEMENT

The mission of Pi Beta Phi Fraternity for women is to promote friendship, develop women of intellect and integrity, cultivate leadership potential and enrich lives through community service.

Thank you for the article on Eve Carson, but please print in your next edition she was the student body president and a very influential leader at the University of North Carolina. Her death was a great loss to her generation, as she would have accomplished much; her death was a greater loss to her family who will miss her forever.

MADELINE BARTLING CAINS

Missouri Gamma — Chapel Hill, North Carolina

Congratulations on a fine Winter 2009 edition of *The Arrow*. I enjoyed learning more about Pi Phi's "Cookie Shine" tradition and applaud your efforts focusing on literacy.

Tom Olver

Beta Theta Pi Editor

President of Fraternity Communications Association

## Celebrating a Legacy

I just wanted to let you know how magical a weekend I had attending my daughter Kylie's initiation at New York University. I surprised her with help from Kentucky Gamma ALLISON COMMINGS, the resident leadership development consultant. The installation was so special, and it was a true honor to meet these lovely ladies of the charter class of New York Eta. Pi Beta Phi was so dear to me during my college days, and I know it will play a wonderful part in these new angels' lives.

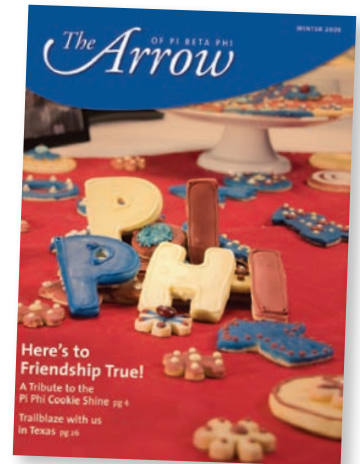
Sincerely,

MAUREEN MALLOY KALL

Florida Beta — Jacksonville, Florida

*Editor's note: Read more about the installation of New York Eta beginning on Page 10.*

**CORRECTION:** Eve Carson was mistakenly listed as having taught science at Clyde Erwin Elementary on Page 14 of the Winter 2009 *Arrow*. Eve taught science at Frank Porter Graham Elementary. *The Arrow* apologizes for the error and regrets any confusion this may have caused.



*We look forward to hearing from you. E-mail comments to the editor at [editor@pibetaphi.org](mailto:editor@pibetaphi.org) or mail them to the Pi Beta Phi Headquarters address listed to the left.*

## The Value of Membership

Recently, my daughter, Virginia Epsilon JACQUE CHEVALIER MINOW, made the following comment to me, “We (at the University of Virginia) didn’t join Pi Phi to just be Pi Phis.”

This statement really resonated with me and should for all Pi Phis because everyone, especially families having to finance a college education, has been affected by the economic crisis.

I took Jacque’s comment to heart. It means the value of membership in Pi Phi has to be worth more than just belonging to a college social sorority. It means you are joining a group that will compliment your academic pursuits and will enlarge your world on your campus and beyond. It means you will find role models and mentors, and that networking opportunities are available to support your professional and personal goals long after college. Your leadership skills will develop and you will be asked to contribute to society locally and globally. In other words, your Pi Phi membership will position you to move forward and look outward. Joining Pi Phi is a springboard to fulfilling your potential.

What I’ve just described is our value proposition. The phrase “value proposition” has been dismissed as a corporate phrase — too business-like and not applicable to a friendship-based organization. However, the phrase is applicable whenever members are involved. Today, more than ever, Pi Phi has to deliver on its value proposition in order to compete with the hearts, time and money of college women. Faced with the hard realities of limited budgets, Pi Phi must continue to be a good investment for our members and their parents. Conversations with parents at the installations of Massachusetts Gamma at Massachusetts Institute of Technology and New York Eta at New York University recently illustrated this to me. To these parents, many of whom were learning about sororities for the first time, Pi Phi is an investment in their daughters’ futures. When that value is at stake, Pi Phi could be an added expense our members and their parents choose to eliminate.

It’s tempting to compare the current economic crisis to the Great Depression. While there are many differences between crises now and in the 1930s, it is reassuring to note even during the Depression Pi Phi chartered eight new chapters. However, it also saw a 50 percent decrease of the new chapter growth experienced during the Roaring ’20s. So there is hope, but also caution. The Fraternity cannot lose sight of the financial pressures our collegiate members will face as the economy struggles to mend itself. Even when it stabilizes, prospective members and their parents still will weigh the value of Pi Phi. Our goal must be to keep that value proposition in the forefront; guiding our decisions so it is obvious to all that membership in Pi Phi is a great investment. It’s a whole lot more than just being a Pi Phi.

In Pi Phi,



KAREN SHELTON CHEVALIER  
Grand Vice President Communications  
California Delta — Annandale, Virginia



KAREN SHELTON CHEVALIER  
California Delta  
Grand Vice President Communications

# Fair Game

## The Impact of Title IX on Women in Sports

By: Eily Cummings

*Things* used to be very different. When a father heard the words, “It’s a girl” in the delivery room, his dreams of having a child who would one day become a standout athlete were crushed. There were no pink Reeboks® for running. Golf gloves didn’t come in purple. And forget about buying those cute Nike® booties and matching pink soccer ball for a new arrival. After all, prior to 1972, the primary physical activities for girls were cheerleading and square dancing. But oh, how far we’ve come ...



Michigan Beta LEE PRICE ARELLANO loved the game of golf from an early age. Her family belonged to a golf club in Ann Arbor, Michigan, where Lee grew up in the 1940s. At that time, women were allowed to only play on “ladies’ day” or during certain times of the day. The club had no junior programs for women, but luckily older women allowed her to join their teams. “I owe a great deal to these women [the ones from the club], one of whom was a Pi Phi,” Lee says.

Lee played golf her sophomore year for the University of Michigan in 1956. Unfortunately, she quickly learned women athletes were treated more like second-class citizens. Lee’s golf team played in competitions, but she remembers the matches being “very low-key and of little significance.” The team had no funding and held no formal practices.

However disheartening and unfair Lee’s story may be, it can be considered a success story for the time period. Lee played golf at the collegiate level, which was rare at most Division I schools. Before 1972, women’s athletic programs received only 2 percent of all athletic funding and received very few, if any, athletic scholarships, making it difficult for women to even play.<sup>1</sup>

For Wisconsin Gamma ELSIE PEDERSEN MUEHLSTEIN, a 1948 graduate from Lawrence University, women's athletics were about pure fun. "There were no organized sports at all for women in those days," Elsie says. "We played other sororities — they were our competition. It was just really for fun, and it was fun." Elsie played team sports all four years of college, but she says there were no athletic scholarships for women.

However, the landscape of women's athletics drastically changed when the United States government created Title IX, Education Amendments of 1972. The Act states, "No person in the United States shall on the basis of sex, be denied the benefits of, or be subjected to discrimination under any education program or activity receiving federal financial assistance."<sup>2</sup>

In 2002, the Act was re-named the Patsy T. Mink Equal Opportunity in Education Act in honor of its principal author, Hawaii congresswoman Patsy Mink. She lobbied for equality because of the discrimination she experienced during her own educational experience. When Patsy applied to medical school, none of the 20 universities she applied to accepted women into their programs. Patsy decided her best chance to fight against discrimination was to attend law school, and in 1965 she became the first congresswoman of color and first woman from the state of Hawaii to be elected.

## What Exactly is Title IX?

"Title IX prohibits sex discrimination in any educational program or activity at any educational institution that is a recipient of federal funds," Women's Sports Foundation Chief Executive Officer Donna Lopiano says. "Athletics, drama, band and other extracurricular student activities are considered to be educational programs under this law. It also prohibits all forms of sex discrimination in federally funded educational institutions, including sexual harassment, discrimination in admissions and counseling and discrimination against married or pregnant students."

In addition, Title IX also has made an impact toward women's equality in other key areas. This includes the right to higher education; a learning environment and standardized testing free of gender bias; educational employment free from discrimination; and the equality of women's high school and collegiate sports programs.

Americans are most familiar with Title IX because of its impact on high school and collegiate athletics. However, the original wording of the amendment does not even mention athletics. Driven by President Jimmy Carter, the U.S. Department of Health, Education and Welfare created the "three-prong test" for institutions' compliance in 1979 when it issued a policy interpretation for Title IX.<sup>3</sup>

**Prong one:** providing athletic opportunities that are substantially proportionate to the student enrollment.

**Prong two:** demonstrate a continual expansion of athletic opportunities for the underrepresented sex.

**Prong three:** full and effective accommodation of the interest and ability of underrepresented sex.

To meet compliance, institutions must meet one of the three prongs. More than two-thirds of all institutions meet compliance on the third prong.

*The health benefits for women as a result of Title IX include increased self-esteem levels, lowered depression rates, decreased chance for obesity and improved bone density.*

## Is the Playing Field Level?

Although Title IX has made a drastic impact on women's equality in the United States, there are still many barriers women face. In 2003, the average salary for a women's basketball coach was \$162,300, compared to \$330,900 for their male counterparts. Currently, women receive \$137 million less in athletic scholarships than men.<sup>4</sup>

Many opponents of Title IX say it is no longer needed in today's society because women are now succeeding in high school and collegiate athletic programs. However, it is only with Title IX's protection that any of this has been possible. Before Title IX, "only one in 27 girls played high school sports."<sup>5</sup> In contrast, by 2005, 41 percent of all high school athletes were women. The statistics show even greater growth at the collegiate level.



Michigan Beta LEE PRICE ARELLANO (center) in the 1956 Ann Arbor, Michigan, Women's Golf Tournament. Lee was the youngest competitor at 18 and was a medalist for the lowest qualifying score.

"The benefits of Title IX have played out in my own family," Oregon Alpha KIM BARGER DURAND says. "My mom was a high school All-American swimmer in the 1960s when it wasn't 'cool' for women to be athletes. There were also no college athletic scholarships for women in those days. With the passage of Title IX in 1972, all that changed. A generation later, my sister went on to earn a full athletic scholarship to college to play the sport she loved and earn her degree. I have gone on to be an athletic administrator in college athletics. It is now 'cool' for women to be athletic, competitive, confident and empowered."

In fact, women have participated in collegiate athletics at a staggering 456 percent more than prior to Title IX. In addition, there are currently 9,101 women's collegiate sports teams.<sup>6</sup> Women are willing and able to play sports, increasing their self-confidence and developing abilities that otherwise would not be developed.

These women are not just participating in athletics but are setting high standards in the classroom as well. According to a 2007 National Collegiate Athletic Association research study on graduation rates of Division I athletes, "female athletes post the highest graduation rates, followed by female students in general." Even female high school athletes are more likely to graduate than those women who do not participate in sports. "Colleges and universities needed to get women into coaching," Iowa Gamma JEANNE FLECK says. "Title IX opened a lot of doors for me. Then it was up to me to prove I was good on my own."



## Who's Helping?

There are several groups that help fund women's athletic programs and promote equality. Two exceptional resources are the Women's Sports Foundation and the American Association of University Women (AAUW). The Women's Sports Foundation was founded by tennis great Billie Jean King. "The Women's Sports Foundation is a tremendous organization," University of Washington's Head Women's Soccer Coach and California Beta LESLE GALLIMORE says. "I wish there was more time for me to get involved on a bigger level with them; hopefully later in my career or after I retire." The Foundation's mission is to advance the lives of girls and women through sports and physical activity. The Foundation is also a leader in the research field.

The AAUW's mission is to advance equity for women and girls through advocacy, education and research. It goes beyond athletics and touches every aspect of a woman's life. The AAUW was founded in 1881, and it promises all members "a community that breaks through educational and economic barriers so that all women have a fair chance."

## Pi Phis Making Their Mark

Today, more than 35 years after Title IX's enactment, young women are growing up in an environment of opportunity and encouragement. A girl born today will grow up in a society more inclined to judge her potential on the basis of her talents, abilities and character — not gender. These same girls will have thousands of notable role models to inspire them. Role models like Michigan Betas LEE PRICE ARELLANO and JANE GRATHWOHL FRAZIER played inter-scholastic sports and were instrumental in establishing women's participation in collegiate athletics. If it weren't for these early efforts from women, especially Pi Phi sisters Lee and Jane, girls today would not know that the world of athletics was fair game for all.



Michigan Betas KATIE JIPPING, LEE PRICE ARELLANO, JANE GRATHWOHL FRAZIER and KATHERINE AXELSEN stand in front of the chapter house at the University of Michigan. The university's athletic department honored Lee and Jane at a 2008 luncheon and presented them with a University of Michigan varsity jacket as well as membership in the Letterwinners M Club.

---

<sup>1</sup> The MARGARET Fund of NWLC and [www.titleIX.info](http://www.titleIX.info).

<sup>2</sup> Title 20 U.S.C. Sections 1681-1688

<sup>3</sup> U.S. Department of Education

<sup>4</sup> American Association of University Women (AAUW)

<sup>5</sup> The MARGARET Fund of NWLC and [www.titleIX.info](http://www.titleIX.info).

<sup>6</sup> Women's Sports Foundation

## Pi Phis in Sports



### JANE GRATHWOHL FRAZIER

Michigan Beta  
University of Michigan Golfer, 1954

**Has there ever been a time when you were told you couldn't play, or when you were treated differently?** My first year at Michigan I was told I could only play at certain times on the university course, and that I must wear shorts or a skirt that covered my knees. In high school the men's golf coach took me with them on the away matches. I played against boys who had not made the team but were still good golfers.

**How did Pi Phi support or impact your decision to be an athlete?** Everyone in the sorority thought it was great I played in the all campus tennis, table tennis and golf tournaments. We also had a sorority basketball team and played against the other sororities.

**Can you speak about the impact Title IX has played in allowing you to reach your athletic and professional goals?** Unfortunately, Title IX didn't come soon enough for me. I think I could have been a better golfer and tennis player had I been allowed to compete through high school and college. It would have made it a lot easier for me to be a female athlete by offering more training, providing equipment and paying the expenses for travel, all of which was done by my parents and myself.



### HELENA HABES

Washington Alpha  
HuskyCase Sports Reporter

**Who or what inspired you to become a sports reporter?** Erin Andrews, the ESPN sports anchor, inspired me. She is talented and classy. In addition to being an innovator, she is a leader outside her job, promoting women in sports.

**How did Pi Phi support or impact your decision to be a sports reporter?** At every football game, my Pi Phi sisters make signs and cheer for me on the field! I am constantly hearing women tell me they are proud of me, and that they've watched my stories. This year, a numerous amount of freshman have approached me as a role model for them to get into the industry. That is the greatest compliment I could receive.

**Has Pi Phi helped prepare you for your career as a sports reporter?** My work as the vice president of philanthropy taught me how to be a leader and get others involved in what I'm doing.

**Do you participate in or support any specific organizations that promote women's athletic programs?** Last year, we decided to promote the Boys and Girls Club as our local organization. The club supports active, healthy lifestyles for young females.



### LAURA DUCKWORTH

Virginia Delta  
Four-Time Virginia State Junior Champion  
in Women's Road Biking

**How did your family support or impact your decision to be an athlete?** My family bought my first road bike for my birthday. They have driven me to races and encouraged me to participate and be better.

**What advice do you have for children who may want to get involved in athletics?** Do not give up if you're having a hard day, or you did not perform well. You can make it better the next time.

**What do you enjoy most about being an athlete?** Having the ability to be unique and knowing how to have sportsmanship.



### DANAKA PORTER

Alberta Alpha  
Canadian Bobsleigh Team

**How did Pi Phi support or impact your decision to be an athlete?** When I was in college my sisters would always come to my varsity events and cheer me on, even at early morning events. I still receive e-mail support, phone calls and even monetary support from my fellow Pi Phis. I couldn't compete for the National Team without the love from my sisters.

**Has Pi Phi helped prepare you for any of your athletic endeavors?** Yes, my sport is built on team spirit and on sticking together through the good and bad. I first saw this camaraderie when I joined Pi Phi. I also learned that the sense of accomplishment when you work as a team is much stronger than when you try to work alone.

**What do you enjoy most about being an athlete?** I enjoy living a healthy lifestyle, being able to have a more flexible time table in my off-season and just having fun. When you work as a team it is much stronger than when you try to work alone.



### LESLE GALLIMORE

California Beta  
University of Washington's Head Women's Soccer Coach

**What or who inspired you to be a soccer coach?** I didn't set out to become a college soccer coach. Soccer just continued to be a huge part of my life. My college coach, Bill Merrell, was a big part of what inspired me to coach. He believed in me, put me in leadership positions and gave me a lot of responsibility.

**Has there ever been a time when you were told you couldn't play or coach, or when you were treated differently because you were a woman?** I have never really felt discriminated against because I am female. Soccer for women was in its infancy in the U.S. when I started playing in third grade. At Cal, we were considered a "club" program with varsity status. We could compete, but we had to fundraise. In retrospect it was great because it put us in leadership roles and made us really earn it.

**What advice do you have for children who may want to get involved in athletics?** My biggest piece of advice is that young people should want to compete in athletics because it is a great way to be fit and healthy. There are great lessons to be learned through competition and hard work, and there are lifelong bonds and friendships to be made.



### KIM BARGER DURAND

Oregon Alpha  
University of Washington's Associate Athletic Director for Student Development

**Who or what inspired you to choose a career in athletic administration?** It was my love for sports and helping others reach their goals. Fabulous women around me supported my goals and made me believe I could impact those around me.

**Has there ever been a time when you were told you couldn't play or coach, or when you were treated differently because you were a woman?** When I became the academic adviser for football student athletes at the University of Kansas in the early 90s, it was very controversial. At the time, there were only a handful of women who worked with Division I football players in the country. I was often second-guessed by coaches and challenged on my decisions or strategies with students. I felt I had to work harder than others to prove that I had intelligence, integrity and could be successful in the role.

**How did Pi Phi support or impact your decision to be an athletic administrator?** I often think my experience is a great example of how Pi Phi connections and mentoring can impact your life long after college. I met Missouri Alpha CHERYL LIGHTFOOT LEVICK, senior associate athletic director at Stanford in the early 1990s. I decided to see if she might be willing to do an informational interview with me. She was one of the most influential women in college athletics at the time. I called a couple of days before my trip, but unfortunately, her schedule was booked for the one day I was going to be in town. However, she told me she prided herself on mentoring women trying to get into the field, so she offered to review my resumé and provide suggestions via fax. I did so and was grateful for any wisdom from this legendary lady.



### JEANNE FLECK

Iowa Gamma  
Fresno State Head Women's Swimming Coach

**How has Pi Phi helped prepare you for your athletic endeavors?** I swam all four years at Iowa State University, and Pi Phi was a great outlet to help keep my life in balance.

**What advice do you have for children who may want to get involved in athletics?** Always believe you can do it if you work hard enough. Nothing can replace hard work and confidence.

**What woman athlete or coach has inspired you the most?** Jean Freeman and Kathy Wickstrand were both coaching in the Big Ten while I was swimming. They were wonderful role models and had a great influence on my life.

**What do you enjoy most about coaching?** Working with the young ladies and watching them change into strong, confident women when they graduate.

# Pi Beta Phi Installs New York Eta in Manhattan

It's official! Pi Beta Phi's 132<sup>nd</sup> chapter is up and running at New York University (NYU). New York Eta initiated 59 new members and was officially installed on January 31, 2009. Fraternity officers, area alumnae, local chapters, parents and NYU faculty participated in the weekend installation festivities.

The weekend was a culmination of the successful fall semester and celebration of Pi Beta Phi — our founders were honored and new members were embraced. It was apparent the lives of New York Eta's charter members have been enriched by Pi Phi.

During the week prior to installation, the colony participated in NYU Continuous Open Bidding (COB) events, successfully pledging 23 new members. The weekend festivities began with the pledging of the newest members and the preparatory service for the soon-to-be members.



NYU Local Installation Committee, from left, Texas Gamma PILAR MUSTAFA, Missouri Alpha RACHEL COHEN, Ohio Eta BETHANY CLEVENSTINE, Illinois Epsilon RACHEL CARPENTER and Oklahoma Beta ASHLEIGH GIBSON. Not pictured: Illinois Iota TRICIA HARRISON KELLEHER.

The entire membership celebrated with its very first Cookie Shine, which included a Bid Day celebration for the COB new members. The room in the student union was at capacity with alumnae and many parents and friends. "It is exciting and rewarding to work with such a diverse group of women at New York Eta," Grand Vice President Programming and New Chapter Assistance Officer LINDA NOEL IBSEN, Colorado Beta, said. "Our chapter at NYU has reached Panhellenic Total of 82 women in four short months and continues to blaze new trails on this urban campus. The excitement of initiation and



New York Eta alumnae initiates from left, JANE WHALEN TAYON and NALINI JURAKHAN DURGANA.

installation weekend, shared with many supportive New York City alumnae, parents and friends, made everyone Pi Phi proud!"

The Saturday morning initiation took place at Ireland House just off Washington Square in Greenwich Village. Almost all of the alumnae who served as "slightly old sisters" were there to support their little sisters. The setting for the Saturday evening banquet was in Battery Park with a breathtaking view of the Statue of Liberty. New York Gamma ELINOR RUTH TATUM served as toastmistress. She welcomed everyone to the banquet and celebrated the diversity of the New York Eta colonizing class. Elinor promised to be a nearby resource and cheerleader for the chapter.

There are four legacies in the charter class of New York Eta including SAMANTHA MERSKI. "Installation meant so much more to me because I could share the experience with my mother, Vermont Beta LISA SARTORELLI MERSKI," Samantha said. "She was overjoyed that she was able to come to everything and be the one who pinned me during initiation. It is an experience both of us won't forget anytime soon."

The campus and community reception was held on Sunday where NYU Fraternity/Sorority Adviser ALLISON HARRIS, Iowa Beta, highlighted the huge impact Pi Phi has had on NYU's Greek community and how proud she is of Pi Phi's success. New York Eta Chapter President ALEXANDRIA NEWTON introduced the newly elected executive council, and she welcomed the Greek community



New York Eta charter members gather for a group photo at their installation banquet, Saturday, January 31, 2009.

and parents and thanked them for their support and encouragement. “If I had one word to describe installation it would be ‘magical,’” Alexandria said. “So many Pi Phis from all over came to New York City to share this memorable weekend with us, which was incredibly humbling.”

“New York Eta has brought such a different dynamic to NYU’s community,” Resident Leadership Development Consultant ALLISON COMMINGS, Kentucky Gamma, said. “By reaching Panhellenic Total in just a few months, our organization has truly proven to be a missing link in the lives of collegiate women in New York City. I’m confident Pi Phi will be a driving force at New York University for years to come.”



Installation weekend attendees kicked off the weekend festivities with a Cookie Shine for the New York Eta new members.

# A New Legacy Begins at Mississippi State

Every Bid Day is exciting and offers promises of new beginnings — a new set of faces, a fresh start. At Mississippi State University (MSU), Bid Day was no exception. Mississippi State faculty and staff, parents, fellow Pi Phis, friends and students gathered to witness the unveiling of Pi Phi's newest chapter, Mississippi Gamma. Pi Beta Phi pledged 72 talented women.

"It is evident how proud the new members are wearing the wine and blue and how excited they are about creating the legacy of Pi Phi at MSU," Grand Vice President Alumnae and New Chapter Assistance Officer MARY LOY TATUM, Oklahoma Beta, said.

University of Memphis, University of Mississippi, University of Southern Mississippi and University of Alabama Pi Phis excitedly chanted Pi-Beta-Phi and greeted the women with a standing ovation. The warm welcome was not contained to just the student union but extended across campus. "The support for the new Pi Phi chapter has been overwhelming and humbling all at once," Co-Resident Leadership Development Consultant MEGAN CAMPBELL, Tennessee Beta, said. Many of the fraternity and sorority houses on campus sported banners welcoming Pi Phi and congratulating its new members.

The MSU Panhellenic community has shown incredible support throughout the entire process, including tabling for Pi Phi leading up to recruitment, wearing "Ask Me about Pi Phi" buttons, acting as recruitment counselors during parties and even performing a skit for the new members during their first meeting.

The new members attended a game night and sisterhood bowling night to spend more time together as well as weekly dinners, speakers on campus, TV nights and Greek competitions. "This time has been really exciting, just getting to know all the girls and bonding together," new member Jodi Webb said.

In addition to friendships, these women are gaining a larger sense of self. New member Mary Meagan Sweatt says her favorite part of Bid Day was the Pledging Ceremony. "I enjoyed the ceremony because I felt like I was beginning to be a part of a ritual that extended beyond me," Mary said.



Mississippi Gamma new members pose for their first group photo on Bid Day.

All the new members, and everyone involved with the new chapter at MSU, look forward to creating a new legacy and history of their own over the years to come. "It is so rewarding to watch these women as they begin to draw closer to one another and support each other," Co-Resident Leadership Development Consultant JESSICA HINSON, Arkansas Alpha, said.

Mississippi Gamma celebrated its installation weekend April 3–5, 2009. Look for more details in the *Summer Arrow* and at [www.pibetaphi.org](http://www.pibetaphi.org).

## 2009 Fraternity Day of Service is in the Books

Pi Beta Phi's 2009 Fraternity Day of Service events took place across North America with great success. This year's goal was to decorate 50,000 bookplates. For each bookplate decorated, Pi Beta Phi's literacy partner, First Book®, will place bookplates into brand-new books and donate them to children in need.

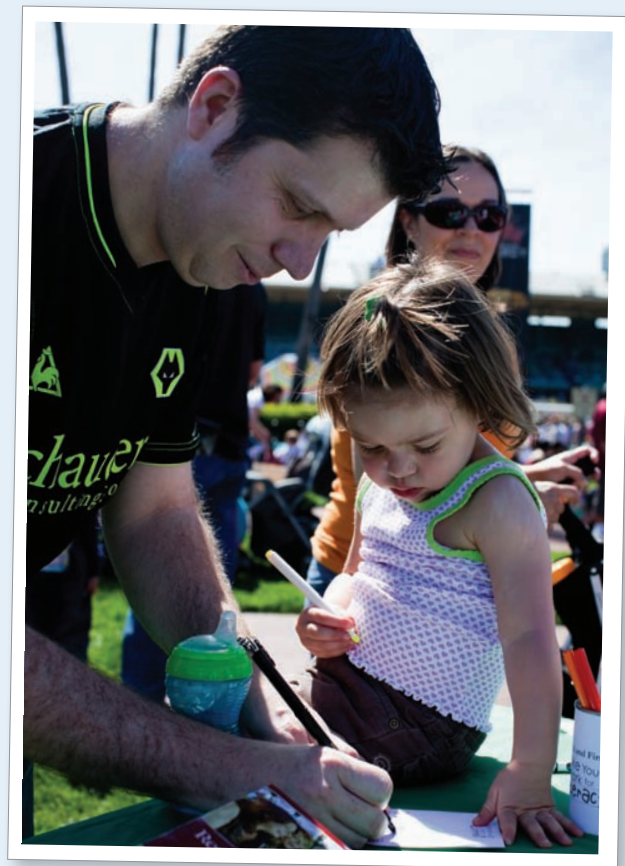
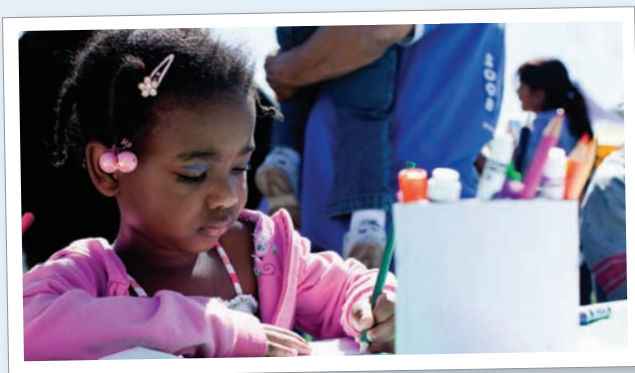
The response Pi Phi received from its members to increase literacy awareness through this year's Fraternity Day of Service events was unbelievable. Headquarters filled several requests from chapters and alumnae organizations needing additional bookplates for their events. Some groups began planning for their events as early as last fall.



### A Race to Remember

On March 1, the Pi Beta Phi Southern California Area Council (SCAC) and six area chapters put together an amazing Fraternity Day of Service event in Arcadia, California. Pi Phis from across the area came together to celebrate literacy.

The event was held at the Santa Anita Racetrack — the same track where the blockbuster movie “Seabiscuit” was filmed. It was Family Fun Day at the races, and the infield was dedicated to serving children, who could participate in all sorts of carnival-type activities. The theme for Family Fun Day was “A Snow Day” where children were able to enjoy winter activities, including sledding.



Family Fun Day attendees decorated more than 2,000 bookplates.



Fraternity Day of Service attendees spent the afternoon socializing with fellow Pi Phis, enjoying a barbecue lunch and raising awareness for literacy.



Officers from Alumnae Region Six are pictured from left, California Eta TONI MARTINOVICH, New Mexico Beta LISA REDE ROMAN and Kansas Beta PATTY DAVISSON BROWN.

SCAC reserved a large area in the infield for Pi Phis and their families to gather. In addition, local chapters manned a Fraternity Day of Service table near the children’s activity area. Chapter members encouraged all children in the area to decorate bookplates. The table was set up at 11:30 a.m. and had a steady flow of kids until 3 p.m. Children and parents had fun decorating bookplates knowing a child in need would receive a brand-new book for their work. They also enjoyed having their photo taken with Cat in the Hat®. By the end of the day, more than 2,000 bookplates were decorated! Back in the picnic area, attendees enjoyed lunch, prizes, a hat contest, a First Book Speed Read™ and the horse races.

“This year has proven, once again, that Fraternity Day of Service can be a success for both alumnae and collegiate members,” Alumnae Region Six Membership Specialist LISA REDE ROMAN, New Mexico Beta, said. “It has shown that by collaborating to decorate bookplates, a single day event will not only unite us as Pi Phi but touch so many children and work toward increasing literacy awareness. I’m so proud of our region and Pi Phi.”



# Make Your Mark for Literacy

Under the direction of Alumnae Region Six Programming Specialist TONI MARTINOVICH, California Eta, the Event Planning Committee began planning in the fall for the Fraternity Day of Service. Toni's right-hand angels were Wisconsin Beta ROBERTA BLISS PITTMAN, California Eta CATHY BIRCH DANIEL, Colorado Beta LORNA AUERBACH WHEAT and Kansas Alpha MARTY ROWE HOLLER.

The event was embraced by so many. There is already talk of holding the event next year. "This Fraternity Day of Service event definitely won the blue ribbon," Toni said. "I think one of the best things about the day was the age diversity of attendees. We had many new members and several Golden Arrows come together for a purpose today. We supported our international philanthropy of literacy."



California Eta CATHY BIRCH DANIEL welcomes the Fraternity Day of Service attendees to the Santa Anita Racetrack.



The winning Speed Read team is pictured with California Eta TONI MARTINOVICH.



Chapter members manned a table in a high-traffic area for children to decorate bookplates.

## Arizona Pi Phis Make Their Mark for Literacy

On Saturday, February 28, Arizona alumnae organizations and collegiate chapters collected decorated bookplates at Fraternity Day of Service events throughout the state. Fraternity members invited the public to personalize bookplates at seven Barnes & Noble® bookstores in the Arizona cities of Tucson, Flagstaff, Tempe, Scottsdale, Phoenix, Mesa and Surprise. The Fraternity Day of Service events were open to the public and were held from 10 a.m. to 2 p.m.

The Arizona Area Council began planning these events in October 2008. Securing all of the Barnes & Noble locations was the first and most important step. The team contacted local celebrities to participate, including community leaders, government and university officials, local media personalities, sports celebrities and local artists.

“The response from the community has been wonderful,” Nebraska Beta GINA GARRISON JONES, co-president of Phoenix Alumnae Club, said. “Local children’s authors, Terri Fields and Jennifer Stuart, along with Sheriff Joe Arpaio and Bravo’s 2008 Top Chef Stephanie Izard created celebrity bookplates for the event.”

Pi Phi had several volunteers at each Barnes & Noble location to answer any questions and to help decorate bookplates. To eliminate confusion, the Arizona Area Council also created First Book and Fraternity Day of Service signage for the area around the tables explaining the event.

All of the volunteers’ hard work paid off. The Arizona events were a huge success. The seven locations brought in more than 1,400 bookplates, which means 1,400 brand-new books will be donated to underprivileged children. A teenage girl, while decorating her bookplate, was overheard saying, “This idea is great. It’s so simple and has a big impact.”



Arizona volunteers worked for four hours helping Barnes & Noble patrons decorate bookplates for Pi Phi’s Fraternity Day of Service.



From left, New Mexico Beta HEATHER WILSON MILLER, Nebraska Beta GINA GARRISON JONES, Illinois Theta SARA STEVENS and Ohio Zeta LAURA ECKMAN ATWELL.

# Champions ARE Readers®

Champions are Readers (CAR) is a monthlong reading enrichment program for third-graders developed by Pi Beta Phi in 2003. The easy-to-administer program is designed to supplement reading activities schools already provide. CAR improves reading skills, instills a lifelong love of reading and promotes family literacy.

In 2008, 56 collegiate chapters and 28 alumnae organizations administered the CAR program in schools across North America. Because of their hard work and dedication, more than 5,900 students were given the opportunity to participate.

CAR kits may be ordered through Headquarters and contain enough materials for 25 students. Each child receives a Literacy Workbook, a Scholastic™ book with a personalized bookplate from the chapter or alumnae organization, and a medal to celebrate the completion of the program.

Pi Beta Phi believes if children are champions in reading, they will be champions in life. Order your kit today!



Learn more about the CAR program at [www.pibetaphi.org](http://www.pibetaphi.org).

# Pi Phi Collegians Making a Difference

Philanthropic Pi Phis donated more than 225,000 hours and \$900,000 in 2008.

As Pi Phis, we know sororities provide collegiate women with opportunities for development and growth, especially in giving back to their communities. But exactly how much donated time and money hasn't been tracked in great detail until now. Beginning in 2008, Pi Phi collegiate chapters completed a Philanthropy & Community Service Report for each calendar year. This document, which is reported by each of Pi Phi's 132 chapters, collects data on the total number of community service hours donated, total amount of money raised for non-Pi Phi causes, total amount of money raised for Pi Phi-specific causes and the total amount of fundraising dollars. This data is then provided to the National Panhellenic Conference (NPC), which will track these statistics from each chapter of its 26 member sororities, representing more than 650 college and university campuses.

Pi Phi is proud to report its collegians spent more than 225,000 hours working in their communities, raising more than \$900,000 for causes that matter. Collegians participate in a variety of events including dance marathons, Relay for Life<sup>sm</sup> and Special Olympic activities. Some chapters plan Pi Phi-specific fundraising events such as ArrowOpen (a golf tournament), Pi Phly (a softball tournament) and Arrow Jam (a dance marathon). Read more about the community service and fundraising efforts of our chapters in the Collegiate News section beginning on Page 23.

COMMUNITY SERVICE  
HOURS DONATED  
**225,543**

TOTAL AMOUNT  
RAISED FOR  
NON-PI PHI  
CAUSES  
**\$385,499**

TOTAL AMOUNT  
RAISED FOR  
FIRST  
BOOK<sup>®</sup>  
**\$115,588**

TOTAL AMOUNT RAISED FOR  
ARROWMONT  
**\$102,433**

TOTAL AMOUNT RAISED FOR  
PI PHI FOUNDATION  
**\$329,994**

**\$933,466** TOTAL AMOUNT RAISED BY  
PI PHI COLLEGIANS

# Meet the Carolyn Helman Lichtenberg Crest Award Winners

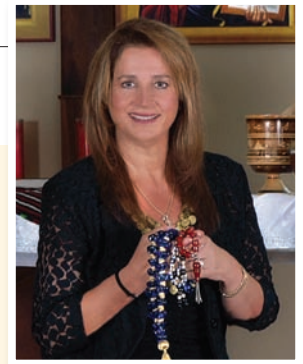


First presented in 1991, this award honors Ohio Alpha CAROLYN HELMAN LICHTENBERG who served the Fraternity as grand president from 1985 to 1991. Recipients are distinguished alumnae who exhibit excellence and outstanding leadership in their career or volunteer service to their communities.

## **MARI LOU PSIHOGIOS DIAMOND**

Lake Oswego, Oregon  
Oregon Alpha, University of Oregon

Recognized as a talented interior architect for 29 years, MARI LOU PSIHOGIOS DIAMOND is the head of her own firm, Diamond Designs. She has worked extensively for many organizations including the Junior League of Portland, Lake Oswego Women's Club and the Greek Community of Oregon. One of her most recent accomplishments is founding the Hellenic-America Cultural Center and Museum (HACC) of Oregon and Southwest Washington. Mari Lou designed and oversaw the construction of the museum and served as its founding president. Within four years, she created one of the top Hellenic cultural centers in the United States. Mari Lou also has served Pi Beta Phi as an international officer for more than 10 years. For the past six years, she has served Oregon Alpha's Chapter House Corporation, where she uses her designing talents and manual labor to transform the chapter house.



## **KRISTI PETERSON LUMPKINS**

Houston, Texas  
Tennessee Beta, Vanderbilt University

KRISTI PETERSON LUMPKINS and her husband founded Yellowstone Academy, an inner-city private, Christian school in Houston. Yellowstone targets at-risk children in the area, and almost all students are from single-parent homes. In 2002, when the school was founded, there were 64 third- and fourth-graders. Now, there are 252 students in pre-K to fifth grade, and the school is adding one grade per year until it reaches its capacity at eighth grade. Kristi has been involved with the school since its inception. She and her husband researched the concept, hired an executive director, formed a nonprofit organization, recruited a board of directors and raised the money necessary to proceed. Kristi recruited potential volunteers and encouraged them to join the team in advancing the school. She also has served in various volunteer capacities for the school, including library coordinator and field trip facilitator.



**HEATHER HENRICKS LENKIN**

Pasadena, California  
Arizona Alpha, University of Arizona

For more than 20 years, HEATHER HENRICKS LENKIN has received local and national awards for her landscaping designs and has conceptualized gardens throughout the Los Angeles area. She has been included in a number of gardening books and magazines, including *Woman's Day Gardening & Deck Design*. Heather's professional experience includes serving as president of Lenkin Design Inc.; senior vice president and director of marketing for Public Storage Management Inc.; and president and chief executive officer of The H.T. Thompson Corporation. Heather has been featured in television specials, books, newspapers and Web sites for her gardening design successes. In 2008, she was asked to relocate a garden belonging to a family in Mississippi who fell victim to Hurricane Katrina. While in the family's hometown, she volunteered at the community library, which was in a temporary trailer. Because of her dedication to literacy, which she shares with Pi Beta Phi, she organized efforts to replenish and organize the books.

**ANN RHOADES**

Albuquerque, New Mexico  
New Mexico Alpha, University of New Mexico

ANN RHOADES is a human resources executive with more than 25 years experience in a variety of service-based industries. She has been the vice president of people development for Southwest Airlines and most recently, the executive vice president of people for JetBlue Airways, where she currently remains a board member. She is also the president of People Ink, her own human resources consulting company. During her time at Southwest Airlines, Ann solidified the company's reputation of hiring and retaining the best people in the airline industry. Ann is now a popular speaker on the subject of customer service and how to build a strong service culture. She was the winner of the 2006 Annual Governor's Award for Outstanding New Mexico Women, and was named to New Mexico Business Weekly's Power Book in 2007 and 2008 as a power broker.





---

**MARY RAKOW TANNER**

Alexandria, Virginia  
Maryland Beta, University of Maryland

MARY RAKOW TANNER began her career as the associate director for administration at the National Museum of Natural History. From there, she went to work with the National Performance Review in the office of the vice president of the United States. She served as a team leader for one of five teams, coordinating efforts for the Departments of Labor and Education and the Social Security Administration. A 35-year veteran of the Smithsonian Institution, Mary currently serves as deputy director of the Smithsonian's National Zoological Park. Since 2002, she has supervised the daily operations of the zoo, including exhibit maintenance and communications. She also serves as liaison to the police stationed at the zoo and collaborates with Friends of the National Zoo to coordinate activities. From 1995 to 2002, Mary was the executive officer to the provost, where she served as the principal administrative adviser to the provost of the Smithsonian Institution. Mary serves as president of the D.C. Alpha Chapter House Corporation and is a member of the Northern Virginia Alumnae Club.

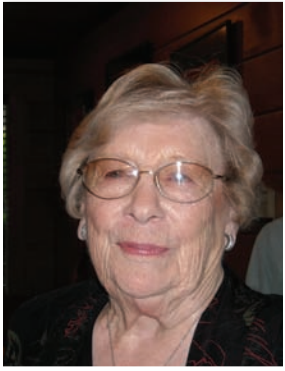
---

**JULIE JACOBSON GATES**

Dallas, Texas  
Washington Gamma, University of Puget Sound



JULIE JACOBSON GATES co-hosts the "Gene & Julie Show" with her husband, Gene. The show is on CBS's affiliate, KVIL, in Dallas and is streamed to an international audience on AOL Radio. The successful show is recognized by the radio industry as one of the best in the country. "Gene & Julie" has won the Best Morning Show trophy at the Achievement in Radio Awards. "Gene & Julie" also has been nominated for a Marconi Award (the Oscar of the radio industry) from the National Association of Broadcasters. Julie has earned two Wishmaker Awards from the Make-A-Wish Foundation® of North Texas for granting the wishes of terminally and chronically ill children. Julie began her involvement in Pi Phi as a leadership development consultant, and she and her husband will emcee Pi Phi's 67<sup>th</sup> Biennial Convention in June.



**JANET SPEELMAN NORTH**

Auburn, California

South Dakota Alpha, University of South Dakota

JANET SPEELMAN NORTH has dedicated her time and efforts to Pi Beta Phi and other community organizations. When she moved to Auburn, California, she noticed the town had a pool of musical talent, but the Auburn Symphony needed direction. She began to volunteer with the symphony and soon was elected to the board and later became president. To encourage donations for the symphony, she began to host functions at her home, and she sponsored concerts and recitals on a stage in her living room. She encouraged the board to hire a permanent music conductor and created annual scholarships to youth in the community to finance talent development. Active in the San Francisco Alumnae Club, Janet invited the club to her home this May. She incorporated the Auburn Symphony's annual concert into the visit because she wants to share "the finest community orchestra in the country" with her alumnae club.

**DAPHNE OSENA PAEZ**

Paranaque City, Philippines

Ontario Alpha, University of Toronto

DAPHNE OSENA PAEZ had a broadcasting career at ABS-CBN in news and current affairs, where she began in 1997 as a news reporter covering the presidential election. From 1999–2006, Daphne was the host and editorial consultant of "F," the longest running and most awarded lifestyle magazine program on Filipino TV. Daphne was also the former editor of *Metro Weddings* magazine, the Philippines' top bridal magazine published by ABS-CBN Publishing. Currently, she is the host and producer of "Urban Zone," a 30-minute weekly magazine program on ABS-CBN and The Filipino Channel. The show is the product of her desire to merge her television career with her training in urban planning. "Urban Zone" focuses on architectural design and stylish living tips. Daphne is now one of three leaders of the British Council's Creative Cities program, representing the Philippines in global exchange and conferences. She is also the spokeswoman for the Study in Canada program by the Canadian Embassy in Manila, Philippines.







## Pi Phis Give Back to Their Communities

^ Kansas Alphas at the University of Kansas held a book organizing event in December 2008. The women sorted and inserted Pi Phi-made “bootmarks,” or bookmarks in the shape of cowboy boots. Members drove to Kansas City and distributed the books to children in a psychiatric hospital.

> Members from the California Delta Chapter at the University of California, Los Angeles visited and read to students at Larchmont Elementary School in West Hollywood, California. SUSAN WANG was one of many chapter members who volunteered.





◀ The California Beta Chapter at the University of Berkeley, the Contra Costa, California, Alumnae Club and San Francisco Alumnae Club competed in a First Book Speed Read™ in January. Chapter members invited the alumnae clubs to their house for a soup luncheon, Cookie Shine and Speed Read.

▼ Texas Etas at Texas A&M University participated in the Champions are Readers® (CAR) program. The Cat in the Hat® visited the participating classroom and read aloud to the students. Members conducted a Speed Read for “Wacky Wednesday” and engaged the students in the Speed Read as they celebrated literacy together. Vice President of Philanthropy LAUREN WILLIAMS dressed up as the Cat in the Hat, and Vice President of Event Planning MARY FAULK participated in the program.



▲ California Theta BRIDGET BOTELHO, vice president of event planning, and her fellow Pi Phis at the University of California, Davis spent four days a week assisting at a local elementary school. The women read with the children in the school’s after-school reading room.



**Members of Georgia Alpha at the University of Georgia are committed** to visiting a local elementary school, Alps Road Elementary, at least two times during each semester. The women help students with their homework, which includes anything from reading to working math problems.

**Every spring the Idaho Alpha Chapter from the University of Idaho hosts a Teddy Bear Clinic at Gritman Medical Center, a local hospital.** To make the children more comfortable, Pi Phis give the children ID bracelets for their teddy bears. The children also take a tour of the hospital, where they meet chapter members in various rooms. The children get to wear surgery hats, face masks and gloves, and they even get an X-ray for their teddy bears when they visit the radiology department.



**^ In October 2008, Florida Betas from Florida State University** raised \$1,900 for The Leukemia and Lymphoma Society®. The students participated in the Light the Night Walk, which began on Florida State's campus in 2007.



**^ The Texas Delta Chapter held its annual "Dodge the Arrow" dodgeball tournament** at Texas Christian University in November 2008. The chapter incorporated a Speed Read into its event this year and gathered books to distribute to local elementary schools. In total, the chapter raised more than \$1,400 for First Book® from the events. From left, KRISTEN DOMBROSKI, BROOKE PEOPLES, ELEANOR NASH, TRISTAN ATWOOD, CHRISTINE CABORI, JULIE MEYER, ANDREA DOMINGUEZ and KRISTEN DEPTULA.

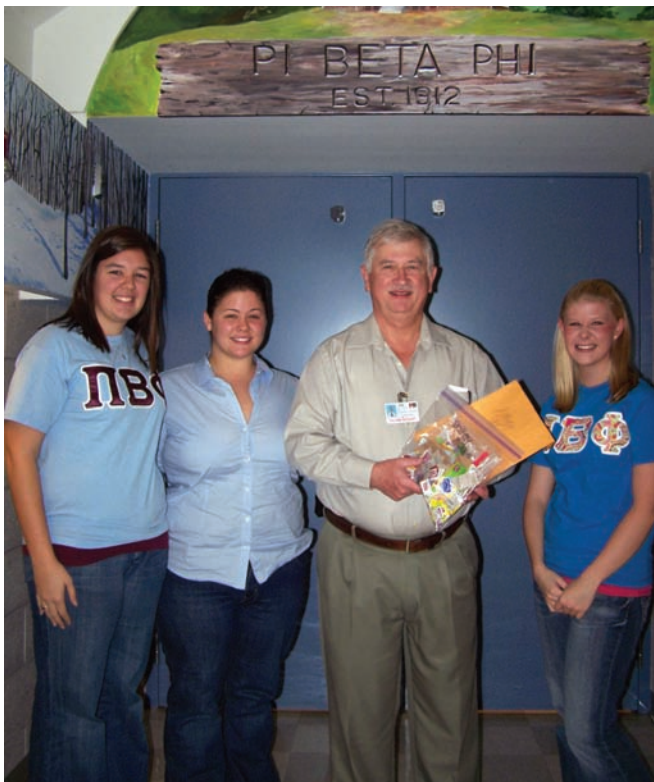


▲ **Members from the Oregon Gamma Chapter** at Willamette University participated in the CAR program with a local elementary school. Members celebrated the completion of the program with the students by distributing medals to the students.

◀ **New York Deltas at Cornell University** took part in “Into the Streets” this winter.

The event is one of the largest days of community service in Ithaca, New York, when people come together to clean the community. The sophomore class went to the local Salvation Army, where they helped clean a house.

◀ **Tennessee Gammas from the University of Tennessee** collected “Box Tops for Education” and donated the box tops to Pi Beta Phi Elementary School in Gatlinburg, Tennessee. From left, KENDRA SUMMERS, MONICA BIRD, Pi Beta Phi Principal Glenn Bogart and ASHLEY ISHLER.



➤ Louisiana Betas RACHEL PARKER and LESLEY BERGERON participated in the CAR program with their chapter at Louisiana State University. The chapter not only completed the program at University Terrace Elementary but members also visited twice a week to help kindergarteners learn to read and to write.

The women of Illinois Eta at Millikin University celebrated their weeklong book drive with children in the Decatur, Illinois, community. The chapter raised \$600 for First Book and \$100 for the Decatur community by selling “I heart a Pi Phi” shirts to friends and family. They presented the check to First Book at the culminating ceremony, which included a puppet show, crafts, musical entertainment and a Speed Read.

➤ Massachusetts Gammas TERESA GIBLIN, JENNIFER ALLEN, CHRISTINA MARGIOTTA, ASHLEY BROWN, LILY LIU and MELISSA CROWELL participated in the chapter’s three-day bake sale benefiting First Book and the Pi Beta Phi Foundation. The chapter at the Massachusetts Institute of Technology raised more than \$600 at the bake sale, a successful first philanthropic event.

➤ The Michigan Epsilon Chapter at Western Michigan University organized and hosted “Hoops for Halos,” an annual philanthropic event. The basketball tournament is just one of the chapter’s philanthropic endeavors. Members are also involved in Habitat for Humanity® and “Polar Plunge,” a fundraiser for Special Olympics.





◀ The New York Epsilon Chapter at Rensselaer Polytechnic Institute showed potential new members their philanthropic efforts during recruitment this year. The chapter decorated cookies with the potential new members and later delivered them to local firefighters and police officers to show their appreciation and support. They also decorated literacy bags to be donated to Troy Elementary School. From left, CHELSEA TOBIN, AMANDA GILL, JESSICA FEIDEN, ELIZABETH HUNTER and EMILY SIEGFRIEDT.



◀ California Nus at Loyola Marymount University coordinated many philanthropic efforts this past fall including writing letters to troops in Iraq and the CAR program. JODI RANDOLPH participated in the CAR program at Kentwood School.



◀ Tennessee Deltas LEA HAY, ANANYA DATTA, ALISE KIRALY, LINDSAY BELL, LESLIE GRABEMAN and MEGAN WARDEN volunteered with Variety – The Children’s Charity® and the Down Syndrome Association and painted children’s faces at the “Madagascar 2: Escape to Africa” movie premiere.



For more Collegiate News,  
visit [www.pibetaphi.org](http://www.pibetaphi.org).

# Housing



**COLONIAL GEM**

#### Statistics:

- 19,836 square feet
- Houses 70 women
- Appraised value: \$3,233,600
- Fire sprinkler system throughout

#### MISSOURI ALPHA

University of Missouri  
Columbia, Missouri

Missouri Alpha was founded at the University of Missouri on May 27, 1899. The chapter's first home was purchased in 1915 for \$12,000 at 500 Rollins Street after alumnae each pledged \$5 to the chapter house fund.

In 1928, chapter members realized they were outgrowing their house and purchased two lots on Rollins Street. On October 17, 1930, the current chapter house at 511 East Rollins Street was dedicated, and 40 Missouri Alphas moved in. Over the last 79 years, the chapter house has continued to grow with the needs of the chapter including an addition in the 1960s.

The Chapter House Corporation is currently in the beginning stages of new renovations including a complete bathroom remodel. Missouri Alpha alumnae should look for exciting updates and news in the upcoming months!

#### MICHIGAN GAMMA

Michigan State University  
East Lansing, Michigan

Michigan Gamma was founded at Michigan State University on April 28, 1944. The chapter's first home was Delta Chi Fraternity's former house where the chapter lived for 10 years. In 1955, Michigan Gamma moved to its new home at 343 North Harrison Road where members currently reside today.

The Chapter House Corporation recently embarked on a new alumnae relations program to help keep the chapter and its alumnae connected. Michigan Gamma alumnae can expect their first issue of the Harrison Herald this spring!



**NEW PATIO**

#### Statistics:

- 10,332 square feet
- Houses 30 women
- Appraised value: \$1,482,500
- Fire sprinkler system throughout



Learn more about collegiate housing  
by visiting the Fraternity Housing  
Corporation Web site,  
[www.pibetaphihfc.org](http://www.pibetaphihfc.org).

# TRAILBLAZE WITH US IN TEXAS

Join us in Texas for a week of sisterhood, leadership and excitement June 26–30, 2009, at the Gaylord Texan Resort & Convention Center. Pack your cowboy hat and get ready to experience the energy of Pi Beta Phi's 67<sup>th</sup> Biennial Convention.

Attendees will take part in countless exciting and fun activities including the T.A.K.E Foundation™ self-defense class, an Alumnae Values Institute for Alumnae Advisory Committee members, training for Chapter House Corporation members, the Leadership Fair, First Book Speed Reads™ and much more!

## A Place to Rest your Head

The Gaylord Texan Resort is one of the top-rated hotels in the Dallas-Fort Worth area. Only six minutes away from the Dallas-Fort Worth International Airport, the Gaylord is also convenient to downtown Dallas or Fort Worth — both are only 20 minutes away. The hotel's indoor gardens surround many diverse restaurants and lounges — one for each style of dining. There is a wine cellar steakhouse, a sports bar, a quaint café, a coffee bar and an ice cream shop. Convention attendees can enjoy the outdoor splash pool or indoor lap pool, workout in the fitness center or stop by the day spa for a massage.

## Registration

Online registration is now open! Please register online at [www.pibetaphi.org/convention](http://www.pibetaphi.org/convention). If you are unable to register online, you may request a registration packet from Special Events Coordinator Julie Ravensberg at [julier@pibetaphi.org](mailto:julier@pibetaphi.org) or (636) 256-0680.







### Full-Time Visitor Package

Join us for a week of fun and sisterhood! The following rates apply if you plan on joining us in Texas Friday through Tuesday, June 26–30, 2009. Package pricing includes full-time convention registration fee of \$150, four room nights, four dinners (beginning Friday) and three lunches (beginning Saturday).

- ★ Full-time regular rate: \$1,100 (register through May 1)
- ★ Full-time regular rate with private room: \$1,425
- ★ Full-time late rate: \$1,200 (after May 2)
- ★ Full-time late rate with private room: \$1,525

### Weekend Visitor Package

The following rates apply for those attending Friday through Sunday, June 26–28, 2009. Package pricing includes part-time convention registration fee of \$115, two room nights, two dinners (beginning Friday) and two lunches (beginning Saturday).

- ★ Part-time regular rate: \$625 (register through May 1)
- ★ Part-time regular rate with private room: \$800
- ★ Part-time late rate: \$725 (after May 2)
- ★ Part-time late rate with private room: \$900

### Daily Registration

The daily registration fee to attend general sessions and/or workshops is \$60 per day.



For more information  
about convention visit  
[www.pibetaphi.org/convention](http://www.pibetaphi.org/convention).

### Individual Meals

Visitors who do not need overnight hotel accommodation at the Gaylord Texan may register for individual meals online. Please make your meal reservations early, as space is limited and reservations will close Monday, June 1.

### Getting to Convention

Pi Phi will have special fares to the 2009 Convention site in Texas. To obtain these special rates, please contact Cheryl, Debbie or Pat at Jade Travel (800) 627-9258. Please call Monday through Friday between 8 a.m. and 5 p.m. Central Daylight Time.

## TOUR TEXAS WITH US!

Arrive a day early and join us on Friday, June 26, as we visit Neiman Marcus flagship store and The Nasher Sculpture Center. Extend your Texas adventure and join us for the post-convention tour on Tuesday, June 30, where you'll explore the architecture of Fort Worth, Texas, on the Gold Medal Tour and go on a guided tour of the Kimbell Art Museum, the Modern Art Museum of Fort Worth, the Amon Carter Museum and the Marty Leonard Community Chapel. Please contact Kentucky Beta CYNTHIA ARNOLD BOWEN at (214) 363-2668 or [cynthiabowen@hotmail.com](mailto:cynthiabowen@hotmail.com) for additional information. Early registration is encouraged for both tours.

## 2009 Convention

### Deep in the Heart of Friendship

The Texas state motto is “friendship,” and Pi Beta Phi Foundation is ready to celebrate it with a host of events at the 67<sup>th</sup> Biennial Convention. Join the Foundation in the spirit of Pi Phi friendship at our many fun activities. From an inspiring speaker to a celebratory dinner, our calendar of events is rooted “Deep in the Heart of Friendship!”



  
CALENDAR OF EVENTS  


#### FRIDAY, JUNE 26, 2009

Visit the Foundation booth and lasso up a special tribute for your Pi Phi sisters! “Deep in the Heart of Friendship” tribute hearts will be available for \$5 each or six for \$25. Each heart will feature the honoree and donor’s name. All proceeds support the Foundation’s Friendship Fund.

#### SUNDAY, JUNE 28, 2009

Join the Foundation at Sunday evening’s dinner, where we will recognize and award top alumnae clubs and collegiate chapters for their impressive fundraising efforts in support of Pi Beta Phi Foundation. The festivities will continue after dinner with special Pi Phi parties celebrating the Foundation’s successes — past, present and future!

#### MONDAY, JUNE 29, 2009

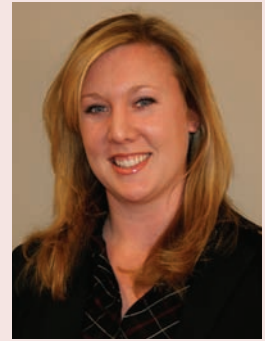
The Foundation is honored to sponsor the T.A.K.E. Foundation™ self-defense training on Monday, June 29. The T.A.K.E. Foundation was formed in memory of Kansas Beta ALI KEMP, who died tragically at age 19. T.A.K.E. is dedicated to empowering women through reality-based, hands-on training.

Look for the Foundation at the Leadership Fair! Learn how your support positively impacts the lives of Pi Phis through the Foundation’s efforts in leadership, education and philanthropy.

## Foundation Announces New Development Officer

Pi Beta Phi Foundation is pleased to announce Florida Epsilon ALLISON GOULD as development officer. Allison has a long affiliation with Pi Beta Phi. As a member of the Florida Epsilon Chapter at the University of Central Florida (UCF), Allison held the positions of both recruitment chairman and Panhellenic delegate. Allison graduated from UCF in 2001 with a Bachelor of Arts in legal studies. After graduating, she was a three-year member of the Florida Epsilon Alumnae Advisory Committee and even served as chairman.

Allison's professional background includes her most recent position with United Medical Corporation in Windermere, Florida, where she oversaw all aspects of marketing, communications and special events for this \$450 million privately-held health care company. Allison has also been a community volunteer with the Cystic Fibrosis Foundation<sup>sm</sup> and The Buoniconti Fund where she assisted in fundraising efforts and special events. She was a 2006 Single Greatest Night honoree, selected by the Cystic Fibrosis Foundation to be part of its annual class of noteworthy young professionals in central Florida. She is a welcome addition to the Foundation staff.



ALLISON GOULD  
Florida Epsilon  
Development Officer

# PI BETA PHI FOUNDATION CONVENTION GIVING

Celebrate Pi Phi friendships by ordering your tribute hearts today!

**Tributes are \$5 each  
or purchase six for \$25.**

Please use additional paper as necessary.  
(If the donor is a club or chapter,  
please provide president information.)

PI BETA PHI  
Foundation

In Recognition/Memory of

Given by

Donor Name (first, maiden, last): \_\_\_\_\_  
 Donor Address: \_\_\_\_\_  
 City: \_\_\_\_\_ State: \_\_\_\_\_ ZIP: \_\_\_\_\_  
 Phone Number: \_\_\_\_\_ Honoree Name: \_\_\_\_\_  
 Donor Chapter: \_\_\_\_\_ Honoree Chapter: \_\_\_\_\_  
 Type of Gift:  Recognition  Memorial - Date of Death: \_\_\_\_\_  
 Payment Information: Total Amount: \$ \_\_\_\_\_  
 Check Enclosed (make payable to Pi Beta Phi Foundation)  Charge  
 Credit Card Type:  Visa  MasterCard  American Express  Discover  
 Name on Card: \_\_\_\_\_  
 Account Number: \_\_\_\_\_ Expiration Date: \_\_\_\_\_  
 Security Code: \_\_\_\_\_ Signature: \_\_\_\_\_

Mail completed form to:  
Pi Beta Phi Foundation  
1154 Town & Country Commons Drive, Town & Country, Missouri 63017

# Remember

## One Hundred Years of Convention Memories

As the 67<sup>th</sup> Biennial Convention draws closer, let's look back at our 21<sup>st</sup> Biennial Convention, held almost 100 years ago.

Pi Beta Phi members from 40 chapters gathered in Swarthmore, Pennsylvania, June 27 to July 1, 1910. Grand President MAY LANSFIELD KELLER, Maryland Alpha, presided over the convention body.



Attendees at the 1910 Convention gathered for a group photo in front of the college library.

The Convention Committee greeted attendees in Swarthmore when the trains arrived. Attendees who wanted to ride in a coach to the inn, a 20-minute walk, could do so for 10 cents. Each trunk was charged 25 cents if the women rode to the inn. The Convention Committee asked members attending convention to wear a small knot of Fraternity colors so they would be easily recognized at the train station.

The women were headquartered at the Swarth Haven Inn. The inn was nearly filled with regular guests so only Grand Council and a few others were accommodated there. However, convention meals were still served to all in the dining room. Most attendees were housed in various cottages at the Swarthmore Preparatory School about a quarter mile from the inn. Members paid \$3 a day for a double occupancy room. All business meetings were held at the Swarthmore Presbyterian Church, which was situated halfway between the school and the inn.

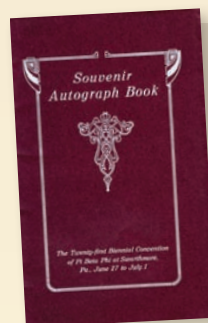
The Swarthmore Convention was deemed, at that time, as the most successful Pi Beta Phi Convention ever because the vote to start the Settlement School was taken.

The business success was attributed to the quality and serious purpose of the collegiate delegates and the influence and enthusiasm of the alumnae.

Massachusetts Alpha SARAH G. POMEROY (RUGG) wrote in the July 1910 *Arrow* that never in the history of the Fraternity had the alumnae been represented as largely as at Swarthmore. Many of the collegians' favorite part of convention was meeting the alumnae on Tuesday afternoon.

Each evening, a local chapter offered entertainment for the convention attendees. On Monday evening, Pennsylvania Alphas delighted attendees with songs, recitations, college skits and a Pi Phi medley. The women of Pennsylvania Gamma hosted an informal supper in the Swarthmore woods until, as New York Beta SOPHIE PARSONS WOODMAN eloquently wrote, "the mosquitoes drove us home." A Cookie Shine on Wednesday evening, hosted by Pennsylvania Beta, was of course well-received by Pi Phis but left the locals wondering. The Swarthmore Newspaper asked its readers, "Do you know what a Cookie Shine is? Neither do we, exactly, but that is what the Bucknell Chapter contributed to the entertainment of the visitors Wednesday evening."

The closing banquet on Thursday night was thought by many to be the grandest part of convention. However, according to both Sarah and Sophie's accounts, the unanimous vote to admit three new chapters into the Fraternity and the celebration as the women from Oklahoma, Ohio and Wyoming were received with cheers and songs by the convention body was by far the grandest. Sophie wrote, "a good many of us felt and learned more of Pi Beta Phi in those few minutes than we ever knew before."

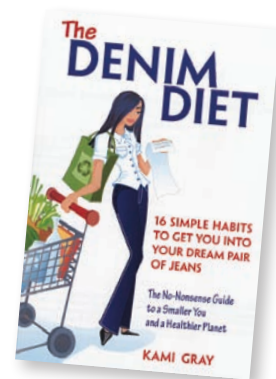


Convention delegates were each given an autograph book during the final banquet on Thursday evening. The book contained photos of Grand Council, a roster of chapter delegates, the convention program and pages allowing attendees to capture the name, chapter and mailing address of other delegates.



## Pi Phi Pens

Arizona Beta KAMI GRAY grew up in solar homes and ate entirely from her family's organic gardens before attending Arizona State University. She has surrounded herself with people who live environmentally conscious and who value their health as well as the planet's health. Now, a TV and film wardrobe stylist, Kami has written the book "The Denim Diet: Sixteen Simple Habits to get you into your Dream Pair of Jeans." A funny, quick and lighthearted read, the book is full of real stories, gourmet recipes and tips for dressing slimmer.



West Virginia Alpha NEYAL AMMARY-RISCH from West Virginia University wrote "In Mommy's Garden: A Book to Help Explain Cancer to Young Children." The book is geared toward children ages three to seven who have a family member with cancer. It can also be used with older children, adults and people with low literacy levels. In 2004, the book won an award from the American Public Health Association for the best public health education and health promotion print material. In 2006, a special edition was created with CancerCare, a nonprofit in New York City, and distributed to more than 10,000 families facing cancer and the health professionals working with them.



SANDRA DALLAS, a Colorado Beta from the University of Denver, has been dubbed "a quintessential American voice" by Jane Smiley in *Vogue* magazine. Her newest book, "Prayers for Sale," follows the lives of two women and the secrets they keep in order to survive in a small Colorado mining town. Sandra began writing the book as a collection of short stories influenced by Summit County, Colorado, but wrote a novel instead. Sandra has written many other novels, including "Tallgrass," and nonfiction pieces such as "Colorado Ghost Towns and Mining Camps."



For more information  
about these and other Pi Phi Pens,  
visit [www.pibetaphi.org](http://www.pibetaphi.org).



### Pi Phi Alumnae Making News

**1** < Young alumnae from the Nation's Capital Alumnae Club and D.C. Alpha seniors gathered in November for a flag football game. They played on the National Mall where several friends and family came to show their support.

**2** < In October 2008, Michigan Gamma JEAN HESS CLARK was honored for needlepointing a kneeler for the high altar at the Washington National Cathedral in Washington, D.C. She was one of 10 women chosen from hundreds of applicants. From left, Colorado Alpha JEAN CLARK AUCHTERLONIE, Jean and Michigan Beta ISABELLE WILLIAMS CLARK.



**3** < Iowa Gamma MARY CORD MASON climbed to the summit of Mount Kilimanjaro in October 2007, celebrating her 64<sup>th</sup> birthday. The sign was made by a Hot Springs, Arkansas, alumna for Mary to carry while she was on a wilderness medicine expedition.



**4** < Texas Zeta ANNA URBANTKE completed the 2008 Ford Ironman Arizona in 16 hours and 27 minutes. Over the last four years, Anna has finished 13 triathlons and raised more than \$10,000 for The Leukemia and Lymphoma Society®. Her pledge sisters joined her in celebrating. Back left, MARISSA MATHEWS, LAINE SCOTT, Anna, ASHLEY EDISON REED, ASHLEY ROUNER and CHRISTY MARTIN BICKLEY. Front left, MELISSA WESTER and KAREE GOREE HUGGINS.



**5** ▲ The McKinney Area, Texas, Alumnae Club gathered in October and is pictured with its Excellence in Programming Award. This award recognizes outstanding programming covering all facets of club activity relevant to today's women and meeting the needs of the members, the local organization and the Fraternity.

**6** > Illinois Zeta KELLY SNELL KELLER (right) met First Lady Michelle Obama last October at the Town Hall Presidential Debate on Belmont University's campus in Nashville. Kelly was one of the 100 undecided voters selected by the Gallup Organization to attend the event.





**7** < The Lake Oswego-Dunthorpe, Oregon, Alumnae Club recently hosted the Start Making A Reader Today (SMART) booth at the Portland, Oregon, Marathon Sports Fitness Expo. In addition to informing Expo patrons about SMART and getting involved, the women met several Title 1 school teachers and gave them information about First Book®. From left, Oregon Alphas MAJA TANAKA BERGE, DEBBI AMATO MONAHAN and MISSY GERBER.



**8** < The Louisiana Northshore Alumnae Club participated in the Champions are Readers® (CAR) program with Folsom Elementary School. Illinois Alpha BARBARA HENRY (far left) and Texas Alpha CINDY SATTERLEE HARLAN (center) volunteered and worked with Olice Weary (right), a third-grade teacher at the elementary school, and the elementary school's students.



**9** < The women of the Kansas City, Missouri–Shawnee Mission, Kansas, Alumnae Club, the Junior League of Kansas City and the Kansas City Star organized a book drive called “Hooked on Books” in November 2008. The women are pictured in the warehouse, where all the donated books were temporarily stored until the alumnae club sorted by grade level.



For more Alumnae News,  
visit [www.pibetaphi.org](http://www.pibetaphi.org).



**10** > The Chesapeake, Maryland, Alumnae Club spent its annual Christmas luncheon collecting books, games and gift cards for the local YMCA. The gifts were donated to women and children of spousal abuse who live at the Arden House facility in Ann Arundel County, Maryland.



**11** > “Team Peggy” participated in the Walk to Defeat ALS™ this year. Washington Gamma PEGGY PRITCHARD OLSON (center), an Edmonds, Washington, council member, was diagnosed in early 2008 with ALS disease, or Lou Gehrig’s disease. Washington Gammas VIRGINIA CLAUSEN DAILY, BETH PRITCHARD PERROW, NANCY ZITTEL MILLER, SUSAN MARINO SIMPSON, LINDA O’KEEFE HERING and JAN TRYON BERG came to support Peggy.



**12** > North Dakota Alpha REBECCA PRICE (right) was honored by the Wisconsin Park and Recreation Association (WPRA) as the young professional of the year. Rebecca works as the recreation and aquatics supervisor and chairs the aquatics section of the WPRA. Iowa Zeta MARILYN STEELE PENN (left), chair of the Sun Prairie Park, Recreation and Forestry Commission, presented the award to Rebecca.



# Caton Metzler Bredar

Award-Winning Journalist and Pi Phi International Officer

*in her words*

**Illinois Beta-Delta CATON METZLER BREDAR grew up near Arlington Park, Illinois, and held a variety of licenses on the racetrack including exercise rider, owner, trainer and racing official before turning her attention to broadcasting.**

After graduating from Knox College with a Bachelor of Arts in English writing, Caton began her television and radio career in Chicago before settling in Louisville, Kentucky, where she currently works part time as an anchor and reporter for the NBC affiliate, WAVE 3. There, Caton researched, wrote and co-produced the Eclipse Award-winning documentary, "A Legend Re-Affirmed — the 30th Anniversary of the Last Triple Crown."

Caton has contributed to thoroughbred and harness racing events and countless regional and local shows. She has also covered professional figure skating for ESPN and FOX. She can be heard regularly on SIRIUS Satellite Radio's weekly "Down the Stretch."

When she's not working or watching the races, Caton volunteers her time as a Court Appointed Special Advocate (CASA) for Jefferson County. She has been on the board of directors for Kids to the Cup, an organization offering scholarships and bringing young race fans to major events. She also serves Pi Beta Phi as the collegiate regional programming specialist for Region Three.



**Q: The best advice I ever received was ...**

**A:** take all criticisms and advice seriously, but never personally.

**Q: Even my best friends don't know I ...**

**A:** am overly sentimental and cry at the drop of a hat — for happy as well as sad things.

**Q: My favorite vacation spot is ...**

**A:** anywhere with an ocean. Barbados is a good one!

**Q: I wish I had more time to ...**

**A:** read — novels, magazines, the newspaper, anything!

**Q: A life worth living must ...**

**A:** be filled with laughter, tears, good food and good friends!

**Q: I am most proud of ...**

**A:** being a part of so many vastly different organizations.

**Q: The virtue I value most is ...**

**A:** courage.

**Q: My biggest challenge in life has been ...**

**A:** coping with the deaths of my parents at relatively early ages; learning to create a new, different but happy life without them to help me and to share in it.

**Q: The heroine I most admire is ...**

**A:** Babe Didrikson Zaharias.

**Q: My fondest Pi Phi memory is ...**

**A:** so many! As a collegian, getting ready for initiation with my longtime friend, Anna, in the midst of a terrible Midwest blizzard! As an alumna, the road trip to St. Louis with my Kentucky Pi Phi friends stands out.

Pi Phi taught me ...

*"the importance of teamwork and accepting that you can't do everything, but you can always do the best that you can."*

# Reunions & Anniversaries

**1 >** In July 2008, the North Dakota Alpha Chapter at the University of North Dakota returned to 409 Cambridge for the first North Dakota Alpha Summer Reunion. A formal meeting was held, in which seven decades of Pi Phis from all over the United States, Canada and Europe gathered to develop ways to support the active chapter and house. The women also began plans to create a local alumnae club to serve the Grand Forks and Fargo, North Dakota, areas.



**2 >** The Florida Beta class of 1962 from Florida State University held its 16<sup>th</sup> reunion in Nashville, Tennessee. It was the 50<sup>th</sup> anniversary of their pledge class, and 10 women came and enjoyed three days of sightseeing in Nashville. They enjoyed learning about Tennessee's history, hiking, cooking and catching up on their lives. The women keep in touch through a monthly conference call, e-mails and reunions every 18 months.



**3 >** Texas Zetas from Baylor University celebrated their 50<sup>th</sup> birthdays together. From left, LAURA HINDS JONES, JILL RUBOTTOM RICHMOND, LISA HUNDLEY STRONG, JANET HUDDLESTON CALVERT and NANCY SVEEN JACKSON.



**4 >** Ontario Alpha celebrated its 100<sup>th</sup> anniversary this fall. Members from the University of Toronto gathered on campus to celebrate the centennial celebration in December. The celebration included a dinner and a slide show, which included pictures from women in attendance who were collegiate members in the 1940s to present.



**5 >** The Oregon Alpha classes of 1953 and 1954 from the University of Oregon held reunions in September 2008 in Gearhart, Oregon. The women stay in touch and affectionately called themselves “the girls with the grandma faces.”



# Ask the Webmaster



## A Design Favorite!

Although Director of Information Technology Tim Steele created most of the design templates chapters and alumnae organizations are choosing for their Web sites, a Syracuse University undergrad created PiPhiNET's most popular template. New York Alpha DANIELLE JACKSON designed the appropriately named New York Alpha template, which is being used by more than 50 percent of chapters and clubs.

Danielle's design has been getting raves all over the NET for its classy, symmetrical look. Congratulations and thanks Danielle, for allowing us to use your wonderful work.



## Tip of the Issue:

Visit the new leadership development consultant (LDC) Web site, [www.pibetaphi.org/ldc](http://www.pibetaphi.org/ldc). The site was designed for current LDCs, potential LDCs and any members interested in the activities of our consultants. Features include photo blogs, text blogs, consultant profiles, an application form and information on how to host an LDC.

## From the Webmaster's Mailbox

*The old Web site used to have information about the National Panhellenic Conference (NPC). Where can I find that information?*

The new NPC section is located under the About Us, Collegiate Chapters and Alumnae tabs on the main menu. The new edition of the NPC section includes news and contact information. Check often for NPC updates.

*I notice the Legacy form can be completed online. Why is the Recruitment Information Form (RIF) not available online?*

A RIF may be downloaded, filled out and mailed to the chapter. This helps us to ensure complete security of this confidential information. Thanks to our alumnae for taking the time to fill out RIFs!



For more Web site navigation tips click on the Help link at [www.pibetaphi.org](http://www.pibetaphi.org).

*Why is the Fraternity going to the expense of creating its own social networking?*

There are many over-the-counter or browser-based social networking products out there. However, there are many disadvantages to using these systems. These include an annual expense, the transparency of online data, limited design choice and the requirement of having to display their company logo, advertisements and marketing information on each site. By building our own network, we can provide the same functionality (and more) and tailor the content toward endeavors more in line with Pi Beta Phi's values and structure. Built *by* Pi Phis, *for* Pi Phis, we can display our own local and national information without being forced to publish content from outside interests. This keeps ownership of all data within the organization and away from competitors and SPAMmers. We can also make changes, add features and functionality based upon the suggestions of YOU, our members!

# The A List

THE ESSENTIALS FOR ANGELS

*Kick up Your Cookout!*

## This Little Pig

A favorite cookout food finds the perfect holder.

[www.uncommongoods.com](http://www.uncommongoods.com)



## Tea Time

Tea isn't just for two with this picnic partner.

[www.bedbathandbeyond.com](http://www.bedbathandbeyond.com)



## Green with Envy

Grill on the go! Perfect for tailgating or a picnic in the park.

[www.crateandbarrel.com](http://www.crateandbarrel.com)

## Table for Four

Everyone is sure to love this cute and clever mini condiment set.

[www.baronbob.com](http://www.baronbob.com)

## Hey, Grillfriend!

"Dressed to Grill" promises savvy recipes for girls who play with fire!

[www.dianemorgancooks.com](http://www.dianemorgancooks.com)

# In Memoriam

Because of space constraints, *The Arrow* will only print the entirety of an obituary for a former grand president. If you know a sister who has died, please inform Headquarters. Only those names accompanied by a published notice will be listed in *The Arrow*. Published notices include a newspaper obituary, a funeral program/prayer card, a listing in a college/university alumnae newsletter or obituaries from newspaper Web sites. Attach the article and e-mail to Alison Bauer, [alison@pibetaphi.org](mailto:alison@pibetaphi.org), or mail to Pi Beta Phi Headquarters.

In Memoriam lists the name, initiation year, month and year of each member who has died.

## Alabama Beta

Carolyn Scruggs Cain  
1953; November 2008

## Arkansas Alpha

Peggy Bosmyer Campbell  
1968; December 2008

Mary Malone Lankford  
1959; December 2008

Beverly Hopper Matteson  
1935; January 2009

## California Alpha

Barbara Niven Noll  
1936; August 2008

## California Gamma

Elizabeth Robertson Gollin  
1957; September 2008

Beverly Sweney Knudson  
1957; December 2008

Maureen Haight Mergenthaler  
1950; October 2008

Nancy MacMillan Walker  
1946; October 2008

## Colorado Beta

Cynthia Johnson Foley  
1948; December 2008

Eleanor Richardson Tipton  
1943; December 2008

Diana Duke Whitfield  
1963; December 2008

## Florida Alpha

Betsy B. Kramer  
1942; November 2008

## Illinois Alpha

Shirley Matchett Mason  
1961; October 2008

## Illinois Beta-Delta

Beth Walter Bivens  
1961; December 2008

## Illinois Delta

Edith Brown McKenzie  
1924; October 2008

## Illinois Epsilon

Sherrie Benjamin Salsman  
1971; May 2008

## Illinois Eta

Ann Wright Cushing  
1957; October 2008

Mary Lively Winninger  
1941; October 2008

## Illinois Zeta

Jane Rollo Tierney  
1937; May 2008

## Indiana Alpha

Jane McDaniel McNew  
1938; September 2008

## Indiana Beta

Colleen Allen Alexander  
1950; October 2008

Janis M. Chapline  
1963; December 2008

## Indiana Delta

Nancy Kelsey Cavanaugh  
1945; October 2008

Doris Gamble Gammon  
1938; January 2009

## Indiana Epsilon

Cheryl Mackey Colby  
1966; November 2008

## Indiana Gamma

Margaret Dinkelaker Hull  
1944; December 2008

Gwendolyn Schort Burris Tanner  
1929; December 2008

## Iowa Alpha

Margaret Hall Weaver Hicklin  
1936; December 2008

## Iowa Gamma

Barbara Lytle Luther  
1947; July 2008

Barbara Short Marseille  
1949; July 2008

## Kansas Beta

Betty Miller Meadows  
1933; September 2008

Karen Peterson Welch  
1955; January 2009

## Kentucky Alpha

Carolyn Motley Horning  
1942; September 2008

## Louisiana Alpha

Gloria Grehan Ellis  
1937; December 2008

Mary Porter Nolan  
1938; November 2008

## Louisiana Beta

Jane Hainkel Drennan  
1962; December 2008

## Massachusetts Alpha

Barbara Oak Robinso  
1938; October 2008

## Massachusetts Beta

Mary Carney Rockwell  
1944; August 2008

## Michigan Beta

Isabel Morrison Byrne Reade  
1943; November 2008

## Minnesota Alpha

Norma Everett Parry  
1927; December 2008

---

**Mississippi Alpha**

Mary Murphree Sarphie  
1961; October 2008

**Missouri Alpha**

Mary McKeown Edwards  
1941; December 2008

**Montana Alpha**

Marian Lamberg Cullen  
1944; November 2008

**Nebraska Beta**

Jodi Fuerst Haniszewski  
1978; January 2009

**New York Alpha**

Melissa Galenski  
2000; November 2008

**North Carolina Alpha**

Jane McDonough Flynn  
1942; April 2008

**North Carolina Beta**

Nancy Clover  
1946; December 2008

**North Dakota Alpha**

Alice Danuser Anderson  
1939; January 2009

Mary F. Cave  
1933; October 2008

**Ohio Alpha**

Ione Stewart Bigler  
1946; January 2009

Betty Fulton Drake  
1940; December 2008

**Ohio Beta**

Sylva Minder Finley  
1934; October 2008

Barbara Bangham Hiney  
1953; April 2008

**Ohio Epsilon**

Elsie Keddie Connin  
1945; November 2008

**Ohio Zeta**

Patricia Herbert Lannigan  
1945; August 2008

**Oklahoma Beta**

Mary Lou Taft Bond  
1955; January 2009

**Oregon Alpha**

Betsy Schwabe Hanecak  
1956; October 2008

Dorothy Vandeneynde  
Steelhammer  
1943; December 2007

**Oregon Gamma**

Gini Balk McLellan  
1948; December 2008

**Pennsylvania Gamma**

Angela Hull Jacobs  
1940; November 2008

**South Carolina Alpha**

Mary Poston Taylor  
1945; October 2008

**South Dakota Alpha**

Mary Woods Sommervold  
1953; November 2008

**Tennessee Gamma**

Cathey Butler Holme  
1973; January 2009

**Texas Gamma**

Elizabeth Craig Nagle  
1953; December 2008

Claire D. Shelton  
1960, affiliated Texas Beta;  
December 2008

**Utah Alpha**

Afton Ryberg Boyd  
1939; July 2008

Margie Silvers Pettigrew  
1949; November 2008

**Washington Alpha**

Roberta Huffman Bulleri  
1943; October 2008

Frances Macdonald Rockwell  
1947; January 2009

Judy Smythe Sutherland  
1943; December 2008

**West Virginia Alpha**

Jane Nelson Heston  
1939; July 2008

**Wisconsin Alpha**

Nancy Duggar Adams  
1931; November 2008

Lauren Michelle Dengis  
1999; December 2008

Jane Stouffer Williams  
1947; January 2009

**Wisconsin Gamma**

Kathryn Elwes  
1946; November 2008

**Wyoming Alpha**

Shirley Olsen Fernau  
1948; January 2009

# Pi Phi Express



A



B

C



D

E

ΠΒΦ



F



G

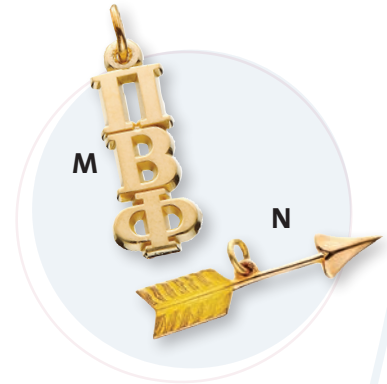
J

H

- |    |      |   |         |
|----|------|---|---------|
| A. | X863 | Stadium Cup<br><i>30 oz. plastic tumbler</i>  | \$3.00  |
| B. | X723 | Greek Letter Flip Flops<br><i>Whole sizes 6-11</i>  | \$20.00 |
| C. | X742 | Dot Flip Flops<br><i>Whole sizes 6-11</i>   | \$20.00 |
| D. | X177 | Vintage Football Jersey<br><i>Applied 4" Greek letters, junior fit, 100% cotton</i>   | \$30.00 |
| E. | X810 | Polar Fleece Throw<br><i>48" x 60", 100% polyester</i>  | \$24.00 |
| F. | X762 | Greek Letter Hat<br><i>Embroidered with wine and silver blue letters</i>  | \$12.00 |
| G. | X108 | Applied Greek Letter T-Shirt<br><i>White basic crew with 3" blue letters and wine stitching, ladies fit, 100% cotton</i>            | \$21.00 |
| H. | X407 | Football Pants<br><i>An old-school look on the classic sweat, 2"-wide tie-cord waistband and roomy fit, 60/40 cotton/poly blend</i> | \$34.00 |
| I. | X400 | Cheer Short<br><i>3" inseam, 100% cotton</i>  | \$15.00 |
| J. | X405 | Retro Cheer Short<br><i>Distressed screen print, 2-1/2" inseam, 100% cotton</i>   | \$16.00 |



<b>K.</b>	MD801	Mother's Pin <i>Celebrate your mom with the Pi Phi Mother's Pin, to be worn by any mother of a member Do not have to be a member to wear</i>	\$38.00
<b>L.</b>	MD400	Legacy Badge <i>Raised pearls, engraved point, 10k gold</i>	\$150.00
<b>M.</b>	MD107	Lavalier <i>Approx. ¾" in length, 10k gold</i>	\$50.00
<b>N.</b>	PMD102	Arrow Charm <i>Approx. 1" in length, 10k gold</i>	\$75.00
<b>O.</b>	MD158	Official Crest Ring <i>We've brought back one of our most popular rings from the past, sterling silver with garnet</i>	\$125.00
<b>P.</b>	MD223	Founders' Ring <i>Special order, 10k gold and onyx</i>	\$300.00
<b>Q.</b>	PMD222	Halo Necklace <i>Give her a halo of her own, approx. 18" in length, sterling silver &amp; cubic zirconia</i>	\$35.00
<b>R.</b>	MD174	Heritage Necklace <i>Large disk engraved with "Pi Beta Phi" and "1867," approx. 18" in length, sterling silver</i>	\$50.00
<b>S.</b>	PMD223	Arrow Wrap Bracelet <i>Hinged for easy wearing, sterling silver</i>	\$100.00
<b>T.</b>	MD221	Beaded Bracelet <i>Engraved disk, sterling silver</i>	\$60.00



To view our  
complete line visit  
[www.pibetaphi.org](http://www.pibetaphi.org)

or call 1.800.322.1867

## New Anti-Hazing Hotline

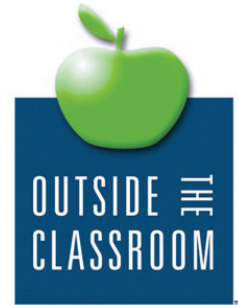
Pi Beta Phi is proud to announce its partnership with the Greek Anti-Hazing Hotline. The toll-free number, (888) NOT-HAZE or (888) 668-4293, is available to those who think they, or students they know, have been or may become victims of hazing. Callers may remain anonymous, or they can provide personal information so their concerns can be responded to directly. The hotline connects to a dedicated voice mailbox at the Cincinnati law firm of Manley Burke, the publisher of Fraternal Law. Manley Burke monitors the hotline on a daily basis and forwards all messages to the appropriate fraternal organization, along with the hazing laws from the relevant jurisdictions.

*Please note: The original Pi Beta Phi hotline is no longer in service.*



## Caring Enough to Confront

Mental health issues can affect anyone at any time. As part of the Fraternity's ongoing commitment to the well-being of our members, we are pleased to offer Fraternity officers and Alumnae Advisory Committee (AAC) members the opportunity to learn more about mental health issues among college students through free access to the online program MentalHealthEdu™. Outside the Classroom, Inc., the pioneering leader in online, science-based prevention programs and tools, developed MentalHealthEdu. The program, which takes about 30 minutes to view, helps advisers recognize the importance of mental health issues on campus by identifying and interpreting the warning signs of distress exhibited by students. Fraternity officers and AAC members interested in taking this course should contact Director of Programming Becky James, [becky@pibetaphi.org](mailto:becky@pibetaphi.org).



## Arrowmont

*The Arrow* is sorry to lose the presence of Arrowmont in this issue. Because of budget constraints, Arrowmont has decided not to purchase space. Be sure to visit [www.arrowmont.com](http://www.arrowmont.com) to learn more about Arrowmont events, including Pi Phi Arts Weekend April 16-19.



# Have you moved or changed your name?

Help us keep our database updated. Edit your member profile online at [www.pibetaphi.org](http://www.pibetaphi.org), or send this form to:  
Pi Beta Phi Headquarters 1154 Town & Country Commons Drive, Town & Country, MO 63017.

\$25 Check, payable to Pi Beta Phi Fraternity, for Fraternity Alumna Dues enclosed.  
*Dues are not tax deductible for federal tax purposes.*

For office use: Ref # \_\_\_\_\_ Region \_\_\_\_\_ Amount \$ \_\_\_\_\_ Check # \_\_\_\_\_ Code AID \_\_\_\_\_

Initiated Name (first/middle/maiden)

Name (first/maiden/last)

New Address

City/State/Zip

Phone Number

E-mail Address

Chapter and Year of Initiation

If you are an officer in the Fraternity, please give your title.



## Pi Beta Phi Recognized by the Association of Fraternity Advisors Foundation

At the Association of Fraternity Advisors' (AFA) annual meeting in December 2008, Pi Beta Phi was recognized for its gifts to the AFA Foundation. National Panhellenic Conference Delegate CAROL INGE WARREN, North Carolina Beta, accepted the award on behalf of the Fraternity from AFA Foundation board member and Director of Greek Life at North Carolina State University, John Mountz. The Fraternity also hosted a breakfast for all Pi Phis attending the conference. AFA was founded in 1976 to support the professionals involved with advancing fraternity and sorority life as well as promote the fraternity and sorority experience.





Pi Beta Phi Fraternity  
 1154 Town & Country Commons Drive  
 Town & Country, MO 63017

CHANGE SERVICE REQUESTED

NONPROFIT  
 ORGANIZATION  
 U.S.  
 POSTAGE PAID  
 DULLES, VA  
 PERMIT NO. 490

## Is something different here?

**Have you moved or changed your name?**

Help us keep our database updated. Edit your member profile online at [www.pibetaphi.org](http://www.pibetaphi.org), or send this form to: Pi Beta Phi Headquarters, 1154 Town & Country Commons Drive, Town & Country, MO 63017.

\$25 Check payable to Pi Beta Phi Fraternity, for Fraternity enclosed. Alumna Dues  
Dues are not tax deductible for federal tax purposes.

For office use: Ref # \_\_\_\_\_ Region \_\_\_\_\_ Amount \$ \_\_\_\_\_ Check # \_\_\_\_\_ Code AID \_\_\_\_\_

Initiated Name (first/middle/maiden) \_\_\_\_\_  
 Name (first/maiden/last) \_\_\_\_\_  
 New Address \_\_\_\_\_  
 City/State/zip \_\_\_\_\_  
 Phone Number \_\_\_\_\_  
 E-mail Address \_\_\_\_\_  
 Chapter and year of initiation \_\_\_\_\_

If you are an officer in the Fraternity, please give your title.



*Yes! The back cover of The Arrow has been redesigned to fit within new postal standards. You'll find your change of address and alumnae dues mailer on the inside back cover.*