

# *The Arrow*

## At Home with the Grand President

Page 25

ALSO INSIDE:

How to Pi Phi  
Up Your Home

Page 30

Pi Beta Phi  
Welcomes Back  
South Carolina Alpha

Page 36





Friends & Leaders for Life

## PI BETA PHI FRATERNITY

ΠΒΦ

Founded 1867

### FOUNDERS

Emma Brownlee Kilgore  
Margaret Campbell  
Libbie Brook Gaddis  
Ada Bruen Grier  
Clara Brownlee Hutchinson  
Fannie Whitenack Libbey  
Rosa Moore  
Jennie Nicol, M.D.  
Inez Smith Soule  
Fannie Thomson  
Jennie Horne Turnbull  
Nancy Black Wallace

### MISSION STATEMENT

The mission of Pi Beta Phi Fraternity for Women is to promote friendship, develop women of intellect and integrity, cultivate leadership potential and enrich lives through community service.

### VISION STATEMENT

Pi Beta Phi Fraternity is committed to being recognized as a premier organization for women by providing lifelong enrichment to its members and contributing to the betterment of society.

### CORE VALUES

Integrity  
Honor and Respect  
Lifelong Commitment  
Personal and Intellectual Growth  
Philanthropic Service to Others  
Sincere Friendship

# The OF PI BETA PHI Arrow



## Features

- 25 At Home with the Grand President
- 30 How to Pi Phi Up Your Home
- 33 10 Ways to Revive Your Tired Space
- 36 Pi Beta Phi Welcomes Back South Carolina Alpha
- 38 Register for Convention and Reach New Heights in Chicago

### Follow us online:



Facebook®  
[www.facebook.com/pibetaphi](http://www.facebook.com/pibetaphi)  
[www.facebook.com/pibetaphifoundation](http://www.facebook.com/pibetaphifoundation)



Pinterest®  
[www.pinterest.com/pibetaphi](http://www.pinterest.com/pibetaphi)



Instagram®  
[www.instagram.com/pibetaphihq](http://www.instagram.com/pibetaphihq)



Twitter®  
[www.twitter.com/pibetaphihq](http://www.twitter.com/pibetaphihq)  
[www.twitter.com/pibetaphifndn](http://www.twitter.com/pibetaphifndn)



LinkedIn®  
[www.linkedin.com](http://www.linkedin.com)



YouTube®  
[www.youtube.com/pibetaphihq](http://www.youtube.com/pibetaphihq)



Pi Beta Phi Blog  
[www.piphiblog.org](http://www.piphiblog.org)

Facebook® is a registered trademark of Facebook, Inc.  
Instagram® is a registered trademark of Instagram, LLC.  
LinkedIn® is a registered trademark of LinkedIn Corporation.  
WordPress® is a registered trademark of Automattic Inc.

Pinterest® is a registered trademark of Cold Brew Labs, Inc.  
Twitter® is a registered trademark of Twitter, Inc.  
YouTube® is a registered trademark of Google, Inc.



View  
*The Arrow*<sup>®</sup>  
 online at  
[www.pibetaphi.org](http://www.pibetaphi.org)

**ARROW EDITOR**

Constance Dillon  
 editor@pibetaphi.org

**MARKETING & COMMUNICATIONS  
 DIRECTOR, HEADQUARTERS**

Eily Cummings

**GRAPHIC DESIGNER**

Jordan Aschwege

**EDITORIAL STAFF**

Jennifer Whitrom Schmidt  
 Janelle Schroeder  
 Katie Jackson

**GRAND COUNCIL**

Paula Pace Shepherd  
 Grand President

Cara Ballard Sutcliffe  
 Grand Vice President Collegians

Diane Bielman  
 Grand Vice President Alumnae

Julie Carney  
 Grand Vice President Communications

Rae Wohlhueter Maier  
 Grand Vice President Finance

Cindy Rice Svec  
 Grand Vice President Membership

Marla Neelly Wulf  
 Grand Vice President Programming

# Departments

- 2 Perspective
- 3 From our Readers
- 4 Campus Living
- 6 Collegiate News
- 10 Alumnae News
- 14 Foundation
- 16 In Her Words
- 17 National Panhellenic Conference
- 18 Read > Lead > Achieve<sup>®</sup>
- 21 Pi Phi Pens
- 23 Volunteers
- 35 Remember
- 42 Reunions & Anniversaries
- 44 In Memoriam
- 46 Pi Phi Express<sup>®</sup>
- 48 News & Notes



ON THE COVER: Our homes are the spaces we decorate with photographs and mementoes of the past. They are the places we create new memories with our families, friends and Pi Phi sisters. Read more about Pi Phi at home, including a look inside the home of Grand President PAULA PACE SHEPHERD, Texas Epsilon, starting on Page 25.



Member Fraternity Communications Association

**PI BETA PHI HEADQUARTERS**  
 1154 Town & Country Commons Drive  
 Town & Country, Missouri 63017  
 (636) 256-0680 • FAX (636) 256-8095  
[headquarters@pibetaphi.org](mailto:headquarters@pibetaphi.org)  
[www.pibetaphi.org](http://www.pibetaphi.org)

## May There Always be an Angel in Your Life

Somewhere along the way, I became a collector. It happened by accident with a gift here and a purchase there, all that fit the same theme. The collection initially occupied a window ledge and a few boughs on the Christmas tree. As it grew, it began to occupy my dresser top and a shelf next to the sofa. The opportunities to add to the collection were only enhanced at Pi Beta Phi conventions during the Convention Boutique, where many an angel could be purchased before a full complement of Pi Phi Express items. Yes, I collect angels.



LISA GAMEL SCOTT  
Fraternity Housing Corporation President  
Colorado Alpha  
University of Colorado

It (of course) started with my initiation into Pi Phi. But today, 33 years later, angels are still so poignant in my life. They exemplify my tie to Pi Phi as a member and a legacy — my mother is a Pi Phi. They remind me of my children, especially my daughter, and the mentors in my life who helped me become the woman I am today. They describe my friends, many of them Pi Phis, and the relationships I have with them, which are filled with fun, adventure, laughter and sincerity.

Angels are a subtle part of the décor in our home. My husband and children not only approve but also partake. I adore the large iron angel on the window ledge of my laundry room, the chalk painting of angels (a gift from my husband), the iron angel in my garden, a ceramic plate displayed on a shelf and a watercolor painted by a friend. I display angels on a ledge in my bedroom, another on the fireplace mantle, a few in the china cabinet and a stained glass gal in the window. My family and guests love the small Christmas tree in my formal dining room where only angel ornaments hang. My stocking holder is an angel as well.

For many years, some of my angel collection lived in storage boxes. One of the highlights when my daughter was born was unpacking each and every angel and creating a display in her room, which has glass shelves around the perimeter, just below the ceiling. We now collect together and have added angels to the display over the years.

My favorite activity with my two past alumnae clubs and my current pocket is the annual angel gift exchange. Everyone knows my package; wrapped in angel paper. I give angels as gifts and happily receive them often, as friends know about my collection.

These angel mementos carry so many memories: the people who gave them as gifts, the places I've traveled, special events and the love and peace that an angel brings. If you are looking for a subtle reminder of Pi Phi and to remember the other angels in your life, consider collecting angels.

Love in Pi Phi,

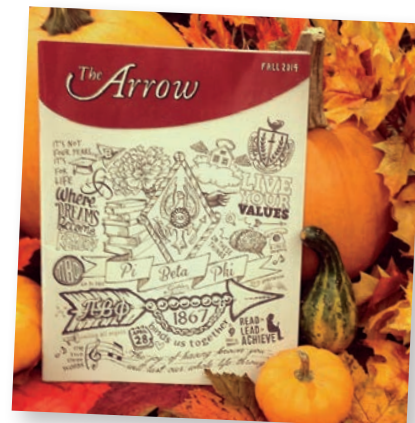
A handwritten signature in cursive script that reads "Lisa Scott".

Lisa Gamel Scott

# From our Readers

## These Loyal Ties Are Always Near

Pi Phi loved the Fall 2014 *Arrow*! We posted this picture of the magazine cover to social media and loved hearing your feedback! Thank you to New York Eta KATHLEEN MERIANO for her beautiful, hand drawn artwork that was featured on the cover and in the feature story.



## What They Said on Instagram

- @jessicamfreeman:** The prettiest cover!
- @chandlelyn:** my favorite!
- @this\_is\_andrea:** This is the best cover!
- @ellemacsmith:** Been a Pi Phi for 16 years — this is my favorite cover yet! Well done!
- @saraclarogarcia:** THE BEST COVER EVER! I'm always amazed by my little sis @kathleenmeriano
- @teeohnah:** this cover is so great!
- @tommyandsusie:** Been a Pi Phi for 45 years, and this cover is in the top 3 for me too! Looking forward to receiving it.
- @phxalumpibetaphi:** What an amazing cover!
- @tmjohnson35:** #mna1phalove !!!!
- @lindseybahr:** Love this cover! It ranks up there with the recent #ringching cover!



We look forward to hearing from you. Email comments to the Editor at [editor@pibetaphi.org](mailto:editor@pibetaphi.org) or mail them to Pi Beta Phi Headquarters, 1154 Town & Country Commons Drive, Town & Country, Missouri 63017.



## What They Said on Facebook

- Jane Heiserman:** GREAT cover! And two thumbs up for including the music of Pi Beta Phi into the montage!
- Sarah Fuller:** The moment I saw this I knew that Kathleen Meriano must have had something to do with it.
- Cheryl Fisher:** Just fabulous!
- Susie Natoli:** Love the cover!
- Nancy Killen Bryant:** I love the cover!!
- Ivonna Anderson:** Great issue and cover as always.



## What They Said on Twitter

- @MemPiPhiAlum:** 304,703 lives were impacted by #readleadachieve efforts in 2013–2014! Pi Phis are making a difference everywhere! @PiBetaPhiHQ #TheArrow
- @libwarren17:** Just my favorite @PiBetaPhiHQ in The Arrow. Keep doing you, @beccascott
- @DevlinKenny:** I'm a published writer! Thanks @PiBetaPhiHQ! #thearrow #fall2014

## Small Changes, Big Impacts

Just like in your own home, updates in the world of chapter housing don't always have to break the bank. Take a look at two Chapter House Corporations (CHCs) who made a big impact by making small changes.

### Michigan Beta, University of Michigan

The Michigan Beta porch was in need of repair as the wood was rotting and the carpet covering the steps was worn out. Before repairing the steps, the CHC consulted an architectural firm and a historic preservation planner. While the construction of a new porch and steps was a large project, the CHC also added new, smaller touches like paint on the shutters, lighting and landscaping to complete the transformation.

B  
E  
F  
O  
R  
E



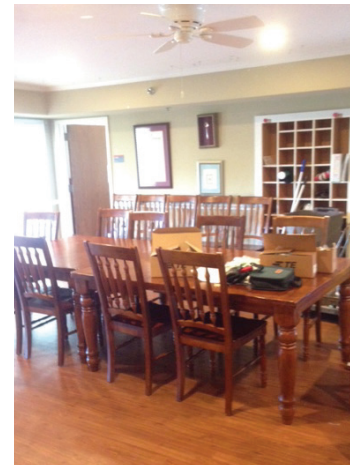
A  
F  
T  
E  
R



## North Carolina Delta, North Carolina State University

The furniture at North Carolina Delta was purchased more than 10 years ago and was mismatched. The CHC could not afford to replace all of it, so they kept a few large pieces while weaving in new, smaller accents such as art and other decorative pieces. In the living room, the CHC chose to keep the large sectional sofa, but brought in new chairs, a new TV stand and new wall accents to freshen up the space. Throw pillows also made a big difference in the room. In the dining room, the CHC gave chapter members more space by replacing a large, bulky table with a small round table.

B  
E  
F  
O  
R  
E



A  
F  
T  
E  
R



## Collegiate Spotlight

Texas Gamma NICOLE PEACOCK chose her major, apparel design and manufacturing, without knowing it would give her the opportunity to help a local family. She also didn't know that family would need clothes for their conjoined twins while the babies spent months in the hospital in preparation to be separated.

Eric and Elysse Mata went into their first ultrasound hoping to find out if they had a boy or girl on the way. The doctors informed them they were having two girls, and that the girls were conjoined at the chest. Despite the odds, the girls were born at 31 weeks and together weighed 7lb 9oz, inspiring their middle names, Faith and Hope. The girls were born with a partially shared diaphragm, liver, pelvis, intestines and lining of the heart.

The Mata couple and their 5-year-old son relocated to Houston from Lubbock, Texas, for the girls' birth. Their hometown rallied around the family, including members of the Texas Tech University community, since the college is just down the road. One of the supporters, who happens to be head of Texas Tech's apparel design department, shared the story with her students, including Nicole.

"As soon as I heard about the project from my professor, I knew I wanted to help," Nicole said. The plan was to create custom clothes for the girls, since they would spend months conjoined, living in the neonatal intensive care unit. After completing an application and presenting her portfolio, Nicole was chosen to be a part of the team.

When the girls were two months old, Nicole and a fellow student flew to Houston to measure the babies and meet the Mata family. "They were so welcoming to us," Nicole said. "When we walked into the room, the parents gave us huge hugs. We spent a few hours hanging out with them, talking and asking what kind of clothes they wanted. The mom told me 'anything girly.'"

Nicole returned home and started working on the outfits. She continued to talk with the family via Facebook and text messages, sharing ideas and discussing colors. Nicole also received updated measurements as the girls grew.

Because she wanted the girls to have more than one outfit, Nicole used some store-bought clothes to create her pieces. She enlarged the necks and waist areas using elastic, made sleeves shorter and ensured each piece had eight holes for



An apparel design and manufacturing major, Texas Gamma NICOLE PEACOCK helped make clothes for the Mata family and their conjoined daughters. The girls partially share a diaphragm, liver, pelvis, intestines and lining of the heart.

eight limbs. Nicole, who grew up with four sisters, also ensured the outfits were color coordinated, but not identical, since she understands the importance of having your own clothes.

"The family sent me pictures right away when they got the outfits," Nicole said. "They kept saying how thankful they were. But I was thankful I was able to help take a little bit of stress off them."

When this story was published, the girls were doing well, weighing approximately 15 pounds each, and were preparing for a separation surgery, to take place in December. The girls breathe on their own, with help from oxygen, and one has started taking a bottle. After separation, the girls will go to a rehabilitation center to learn to balance, crawl and walk on their own.

"This project has been a blessing to me," Nicole said. "I have not only been able to grow my design skills, but most importantly I've been able to meet this family and see how strong they are through such a tough time."



## CALIFORNIA

At the California Epsilon Chapter at San Diego State University, the membership experience is rooted in more than 65 years of history. Each year, the chapter says goodbye to a few members choosing to study abroad for a semester or school year. The women who study abroad together lean on their Pi Phi sisterhood for a sense of home away from home. Their stateside sisters send mail and care packages to help them feel at ease. Pictured is California Epsilon EMILY WILLETT studying abroad in Switzerland.



Fraternities and sororities at the University of California, Riverside, do not have chapter houses, but the organizations found a creative way to provide a home-like atmosphere. Each Wednesday, chapters are allowed to create a “living room” on the University lawn. California Lambda sisters enjoy playing board games, socializing, doing homework and building relationships with other campus groups. From left, California Lambdas EMILY RODAS and STASIA DOMAGALSKI.



## CALIFORNIA

California Zeta SHANNON BOFFA spent 10 weeks in Washington D.C. this past summer for an internship with a United States Representative. As she came home to her apartment one night, prepared to stay in and watch television, three of Shannon’s University of California, Santa Barbara, sisters had flown out to D.C. to surprise her. From left, California Zetas HALEY KILLAM, MORGAN MARSOOBIAN, ASHLEY CATES and SHANNON BOFFA at the White House.



## COLORADO

Each fall, the Colorado Alpha Chapter visits Cottonwood Farms for a day-long extravaganza. The University of Colorado Pi Phis enjoy tractor rides through the corn maze, choosing their pumpkins and taking photos with their sisters. At the end of the day, the women return to the chapter house to carve and decorate their pumpkins. From left, Colorado Alphas KENDALL VANHEE, JAMIE NIED, SARAH DAUGHERTY, JENNA ZIEGLER, SAMI MACEDO and MAAIKE SLOSSE.



## ILLINOIS

For the Illinois Epsilon Chapter at Northwestern University, “Home for the Holidays” means everyone celebrates at the chapter house. Their House Director decorates, their chef bakes holiday treats and the Pi Phis find time for holiday movies in between studying for finals. From left, Illinois Epsilons LIV BAHOU, ASHLEY WU and LILY GOLDSTEIN.



## MISSOURI

The University of Missouri celebrates homecoming in a big way each year. The Missouri Alpha Chapter was excited to participate in homecoming as this year’s theme was, “Oh The Places You’ll Go!” Missouri Alpha had the highest participation in the blood drive for homecoming. Pictured are Pi Phis marching in the homecoming parade.



## INDIANA

Indiana Epsilon Pi Phis look forward to participating in DePauw University’s Greek Week each year. The week is full of events bringing together fraternity and sorority members. This year, chapter members competed in intramural games, a talent show and a can building competition. The chapter also organized a booth at the Greek fair to promote sorority life.



## NEW JERSEY

New Jersey Alphas make Princeton University feel like home by hosting movie nights, study sessions, dinner and gym workouts together. The women also attend their sisters’ theater performances and sporting events, and even travel together, from South Africa to Spain and Italy. From left, New Jersey Alphas CHRISTINE HILDRETH, LINDSEY BERGH and MELISSA ROJO.



## PENNSYLVANIA

During the Washington & Jefferson College Parents' Weekend, the Pennsylvania Zeta Chapter decided to start a **new tradition**. They invited the families of each sister over to their chapter house for an ice cream social. The women shared stories with their families in order to build a stronger connection between their family and their Pi Phi family.



## TEXAS

Sisters from the Texas Beta Chapter enjoy studying **abroad together**. This gives the women a sense of home no matter how far away they may be. From left, Texas Betas SARAH LEVIN and MAGGIE POXON studied abroad in Spain together. The Southern Methodist University Pi Phis have many stories to share with their sisters when they return to campus.



## VIRGINIA

In October, the Virginia Zeta Chapter visited Sinkland Farms for an evening of fresh air and bonding. The Virginia Polytechnic Institute and State University Pi Phis enjoyed pumpkin picking and a candle pass in the barn. From left, Virginia Zetas KRISTIN DECOU, LEIGHTON THOMPSON, GABBY CIRIGLIANO, CAROLINE SNYDER and ANNIE SKORULSKI.



## Alumnae Spotlight

Indiana Epsilon KACY WENDLING had no idea Best Buddies® would bring such amazing opportunities into her life when she became involved with the organization two years ago. Best Buddies is a nonprofit organization dedicated to creating one-to-one friendships, integrated employment and leadership development for adults with intellectual and developmental disabilities (IDD).

Kacy first learned about Best Buddies when her sister, who works for Best Buddies Indiana, encouraged her to participate in a fundraiser, and Kacy quickly fell in love with the organization. “I met so many wonderful people and immediately signed up for more volunteer opportunities,” Kacy said.

To begin her volunteer work, Kacy signed up to be a speech coach. This meant helping adults with IDD create speeches detailing how they got involved in Best Buddies and how the organization has bettered their life. After completing workshops and writing a speech — which they deliver in front of their peers and can later use as a tool for advocacy — these buddies become ambassadors. “This opportunity empowers people with IDD to become leaders and public speakers in their schools, communities and workplace,” Kacy said. “It teaches people with IDD the skills needed to successfully self advocate and become agents of change.”

Kacy was matched with her buddy, Laura, through the Citizens Program of Best Buddies Indiana. The purpose of Best Buddies is to help create an inclusive and diverse community for all. “The Best Buddies Citizens Program Manager interviews potential buddies and matches them based on shared interests,” Kacy said. “The program seeks to match and create friendships with people who likely wouldn’t have crossed paths otherwise.” Laura and Kacy talk every week and spend time together each month. They love to try new restaurants, eat Indian food and cook; they are always sharing recipes.

Kacy’s role as speech coach and friend to Laura were just the beginning of her involvement with Best Buddies Indiana. This year, Kacy entered an eight-week fundraising contest for young professionals. The individual who raised the most funds and spread the most awareness about Best Buddies was named Champion of the Year. During those



Indiana Epsilon KACY WENDLING (center in white T-shirt) participated in an eight-week fundraising contest for Best Buddies Indiana. The Indiana Epsilon Chapter supported Kacy during the campaign, including purchasing these blue T-shirts with 100 percent of the profits benefiting Best Buddies.

eight weeks, Kacy sold T-shirts with 100 percent of the profits going directly to Best Buddies. She also encouraged local companies to engage in the cause by hosting Dine to Donate nights at restaurants and Shop for a Cause days at boutiques, where percentages of the proceeds went back to Best Buddies. Laura helped Kacy during these events as well. “Laura came to one of the restaurant events and signed autographs. We had a blast,” Kacy said.

At the end of the eight weeks, and after she raised more than \$12,700, Kacy was announced as the campaign winner! When asked what was next for her time with Best Buddies, Kacy answered, “I just accepted a position with Best Buddies Indiana and will serve as the Deputy Director of Development.” This position will oversee Champion of the Year in addition to annual fundraising events and campaigns. “Additionally, I would like to focus on increasing the number of socially inclusive work places for people with disabilities in the country and Indiana,” Kacy said. “Eighty percent of adults in the United States with IDD are unemployed, and I want to shrink that number.”

## ALBERTA

This summer, Ontario Gamma DARANNE MILLS HARRIS presented the John Tsetso Memorial Library with a check for \$200 on behalf of Arrow in the Arctic and the Calgary, Alberta, Alumnae Club. The money will go toward the construction of a new library wing, as the current children's library cannot hold any more books.



## CONNECTICUT

In September, two members of the Southern Fairfield County, Connecticut, Alumnae Club volunteered as judges for a CrossFit competition and fundraiser benefiting DOMUS, an organization supporting at-risk youth. From left, Connecticut Alpha ALEXIS COLEMAN and New York Alpha EMILY DERR.



## CALIFORNIA

Pi Beta Phi volunteers from the South Bay, California, Alumnae Club tutor first and second graders at Hawaiian Avenue Elementary School. Last year's students experienced higher test scores at the end of the successful program. Instructional Aide Anna Ordonez (right) explained the school's 2014–15 tutoring kits to California Delta RUTH NEEL NOBLE (left).



## ILLINOIS

In September, the Arlington Heights, Illinois, Alumnae Club made fleece blankets for critically ill children through Project Linus. From left, Missouri Beta SUSAN WITLER VEVANG, Illinois Epsilon WENDY MILLER DAVIS, Illinois Alpha JUANITA WINBIGLER REINHARD, Iowa Alpha BETTY CLARK SCHMIDT and Iowa Zeta SHERRILL BECKWITH SNYDER.



IOWA

In October, Illinois Eta JULIE BOWEN FRANK (right) welcomed her daughter, Iowa Gamma JENN FRANK, (middle) into Pi Phi. That day, Jenn, whose given name is Jennifer Nicole Frank, learned she was named in honor of Founder JENNIE NICOL, M.D. Also pictured is Illinois Eta BETH KLIENTZ SCALIA (left).



LOUISIANA

The Louisiana Beta Chapter House Corporation held a luncheon to share stories about the house and give tours. From back left, Louisiana Beta ANN OSBORN WAMPOLD and Texas Gamma HARRIET MOLTZ COLE. From front left, Louisiana Betas MARSHALL HEFLIN BOURGEOIS and BOOTSIE DUKE HUNDEMER.



LOUISIANA

Members of the Baton Rouge, Louisiana, Alumnae Club gathered at the Louisiana Beta Chapter house to watch the chapter's recruitment skit. The women had fun finding their photos on old composites. From left, Louisiana Betas SHAUNDA PETERSON JOHNSON, MEG CASPER, CHANELLE THIBAUT DELAHOUSSEY, CHERYL PAYNE and LEANNE STAFFORD.



MISSOURI

The Columbia, Missouri, Alumnae Club volunteers with Texas Eta SYDNEY MCKINNEY HAMPTON'S at-risk preschool class. The alumnae club has donated clothing and books along with their time. The Pi Phis enjoy helping local students, as well as supporting a new member of their club. Pictured is Sydney reading to her students.



## OREGON

The Lake Oswego-Dunthorpe, Oregon, Alumnae Club presented a donation of \$150 to First Book® Portland to kick off the club's 2014-2015 theme, "The Gift of Giving." From left, Nicole Sligh of First Book Portland, Oregon Beta CHERIE BRAMBILLA BEATTY and Pennsylvania Zeta SUSAN JONNATTI MAXWELL.



In preparation for the Oregon Alpha Chapter's centennial in 2015, members of the Oregon Alpha Chapter House Corporation (CHC) are fine-tuning plans for a major addition and remodel of the house. The CHC members have spent countless hours working with their architect. From left, Oregon Alphas PAMELA STOUT BORGMAN, JANET UHLENHAKE CLAY, KELSEY JENSEN LEWIS, SHARON LOOMIS GREIG, NANCY PIAZZA COBB and MERRY HUMPHREY MELONAS.



## SOUTH CAROLINA

This fall, Pi Phis gathered to reinstate the Greater Charleston Area, South Carolina, Alumnae Club. From left, South Carolina Alpha PATRICIA AULD SANDERS, South Carolina Beta DIANA PHILLIPS LONDERGAN, Colorado Gamma CHERYL RUVOLO ORR, Virginia Theta KATE ZAWYRUCHA, Illinois Zeta KIMBERLY STINSON MOSS and West Virginia Alpha MEAGHAN POYER.



## VIRGINIA

During the Northern Virginia Alumnae Club kickoff meeting, members were encouraged to get involved during an Interest Group Fair. From left, Pennsylvania Iota ZEB HALINI, Mississippi Alpha STEPHANIE CANSIENNE HEDGE, Idaho Alpha REGINA WOOD, Pennsylvania Iota MICHELE TERESCHUK DAVITT and Minnesota Alpha SONIYA PRITI SHILOTRI JASSAL.



## Do You Believe in the Power of Pi Phi?

Texas Eta MORGAN GRECO'S world turned upside down her freshman year of college when her younger brother, Parry, a young man with special needs, started having epileptic seizures. Doctors discovered a brain tumor and said three back-to-back surgeries were needed. The news was too much to bear alone, so Morgan opened up to her Pi Phi sisters.

"From that first day, when I shared what was going on with Parry, they made sure I wasn't alone," Morgan said. "I had notes on my door, text messages and invitations to lunch. Then, someone in my New Member class showed up at my dorm room just because she had a feeling it might be a hard day for me. After that, I realized Pi Phi was more than an obligation. My sisters were reaching out with support, because they actually cared about me."



Texas Eta MORGAN GRECO (right) and her brother, Parry.

Parry's surgeries were scheduled for August, coinciding with Texas Eta's Spirit Week and the start of formal recruitment at Texas A&M University. For the past several months, Pi Phis had shown Morgan what caring was all about. She wanted to return that support by participating in recruitment, but didn't want to ignore what was happening with her brother. Her parents felt Morgan needed the positive, loving environment Pi Phi offered instead of sitting in the hospital.

So on her parents' advice, Morgan left for school. Thankfully, the surgeries went well. One evening, as Morgan prepared to make the two-hour drive to the hospital to visit her recuperating brother, one of her Pi Phi sisters asked her to approve something they were working on in another room.

When she stepped into the room, the entire chapter was waiting for her. Her Pi Phi sisters had created a huge poster for Parry, signed with words of love and encouragement. They even trimmed it in yellow because Morgan had once mentioned Parry's favorite color is yellow. Along with the poster, they included a note reading, "Because you are our sister ... Parry is our brother, too!"

"That's when I realized the power of Pi Phi," Morgan said. "I understood Pi Phi is so much more than just my group of friends." She brought the poster with her to the hospital, and Parry lit up when he saw it, reading each message. Amazingly, just six days after his surgeries, doctors said Parry was ready to go home — one month ahead of schedule.

Morgan returned to school and graduated with a degree in special education. She now serves Pi Beta Phi as a Resident Leadership Development Consultant (RLDC) at the



University of South Carolina. She chose to be a LDC in order to give back to an organization that gave her so much love and support. In her role, Morgan helped colonize a new chapter, planned sisterhood events and mentored the newest members of Pi Phi. In November, more than 200 collegiate women were initiated as South Carolina Alphas.

“The women of South Carolina Alpha never fail to inspire me,” Morgan said. “When I witness their dedication to making a difference in the Carolina community, watch them fall in love with a Pi Phi song for the first time or see them rally around a sister, they remind me of the immense blessing Pi Phi is to me.”

Parry’s journey continues as well. He has successfully completed three years of an eight-year medical plan. He loves trains and having conversations with everyone he meets. Though they live in different time zones, Parry talks to his sister frequently via FaceTime.

“Parry loves unconditionally and reminds us what parts of life are truly important,” Morgan said. “The lessons my family has learned over the past four years have made us stronger, and I am proud to say my family is mine.”

Morgan is also inspired by the Pi Phis she’s worked with this year, including numerous Pi Phi volunteers and her fellow LDCs. Each of these women strive daily to uphold the mission, vision and values of Pi Phi and are dedicated to developing our sisterhood.

“I’ve learned the power of Pi Phi extends far beyond the walls of the Texas Eta Chapter house,” Morgan said. “It resonates through each woman who has the opportunity to wear the golden arrow. I am beyond grateful I’ve crossed paths with so many of these inspirational women. They continue to challenge me in becoming the very best I can be, and they serve as the greatest role models and friends.”

When her time as an LDC ends, Morgan plans to continue giving back to Pi Phi. Because of the example set by her Pi Phi mentors, she wants to mentor sisters in the future. She also recently made her first gift to Pi Beta Phi Foundation. It is because of gifts to the Foundation that recent graduates, like Morgan, have the opportunity to serve as LDCs. Since 2000, the Foundation has granted more than \$1.5 million to the Fraternity for leadership programs. This support helped Pi Beta Phi hire 15 women to serve as LDCs this year — our largest class ever — to assist chapters with crucial development initiatives and ensure a brighter future for Pi Beta Phi.

“Because Pi Phi gave me, and continues to give me, more than I could have ever hoped for, I plan to serve to the best of my abilities,” she said. “I cannot imagine my life without Pi Phi. So with gratitude, I will give back to the organization that I, and my family, love so dearly.” ↷



Top: From left, Leadership Development Consultants (LDCs) ABIGAIL CAMP, Ohio Beta; JULIA HOHN, Arkansas Alpha; and MORGAN GRECO, Texas Eta; helped recruit New Members for the South Carolina Alpha Chapter at the University of South Carolina.



Bottom: This fall, Texas Eta MORGAN GRECO (center) joined South Carolina Alpha New Members while they participated in the Champions are Readers® program at a local school. Inspired by her time with the chapter, Morgan gave her first gift to Pi Beta Phi Foundation. Because of gifts to the Foundation, recent graduates like Morgan have the opportunity to serve as LDCs.



# IN HER WORDS



## NICOLLE DEVENISH WALLACE CALIFORNIA BETA

### IN A NUTSHELL ... TELL US ABOUT YOU

I'm a mom, wife, daughter, dog mom and sister. I'm also the author of three novels, a contributor to MSNBC's "Morning Joe" newscast and Co-host of "The View" on ABC.

Previously, I served as Communications Chief for George W. Bush's White House and re-election campaign.

### PI PHI TAUGHT ME ...

*"That a sisterhood among women is possible at every stage of life."*

ADVICE FOR UP-AND-COMING PROFESSIONAL WOMEN

### WHY I LOVE MY JOB

I get to talk to amazing, iconic, hilarious, brilliant women every day.

### FAVORITE WORKPLACE EXPRESSION

Who's that? (I ask this about almost every celebrity.)

### HOW DO YOU KNOW WHEN YOU'RE SUCCESSFUL?

When you're happy.

### BEST ADVICE YOU'VE EVER RECEIVED

Karen Hughes told all of her staff at the White House to always give President Bush our unvarnished opinions.

### LEAST FAVORITE WORD

Broken

### FAVORITE PI PHI MEMORY

Roadtrips to the University of California, Los Angeles and University of Southern California football games.

### WHO INSPIRES YOU?

My mom. She has four kids who worship her, a great marriage and a million times more girlfriends than I ever had. She also still works with my dad in their antique business, finds time to work out every day and is a great grandma to my son. She's my hero.

Left Brained  Right Brained

Heels  Flats

iPhone  Android

a.m. coffee  a.m. iced tea

Hours a week 40+  50+  60+

BE KIND TO OTHER WOMEN.  
HAVE THEIR BACKS.

## Panhellenic Friends: The 2014 NPC Annual Meeting

By: Cynthia Weston, Kappa Delta, NPC Third Alternate Delegate

National Panhellenic Conference (NPC) Delegates, Executive Directors and Inter/national Presidents gathered October 24–26, 2014, in St. Louis for the 2014 NPC Annual Meeting.

The meeting started Friday with a session dedicated to trends in higher education presented by Dawn Watkins, Delta Delta Delta, a Partner and Vice President of Plaid, an organizational management firm focusing on higher education and related organizations. Dawn, who has more than 20 years of experience in higher education administration, offered an overview of developments in and outside the classroom.

That night, NPC Chairman Jean Mrasek, Chi Omega, led the opening general session. Jean gave the state of NPC address, which highlighted the initiatives and achievements of the past year and plans for the year ahead. The evening ended with voting on legislation, followed by a reception.

On Saturday, delegation members participated in training and discussion, while Presidents and Executive Directors met in their respective tracks, including time allotted to visit the vendor exhibits.

During the second general session that afternoon, delegates voted on remaining legislative proposals. Eight organizations then made special presentations in honor or memory of women who have given notable service to the fraternal world, including Deb Ensor, past Zeta Tau Alpha Alternate Delegate and longtime Executive Director.

Oklahoma Beta PATTI BOULANGER JOHNSON gave the keynote address at dinner. Her message, “What’s Your Wave?” captured the common characteristics of those who affect change. She also challenged the audience to conquer their personal fears in the interest of positive action. A career and workplace expert, Patti is CEO of PeopleResults, a change and organizational development firm whose clients include PepsiCo, Microsoft, 7-Eleven and Frito-Lay. Each attendee received her book, “Make Waves: Be the One to Start Change at Work and in Life,” which she autographed later during a reception.

An evening meeting focused on two recent research projects pointing empirically to the value of sorority membership. First, Brandon Busteed, Executive Director of Gallup Education, discussed the 2014 Gallup-Purdue Index



Career and workplace expert PATTI BOULANGER JOHNSON, Oklahoma Beta, (left) gave a keynote address at the 2014 NPC Annual Meeting in St. Louis. Patti is pictured with NPC Chairman Jean Mrasek, Chi Omega.

study of nearly 30,000 college graduates, which showed a correlation between sorority and fraternity affiliation and subsequent workplace engagement, sense of purpose, loyalty to one’s alma mater, attachment to one’s community and physical and financial well-being. Brandon is a nationally known speaker and author on education policy and public health, and also serves on the national Board of Directors for Alpha Tau Omega Fraternity.

Next, Patrick Biddix spoke about “Sorority Membership and Educational Outcomes,” a study positively correlating sorority membership to several measures of college/university student retention. Patrick, who conducted the study, is Associate Professor of Higher Education and Coordinator of the College Student Personnel Program at the University of Tennessee-Knoxville.

On Sunday, NPC hosted its first chapter management summit. More than 60 professionals and volunteers who serve the collegiate sector for the 26 inter/national organizations attended. Inter/national Presidents and the NPC Delegates also met and enjoyed a final time together, while looking forward to working in concert to advance the sorority experience in the year to come. ↪

## Impacting Lives One Small Step at a Time

Pi Phis are working every day to reach our goal of impacting one million lives through Read > Lead > Achieve. Many Read > Lead > Achieve service events start small, but grow thanks to the dedication of countless Pi Phis. One such event is the Arkansas Alpha Chapter's Pi Beta Phi 5k, which started as a small idea and today, has grown into one of the University of Arkansas' largest and most anticipated campus events.



Top: The Arkansas Alpha Centennial Gate on the University of Arkansas campus is the starting line of the chapter's annual 5k.

Bottom: Arkansas Alpha Chapter members and friends dressed up as Dr. Seuss® characters at the race.

In 2006, Arkansas Alpha CAITLIN SIMPSON WEST approached the University of Arkansas' Associated Student Government President with an idea. The chapter's Executive Council was looking for a way to bridge the gap between the Greek community and other student groups and thought a 5k would be a fun activity to bring many different groups together.

The idea was approved and planning began. That first year, nearly the entire Arkansas Alpha Chapter helped plan and execute the event. Chapter members joined committees based on their interests and worked tirelessly for more than two months to make sure the event was successful.

The first race was held on the morning of a Razorback football game during Family Weekend in the fall of 2006, providing an atmosphere of excitement and a scenic route through campus for the 5k. Until that time, no race had been allowed through campus the morning of a football game. The first year was a huge success; students and their families loved it. Even the University of Arkansas championship track team participated. The inaugural event attracted more than 300 runners and raised \$8,000 for a local organization working in literacy.

This year marked the ninth annual Pi Beta Phi 5k, which now benefits The Literacy Fund at Pi Beta Phi Foundation. The event boasted more than 2,000 participants and raised more than \$53,900. Funds are raised through business partnerships, registration fees and family donations. A partnership with the Gamma Upsilon chapter of Sigma Nu for the last eight events has provided not only extra hands on race day, but added exposure and support.

Milo Bailey, Sigma Nu's Service Chair, believes it's good to be involved. "I think it's very important for fraternities and sororities to come together on campus," he said. "It takes away from all of the negativity seen in the media and shows communities how big of an impact Greek life can make. If we were able to raise \$52,000 for one event held on one day, imagine what else could be accomplished if other joint events were held?"



Runners prepare to start the Arkansas Alpha Chapter's Pi Beta Phi 5k. Last year, the event garnered more than 2,000 participants and raised more than \$53,900. Part of the proceeds benefited The Literacy Fund at Pi Beta Phi Foundation, which supports all Read > Lead > Achieve initiatives.

The Fayetteville community also looks forward to the 5k each year. Community members and businesses sponsor the race, donate prizes for race winners and even participate. In the past, Arkansas Alpha worked with the City of Fayetteville and the Fayetteville Police Department to help direct traffic on the busier streets along the racecourse. This year, the women collaborated with campus police to host the race entirely on University of Arkansas' campus. Since 2012, the starting line has been the Arkansas Alpha Centennial Gate, celebrating 100 wonderful years of the partnership between the Arkansas Alpha Chapter and the University of Arkansas.

The chapter is always looking for ways to improve upon previous Pi Beta Phi 5ks. In 2013, Arkansas Alpha AMY COSGROVE introduced the idea of a book drive in conjunction with the race. Originally, books were solicited from Pi Phis and their families. In 2014, the book drive was opened to the entire fraternity and sorority community at the University of Arkansas in order to collect more books. The competition resulted in more than 2,000 books being donated and distributed to various programs throughout Fayetteville, including local classrooms and family shelters.

All this started with an idea. One Pi Phi chanced to say "What if?" and encouraged her sisters to join her. With powerful and creative Pi Phis like the Arkansas Alpha Chapter, we are well on our way to impacting one million lives by 2017! ↪

## Start Small, Grow Big

The Arlington Heights, Illinois, Alumnae Club brought the Champions are Readers (CAR) program to Sunny Hill Elementary School nine years ago. Today, October is known as CAR month at the school, and students look forward to the program. Even the Pi Phi husbands get involved and read with the students.

For more than 15 years, members of the Indiana Theta Chapter at Valparaiso University have volunteered at Hilltop Neighborhood House, which provides care and education for children from diverse backgrounds. The women tutor and read to children, recently earning them Hilltop House's Outstanding Service Award.

In 1984, the Houston Alumnae Club opened the Pi Beta Phi Patient Family Library out of a refurbished linen closet at Texas Children's Hospital. The club then started installing book nooks in numerous Texas Children's health centers and on-campus clinics. Today, there are more than 130 Pi Phi book nooks throughout Houston.

The San Jose, California, Alumnae Club began the CAR program 10 years ago at Blackford Elementary School. California Epsilon LESLIE ARMSTRONG ANIDO says spending time with the students through the CAR program allows the Pi Phis to "build relationships because the students don't always have an adult who shows an interest in them."



# FRATERNITY DAY OF SERVICE

## March 2

- Pass out literacy awareness ribbons on campus or at work.
- Hold a book drive.
- Host a birthday party for Dr. Seuss at your local library.
- Hold story time at a nearby bookstore.
- Join or start a book club at your community center.
- Make a contribution to The Literacy Fund at Pi Beta Phi Foundation.
- Invite your Champions are Readers participants to a reading celebration.
- Create a photo booth and ask friends to dress and pose as literary characters.
- Share The Story of One video on your Facebook page.
- Be creative and tweet and Instagram what you do! #readleadachieve

*How are **YOU**  
celebrating this year?*

Start your planning now! Find more ideas at  
[www.pibetaphi.org/fraternitydayofservice](http://www.pibetaphi.org/fraternitydayofservice).

ERICA BROOKHART

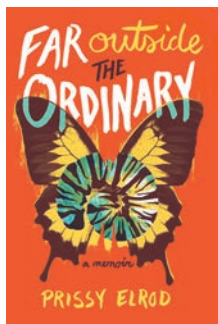
## CHICO LEARNS TO SWIM

“Chico Learns to Swim,” by Colorado Gamma ERICA BROOKHART, is the story of how one little boy overcomes his fear of water. With the help of the local lifeguard Kahuna, Chico is able to envision himself as an eagle flying through the water. This book is the first in a series, each focusing on learning a new experience and having fun along the way.



## FAR OUTSIDE THE ORDINARY

PRISSY LANDRUM ELROD



An emotionally honest account, “Far Outside the Ordinary” chronicles the period in Florida Beta PRISSY LANDRUM ELROD’S life after her 50-year-old husband was given less than one year to live. Never one to take no for an answer, Prissy enlisted help as she was determined to save her beloved husband. This story shows how people from different cultures learn to love and respect each other while working to support a man at the end of his life.

LYNN SCHWARTZ DURHAM

## FROM FRAZZLED TO FANTASTIC

Did you know five minutes of remembered anger can depress your immune function for up to six hours? Connecticut Alpha LYNN SCHWARTZ DURHAM’S book, “From Frazzled to Fantastic — You’re One Thought Away From Feeling Better” is filled with stories, comments, suggestions and quotes. The book references medical research to prove the psychological and physical benefits in healthy thinking and feeling good.



BARBARA BEESON STUBER

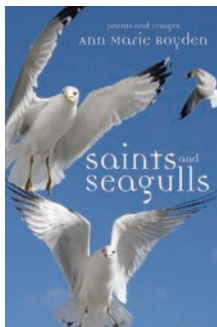
**GIRL IN REVERSE**

Kansas Alpha BARBARA BEESON STUBER’S novel, “Girl in Reverse,” follows the story of Lily, an adopted Chinese-American girl in 1951 Kansas City. With the Korean War raging, Lily’s Asian heritage makes her a target. For Lily, war is everywhere — the dinner table, the halls at school and especially within her own skin. Lily perseveres and becomes a “monuments woman” in her own right uncovering her true creation story among rare Chinese artifacts at the art museum.



**SAINTS AND SEAGULLS**

ANN MARIE BOYDEN



Utah Alpha ANN MARIE BOYDEN published her first collection of poems, “Saints and Seagulls.” The work reflects musings from her youth and early career in the Salt Lake Valley to her later relocation to Virginia. Some of the poems are funny, some evoke memories and some challenge our thinking, but all the poems are honest expressions of Ann’s personality.

JAN FREEMAN HIXSON

**WAIT ‘TIL YOU HEAR WHAT I HEARD**

In “Wait ‘til You Hear What I Heard,” Arkansas Alpha JAN FREEMAN HIXSON describes life in a small Texas town for 11-year-old Carol Ann. She is bored to tears living in the Bible Belt, but that is about to change. Her life is turned upside down when a girl from California arrives and challenges small-town, Southern customs from the top of her straightened hair to the bottom of her go-go boots. Carol Ann discovers there is more to life than she knew, and it isn’t as boring as she thought.





## Everything I Need to Know, I Learned from Pi Phi

By: KAYLA MCCARTHY ERLANDSON, Alberta Alpha

Without my experiences as an undergraduate Pi Phi, I would never have discovered my passion for community service and found a lifelong career path. My membership in Pi Phi has allowed me to grow as a person, learner and citizen of the world.

I may have never gone through formal recruitment had it not been for some encouragement from a friend. No one else in my family was part of a Greek organization, so I didn't know the path it could lead me down.

But by my junior year of college, I was hooked. I had been elected to serve on our Panhellenic Council after holding several leadership roles in my chapter. And because of my Panhellenic role, I was able to attend an Association of Fraternal Leadership & Values conference. Being able to represent Pi Beta Phi on a larger scale helped me realize I could make an impact on a greater community, not just on my own campus or within my chapter.

It was those leadership experiences that shaped my career path today. My experience planning events, as Vice President of Event Planning for the Alberta Alpha Chapter and Vice President of Recruitment for our Panhellenic Council, and the value of philanthropic service to others, instilled in me by Pi Phi, led me to choose nonprofit event planning as a career. Today, I work for Parkinson Alberta as the Event and Volunteer Coordinator. Most recently I planned the Step 'n Stride event, which raised more than \$340,000 to provide support services, education, advocacy and funds for Parkinson's disease research.

I am also a member of the Edmonton, Alberta, Alumnae Club, which I joined after hearing about the wonderful leadership opportunities from a Pi Phi sister. I was excited to become an alumna leader and give back to the organization that gave me so much while I was in college. Before too long, the opportunity to take on the role of Club President came up, and I was thrilled to accept.

This past June, I was able to travel to St. Louis, on behalf of the Edmonton Alumnae Club, for the Alumnae Leadership



Because of her Pi Phi experiences as an undergraduate, Alberta Alpha KAYLA MCCARTHY ERLANDSON knew she wanted to pursue a career in nonprofit event planning. As an alumna, she gives back to the Fraternity by serving as an alumnae organization leader.

Summit. There has never been a time where I was more proud or excited to be a Pi Phi! I met so many inspiring women and realized no matter our age or Pi Phi role, we are all sisters. After the event, I returned home energized and ready to share my Pi Phi-focused energy with the rest of my club.

For many people, especially young alumnae, it may seem that Pi Phi ends once you leave college. But that is so far from the truth. As an involved alumna, I continue to build the friendships I made in my chapter and meet and grow new friendships with alumnae in my area, and even internationally! One of the coolest things is being able to say I have friends all over the world, and it's all thanks to the volunteer opportunities in Pi Phi. ↪



# Pi Phi AT HOME

At Home with the Grand President .....	Page 25
Your Pi Phi Home by the Numbers .....	Page 29
How to Pi Phi Up Your Home .....	Page 30
Your Little Angel's Space .....	Page 32
10 Ways to Revive Your Tired Space .....	Page 33
Arrows, Angels and Admiration .....	Page 34

# AT HOME WITH THE *Grand President*

Keller, Texas, is an unassuming suburb of Fort Worth. Located near the main road, Keller Parkway, also known as 1709 if you're from the area and remember when the farm-to-market roads had only numbers and not names, is a subdivision with brick homes and beautifully landscaped yards.

Grand President PAULA PACE SHEPHERD, Texas Epsilon, and her husband, Dave, have lived in their home for 12 years. "When I look at a home, the curb appeal can make or break it for me. It is very important to me to have a warm and welcoming feel to a home. It is the invitation to come in," Paula says. "Once inside, I always look for good bones. I love trim work, special finishes and little things like that. So we bought our house because it not only met our needs, but it had good bones."

Paula and Dave grew up in the Dallas-Fort Worth area. Though they attended the same high school and college, the University of North Texas, the couple didn't start dating until after graduation when mutual friends re-introduced them. After living in College Station, Texas, while Dave completed his veterinary degree, the couple went on to purchase Roanoke Animal Hospital, just a few towns over from Keller. Today, Dave is a veterinarian while Paula manages the finances of the business and its 30 employees.

When she is not traveling for Pi Beta Phi, you will find Paula in her home office, with her "fur babies," Gretchen and Halle, named after actress Halle Berry, at her feet while she answers emails and participates in conference calls. Situated in a front corner of the house, the room is painted a bluish green, with tall bookshelves lining one wall and the desk placed in the center of the room. The closet is filled to the brim yet organized, with cabinets neatly containing Pi Beta Phi files and financial paperwork for the animal hospital. The office is home to many of Paula's Pi Phi treasures, including her Initiation Certificate signed by past Grand President JEAN WIRTHS SCOTT, Pennsylvania Beta, and dozens of pictures of her "Pi Phi family." The Greek letters "ΠΒΦ" peek out from various notebooks, pens and knickknacks around the room.



“It is very important to me to have a warm and welcoming feel to a home. It is the invitation to come in.”

Paula describes her daily routine while laughing at the crazy schedule. “Dave leaves early in the morning and sometimes I go into my office with my pajamas on,” she says. “It is not unusual for me to get immersed in my work and look up at noon and realize the morning has flown by while I’ve corresponded with Pi Phi volunteers, staff and other National Panhellenic Conference International Presidents on Fraternity business and of course spent some time on animal hospital business as well. I grab a bite to eat and get back to business. Before I know it Dave is home at the end of the day, and it’s time for dinner.” Family responsibilities, work and Pi Phi business — they never stop. But her busy schedule is full of life.

After just one conversation with Paula, you know she is a storyteller. When she shares her memories and experiences, she deftly provides details like how the room was decorated and what people said, making you feel like you were right there in the moment. When you talk with Paula, you’ve lived the same experiences and met the same people she has. It’s an extraordinary quality and one that makes you feel welcomed and included.

Her home tells a story too. What you need to know is that Dave and Paula are art collectors. Their home is full of art; it’s everywhere. It’s paintings: hanging above the mantle and in the bathrooms and above beds. One entire living room wall is a collection of paintings, each hung in its place above the piano for a specific purpose. It’s pottery: situated on bookshelves and displayed in the kitchen. And it’s even outside: iron sculptures lining the flowerbeds and vintage signs decorating the patio, near the barbecue and by the comfy outside chairs.

“My husband is an art lover and when he grows up he wants to be an artist,” Paula says smiling. “We started enjoying this part of life together after we visited a friend’s home, years ago, who collects, and it was like walking into a gallery and it really had an impact on us. Shortly after, we bought our first piece. And it’s like eating potato chips: you can’t just have one piece of art.”

That first piece of art, the one that started it all, hangs prominently above the living room fireplace and can be seen from the front door. It’s a watercolor, in the image of a cross, with deep, royal purples and bright streaks of green. Before the painting hung in their house, it was hanging on the wall of their favorite local restaurant, The Classic Café at Roanoke, boasting a menu of American favorites like ribeye steak from the nearby cattle ranch and creamy, luscious tomato basil soup made with ingredients from the garden out back. Paula spotted the painting one night and unbeknownst to her, Dave contacted the restaurant owners, who happened





to attend the same church, and happily sold their Aunt Carolyn's painting because Aunt Carolyn's work is always for sale. And Christmas morning that year, Dave wrapped it in a large bow and surprised Paula with the painting.

Now, when Dave and Paula go on vacations, they keep an eye out for art galleries. "We don't plan a vacation around it, but if we go someplace we're always looking for the local artist to see if there's a treasure we can take home," Paula says.

In addition to the artwork, two rambunctious Schnauzers greet visitors to the Shepherd home. As Paula says, "You think dogs don't have personalities? Oh no, no, no." When Gretchen and Halle are not keeping Paula company in her office, they are perched atop a sofa with a direct vantage point to the front door and main thoroughfare of the home, keeping tabs on Paula's movement from the bedroom, to the office and to the kitchen. Their signature Schnauzer eyebrows and beards quiver with excitement when any unusual activity (ahem, strangers), disrupts their otherwise peaceful day.

The dogs tag along when Paula walks on her treadmill for one hour each afternoon. It's her time for herself, to be healthy and time to watch her "guilty pleasure" shows on TV like "Top Chef" and "Dancing with the Stars." The treadmill is located in the home's only upstairs room, a loft set up as half gym and half media room. It's

the place where Dave and Paula relax, and Gretchen and Halle can roughhouse on the carpet floors.

When Paula is not home, she is often traveling for Fraternity business. The Grand President attends new chapter installations, quarterly Grand Council meetings, National Panhellenic Conference meetings, Pi Beta Phi Foundation Halo Happenings and numerous chapter and alumnae organization celebrations, to name a few. Our Fraternity is rapidly growing and developing new programs, events and marketing efforts to meet the needs of our members. As she leads the Fraternity, Paula is driven and guided by our core values and mission.

“The role of Grand President is not about me, it’s about the organization,” Paula says. “I always said running a sorority isn’t rocket science, but sometimes it is fraught with difficult decisions that directly impact someone’s life. We are a sisterhood, and it’s about the people and the relationships and I take that very seriously. When I was elected Grand President, my best friend gave me a clay angel holding a heart and in her card she wrote, ‘if you always lead with your heart, people will follow you and you will be successful.’ I keep that as a reminder and try to always lead with my heart. As long as I’m doing what I believe is right for Pi Beta Phi, then I’m doing all right.”

## WHAT'S IN HER Office



### Collage

When Paula receives a card that makes her laugh out loud or contains a sweet note, she adds it to her collage on the wall. In addition to cards, the collage contains photos and trinkets from family and friends.



### Family photos

Photos of her family and her Pi Phi sisters surround Paula. Many were taken in Hawaii, where Paula’s best friend and

pledge sister, Texas Epsilon CAROLE MORGAN BRENTS, lives. Others are from Pi Phi events and include a photo with Paula’s mentor and past Grand President MARY LOY TATUM, Oklahoma Beta.



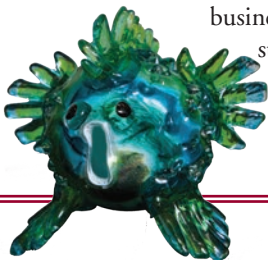
### Doodle

This handmade Pi Phi drawing is by New York Eta KATHLEEN MERIANO and contains a nod to Paula’s alma mater, the University of North Texas. It was created after Paula was elected Grand President at the 2013 San Diego Convention.



### Glass Puffer Fish

Paula found this glass-blown puffer fish at an art show and keeps him on her desk. When things are busy with Pi Phi business or her full-time job, managing the staff and finances of an animal hospital, a quick glance down at his funny face helps alleviate her stress.



### Artwork

Like the rest of her house, Paula’s office is decorated with artwork. An animal hospital staff member painted the Schnauzer wearing a patriotic bandana. A family friend, Aunt Carolyn, painted the whimsical cat painting on 9/11 to bring brightness to a devastating day. If you look closely, the black and white cat is eyeing the colorful, painted fish on the table.



# Your Pi Phi Home by the numbers



Personal House



Pi Phi Housing Facility

Cost: \$250,000



FAMILY OF 4

3 BEDROOMS, 2 BATHROOMS  
1 WASHER AND DRYER

\$3,000 NEW CARPET

\$2,000 Property Tax *(average per year)*

\$1,000 Homeowners Insurance *(average per year)*

2,000 SQUARE FEET



Cost: \$4 Million



50 WOMEN

26 BEDROOMS, 6 BATHROOMS  
3 WASHERS AND DRYERS

\$27,000 NEW CARPET

Exempt from Property Tax

\$17,000 Homeowners Insurance *(average per year)*

15,000 SQUARE FEET



## Thank You Pi Phi Volunteers!

Today, more than 500 Chapter House Corporation volunteers manage Pi Phi housing facilities across North America. These Pi Phi alumnae help create a positive collegiate experience for our members. They update and renovate the facilities as needed, manage facility employees, pay all facility-related expenses and fundraise. Maintaining more than 1 million square feet of housing on college campuses is not an easy task, and we thank them for their service!

# HOW TO *Pi Phi* UP YOUR HOME

A home is all about personal style. Whether modern or traditional, coastal or rustic, design is fluid. The next time you find yourself looking around and thinking your house, apartment or bedroom could use a change, consider adding a touch of our treasured Fraternity.



## THE COLOR PALETTE

Pi Beta Phi's wine and silver blue are beautiful, strong colors, but may also pose a challenge. "In a house, you might not love the wine color as much as you think you will," says Interior Designer JANIE KLEINSCHMIDT HIRSCH, Louisiana Beta. Instead she suggests using a blue tone and pairing it with a neutral tone, which keeps the room calm and more sophisticated.

## THE WALLS

Remember wallpaper? Yes, that pesky stuff you've been removing for the past 15 years is making a comeback. And it's fabulous. You can design your own look and order it online. It's also easier to install than years ago and adds a hint of class that only wallpaper can. You can also try adding a fresh coat of paint. Interior Designer COURTNEY CUTCHALL CUNNINGHAM, Oklahoma Beta, suggests a blue-gray tone, which is popular and will mesh well with wine and silver blue accessories. If you think gray is too dark, try painting one or two accent walls and finding a lighter neutral to match.

## STORAGE

Homes are never built with enough storage, right? Add a buffet or hutch to act as a focal point for your keepsakes and wedding china. In your living room, create built-in shelving and add a variety of sized picture frames of your sisters to add a personal Pi Phi touch. In a bedroom, you can use shelves as extra storage and to display Pi Phi awards and trophies.



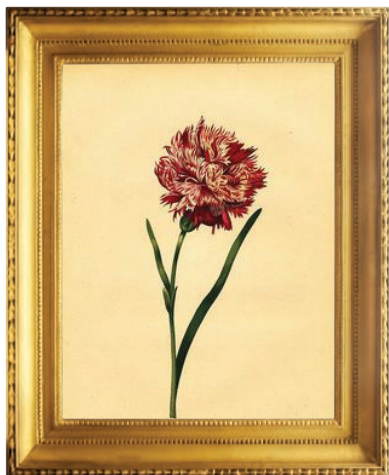


## ACCESSORIES

Find upholstery in creamy or earth tones and then add contrasting accessories. Pillows or window treatments can add wine and blue to a room. Consider browsing discount stores or break out the sewing machine to create your own.



Collect arrows of all sizes to add in groupings. Courtney recommends using a glass jar to display smaller arrows on a coffee table, like these available at Pi Phi Express.



Framed carnations are just botanicals, but if you look closely, Pi Phi will know exactly why you chose them. These framed prints also add pops of color to a neutral wall.

Residence hall rooms and apartments are often not a large space, so Courtney suggests starting with something small like arrow sheets, often available in children's home décor departments in twin sizes, which are perfect for collegiate bedrooms. Add one statement item to hang on the wall.



## ✓ Dos AND Don'ts OF REMODELING

Cosmetic changes are more fun, but some of the most necessary updates are related to plumbing, heating and air conditioning systems and exterior areas like patios and fences. Here are a few ideas to help prepare for your projects.

### ✓ Plan Ahead

Keep a list of installation dates and warranties for things like your boiler, air conditioner, water heater and roof. Before starting a project, consult your list to determine if one of these crucial pieces may need attention.

### ✓ Create a Budget

Before hitting the stores, sit down and brainstorm a budget. The list doesn't have to be detailed, but it should include a ballpark figure of how much you want to spend. Consult your budget throughout the project to stay inline and keep costs down.

### ✓ Have a Safety Net

It's a good idea to build a cushion into your budget in case something goes wrong. In fact, all Chapter House Corporations are encouraged to keep 30 to 50 percent of their annual operating expenses in a reserve in case of unexpected expenses to Pi Phi housing facilities. That practice is smart for individuals too and can help prevent unnecessary headaches.

### ✓ Choose Appropriate Materials

Your home is stylish and functional, but it also takes a lot of wear and tear. Choose furniture and accessories that are durable. A white linen sofa may not survive get-togethers. Instead, find another popular, but cost-effective option that will withstand the test of time.

# YOUR LITTLE *Angel's* SPACE

Whether you're expecting, already swaddling your new bundle of joy or preparing a space for your grandbaby to nap during visits to your home, try incorporating Pi Beta Phi into your little angel's space.



Our colors are gender neutral, so have fun with them by adding a blue upholstered glider or a wine-colored throw blanket from Pi Phi Express. Otherwise skip the colors altogether and focus on arrow and angel accents instead.



Don't forget about the books! It's not a décor idea, but consider choosing books about angels and remember how important it is to read to your own little angel.



Babies and stuffed animals go together like Pi and Phi. Buy a teddy bear complete with wings and halo to sit on a nursery shelf and look over your little one while he or she is sleeping.

## YOUR PETS ARE LITTLE ANGELS TOO! YOUR FURRY FRIENDS WILL EAGERLY WELCOME YOUR PI PHI ENTHUSIASM WITH WAGGING TAILS.

Add a vinyl decal to the wall above their food and water bowls that includes arrow or angel elements. You can even create a custom doghouse decal complete with Greek letters! Put your companion's bed in the "doorway" and your furry angel will be sitting in Pi Phi style.

Add a Pi Phi touch with accessories, like a wall-hanging arrow with hooks for leashes, silver blue or wine-colored ceramic food and water bowls, or arrow or angel pet collar.



What better way to make your pet feel included than his or her own set of angel wings? There are several options available from small wings that attach to collars, larger sets that fasten around the body with Velcro or even screen-printed on a bandana.

# 10 ways to revive your *tired* space

Tips from Certified Redesign Specialist BEA MORSE, D.C. Alpha, and Professional Organizer JODY MORSE AL-SAIGH, New York Alpha.

## 1. Form Follows Function

Consider how you or your family will use the space and choose furnishings, fabrics and colors that work with your lifestyle. A space for a family with small children will be quite different than a space for a young career woman. Who will use the space and for what purpose?



## 2. Always have a Focal Point

A focal point anchors the space. It can be a key piece of furniture or an architectural component such as a fireplace. Be sure your decorating draws the eye to that element.

## 3. Use Multipurpose Furnishings

Find furnishings that serve a dual purpose in order to open up your space: ottomans that store blankets; storage chests that double as coffee tables, etc.

## 4. Repurpose and DIY

Freshen up worn wooden chairs or tables with a coat of paint or complete refinishing. Cover tattered books with wallpaper remnants or fabrics to add interest and sparkle to bookcases. Paint or wallpaper the back wall of a bookcase to contrast with the rest of its color or finish.

## 5. Clear the Clutter

Keep a bin with handles nearby to quickly pick up items that belong in other areas. Keep only what you need in that space to reduce visual clutter and distraction.

## 6. Labels and Color-Coding

Bring like items together for storage in decorative boxes or baskets. Label if needed. Group items with similar colors and tones together, such as clothes in a closet grouped by color or items on a desk arranged by size and shape.

## 7. Paint and Color Choices

Paint is the least expensive way to change the look of your space. Neutral tones give a plain backdrop to other colors in the space, or you can add strong colors to make a statement or provide an accent wall. Warm colors in hues from red to yellow, including orange, are bright, splashy and exciting. Cool colors

from green to violet, and including blue, all slow down the body rhythms and provide a calming effect.

## 8. Use Contrasts

Mixing cool accents with a predominantly warm color scheme can result in a striking space without wearing out the eyes. Contrasting light colors (yellows or light greens) with darker hues provides contrast and shows off the furnishings or accessories in a space.

## 9. Improve the Lighting

Upgrade to a higher quality bulb and add decorative light fixtures to brighten up the space. You should also clean windows to let in natural light.

## 10. Accessorize

The quickest way to update a room is to switch out the accessories. You have things in your home you may not realize are accessories. Try “shopping the house” to bring in items from one room for display in another. A backgammon board may be just a game to some, but it has visual pattern that can be a decorative element. Look at the shape, color, texture and size of items. Groups of odd numbers work best, such as three items in varying sizes or textures.

# ARROWS, *Angels* and Admiration

Many Pi Phis have a special angel or arrow item on display in their home. These treasures remind us of our sisters and our love for Pi Beta Phi!



This five-foot wooden arrow, handmade by Ohio Alpha KRISTI KINNARD and her brother, hangs above the Ohio Alpha Chapter's sectional couch. It even lights up!



The Ohio Epsilon's Chapter House Corporation decorated the lodge with wine and silver blue pillows, wall decals and arrow accessories.



Florida Epsilon CARA WALL ROESNER framed buttons she received at her first alumnae organization meeting. The frame is surrounded by gifts from her Pi Phi sisters.



Missouri Alpha KAREN CONSALUS PRICE received this Lladro angel as a gift from past Grand President CAROLYN HELMAN LICHTENBERG, Ohio Alpha.



The perfect addition to Virginia Gamma CHANTAL HOUGLAN'S frame gallery is an arrow.



Made from a piece of china, this angel was given to South Carolina Alpha MARY COLLAR WALL by her parents.

Every holiday season, needlepointed angels, handmade by alumnae organizations and chapters, adorn the Christmas trees at Headquarters.



# Remember

By: FRAN DESIMONE BECQUE, New York Alpha Fraternity Archivist and Historian

## An Angelic Project

An article in the December 1949 *Arrow* told of a fundraising project of the Kansas City, Missouri, Alumnae Club. The club was selling ceramic figurine angels, “so sweetly sentimental in their wine and blue and gold raiment that they are bidding to become a Pi Phi trademark.” The club started selling the angels shortly after the song “A Pi Phi is an Angel in Disguise” began to circulate among chapters.

Artist MARGARET MITCHELL, Missouri Beta, (her given name was Marguerite) designed the angels and made them in her Kansas City studio. Her signature, “M.E.M.,” was signed on the bottom of each angel. The Pi Phi angels were “handcrafted in exquisite tints with an affectionate artistry giving each perky little angel a personality all her own.” Phoebe was “pint-sized and pigtailed, her long blue robe failing to conceal one irrepressible bare foot beating out a Pi Phi polka.” Polly the Pepster was in a cheerleader pose. Penelope stood serenely “with her secret — a bell tinkles beneath her ruffled skirt.” Barbara had curly hair and Belinda clasped her diploma. Each was clad in a flowing pale blue dress with a golden arrow over her heart. Some carried a wine carnation. The angels cost \$5 each including shipping. Anyone purchasing 20 angels received one free. There was a display of the angels at the 1950 Jasper Park Convention.

In the late 1990s, alumnae in the Kansas City area donated some of the angels to Pi Phi Headquarters. A few months ago, an Oklahoma Beta alumna contacted Headquarters. She acquired some of the angels from a relative and wanted to donate them to the archives. These angels were more intricate than the angels Headquarters already had, but there was no doubt that they had been made by the same artist. There on the bottom were the “M.E.M.” initials.

An Internet search found a 2007 obituary for 99-year-old MARGUERITE EARDLEY MITCHELL. A look at the Pi Phi database led to the realization that in 1955, she was an alumna initiate of Missouri Beta. A search of *The Arrow* found information about a November 1952 meeting of the Saint Louis Alumnae Club where “Mrs. D. M. Mitchell who originated the Pi Phi Angels described the process by which they are made and decorated.”

At that time, Missouri Beta ALICE WEBER MANSFIELD JOHNSON was Grand President and lived in Saint Louis; it is likely the two women knew each other and that is, perhaps, how the alumna initiation came to happen.

In the obituary, Margaret’s artistic skills were enumerated. She began her career making greeting cards. In the 1940s, she started M.E.M. Ceramics, creating a line of angels and nuns. They were sold in stores such as Marshall Field’s, Dayton-Hudson and fine gift shops. She sold about 65,000 of the figurines before she tried her hand at other mediums including oils, watercolors and enamels. Her artworks have been exhibited in museums and galleries throughout the country. ↪



These ceramic angel figurines, on display at Headquarters, were sold by the Kansas City, Missouri, Alumnae Club as a fundraiser in the 1940s and 1950s.

## Pi Beta Phi Welcomes Back South Carolina Alpha

In November, Pi Phis celebrated the reinstatement of the South Carolina Alpha Chapter at the University of South Carolina. The weekend was special for many, especially South Carolina Alpha alumna SUE HUNGATE and her newly initiated daughter, NATALIE HUNGATE.

*Sue and Natalie Hungate are not your typical Pi Phi legacy story. Sure, they are mother and daughter and yes, they are South Carolina Alphas. But what makes their story unique is that until this fall, being initiated into the South Carolina Alpha Chapter would not have been possible. In 1985, after 59 years on campus, South Carolina Alpha voted to relinquish its charter because of low membership numbers. However, in the fall of 2012, the University of South Carolina Panhellenic Council voted to open for extension. Pi Beta Phi submitted materials and offered a formal presentation to the University's Extension Committee and, in February 2013, the Fraternity received the invitation to recolonize. And so, here we are today. South Carolina Alpha has returned to campus and with it, this story of then and now, told by mother and daughter.*



From left, South Carolina Alphas — and mother and daughter — NATALIE HUNGATE and SUE HUNGATE.

**SUE:** When I was a student at college, I belonged to the Pi Beta Phi. That time is a few years back, but it is still fresh in my memories. Rush, as it was called then, was the first week of school, and it lasted only a week. We met at the Women's Quad to sign up, visited all the sorority rooms we were interested in throughout the week and then anxiously awaited our invitation for the last night's parties. Just as now, you could attend two parties, but you

had that feeling of where you belonged. We did a lot together. We participated in intramurals — all sports that we could. (They didn't let women do it all.) We also studied together and watched television in the sorority room. Most important to us were our sisterhood events and helping others.

**NATALIE:** Growing up, my mom would get together with these women she called "sisters," but I thought my aunt was her only one. As I got older I began to realize these women were her sorority sisters — and as my mom explained — they may not be sisters in blood, but they were sisters all the same. They were bonded through experiences and tradition all because of Pi Phi. They would talk to each other all the time, travel together to the beach every summer and just be there for each other.

The older I got, the more I wanted to join Pi Phi and have these relationships. But I was saddened to find out that my dream college no longer had a Pi Phi chapter. I thought I would never gain the wonderful sisters I had seen my mom spend years of her life with. But as my senior year of high school began, I received some of the most exciting news; Pi Phi was coming back to the University of South Carolina during my first year of college.

My rush was a little different than my mother's. First, it's now called "recruitment." Second, I participated in both the University of South Carolina's formal sorority recruitment and Pi Phi colonizing recruitment. During formal recruitment, more than 1,600 women participated hoping to find a home with one of the 11 sororities currently on campus. Because Pi Phi was rechartering, they participated in only part of formal recruitment, and then had their own recruitment a month later. I was so happy when I learned I had received a bid from Pi Phi.



South Carolina Alpha reinstallation members gather for a photo at the installation banquet.

**SUE:** I received my bid not via email or a phone call but by invitation, which was placed under my door in the residence hall overnight. The next morning everyone met at Women's Quad and there was chaos, shouting, screams and hugs. The sororities then had rooms rather than houses or even a Greek Village full of chapter houses, but it was home all the same.

**NATALIE:** I'm so proud to be a South Carolina Alpha and a legacy of this great chapter. Going through Pi Phi recruitment and becoming a part of South Carolina Alpha was one of the greatest decisions I have made so far in college. My favorite sisterhood events this semester were making Pi Phi banners to hang in our rooms and painting Pi Phi Halloween pumpkins on the grass in the Horseshoe (the original part of USC's campus). But most of all, I've enjoyed the little moments with my sisters, whether that's hanging out together in someone's apartment or room or just walking across campus together. It's those moments that I hold close in my heart.

**SUE:** Well, amidst a few shed tears, hugs and laughter, the initiation experience made a memory for both me and my daughter and with some of my pledge sisters beside me, it made the ceremony all the more richer for everyone. I look forward to listening to her excitement, her experiences and her new found friendships in her sorority life along the way.

**NATALIE:** I now understand what my mom meant when she said that sisters aren't necessarily by blood. They are bonded through similar experiences, values and goals. They are the women who will have your back and help pull you back onto your feet when you fall. My sisters, and Pi Phi, are my home away from home here at South Carolina. No matter how many years pass, we will always be sisters and have memories to last a lifetime and create more as the years go by.

**SUE:** So now we are mother and daughter but also very special sisters bound by wine and silver blue and the golden arrow of our sisterhood tie. ↪

### About South Carolina Alpha

Pi Phis, including South Carolina Alpha alumnae, joined 206 South Carolina Alpha collegians and four alumnae initiates to celebrate the chapter's reinstallation weekend November 21–23, 2014. Campus leaders joined the Pi Phis for a Cookie Shine on Friday night. Pi Phi alumnae from 43 chapters, as well as family and friends, attended the installation banquet on Saturday night. In honor of reinstallation of her chapter, past Grand President SARAH RUTH "SIS" MULLIS gave the keynote address.

Throughout their New Member period, the collegiate women learned what it means to be a Pi Phi and also immersed themselves into the University of South Carolina fraternity and sorority community. During the fall semester, the women hosted a booth at Trick-or-Treat with the Greeks, participated in homecoming activities with the gentleman of Sigma Phi Epsilon and formed a team for Gamma Phi Beta's kickball tournament.



# REGISTER FOR CONVENTION AND REACH NEW HEIGHTS IN CHICAGO

Registration for Pi Phi's 2015 Convention in Chicago is now OPEN! To register for convention and to learn more, visit [www.pibetaphi.org/convention](http://www.pibetaphi.org/convention).

## CONVENTION PROGRAMMING

No matter the Pi Phi hat you wear, the four days of the 2015 Convention will be packed full of educational opportunities offering something special just for you. Five unique tracks will inspire collegians, chapter officers, advisors, alumnae, alumnae organization leaders and CHC volunteers. Check out the convention website at [www.pibetaphi.org/convention](http://www.pibetaphi.org/convention) to learn more about the convention programming tracks available. You will need to select a track when registering for convention.

## REGISTRATION INFORMATION

The Hilton Chicago on Michigan Avenue, in the heart of downtown Chicago, will host Pi Phi's 2015 Convention. Visit the convention website, [www.pibetaphi.org/convention](http://www.pibetaphi.org/convention), for additional hotel information. When it comes to registering for convention, there are several registration types. So before you register, please think about what type of registrant you are. Early bird pricing ends March 30, 2015, and registration pricing will increase after that day. If you need assistance registering or if you have questions, please email [events@pibetaphi.org](mailto:events@pibetaphi.org) or call Pi Beta Phi Headquarters at (636) 256-0680.

## THANK YOU CONVENTION LOCAL COMMITTEE



Thank you to the Convention Local Committee! From recruiting volunteers to planning the Opening Dinner to helping with props and decorations, these women are helping Pi Beta Phi Reach New Heights! From back left, Illinois Theta MEGHAN GAUEN, Illinois Theta LESA ROSENTHAL MOSKOWITZ, Indiana Theta AMANDA RYCHTANEK and California Gamma STEPHANIE JOHNSON PITHER. From front left, Ohio Epsilon KRISTI COMES NIHISER and Wisconsin Delta STEPHANIE PLANCICH.



## INTRODUCING OUR KEYNOTE SPEAKERS



**BARBIE OLIVER TOOTLE**

*Ohio Beta — Friday General Session*

Barbie will set the tone for the weekend and challenge participants to make the most of their convention experience. Those who attended the 2014 Alumnae Leadership Summit demanded Barbie return to the Pi Phi stage, and we're pleased she agreed!

Barbie is President of Left Field Consulting, which provides freelance writing services, consultation in communication strategies and training in creativity and personal development. For 15 years, Barbie was Director of Special Projects and Special Assistant to the President of The Ohio State University. She spent 11 years as OSU's Coordinator for Greek Affairs, working with 63 fraternities and sororities. She is a founding member and past President of the Association of Fraternity/Sorority Advisors and a member of the Board of Directors of Order of Omega honor society.



**PATTI BOULANGER JOHNSON**

*Oklahoma Beta — Monday General Session*

How can you become a Wave Maker? Explore the practices of individuals who start a lasting change, or wave, through influence and engaging others. Patti will share how Wave Makers think, how they make decisions and what actions they take. Your wave may be a change within your team or a much bigger wave impacting your entire organization.

Patti is a career and workplace expert and CEO of PeopleResults, a change and organizational development firm. She is the author of "Make Waves: Be the One to Start Change at Work and in Life." She and her team advise clients such as PepsiCo, Microsoft, 7-Eleven, Frito-Lay and many others on creating positive change in their leaders and organizations. Previously, Patti was a Senior Executive at Accenture, where she played an essential role in their talent program.



**DR. MARI ANN CALLAIS**

*Monday General Session*

Mari Ann will share a message, based off Sheryl Sandberg's book, "Lean In: Women, Work and the Will to Lead," exploring why women have a tendency to sit back passively when given the opportunity to step into leadership roles. Women work alongside men every day, share responsibilities in the workplace, home and athletic fields. So, why are women paid less, promoted less often and oftentimes slighted when great accomplishments are made?

Mari Ann has worked in higher education for 16 years, and currently is the Director of Development for Delta Delta Delta's Center for Living, Learning and Leading. She has served in numerous volunteer positions, including as past President for her sorority, Theta Phi Alpha. She has presented more than 500 workshops on fraternity and sorority leadership, team building and values.



PRE- AND POST-CONVENTION TOURS



**Chicago Architectural River Cruise**

Friday, June 26 | Depart hotel at 12:30 p.m. | \$68/person

In approximately 90 minutes you will learn more about the history, architecture, culture and flavor of Chicago than most of the locals learn in a lifetime! The Architectural River Cruise spotlights more than 50 historic and architecturally significant sites where you will discover a new perspective on the city. Aboard the Architectural River Cruise you will experience the city of Chicago in a unique way, from Bauhaus to Art Deco and Neoclassical, famous architectural styles will greet you at every turn. Walk from the Hilton Chicago or take a short taxi ride to arrive at the boat docks, just below bustling Michigan Avenue in the heart of Chicago.

**Holt House Tour in Monmouth, Illinois**

Tuesday, June 30 | Depart hotel at 8 a.m. | \$120/person

Depart the Hilton Chicago and travel back in time to Monmouth, Illinois. Enjoy lunch and an afternoon touring Holt House, Stewart House (Kappa Kappa Gamma birthplace), Monmouth College and the nearby cemetery where some of Pi Phi's founders are laid to rest. Celebrate the birthplace of Pi Beta Phi with reflections of this memorable time to be shared by Fraternity Archivist and Historian FRAN DESIMONE BECQUE, New York Alpha. Round trip travel is provided by motor coach. Depart Monmouth and return to Chicago with a boxed dinner to enjoy on the return trip. Attendees will arrive back at the hotel around 8 p.m.

## CONVENTION AGENDA

### Friday, June 26

- Travel day and “Wear Your Letters Day”
- Optional Pre-convention Tour: Architectural River Cruise
- Meet Grand Council
- Opening Dinner
- Opening general session

### Saturday, June 27

- Regional meetings
- Elections
- Recognition Lunch
- Legislation
- New chapter charter presentations
- Dinner by Chapter/Banner Parade

### Sunday, June 28

- Memorial Service
- Educational programming (includes Alumnae Leadership Summit and FHC Housing Symposium)
- Heritage Lunch
- Initiation Ceremony
- Foundation Dinner

### Monday, June 29

- General session
- Educational programming (includes Alumnae Leadership Summit and FHC Housing Symposium)
- New officer installation
- Wine Carnation Banquet

### Tuesday, June 30

- Optional Post-convention Tour: Holt House Tour in Monmouth, Illinois

## CONVENTION 2015 PRICING

The following convention pricing is for early bird pricing, which ends March 30, 2015. Convention pricing will increase after that day.

**Full Time/Double Occupancy:** \$1,310

**Full Time/Single Occupancy:** \$1,655

**Weekend/Double Occupancy:** \$710

**Weekend/Single Occupancy:** \$890

### Daily Registration\* Rates

Full Time	\$199
Part Time	\$139
Daily	\$89

*\*Meals are not included in the daily registration rates, but can be added during the registration process.*

### Meals Only

Meals will range from \$63–\$125 depending on the meal. For detailed meal pricing, visit the Convention Package page at [www.pibetaphi.org/convention](http://www.pibetaphi.org/convention).

## DON'T FORGET TO SUBMIT YOUR SISTERHOOD STORY

Stories should be short and focus on sisterhood, leadership, events, philanthropy, etc. Stories are shared throughout convention personally, or through The Daily Dart convention newsletter and on social media. Email [sisterhoodstories@pibetaphi.org](mailto:sisterhoodstories@pibetaphi.org) to submit your story.

## Ohio Alpha Celebrates 125 Years of Sisterhood

The Ohio Alpha Chapter at Ohio University celebrated 125 years of sisterhood the weekend of April 25–27, 2014. More than 100 alumnae traveled from near and far to celebrate this momentous occasion.



The festivities began on Friday with a reception at the chapter house attended by University guests as well as other Greek chapter Presidents. University President Dr. Roderick McDavis took time to visit with the collegians and alumnae and offer his congratulations. Afterward, the Pi Phis held a Cookie Shine filled with sweet treats and songs. The Singing Men of Ohio, a collegiate a cappella group, surprised the Pi Phis and delivered a fun-filled serenade.

Saturday's events included tours of the Ohio Alpha Chapter house, guided campus tours and the annual Chapter House Corporation (CHC) meeting. Attendees were asked to bring a new book appropriate for elementary school children to donate as a Read > Lead > Achieve service project.



On Saturday evening, a formal banquet was held on the Ohio University campus. It was a combination of the chapter's annual Founders' Day celebration and the 125th anniversary. Grand Vice President Finance RAE WOHLHUETER MAIER, Kentucky Beta, spoke about lifelong commitment to the Fraternity and had the opportunity to present Ohio Alpha NANCY HALLER JEWSON with her Golden Arrow pin.

The history of Ohio Alpha's founding was presented by Ohio Alpha ELIZABETH PIDCOCK JONES and the chapter's Vice President of Fraternity Development KATIE LUEHRMAN led the group in the Founders' Day Ceremony. Before the end of the banquet, then CHC President MELISSA DATES SCHMIDT, Ohio Alpha, presented a \$12,500 contribution to Pi Beta Phi Foundation. That contribution was later designated to the Carolyn Helman Lichtenberg Graduate Fellowship Fund.



Before leaving on Sunday, alumnae gathered for brunch to share stories from the weekend and connect with friends, old and new. It was exciting to hear many sisters, especially collegians, say throughout the weekend how they were already looking forward to the chapter's 150th anniversary celebration in 2039.

Top: Ohio Alphas LETICIA LEINARD WEIDENHAMER, CAROL OBERT HEMPKER and MEGAN MCQUILLEN GRIPPI.

Middle: Ohio Alpha Chapter members at the formal banquet, held on the Ohio University campus.

Bottom: Ohio Alphas CHRISTY TOY POORMAN, SALLY MAGNUSON RECHNER, ROBIN SHEPARD HAWKINS and ELLEN SUN CORRIE.

## ALABAMA

In May, Alabama Beta sisters gathered for food and friendship in Birmingham, Alabama. The highlight of conversation was discussing how things have changed from collegiate days to the present. From left, Alabama Betas JANE HESTER MCPHERSON, JAN SKINNER NOOJIN, NANCY HARNED COPPAGE, ELIZABETH ROBINSON STOCKARD, ANITA CARNATHAN ALLEN and GRACE DALTON GWIN.



## MISSISSIPPI

This fall, members of the Mississippi Alpha pledge class of 2004 celebrated their 10-year reunion during a weekend in Orange Beach, Alabama. The women love how Pi Phi sisterhood lasts a lifetime. From left, Mississippi Alphas ALLISON PITTS, JULIANNA ALLEN DICKE, TIFFANY PIGOTT PITTS, ANNA DODGE, BRITTANY SPARKS WIYGUL, SAMANTHA ANSTEAD RICHARDS and LINDSAY LORIO.



## OKLAHOMA

In June, Oklahoma Betas from 1978–1983 pledge classes reunited for a weekend to reminisce, visit the Oklahoma State University campus and stay overnight at the chapter house. Activities included a formal dinner, tour of the new University sports facility, a Cookie Shine and a memorial service, including a special memorial poem written by Oklahoma Beta ALLISON HERZFELD LONGWELL. Many of the Pi Phis, 130 in total, had not been back to campus for more than 30 years.



# In Memoriam

Because of space constraints, *The Arrow* will only print the entirety of an obituary for a past Grand President. If you know a sister who has died, please inform Pi Beta Phi Headquarters. Names will only be listed in *The Arrow* if accompanied by a published notice, including those names entered electronically via eReports, Pi Phi's online reporting system. Published notices include a newspaper or newspaper website obituary, a funeral program/prayer card or a listing in a college/university alumni newsletter. Email Alison Bauer at [alison@pibetaphi.org](mailto:alison@pibetaphi.org) or mail to Headquarters.

*Memorial gifts made to Pi Beta Phi Foundation are a loving and lasting way to honor the memory of a beloved Pi Phi sister. When the gift is made, the Foundation sends a card to the family, notifying them of the thoughtful gift. To make a memorial gift, please call the Foundation at (636) 256-1357 or visit [www.pibetaphifoundation.org](http://www.pibetaphifoundation.org).*

## **Alabama Alpha**

Eugenia Wall Dean, 1940

## **Alabama Beta**

Chelsea Frances Coleman, 2006  
Lucy Spain Jackson, 1949

## **Arizona Alpha**

Pat O'Brien Weber, 1959

## **Arizona Beta**

Andrea Contos Nicoluzakis, 1965

## **California Delta**

Mary Ann Morgenstern  
Northcraft Shelton, 1943

## **California Epsilon**

Beverly Dull Whitcomb, 1950

## **Colorado Beta**

Elizabeth Crotchett Moore, 1942

## **Colorado Gamma**

Emily Robinson Kunde, 1955

## **Connecticut Alpha**

Karen Anderson Peterson, 1946

## **D.C. Alpha**

Celeste Dorney Singleton, 1937

## **Florida Beta**

Gloria Johnson Montgomery, 1955

## **Florida Gamma**

Margaret Van Duzer Jelstrom, 1945

## **Idaho Alpha**

Mert Kurdy Michael, 1960

## **Illinois Alpha**

Carol Diane Maxfield, 1979

## **Illinois Beta**

Eleanor Inness Mieth, 1930

## **Illinois Beta-Delta**

Eleanor Moore Merrick, 1948

## **Illinois Epsilon**

Cordelia Snow Lewman, 1944

Lori Hanley Moody, 1954

Georganne Rundall Sears, 1934

Mary Ziesel Williams, 1938

Mary Sutter Zick, 1948

## **Illinois Eta**

Jessica Lynn Bennett, 2009

Roberta Zust Kerwin, 1950

## **Indiana Alpha**

Beverly A. Dildine, 1958

## **Indiana Delta**

Kathryn Lennertz Brier, 1952

Geneive Sexson Plapp, 1934

Barbara Branch Wilton, 1960

## **Indiana Epsilon**

Linda Wilson Albery, 1957

Janyce Givens Guckenberger, 1952

## **Indiana Gamma**

Mary Hurley Manka, 1951

In Memoriam lists the name and initiation year of each member who has died.

## **Indiana Zeta**

Sheliah Heavenridge Dorton, 1964

## **Iowa Gamma**

Doris Plagge Burton, 1939

Judith Clovis Sundeen, 1943

## **Kansas Alpha**

Esther Conger Gabel, 1931

Cynthia Patterson Goodwin, 1953

Joy Brewer Scott, 1953

## **Kentucky Alpha**

Mary Frazier Doheny, 1965

## **Louisiana Beta**

Kip King Anderson, 1954

Andrea Walker Barry, 1990

Gay Gipson Middleton, 1964

## **Maine Alpha**

Pauline Davis Lorfano, 1951

## **Maryland Alpha**

Katharine King Naylor, 1933

## **Maryland Beta**

Terri Schmitt Wilson, 1969

## **Michigan Beta**

Emily "Clare" Malcolm Fingerle, 1955

Joanie Pruitt Ireland, 1950

Joyce Rogers Kerr, 1947

## **Michigan Gamma**

Morgan McGregor, 2012

---

**Minnesota Alpha**

Virginia Huhn Gallup, 1938

**Missouri Alpha**

Marilyn McLeod Dent, 1955

Carolyn Long Franklin, 1950

**Missouri Beta**

Annie Meroe Burnet Ward,  
1932

**Missouri Gamma**

Helen Baldwin Langston, 1936

Jennifer Lynn Mings, 2005

Phyllis Shirk Tisdale, 1940

**Montana Alpha**

Jean Vanwinkle Wolf, 1949

**Nebraska Beta**

Barbara Hyde Kerl, 1961

Sally Wengert, 1957

**New Mexico Alpha**

Briana Hillard, 2011

**New York Delta**

Helen Heald Rader, 1936

**North Carolina Alpha**

Henrietta Logan Kust, 1940

**North Carolina Beta**

Joanne Rae McGhee, 1945

**North Dakota Alpha**

Phyllis Myers Hanson, 1954

Ruth Holkesvig Johnson, 1945

Janet Anderson McCallum,  
1963

**Ohio Beta**

Helen Sommers Martin, 1945

**Ohio Delta**

Barbara Hush Bowin, 1948

Jeanne Baker Harrelson, 1940,  
affiliated Indiana Delta

Barbara Blackford Holmes,  
1946

Mary Fulton Pleiness, 1940

**Ohio Epsilon**

Kelly Ann Kramer, 2007

Patty Hammontree Vyn, 1945

**Ohio Eta**

Constance Retter Schueneman,  
1958, affiliated Ohio Beta

**Oklahoma Alpha**

Eva Jochem McAdams, 1946

**Oklahoma Beta**

Patricia Brown Pratt, 1938

Dorothy Sue Purnell, 1957

**Oregon Gamma**

Beatrice L. Kauffman, 1952

**Pennsylvania Gamma**

Virginia E. Heisey, 1937

**South Carolina Alpha**

Polly McKenzie Norris, 1937

**Tennessee Alpha**

Carol Pruette Spaulding, 1948

**Tennessee Beta**

Dale Daniel Lawson, 1951

**Texas Alpha**

Elizabeth Wheelock Mars, 1986

Betty Kittrell White, 1946

**Texas Beta**

Laura Bass Burris, 1946

Leslie Randall Stebbins, 1948

Jenene McConnell Tynes, 1948

**Texas Gamma**

Mary Swafford Patterson, 1959

**Texas Zeta**

Dorothy Farrow Dickerson,  
1978

**Utah Alpha**

Linda Pelton Bird, 1962

Pamela Anderson McQuarrie,  
1954

**Virginia Alpha**

Mary Arrington Douglas, 1954

**Virginia Gamma**

Roberta Majesky Horan, 1946,  
affiliated Maryland Beta

**Washington Alpha**

Carolyn McKinley Bray, 1947

Esther Hensel Johnson, 1938

**Washington Beta**

Virginia Harger, 1931

Helen Mann Hull, 1954

Jane McMicken Whitney, 1943

**Wisconsin Alpha**

Margaret Trump Phillips, 1948

Carol Schnabel Weber, 1955

**Wyoming Alpha**

Mary Wilson McCollum, 1939



**ARROW POCKET  
T-SHIRT**  
\$28

**CHEVRON GREEK  
LETTER T-SHIRT**  
\$28

**THE PHINEST T-SHIRT**  
\$24

**CLASSIC T-SHIRT**  
\$18

# IT'S OK ... WE'RE WITH CUPID

**ARROW MUG**  
\$15



**NAIL FILE**  
\$3



**NAIL POLISH**  
\$8 each



**ARROW PAJAMA  
PANTS**  
\$35



**RIBBON SHOWER  
WRAP**  
\$45

**Free Tote with  
\$50 Merchandise Purchase!**



Not valid toward previous purchases.  
One tote per customer.  
Offer good until February 14, 2015, or until supplies last.



# love



**TRIPLE BRACELET**  
*Silver-plated*  
*Available with blue or wine stone*  
**\$38**



**MONOGRAM NECKLACE**  
*Silver-plated*  
**\$25**

*Gold-plated*  
**\$25**



**CRYSTAL WRAP BRACELET**  
*Silver-plated*  
*Available in wine or blue*  
**\$28**

**HEART DROP PENDANT**  
**\$32**



**HEART AND ARROW PENDANT**  
**\$25**



**PINK SAPPHIRE BADGE**  
**\$250**



**PEARL BADGE WITH DIAMOND POINT**  
**\$275**



**LEGACY BADGE**  
**\$200**



**BIG SIS/LITTLE SIS CHARM**  
**\$24**

All jewelry is sterling silver or 10k gold unless otherwise noted.  
 Jewelry may be enlarged to show details.



[WWW.PIBETAPHI.ORG/STORE](http://WWW.PIBETAPHI.ORG/STORE)  
 (800) 322-1867

## Pi Phis Gather at Association of Fraternity/Sorority Advisors Annual Meeting; Fraternity Honored with Award

In December, Pi Beta Phi staff, volunteers and campus-based professionals gathered at the Association of Fraternity/Sorority Advisors Annual Meeting. The event provides educational experiences on relevant topics, trends and issues in fraternity/sorority life. Author and keynote speaker SALLY HOGSHEAD, North Carolina Beta, spoke about finding what makes you intensely valuable to others, so the world will see you at your best.

During the conference, Pi Beta Phi received the Excellence in Educational Programming Award in honor of the Online Learning Center. Pi Beta Phi is one of two organizations to win this award twice. Previously, the Fraternity was honored for its member development program, *Leading with Values*<sup>®</sup>. Both award-winning programs are sponsored by Pi Beta Phi Foundation.

Pi Beta Phi revolutionized its officer training in 2013 by becoming one of the first National Panhellenic Conference organizations to train its alumnae and collegiate officers through interactive, online courses. The Online Learning



Pi Phi staff, volunteers and campus-based professionals gathered for breakfast at the Association of Fraternity/Sorority Advisors Annual Meeting.

Center provides self-guided and user-friendly courses, which are personalized for each position to ensure each officer across the country receives structured, consistent training.

## Announcing the 2015 Pi Phi Pages Book Selections

As we wrap up our second year of Pi Phi Pages, it's time to announce which books we'll be reading in 2015. The following titles will be discussed this year in the Fraternity's online book club:

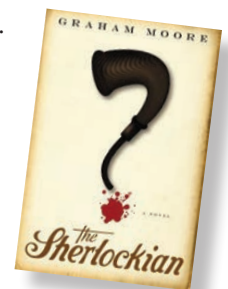
- **January:** "The Sherlockian" by Graham Moore
- **February:** "Scandal in the Secret City" by Diane Fanning
- **March:** "Secret of a Thousand Beauties" by Mingmei Yip
- **April:** "Measure of a Man: From Auschwitz Survivor to President's Tailor" by Martin Greenfield
- **May:** "The Kitchen Boy: A Novel of the Last Tsar" by Robert Alexander
- **June:** "Everything I Never Told You" by Celeste Ng
- **July:** "Neverhome" by Laird Hunt
- **August:** "At the Water's Edge" by Sara Gruen
- **September:** "Some Luck" by Jane Smiley
- **October:** "The Girl on the Train" by Paula Hawkins
- **November:** "Life in Ruins: Archaeologists and the Seductive Lure of Human Rubble" by Marilyn Johnson
- **December:** No book — Happy Holidays!

Online discussions start on the last Monday of each month at [www.piphpages.org](http://www.piphpages.org). All alumnae and collegiate members are welcome to join the conversation and share their thoughts on that month's book. Make sure to click the "Join" button on the discussion page so you'll receive news and reminders throughout the year.

We hope you'll join us for another year of sisters, reading and fun. Save the date, our first meeting is January 26, 2015! We're excited to read "The Sherlockian" by Graham Moore.

We're also excited for convention this June, as we'll be hosting a "live" book club meeting! If you are planning on attending convention, "Everything I Never Told You" by Celeste Ng is a great family drama that would be perfect to read in the plane or car on your way to Chicago. Make sure to RSVP for the Pi Phi Pages book club meeting when you register for the 2015 Convention.

For more information, please visit [www.piphpages.org](http://www.piphpages.org).



## The Arrow Reader's Guide

*The Arrow* of Pi Beta Phi is the official quarterly publication of Pi Beta Phi Fraternity. The purpose of *The Arrow* is to present matters of value to Pi Beta Phi; furnish a means of communication among collegiate chapters, alumnae organizations and officers; and represent the worthiest interest of Fraternity women.

### CONTACT THE ARROW:

*The Arrow* of Pi Beta Phi Fraternity  
1154 Town & Country Commons Drive  
Town & Country, Missouri 63017  
TheArrow@pibetaphi.org  
Phone: (636) 256-0680 Fax: (636) 256-8095

### HOW TO RECEIVE THE ARROW

Collegians receive quarterly issues of *The Arrow* each year with payment of collegiate dues through their chapter. Individual copies are mailed to each undergraduate member's permanent address, and each Pi Beta Phi chapter receives six copies.

The Fall *Arrow* is mailed to all alumnae. Dues-paying alumnae are mailed the winter, spring and summer issues. *The Arrow* is posted online, and non-dues paying alumnae who have a good email address listed with Headquarters (HQ) receive an email notification. Messages are also posted on the Fraternity's official social media accounts when the magazine is available online.

To receive four hard copy issues of *The Arrow*, pay your \$35 annual Fraternity alumna dues to your local alumnae organization or directly to HQ by mailing a check to Pi Beta Phi Fraternity, Alumna Dues, 1154 Town & Country Commons Drive, Town & Country, Missouri 63017. You can also pay your dues online at [www.pibetaphi.org/dues](http://www.pibetaphi.org/dues).

### HOW TO MAKE AN ADDRESS CHANGE OR NAME UPDATE

Visit the profile section of the website or email your name and/or address changes to [headquarters@pibetaphi.org](mailto:headquarters@pibetaphi.org). You may also call Pi Beta Phi HQ at (636) 256-0680 or mail a written notice to Pi Beta Phi HQ.

### LETTERS TO THE EDITOR

Email your letter to the Editor at [editor@pibetaphi.org](mailto:editor@pibetaphi.org). Please include your full name and chapter of initiation. *The Arrow* reserves the right to publish any letter received. Letters may be edited for space and clarity.

### HOW TO GET PUBLISHED

All Pi Phis are encouraged to submit news and stories to *The Arrow*. All photos and written submissions become the property of Pi Beta Phi and are subject to editing for content, grammar and space constraints, and may be used for other educational or marketing purposes by the Fraternity. When submitting a story, be sure to include a member's preferred chapter, first, maiden and last names. As a general rule, *The Arrow* does not print stories about weddings, engagements, pinnings or birth announcements. Visit [www.pibetaphi.org/arrow](http://www.pibetaphi.org/arrow) for more information and to download Pi Beta Phi's Photography Guidelines. We cannot guarantee the publication of any submission. We receive so many and space is limited.

### ARROW SUBMISSION DEADLINES

Spring Issue: February 1      Fall Issue: August 1  
Summer Issue: May 1      Winter Issue: November 1

## Foundation Scholarship Applications Online

Attention collegians and alumnae! Pi Beta Phi Foundation Undergraduate, Graduate Fellowship and Alumnae Continuing Education (ACE) scholarship applications for the 2015–2016 academic year are now available. For more information or to apply, visit [www.pibetaphifoundation.org](http://www.pibetaphifoundation.org). Applications are due February 15, 2015, so don't delay!

## International Badge Day is March 2, 2015

Each year, thousands of women celebrate their sorority membership on National Panhellenic Conference's International Badge Day. On Monday, March 2, 2015, wear your arrow badge or letters to let everyone know you're proud to be a sorority woman and a Pi Beta Phi.



## Pi Beta Phi's Online Learning Center Wins Tech Award

In September, Pi Beta Phi's Online Learning Center won the "Best Blended Program Award" from BizLibrary at the vendor's annual conference. The award honors a program using multimedia resources in a training solution, and that the program has high ratings and positive feedback on the training deployed.



Pi Beta Phi's Online Learning Center was named "Best Blended Program" by BizLibrary. From left, Human Resources Director EMILY BAUMANN KOHLBERG, Missouri Gamma; Operations and Human Resources Specialist HANNAH MUEHLBAUER, Indiana Gamma; Collegiate Services and Programming Coordinator ASHLEY HALLOWELL, Illinois Eta; and Executive Director JULI HOLMES WILLEMEN, Iowa Beta.



Friends & Leaders for Life

Pi Beta Phi Fraternity  
1154 Town & Country Commons Drive  
Town & Country, MO 63017

NONPROFIT  
ORGANIZATION  
US POSTAGE  
PAID  
PERMIT NO 1828  
ST. LOUIS, MO

# Four Cities. 80,000 Books. Lives to be Impacted.

In March, Pi Beta Phi will host four Fraternity Day of Service Signature Events in Atlanta, Des Moines, Oklahoma City and Phoenix. Our goal is to impact thousands of lives and showcase our love of reading while we distribute 80,000 books to children in need. To learn more about this Read > Lead > Achieve initiative, visit [www.pibetaphi.org/fraternitydayofservice](http://www.pibetaphi.org/fraternitydayofservice).

